



**Australian Government**

**Department of Immigration  
and Border Protection**

# **Working Holiday Maker visa programme report**

30 June 2016

This page is left intentionally blank.

# Table of Contents

<b>About this report</b>	<b>1</b>
<b>Enquiries</b>	<b>1</b>
<b>Definition of terms</b>	<b>2</b>
<b>Background to the Working Holiday Maker visa programme</b>	<b>3</b>
<b>Recent developments in the Working Holiday Maker visa programme</b>	<b>6</b>
<b>Executive summary</b>	<b>7</b>
<b>Section 1 Lodged</b>	<b>9</b>
<b>Section 2 Granted</b>	<b>15</b>
<b>Section 3 Grant Rate</b>	<b>27</b>
<b>Section 4 Visa holders in Australia</b>	<b>31</b>

This page is left intentionally blank.

## About this report

This report provides monthly and programme year data on the Working Holiday Maker (WHM) visa programme administered by the Department of Immigration and Border Protection (the department). The report has been provided to assist policymakers and stakeholder organisations.

This report is published every six months, and further developments will occur over time to increase and improve information sharing about the WHM visa programme. Current and previous versions of the report are available on the department's website. These reports, as well as a quarterly Working Holiday Maker visa grants pivot table, are available at <http://www.border.gov.au/about/reports-publications/research-statistics/statistics/visit-australia>.

Data is sourced from several departmental visa processing and recording systems. Data can be dynamic and there can be delays in transmission of information from the department's global operations. Variations in figures between this report and previous reports can occur. Due to these issues, data from the current financial year should always be considered provisional.

Further information about the Working Holiday Maker visa programme is available on the department's website at: <http://www.border.gov.au/Trav/Visa-1/417->  
<http://www.border.gov.au/Trav/Visa-1/462->

### Notes on statistical tables presented by citizenship country

A result of 'na' indicates that the country did not have a Working Holiday Maker arrangement with Australia during the specified period. This may be because the arrangement had not yet commenced or the arrangement is no longer in place. Refer to the table 'Australia's Working Holiday Maker arrangements' in the 'Background to the Working Holiday Maker visa programme' section.

A citizenship country of 'Not Specified' can result from eligible dual nationality applicants where the non-eligible nationality has been recorded for the WHM application.

## Enquiries

Any comment or enquiries concerning this report should be sent to [visa.reporting@border.gov.au](mailto:visa.reporting@border.gov.au) quoting report ID BR0110.

## Definition of terms

<b>Citizenship country:</b>	The country of citizenship of the visa applicant or visa holder. Where a visa applicant or visa holder has more than one citizenship country, either the citizenship of the travel document or the citizenship nominated by the visa applicant is used.
<b>Granted:</b>	Unless otherwise specified, the number of visas granted includes all visa grants.
<b>Snapshot date:</b>	The snapshot date is a point in time at which a count is undertaken. In this report, the number of visa holders in Australia at a point in time is used.
<b>Visa applicant:</b>	Used to refer to clients applying for a visa.
<b>Working Holiday Maker:</b>	Refers collectively to both the Working Holiday (subclass 417) visa and the Work and Holiday (subclass 462) visa.

# Background to the Working Holiday Maker visa programme

The Working Holiday Maker (WHM) visa programme's purpose is to foster closer ties and cultural exchange between Australia and partner countries, with particular emphasis on young adults. It has been in existence since 1975. Today, the WHM visa programme is comprised of the Working Holiday (subclass 417) and the Work and Holiday (subclass 462) visa programmes. Partner countries initially comprised a relatively small number of Commonwealth countries, but the programme has since grown to encompass 39 partner nations and regions (Hong Kong Special Administrative Region of the People's Republic of China) from across the globe.

Australia has an overarching bilateral arrangement, usually in the form of a Memorandum of Understanding, with each partner country. Of the 39 partner countries, 19 are Working Holiday (subclass 417) visa arrangements, and 20 are Work and Holiday (subclass 462) visa arrangements. The key differences between the two visas are that Work and Holiday visa arrangements generally have caps on the number of visas granted annually and additional eligibility requirements. The Work and Holiday visa arrangements that Australia has signed with Greece, Hungary, Papua New Guinea and Vietnam were not in effect as at 30 June 2016. Each of these arrangements will be implemented once both Australia and the partner country have the necessary legislative and administrative systems in place. Announcements will be made on the department's website once implementation processes are complete, enabling participants to lodge visa applications.

WHM arrangements are reciprocal in nature, providing Australians with similar opportunities overseas. In considering whether to add new WHM partner countries, the Australian Government considers a range of factors, including the ability of the prospective partner to offer reciprocity to Australians, and the strength of any cultural and people-to-people links.

## Eligibility requirements

All WHM (both Working Holiday and Work and Holiday) visa applicants must:

- be aged 18-30 at time of application
- hold a passport from an eligible partner country. A list of eligible countries is provided in the 'Australia's Working Holiday Maker Visa Arrangements' section of this report
- not be accompanied by dependent children during their stay in Australia
- meet health and character requirements
- meet financial requirements.

Work and Holiday visa applicants must meet additional requirements, including:

- functional English
- successful completion of at least two years of undergraduate university study (except Israel & USA)
- a letter of home government support in association with their visa application (except China, Israel & USA).

## Working while in Australia

All WHMs may work for the full duration of their 12 month stay in Australia, but cannot generally remain with any one employer for longer than six months (by operation of mandatory visa condition 8547).

WHM visa holders may be eligible for an extension of the six month employment limitation in certain circumstances, including:

- Visa holders who have carried out six months work as an au pair anywhere in Australia may be given approval to work for up to six additional months with the same employer.
- Visa holders who have carried out six months work in eligible industries in northern Australia may be given approval to work for up to six additional months with the same employer. The eligible industries are aged and disability care, agriculture, forestry and fishing, construction, mining, and tourism and hospitality.

## Studying while in Australia

All WHMs are entitled to study for a period of up to four months during their 12 month stay in Australia.

# Background to the Working Holiday Maker visa programme - continued

## Second Working Holiday

Participants are generally limited to holding only one Working Holiday visa or Work and Holiday visa in their lifetime.

However, first-time Working Holiday (subclass 417) visa holders who undertake three months of 'specified work' in regional Australia during their stay acquire eligibility to apply for a second such visa. This provision is not currently available to Work and Holiday (subclass 462) visa participants.

'Specified work' includes work in the agriculture, mining and construction industries. For the purposes of second Working Holiday visa eligibility, regional Australia includes large parts of rural and regional Australia, which are identified in a list of postcodes available on the department's website at:

<http://www.border.gov.au/Trav/Visa-1/417->.

## Processing times

The visa processing service standard for first Working Holiday (subclass 417) visa applications is that 75 per cent are finalised within six calendar days of lodgement. In 2015-16, 74.4 per cent of first Working Holiday visas were finalised within service standards. The service standard for second Working Holiday (subclass 417) visa applications is that 75 per cent are finalised within 21 calendar days of lodgement. In 2015-16, 63.4 per cent of second Working Holiday visas were finalised within service standards.

The visa processing service standard for online Work and Holiday (subclass 462) visa applications (USA nationals only) is that 75 per cent are finalised within six calendar days of lodgement. In 2015-16, 78.1 per cent of online Work and Holiday visa applications were finalised within service standards. The service standard for paper Work and Holiday (subclass 462) visa applications is that 75 per cent are finalised within 14 calendar days of lodgement. In 2015-16, 72.3 per cent of paper Work and Holiday visa applications were finalised within service standards.

Processing times can be affected by factors such as the completeness of applications lodged and additional checks performed by visa processing officers, such as those relating to health and character.

## Countries with which Australia is currently negotiating new Work and Holiday (subclass 462) visa arrangements

- |                  |                    |
|------------------|--------------------|
| 1 Andorra        | 11 Luxembourg      |
| 2 Austria        | 12 Mexico          |
| 3 Brazil         | 13 Monaco          |
| 4 Croatia        | 14 Mongolia        |
| 5 Czech Republic | 15 Peru            |
| 6 Ecuador        | 16 Philippines     |
| 7 Fiji           | 17 San Marino      |
| 8 India          | 18 Singapore       |
| 9 Latvia         | 19 Solomon Islands |
| 10 Lithuania     | 20 Switzerland     |



## Australia's Working Holiday Maker visa arrangements

Commencement Date	Country / Region	Type of Arrangement	Cap
1975	United Kingdom	Working Holiday (SC 417)	N/A
1975	Ireland	Working Holiday (SC 417)	N/A
1975	Canada	Working Holiday (SC 417)	N/A
1 December 1980	Japan	Working Holiday (SC 417)	N/A
1 July 1995	South Korea	Working Holiday (SC 417)	N/A
1 July 1996	Malta	Working Holiday (SC 417)	N/A
1 July 2000	Germany	Working Holiday (SC 417)	N/A
1 July 2001	Sweden	Working Holiday (SC 417)	N/A
1 July 2001	Norway	Working Holiday (SC 417)	N/A
1 July 2001	Denmark	Working Holiday (SC 417)	N/A
15 September 2001	Hong Kong (HKSAR of the PRC)	Working Holiday (SC 417)	N/A
1 May 2002	Finland	Working Holiday (SC 417)	N/A
1 July 2002	Cyprus	Working Holiday (SC 417)	N/A
2 January 2004	Italy	Working Holiday (SC 417)	N/A
20 February 2004	France	Working Holiday (SC 417)	N/A
1 November 2004	Taiwan	Working Holiday (SC 417)	N/A
1 November 2004	Belgium	Working Holiday (SC 417)	N/A
20 May 2005	Estonia	Working Holiday (SC 417)	N/A
1 August 2005	Thailand	Work and Holiday (SC 462)	500
1 March 2006	Chile	Work and Holiday (SC 462)	1500
1 July 2006	Netherlands	Working Holiday (SC 417)	N/A
31 March 2007	Turkey	Work and Holiday (SC 462)	100
31 October 2007	United States of America	Work and Holiday (SC 462)	N/A
1 February 2009	Malaysia	Work and Holiday (SC 462)	100
1 July 2009	Indonesia	Work and Holiday (SC 462)	1000
31 December 2010	Bangladesh	Work and Holiday (SC 462)	100
29 February 2012	Argentina	Work and Holiday (SC 462)	700
1 April 2013	Uruguay	Work and Holiday (SC 462)	200
1 August 2014	Poland	Work and Holiday (SC 462)	200
23 November 2014	Portugal	Work and Holiday (SC 462)	200
23 November 2014	Spain	Work and Holiday (SC 462)	500
21 September 2015	China (excl. SARs)	Work and Holiday (SC 462)	5000
1 January 2016	Slovak Republic	Work and Holiday (SC 462)	200
1 January 2016	Slovenia	Work and Holiday (SC 462)	200
1 June 2016	Israel	Work and Holiday (SC 462)	500
Signed 12 October 2011	Papua New Guinea*	Work and Holiday (SC 462)	100
Signed 14 May 2014	Greece*	Work and Holiday (SC 462)	500
Signed 18 March 2015	Vietnam*	Work and Holiday (SC 462)	200
Signed 24 February 2016	Hungary*	Work and Holiday (SC 462)	200

\* Not yet in effect as at 30 June 2016

## Recent developments in the Working Holiday Maker visa programme

### Commencement of Work and Holiday visa arrangements with the Slovak Republic, Slovenia and Israel

Work and Holiday (subclass 462) visa arrangements between Australia and the Slovak Republic (200 cap) and Slovenia (200 cap) commenced on 1 January 2016, as well as between Australia and Israel (500 cap) on 1 June 2016, enabling the commencement of visa grants under these arrangements.

### Work and Holiday arrangement signed with Hungary

A new Work and Holiday (subclass 462) visa arrangement with Hungary was signed on 24 February 2016. The arrangement will enable up to 200 young, educated people from Australia and Hungary to undertake a working holiday in each other's country.

As at 30 June 2016, a commencement date has not been determined for the Work and Holiday visa arrangement with Hungary. The arrangement will commence at a time to be agreed with the partner country government.

Further Work and Holiday programme developments, including commencement dates for new Work and Holiday visa arrangements, will be announced on the department's website at: <http://www.border.gov.au/Trav/Visa-1/462->.

### Announcement of review of Working Holiday Maker visa programme

On 17 May 2016 the Government announced that it will undertake a review of the broad range of issues affecting the supply and taxation of working holiday makers. The Agriculture and Water Resources portfolio will lead the review in consultation with other agencies, including Employment, Immigration, Regional Development, Tourism, Treasury, and Prime Minister and Cabinet.

# Executive Summary

## Key Points

- In 2015-16, a total of 214,583 Working Holiday Maker (WHM) (subclass 417 and subclass 462) visas were granted, a 5.4 per cent reduction compared to 2014-15.
- There was a 8.1 per cent reduction in first Working Holiday (subclass 417) visa grants to 159,409 and a 12.3 per cent reduction in second Working Holiday visa grants to 36,264. Work and Holiday (subclass 462) visa grants increased 57.8 per cent to 18,910.
- There were 137,376 WHM visa holders in Australia at 30 June 2016, a 4.5 per cent reduction compared to 30 June 2015.

## 1 Applications lodged

In 2015-16, there was a 5 per cent reduction in WHM visa application lodgements compared to 2014-15.

There were a total of 161,378 first Working Holiday (subclass 417) visa applications, 38,893 second Working Holiday (subclass 417) visa applications, and 19,604 Work and Holiday (subclass 462) visa applications lodged in 2015-16.

The very high average grant rate of WHM visas between 1 January 2016 and 30 June 2016 (98.7 per cent - see Section 3) means the number of visas granted tends to be very close to the number of visa applications lodged during the period, noting that there can be a delay between lodgement and grant.

## 2 Visas granted

### First Working Holiday (subclass 417) visa programme

In 2015-16, 159,409 first Working Holiday visas were granted. This is a 8.1 per cent reduction compared to 2014-15.

Reductions in Working Holiday visa grant numbers may be influenced by a range of factors including changing economic conditions and seasonal variability in visa application numbers in partner countries.

The top five countries for first Working Holiday visa grants were:

- United Kingdom (down 6 per cent to 34,097)
- Germany (down 1.4 per cent to 24,210)
- France (down 8.5 per cent to 18,530)
- South Korea (down 14.2 per cent to 17,721)
- Taiwan (down 16.2 per cent to 14,803).

### Second Working Holiday (subclass 417) visa programme

In 2015-16, 36,264 second Working Holiday visas were granted. This is a 12.3 per cent reduction compared to 2014-15. This is largely the result of a flow-on effect from a reduction in first Working Holiday visa grants in 2014-15.

There is a direct but delayed flow-on relationship between the rate of first Working Holiday visa grants and the rate of second Working Holiday visa grants, which usually takes 12 to 18 months to be reflected in the data. Thus, where there has been an increase or decrease in first Working Holiday visa grants, a similar but delayed trend could be expected to flow through to second Working Holiday visa grants.

The top five countries for second Working Holiday visa grants were:

- United Kingdom (down 4.7 per cent to 8,078)
- Taiwan (down 18.1 per cent to 7,354)
- South Korea (down 12.7 per cent to 4,304)
- France (down 4.2 per cent to 2,997)
- Italy (down 15.7 per cent to 2,854).

In 2015-16, around 93 per cent of the second Working Holiday visa applicants indicated they engaged in agricultural work to acquire eligibility, around six per cent undertook construction work, and less than one per cent undertook mining work (see Table 2.15). The employment of the remaining participants (less than one per cent) has not been disaggregated.

### Combined Working Holiday (subclass 417) visa programme

A total of 195,673 combined Working Holiday (first and second) visas were granted in 2015-16.

# Executive Summary – continued

## Combined Working Holiday (subclass 417) visa programme - continued

This is an 8.9 per cent reduction compared to 2014-15 and is a result of the fall in both first Working Holiday visa and second Working Holiday visa applications granted.

The top five countries for combined first and second Working Holiday visa grants were:

- United Kingdom (down 5.7 per cent to 42,175)
- Germany (down 1.3 per cent to 25,980)
- Taiwan (down 16.9 per cent to 22,157)
- South Korea (down 13.9 per cent to 22,025)
- France (down 7.9 per cent to 21,527).

## Work and Holiday (subclass 462) visa programme

A total of 18,910 Work and Holiday visas were granted in 2015-16. This is a 57.8 per cent increase compared to 2014-15.

The top five countries for visa grants under the Work and Holiday visa programme were:

- United States of America (up 3.9 per cent to 8,669)
- China (5,000 visa grants since commencement on 21 September 2015)
- Chile (up 8.1 per cent to 1,500)
- Indonesia (up 169.4 per cent to 776)
- Argentina (up 40 per cent to 700).

The popularity of the newly commenced Work and Holiday visa arrangement with China was a substantial contributor to the growth in Work and Holiday visa grants. However, there was also strong growth in visas granted to nationals of Argentina, Chile, Indonesia, Poland, Portugal, Spain and Uruguay. The majority of partner countries met their annual caps by the end of the 2015-16 programme year.

## 3 Grant rates

The grant rate between 1 January 2016 and 30 June 2016 for first Working Holiday visas for 2015-16 was 99.3 per cent, the grant rate for second Working Holiday visas was 96.3 per cent and the grant rate for Work and Holiday visas was 98.4 per cent.

## 4 Working Holiday Makers in Australia

### Working Holiday (subclass 417) visa holders

As at 30 June 2016, there were 126,756 Working Holiday visa holders in Australia (first and second visas). This is a 7.4 per cent reduction in the number of Working Holiday visa holders in Australia compared to 30 June 2015.

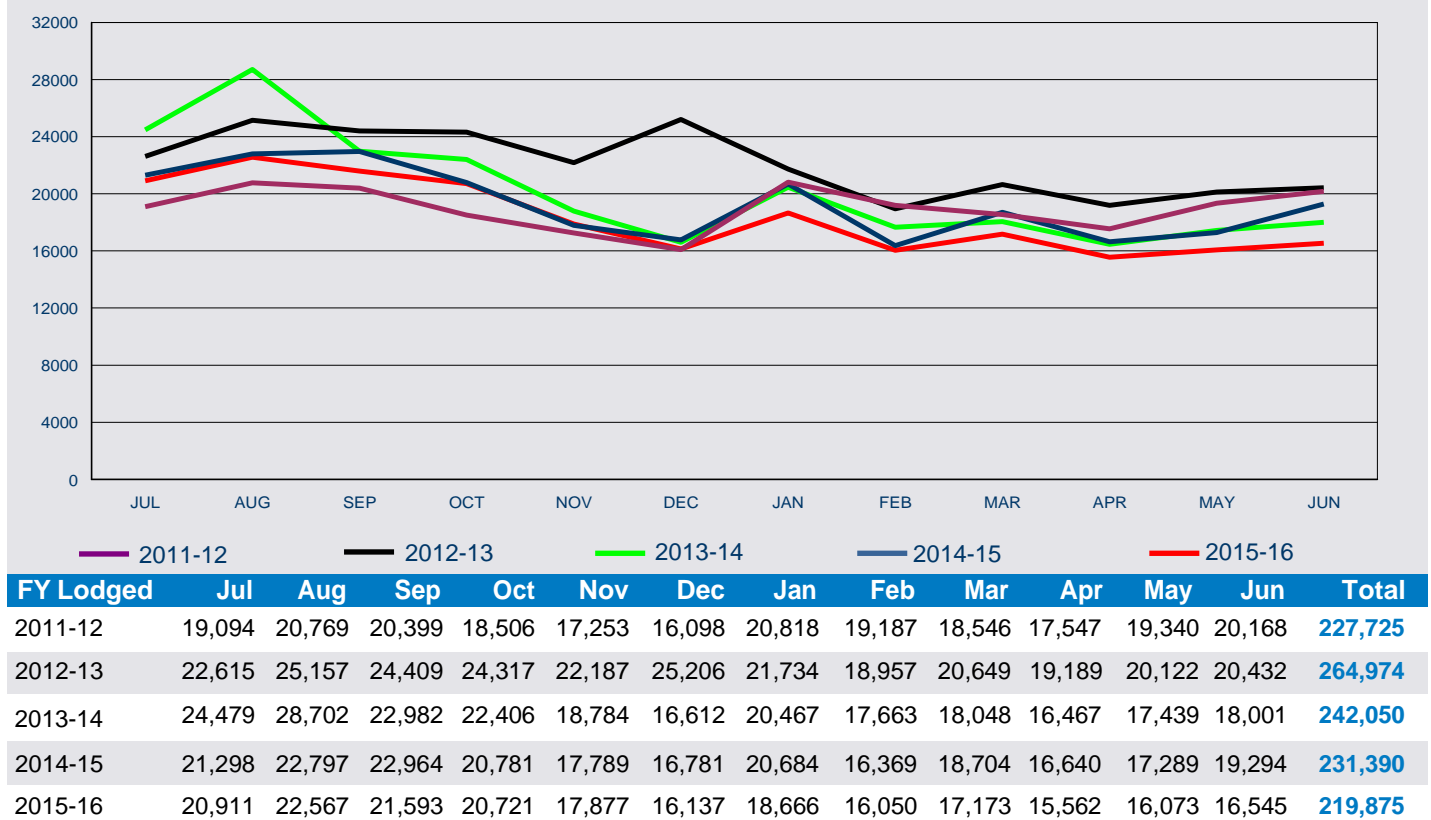
### Work and Holiday (subclass 462) visa holders

As at 30 June 2016, there were 10,620 Work and Holiday visa holders in Australia. This is a 51.2 per cent increase in the number of Work and Holiday visa holders in Australia compared to 30 June 2015.

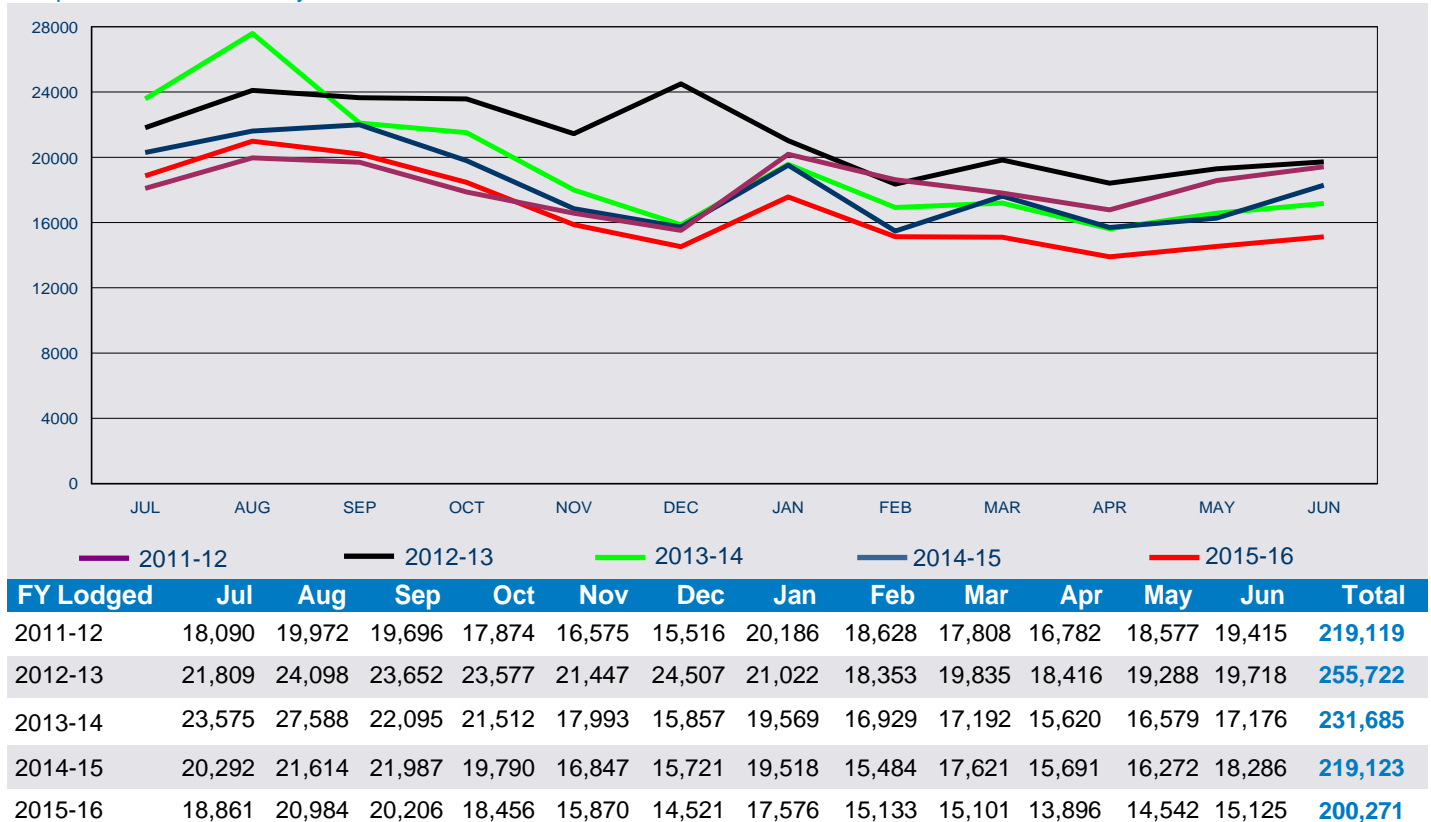
# 1 Lodged

# 1 Lodged

1.01 Total number of Working Holiday Maker visa applications lodged in 2015-16 to 30 June 2016 by month - comparison with previous four financial years

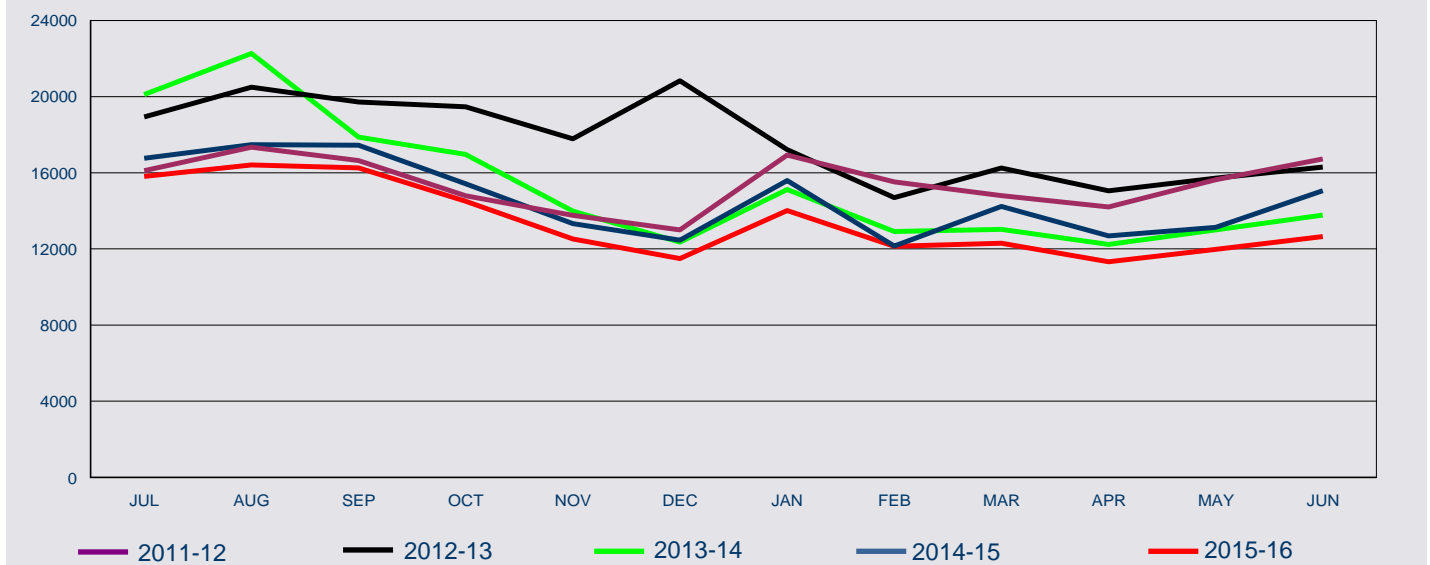


1.02 Total number of Working Holiday (subclass 417) visa applications lodged in 2015-16 to 30 June 2016 by month - comparison with previous four financial years



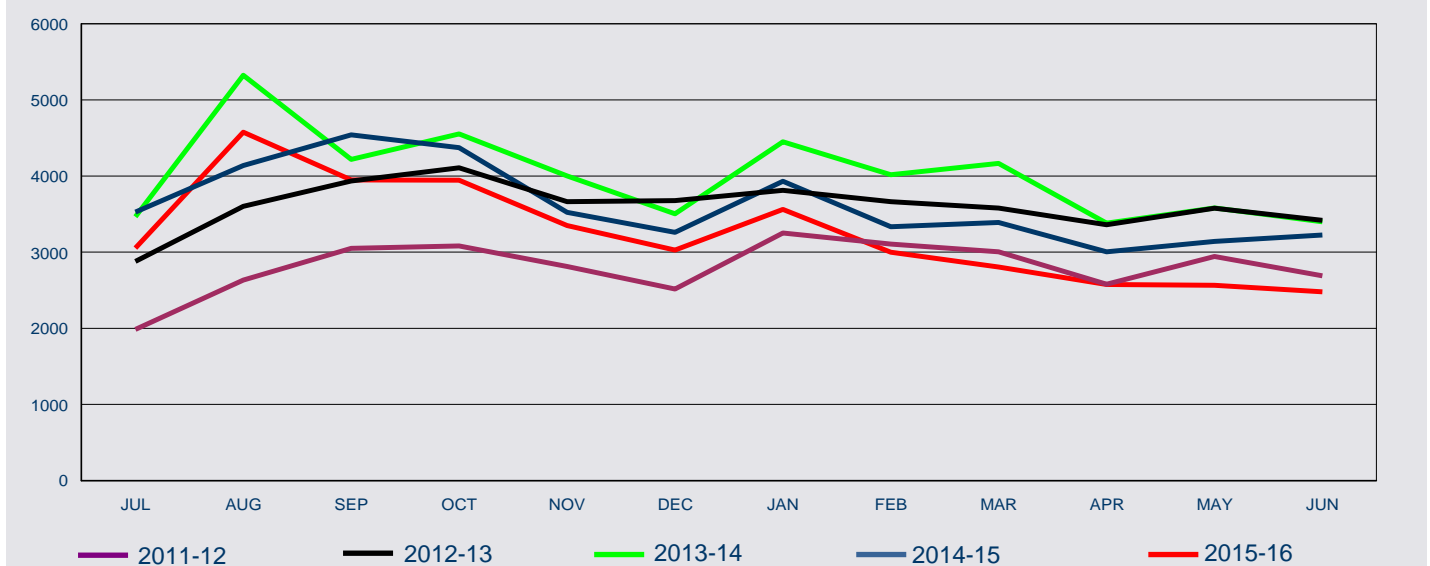
# 1 Lodged

1.03 Number of first Working Holiday (subclass 417) visa applications lodged in 2015-16 to 30 June 2016 by month - comparison with previous four financial years



FY Lodged	Jul	Aug	Sep	Oct	Nov	Dec	Jan	Feb	Mar	Apr	May	Jun	Total
2011-12	16,105	17,338	16,644	14,791	13,762	12,998	16,934	15,523	14,804	14,203	15,633	16,726	185,461
2012-13	18,929	20,497	19,717	19,469	17,784	20,830	17,211	14,690	16,255	15,055	15,711	16,300	212,448
2013-14	20,110	22,264	17,877	16,960	13,990	12,354	15,119	12,913	13,026	12,238	12,998	13,777	183,626
2014-15	16,766	17,475	17,446	15,418	13,325	12,461	15,588	12,151	14,231	12,686	13,131	15,062	175,740
2015-16	15,808	16,408	16,256	14,510	12,519	11,493	14,013	12,135	12,294	11,321	11,976	12,645	161,378

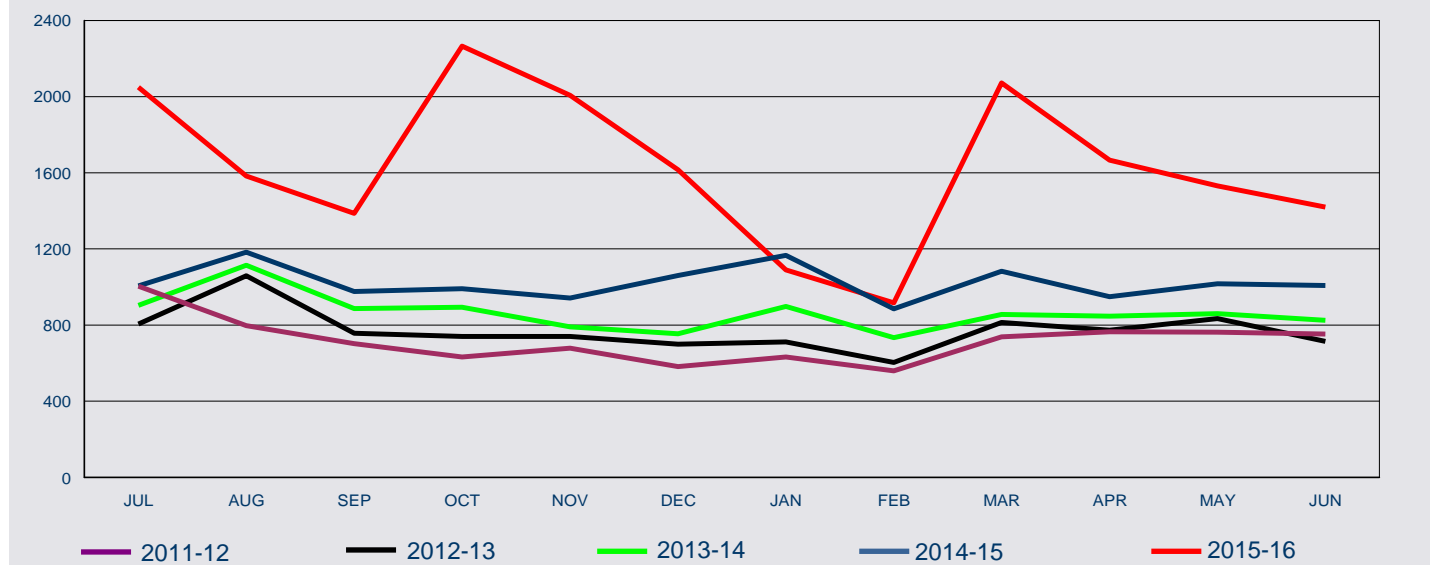
1.04 Number of second Working Holiday (subclass 417) visa applications lodged in 2015-16 to 30 June 2016 by month - comparison with previous four financial years



FY Lodged	Jul	Aug	Sep	Oct	Nov	Dec	Jan	Feb	Mar	Apr	May	Jun	Total
2011-12	1,985	2,634	3,052	3,083	2,813	2,518	3,252	3,105	3,004	2,579	2,944	2,689	33,658
2012-13	2,880	3,601	3,935	4,108	3,663	3,677	3,811	3,663	3,580	3,361	3,577	3,418	43,274
2013-14	3,465	5,324	4,218	4,552	4,003	3,503	4,450	4,016	4,166	3,382	3,581	3,399	48,059
2014-15	3,526	4,139	4,541	4,372	3,522	3,260	3,930	3,333	3,390	3,005	3,141	3,224	43,383
2015-16	3,053	4,576	3,950	3,946	3,351	3,028	3,563	2,998	2,807	2,575	2,566	2,480	38,893

# 1 Lodged

1.05 Total number of Work and Holiday (subclass 462) visa applications lodged in 2015-16 to 30 June 2016 by month - comparison with previous four financial years



FY Lodged	Jul	Aug	Sep	Oct	Nov	Dec	Jan	Feb	Mar	Apr	May	Jun	Total
2011-12	1,004	797	703	632	678	582	632	559	738	765	763	753	8,606
2012-13	806	1,059	757	740	740	699	712	604	814	773	834	714	9,252
2013-14	904	1,114	887	894	791	755	898	734	856	847	860	825	10,365
2014-15	1,006	1,183	977	991	942	1,060	1,166	885	1,083	949	1,017	1,008	12,267
2015-16	2,050	1,583	1,387	2,265	2,007	1,616	1,090	917	2,072	1,666	1,531	1,420	19,604

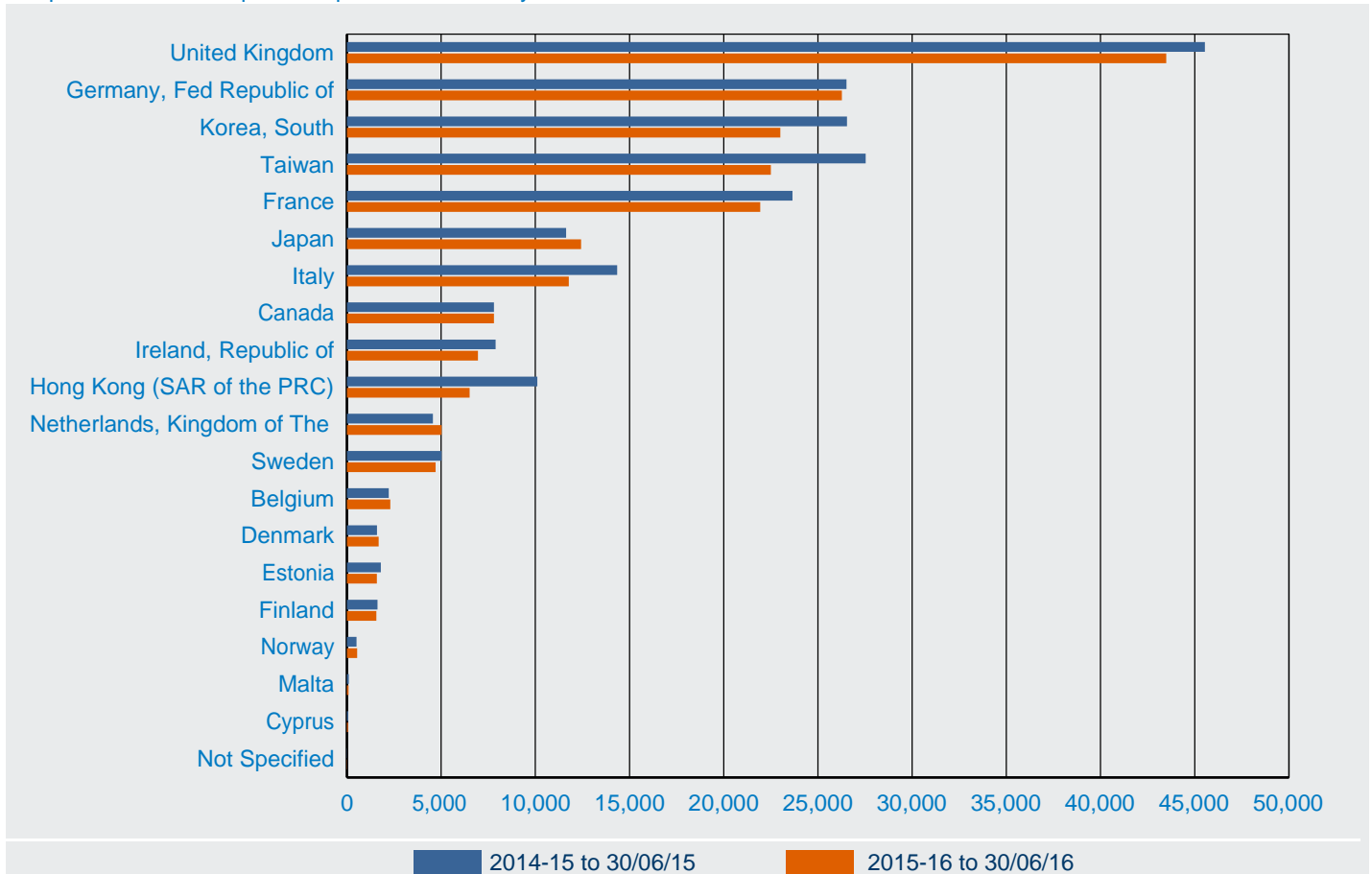
1.06 Total number of Working Holiday Maker visa applications lodged in the 6 month period between 1 January 2016 and 30 June 2016 by visa subclass and visa type - comparison with previous four periods

Visa Subclass	01/01/14 to 30/06/14	01/07/14 to 31/12/14	01/01/15 to 30/06/15	01/07/15 to 31/12/15	01/01/16 to 30/06/16
<b>417 Working Holiday</b>					
First visa	80,071	92,891	82,849	86,994	74,384
Second visa	22,994	23,360	20,023	21,904	16,989
<b>All 417 Working Holiday</b>	<b>103,065</b>	<b>116,251</b>	<b>102,872</b>	<b>108,898</b>	<b>91,373</b>
462 Work and Holiday	5,020	6,159	6,108	10,908	8,696
<b>All Working Holiday Maker</b>	<b>108,085</b>	<b>122,410</b>	<b>108,980</b>	<b>119,806</b>	<b>100,069</b>



# 1 Lodged

1.07 Number of Working Holiday (subclass 417) visa applications lodged in 2015-16 to 30 June 2016 by citizenship country - comparison with same period in previous financial year

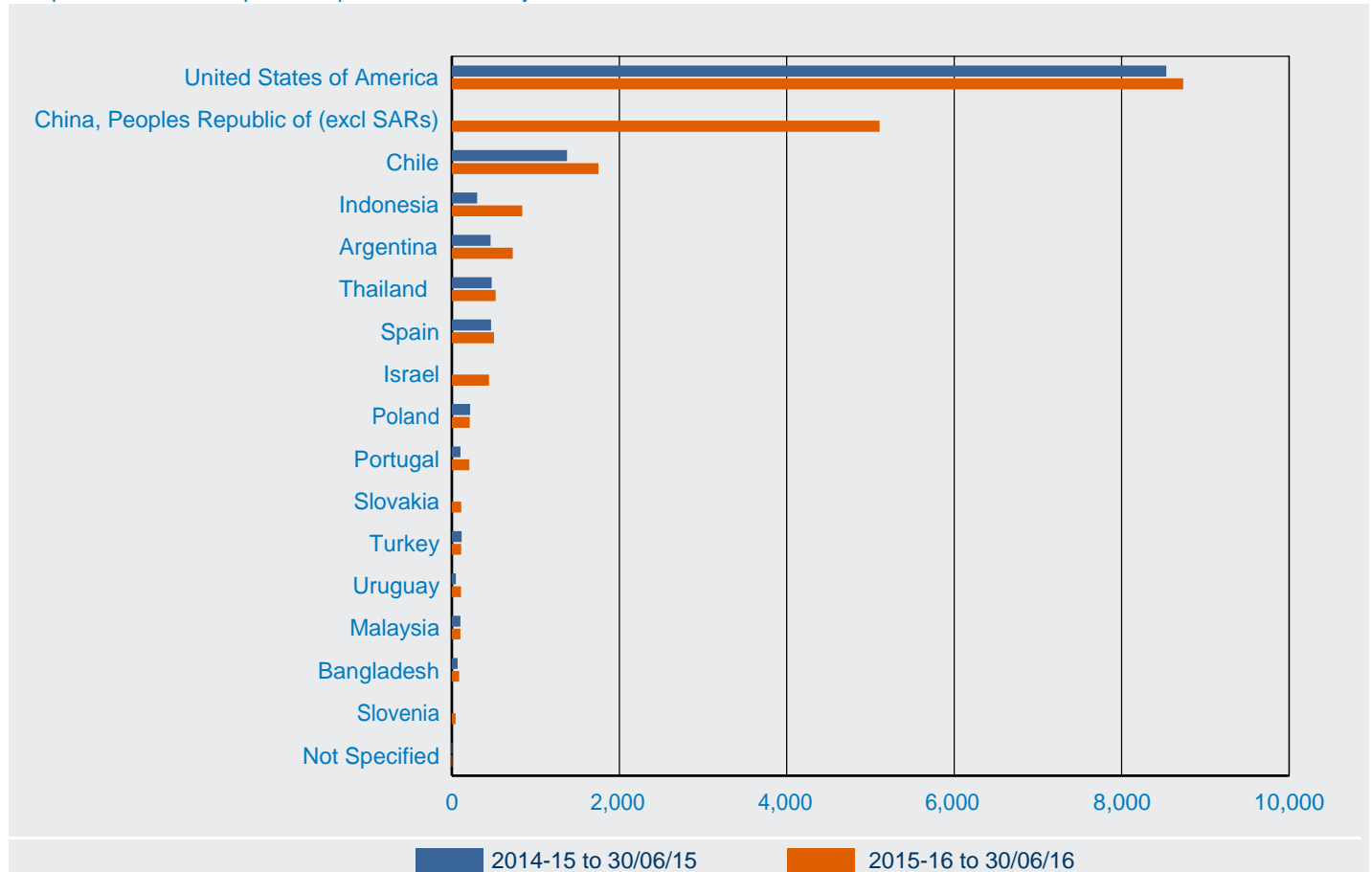


Citizenship Country	2014 15 to 30/06/15	2015 16 to 30/06/16	% Change from 2014 15	2015 16 as % of Total
United Kingdom	45,544	43,485	-4.5%	21.7%
Germany, Fed Republic of	26,516	26,273	-0.9%	13.1%
Korea, South	26,540	23,005	-13.3%	11.5%
Taiwan	27,535	22,497	-18.3%	11.2%
France	23,652	21,937	-7.3%	11.0%
Japan	11,633	12,434	6.9%	6.2%
Italy	14,346	11,781	-17.9%	5.9%
Canada	7,808	7,805	0.0%	3.9%
Ireland, Republic of	7,894	6,955	-11.9%	3.5%
Hong Kong (SAR of the PRC)	10,110	6,514	-35.6%	3.3%
Netherlands, Kingdom of The	4,564	5,033	10.3%	2.5%
Sweden	5,031	4,704	-6.5%	2.3%
Belgium	2,223	2,304	3.6%	1.2%
Denmark	1,597	1,688	5.7%	0.8%
Estonia	1,797	1,588	-11.6%	0.8%
Finland	1,626	1,563	-3.9%	0.8%
Norway	513	544	6.0%	0.3%
Malta	103	86	-16.5%	0.0%
Cyprus	76	60	-21.1%	0.0%
Not Specified	15	15	0.0%	0.0%
<b>Total</b>	<b>219,123</b>	<b>200,271</b>	<b>-8.6%</b>	<b>100.0%</b>

Note: Further information on statistical tables presented by citizenship country can be found on page 1 under 'About this report'

# 1 Lodged

1.08 Number of Work and Holiday (subclass 462) visa applications lodged in 2015-16 to 30 June 2016 by citizenship country - comparison with same period in previous financial year



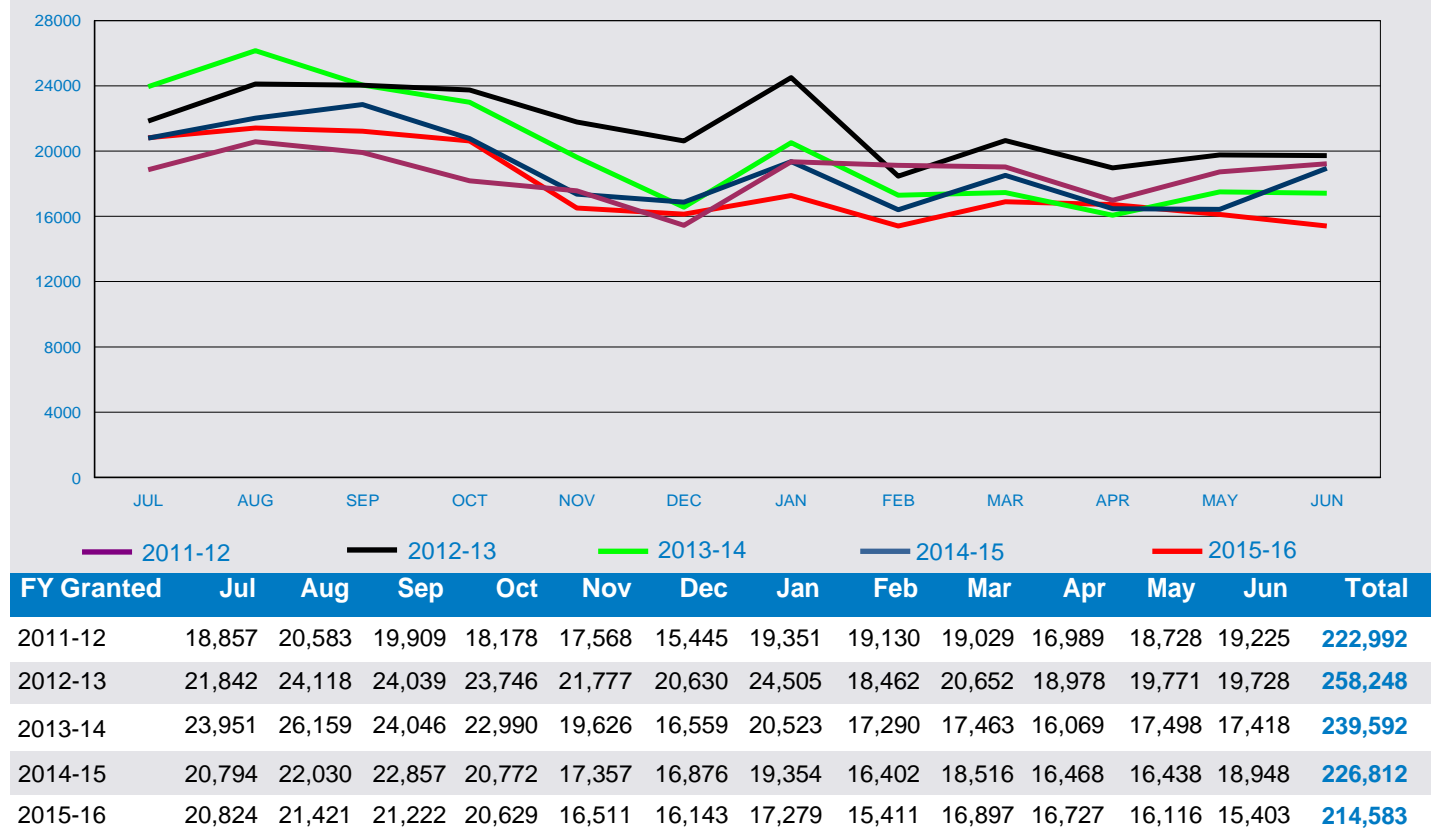
Citizenship Country	2014 15 to 30/06/15	2015 16 to 30/06/16	% Change from 2014 15	2015 16 as % of Total
United States of America	8,534	8,734	2.3%	44.6%
China, Peoples Republic of (excl SARs)	na	5,109		26.1%
Chile	1,375	1,751	27.3%	8.9%
Indonesia	303	840	177.2%	4.3%
Argentina	463	726	56.8%	3.7%
Thailand	475	522	9.9%	2.7%
Spain	467	502	7.5%	2.6%
Israel	na	445		2.3%
Poland	219	212	-3.2%	1.1%
Portugal	102	209	104.9%	1.1%
Slovakia	na	111		0.6%
Turkey	115	108	-6.1%	0.6%
Uruguay	46	107	132.6%	0.5%
Malaysia	100	100	0.0%	0.5%
Bangladesh	67	85	26.9%	0.4%
Slovenia	na	42		0.2%
Not Specified	< 5	< 5	0.0%	0.0%
<b>Total</b>	<b>12,267</b>	<b>19,604</b>	<b>59.8%</b>	<b>100.0%</b>

Note: Further information on statistical tables presented by citizenship country can be found on page 1 under 'About this report'

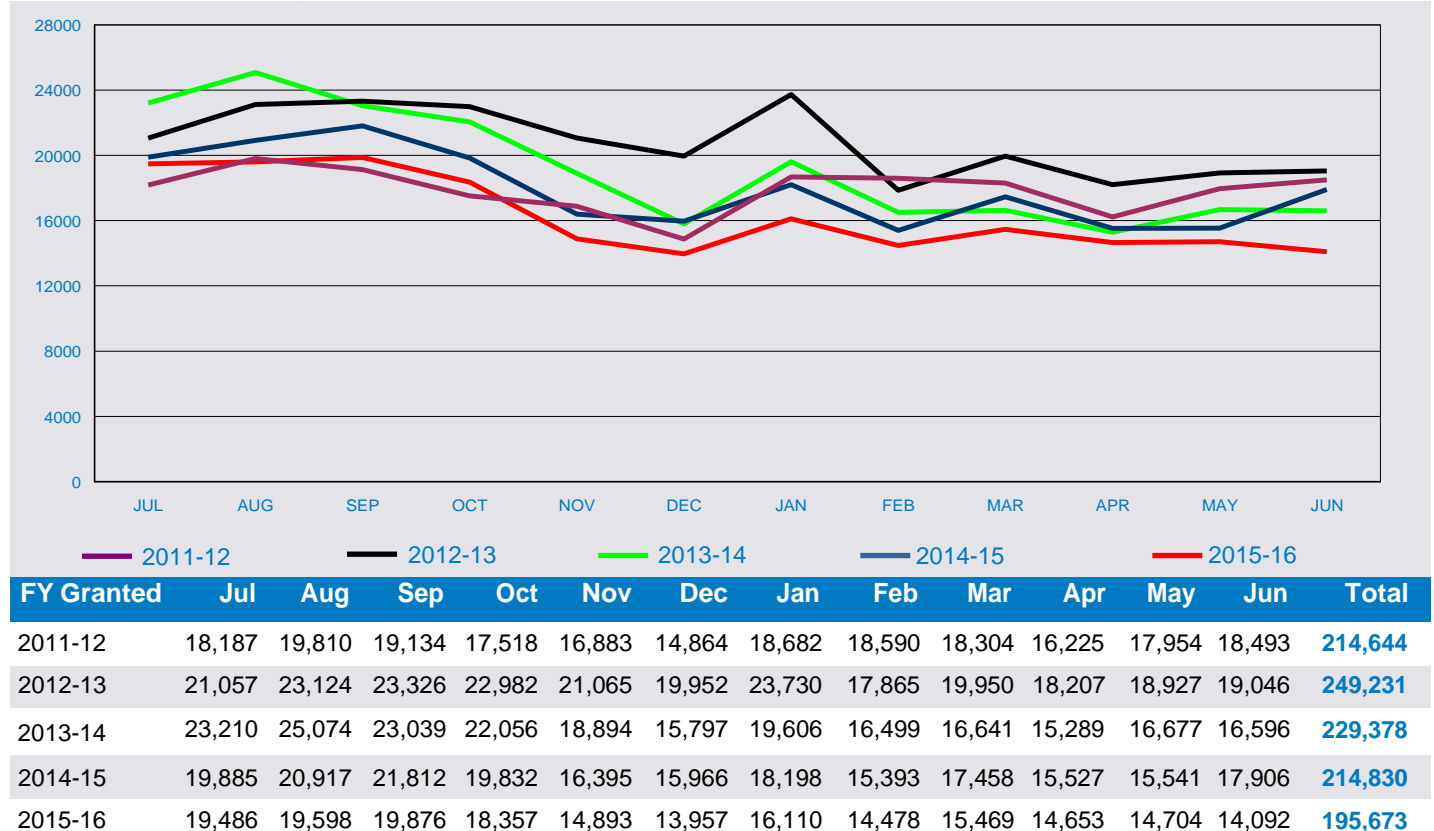
# 2 Granted

## 2 Granted

2.01 Total number of Working Holiday Maker visa applications granted in 2015-16 to 30 June 2016 by month - comparison with previous four financial years

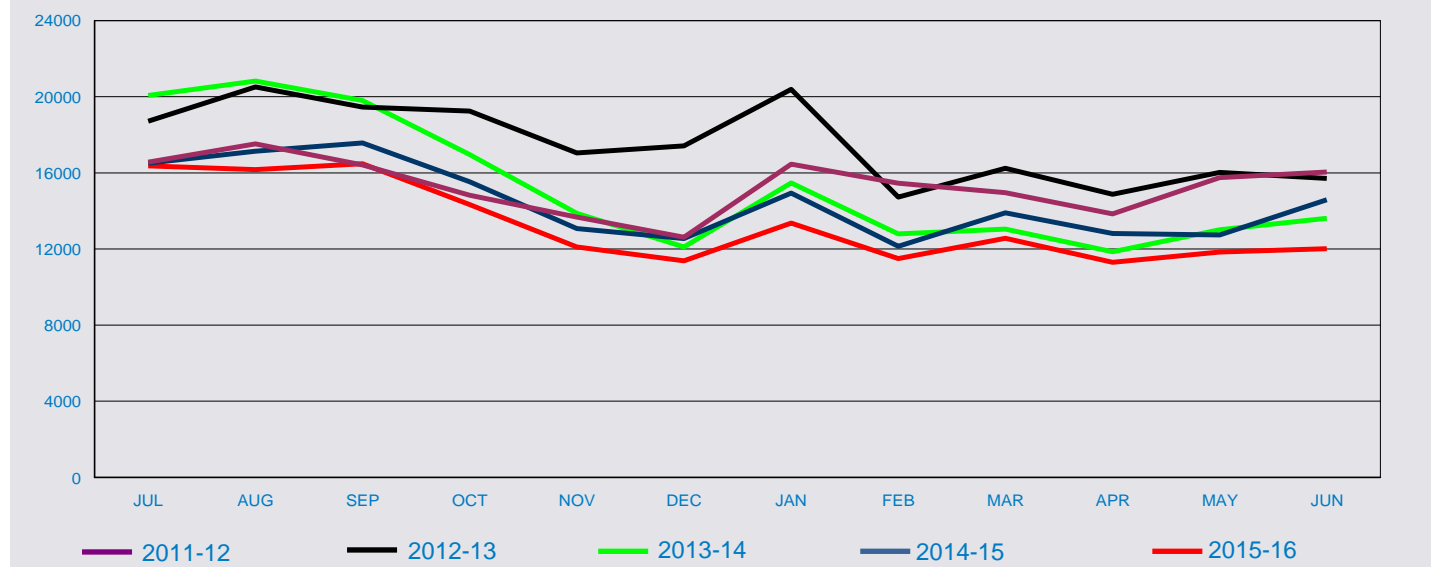


2.02 Total number of Working Holiday (subclass 417) visa applications granted in 2015-16 to 30 June 2016 by month - comparison with previous four financial years



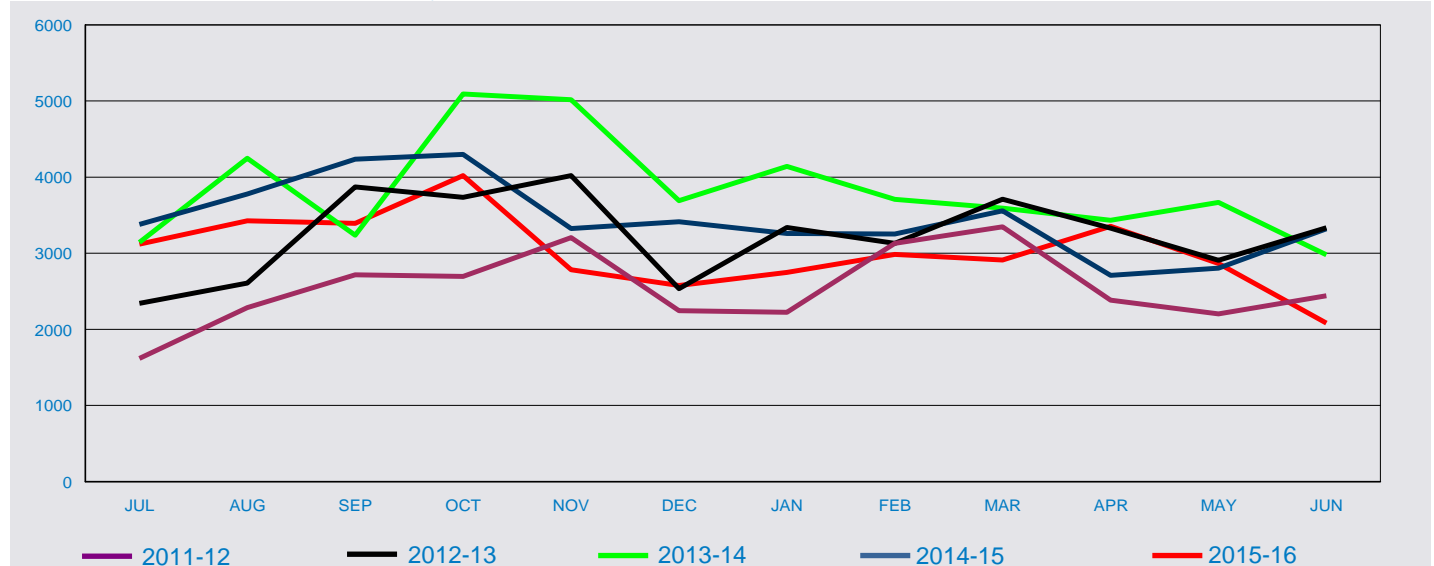
## 2 Granted

2.03 Number of first Working Holiday (subclass 417) visa applications granted in 2015-16 to 30 June 2016 by month - comparison with previous four financial years



FY Granted	Jul	Aug	Sep	Oct	Nov	Dec	Jan	Feb	Mar	Apr	May	Jun	Total
2011-12	16,567	17,524	16,417	14,821	13,678	12,619	16,457	15,461	14,957	13,842	15,750	16,050	184,143
2012-13	18,715	20,515	19,455	19,247	17,046	17,417	20,391	14,735	16,240	14,877	16,019	15,712	210,369
2013-14	20,068	20,825	19,803	16,963	13,876	12,105	15,464	12,792	13,049	11,856	13,009	13,618	183,428
2014-15	16,505	17,138	17,576	15,533	13,070	12,552	14,938	12,140	13,900	12,816	12,737	14,586	173,491
2015-16	16,367	16,170	16,482	14,338	12,109	11,381	13,362	11,493	12,557	11,300	11,839	12,011	159,409

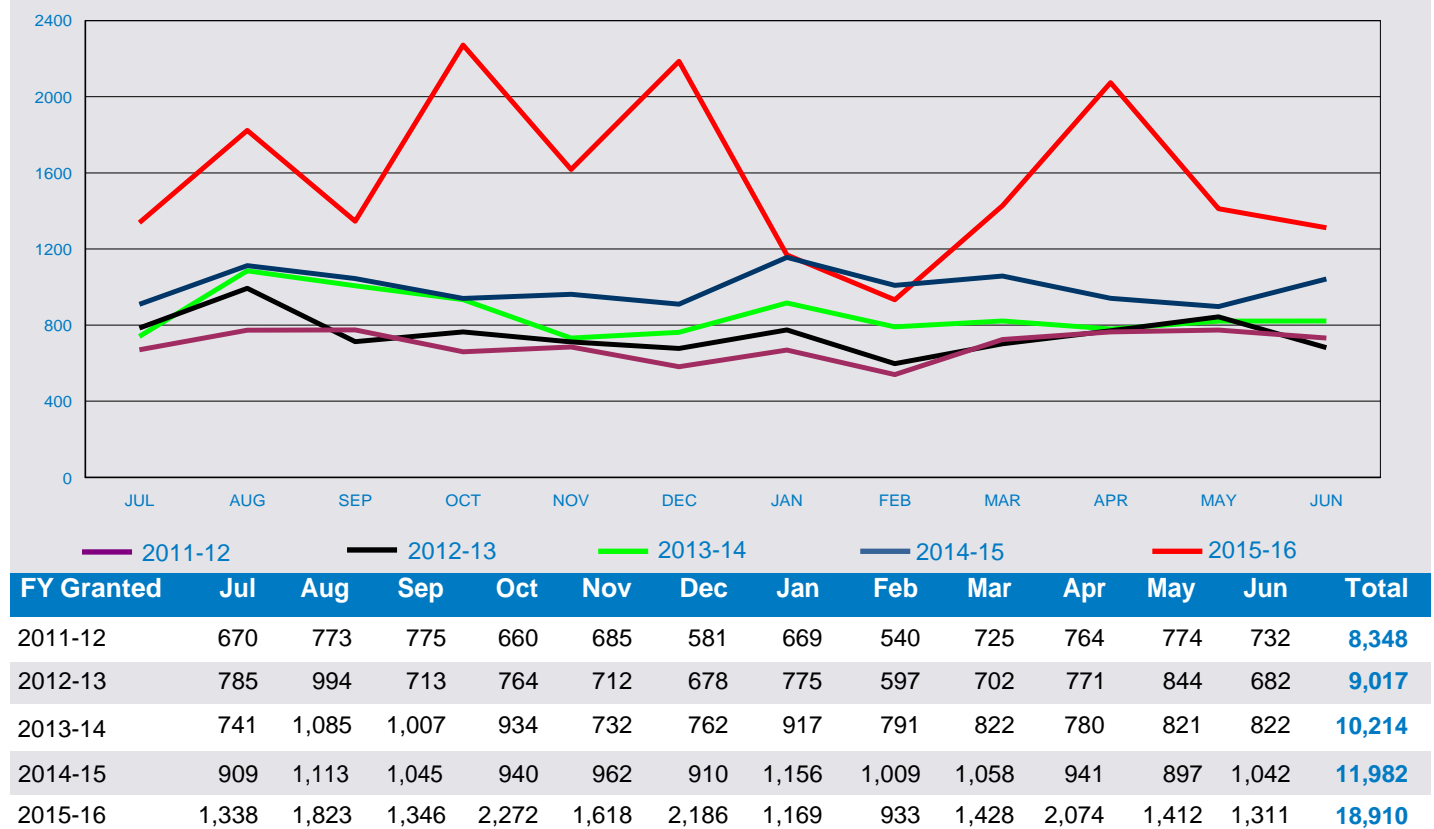
2.04 Number of second Working Holiday (subclass 417) visa applications granted in 2015-16 to 30 June 2016 by month - comparison with previous four financial years



FY Granted	Jul	Aug	Sep	Oct	Nov	Dec	Jan	Feb	Mar	Apr	May	Jun	Total
2011-12	1,620	2,286	2,717	2,697	3,205	2,245	2,225	3,129	3,347	2,383	2,204	2,443	30,501
2012-13	2,342	2,609	3,871	3,735	4,019	2,535	3,339	3,130	3,710	3,330	2,908	3,334	38,862
2013-14	3,142	4,249	3,236	5,093	5,018	3,692	4,142	3,707	3,592	3,433	3,668	2,978	45,950
2014-15	3,380	3,779	4,236	4,299	3,325	3,414	3,260	3,253	3,558	2,711	2,804	3,320	41,339
2015-16	3,119	3,428	3,394	4,019	2,784	2,576	2,748	2,985	2,912	3,353	2,865	2,081	36,264

## 2 Granted

2.05 Total number of Work and Holiday (subclass 462) visa applications granted in 2015-16 to 30 June 2016 by month - comparison with previous four financial years



2.06 Total number of Working Holiday Maker visa applications granted in the 6 month period between 1 January 2016 and 30 June 2016 by visa subclass and visa type - comparison with previous four periods

Visa Subclass	01/01/14 to 30/06/14	01/07/14 to 31/12/14	01/01/15 to 30/06/15	01/07/15 to 31/12/15	01/01/16 to 30/06/16
<b>417 Working Holiday</b>					
First visa	79,788	92,374	81,117	86,847	72,562
Second visa	21,520	22,433	18,906	19,320	16,944
<b>All 417 Working Holiday</b>	<b>101,308</b>	<b>114,807</b>	<b>100,023</b>	<b>106,167</b>	<b>89,506</b>
462 Work and Holiday	4,953	5,879	6,103	10,583	8,327
<b>All Working Holiday Maker</b>	<b>106,261</b>	<b>120,686</b>	<b>106,126</b>	<b>116,750</b>	<b>97,833</b>

## 2 Granted

2.07 Total number of Working Holiday (subclass 417) visa applications granted in 2015-16 to 30 June 2016 by citizenship country - comparison with the previous four financial years

Citizenship Country	2011 12 to 30/06/12	2012 13 to 30/06/13	2013 14 to 30/06/14	2014 15 to 30/06/15	2015 16 to 30/06/16	% Change from 2014 15	2015 16 as a % of Total
United Kingdom	41,712	46,131	45,208	44,730	42,175	-5.7%	21.6%
Germany, Fed Republic of	22,499	26,184	26,819	26,327	25,980	-1.3%	13.3%
Taiwan	22,393	35,761	29,366	26,648	22,157	-16.9%	11.3%
Korea, South	32,591	35,220	26,893	25,589	22,025	-13.9%	11.3%
France	20,086	24,788	25,734	23,375	21,527	-7.9%	11.0%
Japan	9,162	9,957	10,579	11,481	12,304	7.2%	6.3%
Italy	9,600	15,973	16,045	14,138	11,591	-18.0%	5.9%
Canada	7,929	7,489	7,174	7,705	7,632	-0.9%	3.9%
Ireland, Republic of	25,827	19,117	11,996	7,793	6,743	-13.5%	3.4%
Hong Kong (SAR of the PRC)	7,512	11,454	11,667	9,720	6,309	-35.1%	3.2%
Netherlands, Kingdom of The	3,879	4,306	4,293	4,518	4,907	8.6%	2.5%
Sweden	4,772	5,364	5,464	4,995	4,628	-7.3%	2.4%
Belgium	1,456	1,785	2,012	2,188	2,260	3.3%	1.2%
Denmark	1,484	1,516	1,672	1,576	1,664	5.6%	0.9%
Estonia	1,813	2,185	2,206	1,736	1,569	-9.6%	0.8%
Finland	1,181	1,278	1,510	1,624	1,535	-5.5%	0.8%
Norway	617	504	530	503	525	4.4%	0.3%
Malta	99	89	98	103	85	-17.5%	0.0%
Cyprus	32	128	110	78	54	-30.8%	0.0%
Not Specified		< 5	< 5	< 5	< 5	0.0%	0.0%
<b>Total</b>	<b>214,644</b>	<b>249,231</b>	<b>229,378</b>	<b>214,830</b>	<b>195,673</b>	<b>-8.9%</b>	<b>100.0%</b>

Note: Further information on statistical tables presented by citizenship country can be found on page 1 under 'About this report'

2.08 Number of first Working Holiday (subclass 417) visa applications granted in 2015-16 to 30 June 2016 by citizenship country - comparison with the previous four financial years

Citizenship Country	2011 12 to 30/06/12	2012 13 to 30/06/13	2013 14 to 30/06/14	2014 15 to 30/06/15	2015 16 to 30/06/16	% Change from 2014 15	2015 16 as a % of Total
United Kingdom	35,700	38,782	36,778	36,257	34,097	-6.0%	21.4%
Germany, Fed Republic of	21,091	24,687	25,207	24,561	24,210	-1.4%	15.2%
France	18,388	22,539	22,958	20,246	18,530	-8.5%	11.6%
Korea, South	27,397	29,614	21,110	20,661	17,721	-14.2%	11.1%
Taiwan	18,148	28,599	18,071	17,673	14,803	-16.2%	9.3%
Japan	7,638	8,248	8,539	9,333	10,082	8.0%	6.3%
Italy	8,659	14,198	12,895	10,751	8,737	-18.7%	5.5%
Canada	7,296	6,900	6,525	6,943	6,826	-1.7%	4.3%
Ireland, Republic of	19,492	11,817	6,763	5,221	5,099	-2.3%	3.2%
Netherlands, Kingdom of The	3,597	4,005	3,912	4,038	4,400	9.0%	2.8%
Hong Kong (SAR of the PRC)	6,362	9,544	8,713	6,842	4,293	-37.3%	2.7%
Sweden	4,524	4,993	5,058	4,454	4,174	-6.3%	2.6%
Belgium	1,331	1,630	1,850	1,954	1,982	1.4%	1.2%
Denmark	1,407	1,425	1,585	1,461	1,544	5.7%	1.0%
Finland	1,106	1,146	1,356	1,444	1,313	-9.1%	0.8%
Estonia	1,306	1,559	1,421	1,043	991	-5.0%	0.6%
Norway	585	480	504	465	501	7.7%	0.3%
Malta	86	76	84	88	59	-33.0%	0.0%
Cyprus	30	126	97	53	44	-17.0%	0.0%
Not Specified		< 5	< 5	< 5	< 5	0.0%	0.0%
<b>Total</b>	<b>184,143</b>	<b>210,369</b>	<b>183,428</b>	<b>173,491</b>	<b>159,409</b>	<b>-8.1%</b>	<b>100.0%</b>

Note: Further information on statistical tables presented by citizenship country can be found on page 1 under 'About this report'

## 2 Granted

2.09 Number of second Working Holiday (subclass 417) visa applications granted in 2015-16 to 30 June 2016 by citizenship country - comparison with the previous four financial years

Citizenship Country	2011 12 to 30/06/12	2012 13 to 30/06/13	2013 14 to 30/06/14	2014 15 to 30/06/15	2015 16 to 30/06/16	% Change from 2014 15	2015 16 as a % of Total
United Kingdom	6,012	7,349	8,430	8,473	8,078	-4.7%	22.3%
Taiwan	4,245	7,162	11,295	8,975	7,354	-18.1%	20.3%
Korea, South	5,194	5,606	5,783	4,928	4,304	-12.7%	11.9%
France	1,698	2,249	2,776	3,129	2,997	-4.2%	8.3%
Italy	941	1,775	3,150	3,387	2,854	-15.7%	7.9%
Japan	1,524	1,709	2,040	2,148	2,222	3.4%	6.1%
Hong Kong (SAR of the PRC)	1,150	1,910	2,954	2,878	2,016	-30.0%	5.6%
Germany, Fed Republic of	1,408	1,497	1,612	1,766	1,770	0.2%	4.9%
Ireland, Republic of	6,335	7,300	5,233	2,572	1,644	-36.1%	4.5%
Canada	633	589	649	762	806	5.8%	2.2%
Estonia	507	626	785	693	578	-16.6%	1.6%
Netherlands, Kingdom of The	282	301	381	480	507	5.6%	1.4%
Sweden	248	371	406	541	454	-16.1%	1.3%
Belgium	125	155	162	234	278	18.8%	0.8%
Finland	75	132	154	180	222	23.3%	0.6%
Denmark	77	91	87	115	120	4.3%	0.3%
Malta	13	13	14	15	26	73.3%	0.1%
Norway	32	24	26	38	24	-36.8%	0.1%
Cyprus	< 5	< 5	13	25	10	-60.0%	0.0%
Not Specified		< 5					
<b>Total</b>	<b>30,501</b>	<b>38,862</b>	<b>45,950</b>	<b>41,339</b>	<b>36,264</b>	<b>-12.3%</b>	<b>100.0%</b>

Note: Further information on statistical tables presented by citizenship country can be found on page 1 under 'About this report'

2.10 Number of Work and Holiday (subclass 462) visa applications granted in 2015-16 to 30 June 2016 by citizenship country - comparison with the previous four financial years

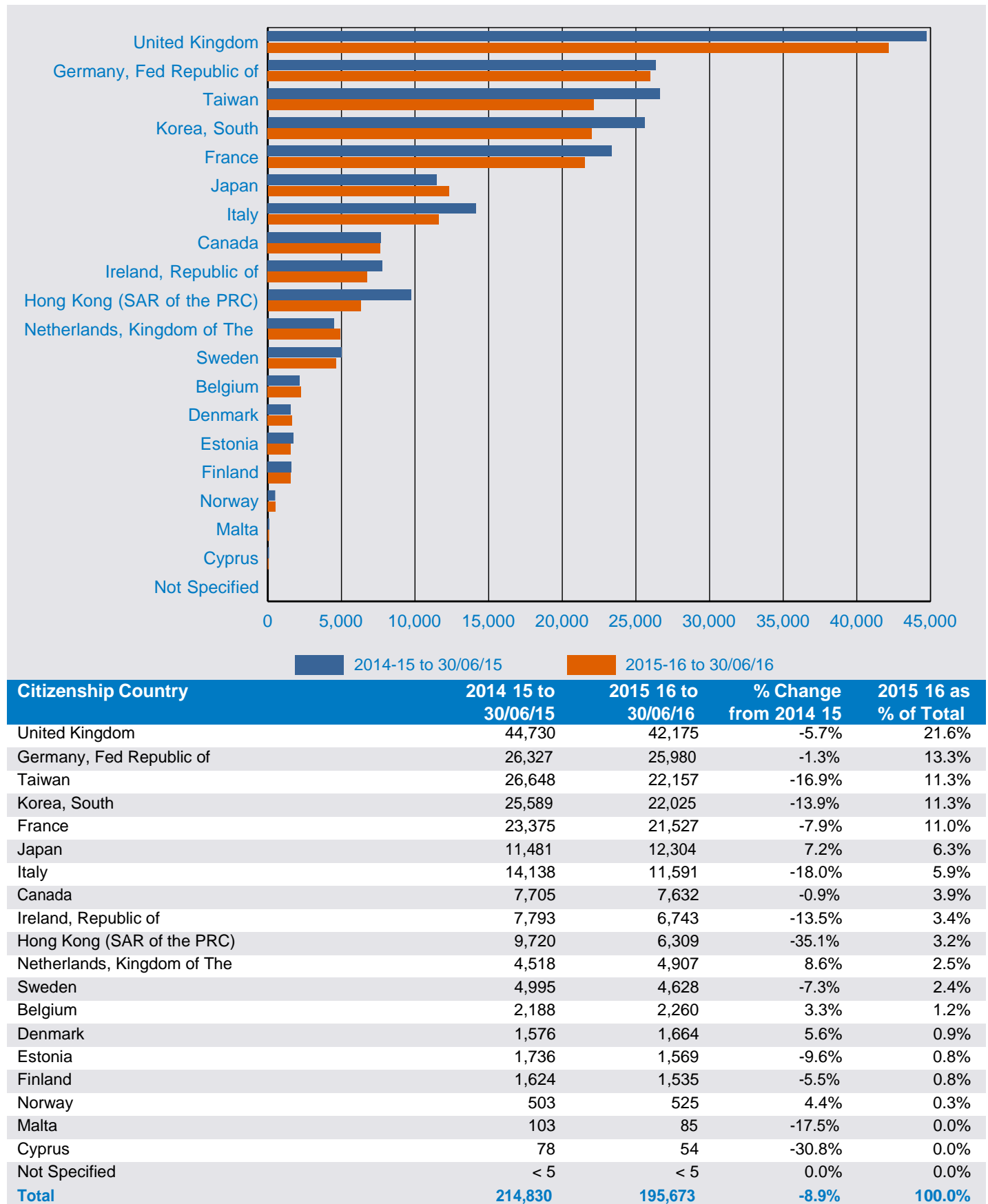
Citizenship Country	2011 12 to 30/06/12	2012 13 to 30/06/13	2013 14 to 30/06/14	2014 15 to 30/06/15	2015 16 to 30/06/16	% Change from 2014 15	2015 16 as a % of Total
United States of America	6,831	6,878	7,499	8,347	8,669	3.9%	45.8%
China, Peoples Republic of (excl SARs)	na	na	na	na	5,000		26.4%
Chile	639	808	1,004	1,388	1,500	8.1%	7.9%
Indonesia	99	176	437	288	776	169.4%	4.1%
Argentina	261	417	500	500	700	40.0%	3.7%
Spain	na	na	na	419	504	20.3%	2.7%
Thailand	346	464	471	466	500	7.3%	2.6%
Israel	na	na	na	na	401		2.1%
Poland				200	200	0.0%	1.1%
Portugal	na	na	na	82	200	143.9%	1.1%
Uruguay	na	9	40	47	104	121.3%	0.5%
Slovakia	na	na	na	na	104		0.5%
Turkey	21	102	100	100	100	0.0%	0.5%
Malaysia	100	100	100	100	100	0.0%	0.5%
Slovenia	na	na	na	na	37		0.2%
Bangladesh	49	62	63	44	15	-65.9%	0.1%
Iran	< 5				na		
Not Specified		< 5		< 5		-100.0%	
<b>Total</b>	<b>8,348</b>	<b>9,017</b>	<b>10,214</b>	<b>11,982</b>	<b>18,910</b>	<b>57.8%</b>	<b>100.0%</b>

Note: Further information on statistical tables presented by citizenship country can be found on page 1 under 'About this report'



## 2 Granted

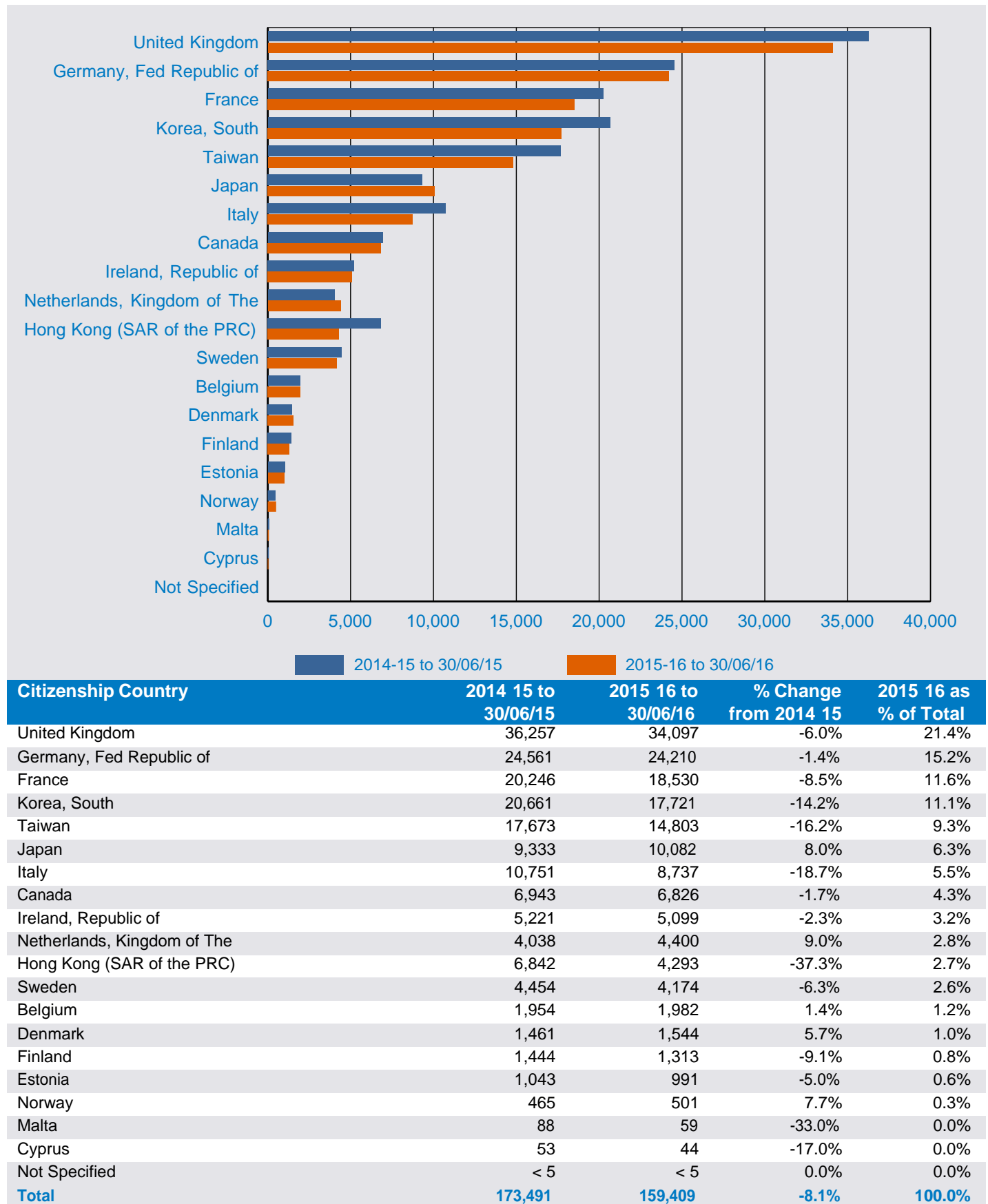
2.11 Total number of Working Holiday (subclass 417) visa applications granted in 2015-16 to 30 June 2016 by citizenship country - comparison with the previous financial year



Note: Further information on statistical tables presented by citizenship country can be found on page 1 under 'About this report'

## 2 Granted

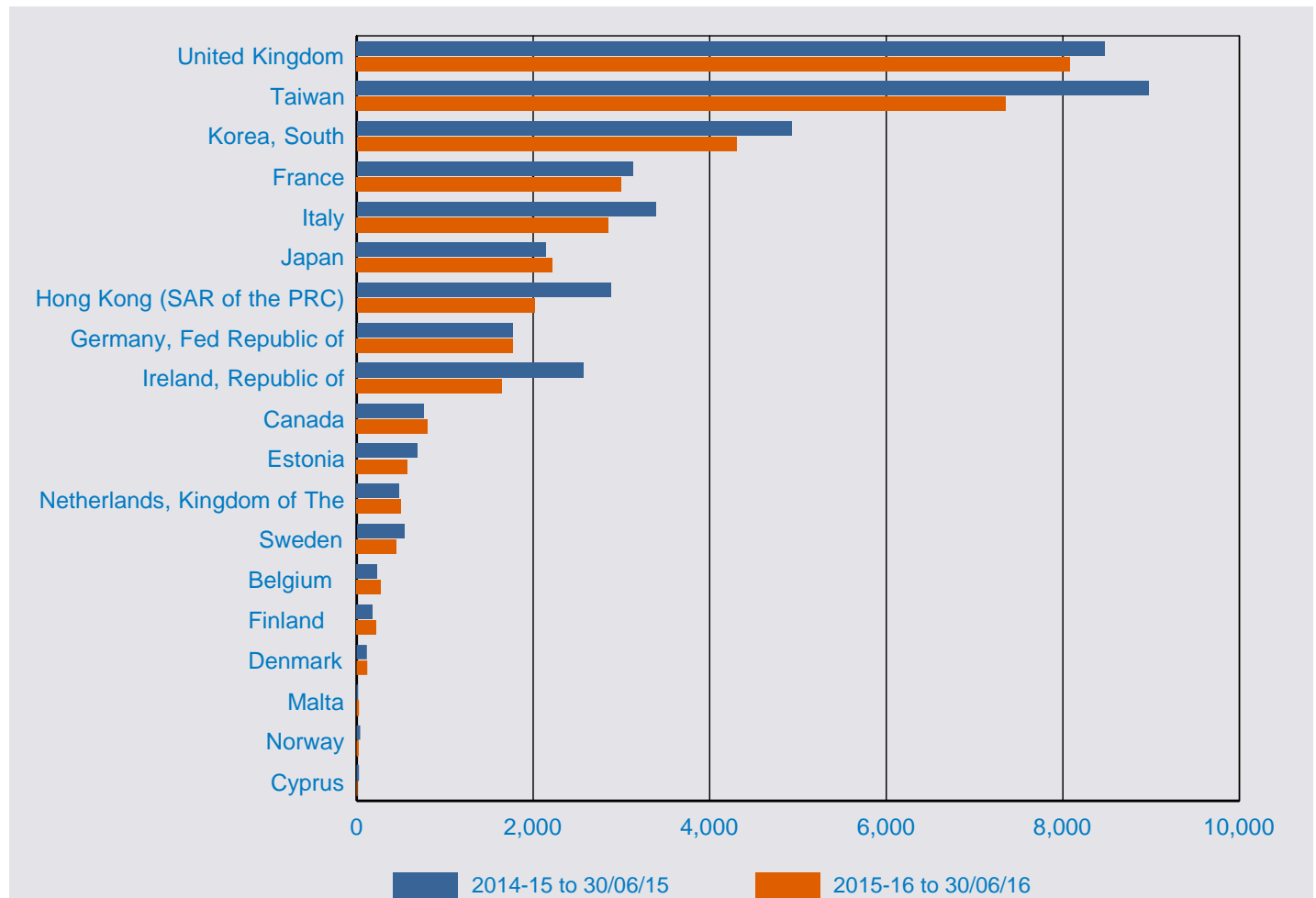
2.12 Number of first Working Holiday (subclass 417) visa applications granted in 2015-16 to 30 June 2016 by citizenship country - comparison with the previous financial year



Note: Further information on statistical tables presented by citizenship country can be found on page 1 under 'About this report'

## 2 Granted

2.13 Number of second Working Holiday (subclass 417) visa applications granted in 2015-16 to 30 June 2016 by citizenship country - comparison with the previous financial year

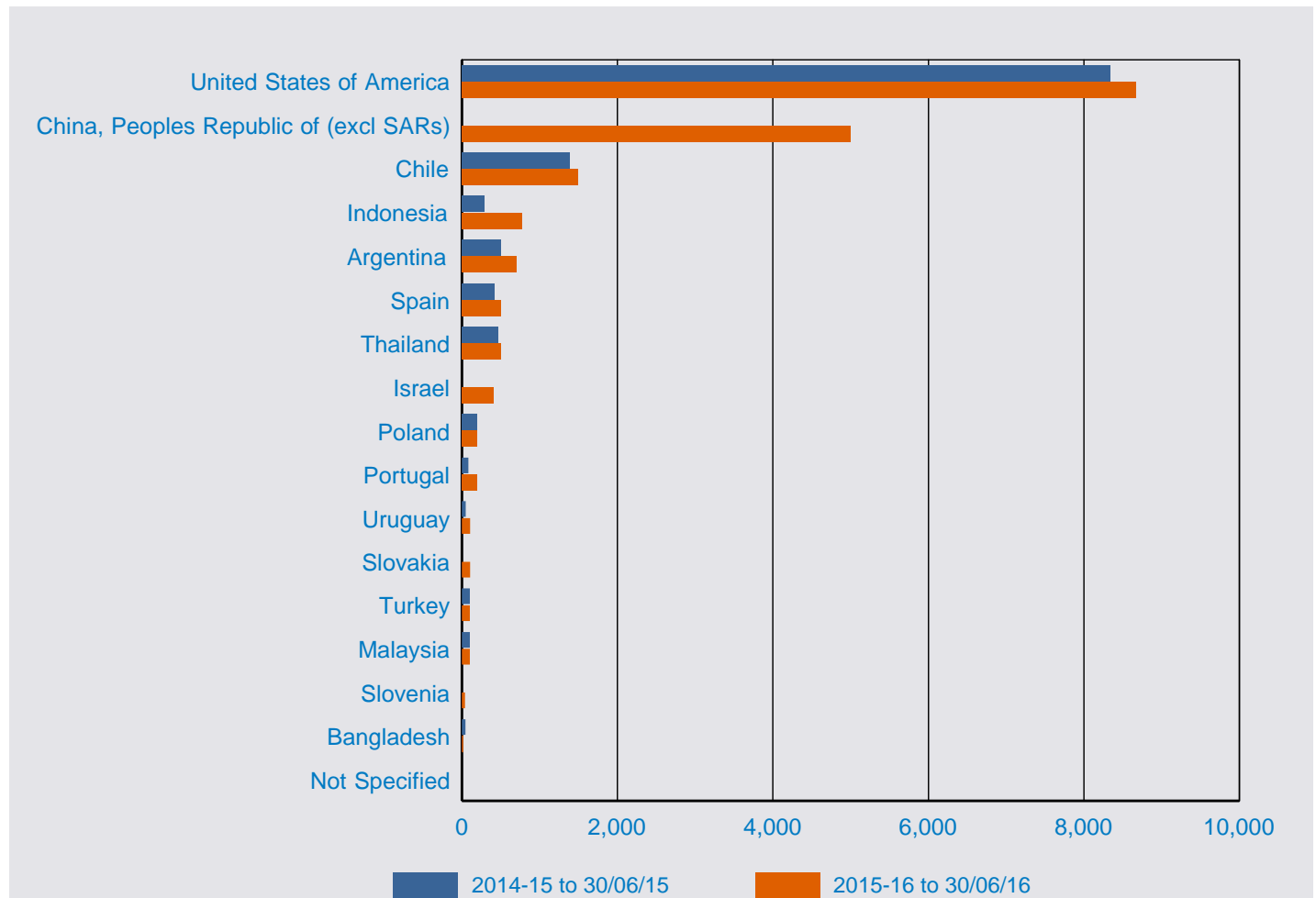


Citizenship Country	2014 15 to 30/06/15	2015 16 to 30/06/16	% Change from 2014 15	2015 16 as % of Total
United Kingdom	8,473	8,078	-4.7%	22.3%
Taiwan	8,975	7,354	-18.1%	20.3%
Korea, South	4,928	4,304	-12.7%	11.9%
France	3,129	2,997	-4.2%	8.3%
Italy	3,387	2,854	-15.7%	7.9%
Japan	2,148	2,222	3.4%	6.1%
Hong Kong (SAR of the PRC)	2,878	2,016	-30.0%	5.6%
Germany, Fed Republic of	1,766	1,770	0.2%	4.9%
Ireland, Republic of	2,572	1,644	-36.1%	4.5%
Canada	762	806	5.8%	2.2%
Estonia	693	578	-16.6%	1.6%
Netherlands, Kingdom of The	480	507	5.6%	1.4%
Sweden	541	454	-16.1%	1.3%
Belgium	234	278	18.8%	0.8%
Finland	180	222	23.3%	0.6%
Denmark	115	120	4.3%	0.3%
Malta	15	26	73.3%	0.1%
Norway	38	24	-36.8%	0.1%
Cyprus	25	10	-60.0%	0.0%
<b>Total</b>	<b>41,339</b>	<b>36,264</b>	<b>-12.3%</b>	<b>100.0%</b>

Note: Further information on statistical tables presented by citizenship country can be found on page 1 under 'About this report'

## 2 Granted

2.14 Number of Work and Holiday (subclass 462) visa applications granted in 2015-16 to 30 June 2016 by citizenship country - comparison with the previous financial year

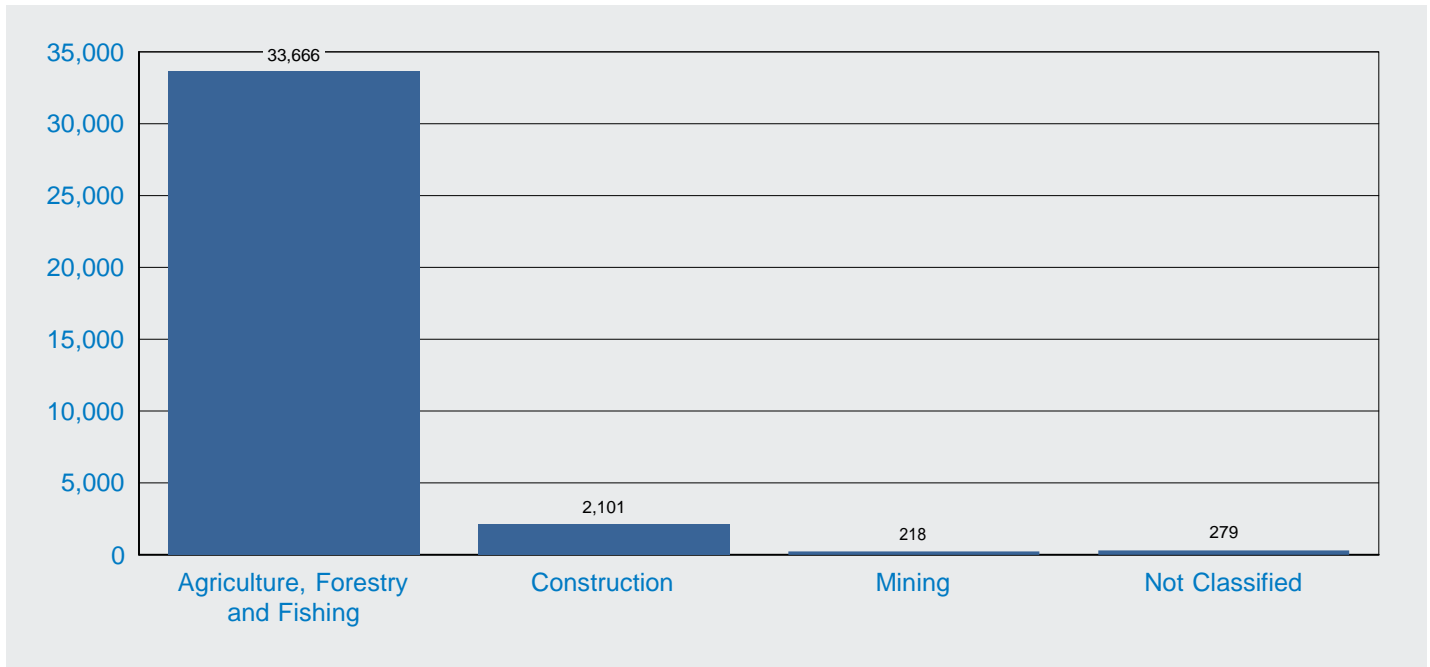


Citizenship Country	2014 15 to 30/06/15	2015 16 to 30/06/16	% Change from 2014 15	2015 16 as % of Total
United States of America	8,347	8,669	3.9%	45.8%
China, Peoples Republic of (excl SARs)	na	5,000		26.4%
Chile	1,388	1,500	8.1%	7.9%
Indonesia	288	776	169.4%	4.1%
Argentina	500	700	40.0%	3.7%
Spain	419	504	20.3%	2.7%
Thailand	466	500	7.3%	2.6%
Israel	na	401		2.1%
Poland	200	200	0.0%	1.1%
Portugal	82	200	143.9%	1.1%
Uruguay	47	104	121.3%	0.5%
Slovakia	na	104		0.5%
Turkey	100	100	0.0%	0.5%
Malaysia	100	100	0.0%	0.5%
Slovenia	na	37		0.2%
Bangladesh	44	15	-65.9%	0.1%
Not Specified	< 5	< 5	-100.0%	
<b>Total</b>	<b>11,982</b>	<b>18,910</b>	<b>57.8%</b>	<b>100.0%</b>

Note: Further information on statistical tables presented by citizenship country can be found on page 1 under 'About this report'

## 2 Granted

2.15 Second Working Holiday (subclass 417) visa applications granted in 2015-16 to 30 June 2016 by employer industry





# 3 Grant Rate

For this section, grant rates have been shown.

A grant rate is defined as:

$$\frac{\text{Number of grants}}{\text{Number of decisions}} \times 100$$

where the number of decisions equals the number of grants plus the number of refusals.

## 3 Grant rate

3.01 Grant rate of Working Holiday Maker visa applications decided in the 6 month period between 1 January 2016 and 30 June 2016 by visa type and visa subclass - comparison with previous four periods

Visa Subclass	01/01/14 to 30/06/14	01/07/14 to 31/12/14	01/01/15 to 30/06/15	01/07/15 to 31/12/15	01/01/16 to 30/06/16
<b>417 Working Holiday</b>					
First visa	99.3%	99.4%	99.1%	99.2%	99.3%
Second visa	94.9%	96.1%	95.7%	97.3%	96.3%
<b>All 417 Working Holiday</b>	<b>98.3%</b>	<b>98.7%</b>	<b>98.5%</b>	<b>98.9%</b>	<b>98.7%</b>
<b>462 Work and Holiday</b>					
Standard	99.4%	98.3%	98.2%	98.6%	98.4%
<b>All Working Holiday Maker</b>	<b>98.4%</b>	<b>98.7%</b>	<b>98.4%</b>	<b>98.8%</b>	<b>98.7%</b>



## 3 Grant rate

3.02 Grant rate for Working Holiday (subclass 417) visa applications decided in the 6 month period between 1 January 2016 and 30 June 2016 by citizenship country - comparison with previous four periods

Citizenship Country	01/01/14 to 30/06/14	01/07/14 to 31/12/14	01/01/15 to 30/06/15	01/07/15 to 31/12/15	01/01/16 to 30/06/16
<b>subclass 417 first visa</b>					
United Kingdom	99.7%	99.6%	99.4%	99.3%	99.2%
Germany, Fed Republic of	99.8%	99.9%	99.8%	99.8%	99.8%
Korea, South	98.3%	99.0%	98.2%	98.1%	98.7%
France	99.8%	99.7%	99.6%	99.6%	99.7%
Taiwan	98.9%	99.1%	99.0%	98.6%	98.6%
Japan	99.5%	99.4%	99.5%	99.7%	99.7%
Italy	99.6%	99.8%	99.4%	99.6%	99.4%
Canada	99.5%	99.5%	99.4%	99.7%	99.5%
Ireland, Republic of	99.7%	99.7%	99.7%	99.6%	99.6%
Hong Kong (SAR of the PRC)	96.7%	95.8%	96.2%	94.3%	97.0%
Netherlands, Kingdom of The	99.7%	99.7%	99.6%	99.7%	99.7%
Sweden	99.7%	99.9%	99.4%	99.7%	99.7%
Belgium	99.7%	99.8%	99.6%	99.5%	99.6%
Denmark	100.0%	99.9%	99.5%	99.8%	99.8%
Finland	99.8%	99.9%	99.8%	99.9%	99.4%
Estonia	97.6%	98.4%	95.9%	98.7%	99.0%
Norway	99.5%	99.7%	99.4%	99.7%	99.0%
Malta	100.0%	100.0%	100.0%	100.0%	100.0%
Cyprus	98.0%	100.0%	100.0%	96.0%	100.0%
Not Specified	50.0%	00.0%	60.0%	66.7%	50.0%
<b>All subclass 417 first visa</b>	<b>99.3%</b>	<b>99.4%</b>	<b>99.1%</b>	<b>99.2%</b>	<b>99.3%</b>
<b>subclass 417 second visa</b>					
Taiwan	95.2%	95.6%	96.8%	97.8%	97.1%
United Kingdom	95.4%	97.1%	95.8%	97.4%	96.4%
Korea, South	92.4%	94.0%	94.5%	97.2%	95.9%
France	93.1%	96.0%	94.1%	96.4%	93.8%
Italy	96.0%	98.1%	95.9%	98.0%	97.7%
Japan	95.3%	96.6%	96.1%	97.3%	98.0%
Hong Kong (SAR of the PRC)	94.3%	93.4%	95.4%	96.6%	96.6%
Ireland, Republic of	96.9%	97.4%	95.5%	96.2%	96.2%
Germany, Fed Republic of	96.2%	96.5%	94.7%	97.4%	95.1%
Canada	95.5%	97.2%	94.4%	97.3%	95.2%
Estonia	92.5%	95.5%	94.7%	96.7%	95.0%
Netherlands, Kingdom of The	93.3%	98.2%	96.6%	97.9%	94.5%
Sweden	94.4%	98.6%	99.0%	98.4%	93.3%
Belgium	97.5%	97.0%	97.2%	98.1%	96.2%
Finland	95.8%	97.2%	96.3%	99.3%	92.9%
Denmark	94.3%	91.4%	94.4%	97.6%	92.7%
Malta	100.0%	100.0%	100.0%	100.0%	100.0%
Norway	100.0%	100.0%	89.5%	93.3%	100.0%
Cyprus	100.0%	94.7%	100.0%	70.0%	100.0%
Not Specified	00.0%	00.0%		00.0%	00.0%
<b>All subclass 417 second visa</b>	<b>94.9%</b>	<b>96.1%</b>	<b>95.7%</b>	<b>97.3%</b>	<b>96.3%</b>
<b>All 417 Working Holiday</b>	<b>98.3%</b>	<b>98.7%</b>	<b>98.5%</b>	<b>98.9%</b>	<b>98.7%</b>

Note: Further information on statistical tables presented by citizenship country can be found on page 1 under 'About this report'

## 3 Grant rate

3.03 Grant rate for Work and Holiday (subclass 462) visa applications decided in the 6 month period between 1 January 2016 and 30 June 2016 by citizenship country - comparison with previous four periods

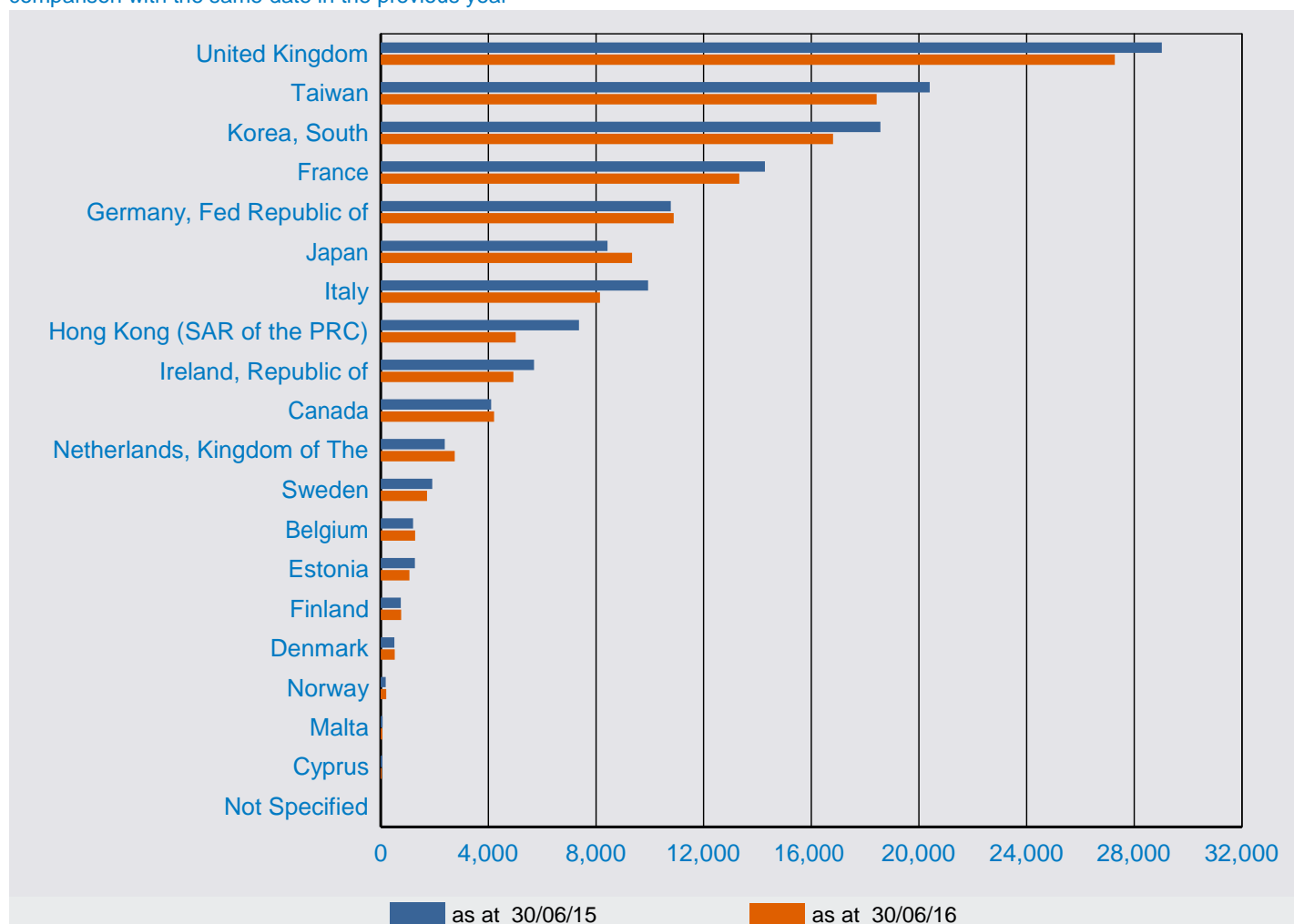
Citizenship Country	01/01/14 to 30/06/14	01/07/14 to 31/12/14	01/01/15 to 30/06/15	01/07/15 to 31/12/15	01/01/16 to 30/06/16
United States of America	99.6%	99.2%	98.8%	99.1%	99.2%
China, Peoples Republic of (excl SARs)	na	na	na	99.0%	98.0%
Chile	99.8%	99.8%	99.5%	99.8%	99.7%
Indonesia	98.3%	92.2%	96.6%	98.8%	99.4%
Israel	na	na	na	na	95.7%
Slovakia	na	na	na	na	100.0%
Portugal	na		96.5%	92.4%	94.8%
Uruguay	92.9%	100.0%	100.0%	100.0%	100.0%
Slovenia	na	na	na	na	97.4%
Bangladesh	100.0%	00.0%	71.0%	10.0%	36.8%
Turkey	100.0%	93.8%	81.8%	96.8%	100.0%
Spain	na	100.0%	96.3%	97.7%	00.0%
Poland		98.5%	89.7%	94.8%	
Malaysia	100.0%	100.0%		100.0%	
Thailand	98.4%	98.7%	96.0%	97.7%	
Argentina	97.3%	96.7%	na	96.6%	na
Not Specified	00.0%	100.0%			00.0%
<b>All 462 Work and Holiday</b>	<b>99.4%</b>	<b>98.3%</b>	<b>98.2%</b>	<b>98.6%</b>	<b>98.4%</b>

Note: Further information on statistical tables presented by citizenship country can be found on page 1 under 'About this report'

# 4 Visa Holders in Australia

## 4 Visa holders in Australia

4.01 Total number of Working Holiday (subclass 417) visa holders in Australia as at 30 June 2016 by citizenship country - comparison with the same date in the previous year

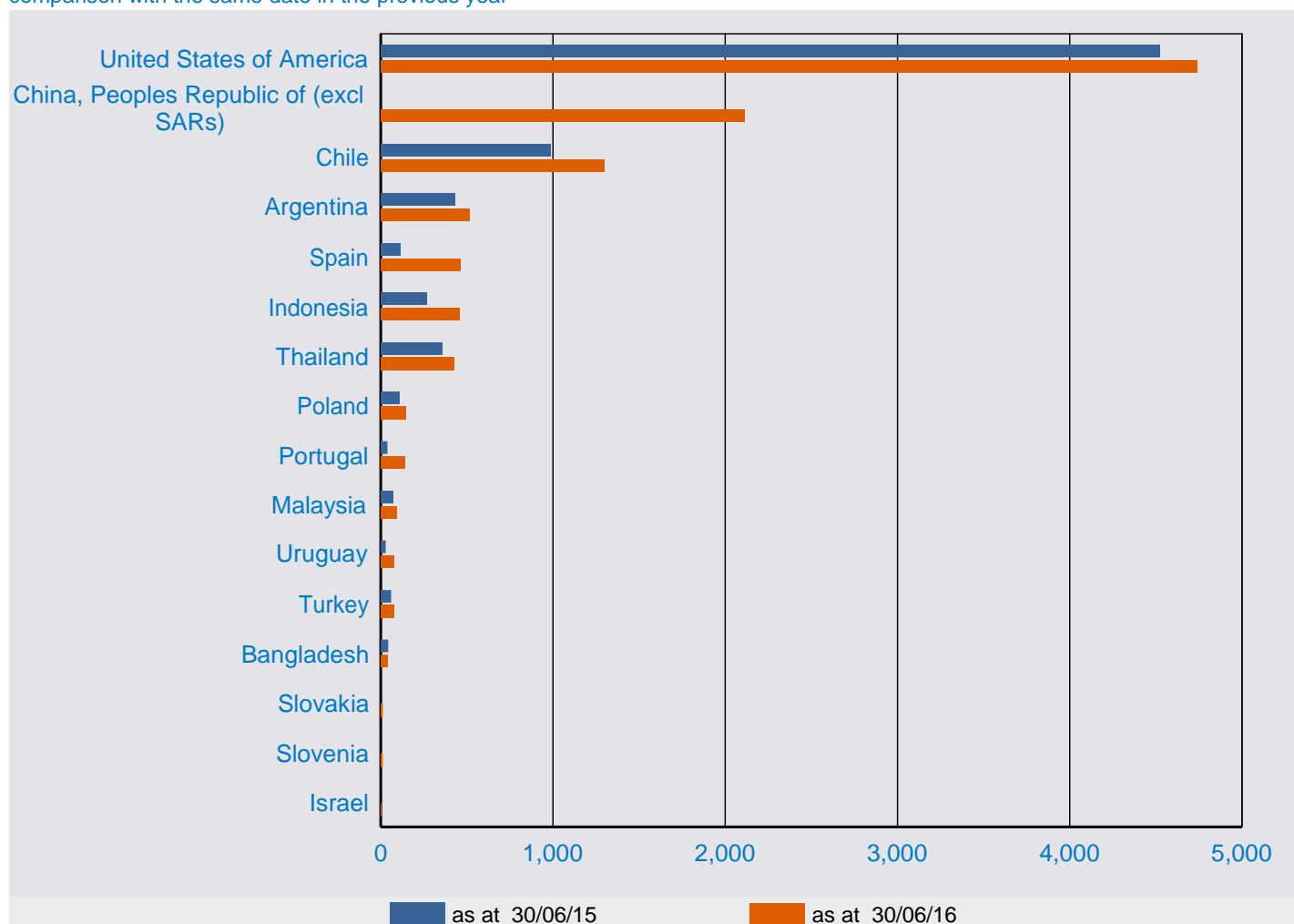


Citizenship Country	30/06/15	30/06/16	% Change from 30/06/15	30/06/16 as % of Total
United Kingdom	29,027	27,280	-6.0%	21.5%
Taiwan	20,396	18,428	-9.6%	14.5%
Korea, South	18,564	16,808	-9.5%	13.3%
France	14,273	13,327	-6.6%	10.5%
Germany, Fed Republic of	10,778	10,887	1.0%	8.6%
Japan	8,427	9,340	10.8%	7.4%
Italy	9,932	8,149	-18.0%	6.4%
Hong Kong (SAR of the PRC)	7,365	5,016	-31.9%	4.0%
Ireland, Republic of	5,696	4,927	-13.5%	3.9%
Canada	4,105	4,214	2.7%	3.3%
Netherlands, Kingdom of The	2,379	2,748	15.5%	2.2%
Sweden	1,914	1,722	-10.0%	1.4%
Belgium	1,206	1,279	6.1%	1.0%
Estonia	1,270	1,066	-16.1%	0.8%
Finland	744	759	2.0%	0.6%
Denmark	510	518	1.6%	0.4%
Norway	179	198	10.6%	0.2%
Malta	66	56	-15.2%	0.0%
Cyprus	60	33	-45.0%	0.0%
Not Specified	< 5	<5	0.0%	0.0%
<b>Total</b>	<b>136,892</b>	<b>126,756</b>	<b>-7.4%</b>	<b>100.0%</b>

Note: Further information on statistical tables presented by citizenship country can be found on page 1 under 'About this report'

## 4 Visa holders in Australia

4.02 Total number of Work and Holiday (subclass 462) visa holders in Australia as at 30 June 2016 by citizenship country - comparison with the same date in the previous year



Citizenship Country	30/06/15	30/06/16	% Change from 30/06/15	30/06/16 as % of Total
United States of America	4,523	4,742	4.8%	44.7%
China, Peoples Republic of (excl SARs)	na	2,111		19.9%
Chile	986	1,300	31.8%	12.2%
Argentina	432	515	19.2%	4.8%
Spain	112	463	313.4%	4.4%
Indonesia	266	459	72.6%	4.3%
Thailand	358	428	19.6%	4.0%
Poland	110	147	33.6%	1.4%
Portugal	38	141	271.1%	1.3%
Malaysia	70	91	30.0%	0.9%
Uruguay	28	78	178.6%	0.7%
Turkey	60	77	28.3%	0.7%
Bangladesh	43	41	-4.7%	0.4%
Slovakia	na	12		0.1%
Slovenia	na	11		0.1%
Israel	na	<5		0.0%
<b>Total</b>	<b>7,026</b>	<b>10,620</b>	<b>51.2%</b>	<b>100.0%</b>

Note: Further information on statistical tables presented by citizenship country can be found on page 1 under 'About this report'

## 4 Visa holders in Australia

4.03 Working Holiday Maker visa holders in Australia at 30 June 2016 by visa type and visa subclass - comparison with previous four periods

Visa Subclass	30/06/14	31/12/14	30/06/15	31/12/15	30/06/16
<b>417 Working Holiday</b>					
First visa	107,377	117,511	101,458	114,351	95,847
Second visa	37,817	37,088	35,434	32,250	30,909
<b>All 417 Working Holiday</b>	<b>145,194</b>	<b>154,599</b>	<b>136,892</b>	<b>146,601</b>	<b>126,756</b>
462 Work and Holiday	6,007	6,342	7,026	8,582	10,620
<b>All Working Holiday Maker</b>	<b>151,201</b>	<b>160,941</b>	<b>143,918</b>	<b>155,183</b>	<b>137,376</b>

This page is left intentionally blank.

