



Australian Government  
Department of Home Affairs

# **Working Holiday Maker visa program report**

31 December 2017

# Table of Contents

<b>About this report</b>	<b>1</b>
<b>Enquiries</b>	<b>1</b>
<b>Definition of terms</b>	<b>2</b>
<b>Background to the Working Holiday Maker program</b>	<b>3</b>
<b>Australia's Working Holiday Maker visa arrangements</b>	<b>5</b>
<b>Recent developments in the Working Holiday Maker program</b>	<b>6</b>
<b>Executive summary</b>	<b>7</b>
<b>Section 1 Lodged</b>	<b>9</b>
<b>Section 2 Granted</b>	<b>19</b>
<b>Section 3 Grant Rate</b>	<b>35</b>
<b>Section 4 Visa holders in Australia</b>	<b>39</b>

## About this report

This report provides monthly and program year data on the Working Holiday Maker (WHM) visa program administered by the Department of Home Affairs (the Department). The report has been provided to assist policymakers and stakeholder organisations.

This report is published every six months, and further developments will occur over time to increase and improve information sharing about the WHM visa program. Current and previous versions of the report are available on the Department's website. These reports, as well as a quarterly Working Holiday Maker visa grants pivot table, are available through: <http://www.homeaffairs.gov.au/about/reports-publications/research-statistics/statistics/visit-australia>

Data is sourced from several departmental visa processing and recording systems. Data can be dynamic and there can be delays in transmission of information from the Department's global operations. Variations in figures between this report and previous reports can occur. Due to these issues, data from the current financial year should always be considered provisional.

Further information about the Working Holiday Maker visa program is available on the Department's website at: <http://www.homeaffairs.gov.au/Trav/Visa-1/417->  
<http://www.homeaffairs.gov.au/Trav/Visa-1/462->

## Notes on statistical tables presented by citizenship country

A result of 'na' indicates that the country did not have a Working Holiday Maker arrangement with Australia during the specified period. This may be because the arrangement had not yet commenced or the arrangement is no longer in place. Refer to the table 'Australia's Working Holiday Maker arrangements' in the 'Background to the Working Holiday Maker visa program' section.

A citizenship country of 'Not Specified' can result from eligible dual nationality applicants where the non-eligible nationality has been recorded for the WHM application.

## Enquiries

Any comment or enquiries concerning this report should be sent to [statistical.coordination@homeaffairs.gov.au](mailto:statistical.coordination@homeaffairs.gov.au) quoting report ID BR0110.

# Definition of terms

## Citizenship Country

The country of citizenship of the visa applicant or visa holder. Where a visa applicant or visa holder has more than one citizenship country, either the citizenship of the travel document or the citizenship nominated by the visa applicant is used.

## Granted

Unless otherwise specified, the number of visas granted includes all visa grants.

## Snapshot date

The snapshot date is a point in time at which a count is undertaken. In this report, the number of visa holders in Australia at a point in time is used.

## Visa applicant

Used to refer to clients applying for a visa.

## Working Holiday Maker

Refers collectively to both the Working Holiday (subclass 417) visa and the Work and Holiday (subclass 462) visa.

## Background to the Working Holiday Maker visa program

The purpose of the Working Holiday Maker (WHM) visa program is to foster closer ties and cultural exchange between Australia and partner countries, with particular emphasis on young adults. It has been in existence since 1975. Today, the WHM visa program is comprised of the Working Holiday (subclass 417) visa and the Work and Holiday (subclass 462) visa programs. Partner countries initially comprised a relatively small number of Commonwealth countries, but the program has since grown to encompass 41 partner nations and regions (Hong Kong Special Administrative Region of the People's Republic of China) from across the globe.

Australia has an overarching bilateral arrangement, usually in the form of a Memorandum of Understanding, with each partner country. Of the 41 partner countries, 19 are Working Holiday (subclass 417) visa arrangements, and 22 are Work and Holiday (subclass 462) visa arrangements. The key differences between the two visas are that Work and Holiday visa arrangements generally have caps on the number of visas granted annually and additional eligibility requirements. The Work and Holiday visa arrangements that Australia has signed with Austria, the Czech Republic, Ecuador, Greece and Papua New Guinea were not in effect as at 31 December 2017. Each of these arrangements will be implemented once both Australia and the partner country have the necessary legislative and administrative systems in place. Announcements will be made on the Department's website once implementation processes are complete, enabling participants to lodge visa applications.

WHM arrangements are generally reciprocal, providing Australians with similar opportunities overseas. In considering whether to add new WHM partner countries, the Australian Government considers a range of factors, including the ability of the prospective partner to offer reciprocity to Australians, and the strength of any cultural and people-to-people links.

### Eligibility requirements

All WHM (both Working Holiday and Work and Holiday) visa applicants must:

- be aged 18-30 (inclusive) at time of application
- hold a passport from an eligible partner country. A list of eligible countries is provided in the 'Australia's Working Holiday Maker Visa Arrangements' section of this report
- not be accompanied by dependent children during their stay in Australia
- meet health and character requirements
- meet financial requirements.

Work and Holiday visa applicants must meet additional requirements, which may (or may not) include:

- functional English
- successful completion of at least two years of undergraduate university study
- a letter of home government support in association with their visa application

### Working while in Australia

All WHMs may work for the full duration of their 12 month stay in Australia, but cannot generally remain with any one employer for longer than six months (by operation of mandatory visa condition 8547).

A visa holder may work for the same employer for a combined total of more than six months, provided the work is undertaken in a different location and work in any one location does not exceed six months. Examples include different hotels or restaurants in the same chain; independently-owned franchises; and separate branches or facilities (such as farms or abattoirs) of the same organisation or business owner. However, working in a different position at the same workplace (for example, changing to a cleaning role after initially working for six months at reception) would be considered a continuation of employment with the same employer.

WHM visa holders may be eligible for an extension of the six month employment limitation in certain circumstances, including:

- Visa holders who have carried out six months work as an au pair anywhere in Australia may be given approval to work for up to six additional months with the same employer.
- Visa holders who have carried out six months work in eligible industries in northern Australia may be given approval to work for up to six additional months with the same employer. The eligible industries are aged and disability care, agriculture, forestry and fishing, construction, mining, and tourism and hospitality.

## Studying while in Australia

All WHMs are entitled to study for a period of up to four months during their 12 month stay in Australia.

## Second Working Holiday

Participants are generally limited to holding only one Working Holiday visa or Work and Holiday visa in their lifetime.

However, first-time Working Holiday (subclass 417) visa holders who complete three months of 'specified work' in regional Australia during their stay acquire eligibility to apply for a second such visa.

'Specified work' includes work in the agriculture, mining and construction industries. For the purposes of second Working Holiday visa eligibility, regional Australia includes large parts of rural and regional Australia, which are identified in a list of postcodes available on the Department's website at:

<http://www.homeaffairs.gov.au/Trav/Visa-1/417->.

## Second Work and Holiday

To apply for a second Work and Holiday visa, applicants must have already completed three months of specified subclass 462 work in northern Australia. This work must have been completed while on a first Work and Holiday visa and must have been undertaken after 18 November 2016 in order to be counted towards the three months' specified subclass 462 work total.

Specified subclass 462 work is work that is undertaken in a 'specified' field or industry in a designated area in northern Australia. Further information on the second 462 is available on the Department's website at <http://www.homeaffairs.gov.au/Trav/Visa-1/462->

## Processing times

In March 2017, the Department introduced the publishing of current global visa and citizenship processing times on its website. Global visa and citizenship processing times are updated monthly, and have replaced the previously published service standards. From 1 July 2017 the Department ceased reporting on service standards and reports no longer include this information. Global visa and citizenship processing times are available from the following website: <http://www.homeaffairs.gov.au/about/access-accountability/service-standards/global-visa-citizenship-processing-times>

## Countries with which Australia is currently negotiating new arrangements

- |             |                    |
|-------------|--------------------|
| 1 Andorra   | 8 Mexico           |
| 2 Brazil    | 9 Monaco           |
| 3 Croatia   | 10 Mongolia        |
| 4 Fiji      | 11 Philippines     |
| 5 India     | 12 Solomon Islands |
| 6 Latvia    | 13 Switzerland     |
| 7 Lithuania |                    |

## Australia's Working Holiday Maker visa arrangements

Commencement Date	Country / Region	Type of Arrangement	Cap
1975	United Kingdom	Working Holiday (SC 417)	N/A
1975	Ireland	Working Holiday (SC 417)	N/A
1975	Canada	Working Holiday (SC 417)	N/A
1 December 1980	Japan	Working Holiday (SC 417)	N/A
1 July 1995	South Korea	Working Holiday (SC 417)	N/A
1 July 1996	Malta	Working Holiday (SC 417)	N/A
1 July 2000	Germany	Working Holiday (SC 417)	N/A
1 July 2001	Sweden	Working Holiday (SC 417)	N/A
1 July 2001	Norway	Working Holiday (SC 417)	N/A
1 July 2001	Denmark	Working Holiday (SC 417)	N/A
15 September 2001	Hong Kong (HKSAR of the PRC)	Working Holiday (SC 417)	N/A
1 May 2002	Finland	Working Holiday (SC 417)	N/A
1 July 2002	Cyprus	Working Holiday (SC 417)	N/A
2 January 2004	Italy	Working Holiday (SC 417)	N/A
20 February 2004	France	Working Holiday (SC 417)	N/A
1 November 2004	Taiwan	Working Holiday (SC 417)	N/A
1 November 2004	Belgium	Working Holiday (SC 417)	N/A
20 May 2005	Estonia	Working Holiday (SC 417)	N/A
1 August 2005	Thailand	Work and Holiday (SC 462)	500
1 March 2006	Chile	Work and Holiday (SC 462)	2,000
1 July 2006	Netherlands	Working Holiday (SC 417)	N/A
31 March 2007	Turkey	Work and Holiday (SC 462)	100
31 October 2007	United States of America	Work and Holiday (SC 462)	N/A
1 February 2009	Malaysia	Work and Holiday (SC 462)	100
1 July 2009	Indonesia	Work and Holiday (SC 462)	1,000
31 December 2010	Bangladesh	Work and Holiday (SC 462)	100
29 February 2012	Argentina	Work and Holiday (SC 462)	1500
1 April 2013	Uruguay	Work and Holiday (SC 462)	200
1 August 2014	Poland	Work and Holiday (SC 462)	500
23 November 2014	Portugal	Work and Holiday (SC 462)	200
23 November 2014	Spain	Work and Holiday (SC 462)	1,500
21 September 2015	China (excl. SARs)	Work and Holiday (SC 462)	5,000
1 January 2016	Slovak Republic	Work and Holiday (SC 462)	200
1 January 2016	Slovenia	Work and Holiday (SC 462)	200
1 June 2016	Israel	Work and Holiday (SC 462)	500
1 January 2017	Hungary	Work and Holiday (SC 462)	200
1 January 2017	San Marino	Work and Holiday (SC 462)	100
1 January 2017	Luxembourg	Work and Holiday (SC 462)	100
1 March 2017	Vietnam	Work and Holiday (SC 462)	200
1 August 2017	Singapore	Work and Holiday (SC 462)	500
1 October 2017	Peru	Work and Holiday (SC 462)	100
Signed 12 October 2011	Papua New Guinea*	Work and Holiday (SC 462)	100
Signed 14 May 2014	Greece*	Work and Holiday (SC 462)	500
Signed 19 January 2017	Ecuador*	Work and Holiday (SC 462)	100
Signed 19 October 2017	Austria*	Work and Holiday (SC 462)	200
Signed 19 October 2017	The Czech Republic*	Work and Holiday (SC 462)	500

\* Not yet in effect as at 31 December 2017

## Recent developments in the Working Holiday Maker visa program

### Commencement of Work and Holiday visa arrangements with Singapore and Peru

Work and Holiday (subclass 462) visa arrangements between Australia and Singapore (500 cap) commenced on 1 August 2017 and Peru (200 cap) on 1 October 2017, enabling the commencement of visa grants under these arrangements.

### Work and Holiday arrangement signed with Austria and the Czech Republic

A new Work and Holiday (subclass 462) visa arrangement with both Austria (200 cap) and the Czech Republic (500 cap) was signed on 19 October 2017. Once implemented, these arrangements will enable young, educated people from each country to undertake a working holiday in Australia and allow Australians to have a working holiday in these countries as well.

As at 31 December 2017, a commencement date has not been determined for the Work and Holiday visa arrangements with Austria and the Czech Republic. The arrangements will commence at a time to be agreed with the partner countries government.

Further Work and Holiday program developments, including commencement dates for new Work and Holiday visa arrangements, will be announced on the Department's website at: <http://www.homeaffairs.gov.au/Trav/Visa-1/462->.

### Second Work and Holiday (subclass 462) visa initiatives to support northern Australia

On 18 November 2016, a second Work and Holiday (subclass 462) visa commenced. From that date, subclass 462 visa holders who undertake three months (88 days) work during their stay in agriculture, tourism or hospitality industries within northern Australia may become eligible to apply for a second Work and Holiday visa. For this purpose, northern Australia includes all of the Northern Territory, and those parts of Western Australia and Queensland above the Tropic of Capricorn. A list of eligible postcodes is available at the Department's website at <http://www.homeaffairs.gov.au/Trav/Visa-1/462->.

There have been 2012 second subclass 462 visa grants since the commencement of this initiative (409 in 2016-17 and 1,603 in 2017-18 to 31 December 2017).



# Executive Summary

## Key Points

- In the six months to 31 December 2017, a total of 114,849 Working Holiday Maker (WHM) visas (subclass 417 and subclass 462) were granted, a 0.4 per cent reduction compared to 2016-17.
- There was a 3.1 per cent reduction in first Working Holiday (subclass 417) visa grants to 82,947 and a 7.5 per cent reduction in second Working Holiday visa grants to 16,174.
- Work and Holiday (subclass 462) visa grants increased by 15.6 per cent to 14,125. There were 1,603 grants of the new second Work and Holiday visa in the six months to 31 December 2017.
- There were 146,431 WHM visa holders in Australia at 31 December 2017, a 1.4 per cent reduction compared to 31 December 2016.

## 1 Applications lodged

In the six months to 31 December 2017, there was a 2.8 per cent increase in WHM visa application lodgements compared to the same period in 2016-17.

There was a total of 84,201 first Working Holiday (subclass 417) visa applications, 20,118 second Working Holiday (subclass 417) visa applications, 13,515 first Work and Holiday (subclass 462) visa applications and 2,128 second Work and Holiday (subclass 462) visa applications lodged in the six months to 31 December 2017.

The very high average grant rate of WHM visas (98.8 per cent - see Section 3) means the number of visas granted tends to be very close to the number of visa applications lodged during the period, noting that there can be a delay between lodgement and grant.

## 2 Visas granted

### First Working Holiday (subclass 417) visa program

A total of 82,947 first Working Holiday visas were granted in the six months to 31 December 2017. This is a 3.1 per cent reduction compared to the corresponding period in 2016-17.

Reductions in Working Holiday visa grant numbers may be influenced by a range of factors including changing economic conditions and seasonal variability in visa application numbers in partner countries.

The top five countries for first Working Holiday visa grants were:

- United Kingdom (down 10.5 per cent to 15,949)
- Germany (down 8.6 per cent to 13,505)
- France (up 6.6 per cent to 11,514)
- South Korea (down 1.2 per cent to 8,940)
- Taiwan (up 14.4 per cent to 7,163).

### Second Working Holiday (subclass 417) visa program

A total of 16,174 second Working Holiday visas were granted in the six months to 31 December 2017. This is a 7.5 per cent reduction compared to the corresponding period in 2016-17.

There is a direct but delayed flow-on relationship between the rate of first Working Holiday visa grants and the rate of second Working Holiday visa grants, which usually takes 12 to 18 months to be reflected in the data. Where there has been an increase or decrease in first Working Holiday visa grants, a similar but delayed trend could be expected to flow through to second Working Holiday visa grants.

The top five countries for second Working Holiday visa grants were:

- United Kingdom (down 2.0 per cent to 3,898)
- Taiwan (down 16.1 per cent to 3,091)
- South Korea (down 3.2 per cent to 1,857)
- France (down 10.2 per cent to 1,354)
- Italy (down 1.6 per cent to 1,144).

In the six months to 31 December 2017, around 94 per cent of the second Working Holiday visa applicants indicated they engaged in agricultural work to acquire eligibility, around five per cent undertook construction work, and less than one per cent undertook mining work (see Table 2.21).

The employment of the remaining participants (less than one per cent) has not been disaggregated.

### Combined Working Holiday (subclass 417) visa program

A total of 99,121 combined Working Holiday (first and second) visas were granted in the six months to 31 December 2017.

# Executive Summary – continued

## First Work and Holiday (subclass 462) visa program

A total of 14,125 first Work and Holiday visas were granted in the six months to 31 December 2017. This is a 15.6 per cent increase compared to the same period in 2016-17.

The top five countries for first visa grants under the Work and Holiday visa program were:

- United States of America (down 9.1 per cent to 3,724)
- China (up 9.5 percent to 3,187)
- Chile (up 33.3 per cent to 2,001)
- Spain (up 140.3 per cent to 1,432)
- Argentina (up 51.9 percent to 1,063).

The high percentage increase for Chile, Spain and Argentina is due to an increase in the cap for these countries.

## Second Work and Holiday (subclass 462) visa program

A total of 1,603 second Work and Holiday visas were granted in the six months to 31 December 2017.

The top five countries for second Work and Holiday visa grants were:

- China (475)
- Indonesia (330)
- Chile (225)
- United States of America (223)
- Argentina (87)

## 3 Grant rates

The grant rate for first Working Holiday visas for the six months to 31 December 2017 was 99.3 per cent. The grant rate for second Working Holiday visas was 97.5 per cent.

The grant rate for first Work and Holiday visas was 97.4 per cent and the grant rate for second Work and Holiday visas was 96.8 per cent.

The grant rates for WHM visas are indicative of the low risk nature of this caseload. The large proportion of online applications for this caseload also contributes to the high grant rate. A number of automated eligibility checks occur during online applications, alerting clients early in the process if they do not meet visa requirements.

## 4 Working Holiday Makers in Australia

### Working Holiday (subclass 417) visa holders

As at 31 December 2017, there were 131,557 Working Holiday visa holders in Australia (first and second visas). This is a 2.8 per cent reduction in the number of Working Holiday visa holders in Australia compared to 31 December 2016.

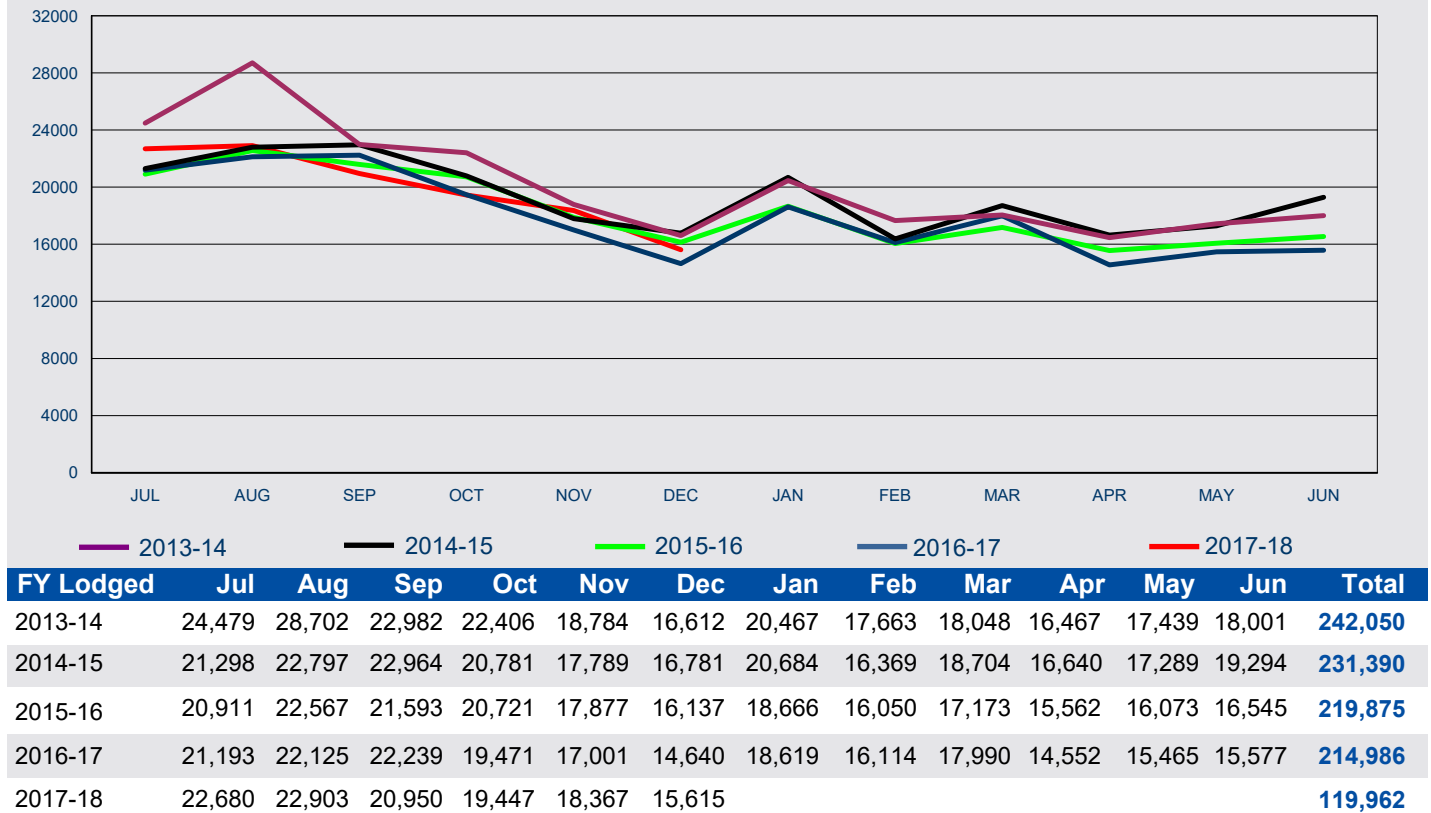
### Work and Holiday (subclass 462) visa holders

As at 31 December 2017, there were 14,874 Work and Holiday visa holders in Australia. This is an 11.4 per cent increase in the number of Work and Holiday visa holders in Australia compared to 31 December 2017.

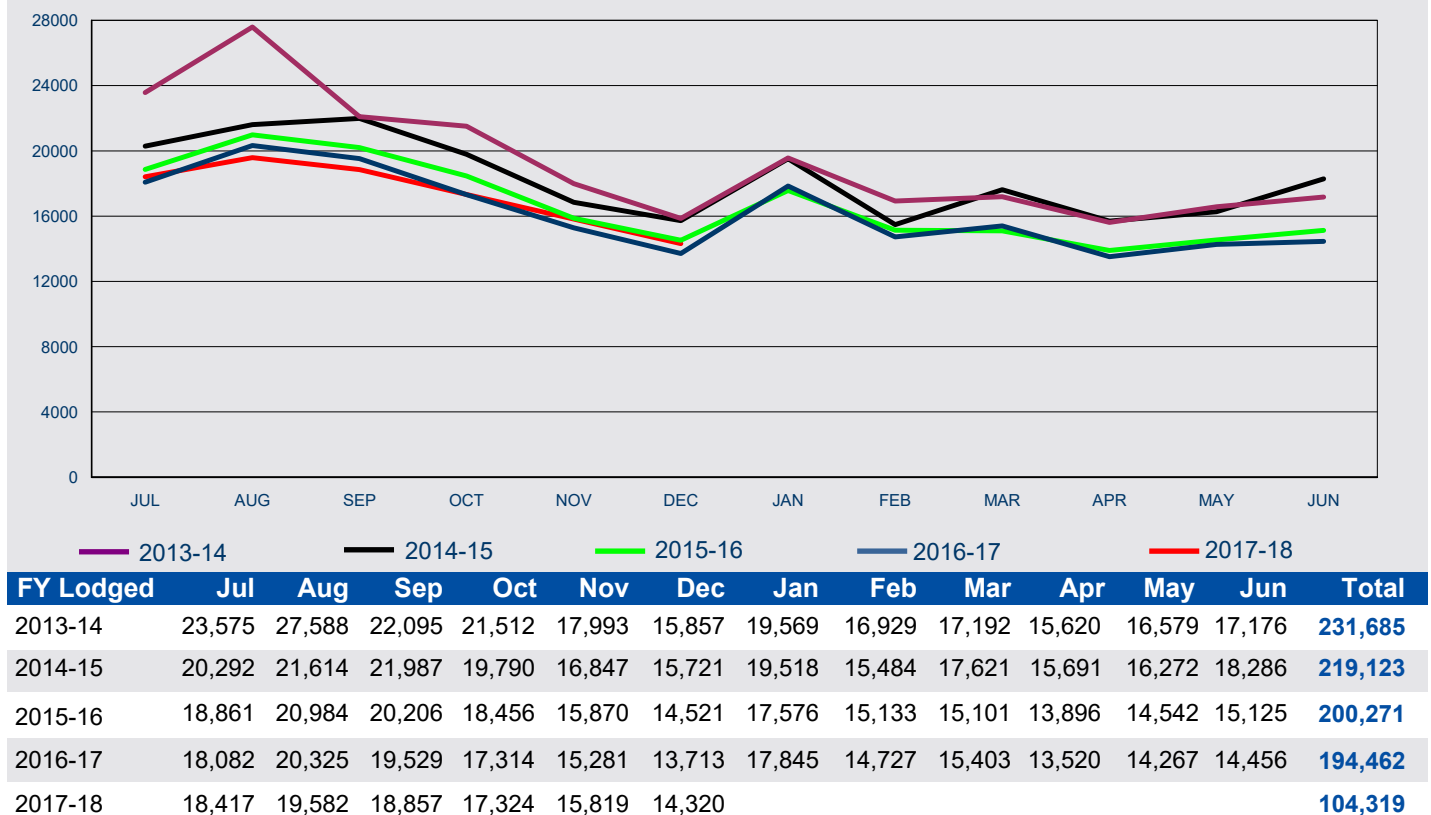
# 1 Lodged

# 1 Lodged

1.01 Total number of Working Holiday Maker visa applications lodged in 2017-18 to 31 December 2017 by month - comparison with previous four financial years

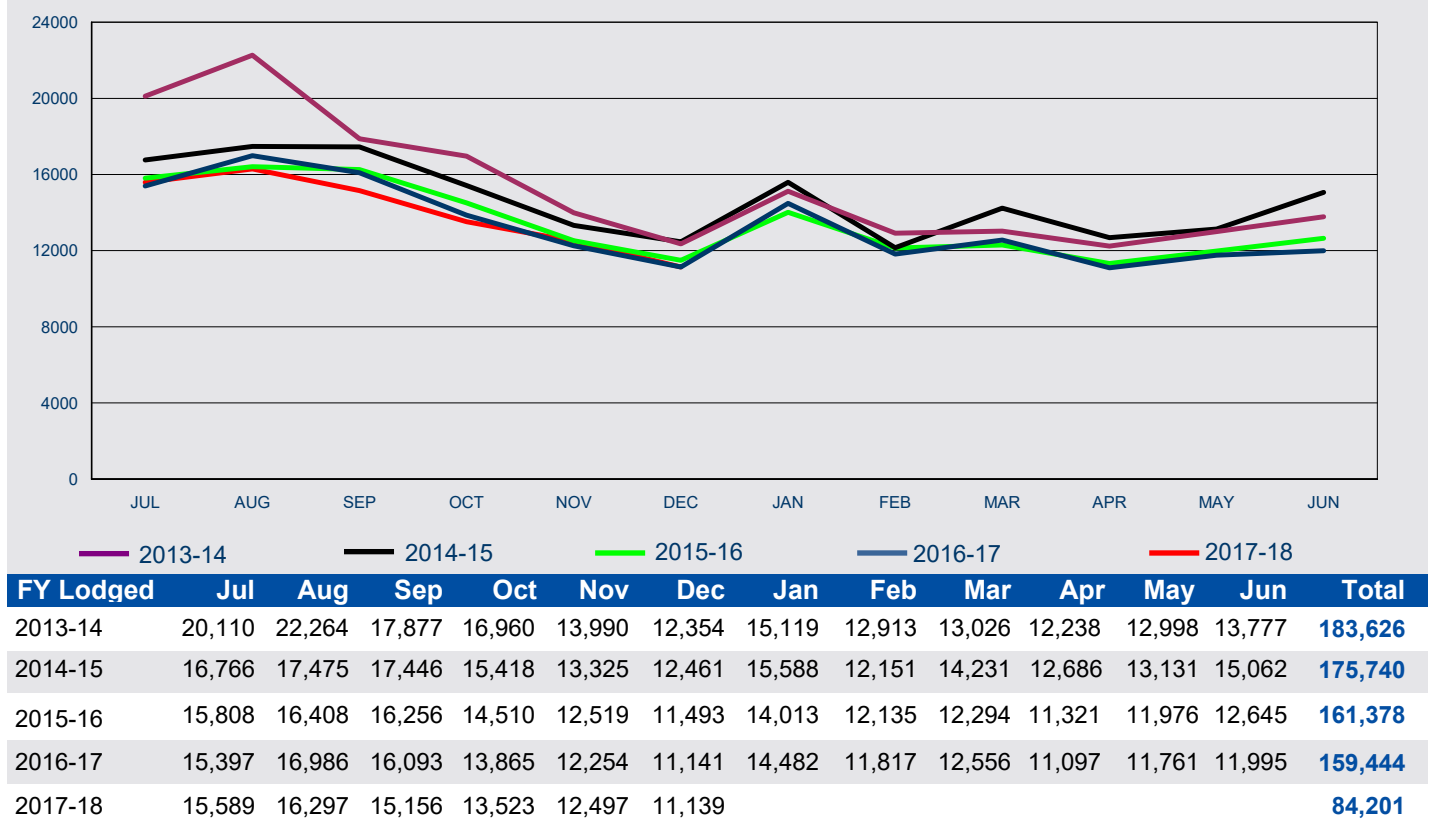


1.02 Total number of Working Holiday (subclass 417) visa applications lodged in 2017-18 to 31 December 2017 by month - comparison with previous four financial years

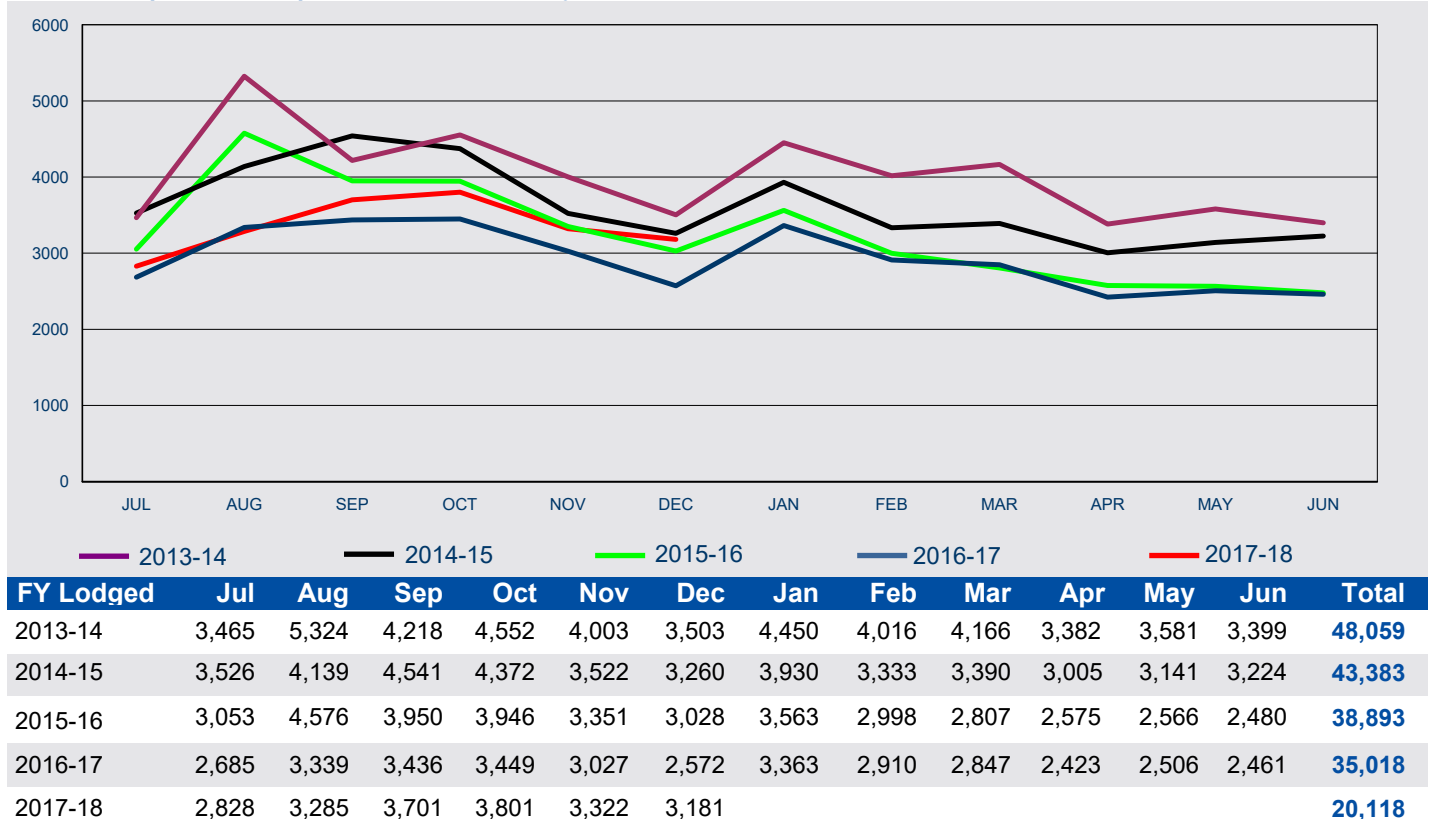


# 1 Lodged

1.03 Number of first Working Holiday (subclass 417) visa applications lodged in 2017-18 to 31 December 2017 by month - comparison with previous four financial years

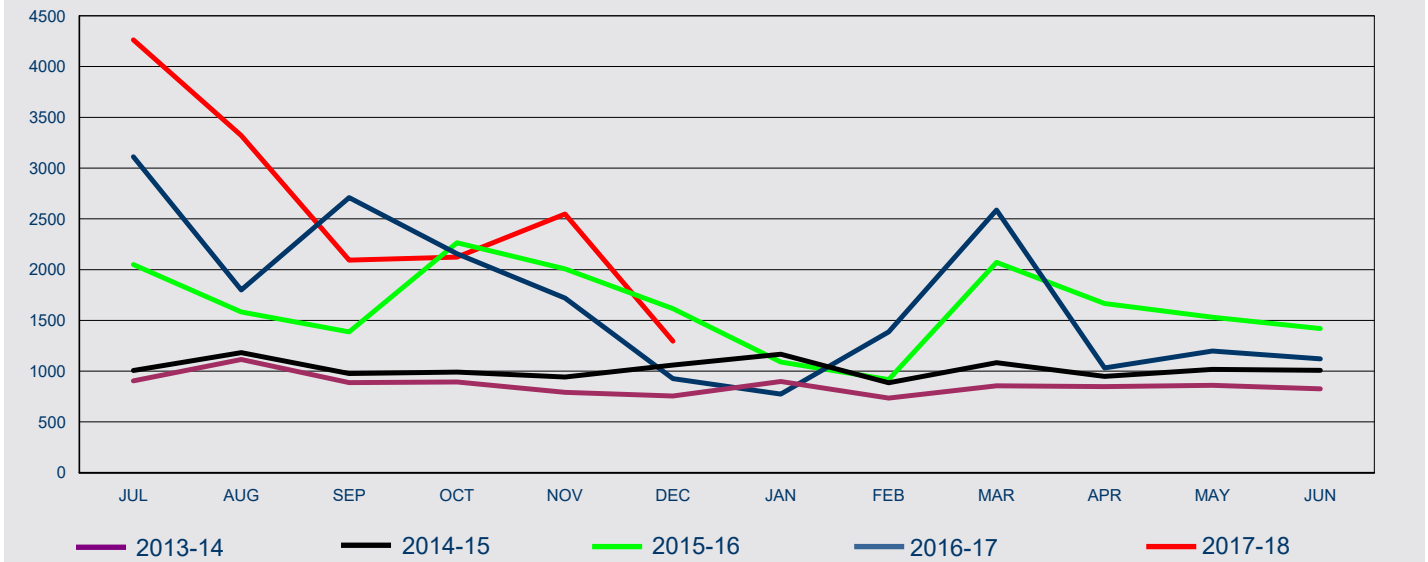


1.04 Number of second Working Holiday (subclass 417) visa applications lodged in 2017-18 to 31 December 2017 by month - comparison with previous four financial years



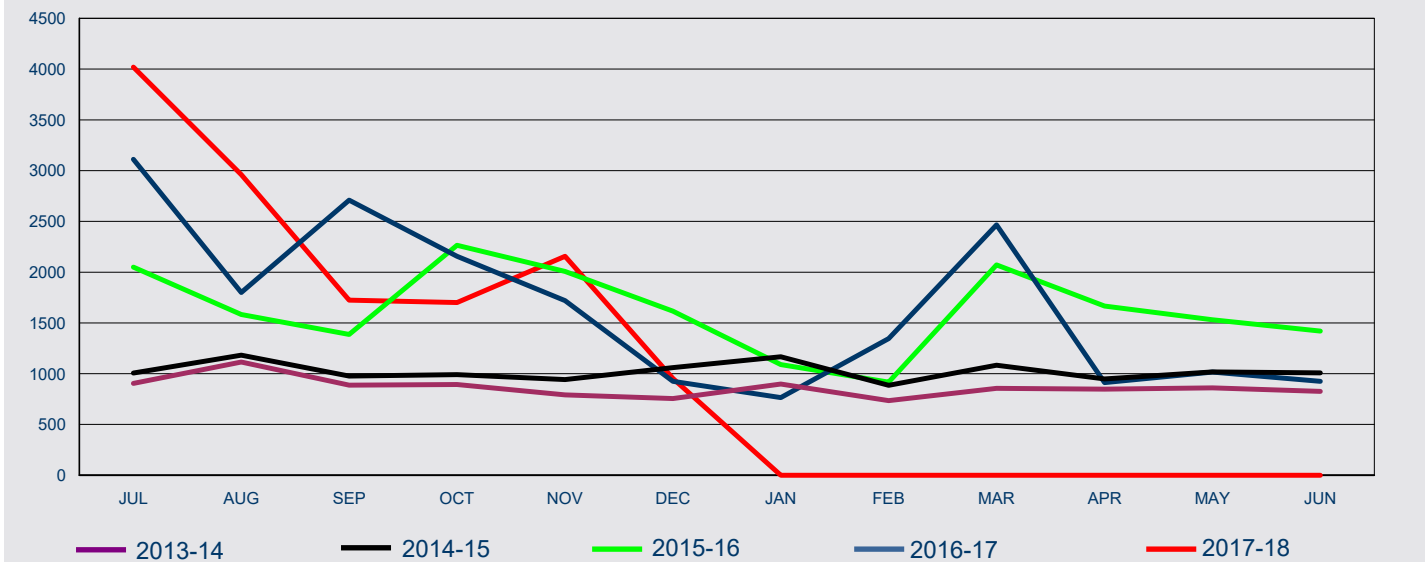
# 1 Lodged

1.05 Total number of Work and Holiday (subclass 462) visa applications lodged in 2017-18 to 31 December 2017 by month - comparison with previous four financial years



FY Lodged	Jul	Aug	Sep	Oct	Nov	Dec	Jan	Feb	Mar	Apr	May	Jun	Total
2013-14	904	1,114	887	894	791	755	898	734	856	847	860	825	10,365
2014-15	1,006	1,183	977	991	942	1,060	1,166	885	1,083	949	1,017	1,008	12,267
2015-16	2,050	1,583	1,387	2,265	2,007	1,616	1,090	917	2,072	1,666	1,531	1,420	19,604
2016-17	3,111	1,800	2,710	2,157	1,720	927	774	1,387	2,587	1,032	1,198	1,121	20,524
2017-18	4,263	3,321	2,093	2,123	2,548	1,295							15,643

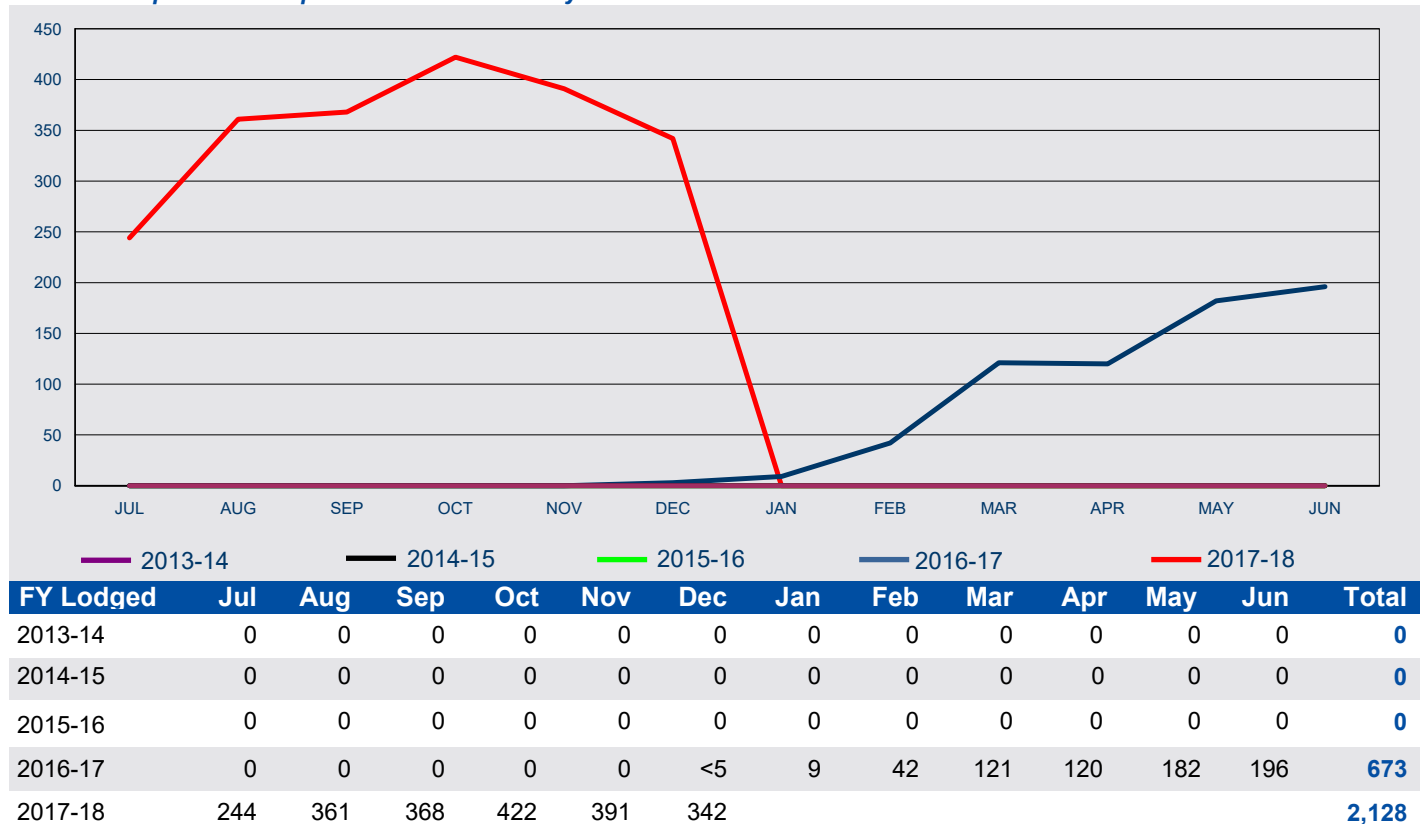
1.06 Number of first Working and Holiday (subclass 462) visa applications lodged in 2017-18 to 31 December 2017 by month - comparison with previous four financial years



FY Lodged	Jul	Aug	Sep	Oct	Nov	Dec	Jan	Feb	Mar	Apr	May	Jun	Total
2013-14	904	1,114	887	894	791	755	898	734	856	847	860	825	10,365
2014-15	1,006	1,183	977	991	942	1,060	1,166	885	1,083	949	1,017	1,008	12,267
2015-16	2,050	1,583	1,387	2,265	2,007	1,616	1,090	917	2,072	1,666	1,531	1,420	19,604
2016-17	3,111	1,800	2,710	2,157	1,720	924	765	1,345	2,466	912	1,016	925	19,851
2017-18	4,019	2,960	1,725	1,701	2,157	953							13,515

# 1 Lodged

1.07 Number of second Working and Holiday (subclass 462) visa applications lodged in 2017-18 to 31 December 2017 by month - comparison with previous four financial years

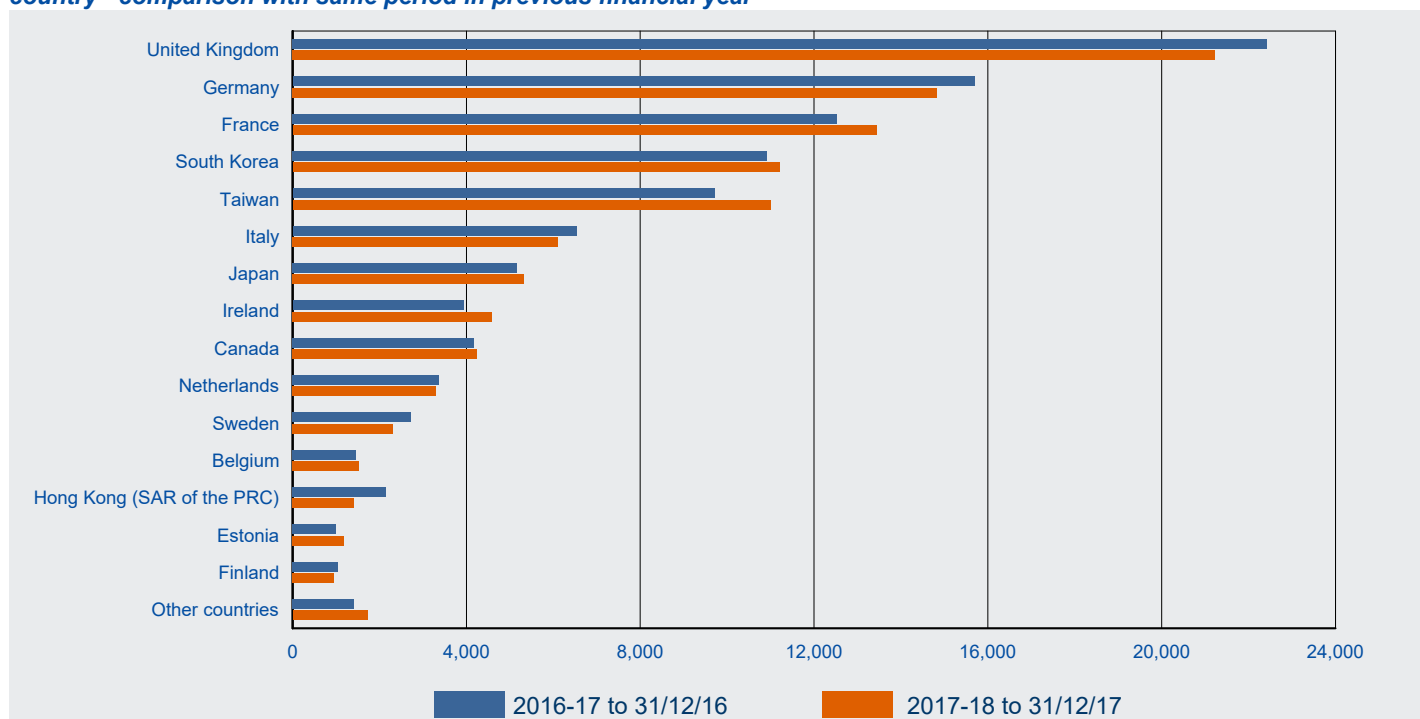


1.08 Total number of Working Holiday Maker visa applications lodged in the 6 month period ending 31 December 2017 by visa subclass and visa type - comparison with previous four periods

Visa Subclass	01/07/15 to 31/12/15	01/01/16 to 30/06/16	01/07/16 to 31/12/16	01/01/17 to 30/06/17	01/07/17 to 31/12/17
<b>417 Working Holiday</b>					
First visa	86,994	74,384	85,736	73,708	84,201
Second visa	21,904	16,989	18,508	16,510	20,118
<b>All 417 Working Holiday</b>	<b>108,898</b>	<b>91,373</b>	<b>104,244</b>	<b>90,218</b>	<b>104,319</b>
<b>462 Work and Holiday</b>					
First visa	10,908	8,696	12,422	7,429	13,515
Second visa	0	0	<5	670	2,128
<b>All 462 Work and Holiday</b>	<b>10,908</b>	<b>8,696</b>	<b>12,425</b>	<b>8,099</b>	<b>15,643</b>
<b>All Working Holiday Maker</b>	<b>119,806</b>	<b>100,069</b>	<b>116,669</b>	<b>98,317</b>	<b>119,962</b>

# 1 Lodged

1.09 Number of Working Holiday (subclass 417) visa applications lodged in 2017-18 to 31 December 2017 by citizenship country - comparison with same period in previous financial year



Citizenship Country	2016-17 to 31/12/16	2017-18 to 31/12/17	% Change from 2016-17	2017-18 as % of Total
United Kingdom	22,426	21,225	-5.4%	20.3%
Germany	15,696	14,821	-5.6%	14.2%
France	12,534	13,436	7.2%	12.9%
South Korea	10,920	11,203	2.6%	10.7%
Taiwan	9,712	10,999	13.3%	10.5%
Italy	6,531	6,101	-6.6%	5.8%
Japan	5,159	5,317	3.1%	5.1%
Ireland	3,934	4,585	16.5%	4.4%
Canada	4,168	4,241	1.8%	4.1%
Netherlands	3,374	3,301	-2.2%	3.2%
Sweden	2,724	2,313	-15.1%	2.2%
Belgium	1,464	1,522	4.0%	1.5%
Hong Kong (SAR of the PRC)	2,153	1,406	-34.7%	1.3%
Estonia	991	1,185	19.6%	1.1%
Finland	1,044	945	-9.5%	0.9%
Denmark	1,000	916	-8.4%	0.9%
Norway	311	401	28.9%	0.4%
Malta	59	69	16.9%	0.1%
Cyprus	41	36	-12.2%	0.0%
Not Specified	< 5	297	9800.0%	0.3%
<b>Total</b>	<b>104,244</b>	<b>104,319</b>	<b>0.1%</b>	<b>100.0%</b>

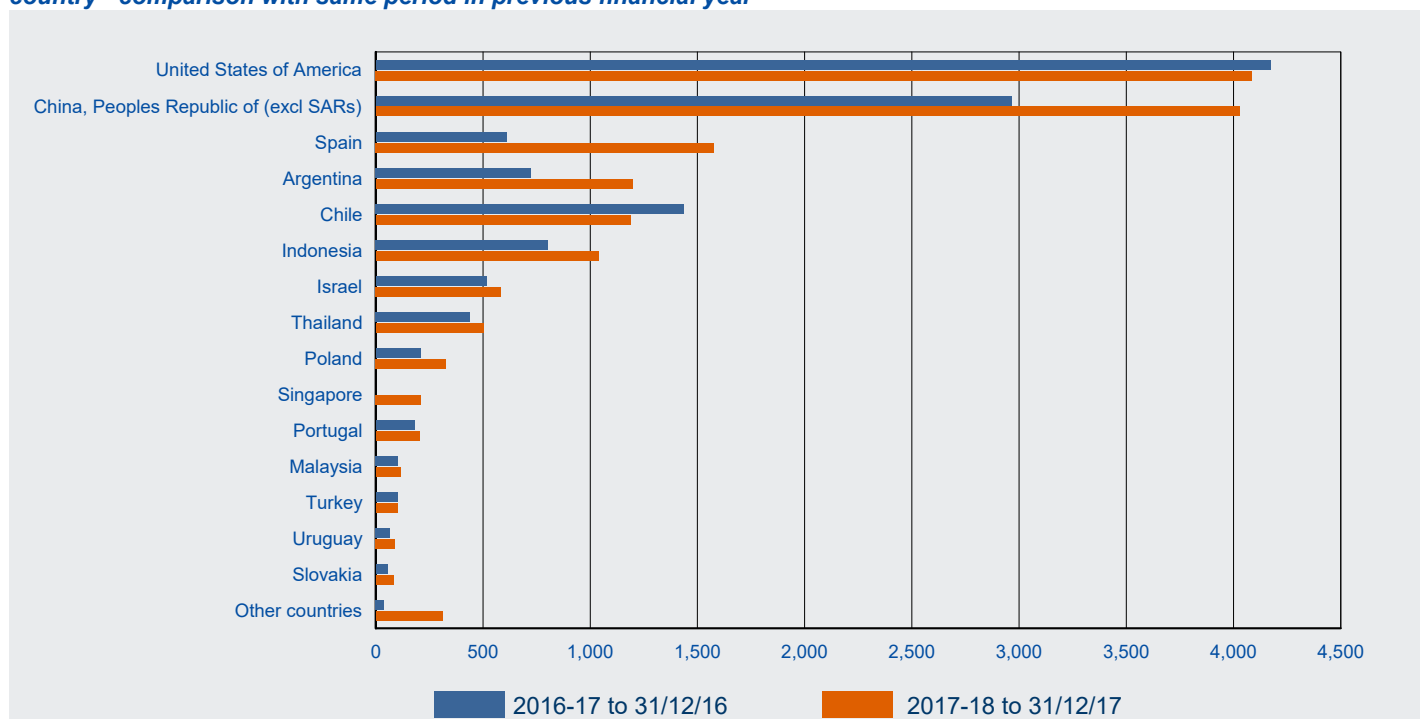
Note 1: Further information on statistical tables presented by citizenship country can be found on page 1 under 'About this report'

Note 2: Graph above shows top 15 countries only, the remaining countries are grouped under 'Other countries'.



# 1 Lodged

## 1.10 Number of Work and Holiday (subclass 462) visa applications lodged in 2017-18 to 31 December 2017 by citizenship country - comparison with same period in previous financial year



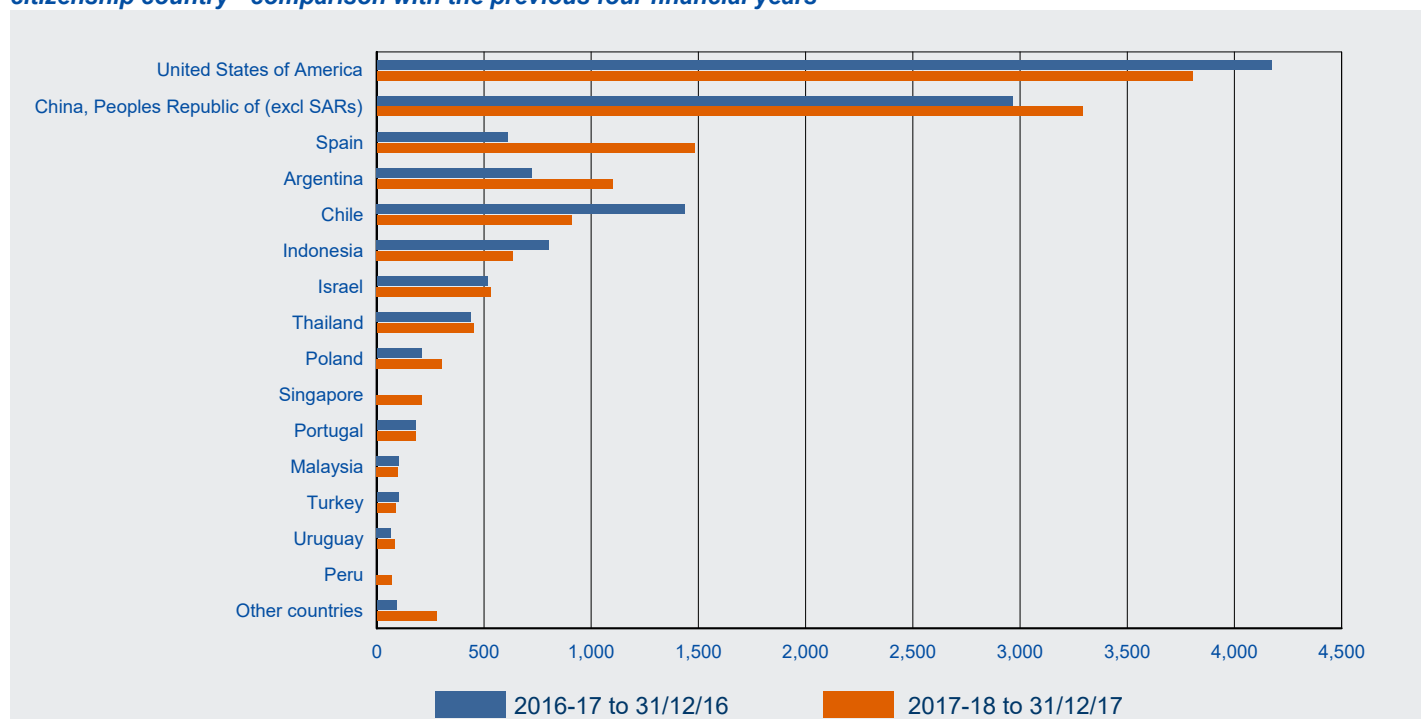
Citizenship Country	2016-17 to 31/12/16	2017-18 to 31/12/17	% Change from 2016-17	2017-18 as % of Total
United States of America	4,173	4,086	-2.1%	26.1%
China, Peoples Republic of (excl SARs)	2,965	4,029	35.9%	25.8%
Spain	609	1,577	158.9%	10.1%
Argentina	725	1,197	65.1%	7.7%
Chile	1,438	1,187	-17.5%	7.6%
Indonesia	803	1,039	29.4%	6.6%
Israel	517	584	13.0%	3.7%
Thailand	439	502	14.4%	3.2%
Poland	210	328	56.2%	2.1%
Singapore	na	211	na	1.3%
Portugal	181	205	13.3%	1.3%
Malaysia	104	114	9.6%	0.7%
Turkey	103	102	-1.0%	0.7%
Uruguay	66	90	36.4%	0.6%
Slovakia	54	82	51.9%	0.5%
Peru	na	71	na	0.5%
Hungary	na	63	na	0.4%
Vietnam	na	51	na	0.3%
Slovenia	24	46	91.7%	0.3%
Bangladesh	< 5	8	700.0%	0.1%
Luxembourg	na	5	na	0.0%
Not Specified	13	66	407.7%	0.4%
<b>Total</b>	<b>12,425</b>	<b>15,643</b>	<b>25.9%</b>	<b>100.0%</b>

Note 1: Further information on statistical tables presented by citizenship country can be found on page 1 under 'About this report'

Note 2: Graph above shows top 15 countries only, the remaining countries are grouped under 'Other countries'.

# 1 Lodged

## 1.11 Number of first Working and Holiday (subclass 462) visa applications lodged in 2017-18 to 31 December 2017 by citizenship country - comparison with the previous four financial years



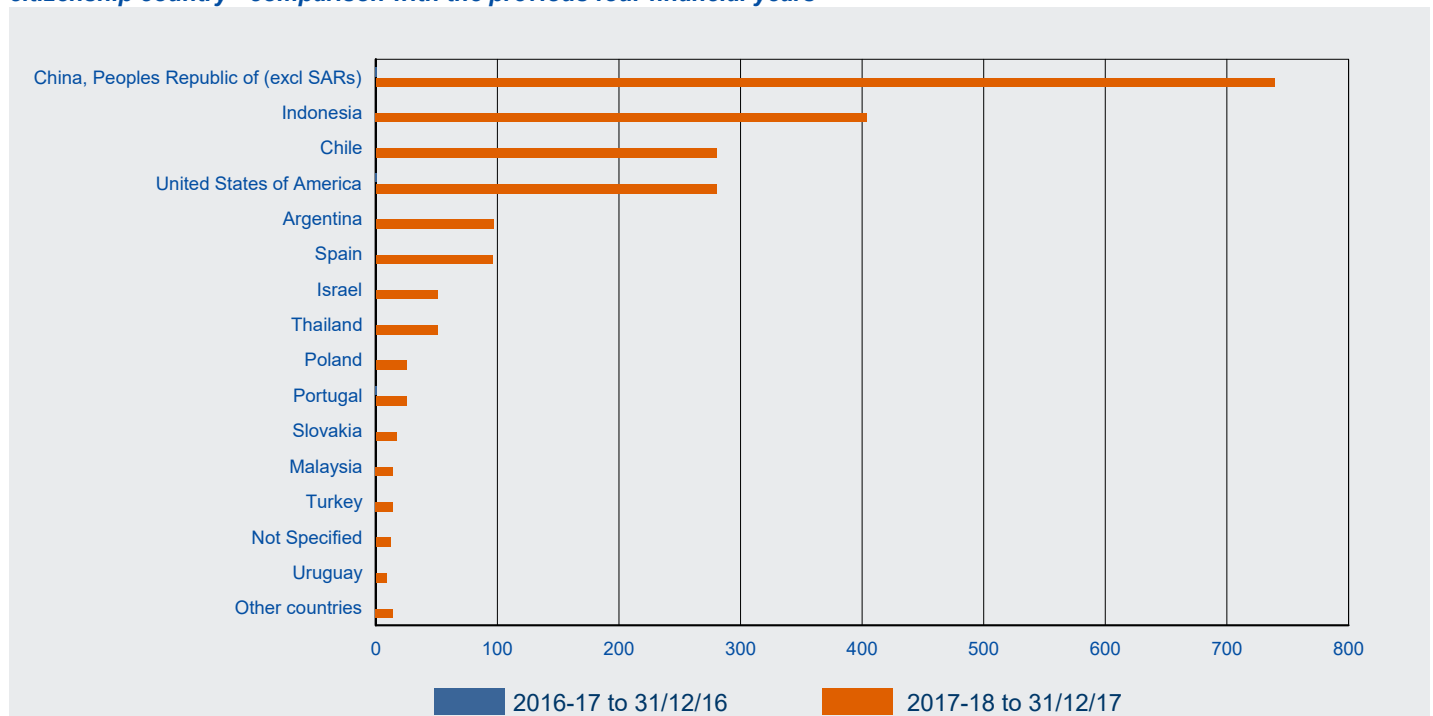
Citizenship Country	2016-17 to 31/12/16	2017-18 to 31/12/17	% Change from 2016-17	2017-18 as % of Total
United States of America	4,172	3,806	-8.8%	28.2%
China, Peoples Republic of (excl SARs)	2,964	3,290	11.0%	24.3%
Spain	609	1,481	143.2%	11.0%
Argentina	725	1,100	51.7%	8.1%
Chile	1,438	907	-36.9%	6.7%
Indonesia	803	635	-20.9%	4.7%
Israel	517	533	3.1%	3.9%
Thailand	439	451	2.7%	3.3%
Poland	210	303	44.3%	2.2%
Singapore	na	211	na	1.6%
Portugal	180	180	0.0%	1.3%
Malaysia	104	100	-3.8%	0.7%
Turkey	103	88	-14.6%	0.7%
Uruguay	66	81	22.7%	0.6%
Peru	na	71	na	0.5%
Slovakia	54	65	20.4%	0.5%
Hungary	na	63	na	0.5%
Vietnam	na	50	na	0.4%
Slovenia	24	41	70.8%	0.3%
Luxembourg	na	5	na	0.0%
Bangladesh	< 5		-100.0%	
Not Specified	13	54	315.4%	0.4%
<b>Total</b>	<b>12,422</b>	<b>13,515</b>	<b>8.8%</b>	<b>100.0%</b>

Note 1: Further information on statistical tables presented by citizenship country can be found on page 1 under 'About this report'

Note 2: Graph above shows top 15 countries only, the remaining countries are grouped under 'Other countries'.

# 1 Lodged

## 1.12 Number of second Working and Holiday (subclass 462) visa applications lodged in 2017-18 to 31 December 2017 by citizenship country - comparison with the previous four financial years



Citizenship Country	2016-17 to 31/12/16	2017-18 to 31/12/17	% Change from 2016-17	2017-18 as % of Total
China, Peoples Republic of (excl SARs)	< 5	739	73800.0%	34.7%
Indonesia	< 5	404		19.0%
Chile	< 5	280		13.2%
United States of America	< 5	280	27900.0%	13.2%
Argentina	< 5	97		4.6%
Spain	< 5	96		4.5%
Israel	< 5	51		2.4%
Thailand	< 5	51		2.4%
Poland	< 5	25		1.2%
Portugal	< 5	25	2400.0%	1.2%
Slovakia	< 5	17		0.8%
Malaysia	< 5	14		0.7%
Turkey	< 5	14		0.7%
Uruguay	< 5	9		0.4%
Bangladesh	< 5	8		0.4%
Slovenia	< 5	5		0.2%
Vietnam	na	<5	na	0.0%
Not Specified	< 5	12		0.6%
<b>Total</b>	<b>&lt;5</b>	<b>2,128</b>	<b>70833.3%</b>	<b>100.0%</b>

Note 1: Further information on statistical tables presented by citizenship country can be found on page 1 under 'About this report'

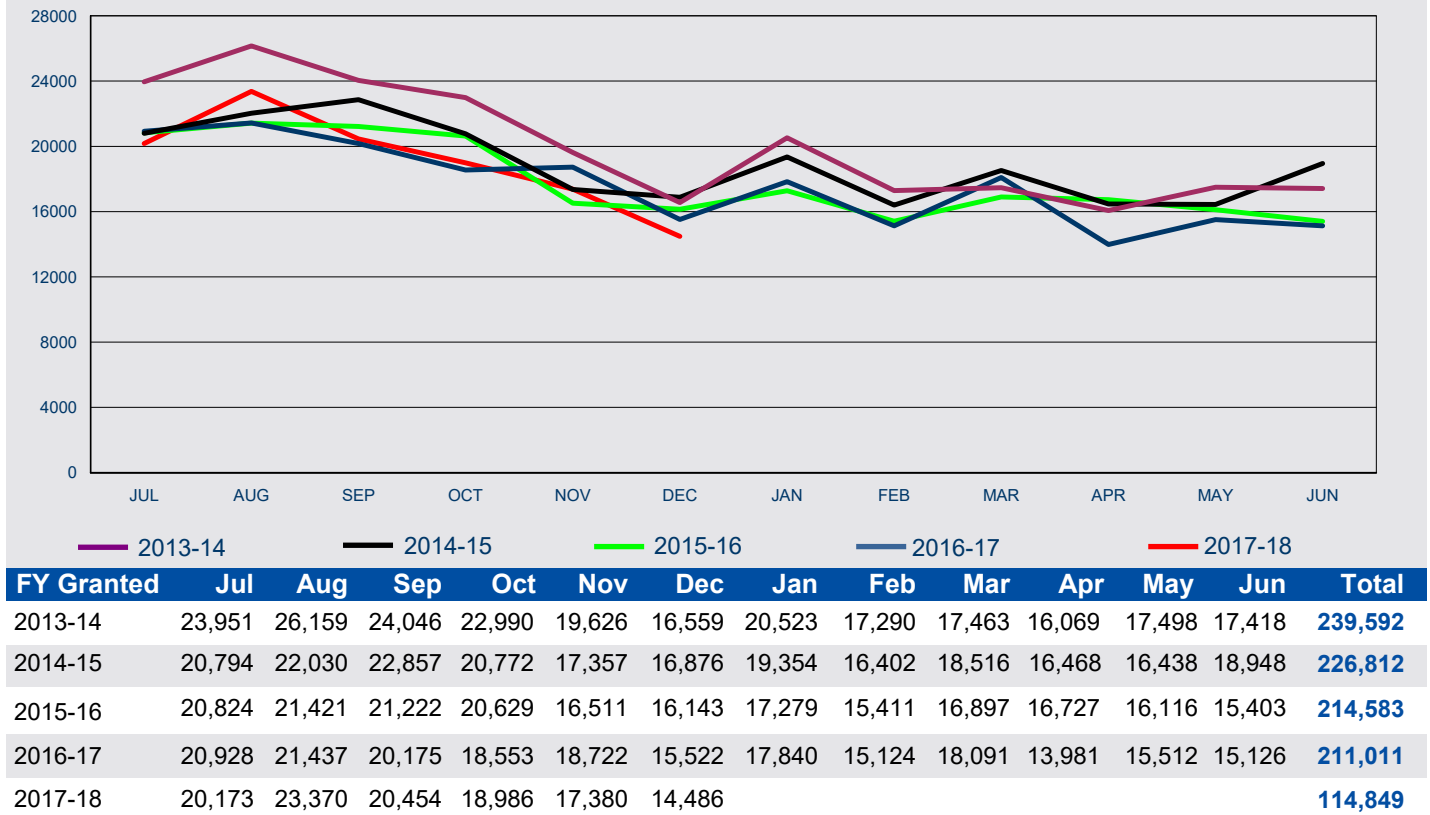
Note 2: Graph above shows top 15 countries only, the remaining countries are grouped under 'Other countries'.

This page is left intentionally blank.

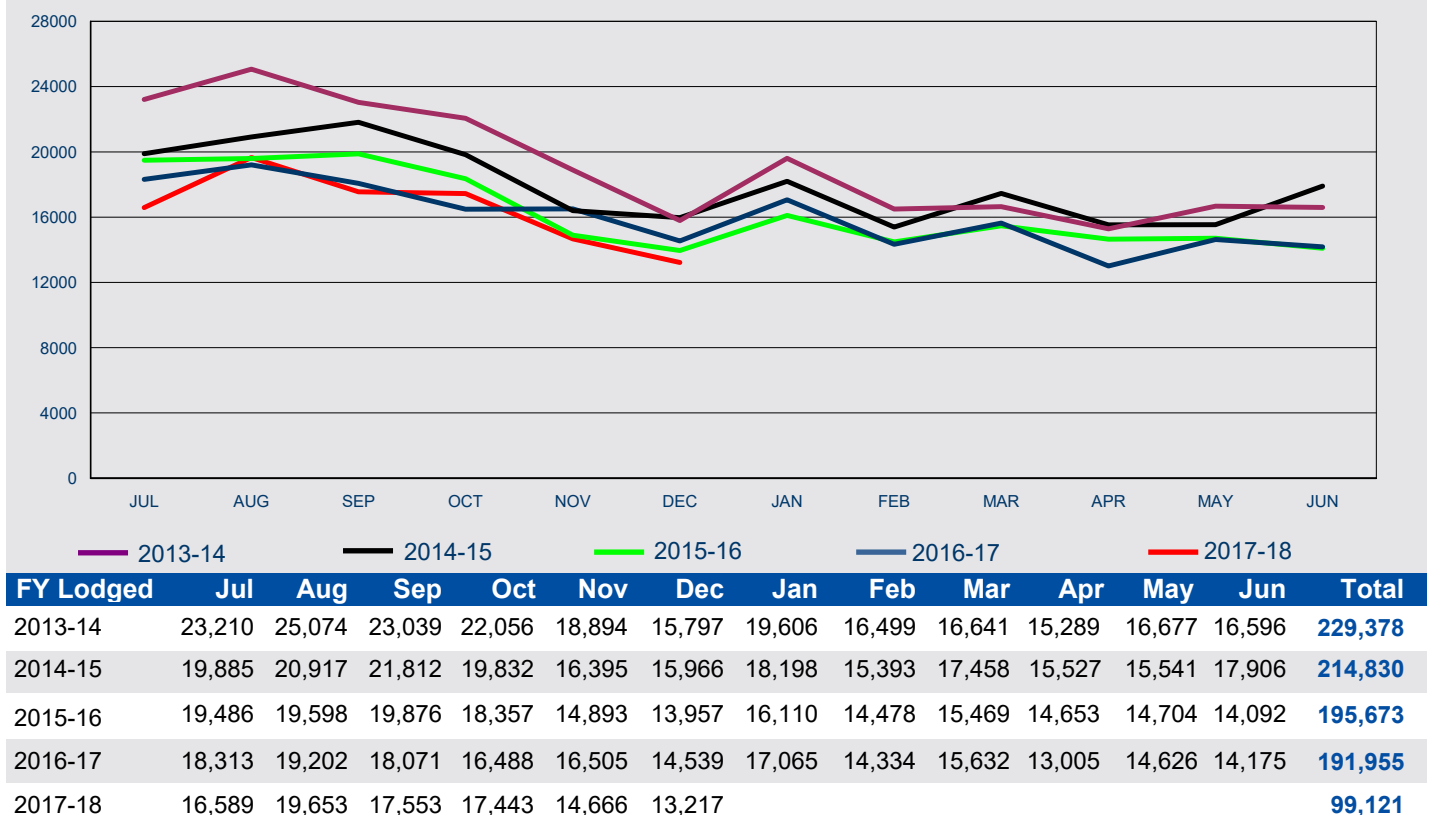
# 2 Granted

## 2 Granted

**2.01 Total number of Working Holiday Maker visa applications granted in 2017-18 to 31 December 2017 by month - comparison with previous four financial years**

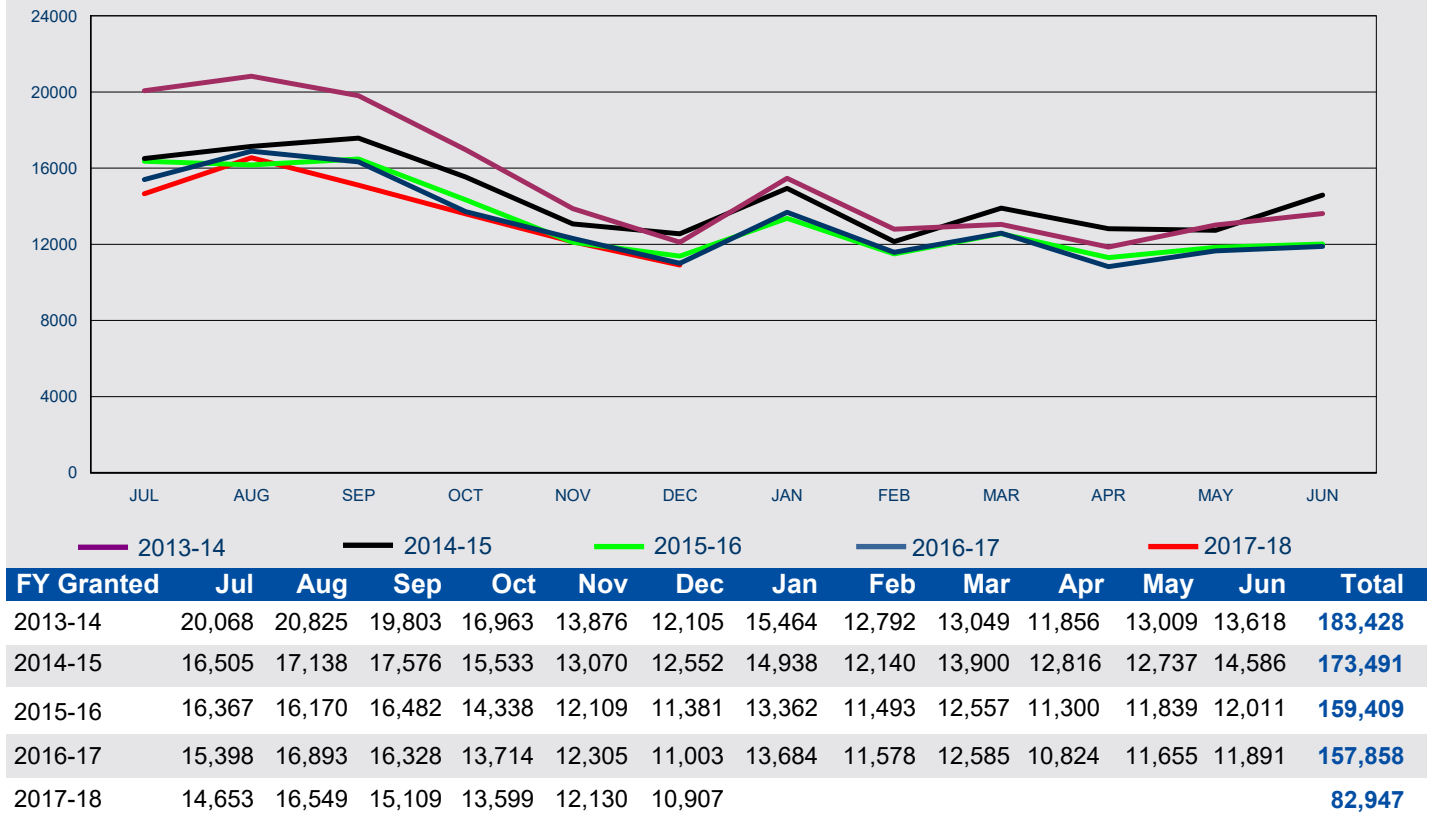


**2.02 Total number of Working Holiday (subclass 417) visa applications granted in 2017-18 to 31 December 2017 by month - comparison with previous four financial years**

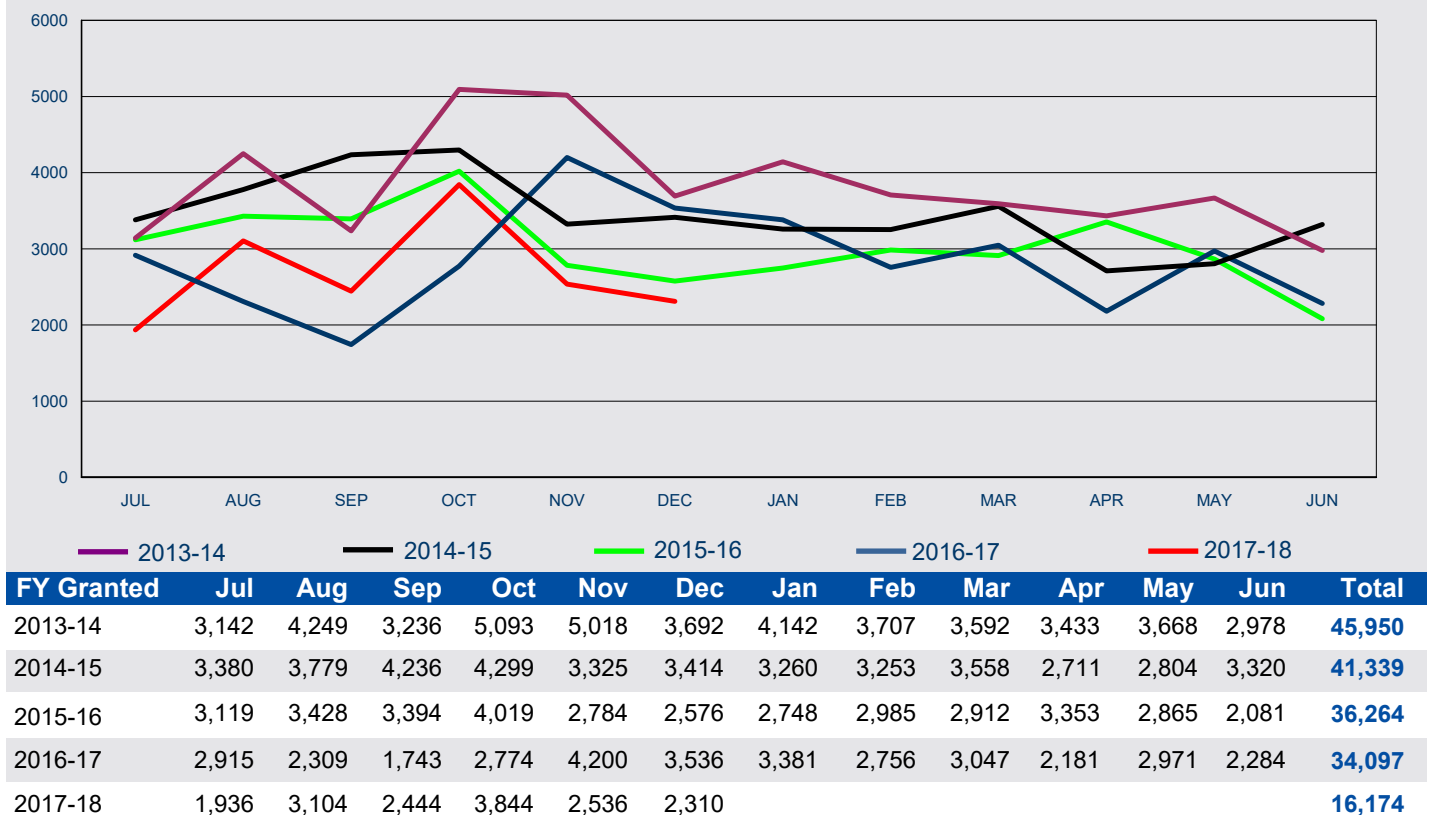


## 2 Granted

2.03 Number of first Working Holiday (subclass 417) visa applications granted in 2017-18 to 31 December 2017 by month - comparison with previous four financial years

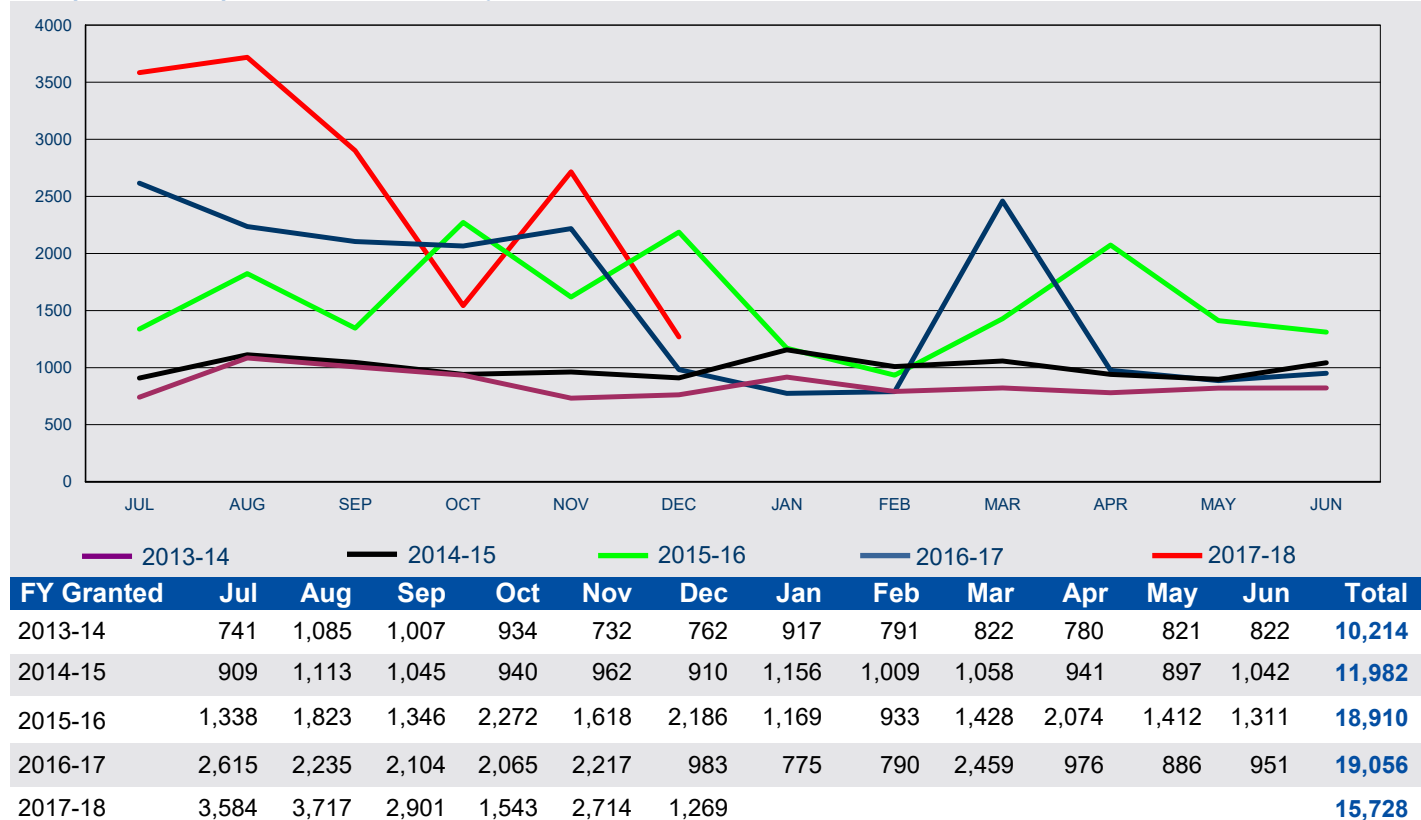


2.04 Number of second Working Holiday (subclass 417) visa applications granted in 2017-18 to 31 December 2017 by month - comparison with previous four financial years

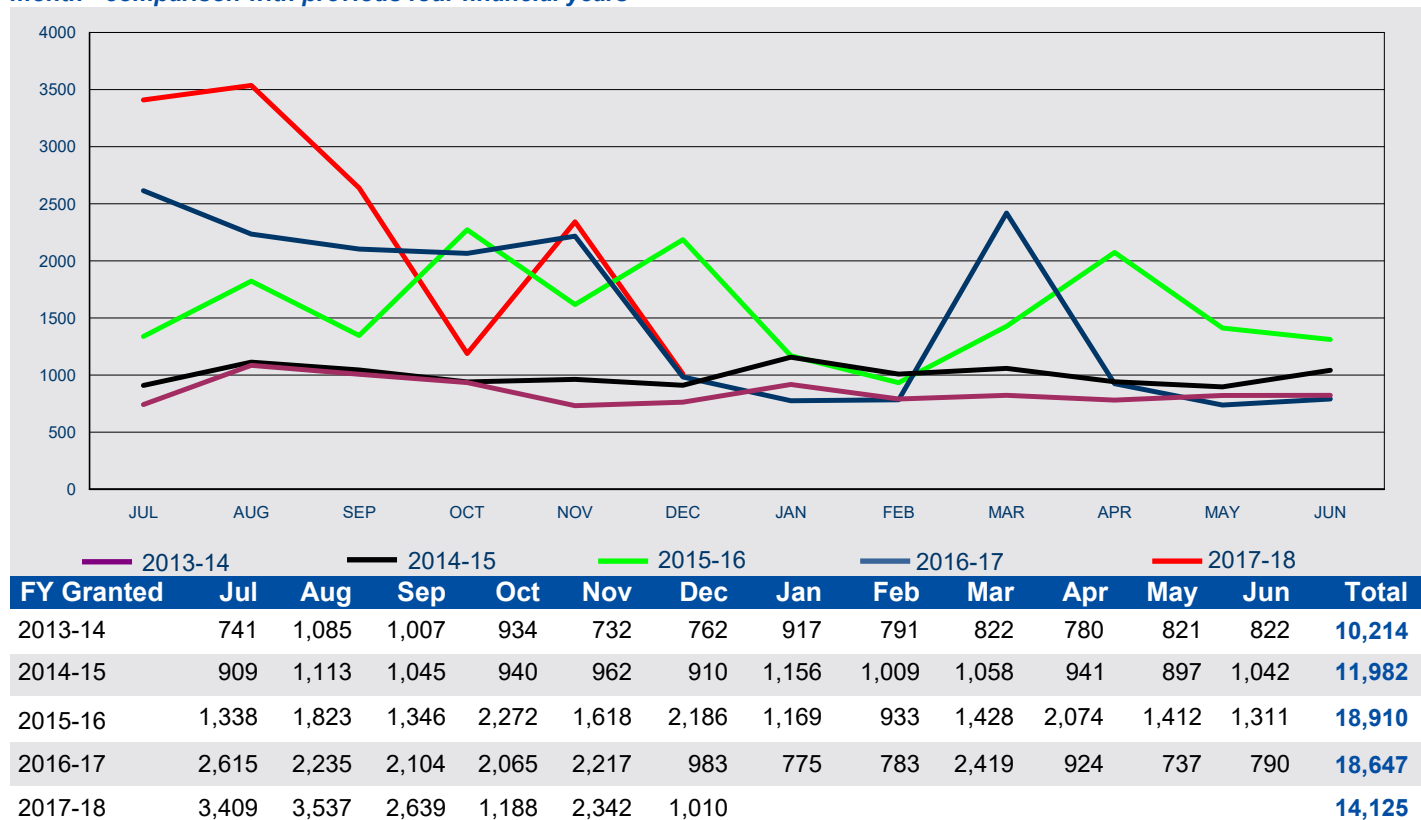


## 2 Granted

2.05 Total number of Work and Holiday (subclass 462) visa applications granted in 2017-18 to 31 December 2017 by month - comparison with previous four financial years



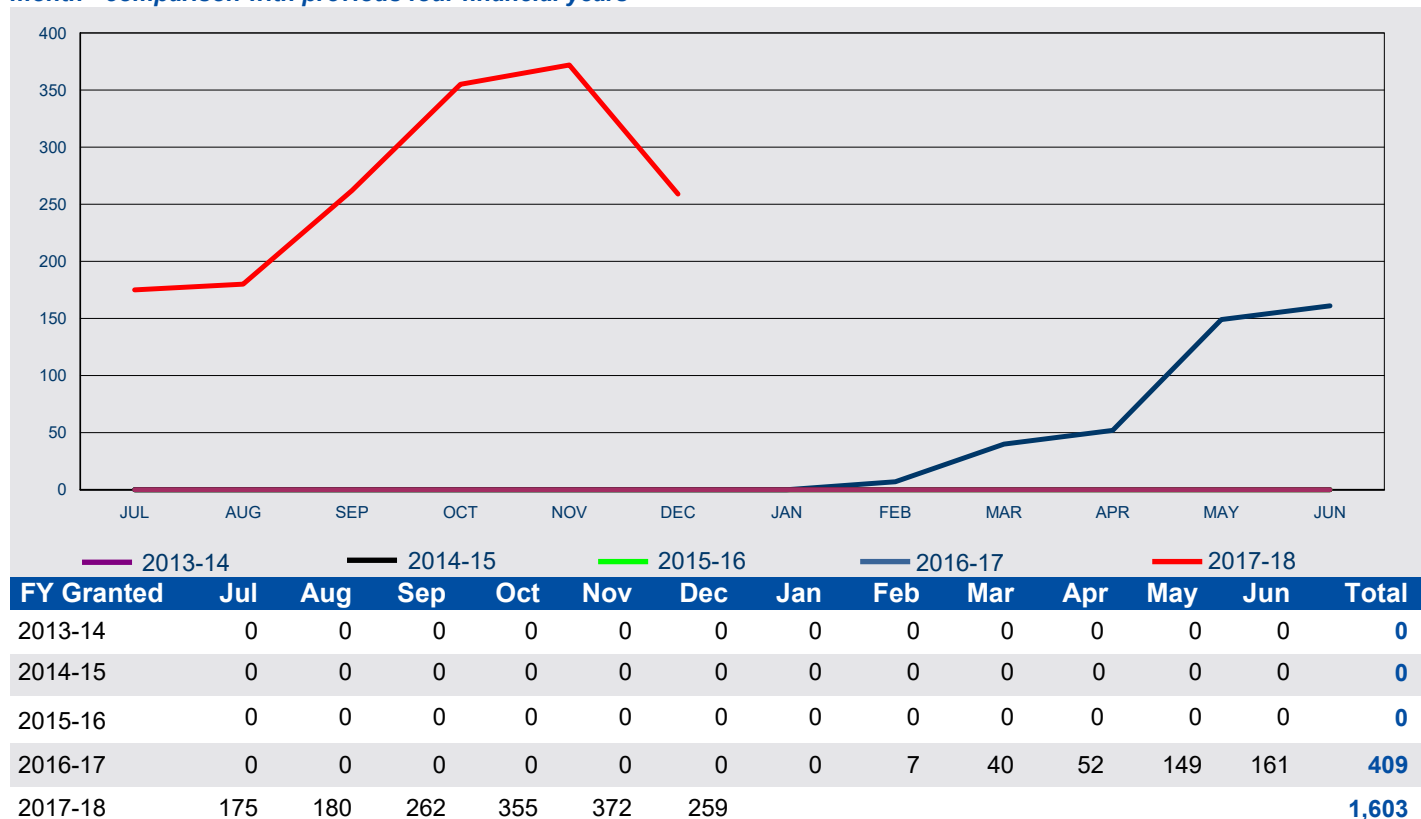
2.06 Number of first Working and Holiday (subclass 462) visa applications granted in 2017-18 to 31 December 2017 by month - comparison with previous four financial years





## 2 Granted

2.07 Number of second Working and Holiday (subclass 462) visa applications granted in 2017-18 to 31 December 2017 by month - comparison with previous four financial years



2.08 Total number of Working Holiday Maker visa applications granted in the 6 month period ending 31 December 2017 by visa subclass and visa type - comparison with previous four periods

Visa Subclass	01/07/15 to 31/12/15	01/01/16 to 30/06/16	01/07/16 to 31/12/16	01/01/17 to 30/06/17	01/07/17 to 31/12/17
<b>417 Working Holiday</b>					
First visa	86,847	72,562	85,641	72,217	82,947
Second visa	19,320	16,944	17,477	16,620	16,174
<b>All 417 Working Holiday</b>	<b>106,167</b>	<b>89,506</b>	<b>103,118</b>	<b>88,837</b>	<b>99,121</b>
<b>462 Work and Holiday</b>					
First visa	10,583	8,327	12,219	6,428	14,125
Second visa	0	0	0	409	1,603
<b>All 462 Work and Holiday</b>	<b>10,583</b>	<b>8,327</b>	<b>12,219</b>	<b>6,837</b>	<b>15,728</b>
<b>All Working Holiday Maker</b>	<b>116,750</b>	<b>97,833</b>	<b>115,337</b>	<b>95,674</b>	<b>114,849</b>

## 2 Granted

### 2.09 Total number of Working Holiday (subclass 417) visa applications granted in 2017-18 to 31 December 2017 by citizenship country - comparison with the previous four financial years

Citizenship Country	2013-14 to 31/12/13	2014-15 to 31/12/14	2015-16 to 31/12/15	2016-17 to 31/12/16	2017-18 to 31/12/17	% Change from 2016-17	2017-18 as a % of Total
United Kingdom	23,928	23,924	22,501	21,800	19,847	-9.0%	20.0%
Germany	15,940	15,217	15,141	15,694	14,493	-7.7%	14.6%
France	14,988	13,338	12,255	12,308	12,868	4.5%	13.0%
South Korea	14,907	12,160	11,139	10,968	10,797	-1.6%	10.9%
Taiwan	15,703	12,960	11,089	9,949	10,254	3.1%	10.3%
Italy	9,665	8,475	6,747	6,396	5,845	-8.6%	5.9%
Japan	4,859	4,938	5,633	5,097	5,088	-0.2%	5.1%
Ireland	6,660	4,074	3,380	3,897	4,368	12.1%	4.4%
Canada	4,173	4,232	4,333	4,084	4,066	-0.4%	4.1%
Netherlands	2,572	2,585	2,829	3,329	3,173	-4.7%	3.2%
Sweden	3,795	3,478	3,303	2,660	2,231	-16.1%	2.3%
Belgium	1,195	1,274	1,303	1,435	1,451	1.1%	1.5%
Hong Kong (SAR of the PRC)	5,837	4,681	3,158	2,118	1,227	-42.1%	1.2%
Estonia	1,441	1,063	962	990	1,102	11.3%	1.1%
Finland	925	1,036	988	1,016	916	-9.8%	0.9%
Denmark	1,042	947	1,000	973	900	-7.5%	0.9%
Norway	334	313	323	308	382	24.0%	0.4%
Malta	51	63	50	57	67	17.5%	0.1%
Cyprus	54	49	31	39	33	-15.4%	0.0%
Not Specified	< 5		< 5		13		0.0%
<b>Total</b>	<b>128,070</b>	<b>114,807</b>	<b>106,167</b>	<b>103,118</b>	<b>99,121</b>	<b>-3.9%</b>	<b>100.0%</b>

Note: Further information on statistical tables presented by citizenship country can be found on page 1 under 'About this report'

### 2.10 Number of first Working Holiday (subclass 417) visa applications granted in 2017-18 to 31 December 2017 by citizenship country - comparison with the previous four financial years

Citizenship Country	2013-14 to 31/12/13	2014-15 to 31/12/14	2015-16 to 31/12/15	2016-17 to 31/12/16	2017-18 to 31/12/17	% Change from 2016-17	2017-18 as a % of Total
United Kingdom	19,406	19,239	18,019	17,821	15,949	-10.5%	19.2%
Germany	15,008	14,218	14,114	14,776	13,505	-8.6%	16.3%
France	13,365	11,603	10,522	10,801	11,514	6.6%	13.9%
South Korea	11,917	9,560	9,106	9,049	8,940	-1.2%	10.8%
Taiwan	10,194	8,193	7,478	6,267	7,163	14.3%	8.6%
Italy	7,900	6,500	5,095	5,233	4,701	-10.2%	5.7%
Japan	3,855	3,953	4,526	4,030	4,233	5.0%	5.1%
Canada	3,802	3,810	3,900	3,654	3,623	-0.8%	4.4%
Ireland	3,584	2,584	2,500	3,048	3,379	10.9%	4.1%
Netherlands	2,344	2,305	2,545	3,035	2,861	-5.7%	3.4%
Sweden	3,542	3,133	3,002	2,372	2,010	-15.3%	2.4%
Belgium	1,110	1,144	1,150	1,287	1,314	2.1%	1.6%
Hong Kong (SAR of the PRC)	4,437	3,317	2,143	1,391	892	-35.9%	1.1%
Denmark	988	883	918	919	834	-9.2%	1.0%
Finland	840	933	845	912	792	-13.2%	1.0%
Estonia	938	621	611	670	774	15.5%	0.9%
Norway	318	292	309	287	367	27.9%	0.4%
Malta	43	55	38	53	57	7.5%	0.1%
Cyprus	48	31	24	36	29	-19.4%	0.0%
Not Specified	< 5	0	< 5	0	10	0	0.0%
<b>Total</b>	<b>103,640</b>	<b>92,374</b>	<b>86,847</b>	<b>85,641</b>	<b>82,947</b>	<b>-3.1%</b>	<b>100.0%</b>

Note: Further information on statistical tables presented by citizenship country can be found on page 1 under 'About this report'

## 2 Granted

### 2.11 Number of second Working Holiday (subclass 417) visa applications granted in 2017-18 to 31 December 2017 by citizenship country - comparison with the previous four financial years

Citizenship Country	2013-14 to 31/12/13	2014-15 to 31/12/14	2015-16 to 31/12/15	2016-17 to 31/12/16	2017-18 to 31/12/17	% Change from 2016-17	2017-18 as a % of Total
United Kingdom	4,522	4,685	4,482	3,979	3,898	-2.0%	24.1%
Taiwan	5,509	4,767	3,611	3,682	3,091	-16.1%	19.1%
South Korea	2,990	2,600	2,033	1,919	1,857	-3.2%	11.5%
France	1,623	1,735	1,733	1,507	1,354	-10.2%	8.4%
Italy	1,765	1,975	1,652	1,163	1,144	-1.6%	7.1%
Ireland	3,076	1,490	880	849	989	16.5%	6.1%
Germany	932	999	1,027	918	988	7.6%	6.1%
Japan	1,004	985	1,107	1,067	855	-19.9%	5.3%
Canada	371	422	433	430	443	3.0%	2.7%
Hong Kong (SAR of the PRC)	1,400	1,364	1,015	727	335	-53.9%	2.1%
Estonia	503	442	351	320	328	2.5%	2.0%
Netherlands	228	280	284	294	312	6.1%	1.9%
Sweden	253	345	301	288	221	-23.3%	1.4%
Belgium	85	130	153	148	137	-7.4%	0.8%
Finland	85	103	143	104	124	19.2%	0.8%
Denmark	54	64	82	54	66	22.2%	0.4%
Norway	16	21	14	21	15	-28.6%	0.1%
Malta	8	8	12	< 5	10	150.0%	0.1%
Cyprus	6	18	7	< 5	< 5	33.3%	0.0%
Not Specified	0	0	0	0	< 5	0	0.0%
<b>Total</b>	<b>24,430</b>	<b>22,433</b>	<b>19,320</b>	<b>17,477</b>	<b>16,174</b>	<b>-7.5%</b>	<b>100.0%</b>

Note: Further information on statistical tables presented by citizenship country can be found on page 1 under 'About this report'

### 2.12 Total number of Work and Holiday (subclass 462) visa applications granted in 2017-18 to 31 December 2017 by citizenship country - comparison with the previous four financial years

Citizenship Country	2013-14 to 31/12/13	2014-15 to 31/12/14	2015-16 to 31/12/15	2016-17 to 31/12/16	2017-18 to 31/12/17	% Change from 2016-17	2017-18 as a % of Total
United States of America	3,677	4,001	4,364	4,099	3,947	-3.7%	25.1%
China, Peoples Republic of (excl SARs)	na	na	2,866	2,911	3,662	25.8%	23.3%
Chile	458	538	864	1,501	2,226	48.3%	14.2%
Spain	na	< 5	504	596	1,514	154.0%	9.6%
Argentina	281	500	700	700	1,150	64.3%	7.3%
Indonesia	210	118	244	830	991	19.4%	6.3%
Israel	na	na	na	500	536	7.2%	3.4%
Thailand	411	371	500	394	435	10.4%	2.8%
Poland	na	130	200	200	299	49.5%	1.9%
Portugal	na	0	109	161	191	18.6%	1.2%
Singapore	na	na	na	na	180	na	1.1%
Malaysia	92	100	100	100	109	9.0%	0.7%
Uruguay	27	25	40	53	86	62.3%	0.5%
Turkey	97	91	91	99	82	-17.2%	0.5%
Slovakia	na	na	na	49	75	53.1%	0.5%
Hungary	na	na	na	na	64	na	0.4%
Vietnam	na	na	na	na	58	na	0.4%
Peru	na	na	na	na	50	na	0.3%
Slovenia	na	na	na	22	43	95.5%	0.3%
Luxembourg	na	na	na	na	6	na	0.0%
Bangladesh	8	0	< 5	< 5	5	25.0%	0.0%
Iran							0.0%
Not Specified	0	< 5	0	0	18	0	0.1%
<b>Total</b>	<b>5,261</b>	<b>5,879</b>	<b>10,583</b>	<b>12,219</b>	<b>15,728</b>	<b>28.7%</b>	<b>100.0%</b>

Note: Further information on statistical tables presented by citizenship country can be found on page 1 under 'About this report'

## 2 Granted

### 2.13 Number of first Working and Holiday (subclass 462) visa applications granted in 2017-18 to 31 December 2017 by citizenship country - comparison with the previous four financial years

Citizenship Country	2013-14 to 31/12/13	2014-15 to 31/12/14	2015-16 to 31/12/15	2016-17 to 31/12/16	2017-18 to 31/12/17	% Change from 2016-17	2017-18 as a % of Total
United States of America	3,677	4,001	4,364	4,099	3,724	-9.1%	26.4%
China, Peoples Republic of (excl SARs)	na	na	2,866	2,911	3,187	9.5%	22.6%
Chile	458	538	864	1,501	2,001	33.3%	14.2%
Spain	na	< 5	504	596	1,432	140.3%	10.1%
Argentina	281	500	700	700	1,063	51.9%	7.5%
Indonesia	210	118	244	830	661	-20.4%	4.7%
Israel	na	na	na	500	502	0.4%	3.6%
Thailand	411	371	500	394	391	-0.8%	2.8%
Poland	na	130	200	200	277	38.5%	2.0%
Singapore	na	na	na	na	180	na	1.3%
Portugal	na	0	109	161	169	5.0%	1.2%
Malaysia	92	100	100	100	98	-2.0%	0.7%
Uruguay	27	25	40	53	77	45.3%	0.5%
Turkey	97	91	91	99	72	-27.3%	0.5%
Hungary	na	na	na	na	64	na	0.5%
Slovakia	na	na	na	49	61	24.5%	0.4%
Vietnam	na	na	na	na	58	na	0.4%
Peru	na	na	na	na	50	na	0.4%
Slovenia	na	na	na	22	37	68.2%	0.3%
Luxembourg	na	na	na	na	6	na	0.0%
Iran							0.0%
Bangladesh	8	0	< 5	< 5	0	-100.0%	
Not Specified	0	< 5	0	0	14	0	0.1%
<b>Total</b>	<b>5,261</b>	<b>5,879</b>	<b>10,583</b>	<b>12,219</b>	<b>14,125</b>	<b>15.6%</b>	<b>100.0%</b>

Note: Further information on statistical tables presented by citizenship country can be found on page 1 under 'About this report'

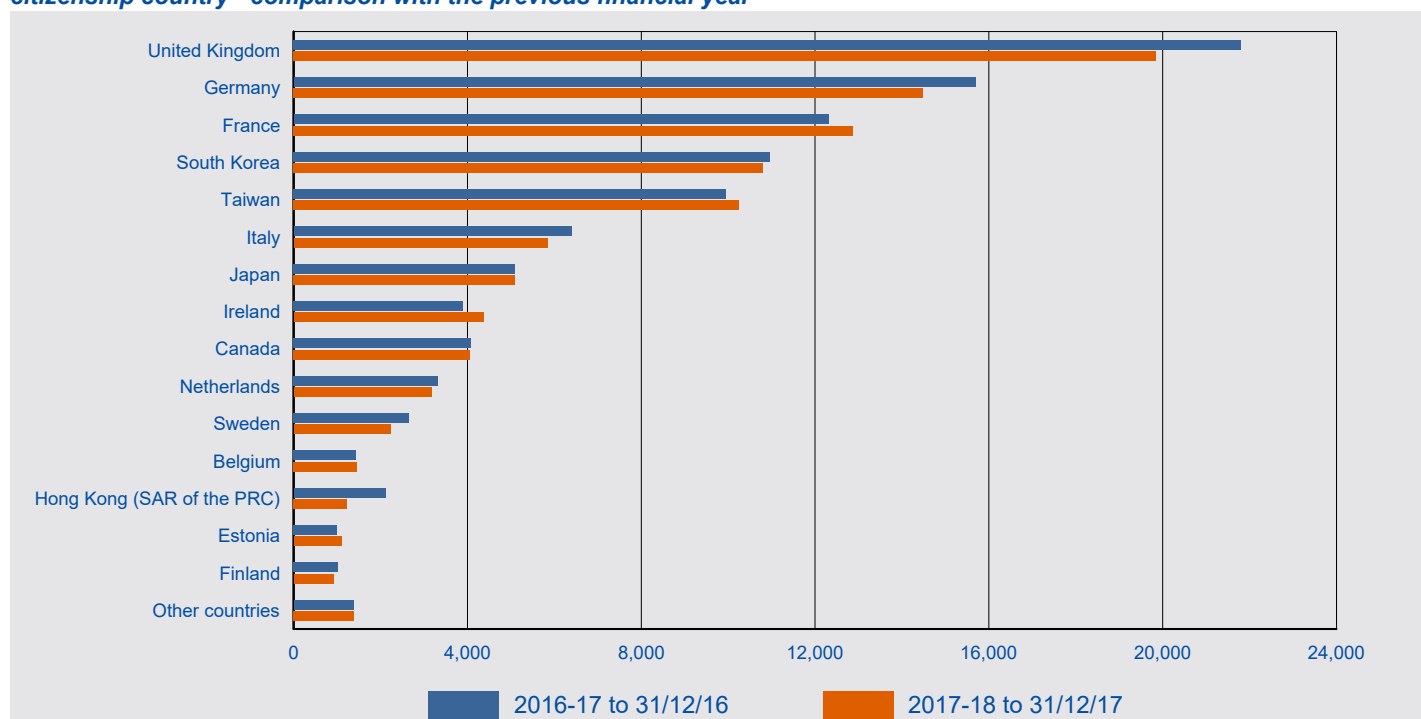
### 2.14 Number of second Working and Holiday (subclass 462) visa applications granted in 2017-18 to 31 December 2017 by citizenship country - comparison with the previous four financial years

Citizenship Country	2013-14 to 31/12/13	2014-15 to 31/12/14	2015-16 to 31/12/15	2016-17 to 31/12/16	2017-18 to 31/12/17	% Change from 2016-17	2017-18 as a % of Total
China, Peoples Republic of (excl SARs)	na	na	0	0	475	0	29.6%
Indonesia	0	0	0	0	330	0	20.6%
Chile	0	0	0	0	225	0	14.0%
United States of America	0	0	0	0	223	0	13.9%
Argentina	0	0	0	0	87	0	5.4%
Spain	na	0	0	0	82	0	5.1%
Thailand	0	0	0	0	44	0	2.7%
Israel	na	na	na	0	34	0	2.1%
Poland	na	0	0	0	22	0	1.4%
Portugal	na	0	0	0	22	0	1.4%
Slovakia	na	na	na	0	14	0	0.9%
Malaysia	0	0	0	0	11	0	0.7%
Turkey	0	0	0	0	10	0	0.6%
Uruguay	0	0	0	0	9	0	0.6%
Slovenia	na	na	na	0	6	0	0.4%
Bangladesh	0	0	0	0	5	0	0.3%
Not Specified	0	0	0	0	< 5	0	0.2%
<b>Total</b>					<b>1,603</b>		<b>100.0%</b>

Note: Further information on statistical tables presented by citizenship country can be found on page 1 under 'About this report'

## 2 Granted

### 2.15 Total number of Working Holiday (subclass 417) visa applications granted in 2017-18 to 31 December 2017 by citizenship country - comparison with the previous financial year



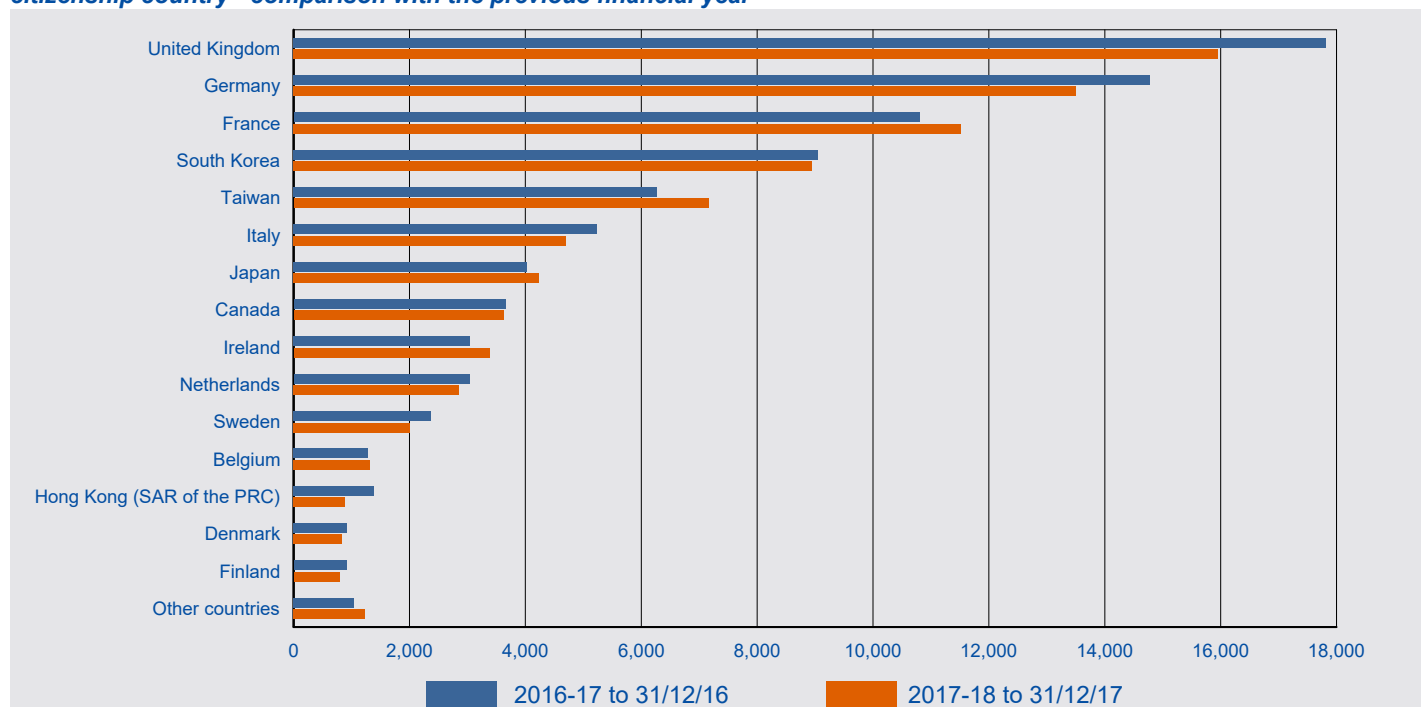
Citizenship Country	2016-17 to 31/12/16	2017-18 to 31/12/17	% Change from 2016-17	2017-18 as % of Total
United Kingdom	21,800	19,847	-9.0%	20.0%
Germany	15,694	14,493	-7.7%	14.6%
France	12,308	12,868	4.5%	13.0%
South Korea	10,968	10,797	-1.6%	10.9%
Taiwan	9,949	10,254	3.1%	10.3%
Italy	6,396	5,845	-8.6%	5.9%
Japan	5,097	5,088	-0.2%	5.1%
Ireland	3,897	4,368	12.1%	4.4%
Canada	4,084	4,066	-0.4%	4.1%
Netherlands	3,329	3,173	-4.7%	3.2%
Sweden	2,660	2,231	-16.1%	2.3%
Belgium	1,435	1,451	1.1%	1.5%
Hong Kong (SAR of the PRC)	2,118	1,227	-42.1%	1.2%
Estonia	990	1,102	11.3%	1.1%
Finland	1,016	916	-9.8%	0.9%
Denmark	973	900	-7.5%	0.9%
Norway	308	382	24.0%	0.4%
Malta	57	67	17.5%	0.1%
Cyprus	39	33	-15.4%	0.0%
Not Specified		13		0.0%
<b>Total</b>	<b>103,118</b>	<b>99,121</b>	<b>-3.9%</b>	<b>100.0%</b>

Note 1: Further information on statistical tables presented by citizenship country can be found on page 1 under 'About this report'

Note 2: Graph above shows top 15 countries only, the remaining countries are grouped under 'Other countries'.

## 2 Granted

### 2.16 Number of first Working Holiday (subclass 417) visa applications granted in 2017-18 to 31 December 2017 by citizenship country - comparison with the previous financial year



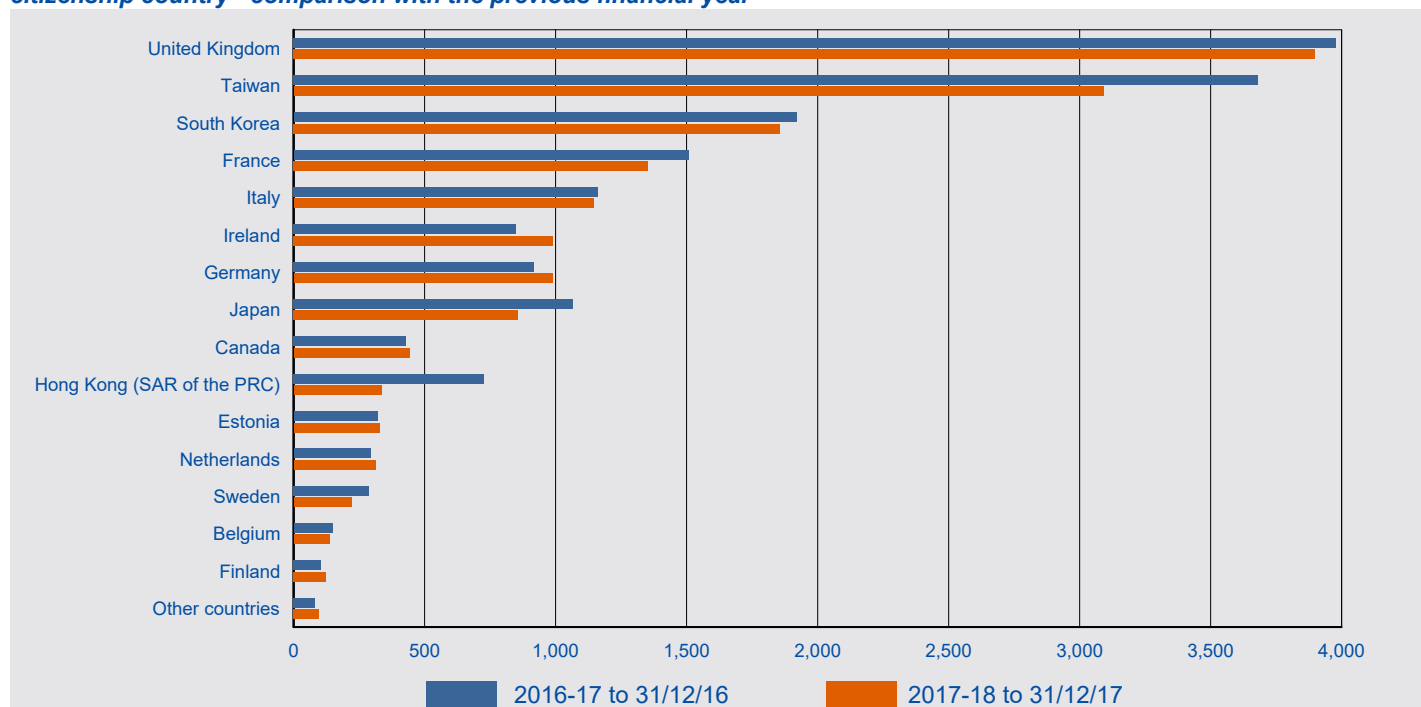
Citizenship Country	2016-17 to 31/12/16	2017-18 to 31/12/17	% Change from 2016-17	2017-18 as % of Total
United Kingdom	17,821	15,949	-10.5%	19.2%
Germany	14,776	13,505	-8.6%	16.3%
France	10,801	11,514	6.6%	13.9%
South Korea	9,049	8,940	-1.2%	10.8%
Taiwan	6,267	7,163	14.3%	8.6%
Italy	5,233	4,701	-10.2%	5.7%
Japan	4,030	4,233	5.0%	5.1%
Canada	3,654	3,623	-0.8%	4.4%
Ireland	3,048	3,379	10.9%	4.1%
Netherlands	3,035	2,861	-5.7%	3.4%
Sweden	2,372	2,010	-15.3%	2.4%
Belgium	1,287	1,314	2.1%	1.6%
Hong Kong (SAR of the PRC)	1,391	892	-35.9%	1.1%
Denmark	919	834	-9.2%	1.0%
Finland	912	792	-13.2%	1.0%
Estonia	670	774	15.5%	0.9%
Norway	287	367	27.9%	0.4%
Malta	53	57	7.5%	0.1%
Cyprus	36	29	-19.4%	0.0%
Not Specified		10		0.0%
<b>Total</b>	<b>85,641</b>	<b>82,947</b>	<b>-3.1%</b>	<b>100.0%</b>

Note 1: Further information on statistical tables presented by citizenship country can be found on page 1 under 'About this report'

Note 2: Graph above shows top 15 countries only, the remaining countries are grouped under 'Other countries'.

## 2 Granted

### 2.17 Number of second Working Holiday (subclass 417) visa applications granted in 2017-18 to 31 December 2017 by citizenship country - comparison with the previous financial year



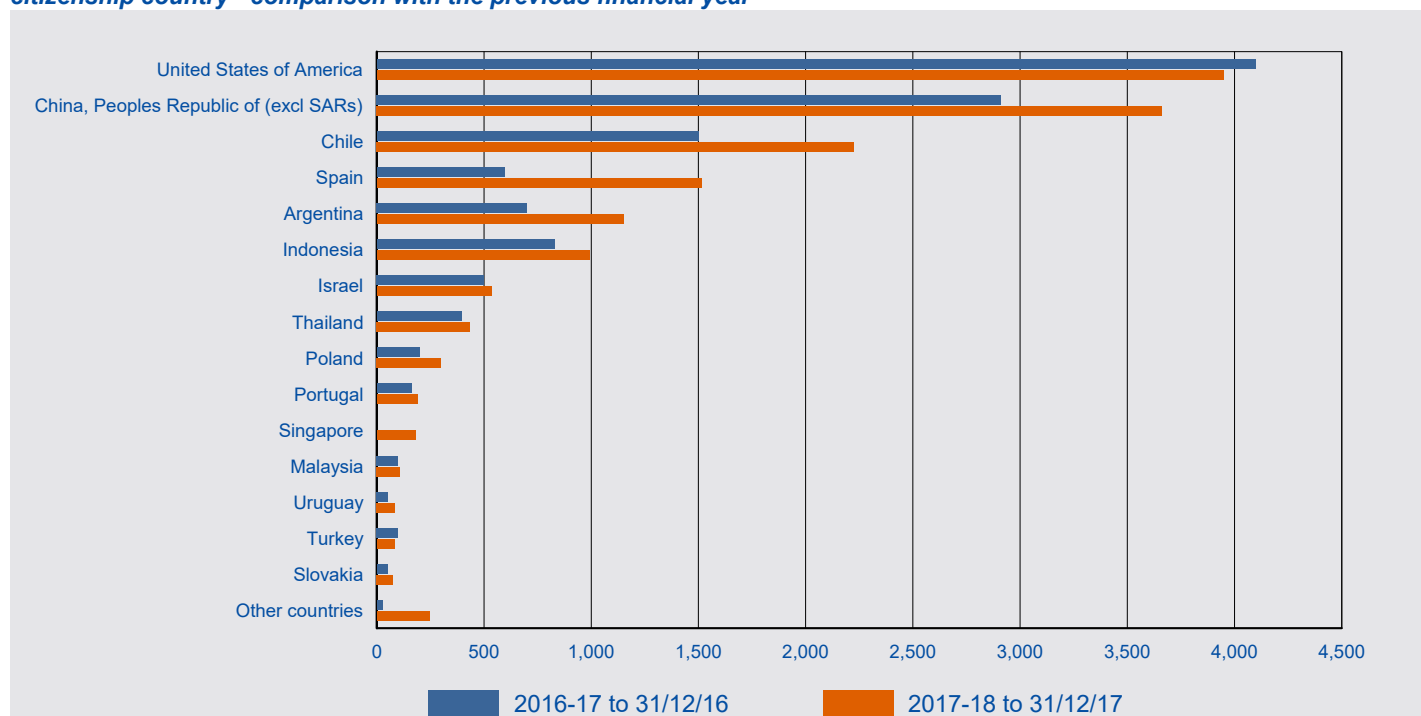
Citizenship Country	2016-17 to 31/12/16	2017-18 to 31/12/17	% Change from 2016-17	2017-18 as % of Total
United Kingdom	3,979	3,898	-2.0%	24.1%
Taiwan	3,682	3,091	-16.1%	19.1%
South Korea	1,919	1,857	-3.2%	11.5%
France	1,507	1,354	-10.2%	8.4%
Italy	1,163	1,144	-1.6%	7.1%
Ireland	849	989	16.5%	6.1%
Germany	918	988	7.6%	6.1%
Japan	1,067	855	-19.9%	5.3%
Canada	430	443	3.0%	2.7%
Hong Kong (SAR of the PRC)	727	335	-53.9%	2.1%
Estonia	320	328	2.5%	2.0%
Netherlands	294	312	6.1%	1.9%
Sweden	288	221	-23.3%	1.4%
Belgium	148	137	-7.4%	0.8%
Finland	104	124	19.2%	0.8%
Denmark	54	66	22.2%	0.4%
Norway	21	15	-28.6%	0.1%
Malta	< 5	10	150.0%	0.1%
Cyprus	< 5	< 5	33.3%	0.0%
Not Specified		< 5		0.0%
<b>Total</b>	<b>17,477</b>	<b>16,174</b>	<b>-7.5%</b>	<b>100.0%</b>

Note 1: Further information on statistical tables presented by citizenship country can be found on page 1 under 'About this report'

Note 2: Graph above shows top 15 countries only, the remaining countries are grouped under 'Other countries'.

## 2 Granted

### 2.18 Total number of Working Holiday (subclass 462) visa applications granted in 2017-18 to 31 December 2017 by citizenship country - comparison with the previous financial year



Citizenship Country	2016-17 to 31/12/16	2017-18 to 31/12/17	% Change from 2016-17	2017-18 as % of Total
United States of America	4,099	3,947	-3.7%	25.1%
China, Peoples Republic of (excl SARs)	2,911	3,662	25.8%	23.3%
Chile	1,501	2,226	48.3%	14.2%
Spain	596	1,514	154.0%	9.6%
Argentina	700	1,150	64.3%	7.3%
Indonesia	830	991	19.4%	6.3%
Israel	500	536	7.2%	3.4%
Thailand	394	435	10.4%	2.8%
Poland	200	299	49.5%	1.9%
Portugal	161	191	18.6%	1.2%
Singapore	na	180	na	1.1%
Malaysia	100	109	9.0%	0.7%
Uruguay	53	86	62.3%	0.5%
Turkey	99	82	-17.2%	0.5%
Slovakia	49	75	53.1%	0.5%
Hungary	na	64	na	0.4%
Vietnam	na	58	na	0.4%
Peru	na	50	na	0.3%
Slovenia	22	43	95.5%	0.3%
Not Specified	0	18	0	0.1%
Luxembourg	na	6	na	0.0%
Bangladesh	< 5	5	25.0%	0.0%
Iran		< 5		0.0%
<b>Total</b>	<b>12,219</b>	<b>15,728</b>	<b>28.7%</b>	<b>100.0%</b>

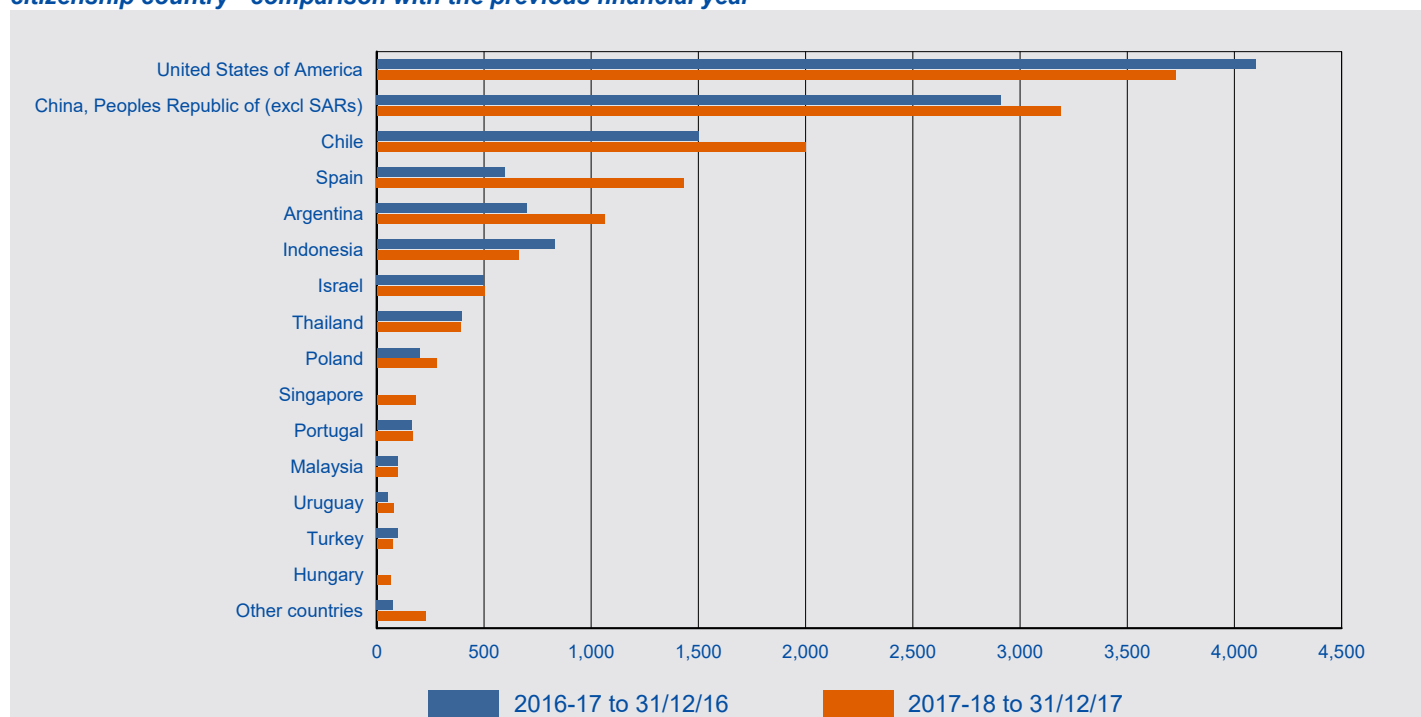
Note 1: Further information on statistical tables presented by citizenship country can be found on page 1 under 'About this report'

Note 2: Graph above shows top 15 countries only, the remaining countries are grouped under 'Other countries'.



## 2 Granted

### 2.19 Number of first Working and Holiday (subclass 462) visa applications granted in 2017-18 to 31 December 2017 by citizenship country - comparison with the previous financial year



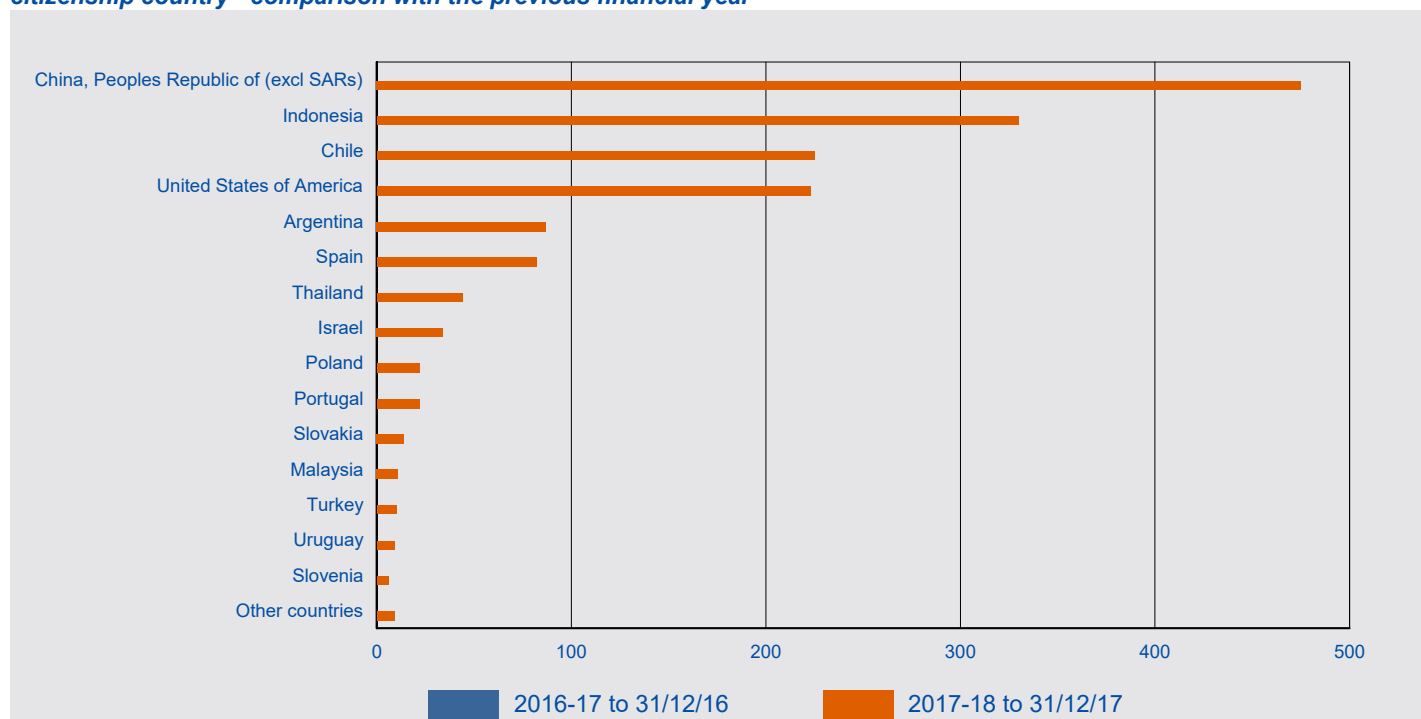
Citizenship Country	2016-17 to 31/12/16	2017-18 to 31/12/17	% Change from 2016-17	2017-18 as % of Total
United States of America	4,099	3,724	-9.1%	26.4%
China, Peoples Republic of (excl SARs)	2,911	3,187	9.5%	22.6%
Chile	1,501	2,001	33.3%	14.2%
Spain	596	1,432	140.3%	10.1%
Argentina	700	1,063	51.9%	7.5%
Indonesia	830	661	-20.4%	4.7%
Israel	500	502	0.4%	3.6%
Thailand	394	391	-0.8%	2.8%
Poland	200	277	38.5%	2.0%
Singapore	na	180	na	1.3%
Portugal	161	169	5.0%	1.2%
Malaysia	100	98	-2.0%	0.7%
Uruguay	53	77	45.3%	0.5%
Turkey	99	72	-27.3%	0.5%
Hungary	na	64	na	0.5%
Slovakia	49	61	24.5%	0.4%
Vietnam	na	58	na	0.4%
Peru	na	50	na	0.4%
Slovenia	22	37	68.2%	0.3%
Luxembourg	na	6	na	0.0%
Iran		< 5		0.0%
Bangladesh	< 5		-100.0%	
Not Specified	0	14	0	0.1%
<b>Total</b>	<b>12,219</b>	<b>14,125</b>	<b>15.6%</b>	<b>100.0%</b>

Note 1: Further information on statistical tables presented by citizenship country can be found on page 1 under 'About this report'

Note 2: Graph above shows top 15 countries only, the remaining countries are grouped under 'Other countries'.

## 2 Granted

### 2.20 Number of second Working and Holiday (subclass 462) visa applications granted in 2017-18 to 31 December 2017 by citizenship country - comparison with the previous financial year



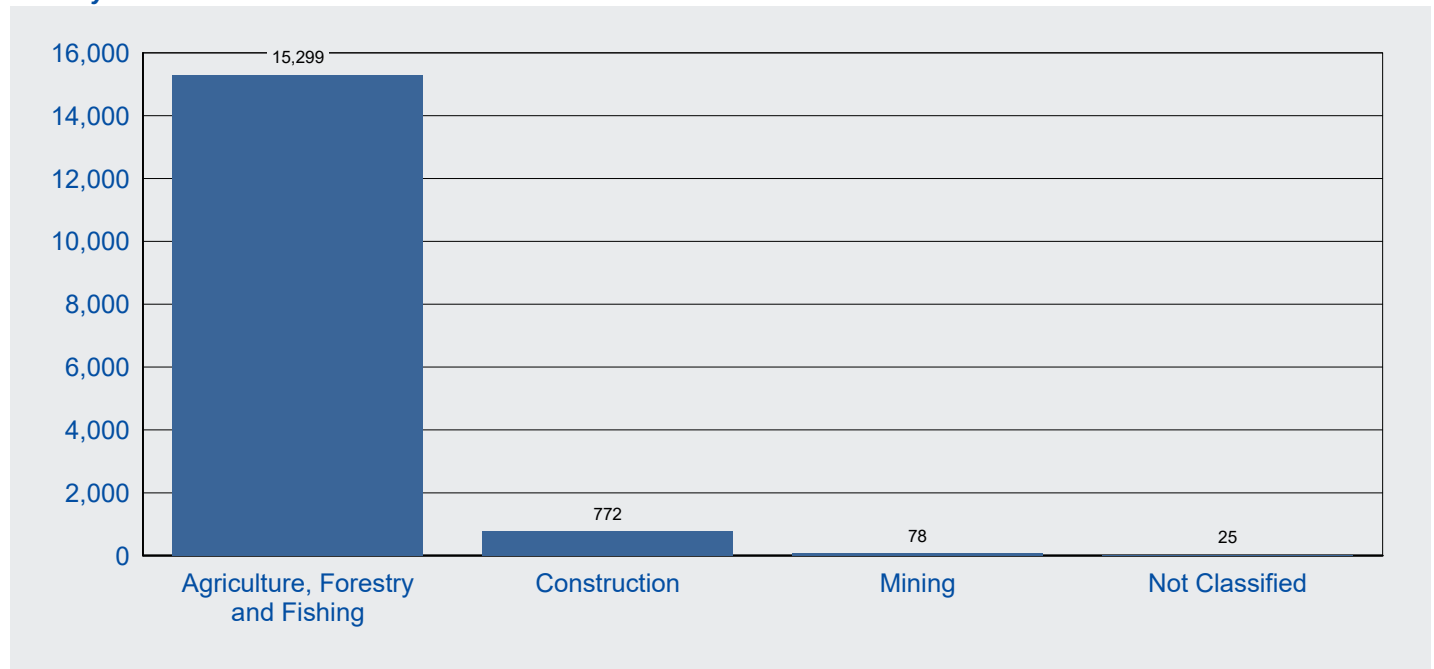
Citizenship Country	2016-17 to 31/12/16	2017-18 to 31/12/17	% Change from 2016-17	2017-18 as % of Total
China, Peoples Republic of (excl SARs)	0	475	0	29.6%
Indonesia	0	330	0	20.6%
Chile	0	225	0	14.0%
United States of America	0	223	0	13.9%
Argentina	0	87	0	5.4%
Spain	0	82	0	5.1%
Thailand	0	44	0	2.7%
Israel	0	34	0	2.1%
Poland	0	22	0	1.4%
Portugal	0	22	0	1.4%
Slovakia	0	14	0	0.9%
Malaysia	0	11	0	0.7%
Turkey	0	10	0	0.6%
Uruguay	0	9	0	0.6%
Slovenia	0	6	0	0.4%
Bangladesh	0	5	0	0.3%
Not Specified	0	< 5	0	0.2%
<b>Total</b>		<b>1,603</b>		<b>100.0%</b>

Note 1: Further information on statistical tables presented by citizenship country can be found on page 1 under 'About this report'

Note 2: Graph above shows top 15 countries only, the remaining countries are grouped under 'Other countries'.

## 2 Granted

2.21 Second Working Holiday (subclass 417) visa applications granted in 2017-18 to 31 December 2017 by employer industry



This page is left intentionally blank.

# 3 Grant Rate

For this section, grant rates have been shown.

A grant rate is defined as:

$$\frac{\text{Number of grants}}{\text{Number of decisions}} \times 100$$

where the number of decisions equals the number of grants plus the number of refusals.

## 3 Grant rate

3.01 Grant rate of Working Holiday Maker visa applications decided in the 6 month period ending 31 December 2017 by visa type and visa subclass - comparison with previous four periods

Visa Subclass	01/07/15 to 31/12/15	01/01/16 to 30/06/16	01/07/16 to 31/12/16	01/01/17 to 30/06/17	01/07/17 to 31/12/17
<b>417 Working Holiday</b>					
First visa	99.2%	99.3%	99.3%	98.5%	99.3%
Second visa	97.3%	96.3%	96.5%	95.7%	97.5%
<b>All 417 Working Holiday</b>	<b>98.9%</b>	<b>98.7%</b>	<b>98.8%</b>	<b>98.0%</b>	<b>99.0%</b>
<b>462 Work and Holiday</b>					
First visa	98.6%	98.4%	97.8%	98.4%	97.4%
Second visa	na	na	0.0%	90.7%	96.8%
<b>All 462 Work and Holiday</b>	<b>98.6%</b>	<b>98.4%</b>	<b>97.8%</b>	<b>97.9%</b>	<b>97.4%</b>
<b>All Working Holiday Maker</b>	<b>98.8%</b>	<b>98.7%</b>	<b>98.7%</b>	<b>98.0%</b>	<b>98.8%</b>

## 3 Grant rate

### 3.02 Grant rate for Working Holiday (subclass 417) visa applications decided in the 6 month period ending 31 December 2017 by citizenship country - comparison with previous four periods

Citizenship Country	01/07/15 to 31/12/15	01/01/16 to 30/06/16	01/07/16 to 31/12/16	01/01/17 to 30/06/17	01/07/17 to 31/12/17
<b>subclass 417 first visa</b>					
United Kingdom	99.3%	99.2%	99.0%	98.6%	99.4%
Germany	99.8%	99.8%	100.0%	99.5%	99.8%
France	99.6%	99.7%	99.8%	99.3%	99.7%
South Korea	98.1%	98.7%	97.9%	96.9%	98.4%
Taiwan	98.6%	98.6%	98.5%	97.6%	98.0%
Italy	99.6%	99.4%	99.8%	99.1%	99.8%
Japan	99.7%	99.7%	99.8%	99.4%	99.8%
Canada	99.7%	99.5%	99.6%	99.1%	99.3%
Ireland	99.6%	99.6%	99.6%	99.5%	99.6%
Netherlands	99.7%	99.7%	99.8%	99.4%	99.8%
Sweden	99.7%	99.7%	99.5%	97.9%	99.6%
Belgium	99.5%	99.6%	99.9%	99.8%	99.5%
Hong Kong (SAR of the PRC)	94.3%	97.0%	95.3%	93.3%	95.3%
Denmark	99.8%	99.8%	99.7%	98.3%	99.6%
Finland	99.9%	99.4%	100.0%	99.8%	99.9%
Estonia	98.7%	99.0%	99.7%	99.2%	99.5%
Norway	99.7%	99.0%	98.6%	98.6%	98.9%
Malta	100.0%	100.0%	100.0%	100.0%	100.0%
Cyprus	96.0%	100.0%	100.0%	100.0%	100.0%
Not Specified	66.7%	50.0%	0.00%	40.0%	45.5%
<b>All subclass 417 first visa</b>	<b>99.2%</b>	<b>99.3%</b>	<b>99.3%</b>	<b>98.5%</b>	<b>99.3%</b>
<b>subclass 417 second visa</b>					
United Kingdom	97.4%	96.4%	96.6%	96.0%	98.1%
Taiwan	97.8%	97.1%	96.9%	96.2%	97.5%
South Korea	97.2%	95.9%	96.0%	95.0%	96.0%
France	96.4%	93.8%	96.4%	94.3%	97.3%
Italy	98.0%	97.7%	96.7%	96.5%	98.8%
Germany	97.4%	95.1%	95.2%	94.0%	97.2%
Ireland	96.2%	96.2%	97.6%	97.2%	98.7%
Japan	97.3%	98.0%	97.2%	95.7%	98.2%
Canada	97.3%	95.2%	96.4%	95.0%	97.4%
Hong Kong (SAR of the PRC)	96.6%	96.6%	94.5%	94.5%	97.1%
Estonia	96.7%	95.0%	97.6%	97.8%	98.2%
Netherlands	97.9%	94.5%	96.1%	96.0%	97.5%
Sweden	98.4%	93.3%	98.3%	94.5%	98.7%
Belgium	98.1%	96.2%	97.4%	96.8%	96.5%
Finland	99.3%	92.9%	95.4%	95.7%	99.2%
Denmark	97.6%	92.7%	90.0%	93.5%	93.0%
Norway	93.3%	100.0%	100.0%	94.4%	100.0%
Malta	100.0%	100.0%	100.0%	100.0%	90.9%
Cyprus	70.0%	100.0%	60.0%	100.0%	100.0%
Not Specified	00.0%	00.0%	0.00%	00.0%	18.8%
<b>All subclass 417 second visa</b>	<b>97.3%</b>	<b>96.3%</b>	<b>96.5%</b>	<b>95.7%</b>	<b>97.5%</b>
<b>All 417 Working Holiday</b>	<b>98.9%</b>	<b>98.7%</b>	<b>98.8%</b>	<b>98.0%</b>	<b>99.0%</b>

Note: Further information on statistical tables presented by citizenship country can be found on page 1 under 'About this report'

## 3 Grant rate

### 3.03 Grant rate for Work and Holiday (subclass 462) visa applications decided in the 6 month period ending 31 December 2017 by citizenship country - comparison with previous four periods

Citizenship Country	01/07/15 to 31/12/15	01/01/16 to 30/06/16	01/07/16 to 31/12/16	01/01/17 to 30/06/17	01/07/17 to 31/12/17
<b>subclass 462 first visa</b>					
United States of America	99.1%	99.2%	98.8%	98.8%	99.1%
China, Peoples Republic of (excl SARs)	99.0%	98.0%	98.1%	99.2%	98.2%
Chile	99.8%	99.7%	98.9%	00.0%	95.7%
Spain	97.7%	00.0%	98.0%	0.00%	99.5%
Argentina	96.6%	0.00%	96.6%	0.00%	98.0%
Indonesia	98.8%	99.4%	99.5%	93.4%	97.9%
Israel	na	95.7%	92.3%	00.0%	96.9%
Thailand	97.7%	0.00%	96.8%	85.0%	91.8%
Poland	94.8%	0.00%	95.2%	00.0%	99.3%
Singapore	na	na	na	na	99.4%
Portugal	92.4%	94.8%	98.2%	95.0%	99.4%
Malaysia	100.0%	0.00%	96.2%	0.00%	98.0%
Bangladesh	10.0%	36.8%	09.3%	0.00%	00.0%
Uruguay	100.0%	100.0%	100.0%	99.0%	100.0%
Turkey	96.8%	100.0%	100.0%	100.0%	97.3%
Hungary	na	na	na	100.0%	100.0%
Slovakia	na	100.0%	98.0%	99.0%	100.0%
Vietnam	na	na	na	97.7%	96.7%
Peru	na	na	na	100.0%	100.0%
Slovenia	na	97.4%	100.0%	100.0%	97.4%
Luxembourg	na	na	na	100.0%	75.0%
Iran					
San Marino	na	na	na	100.0%	0.00%
Not Specified	0.00%	00.0%	0.00%	85.7%	70.0%
<b>All subclass 462 first visa</b>	<b>98.6%</b>	<b>98.4%</b>	<b>97.8%</b>	<b>98.4%</b>	<b>97.4%</b>
<b>subclass 462 second visa</b>					
China, Peoples Republic of (excl SARs)	na	na	00.0%	93.1%	96.5%
Indonesia	na	na	0.00%	98.1%	99.1%
United States of America	na	na	0.00%	81.0%	93.3%
Chile	na	na	0.00%	84.9%	95.7%
Argentina	na	na	0.00%	100.0%	97.8%
Spain	na	na	0.00%	100.0%	100.0%
Thailand	na	na	0.00%	90.0%	97.8%
Israel	na	na	0.00%	0.00%	94.4%
Poland	na	na	0.00%	75.0%	100.0%
Portugal	na	na	00.0%	80.0%	100.0%
Slovakia	na	na	0.00%	100.0%	100.0%
Malaysia	na	na	0.00%	75.0%	100.0%
Turkey	na	na	0.00%	100.0%	100.0%
Uruguay	na	na	0.00%	100.0%	100.0%
Slovenia	na	na	0.00%	100.0%	100.0%
Bangladesh	na	na	0.00%	0.00%	100.0%
Not Specified	na	na	0.00%	0.00%	66.7%
<b>All subclass 462 second visa</b>	<b>0.0%</b>	<b>0.0%</b>	<b>0.0%</b>	<b>90.7%</b>	<b>96.8%</b>
<b>All 462 Work and Holiday</b>	<b>98.6%</b>	<b>98.4%</b>	<b>97.8%</b>	<b>97.9%</b>	<b>97.4%</b>

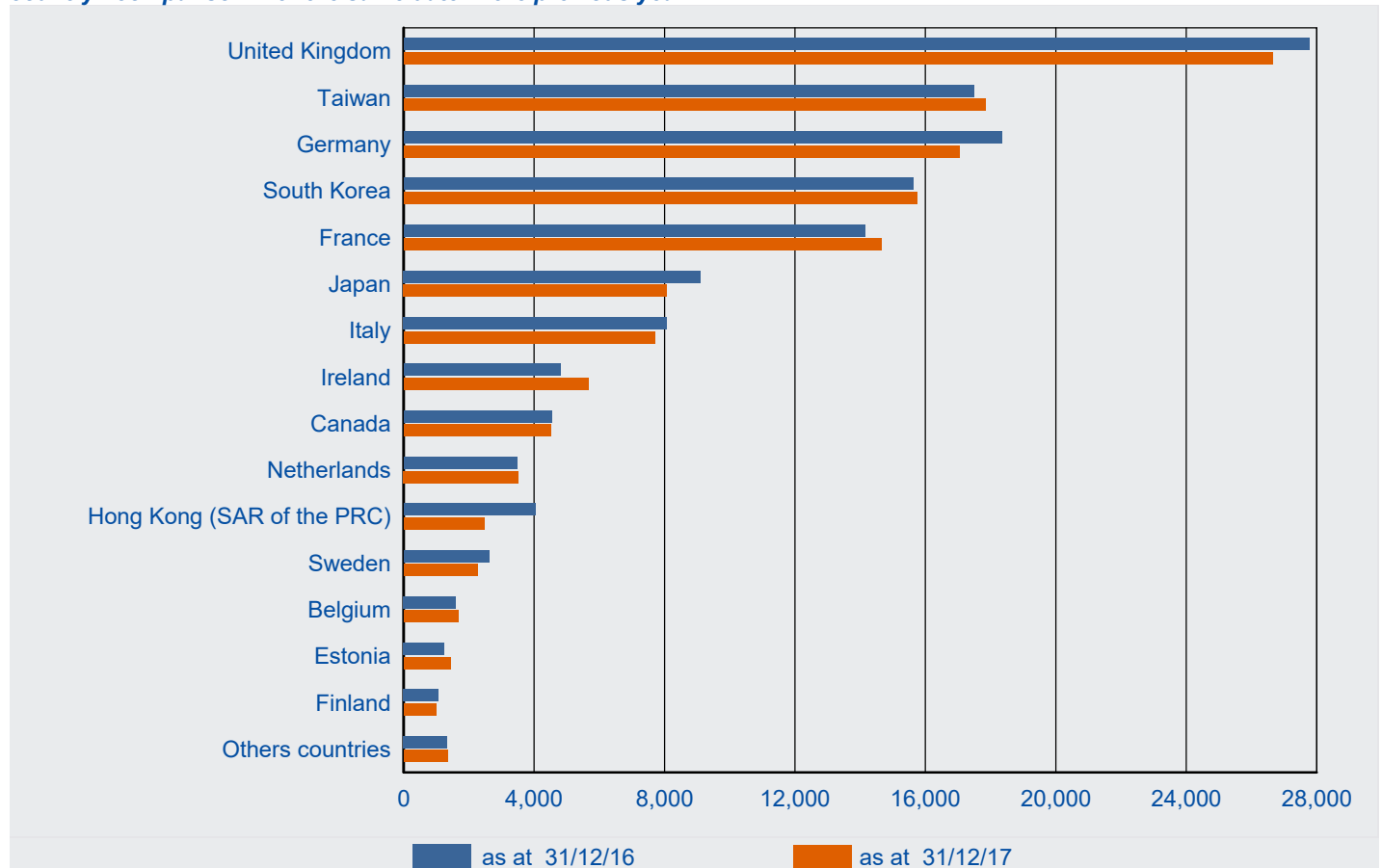
Note: Further information on statistical tables presented by citizenship country can be found on page 1 under 'About this report'



# 4 Visa Holders in Australia

## 4 Visa holders in Australia

4.01 Total number of Working Holiday (subclass 417) visa holders in Australia as at 31 December 2017 by citizenship country - comparison with the same date in the previous year

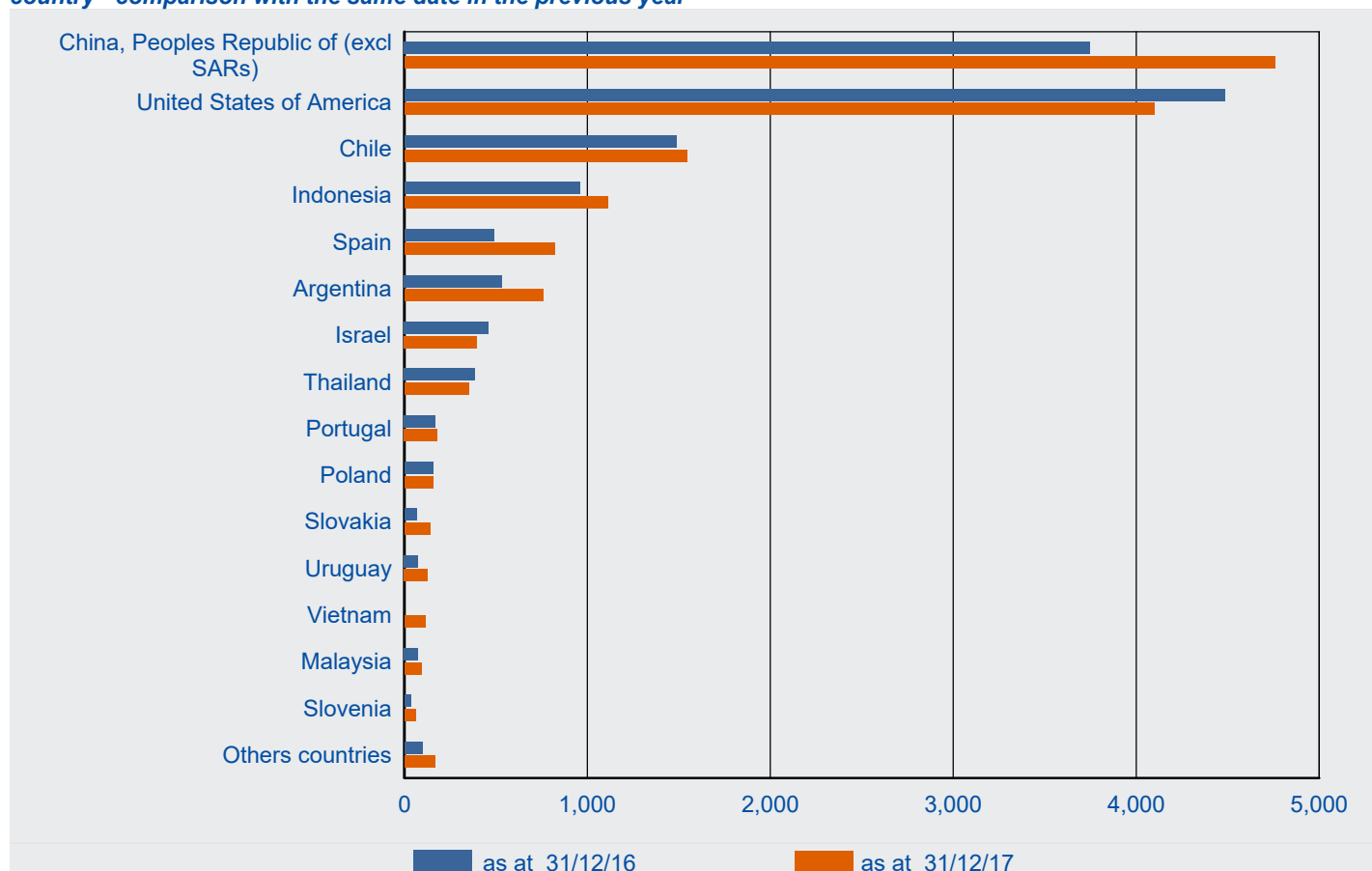


Citizenship Country	31/12/16	31/12/17	% Change from 31/12/16	31/12/17 as % of Total
United Kingdom	27,766	26,640	-4.1%	20.2%
Taiwan	17,493	17,840	2.0%	13.6%
Germany	18,338	17,038	-7.1%	13.0%
South Korea	15,624	15,753	0.8%	12.0%
France	14,157	14,648	3.5%	11.1%
Japan	9,107	8,070	-11.4%	6.1%
Italy	8,074	7,705	-4.6%	5.9%
Ireland	4,801	5,664	18.0%	4.3%
Canada	4,533	4,502	-0.7%	3.4%
Netherlands	3,486	3,523	1.1%	2.7%
Hong Kong (SAR of the PRC)	4,044	2,480	-38.7%	1.9%
Sweden	2,610	2,277	-12.8%	1.7%
Belgium	1,600	1,661	3.8%	1.3%
Estonia	1,248	1,425	14.2%	1.1%
Finland	1,066	991	-7.0%	0.8%
Denmark	945	876	-7.3%	0.7%
Norway	297	344	15.8%	0.3%
Malta	50	78	56.0%	0.1%
Cyprus	43	38	-11.6%	0.0%
Israel		<5		0.0%
Thailand		<5		0.0%
Not Specified	0	<5	0.00%	0.0%
<b>Total</b>	<b>135,282</b>	<b>131,557</b>	<b>-2.8%</b>	<b>100.0%</b>

Note: Further information on statistical tables presented by citizenship country can be found on page 1 under 'About this report'

## 4 Visa holders in Australia

4.02 Total number of Work and Holiday (subclass 462) visa holders in Australia as at 31 December 2017 by citizenship country - comparison with the same date in the previous year



Citizenship Country	31/12/16	31/12/17	% Change from 31/12/16	31/12/17 as % of Total
China, Peoples Republic of (excl SARs)	3,747	4,759	27.0%	32.0%
United States of America	4,482	4,097	-8.6%	27.5%
Chile	1,485	1,543	3.9%	10.4%
Indonesia	957	1,110	16.0%	7.5%
Spain	488	821	68.2%	5.5%
Argentina	533	757	42.0%	5.1%
Israel	460	396	-13.9%	2.7%
Thailand	386	353	-8.5%	2.4%
Portugal	170	180	5.9%	1.2%
Poland	155	156	0.6%	1.0%
Slovakia	68	141	107.4%	0.9%
Uruguay	74	127	71.6%	0.9%
Vietnam	na	113	na	0.8%
Malaysia	75	92	22.7%	0.6%
Slovenia	36	63	75.0%	0.4%
Hungary	na	54	na	0.4%
Turkey	81	48	-40.7%	0.3%
Singapore	na	42	na	0.3%
Bangladesh	16	6	-62.5%	0.0%
Peru	na	<5	na	0.0%
Iran		<5		0.0%
Italy		<5		0.0%
Luxembourg	na	<5	na	0.0%
San Marino	na	<5	na	0.0%
Not Specified	0	10	0.00%	0.1%
<b>Total</b>	<b>13,213</b>	<b>14,874</b>	<b>12.6%</b>	<b>100.0%</b>

Note: Further information on statistical tables presented by citizenship country can be found on page 1 under 'About this report'

## 4 Visa holders in Australia

### 4.03 Working Holiday Maker visa holders in Australia at 31 December 2017 by visa type and visa subclass - comparison with previous four periods

Visa Subclass	31/12/15	30/06/16	31/12/16	30/06/17	31/12/17
<b>417 Working Holiday</b>					
First visa	114,351	95,847	107,145	92,728	104,275
Second visa	32,250	30,909	28,137	28,187	27,282
<b>All 417 Working Holiday</b>	<b>146,601</b>	<b>126,756</b>	<b>135,282</b>	<b>120,915</b>	<b>131,557</b>
<b>462 Work and Holiday</b>					
First visa	8,582	10,620	13,213	13,061	13,308
Second visa	0	0	0	293	1,566
<b>All 462 Work and Holiday</b>	<b>8,582</b>	<b>10,620</b>	<b>13,213</b>	<b>13,354</b>	<b>14,874</b>
<b>All Working Holiday Maker</b>	<b>155,183</b>	<b>137,376</b>	<b>148,495</b>	<b>134,269</b>	<b>146,431</b>