



Australian Government

**Department of Immigration
and Border Protection**

Working Holiday Maker visa programme report

31 December 2016

This page is intentionally left blank.

Table of Contents

About this report	1
Enquiries	1
Definition of terms	2
Background to the Working Holiday Maker programme	3
Recent developments in the Working Holiday Maker programme	7
Executive summary	9
Section 1 Lodged	11
Section 2 Granted	17
Section 3 Grant Rate	29
Section 4 Visa holders in Australia	33

This page is intentionally left blank.

About this report

This report provides monthly and programme year data on the Working Holiday Maker (WHM) visa programme administered by the Department of Immigration and Border Protection (the department). The report has been provided to assist policymakers and stakeholder organisations.

This report is published every six months, and further developments will occur over time to increase and improve information sharing about the WHM programme. Current and previous versions of the report are available on the department's website. These reports, as well as a quarterly Working Holiday Maker visa grants pivot table, are available at <http://www.border.gov.au/about/reports-publications/research-statistics/statistics/visit-australia>.

Data is sourced from several departmental visa processing and recording systems. Data can be dynamic and there can be delays in transmission of information from the department's global operations. Variations in figures between this report and previous reports can occur. Due to these issues, data from the current financial year should always be considered provisional.

Further information about the Working Holiday Maker programme is available on the department's website at: <http://www.border.gov.au/Trav/Visa-1/417->
<http://www.border.gov.au/Trav/Visa-1/462->

Notes on statistical tables presented by citizenship country

A result of 'na' indicates that the country did not have a Working Holiday Maker arrangement with Australia during the specified period. This may be because the arrangement had not yet commenced or the arrangement is no longer in place. Refer to the table 'Australia's Working Holiday Maker visa arrangements' in the 'Background to the Working Holiday Maker visa programme' section.

A citizenship country of 'Not Specified' can result from eligible dual nationality applicants where the non-eligible nationality has been recorded for the WHM application.

Enquiries

Any comment or enquiries concerning this report should be sent to visa.reporting@border.gov.au quoting report id BR0110.

Definition of terms

Citizenship country:	The country of citizenship of the visa applicant or visa holder. Where a visa applicant or visa holder has more than one citizenship country, either the citizenship of the travel document or the citizenship nominated by the visa applicant is used.
Granted:	Unless otherwise specified, the number of visas granted includes all visa grants.
Snapshot date:	The snapshot date is a point in time at which a count is undertaken. In this report, the number of visa holders in Australia at a point in time is used.
Visa applicant:	Used to refer to clients applying for a visa.
Working Holiday Maker:	Refers collectively to both the Working Holiday (subclass 417) visa and the Work and Holiday (subclass 462) visa.

Background to the Working Holiday Maker visa programme

The Working Holiday Maker (WHM) programme's purpose is to foster closer ties and cultural exchange between Australia and partner countries, with particular emphasis on young adults. It has been in existence since 1975. Today, the WHM programme comprises the Working Holiday (subclass 417) and the Work and Holiday (subclass 462) visa programmes. Partner countries initially comprised a relatively small number of Commonwealth countries, but the programme has since grown to encompass 35 partner nations and regions (Hong Kong Special Administrative Region of the People's Republic of China) from across the globe.

Australia has an overarching bilateral arrangement, usually in the form of a Memorandum of Understanding, with each partner country. Of the 35 partner countries, 19 are Working Holiday (subclass 417) visa arrangements, and 16 are Work and Holiday (subclass 462) visa arrangements. The key differences between the two visas are that Work and Holiday visa arrangements generally have caps on the number of visas granted annually and additional eligibility requirements. The Work and Holiday visa arrangements that Australia has signed with Greece, Hungary, Israel, Luxembourg, Papua New Guinea, San Marino and Vietnam were not in effect as at 31 December 2016. Each of these arrangements will be implemented once both Australia and the partner country have the necessary legislative and administrative systems in place. Announcements will be made on the department's website once implementation processes are complete, enabling participants to lodge visa applications.

WHM arrangements are reciprocal in nature, providing Australians with similar opportunities overseas. In considering whether to add new partner countries to the WHM programme, the Australian Government considers a range of factors, including the ability of the prospective partner to offer reciprocity to Australians, and the strength of any cultural and people-to-people links.

Eligibility Requirements

All WHM (both Working Holiday and Work and Holiday) visa applicants must:

- be aged 18-30 at time of application
- hold a passport from an eligible partner country. A list of eligible countries is provided in the 'Australia's Working Holiday Maker Visa Arrangements' section of this report
- not be accompanied by dependent children during their stay in Australia
- meet health and character requirements
- meet financial requirements.

Work and Holiday visa applicants must meet additional requirements, including:

- functional English
- successful completion of at least two years of undergraduate university study
- a letter of home government support in association with their visa application.

Working while in Australia

All WHMs may work for the full duration of their 12 month stay in Australia, but cannot generally remain with any one employer for longer than six months (by operation of mandatory visa condition 8547).

WHM visa holders may be eligible for an extension of the six month employment limitation in certain circumstances, including:

- Visa holders who have carried out six months' work as an au pair anywhere in Australia may be given approval to work for up to six additional months with the same employer.
- Visa holders who have carried out six months' work in eligible industries in Northern Australia may be given approval to work for up to six additional months with the same employer. The eligible industries are aged and disability care, agriculture, forestry and fishing, construction, mining, and tourism and hospitality.

Studying while in Australia

All WHMs are entitled to study for a period of up to four months during their 12 month stay in Australia.

Background to the Working Holiday Maker visa programme - continued

Second Working Holiday (subclass 417) or Work and Holiday (subclass 462) visa

Participants are generally limited to holding only one Working Holiday visa or Work and Holiday visa in their lifetime.

However, first-time Working Holiday (subclass 417) visa holders who undertake three months (88 days) of 'specified work' in regional Australia during their stay acquire eligibility to apply for a second such visa.

'Specified work' includes work in the agriculture, mining and construction industries. For the purposes of second Working Holiday visa eligibility, regional Australia includes large parts of rural and regional Australia, which are identified in a list of postcodes available on the department's website at:

<http://www.border.gov.au/Trav/Visa-1/417->.

First-time Work and Holiday (subclass 462) visa holders who undertake three months of 'specified subclass 462 work' during their stay may acquire eligibility to apply for a second Work and Holiday visa, as long as this work is performed after 18 November 2016.

'Specified subclass 462 work' is work that is undertaken in a 'specified' field or industry in a designated area in northern Australia. Approved industries for specified work include plant and animal cultivation; fishing and pearling; tree farming and felling; and tourism and hospitality. For the purposes of second Work and Holiday (subclass 462) visa eligibility, northern Australia is identified in a list of postcodes available on the department's website at <http://www.border.gov.au/Trav/Visa-1/462->

Processing Times

The visa processing service standard for first Working Holiday (subclass 417) visa applications is that 75 per cent are finalised within six calendar days of lodgement. In the six months to 31 December 2016, 75.1 per cent of first Working Holiday visas were finalised within service standards. The service standard for second Working Holiday (subclass 417) visa applications is that 75 per cent are finalised within 21 calendar days of lodgement. In the six months to 31 December 2016, 52.8 per cent of second Working Holiday visas were finalised within service standards.

The visa processing service standard for Work and Holiday (subclass 462) online visa applications (USA nationals only) is that 75 per cent are finalised within six calendar days of lodgement. In the six months to 31 December 2016, 77.5 per cent of online Work and Holiday visa applications were finalised within service standards. The service standard for Work and Holiday (subclass 462) paper visa applications is that 75 per cent are finalised within 14 calendar days of lodgement. In the six months to 31 December 2016, 62.9 per cent of paper Work and Holiday visa applications were finalised within service standards.

Processing times can be affected by factors such as the completeness of applications lodged and additional checks performed by visa processing officers, such as those relating to health and character.

Australia's Working Holiday Maker visa arrangements

Commencement Date	Country / Region	Type of Arrangement	Cap
1975	United Kingdom	Working Holiday (SC 417)	N/A
1975	Ireland	Working Holiday (SC 417)	N/A
1975	Canada	Working Holiday (SC 417)	N/A
1 December 1980	Japan	Working Holiday (SC 417)	N/A
1 July 1995	South Korea	Working Holiday (SC 417)	N/A
1 July 1996	Malta	Working Holiday (SC 417)	N/A
1 July 2000	Germany	Working Holiday (SC 417)	N/A
1 July 2001	Sweden	Working Holiday (SC 417)	N/A
1 July 2001	Norway	Working Holiday (SC 417)	N/A
1 July 2001	Denmark	Working Holiday (SC 417)	N/A
15 September 2001	Hong Kong (HKSAR of the PRC)	Working Holiday (SC 417)	N/A
1 May 2002	Finland	Working Holiday (SC 417)	N/A
1 July 2002	Cyprus	Working Holiday (SC 417)	N/A
2 January 2004	Italy	Working Holiday (SC 417)	N/A
20 February 2004	France	Working Holiday (SC 417)	N/A
1 November 2004	Taiwan	Working Holiday (SC 417)	N/A
1 November 2004	Belgium	Working Holiday (SC 417)	N/A
20 May 2005	Estonia	Working Holiday (SC 417)	N/A
1 August 2005	Thailand	Work and Holiday (SC 462)	500
1 March 2006	Chile	Work and Holiday (SC 462)	1500
1 July 2006	Netherlands	Working Holiday (SC 417)	N/A
31 March 2007	Turkey	Work and Holiday (SC 462)	100
31 October 2007	United States of America	Work and Holiday (SC 462)	N/A
1 February 2009	Malaysia	Work and Holiday (SC 462)	100
1 July 2009	Indonesia	Work and Holiday (SC 462)	1000
31 December 2010	Bangladesh	Work and Holiday (SC 462)	100
29 February 2012	Argentina	Work and Holiday (SC 462)	700
1 April 2013	Uruguay	Work and Holiday (SC 462)	200
1 August 2014	Poland	Work and Holiday (SC 462)	200
23 November 2014	Portugal	Work and Holiday (SC 462)	200
23 November 2014	Spain	Work and Holiday (SC 462)	500
21 September 2015	China (excl. SARs)	Work and Holiday (SC 462)	5000
1 January 2016	Slovak Republic	Work and Holiday (SC 462)	200
1 January 2016	Slovenia	Work and Holiday (SC 462)	200
1 June 2016	Israel	Work and Holiday (SC 462)	500
Signed 12 October 2011	Papua New Guinea*	Work and Holiday (SC 462)	100
Signed 14 May 2014	Greece*	Work and Holiday (SC 462)	500
Signed 18 March 2015	Vietnam*	Work and Holiday (SC 462)	200
Signed 24 February 2016	Hungary*	Work and Holiday (SC 462)	200
Signed 23 September 2016	San Marino*	Work and Holiday (SC 462)	100
Signed 28 September 2016	Luxembourg*	Work and Holiday (SC 462)	100

* Not yet in effect as at 31 December 2016

Countries with which Australia is currently negotiating new Work and Holiday (subclass 462) arrangements

- | | |
|------------------|--------------------|
| 1 Andorra | 10 Lithuania |
| 2 Austria | 11 Mexico |
| 3 Brazil | 12 Monaco |
| 4 Croatia | 13 Mongolia |
| 5 Czech Republic | 14 Peru |
| 6 Ecuador | 15 Philippines |
| 7 Fiji | 16 Singapore |
| 8 India | 17 Solomon Islands |
| 9 Latvia | 18 Switzerland |

Recent developments in the Working Holiday Maker programme

Signature of Work and Holiday (subclass 462) arrangements with Luxembourg and San Marino

New Work and Holiday (subclass 462) visa arrangements were signed with San Marino on 23 September 2016 and with Luxembourg on 12 December 2016, each with an annual cap of 100 places. These arrangements were not yet in effect as at 31 December 2016.

Commencement of the second Work and Holiday (subclass 462) visa programme

Since 19 November 2016, first-time Work and Holiday (subclass 462) visa holders have the opportunity to apply for a second Work and Holiday visa if they complete three months of 'specified subclass 462 work' in northern Australia after that date. Work and Holiday visa holders were previously limited to a single visa in their lifetime.

This page is intentionally left blank.

Executive Summary

Key Points

- In the six months to 31 December 2016, a total of 115,335 Working Holiday Maker (WHM) (subclass 417 and subclass 462) visas were granted, a 1.2 per cent reduction compared to the corresponding period in 2015-16.
- There was a 1.4 per cent reduction in first Working Holiday (subclass 417) visa grants to 85,641 and a 9.5 per cent reduction in second Working Holiday visa grants to 17,477. Work and Holiday (subclass 462) visa grants increased 15.4 per cent to 12,217.
- There were 148,495 WHM visa holders in Australia at 31 December 2016, a 4.3 per cent reduction compared to 31 December 2015.

1 Applications lodged

In the six months to 31 December 2016, there was a 2.6 per cent reduction in WHM visa application lodgements compared to the corresponding period in 2015-16.

There were a total of 85,741 first Working Holiday (subclass 417) visa applications, 18,509 second Working Holiday (subclass 417) visa applications, and 12,412 Work and Holiday (subclass 462) visa applications lodged in the six months to 31 December 2016.

The very high average grant rate of WHM visas (98.6 per cent - see Section 3) means the number of visas granted tends to be very close to the number of visa applications lodged during the period, noting that there can be a delay between lodgement and grant.

2 Visas granted

First Working Holiday (subclass 417) visa programme

A total of 85,641 first Working Holiday visas were granted in the six months to 31 December 2016, a 1.4 per cent reduction compared to the corresponding period in 2015-16.

Reductions in Working Holiday visa grant numbers may be influenced by a range of factors including changing domestic and international economic conditions and seasonal variability in visa application numbers in partner countries.

The top five countries for first Working Holiday visa grants were:

- United Kingdom (down 1.1 per cent to 17,821)
- Germany (up 4.7 per cent to 14,776)
- France (up 2.7 per cent to 10,801)
- South Korea (down 0.6 per cent to 9049)

- Taiwan (down 16.2 per cent to 6267).

Second Working Holiday (subclass 417) visa programme

A total of 17,477 second Working Holiday visas were granted in the six months to 31 December 2016. This is a 9.5 per cent reduction compared to the corresponding period in 2015-16.

There is a direct but delayed flow-on relationship between the rate of first Working Holiday visa grants and the rate of second Working Holiday visa grants, which usually takes 12 to 18 months to be reflected in the data. Thus, where there has been an increase or decrease in first Working Holiday visa grants, a similar but delayed trend can be expected to flow through to second Working Holiday visa grants.

The top five countries for second Working Holiday visa grants were:

- United Kingdom (down 11.2 per cent to 3979)
- Taiwan (up 1.9 per cent to 3680)
- South Korea (down 5.6 per cent to 1919)
- France (down 13.0 per cent to 1507)
- Italy (down 29.6 per cent to 1163).

In the six months to 31 December 2016, around 94 per cent of the second Working Holiday visa applicants indicated they engaged in agricultural work to acquire eligibility, around five per cent undertook construction work, and under one per cent undertook mining work (see Table 2.15). The employment of the remaining participants (under half a percent) has not been disaggregated.

Executive Summary - continued

Combined Working Holiday (subclass 417) visa programme

A total of 103,118 combined Working Holiday (first and second) visas were granted in the six months to 31 December 2016. This is a 2.9 per cent reduction compared to the corresponding period in 2015-16 and is a result of the fall in both first Working Holiday visa and second Working Holiday visa applications granted.

The top five countries for combined first and second Working Holiday visa grants were:

- United Kingdom (down 3.1 per cent to 21,800)
- Germany (up 3.7 per cent to 15,694)
- France (up 0.4 per cent to 12,308)
- South Korea (down 1.5 per cent to 10,968)
- Taiwan (down 10.3 per cent to 9947).

Work and Holiday (subclass 462) visa programme

A total of 12,217 Work and Holiday visas were granted in the six months to 31 December 2016. This is a 15.4 per cent increase compared to the corresponding period in 2015-16.

The top five countries for visa grants under the Work and Holiday visa programme were:

- United States of America (down 6.1 per cent to 4096)
- China (up 1.6 per cent to 2911)
- Chile (up 73.7 per cent to 1501)
- Argentina (remained at 700)
- Spain (up 18.3 per cent to 596).

3 Grant rates

The grant rate for first Working Holiday visas for the six months to 31 December 2016 was 99.3 per cent, the grant rate for second Working Holiday visas was 96.3 per cent and the grant rate for Work and Holiday visas was 97.8 per cent.

The grant rates for WHM visas are indicative of the low risk nature of this caseload. The large proportion of online applications for this caseload also contributes to the high grant rate. A number of automated eligibility checks occur during online applications, alerting clients early in the process if they do not meet visa requirements.

4 Working Holiday Makers in Australia

Working Holiday (subclass 417) visa holders

As at 31 December 2016, there were 135,282 Working Holiday visa holders in Australia (first and second visas). This is a 7.72 per cent reduction in the number

of Working Holiday visa holders in Australia compared to 31 December 2015.

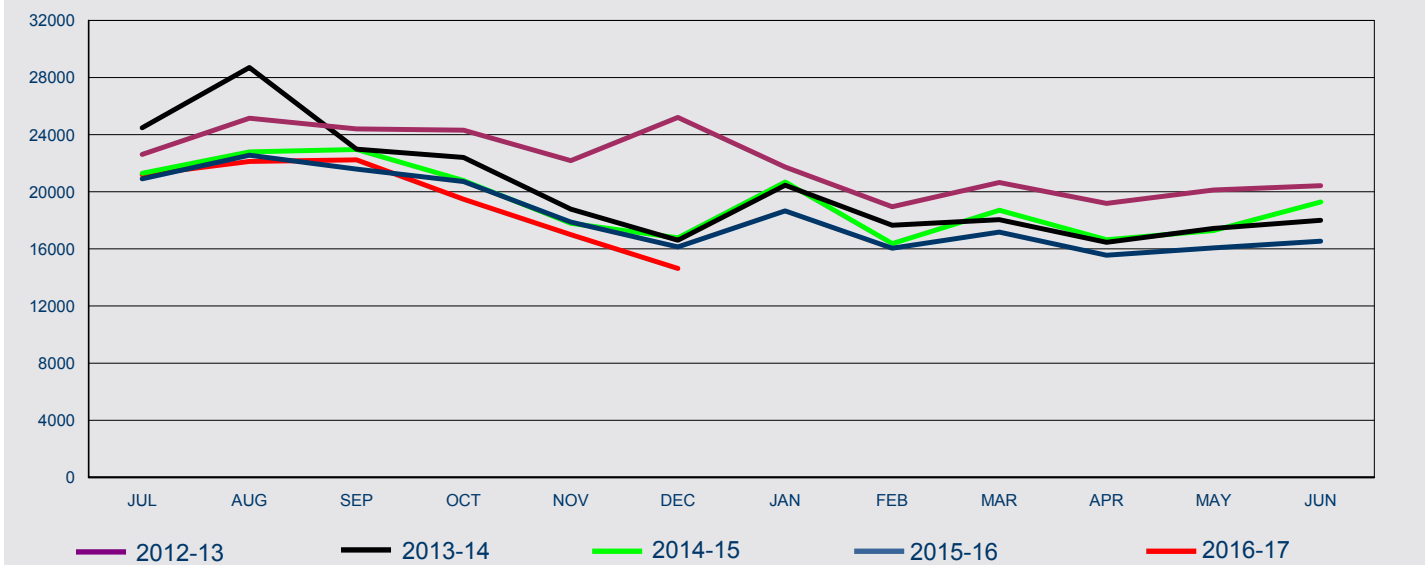
Work and Holiday (subclass 462) visa holders

As at 31 December 2016, there were 13,213 Work and Holiday visa holders in Australia. This is a 54.0 per cent increase in the number of Work and Holiday visa holders in Australia compared to 31 December 2015

1 Lodged

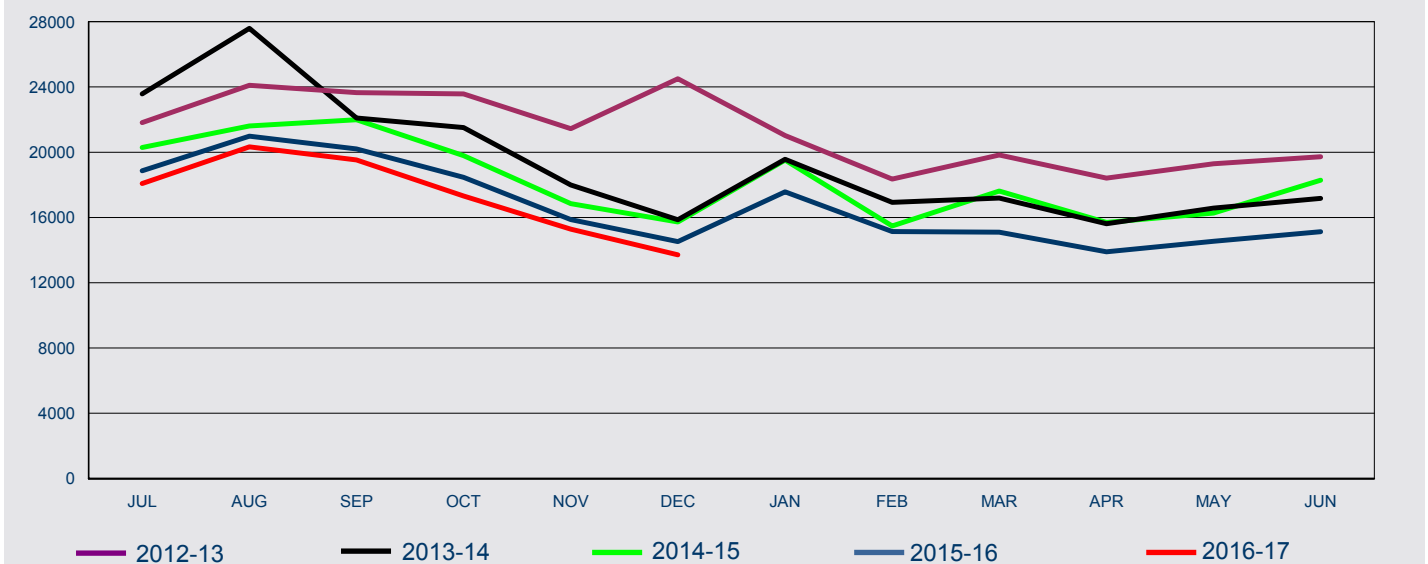
1 Lodged

1.01 Total number of Working Holiday Maker visa applications lodged in 2016-17 to 31 December 2016 by month - comparison with previous four financial years



FY Lodged	Jul	Aug	Sep	Oct	Nov	Dec	Jan	Feb	Mar	Apr	May	Jun	Total
2012-13	22,615	25,157	24,409	24,317	22,187	25,206	21,734	18,957	20,649	19,189	20,122	20,432	264,974
2013-14	24,479	28,702	22,982	22,406	18,784	16,612	20,467	17,663	18,048	16,467	17,439	18,001	242,050
2014-15	21,298	22,797	22,964	20,781	17,789	16,781	20,684	16,369	18,704	16,640	17,289	19,294	231,390
2015-16	20,911	22,567	21,593	20,721	17,877	16,137	18,666	16,050	17,173	15,562	16,073	16,545	219,875
2016-17	21,193	22,125	22,239	19,474	16,998	14,633	-	-	-	-	-	-	116,662

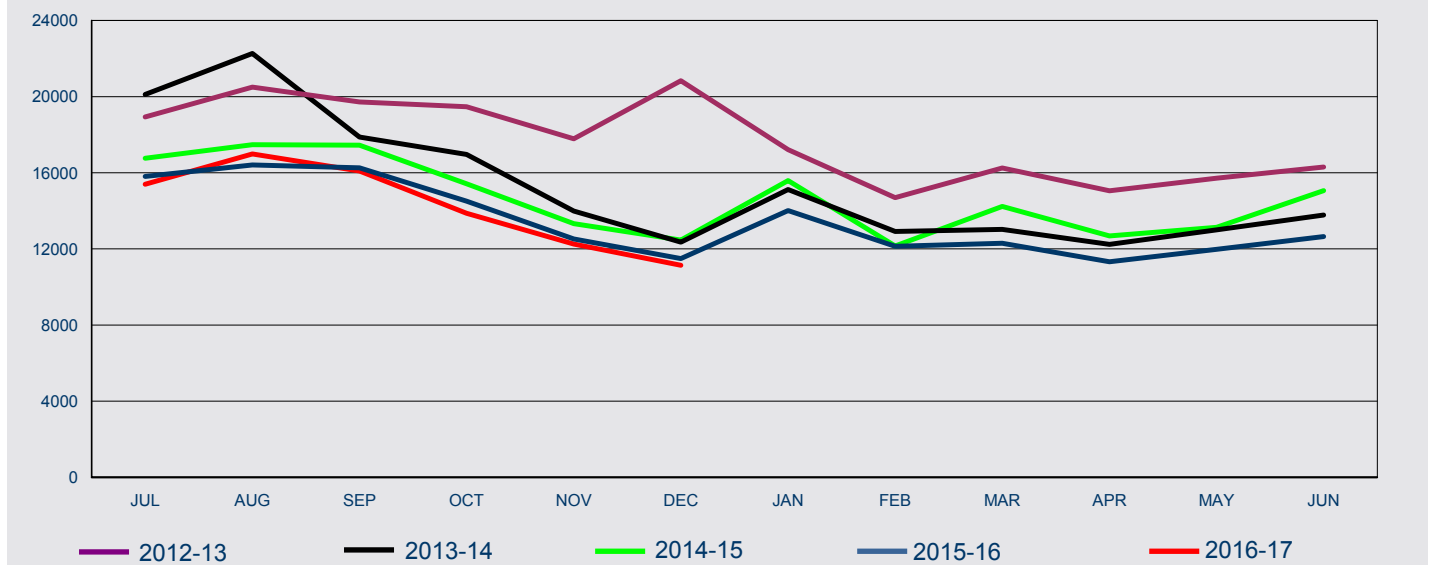
1.02 Total number of Working Holiday (subclass 417) visa applications lodged in 2016-17 to 31 December 2016 by month - comparison with previous four financial years



FY Lodged	Jul	Aug	Sep	Oct	Nov	Dec	Jan	Feb	Mar	Apr	May	Jun	Total
2012-13	21,809	24,098	23,652	23,577	21,447	24,507	21,022	18,353	19,835	18,416	19,288	19,718	255,722
2013-14	23,575	27,588	22,095	21,512	17,993	15,857	19,569	16,929	17,192	15,620	16,579	17,176	231,685
2014-15	20,292	21,614	21,987	19,790	16,847	15,721	19,518	15,484	17,621	15,691	16,272	18,286	219,123
2015-16	18,861	20,984	20,206	18,456	15,870	14,521	17,576	15,133	15,101	13,896	14,542	15,125	200,271
2016-17	18,082	20,325	19,529	17,318	15,284	13,712	-	-	-	-	-	-	104,250

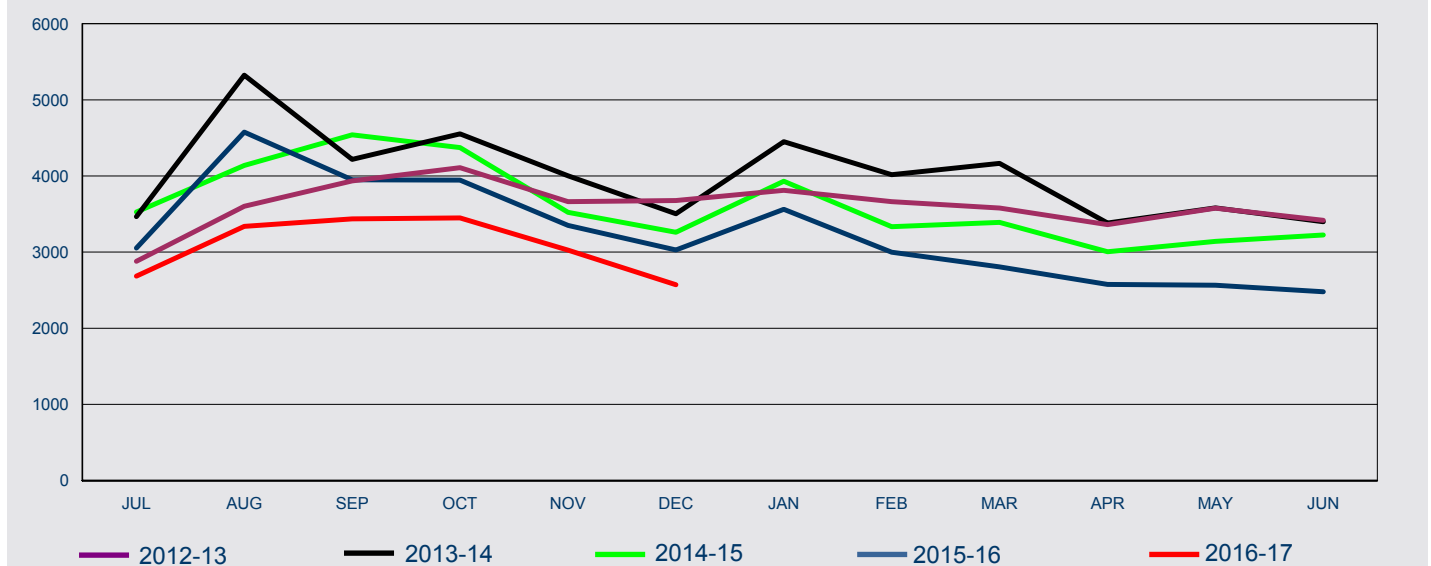
1 Lodged

1.03 Number of first Working Holiday (subclass 417) visa applications lodged in 2016-17 to 31 December 2016 by month - comparison with previous four financial years



FY Lodged	Jul	Aug	Sep	Oct	Nov	Dec	Jan	Feb	Mar	Apr	May	Jun	Total
2012-13	18,929	20,497	19,717	19,469	17,784	20,830	17,211	14,690	16,255	15,055	15,711	16,300	212,448
2013-14	20,110	22,264	17,877	16,960	13,990	12,354	15,119	12,913	13,026	12,238	12,998	13,777	183,626
2014-15	16,766	17,475	17,446	15,418	13,325	12,461	15,588	12,151	14,231	12,686	13,131	15,062	175,740
2015-16	15,808	16,408	16,256	14,510	12,519	11,493	14,013	12,135	12,294	11,321	11,976	12,645	161,378
2016-17	15,397	16,986	16,093	13,868	12,257	11,140							85,741

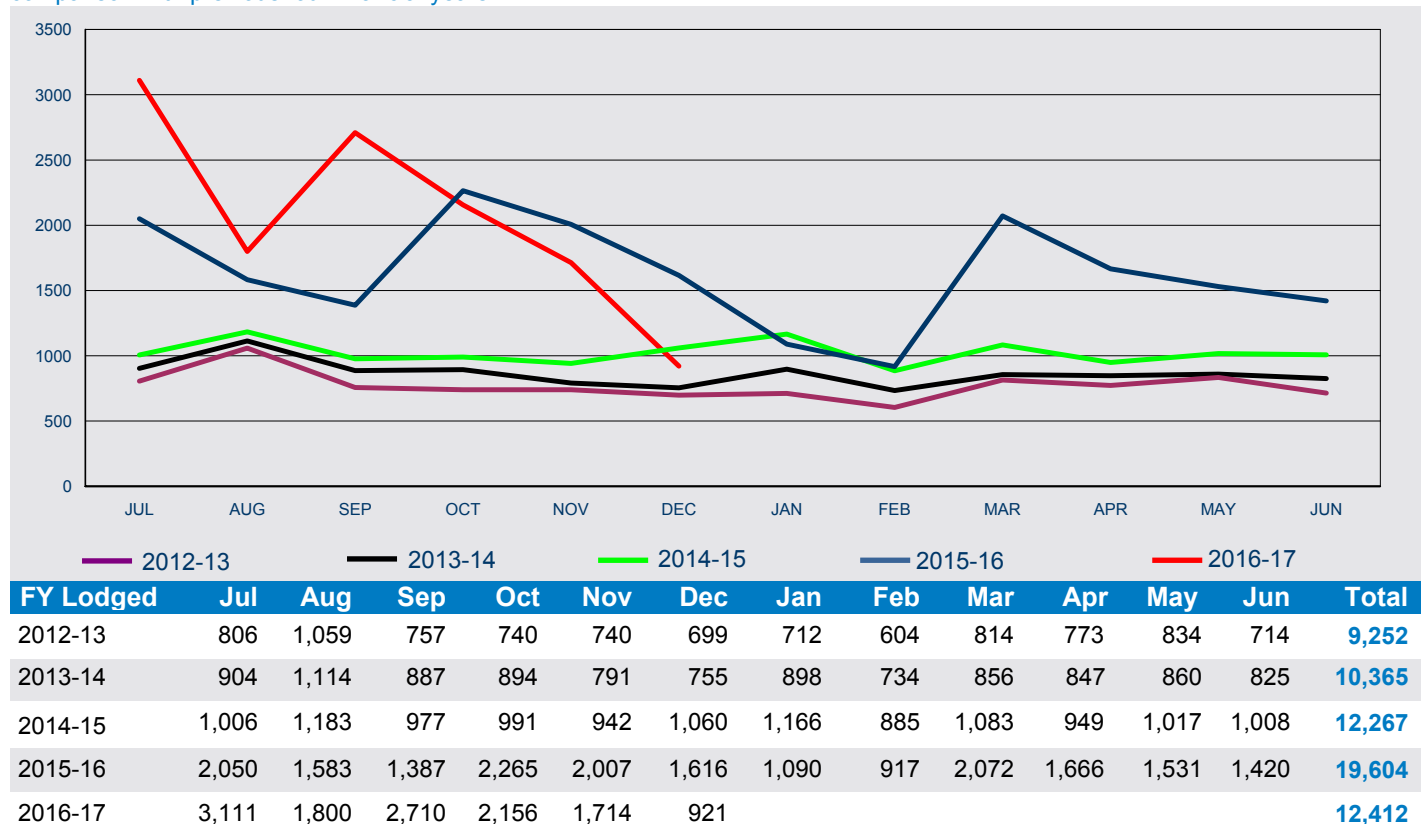
1.04 Number of second Working Holiday (subclass 417) visa applications lodged in 2016-17 to 31 December 2016 by month - comparison with previous four financial years



FY Lodged	Jul	Aug	Sep	Oct	Nov	Dec	Jan	Feb	Mar	Apr	May	Jun	Total
2012-13	2,880	3,601	3,935	4,108	3,663	3,677	3,811	3,663	3,580	3,361	3,577	3,418	43,274
2013-14	3,465	5,324	4,218	4,552	4,003	3,503	4,450	4,016	4,166	3,382	3,581	3,399	48,059
2014-15	3,526	4,139	4,541	4,372	3,522	3,260	3,930	3,333	3,390	3,005	3,141	3,224	43,383
2015-16	3,053	4,576	3,950	3,946	3,351	3,028	3,563	2,998	2,807	2,575	2,566	2,480	38,893
2016-17	2,685	3,339	3,436	3,450	3,027	2,572							18,509

1 Lodged

1.05 Total number of Work and Holiday (subclass 462) visa applications lodged in 2016-17 to 31 December 2016 by month - comparison with previous four financial years

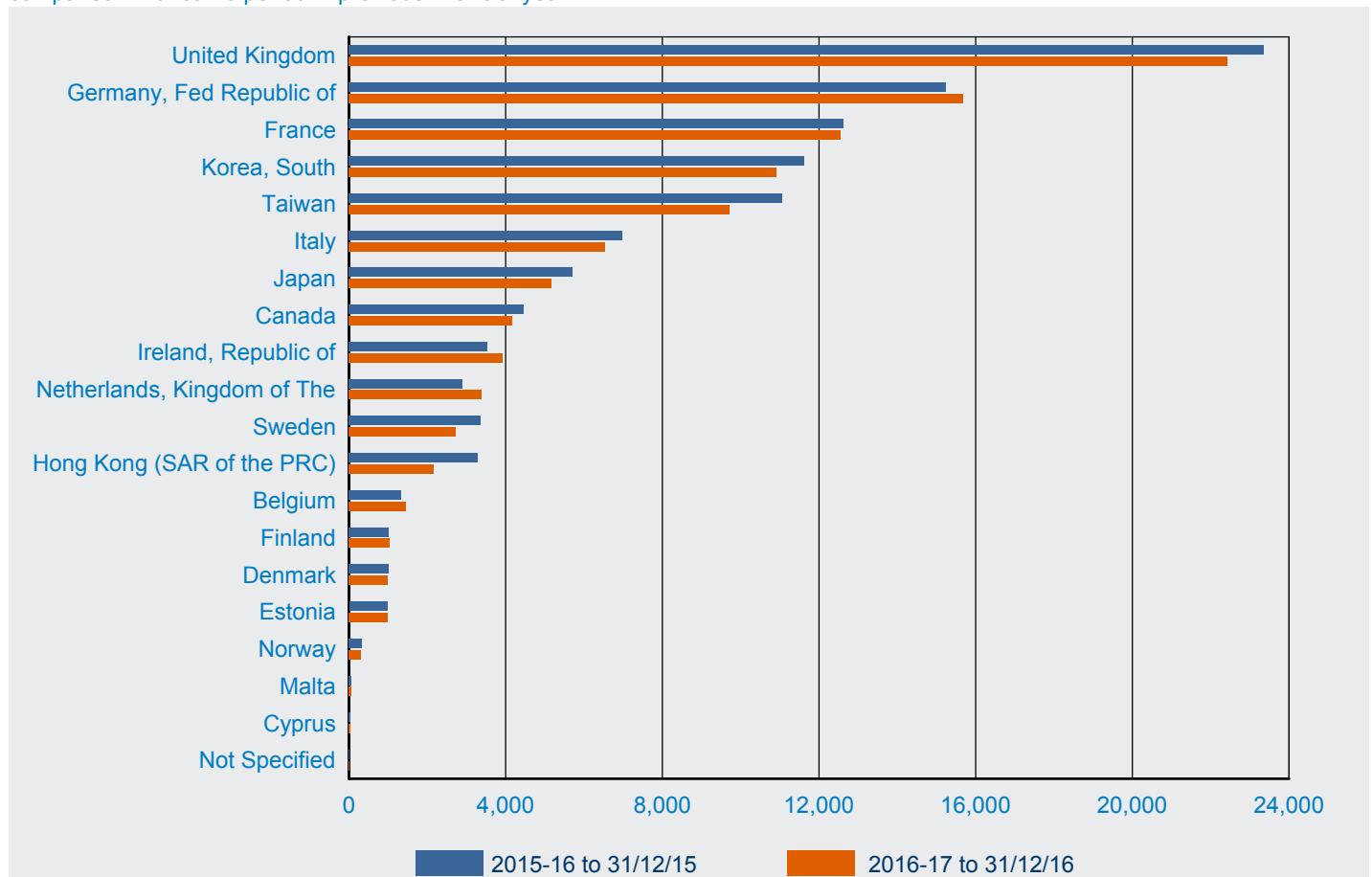


1.06 Total number of Working Holiday Maker visa applications lodged in the 6 month period between 1 July 2016 and 31 December 2016 by visa subclass and visa type - comparison with previous four periods

Visa Subclass	01/07/14 to 31/12/14	01/01/15 to 30/06/15	01/07/15 to 31/12/15	01/01/16 to 30/06/16	01/07/16 to 31/12/16
417 Working Holiday					
First visa	92,891	82,849	86,994	74,384	85,741
Second visa	23,360	20,023	21,904	16,989	18,509
All 417 Working Holiday	116,251	102,872	108,898	91,373	104,250
462 Work and Holiday	6,159	6,108	10,908	8,696	12,412
All Working Holiday Maker	122,410	108,980	119,806	100,069	116,662

1 Lodged

1.07 Number of Working Holiday (subclass 417) visa applications lodged in 2016-17 to 31 December 2016 by citizenship country - comparison with same period in previous financial year

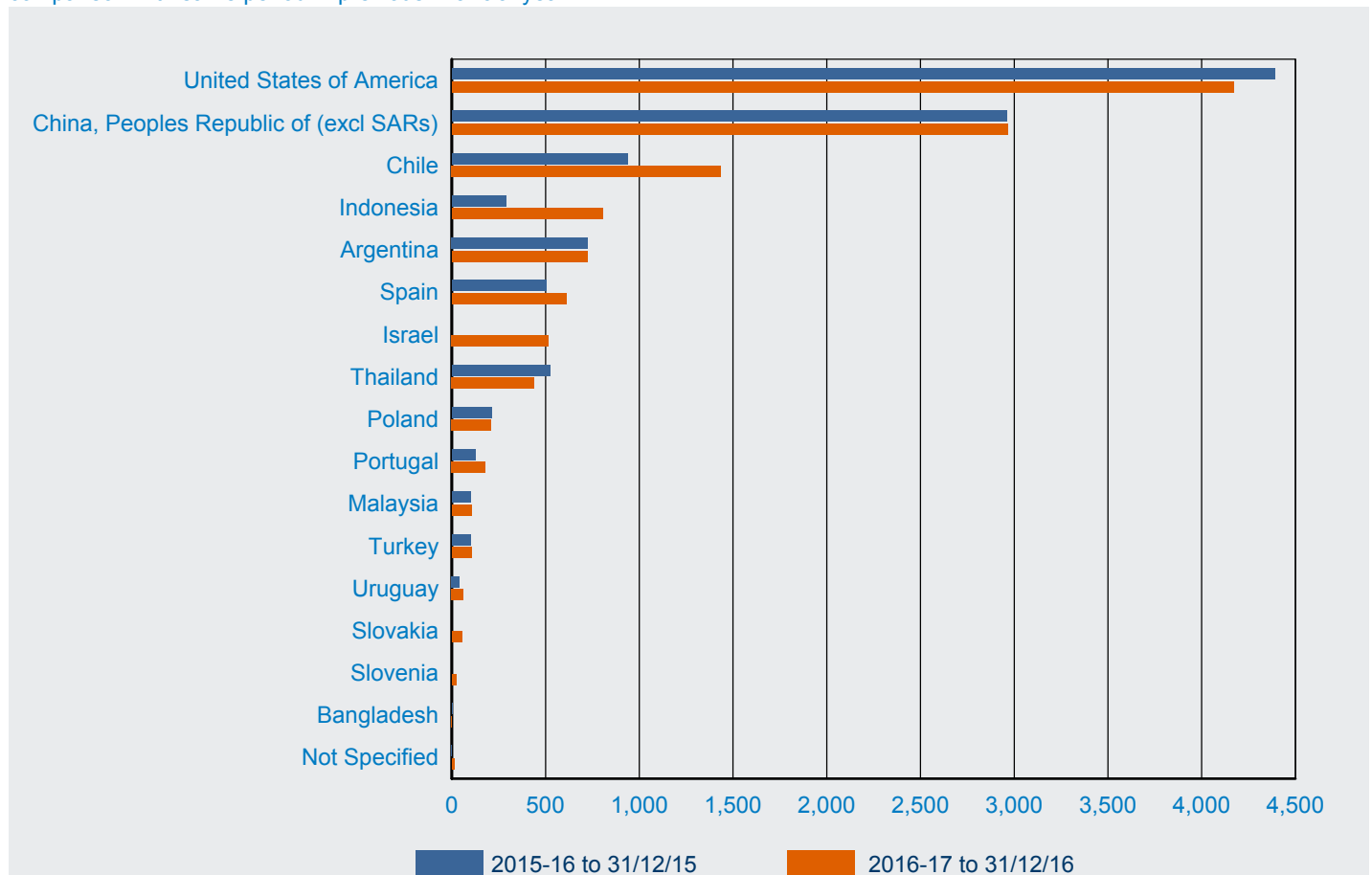


Citizenship Country	2015-16 to 31/12/15	2016-17 to 31/12/16	% Change from 2015-16	2016-17 as % of Total
United Kingdom	23,347	22,422	-4.0%	21.5%
Germany, Fed Republic of	15,231	15,694	3.0%	15.1%
France	12,620	12,540	-0.6%	12.0%
Korea, South	11,622	10,919	-6.0%	10.5%
Taiwan	11,054	9,712	-12.1%	9.3%
Italy	6,986	6,528	-6.6%	6.3%
Japan	5,710	5,160	-9.6%	4.9%
Canada	4,458	4,169	-6.5%	4.0%
Ireland, Republic of	3,527	3,935	11.6%	3.8%
Netherlands, Kingdom of The	2,888	3,376	16.9%	3.2%
Sweden	3,370	2,724	-19.2%	2.6%
Hong Kong (SAR of the PRC)	3,300	2,153	-34.8%	2.1%
Belgium	1,340	1,464	9.3%	1.4%
Finland	1,014	1,043	2.9%	1.0%
Denmark	1,025	1,000	-2.4%	1.0%
Estonia	976	991	1.5%	1.0%
Norway	331	311	-6.0%	0.3%
Malta	55	59	7.3%	0.1%
Cyprus	36	40	11.1%	0.0%
Not Specified	8	10	25.0%	0.0%
Total	108,898	104,250	-4.3%	100.0%

Note: Further information on statistical tables presented by citizenship country can be found on page 1 under 'About this report'

1 Lodged

1.08 Number of Work and Holiday (subclass 462) visa applications lodged in 2016-17 to 31 December 2016 by citizenship country - comparison with same period in previous financial year



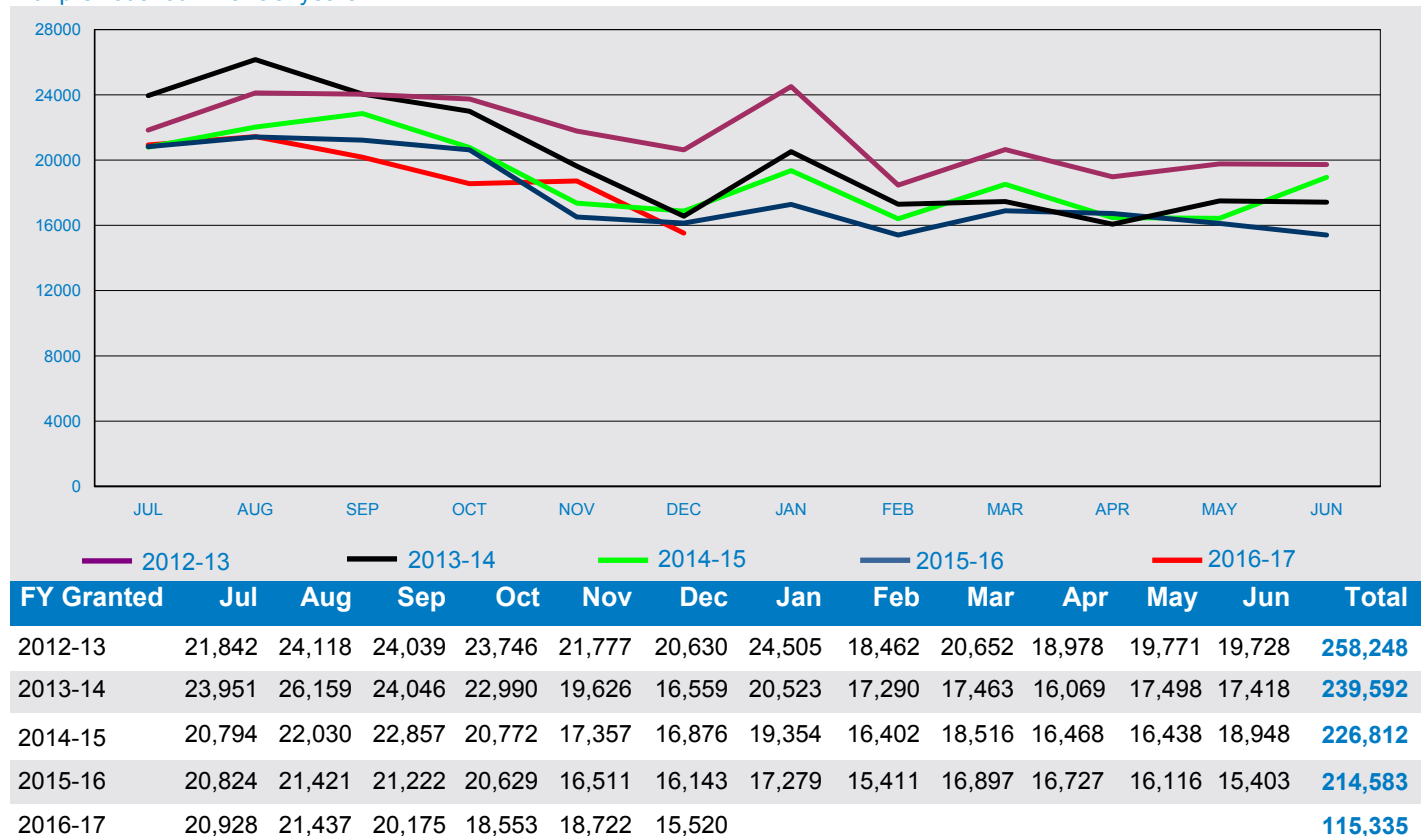
Citizenship Country	2015-16 to 31/12/15	2016-17 to 31/12/16	% Change from 2015-16	2016-17 as % of Total
United States of America	4,392	4 171	-5.0%	33.6%
China, Peoples Republic of (excl SARs)	2,958	2 965	0.2%	23.9%
Chile	937	1 435	53.1%	11.6%
Indonesia	290	803	176.9%	6.5%
Argentina	726	725	-0.1%	5.8%
Spain	502	609	21.3%	4.9%
Israel	na	517		4.2%
Thailand	522	439	-15.9%	3.5%
Poland	212	210	-0.9%	1.7%
Portugal	124	179	44.4%	1.4%
Malaysia	100	104	4.0%	0.8%
Turkey	98	103	5.1%	0.8%
Uruguay	41	62	51.2%	0.5%
Slovakia	na	53		0.4%
Slovenia	na	25		0.2%
Bangladesh	5	<5	-80.0%	0.0%
Not Specified	< 5	11	1000.0%	0.1%
Total	10,908	12,412	13.8%	100.0%

Note: Further information on statistical tables presented by citizenship country can be found on page 1 under 'About this report'

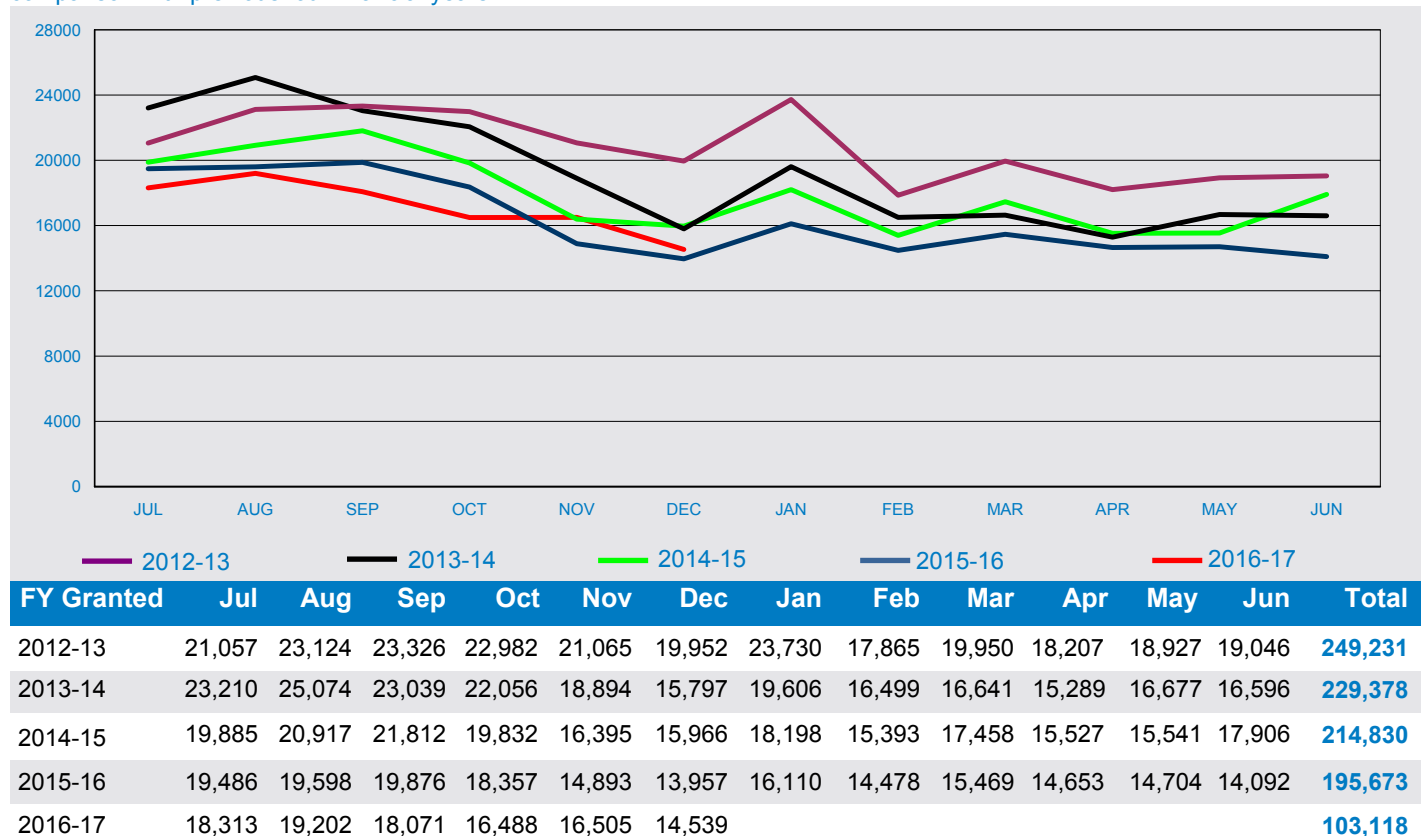
2 Granted

2 Granted

2.01 Total number of Working Holiday Maker visa applications granted in 2016-17 to 31 December 2016 by month - comparison with previous four financial years

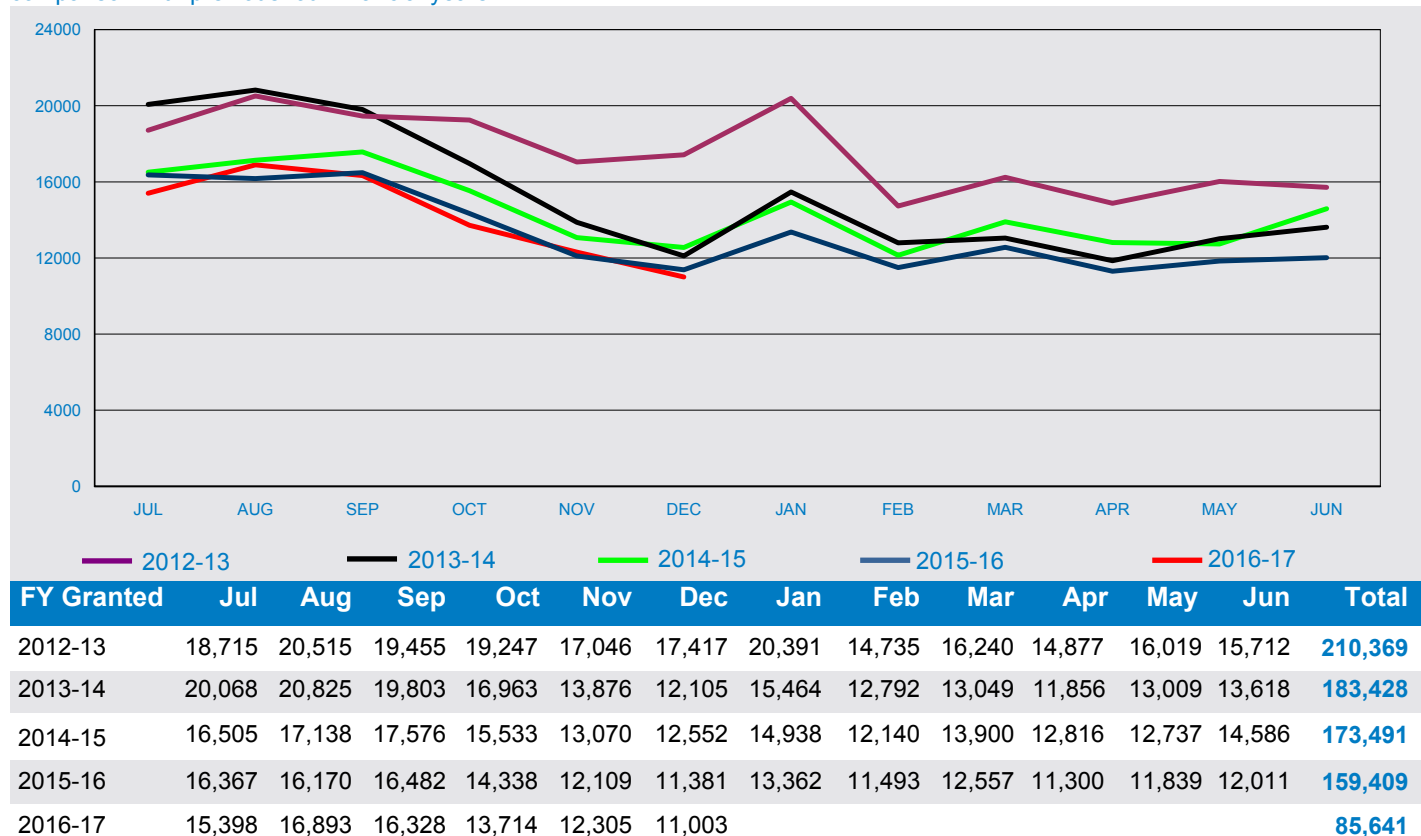


2.02 Total number of Working Holiday (subclass 417) visa applications granted in 2016-17 to 31 December 2016 by month - comparison with previous four financial years

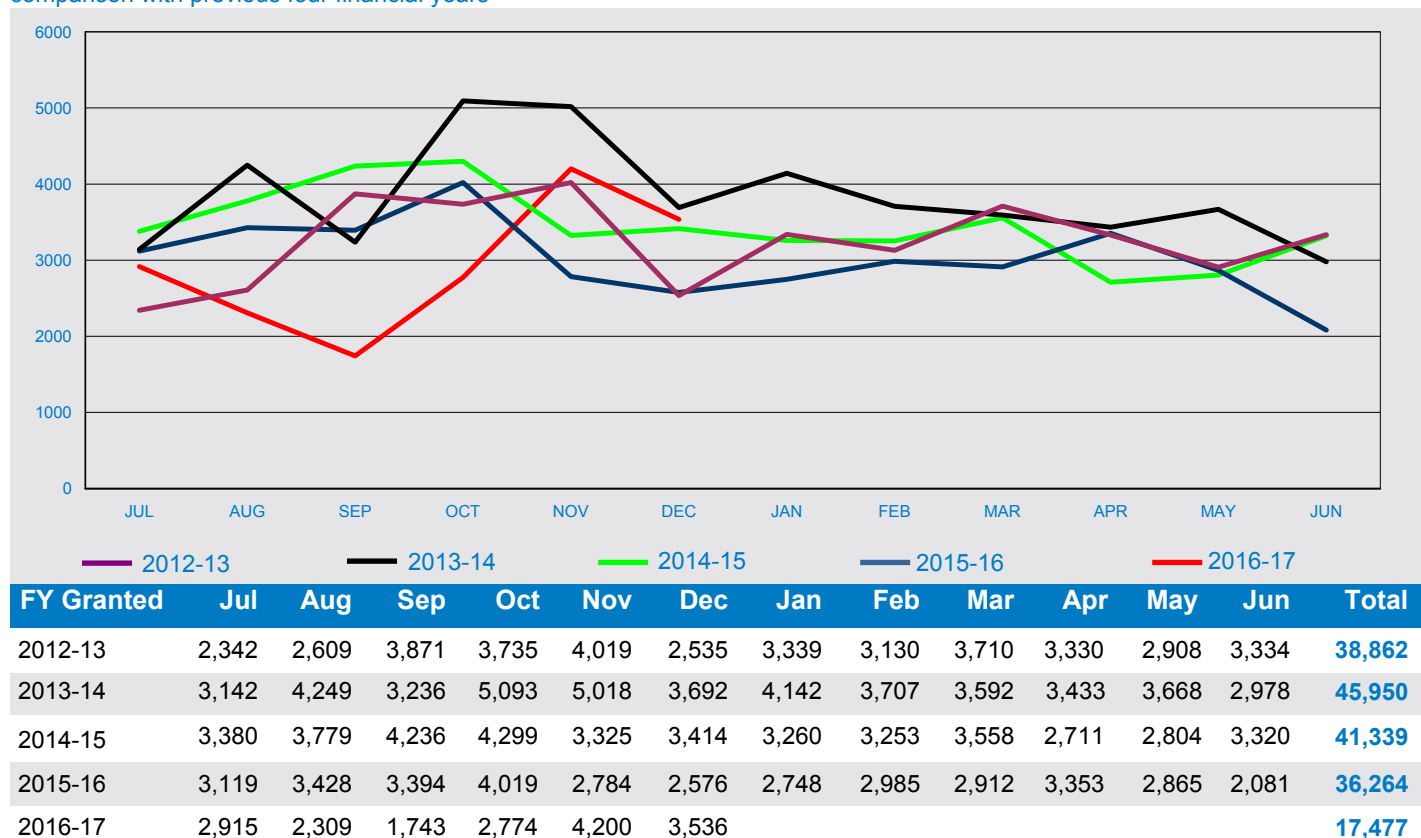


2 Granted

2.03 Number of first Working Holiday (subclass 417) visa applications granted in 2016-17 to 31 December 2016 by month - comparison with previous four financial years

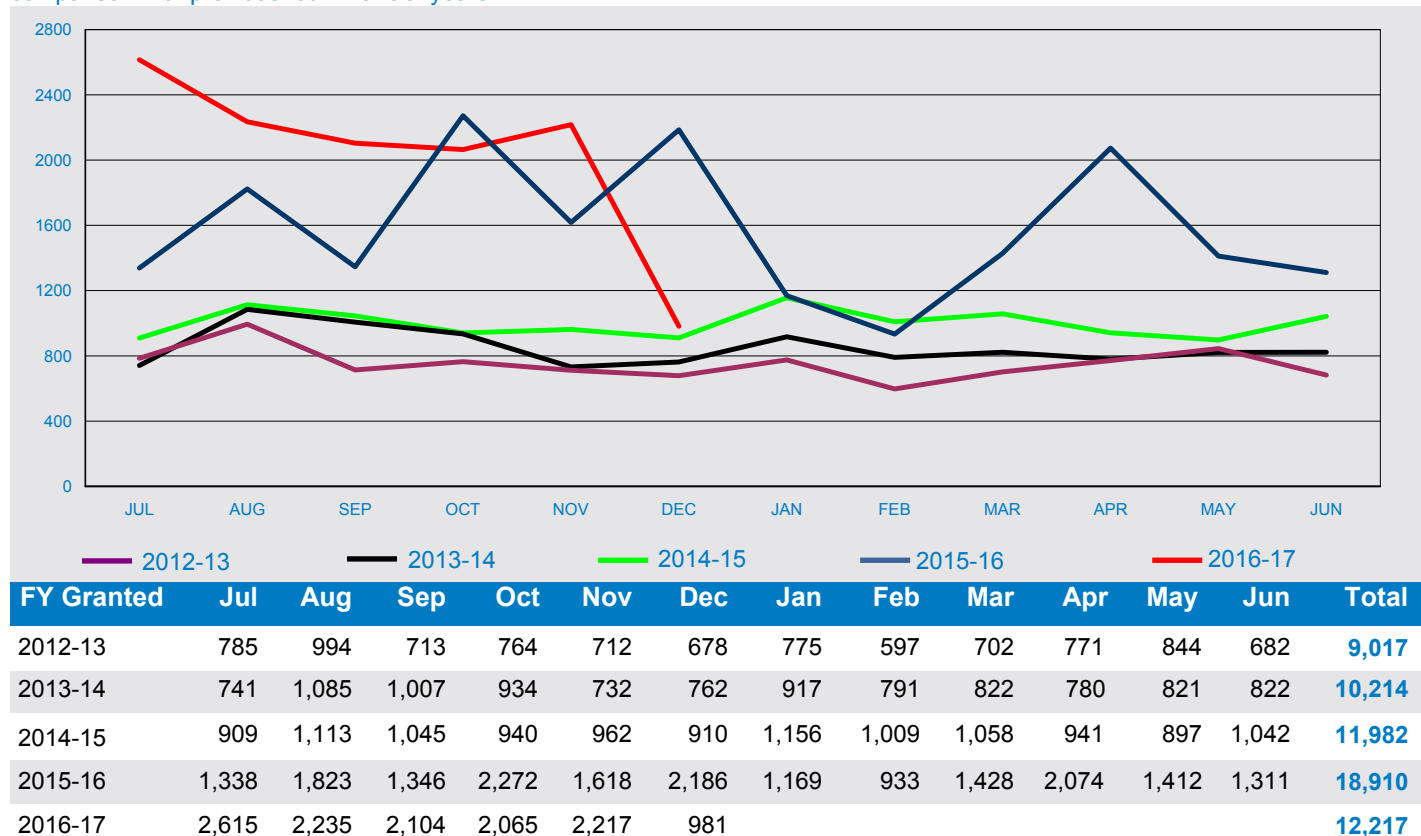


2.04 Number of second Working Holiday (subclass 417) visa applications granted in 2016-17 to 31 December 2016 by month - comparison with previous four financial years



2 Granted

2.05 Total number of Work and Holiday (subclass 462) visa applications granted in 2016-17 to 31 December 2016 by month - comparison with previous four financial years



2.06 Total number of Working Holiday Maker visa applications granted in the 6 month period between 1 July 2016 and 31 December 2016 by visa subclass and visa type - comparison with previous four periods

Visa Subclass	01/07/14 to 31/12/14	01/01/15 to 30/06/15	01/07/15 to 31/12/15	01/01/16 to 30/06/16	01/07/16 to 31/12/16
417 Working Holiday					
First visa	92,374	81,117	86,847	72,562	85,641
Second visa	22,433	18,906	19,320	16,944	17,477
All 417 Working Holiday	114,807	100,023	106,167	89,506	103,118
462 Work and Holiday	5,879	6,103	10,583	8,327	12,217
All Working Holiday Maker	120,686	106,126	116,750	97,833	115,335

2 Granted

2.07 Total number of Working Holiday (subclass 417) visa applications granted in 2016-17 to 31 December 2016 by citizenship country - comparison with the previous four financial years

Citizenship Country	2012-13 to 31/12/12	2013-14 to 31/12/13	2014-15 to 31/12/14	2015-16 to 31/12/15	2016-17 to 31/12/16	% Change from 2015-16	2016-17 as a % of Total
United Kingdom	24,134	23,928	23,924	22,501	21,800	-3.1%	21.1%
Germany, Fed Republic of	14,719	15,940	15,217	15,141	15,694	3.7%	15.2%
France	13,815	14,988	13,338	12,255	12,308	0.4%	11.9%
Korea, South	16,844	14,907	12,160	11,139	10,968	-1.5%	10.6%
Taiwan	17,968	15,703	12,960	11,089	9,947	-10.3%	9.6%
Italy	9,078	9,665	8,475	6,747	6,396	-5.2%	6.2%
Japan	4,732	4,859	4,938	5,633	5,097	-9.5%	4.9%
Canada	4,385	4,173	4,232	4,333	4,084	-5.7%	4.0%
Ireland, Republic of	10,239	6,660	4,074	3,380	3,897	15.3%	3.8%
Netherlands, Kingdom of The	2,636	2,572	2,585	2,829	3,329	17.7%	3.2%
Sweden	3,773	3,795	3,478	3,303	2,660	-19.5%	2.6%
Hong Kong (SAR of the PRC)	4,666	5,837	4,681	3,158	2,120	-32.9%	2.1%
Belgium	1,014	1,195	1,274	1,303	1,435	10.1%	1.4%
Finland	827	925	1,036	988	1,016	2.8%	1.0%
Estonia	1,375	1,441	1,063	962	990	2.9%	1.0%
Denmark	900	1,042	947	1,000	973	-2.7%	0.9%
Norway	283	334	313	323	308	-4.6%	0.3%
Malta	62	51	63	50	57	14.0%	0.1%
Cyprus	55	54	49	31	39	25.8%	0.0%
Not Specified	< 5	< 5		< 5		-100.0%	
Total	131,506	128,070	114,807	106,167	103,118	-2.9%	100.0%

Note: Further information on statistical tables presented by citizenship country can be found on page 1 under 'About this report'

2.08 Number of first Working Holiday (subclass 417) visa applications granted in 2016-17 to 31 December 2016 by citizenship country - comparison with the previous four financial years

Citizenship Country	2012-13 to 31/12/12	2013-14 to 31/12/13	2014-15 to 31/12/14	2015-16 to 31/12/15	2016-17 to 31/12/16	% Change from 2015-16	2016-17 as a % of Total
United Kingdom	20,385	19,406	19,239	18,019	17,821	-1.1%	20.8%
Germany, Fed Republic of	13,837	15,008	14,218	14,114	14,776	4.7%	17.3%
France	12,611	13,365	11,603	10,522	10,801	2.7%	12.6%
Korea, South	14,181	11,917	9,560	9,106	9,049	-0.6%	10.6%
Taiwan	14,921	10,194	8,193	7,478	6,267	-16.2%	7.3%
Italy	8,204	7,900	6,500	5,095	5,233	2.7%	6.1%
Japan	3,894	3,855	3,953	4,526	4,030	-11.0%	4.7%
Canada	4,058	3,802	3,810	3,900	3,654	-6.3%	4.3%
Ireland, Republic of	6,504	3,584	2,584	2,500	3,048	21.9%	3.6%
Netherlands, Kingdom of The	2,467	2,344	2,305	2,545	3,035	19.3%	3.5%
Sweden	3,558	3,542	3,133	3,002	2,372	-21.0%	2.8%
Hong Kong (SAR of the PRC)	3,875	4,437	3,317	2,143	1,391	-35.1%	1.6%
Belgium	934	1,110	1,144	1,150	1,287	11.9%	1.5%
Denmark	838	988	883	918	919	0.1%	1.1%
Finland	752	840	933	845	912	7.9%	1.1%
Estonia	995	938	621	611	670	9.7%	0.8%
Norway	272	318	292	309	287	-7.1%	0.3%
Malta	53	43	55	38	53	39.5%	0.1%
Cyprus	55	48	31	24	36	50.0%	0.0%
Not Specified	< 5	< 5		< 5		-100.0%	
Total							

Note: Further information on statistical tables presented by citizenship country can be found on page 1 under 'About this report'

2 Granted

2.09 Number of second Working Holiday (subclass 417) visa applications granted in 2016-17 to 31 December 2016 by citizenship country - comparison with the previous four financial years

Citizenship Country	2012-13 to 31/12/12	2013-14 to 31/12/13	2014-15 to 31/12/14	2015-16 to 31/12/15	2016-17 to 31/12/16	% Change from 2015-16	2016-17 as a % of Total
United Kingdom	3,749	4,522	4,685	4,482	3,979	-11.2%	22.8%
Taiwan	3,047	5,509	4,767	3,611	3,680	1.9%	21.1%
Korea, South	2,663	2,990	2,600	2,033	1,919	-5.6%	11.0%
France	1,204	1,623	1,735	1,733	1,507	-13.0%	8.6%
Italy	874	1,765	1,975	1,652	1,163	-29.6%	6.7%
Japan	838	1,004	985	1,107	1,067	-3.6%	6.1%
Germany, Fed Republic of	882	932	999	1,027	918	-10.6%	5.3%
Ireland, Republic of	3,735	3,076	1,490	880	849	-3.5%	4.9%
Hong Kong (SAR of the PRC)	791	1,400	1,364	1,015	729	-28.2%	4.2%
Canada	327	371	422	433	430	-0.7%	2.5%
Estonia	380	503	442	351	320	-8.8%	1.8%
Netherlands, Kingdom of The	169	228	280	284	294	3.5%	1.7%
Sweden	215	253	345	301	288	-4.3%	1.6%
Belgium	80	85	130	153	148	-3.3%	0.8%
Finland	75	85	103	143	104	-27.3%	0.6%
Denmark	62	54	64	82	54	-34.1%	0.3%
Norway	11	16	21	14	21	50.0%	0.1%
Malta	9	8	8	12	< 5	-66.7%	0.0%
Cyprus		6	18	7	< 5	-57.1%	0.0%
Total	19,111	24,430	22,433	19,320	17,477	-9.5%	100.0%

Note: Further information on statistical tables presented by citizenship country can be found on page 1 under 'About this report'

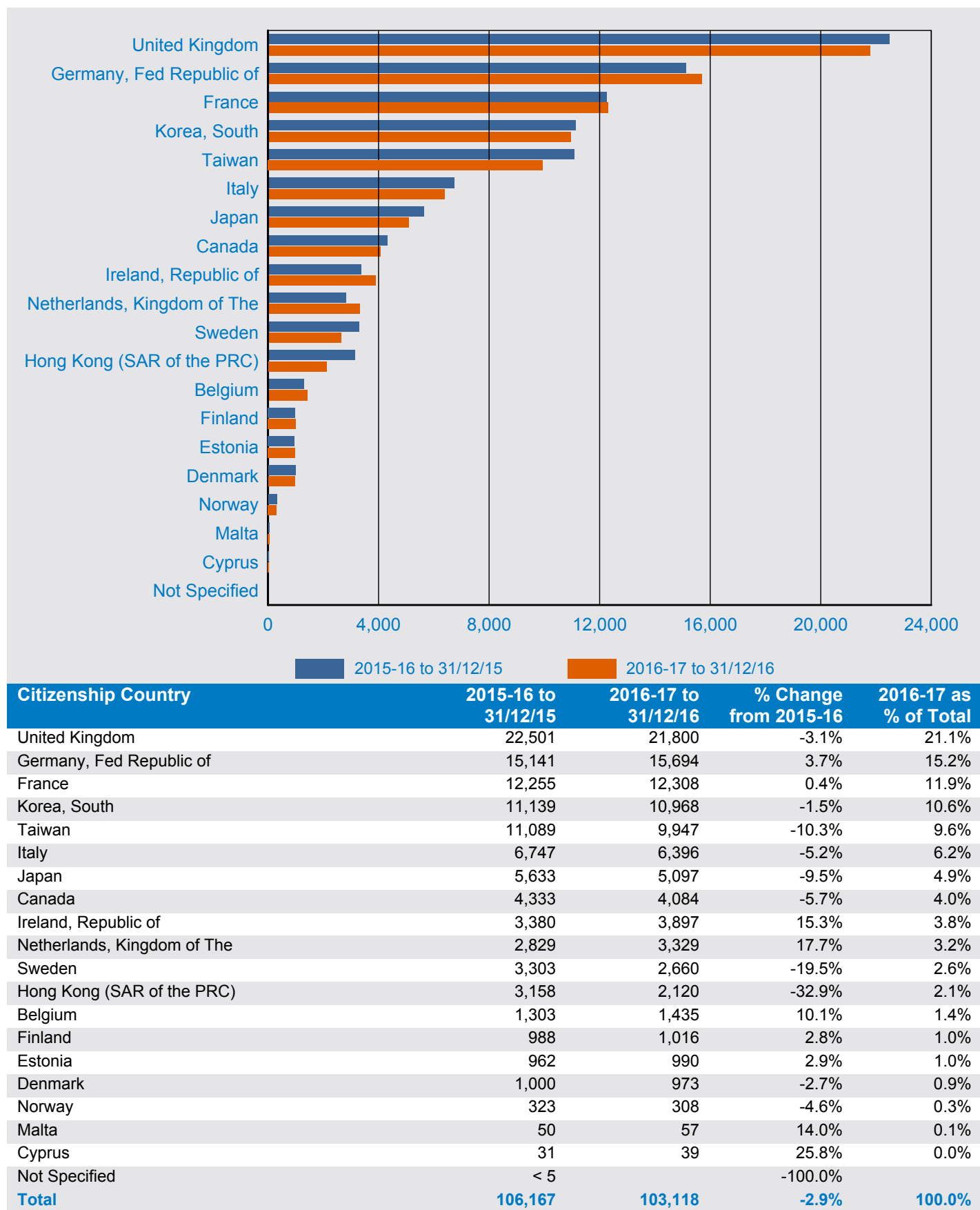
2.10 Number of Work and Holiday (subclass 462) visa applications granted in 2016-17 to 31 December 2016 by citizenship country - comparison with the previous four financial years

Citizenship Country	2012-13 to 31/12/12	2013-14 to 31/12/13	2014-15 to 31/12/14	2015-16 to 31/12/15	2016-17 to 31/12/16	% Change from 2015-16	2016-17 as a % of Total
United States of America	3,487	3,677	4,001	4,364	4,096	-6.1%	33.5%
China, Peoples Republic of (excl SARs)	na	na	na	2,866	2,911	1.6%	23.8%
Chile	381	458	538	864	1,501	73.7%	12.3%
Indonesia	na	210	118	244	830	240.2%	6.8%
Argentina	240	281	500	700	700	0.0%	5.7%
Spain	na	na	< 5	504	596	18.3%	4.9%
Israel	na	na	na	na	500		4.1%
Thailand	389	411	371	500	394	-21.2%	3.2%
Poland			130	200	200	0.0%	1.6%
Portugal	na	na	na	109	162	48.6%	1.3%
Malaysia	100	92	100	100	100	0.0%	0.8%
Turkey	41	97	91	91	99	8.8%	0.8%
Uruguay	na	27	25	40	53	32.5%	0.4%
Slovakia	na	na	na	na	49		0.4%
Slovenia	na	na	na	na	22		0.2%
Bangladesh	7	8		< 5	< 5	300.0%	0.0%
Not Specified	< 5		< 5				
Total	4,646	5,261	5,879	10,583	12,217	15.4%	100.0%

Note: Further information on statistical tables presented by citizenship country can be found on page 1 under 'About this report'

2 Granted

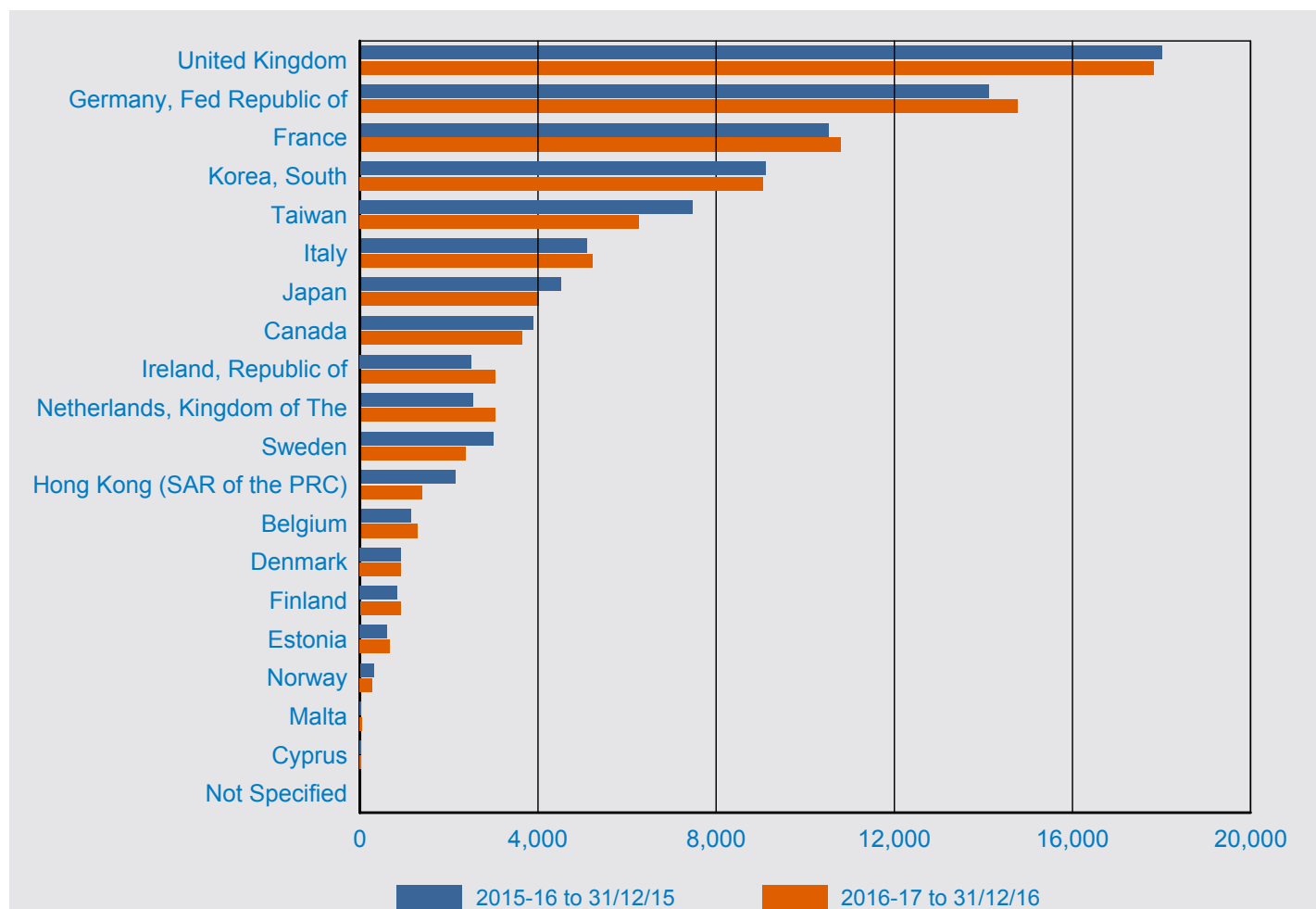
2.11 Total number of Working Holiday (subclass 417) visa applications granted in 2016-17 to 31 December 2016 by citizenship country - comparison with the previous financial year



Note: Further information on statistical tables presented by citizenship country can be found on page 1 under 'About this report'

2 Granted

2.12 Number of first Working Holiday (subclass 417) visa applications granted in 2016-17 to 31 December 2016 by citizenship country - comparison with the previous financial year

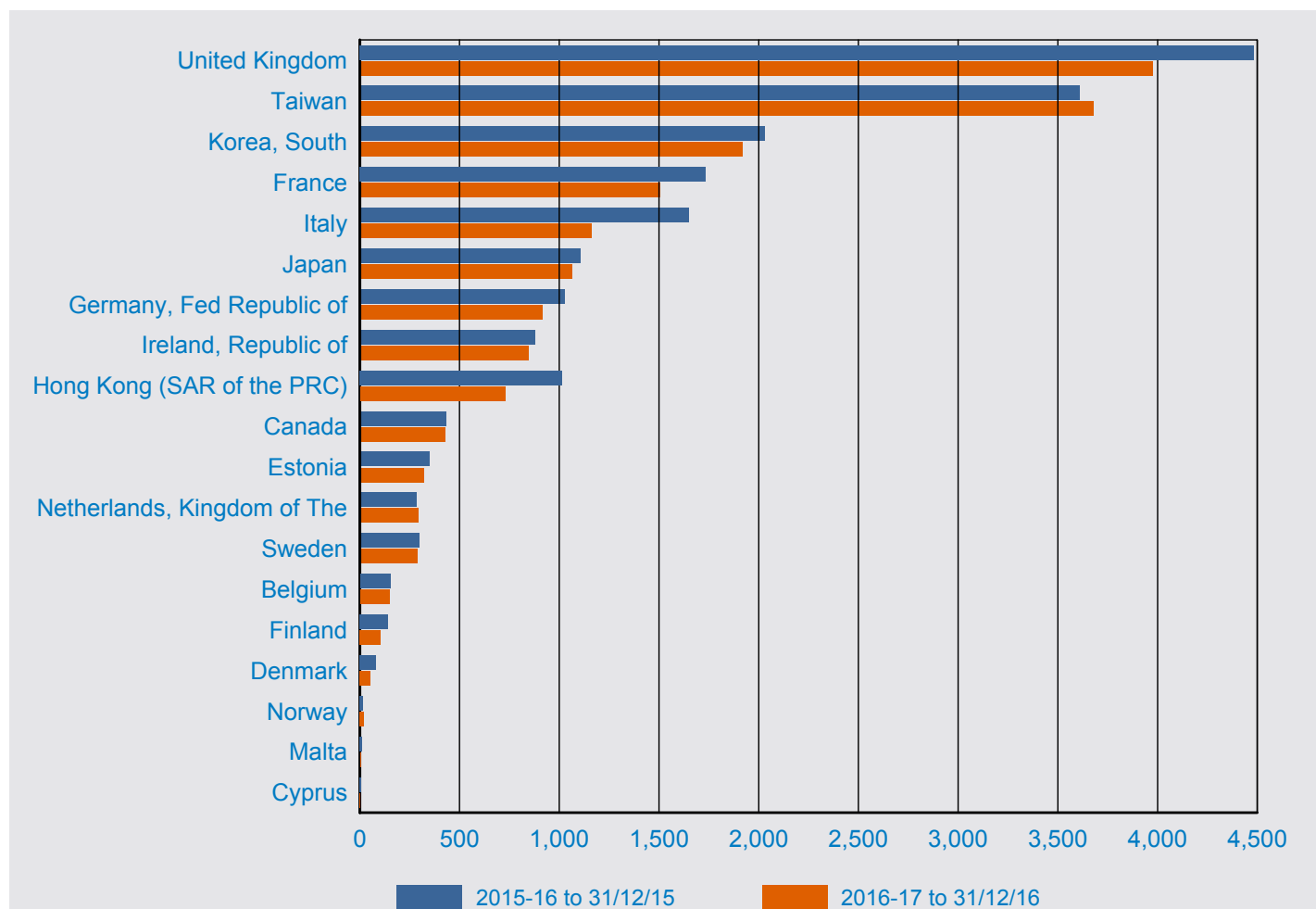


Citizenship Country	2015-16 to 31/12/15	2016-17 to 31/12/16	% Change from 2015-16	2016-17 as % of Total
United Kingdom	18,019	17,821	-1.1%	20.8%
Germany, Fed Republic of	14,114	14,776	4.7%	17.3%
France	10,522	10,801	2.7%	12.6%
Korea, South	9,106	9,049	-0.6%	10.6%
Taiwan	7,478	6,267	-16.2%	7.3%
Italy	5,095	5,233	2.7%	6.1%
Japan	4,526	4,030	-11.0%	4.7%
Canada	3,900	3,654	-6.3%	4.3%
Ireland, Republic of	2,500	3,048	21.9%	3.6%
Netherlands, Kingdom of The	2,545	3,035	19.3%	3.5%
Sweden	3,002	2,372	-21.0%	2.8%
Hong Kong (SAR of the PRC)	2,143	1,391	-35.1%	1.6%
Belgium	1,150	1,287	11.9%	1.5%
Denmark	918	919	0.1%	1.1%
Finland	845	912	7.9%	1.1%
Estonia	611	670	9.7%	0.8%
Norway	309	287	-7.1%	0.3%
Malta	38	53	39.5%	0.1%
Cyprus	24	36	50.0%	0.0%
Not Specified	< 5	< 5	-100.0%	
Total	86,847	85,641	-1.4%	100.0%

Note: Further information on statistical tables presented by citizenship country can be found on page 1 under 'About this report'

2 Granted

2.13 Number of second Working Holiday (subclass 417) visa applications granted in 2016-17 to 31 December 2016 by citizenship country - comparison with the previous financial year

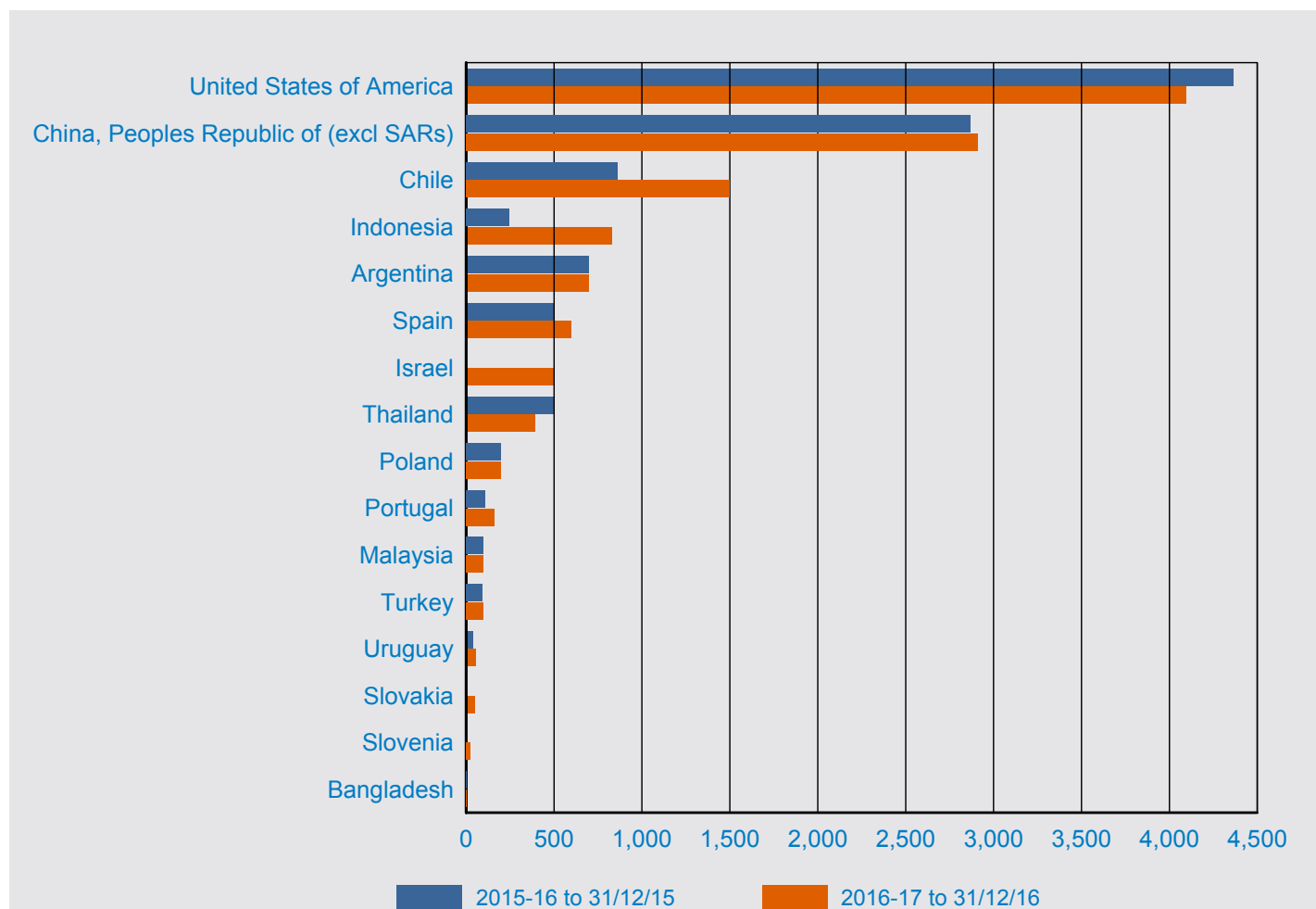


Citizenship Country	2015-16 to 31/12/15	2016-17 to 31/12/16	% Change from 2015-16	2016-17 as % of Total
United Kingdom	4,482	3,979	-11.2%	22.8%
Taiwan	3,611	3,680	1.9%	21.1%
Korea, South	2,033	1,919	-5.6%	11.0%
France	1,733	1,507	-13.0%	8.6%
Italy	1,652	1,163	-29.6%	6.7%
Japan	1,107	1,067	-3.6%	6.1%
Germany, Fed Republic of	1,027	918	-10.6%	5.3%
Ireland, Republic of	880	849	-3.5%	4.9%
Hong Kong (SAR of the PRC)	1,015	729	-28.2%	4.2%
Canada	433	430	-0.7%	2.5%
Estonia	351	320	-8.8%	1.8%
Netherlands, Kingdom of The	284	294	3.5%	1.7%
Sweden	301	288	-4.3%	1.6%
Belgium	153	148	-3.3%	0.8%
Finland	143	104	-27.3%	0.6%
Denmark	82	54	-34.1%	0.3%
Norway	14	21	50.0%	0.1%
Malta	12	< 5	-66.7%	0.0%
Cyprus	7	< 5	-57.1%	0.0%
Total	19,320	17,477	-9.5%	100.0%

Note: Further information on statistical tables presented by citizenship country can be found on page 1 under 'About this report'

2 Granted

2.14 Number of Work and Holiday (subclass 462) visa applications granted in 2016-17 to 31 December 2016 by citizenship country - comparison with the previous financial year

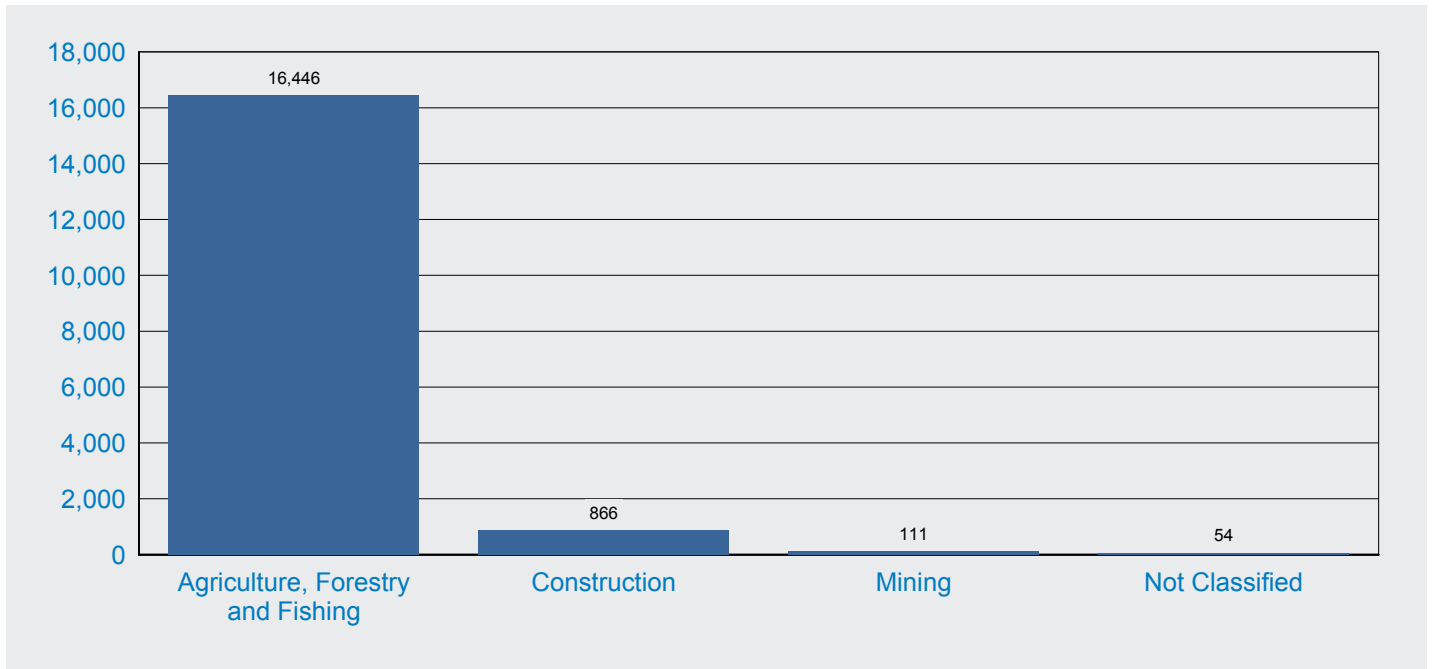


Citizenship Country	2015-16 to 31/12/15	2016-17 to 31/12/16	% Change from 2015-16	2016-17 as % of Total
United States of America	4,364	4,096	-6.1%	33.5%
China, Peoples Republic of (excl SARs)	2,866	2,911	1.6%	23.8%
Chile	864	1,501	73.7%	12.3%
Indonesia	244	830	240.2%	6.8%
Argentina	700	700	0.0%	5.7%
Spain	504	596	18.3%	4.9%
Israel	na	500		4.1%
Thailand	500	394	-21.2%	3.2%
Poland	200	200	0.0%	1.6%
Portugal	109	162	48.6%	1.3%
Malaysia	100	100	0.0%	0.8%
Turkey	91	99	8.8%	0.8%
Uruguay	40	53	32.5%	0.4%
Slovakia	na	49		0.4%
Slovenia	na	22		0.2%
Bangladesh	< 5	< 5	300.0%	0.0%
Total	10,583	12,217	15.4%	100.0%

Note: Further information on statistical tables presented by citizenship country can be found on page 1 under 'About this report'

2 Granted

2.15 Second Working Holiday (subclass 417) visa applications granted in 2016-17 to 31 December 2016 by employer industry



This page is intentionally left blank.

3 Grant Rate

For this section, grant rates have been shown.

A grant rate is defined as:

$$\frac{\text{Number of grants}}{\text{Number of decisions}} \times 100$$

where the number of decisions equals the number of grants plus the number of refusals.

3 Grant rate

3.01 Grant rate of Working Holiday Maker visa applications decided in the 6 month period between 1 July 2016 and 31 December 2016 by visa type and visa subclass - comparison with previous four periods

Visa Subclass	01/07/14 to 31/12/14	01/01/15 to 30/06/15	01/07/15 to 31/12/15	01/01/16 to 30/06/16	01/07/16 to 31/12/16
417 Working Holiday					
First visa	99.4%	99.1%	99.2%	99.3%	99.3%
Second visa	96.1%	95.7%	97.3%	96.3%	96.3%
All 417 Working Holiday	98.7%	98.5%	98.9%	98.7%	98.7%
462 Work and Holiday					
Standard	98.3%	98.2%	98.6%	98.4%	97.8%
All Working Holiday Maker	98.7%	98.4%	98.8%	98.7%	98.6%

3 Grant rate

3.02 Grant rate for Working Holiday (subclass 417) visa applications decided in the 6 month period between 1 July 2016 and 31 December 2016 by citizenship country - comparison with previous four periods

Citizenship Country	01/07/14 to 31/12/14	01/01/15 to 30/06/15	01/07/15 to 31/12/15	01/01/16 to 30/06/16	01/07/16 to 31/12/16
subclass 417 first visa					
United Kingdom	99.5%	99.3%	99.2%	99.2%	99.0%
Germany, Fed Republic of	99.8%	99.8%	99.8%	99.7%	99.9%
France	99.7%	99.6%	99.6%	99.6%	99.7%
Korea, South	98.9%	98.1%	98.1%	98.6%	97.8%
Taiwan	99.0%	99.0%	98.5%	98.6%	98.5%
Italy	99.7%	99.4%	99.6%	99.3%	99.7%
Japan	99.4%	99.5%	99.7%	99.7%	99.7%
Canada	99.4%	99.4%	99.6%	99.4%	99.5%
Ireland, Republic of	99.6%	99.7%	99.5%	99.6%	99.6%
Netherlands, Kingdom of The	99.6%	99.5%	99.7%	99.6%	99.8%
Sweden	99.9%	99.3%	99.7%	99.6%	99.4%
Hong Kong (SAR of the PRC)	95.7%	96.1%	94.2%	96.9%	95.2%
Belgium	99.8%	99.6%	99.4%	99.6%	99.9%
Denmark	99.8%	99.4%	99.7%	99.8%	99.6%
Finland	99.8%	99.8%	99.8%	99.3%	100.0%
Estonia	98.4%	95.9%	98.7%	98.9%	99.7%
Norway	99.6%	99.4%	99.6%	98.9%	98.6%
Malta	100.0%	100.0%	100.0%	100.0%	100.0%
Cyprus	100.0%	100.0%	96.0%	100.0%	100.0%
Not Specified	00.0%	60.0%	66.6%	50.0%	
All subclass 417 first visa	99.4%	99.1%	99.2%	99.3%	99.3%
subclass 417 second visa					
United Kingdom	97.0%	95.8%	97.3%	96.4%	96.2%
Taiwan	95.5%	96.7%	97.8%	97.0%	96.8%
Korea, South	93.9%	94.5%	97.1%	95.8%	95.9%
France	95.9%	94.1%	96.3%	93.8%	96.3%
Italy	98.1%	95.8%	98.0%	97.7%	95.9%
Japan	96.5%	96.1%	97.2%	97.9%	97.1%
Germany, Fed Republic of	96.5%	94.6%	97.4%	95.1%	95.0%
Ireland, Republic of	97.3%	95.4%	96.1%	96.2%	97.1%
Hong Kong (SAR of the PRC)	93.4%	95.4%	96.5%	96.6%	94.5%
Canada	97.2%	94.4%	97.3%	95.1%	95.9%
Estonia	95.4%	94.7%	96.6%	94.9%	97.5%
Netherlands, Kingdom of The	98.2%	96.6%	97.9%	94.4%	95.7%
Sweden	98.5%	98.9%	98.3%	93.2%	98.2%
Belgium	97.0%	97.1%	98.0%	96.1%	97.3%
Finland	97.1%	96.2%	99.3%	92.9%	95.4%
Denmark	91.4%	94.4%	97.6%	92.6%	88.5%
Norway	100.0%	89.4%	93.3%	100.0%	100.0%
Cyprus	94.7%	100.0%	70.0%	100.0%	60.0%
Malta	100.0%	100.0%	100.0%	100.0%	100.0%
Not Specified	00.0%		00.0%	00.0%	
All subclass 417 second visa	96.1%	95.7%	97.3%	96.3%	96.3%
All 417 Working Holiday	98.7%	98.5%	98.9%	98.7%	98.7%

Note: Further information on statistical tables presented by citizenship country can be found on page 1 under 'About this report'

3 Grant rate

3.03 Grant rate for Work and Holiday (subclass 462) visa applications decided in the 6 month period between 1 July 2016 and 31 December 2016 by citizenship country - comparison with previous four periods

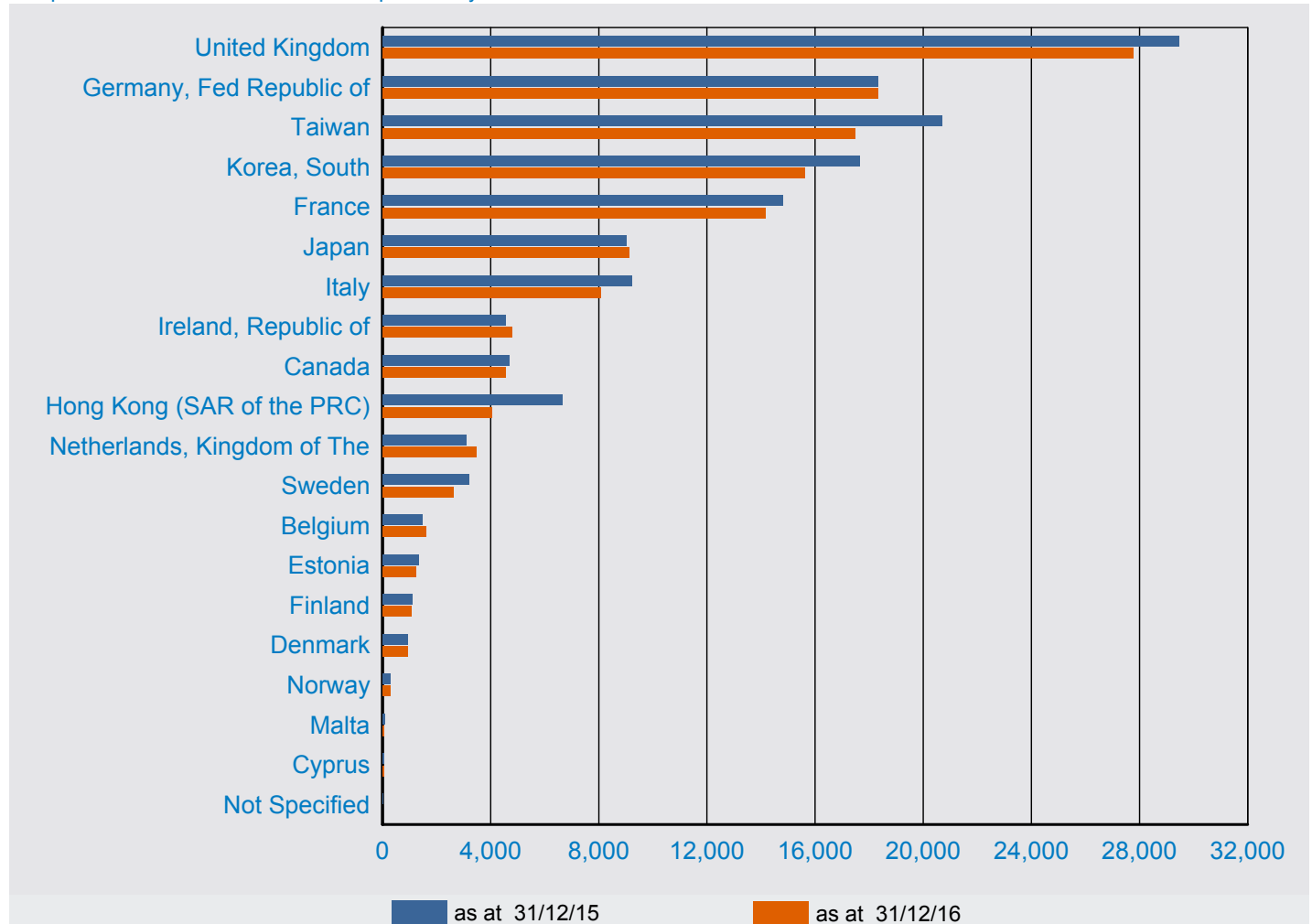
Citizenship Country	01/07/14 to 31/12/14	01/01/15 to 30/06/15	01/07/15 to 31/12/15	01/01/16 to 30/06/16	01/07/16 to 31/12/16
United States of America	99.1%	98.8%	99.1%	99.2%	98.7%
China, Peoples Republic of (excl SARs)	na	na	99.0%	98.0%	98.1%
Chile	99.8%	99.5%	99.7%	99.6%	98.8%
Indonesia	92.1%	96.5%	98.7%	99.4%	99.5%
Argentina	96.7%	na	96.5%	na	96.5%
Spain	100.0%	96.2%	97.6%	00.0%	98.0%
Israel	na	na	na	95.7%	92.2%
Thailand	98.6%	95.9%	97.6%		96.8%
Poland	98.4%	89.7%	94.7%		95.2%
Portugal		96.4%	92.3%	94.7%	97.5%
Malaysia	100.0%		100.0%		96.1%
Turkey	93.8%	81.8%	96.8%	100.0%	100.0%
Uruguay	100.0%	100.0%	100.0%	100.0%	100.0%
Slovakia	na	na	na	100.0%	98.0%
Bangladesh	00.0%	70.9%	10.0%	36.8%	09.3%
Slovenia	na	na	na	97.3%	100.0%
Not Specified	100.0%			00.0%	
All 462 Work and Holiday	98.3%	98.2%	98.6%	98.4%	97.8%

Note: Further information on statistical tables presented by citizenship country can be found on page 1 under 'About this report'

4 Visa Holders in Australia

4 Visa holders in Australia

4.01 Total number of Working Holiday (subclass 417) visa holders in Australia as at 31 December 2016 by citizenship country - comparison with the same date in the previous year

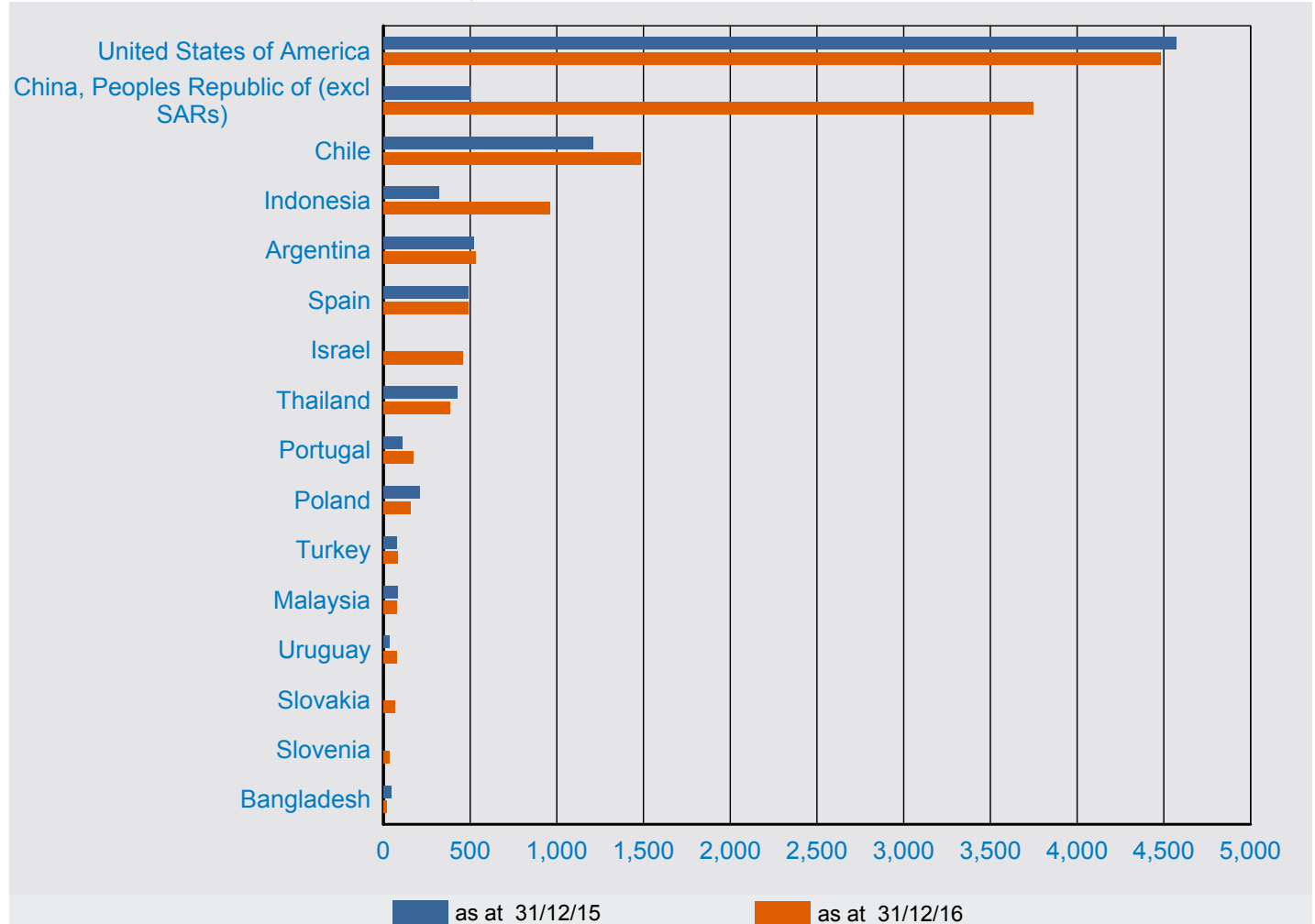


Citizenship Country	31/12/15	31/12/16	% Change from 31/12/15	31/12/16 as % of Total
United Kingdom	29,472	27,766	-5.8%	20.5%
Germany, Fed Republic of	18,332	18,338	0.0%	13.6%
Taiwan	20,707	17,493	-15.5%	12.9%
Korea, South	17,637	15,624	-11.4%	11.5%
France	14,809	14,157	-4.4%	10.5%
Japan	9,018	9,107	1.0%	6.7%
Italy	9,217	8,074	-12.4%	6.0%
Ireland, Republic of	4,557	4,801	5.4%	3.5%
Canada	4,697	4,533	-3.5%	3.4%
Hong Kong (SAR of the PRC)	6,648	4,044	-39.2%	3.0%
Netherlands, Kingdom of The	3,092	3,486	12.7%	2.6%
Sweden	3,207	2,610	-18.6%	1.9%
Belgium	1,467	1,600	9.1%	1.2%
Estonia	1,319	1,248	-5.4%	0.9%
Finland	1,095	1,066	-2.6%	0.8%
Denmark	927	945	1.9%	0.7%
Norway	284	297	4.6%	0.2%
Malta	71	50	-29.6%	0.0%
Cyprus	42	43	2.4%	0.0%
Not Specified	< 5	< 5	-100.0%	0.0%
Total	146,601	135,282	-7.7%	100.0%

Note: Further information on statistical tables presented by citizenship country can be found on page 1 under 'About this report'

4 Visa holders in Australia

4.02 Total number of Work and Holiday (subclass 462) visa holders in Australia as at 31 December 2016 by citizenship country - comparison with the same date in the previous year



Citizenship Country	31/12/15	31/12/16	% Change from 31/12/15	31/12/16 as % of Total
United States of America	4,570	4,482	-1.9%	33.9%
China, Peoples Republic of (excl SARs)	497	3,747	653.9%	28.4%
Chile	1,210	1,485	22.7%	11.2%
Indonesia	318	957	200.9%	7.2%
Argentina	522	533	2.1%	4.0%
Spain	491	488	-0.6%	3.7%
Israel	na	460		3.5%
Thailand	424	386	-9.0%	2.9%
Portugal	108	170	57.4%	1.3%
Poland	209	155	-25.8%	1.2%
Turkey	74	81	9.5%	0.6%
Malaysia	81	75	-7.4%	0.6%
Uruguay	33	74	124.2%	0.6%
Slovakia	na	68		0.5%
Slovenia	na	36		0.3%
Bangladesh	45	16	-64.4%	0.1%
Total	8,582	13,213	54.0%	100.0%

Note: Further information on statistical tables presented by citizenship country can be found on page 1 under 'About this report'

4 Visa holders in Australia

4.03 Working Holiday Maker visa holders in Australia at 31 December 2016 by visa type and visa subclass - comparison with previous four periods

Visa Subclass	31/12/14	30/06/15	31/12/15	30/06/16	31/12/16
417 Working Holiday					
First visa	117,511	101,458	114,351	95,847	107,145
Second visa	37,088	35,434	32,250	30,909	28,137
All 417 Working Holiday	154,599	136,892	146,601	126,756	135,282
462 Work and Holiday	6,342	7,026	8,582	10,620	13,213
All Working Holiday Maker	160,941	143,918	155,183	137,376	148,495

This page is intentionally left blank.

