



Australian Government

**Department of Immigration
and Border Protection**

Working Holiday Maker visa programme report

31 December 2015

This page is left intentionally blank.

Table of Contents

About this report	1
Enquiries	1
Definition of terms	2
Background to the Working Holiday Maker programme	3
Recent developments in the Working Holiday Maker programme	7
Executive summary	8
Section 1 Lodged	11
Section 2 Granted	17
Section 3 Grant Rate	29
Section 4 Visa holders in Australia	33

This page is left intentionally blank.

About this report

This report provides monthly and programme year data on the Working Holiday Maker (WHM) visa programme administered by the Department of Immigration and Border Protection (the department). The report has been provided to assist policymakers and stakeholder organisations.

This report is published every six months, and further developments will occur over time to increase and improve information sharing about the WHM programme. Current and previous versions of the report are available on the department's website. These reports, as well as a quarterly Working Holiday Maker visa grants pivot table, are available at <http://www.border.gov.au/about/reports-publications/research-statistics/statistics/visit-australia>.

Data is sourced from several departmental visa processing and recording systems. Data can be dynamic and there can be delays in transmission of information from the department's global operations. Variations in figures between this report and previous reports can occur. Due to these issues, data from the current financial year should always be considered provisional.

Further information about the Working Holiday Maker programme is available on the department's website at:

<http://www.border.gov.au/Trav/Visa-1/417->

<http://www.border.gov.au/Trav/Visa-1/462->

Notes on statistical tables presented by citizenship country

A result of 'na' indicates that the country did not have a Working Holiday Maker arrangement with Australia during the specified period. This may be because the arrangement had not yet commenced or the arrangement is no longer in place. Refer to the table 'Australia's Working Holiday Maker visa arrangements' in the 'Background to the Working Holiday Maker visa programme' section.

A citizenship country of 'Not Specified' can result from eligible dual nationality applicants where the non-eligible nationality has been recorded for the WHM application.

Enquiries

Any comment or enquiries concerning this report should be sent to visa.reporting@border.gov.au quoting report id BR0110.

Definition of terms

Citizenship country:	The country of citizenship of the visa applicant or visa holder. Where a visa applicant or visa holder has more than one citizenship country, either the citizenship of the travel document or the citizenship nominated by the visa applicant is used.
Granted:	Unless otherwise specified, the number of visas granted includes all visa grants.
Snapshot date:	The snapshot date is a point in time at which a count is undertaken. In this report, the number of visa holders in Australia at a point in time is used.
Visa applicant:	Used to refer to clients applying for a visa.
Working Holiday Maker:	Refers collectively to both the Working Holiday (subclass 417) visa and the Work and Holiday (subclass 462) visa.

Background to the Working Holiday Maker visa programme

The Working Holiday Maker (WHM) programme's purpose is to foster closer ties and cultural exchange between Australia and partner countries, with particular emphasis on young adults. It has been in existence since 1975. Today, the WHM programme is comprised of the Working Holiday (subclass 417) and the Work and Holiday (subclass 462) visa programmes. Partner countries initially comprised a relatively small number of Commonwealth countries, but the programme has since grown to encompass 38 partner nations and regions (Hong Kong Special Administrative Region of the People's Republic of China) from across the globe.

Australia has an overarching bilateral arrangement, usually in the form of a Memorandum of Understanding, with each partner country. Of the 38 partner countries, 19 are Working Holiday (subclass 417) visa arrangements, and 19 are Work and Holiday (subclass 462) visa arrangements. The key differences between the two visas are that Work and Holiday visa arrangements generally have caps on the number of visas granted annually and additional eligibility requirements. The Work and Holiday visa arrangements that Australia has signed with Greece, Israel, Papua New Guinea and Vietnam were not in effect as at 31 December 2015. Each of these arrangements will be implemented once both Australia and the partner country have the necessary legislative and administrative systems in place. Announcements will be made on the Department's website once implementation processes are complete, enabling participants to lodge visa applications.

WHM arrangements are reciprocal in nature, providing Australians with similar opportunities overseas. In considering whether to add new WHM partner countries, the Australian Government considers a range of factors, including the ability of the prospective partner to offer reciprocity to Australians, and the strength of any cultural and people-to-people links.

Eligibility Requirements

All WHM (both Working Holiday and Work and Holiday) visa applicants must:

- be aged 18-30 at time of application
- hold a passport from an eligible partner country. A list of eligible countries is provided in the 'Australia's Working Holiday Maker Visa Arrangements' section of this report
- not be accompanied by dependent children during their stay in Australia
- meet health and character requirements
- meet financial requirements.

Work and Holiday visa applicants must meet additional requirements, including:

- functional English
- successful completion of at least two years of undergraduate university study
- a letter of home government support in association with their visa application.

Working while in Australia

All WHMs may work for the full duration of their 12 month stay in Australia, but cannot generally remain with any one employer for longer than six months (by operation of mandatory visa condition 8547).

WHM visa holders may be eligible for an extension of the six month employment limitation in certain circumstances, including:

- Visa holders who have carried out six months work as an au pair anywhere in Australia may be given approval to work for up to 6 additional months with the same employer.
- Visa holders who have carried out six months work in eligible industries in Northern Australia may be given approval to work for up to 6 additional months with the same employer. The eligible industries are aged and disability care, agriculture, forestry and fishing, construction, mining, and tourism and hospitality.

Studying while in Australia

All WHMs are entitled to study for a period of up to four months during their 12 month stay in Australia.

Background to the Working Holiday Maker visa programme - continued

Second Working Holiday

Participants are generally limited to holding only one Working Holiday visa or Work and Holiday visa in their lifetime.

However, first-time Working Holiday (subclass 417) visa holders who undertake 88 days 'specified work' in regional Australia during their stay acquire eligibility to apply for a second such visa. This provision is not currently available to Work and Holiday (subclass 462) participants.

'Specified work' includes work in the agriculture, mining and construction industries. For the purposes of second Working Holiday visa eligibility, regional Australia includes large parts of rural and regional Australia, which are identified in a list of postcodes available on the Department's website at:

<http://www.border.gov.au/Trav/Visa-1/417->.

Processing Times

The visa processing service standard for first Working Holiday (subclass 417) visa applications is that 75 per cent are finalised within six calendar days of lodgement. In the six months to 31 December 2015, 78.4 per cent of first Working Holiday visas were finalised within service standards. The service standard for second Working Holiday (subclass 417) visa applications is that 75 per cent are finalised within 21 calendar days of lodgement. In the six months to 31 December 2015, 69.6 per cent of second Working Holiday visas were finalised within service standards.

The visa processing service standard for Work and Holiday (subclass 462) online visa applications (USA nationals only) is that 75 per cent are finalised within six calendar days of lodgement. In the six months to 31 December 2015, 79.8 per cent of online Work and Holiday visa applications were finalised within service standards. The service standard for Work and Holiday (subclass 462) paper visa applications is that 75 per cent are finalised within 14 calendar days of lodgement. In the six months to 31 December 2015, 69.7 per cent of paper Work and Holiday visa applications were finalised within service standards.

Processing times can be affected by factors such as the completeness of applications lodged and additional checks performed by visa processing officers, such as those relating to health and character.

Australia's Working Holiday Maker visa arrangements

Commencement Date	Country / Region	Type of Agreement	Cap
1975	United Kingdom	Working Holiday (SC 417)	N/A
1975	Ireland	Working Holiday (SC 417)	N/A
1975	Canada	Working Holiday (SC 417)	N/A
1 December 1980	Japan	Working Holiday (SC 417)	N/A
1 July 1995	South Korea	Working Holiday (SC 417)	N/A
1 July 1996	Malta	Working Holiday (SC 417)	N/A
1 July 2000	Germany	Working Holiday (SC 417)	N/A
1 July 2001	Sweden	Working Holiday (SC 417)	N/A
1 July 2001	Norway	Working Holiday (SC 417)	N/A
1 July 2001	Denmark	Working Holiday (SC 417)	N/A
15 September 2001	Hong Kong (HKSAR of the PRC)	Working Holiday (SC 417)	N/A
1 May 2002	Finland	Working Holiday (SC 417)	N/A
1 July 2002	Cyprus	Working Holiday (SC 417)	N/A
2 January 2004	Italy	Working Holiday (SC 417)	N/A
20 February 2004	France	Working Holiday (SC 417)	N/A
1 November 2004	Taiwan	Working Holiday (SC 417)	N/A
1 November 2004	Belgium	Working Holiday (SC 417)	N/A
20 May 2005	Estonia	Working Holiday (SC 417)	N/A
1 August 2005	Thailand	Work and Holiday (SC 462)	500
1 March 2006	Chile	Work and Holiday (SC 462)	1500
1 July 2006	Netherlands	Working Holiday (SC 417)	N/A
31 March 2007	Turkey	Work and Holiday (SC 462)	100
31 October 2007	United States of America	Work and Holiday (SC 462)	N/A
1 February 2009	Malaysia	Work and Holiday (SC 462)	100
1 July 2009	Indonesia	Work and Holiday (SC 462)	1000
31 December 2010	Bangladesh	Work and Holiday (SC 462)	100
29 February 2012	Argentina	Work and Holiday (SC 462)	700
1 April 2013	Uruguay	Work and Holiday (SC 462)	200
1 August 2014	Poland	Work and Holiday (SC 462)	200
23 November 2014	Portugal	Work and Holiday (SC 462)	200
23 November 2014	Spain	Work and Holiday (SC 462)	500
21 September 2015	China (excl. SARs)	Work and Holiday (SC 462)	5000
1 January 2016	Slovak Republic	Work and Holiday (SC 462)	200
1 January 2016	Slovenia	Work and Holiday (SC 462)	200
Signed 12 October 2011	Papua New Guinea*	Work and Holiday (SC 462)	100
Signed 14 May 2014	Greece*	Work and Holiday (SC 462)	500
Signed 22 October 2014	Israel*	Work and Holiday (SC 462)	500
Signed 18 March 2015	Vietnam*	Work and Holiday (SC 462)	200

* Not yet in effect as at 31 December 2015

Countries with which Australia is currently negotiating new Work and Holiday (subclass 462) arrangements

- | | |
|------------------|--------------------|
| 1 Andorra | 12 Luxembourg |
| 2 Austria | 13 Mexico |
| 3 Brazil | 14 Monaco |
| 4 Croatia | 15 Mongolia |
| 5 Czech Republic | 16 Peru |
| 6 Ecuador | 17 Philippines |
| 7 Fiji | 18 San Marino |
| 8 Hungary | 19 Singapore |
| 9 India | 20 Solomon Islands |
| 10 Latvia | 21 Switzerland |
| 11 Lithuania | |

Recent developments in the Working Holiday Maker programme

Commencement of employment extensions for au pairs

On 21 July 2015, Working Holiday Maker visa programme requirements were simplified to make it easier for families to employ au pairs. The changes enable Working Holiday (Subclass 417) or Work and Holiday (subclass 462) visa holders who have been working as au pairs to seek an extension to work for a family for up to the full 12 month term of the visa, rather than the current limit of six months per family.

Further details are available on the Department's website at:
<http://www.border.gov.au/Trav/Work/Empl/WHM-six-months-one-employer>.

Commencement of Work and Holiday visa arrangement with China

The new Work and Holiday (subclass 462) visa arrangement between Australia and China commenced on 21 September 2015, enabling the commencement of visa grants under this arrangement.

New evidence of remuneration requirement for second Working Holiday visa applications

New legislation was introduced on 1 December 2015 requiring all applicants for a second Working Holiday visa to provide evidence of appropriate remuneration with their application. This evidence generally needs to be in the form of pay slips and will help ensure that work undertaken by Working Holiday visa holders is performed in accordance with workplace law.

Further information on these requirements is available on the Department's website at:
<http://www.border.gov.au/WorkinginAustralia/Pages/employer-obligations-and-payslip-evidence.aspx>.

Commencement of Northern Australia employment extensions initiative

From 21 November 2015, Working Holiday or Work and Holiday visa holders are now able work for 12 months with the same employer in certain industries in Northern Australia. The five industries are aged and disability care, agriculture, forestry and fishing, construction, mining, and tourism and hospitality. Working Holiday Maker visa holders are generally limited to a maximum of six months work with any one employer.

A further initiative in support of Northern Australia is expected to commence in late 2016. This initiative will enable Work and Holiday (subclass 462) visa holders to acquire a second visa if they complete three months of eligible work in the tourism, agriculture or hospitality industries in Northern Australia. Work and Holiday visa holders are currently limited to one visa in their lifetime.

Executive Summary

Key Points

- In the six months to 31 December 2015, a total of 116,750 Working Holiday Maker (WHM) (subclass 417 and subclass 462) visas were granted, a 3.3 per cent reduction compared to the corresponding period in 2014-15.
- There was a 6 per cent reduction in first Working Holiday (subclass 417) visa grants to 86,847 and a 13.9 per cent reduction in second Working Holiday visa grants to 19,320. Work and Holiday (Subclass 462) visa grants increased 80 per cent to 10,583.
- There were 155,183 WHM visa holders in Australia at 31 December 2015, a 3.6 per cent reduction compared to 31 December 2014.

1 Applications lodged

In the six months to 31 December 2015, there was a 2.2 per cent reduction in WHM visa application lodgements compared to the corresponding period in 2014-15.

There were a total of 86,995 first Working Holiday (subclass 417) visa applications, 21,902 second Working Holiday (subclass 417) visa applications, and 10,849 Work and Holiday (subclass 462) visa applications lodged in the six months to 31 December 2015.

The very high average grant rate of WHM visas (98.8 per cent - see Section 3) means the number of visas granted tends to be very close to the number of visa applications lodged during the period, noting that there can be a delay between lodgement and grant.

2 Visas granted

First Working Holiday (subclass 417) visa programme

A total of 86,847 first Working Holiday visas were granted in the six months to 31 December 2015, a 6 per cent reduction compared to the corresponding period in 2014-15.

Reductions in Working Holiday visa grant numbers may be influenced by a range of factors including changing economic conditions and seasonal variability in visa application numbers in partner countries.

The top five countries for first Working Holiday visa grants were:

- United Kingdom (down 6.3 per cent to 18,020)
- Germany (down 0.7 per cent to 14,113)
- France (down 9.3 per cent to 10,522)
- South Korea (down 4.7 per cent to 9,106)
- Taiwan (down 8.7 per cent to 7,478).

Second Working Holiday (subclass 417) visa programme

A total of 19,320 second Working Holiday visas were granted in the six months to 31 December 2015. This is a 13.9 per cent reduction compared to the corresponding period in 2014-15. This is largely the result of a flow-on effect from a reduction in first Working Holiday visa grants in 2014-15.

There is a direct but delayed flow-on relationship between the rate of first Working Holiday visa grants and the rate of second Working Holiday visa grants, which usually takes 12 to 18 months to be reflected in the data. Thus, where there has been an increase or decrease in first Working Holiday visa grants, a similar but delayed trend could be expected to flow through to second Working Holiday visa grants.

The top five countries for second Working Holiday visa grants were:

- United Kingdom (down 4.3 per cent to 4,482)
- Taiwan (down 24.3 per cent to 3,611)
- South Korea (down 21.8 per cent to 2,033)
- France (down 0.1 per cent to 1,733)
- Italy (down 16.4 per cent to 1,652).

In the six months to 31 December 2015, around 92 per cent of the second Working Holiday visa applicants indicated they engaged in agricultural work to acquire eligibility, around six per cent undertook construction work, and around one per cent undertook mining work (see Table 2.15). The employment of the remaining participants (approximately 1 per cent) has not been disaggregated.

Combined Working Holiday (subclass 417) visa programme

A total of 106,167 combined Working Holiday (first and second) visas were granted in the six months to 31 December 2015.

Executive Summary - continued

Combined Working Holiday (subclass 417) visa programme - continued

This is a 7.5 per cent reduction compared to the corresponding period in 2014-15 and is a result of the fall in both first Working Holiday visa and second Working Holiday visa applications granted.

The top five countries for combined first and second Working Holiday visa grants were:

- United Kingdom (down 5.9 per cent to 22,502)
- Germany (down 0.5 per cent to 15,140)
- France (down 8.1 per cent to 12,255)
- South Korea (down 8.4 per cent to 11,139)
- Taiwan (down 14.4 per cent to 11,089).

Work and Holiday (subclass 462) visa programme

A total of 10,583 Work and Holiday visas were granted in the six months to 31 December 2015. This is an 80 per cent increase compared to the corresponding period in 2014-15.

The top five countries for visa grants under the Work and Holiday visa programme were:

- United States of America (up 9.1 per cent to 4,364)
- China (2,866 visas granted since commencement on 21 September 2015)
- Chile (up 60.6 per cent to 864)
- Argentina (up 40 per cent to 700)
- Spain (up 500 to 504).

The popularity of the newly commenced Work and Holiday visa arrangement with China was a substantial contributor to the growth in Work and Holiday visa grants. However, there was also strong growth in visas granted to nationals of Argentina, Chile, Spain, Thailand, Indonesia and Poland. The annual visa grant limits had already been met for a number of countries only halfway into the 2015-16 programme year.

3 Grant rates

The grant rate for first Working Holiday visas for the six months to 31 December 2015 was 99.2 per cent, the grant rate for second Working Holiday visas was 97.2 per cent and the grant rate for Work and Holiday visas was 98.6 per cent.

The grant rates for WHM visas are indicative of the low risk nature of this caseload. The large proportion of online applications for this caseload also contributes to the high grant rate. A number of automated eligibility checks occur during online applications, alerting clients early in the process if they do not meet visa requirements.

4 Working Holiday Makers in Australia

Working Holiday (subclass 417) visa holders

As at 31 December 2015, there were 146,601 Working Holiday visa holders in Australia (first and second visas). This is a 5.2 per cent reduction in the number of Working Holiday visa holders in Australia compared to 31 December 2014.

Work and Holiday (subclass 462) visa holders

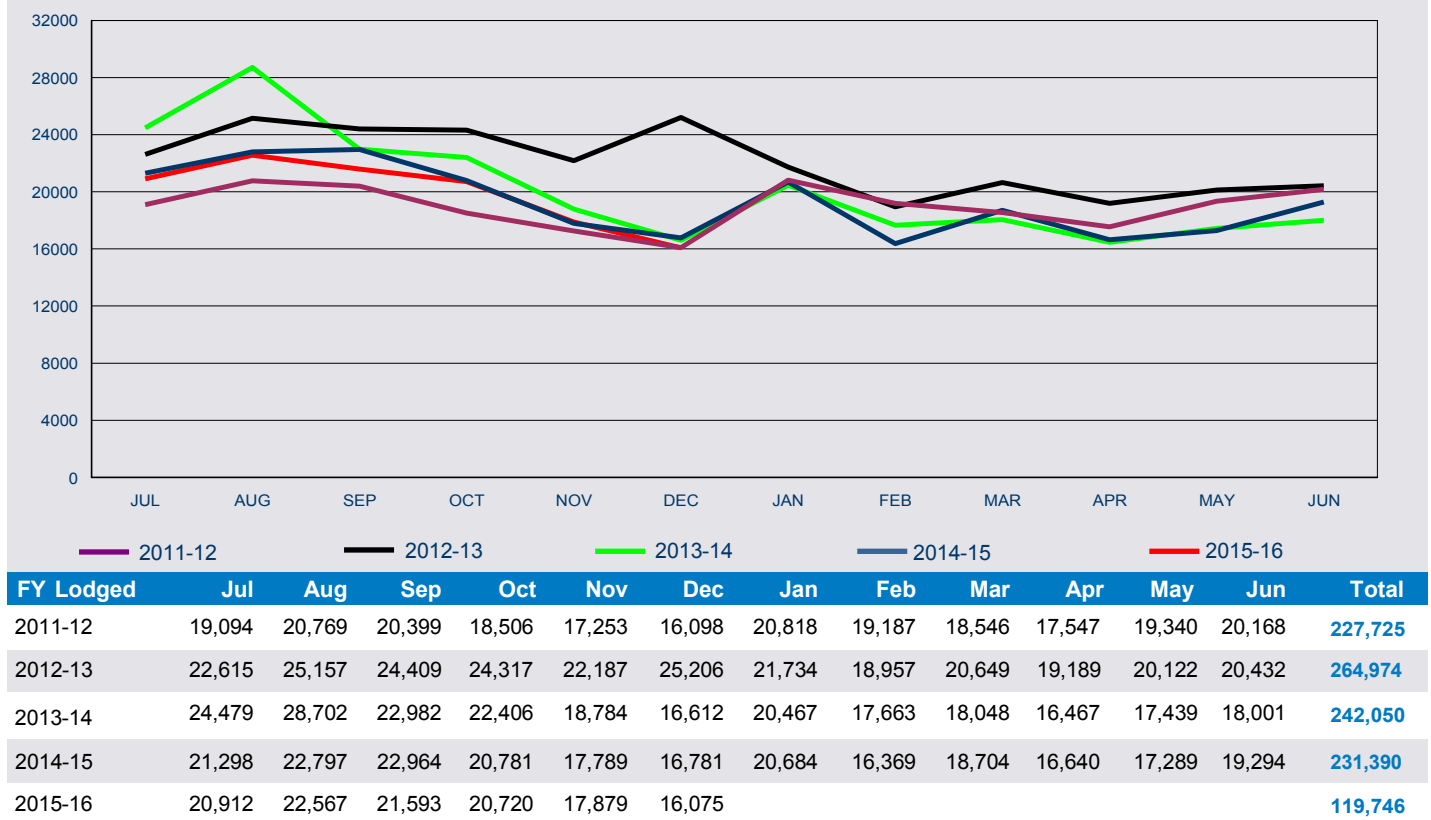
As at 31 December 2015, there were 8,582 Work and Holiday visa holders in Australia. This is a 35.3 per cent increase in the number of Work and Holiday visa holders in Australia compared to 31 December 2014.

This page is left blank intentionally.

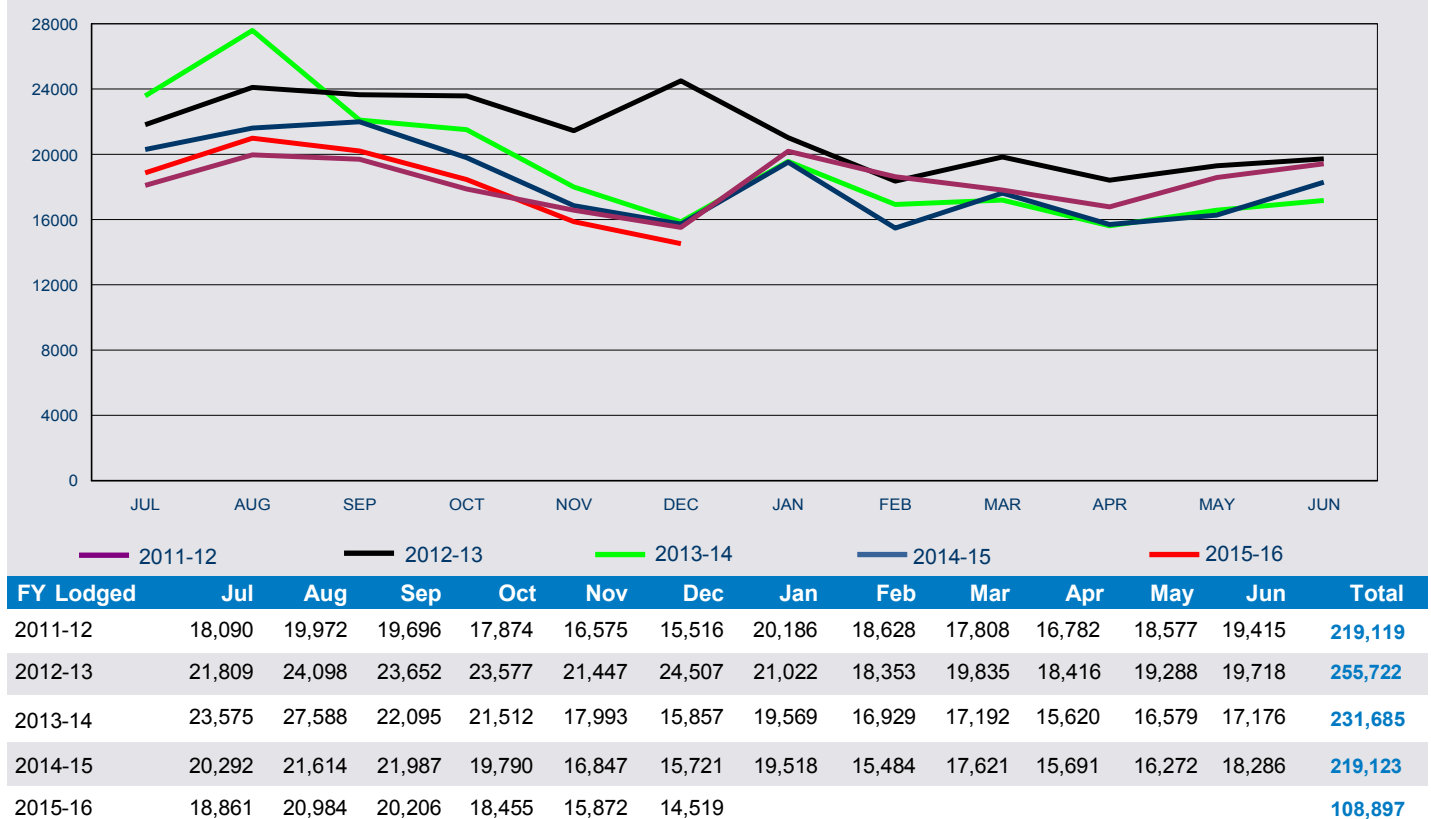
1 Lodged

1 Lodged

1.01 Total number of Working Holiday Maker visa applications lodged in 2015-16 to 31 December 2015 by month - comparison with previous four financial years

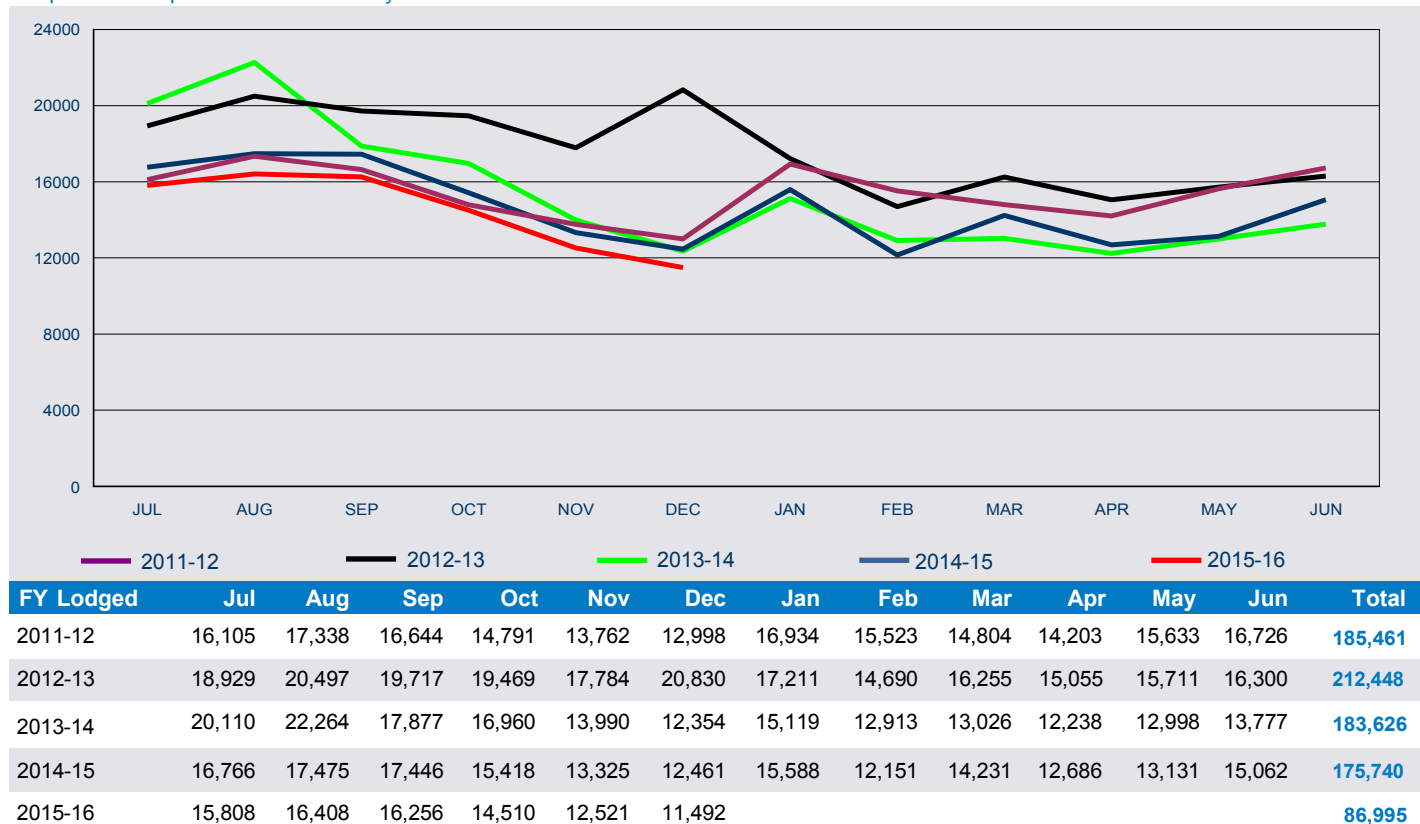


1.02 Total number of Working Holiday (subclass 417) visa applications lodged in 2015-16 to 31 December 2015 by month - comparison with previous four financial years

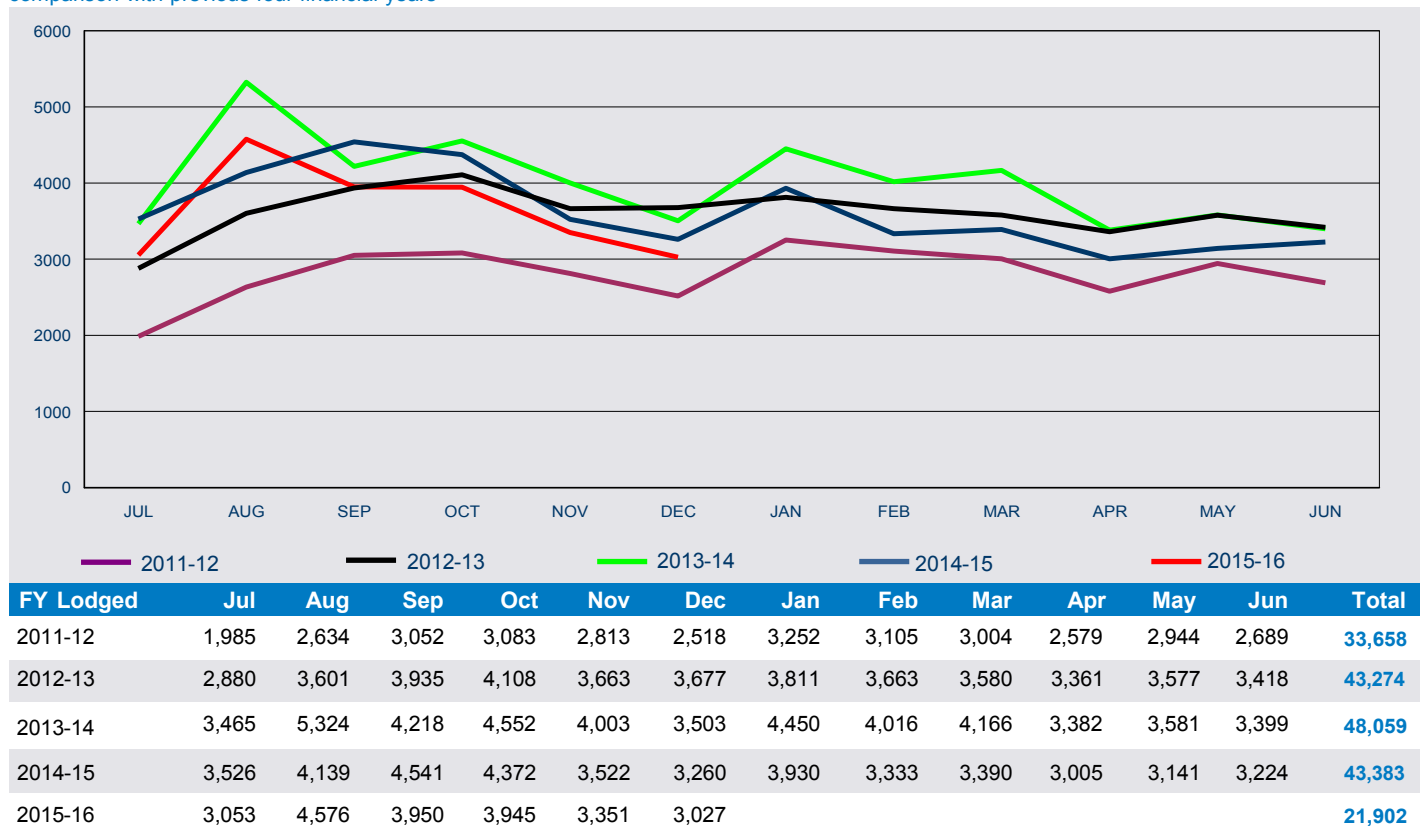


1 Lodged

1.03 Number of first Working Holiday (subclass 417) visa applications lodged in 2015-16 to 31 December 2015 by month - comparison with previous four financial years

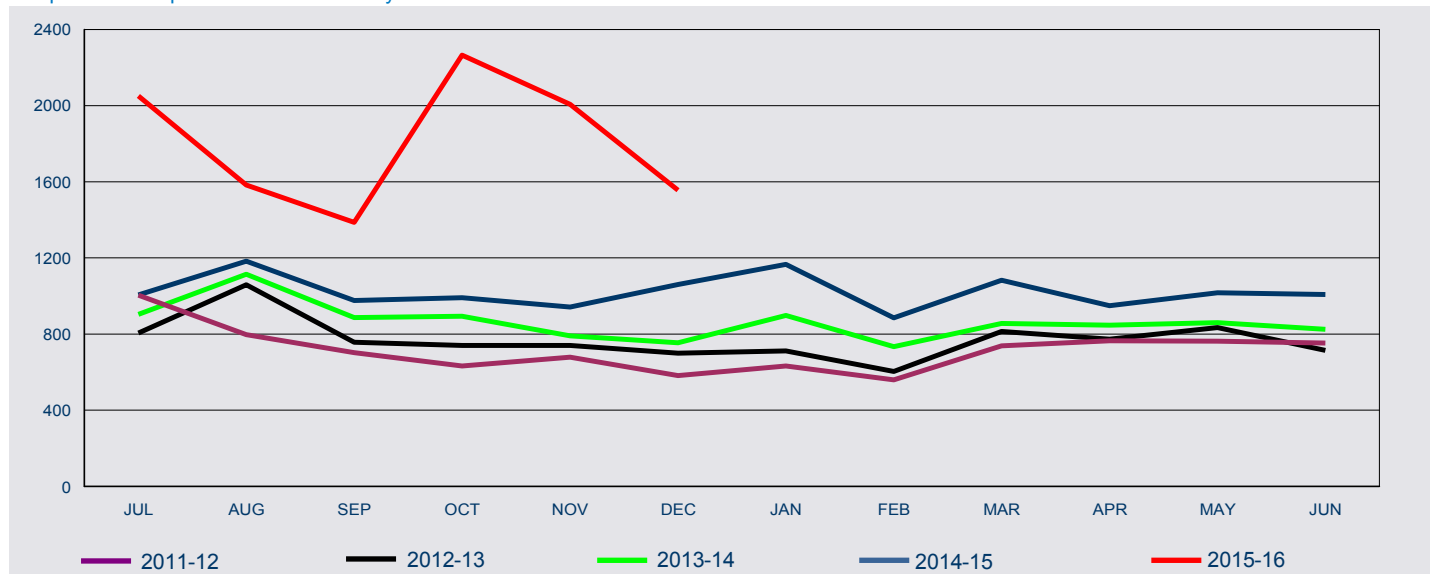


1.04 Number of second Working Holiday (subclass 417) visa applications lodged in 2015-16 to 31 December 2015 by month - comparison with previous four financial years



1 Lodged

1.05 Total number of Work and Holiday (subclass 462) visa applications lodged in 2015-16 to 31 December 2015 by month - comparison with previous four financial years



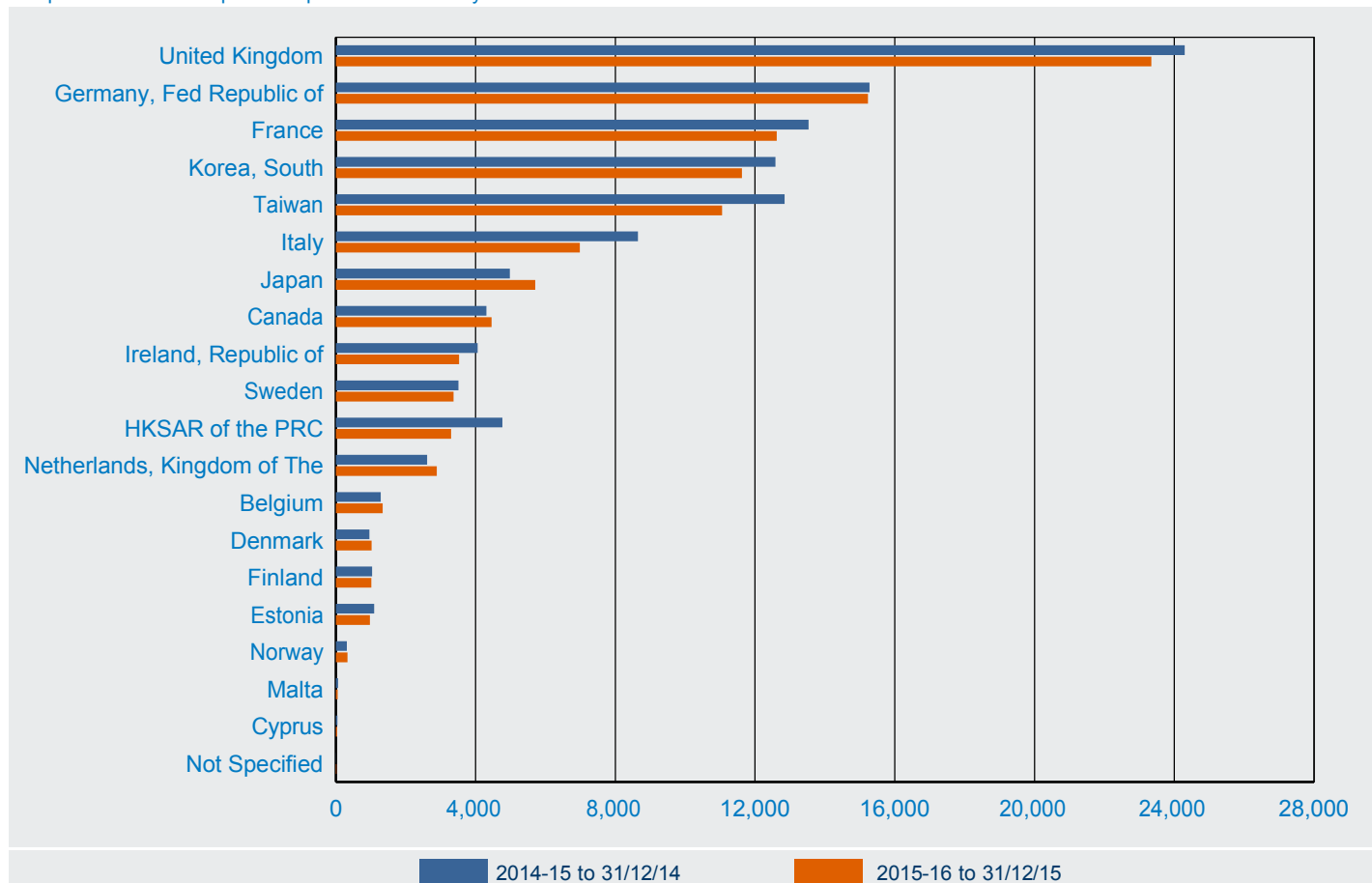
FY Lodged	Jul	Aug	Sep	Oct	Nov	Dec	Jan	Feb	Mar	Apr	May	Jun	Total
2011-12	1,004	797	703	632	678	582	632	559	738	765	763	753	8,606
2012-13	806	1,059	757	740	740	699	712	604	814	773	834	714	9,252
2013-14	904	1,114	887	894	791	755	898	734	856	847	860	825	10,365
2014-15	1,006	1,183	977	991	942	1,060	1,166	885	1,083	949	1,017	1,008	12,267
2015-16	2,051	1,583	1,387	2,265	2,007	1,556							10,849

1.06 Total number of Working Holiday Maker visa applications lodged in the 6 month period between 1 July 2015 and 31 December 2015 by visa subclass and visa type - comparison with previous four periods

Visa Subclass	01/07/13 to 31/12/13	01/01/14 to 30/06/14	01/07/14 to 31/12/14	01/01/15 to 30/06/15	01/07/15 to 31/12/15
417 Working Holiday					
First visa	103,555	80,071	92,891	82,849	86,995
Second visa	25,065	22,994	23,360	20,023	21,902
All 417 Working Holiday	128,620	103,065	116,251	102,872	108,897
462 Work and Holiday	5,345	5,020	6,159	6,108	10,849
All Working Holiday Maker	133,965	108,085	122,410	108,980	119,746

1 Lodged

1.07 Number of Working Holiday (subclass 417) visa applications lodged in 2015-16 to 31 December 2015 by citizenship country - comparison with same period in previous financial year

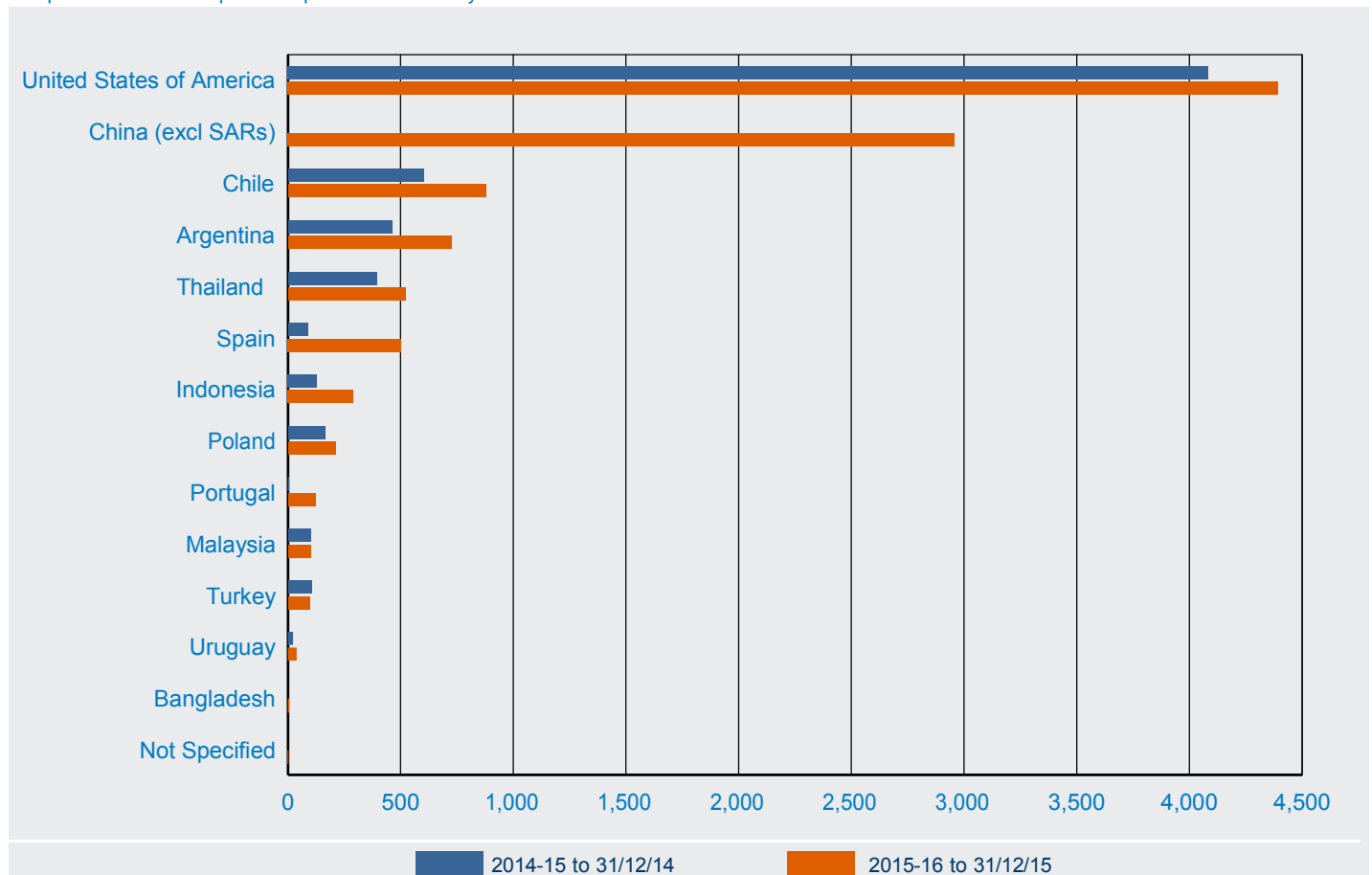


Citizenship Country	2014 15 to 31/12/14	2015 16 to 31/12/15	% Change from 2014 15	2015 16 as % of Total
United Kingdom	24,301	23,343	-3.9%	21.4%
Germany, Fed Republic of	15,276	15,231	-0.3%	14.0%
France	13,532	12,618	-6.8%	11.6%
Korea, South	12,584	11,623	-7.6%	10.7%
Taiwan	12,846	11,055	-13.9%	10.2%
Italy	8,651	6,984	-19.3%	6.4%
Japan	4,981	5,710	14.6%	5.2%
Canada	4,310	4,457	3.4%	4.1%
Ireland, Republic of	4,062	3,526	-13.2%	3.2%
Sweden	3,512	3,369	-4.1%	3.1%
HKSAR of the PRC	4,765	3,299	-30.8%	3.0%
Netherlands, Kingdom of The	2,617	2,888	10.4%	2.7%
Belgium	1,286	1,340	4.2%	1.2%
Denmark	961	1,025	6.7%	0.9%
Finland	1,036	1,014	-2.1%	0.9%
Estonia	1,097	976	-11.0%	0.9%
Norway	316	331	4.7%	0.3%
Malta	63	55	-12.7%	0.1%
Cyprus	47	36	-23.4%	0.0%
Not Specified	8	17	112.5%	0.0%
Total	116,251	108,897	-6.3%	100.0%

Note: Further information on statistical tables presented by citizenship country can be found on page 1 under 'About this report'

1 Lodged

1.08 Number of Work and Holiday (subclass 462) visa applications lodged in 2015-16 to 31 December 2015 by citizenship country - comparison with same period in previous financial year



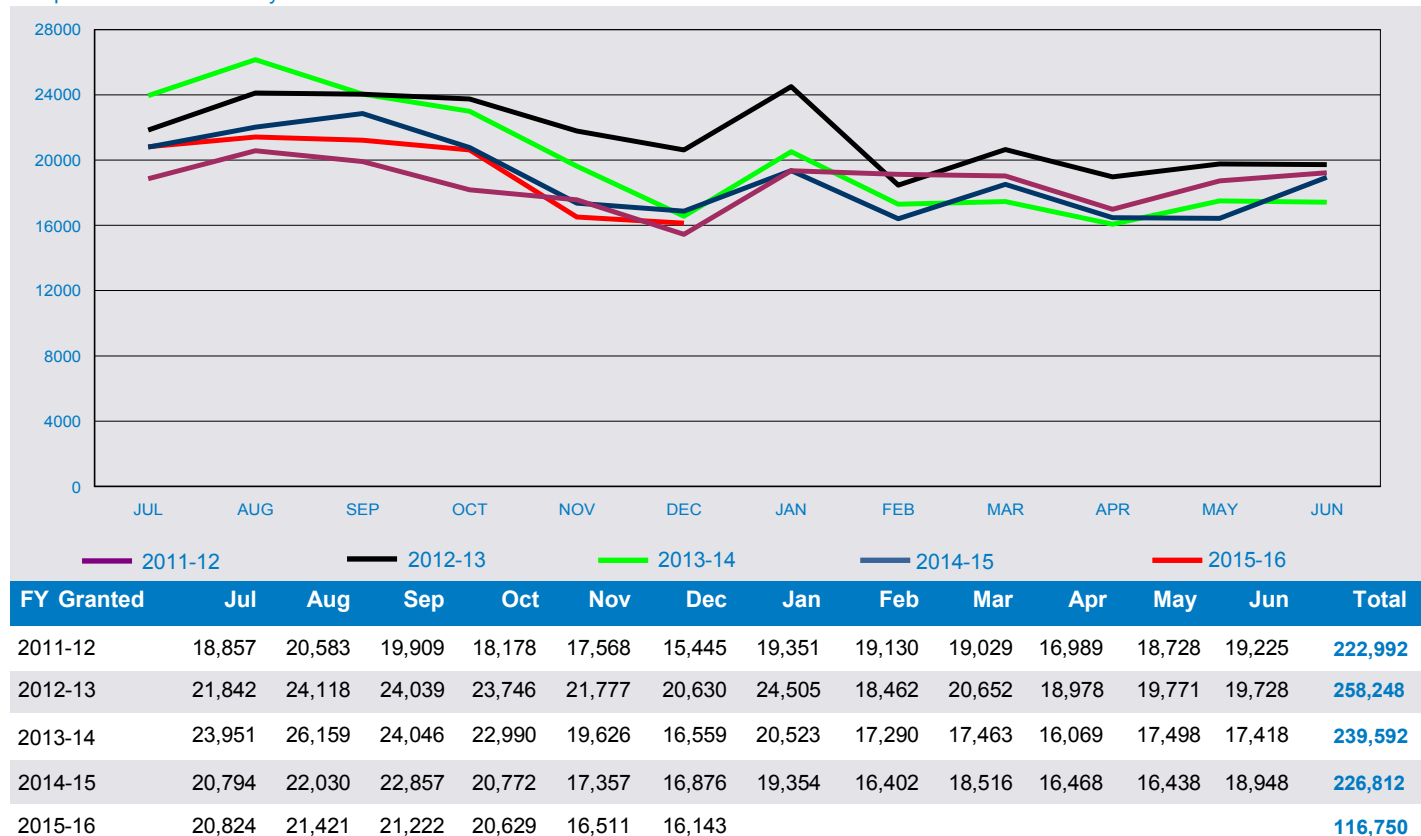
Citizenship Country	2014 15 to 31/12/14	2015 16 to 31/12/15	% Change from 2014 15	2015 16 as % of Total
United States of America	4,083	4 393	7.6%	40.5%
China (excl SARs)	na	2 958		27.3%
Chile	602	880	46.2%	8.1%
Argentina	463	726	56.8%	6.7%
Thailand	394	522	32.5%	4.8%
Spain	89	503	465.2%	4.6%
Indonesia	129	290	124.8%	2.7%
Poland	165	212	28.5%	2.0%
Portugal	6	123	1950.0%	1.1%
Malaysia	100	100	0.0%	0.9%
Turkey	106	98	-7.5%	0.9%
Uruguay	22	38	72.7%	0.4%
Bangladesh		5		0.0%
Not Specified		<5		0.0%
Total	6,159	10,849	76.1%	100.0%

Note: Further information on statistical tables presented by citizenship country can be found on page 1 under 'About this report'

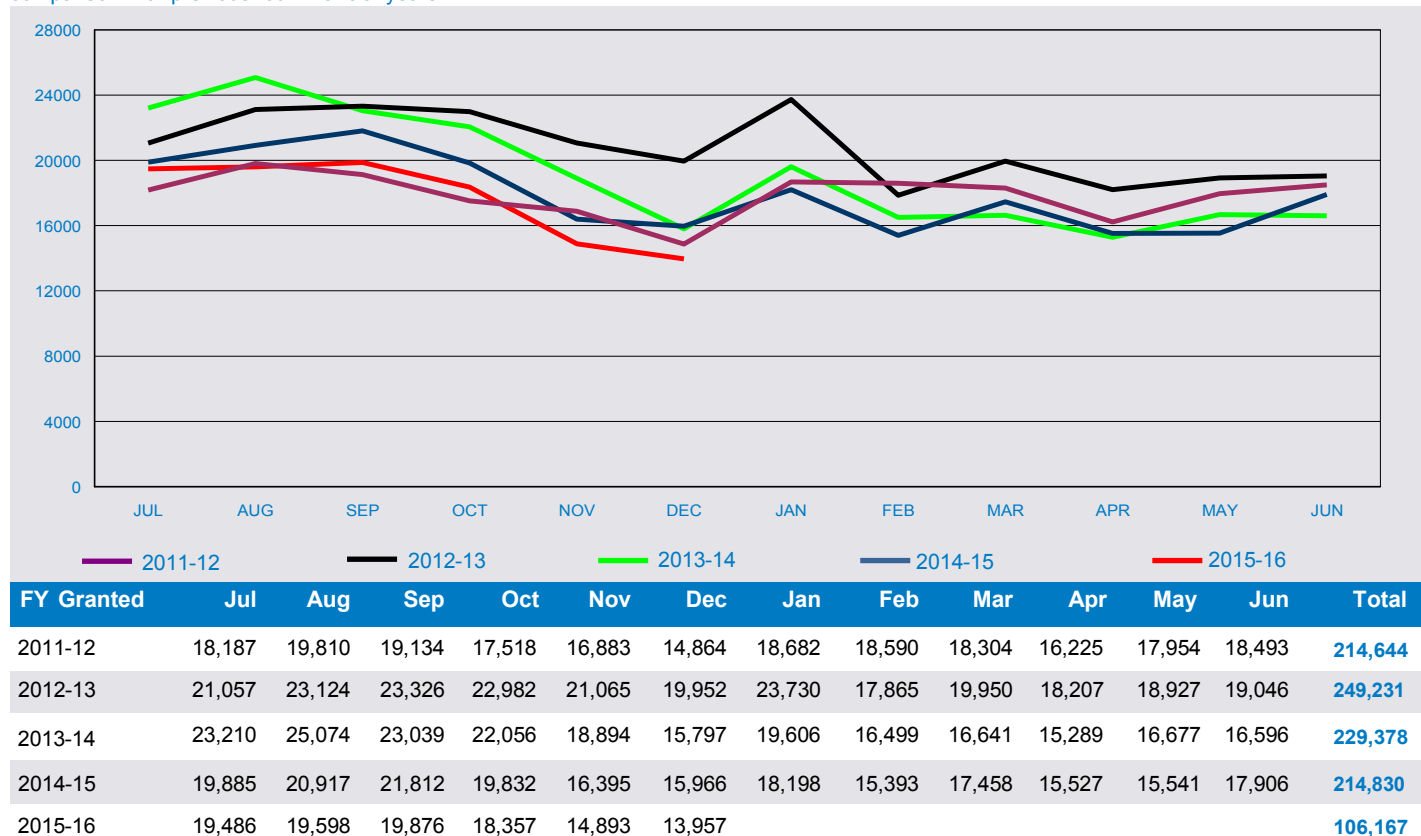
2 Granted

2 Granted

2.01 Total number of Working Holiday Maker visa applications granted in 2015-16 to 31 December 2015 by month - comparison with previous four financial years

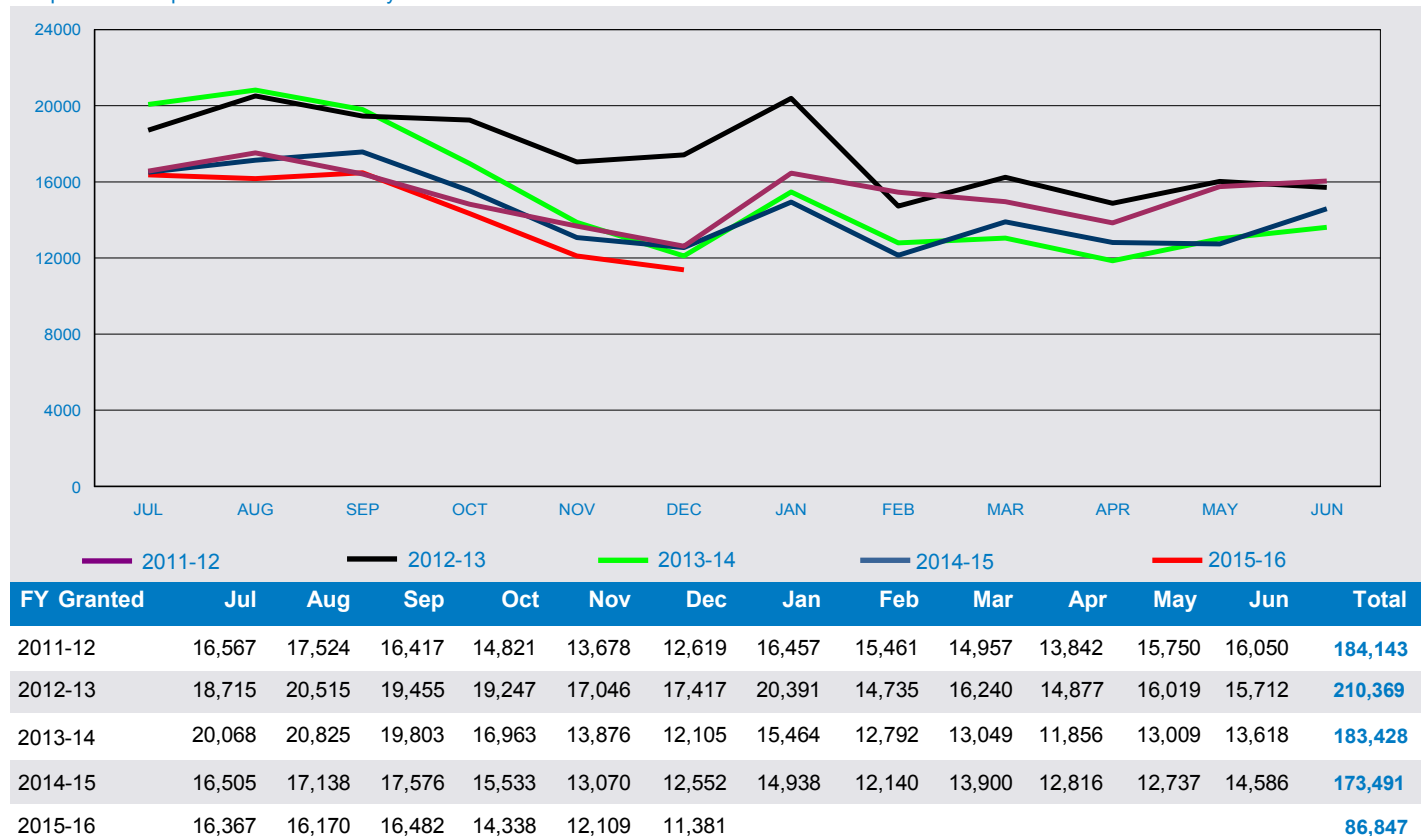


2.02 Total number of Working Holiday (subclass 417) visa applications granted in 2015-16 to 31 December 2015 by month - comparison with previous four financial years

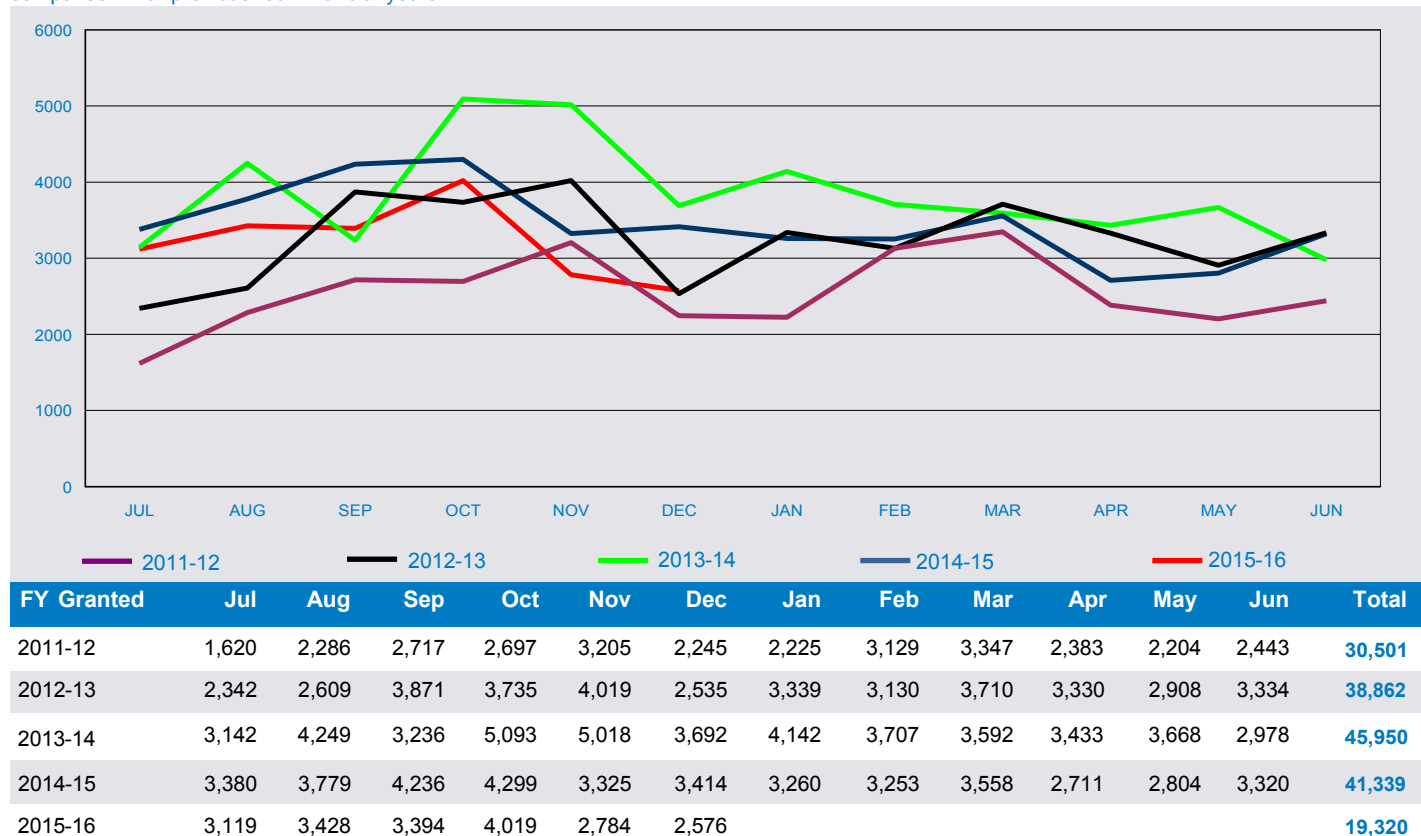


2 Granted

2.03 Number of first Working Holiday (subclass 417) visa applications granted in 2015-16 to 31 December 2015 by month - comparison with previous four financial years

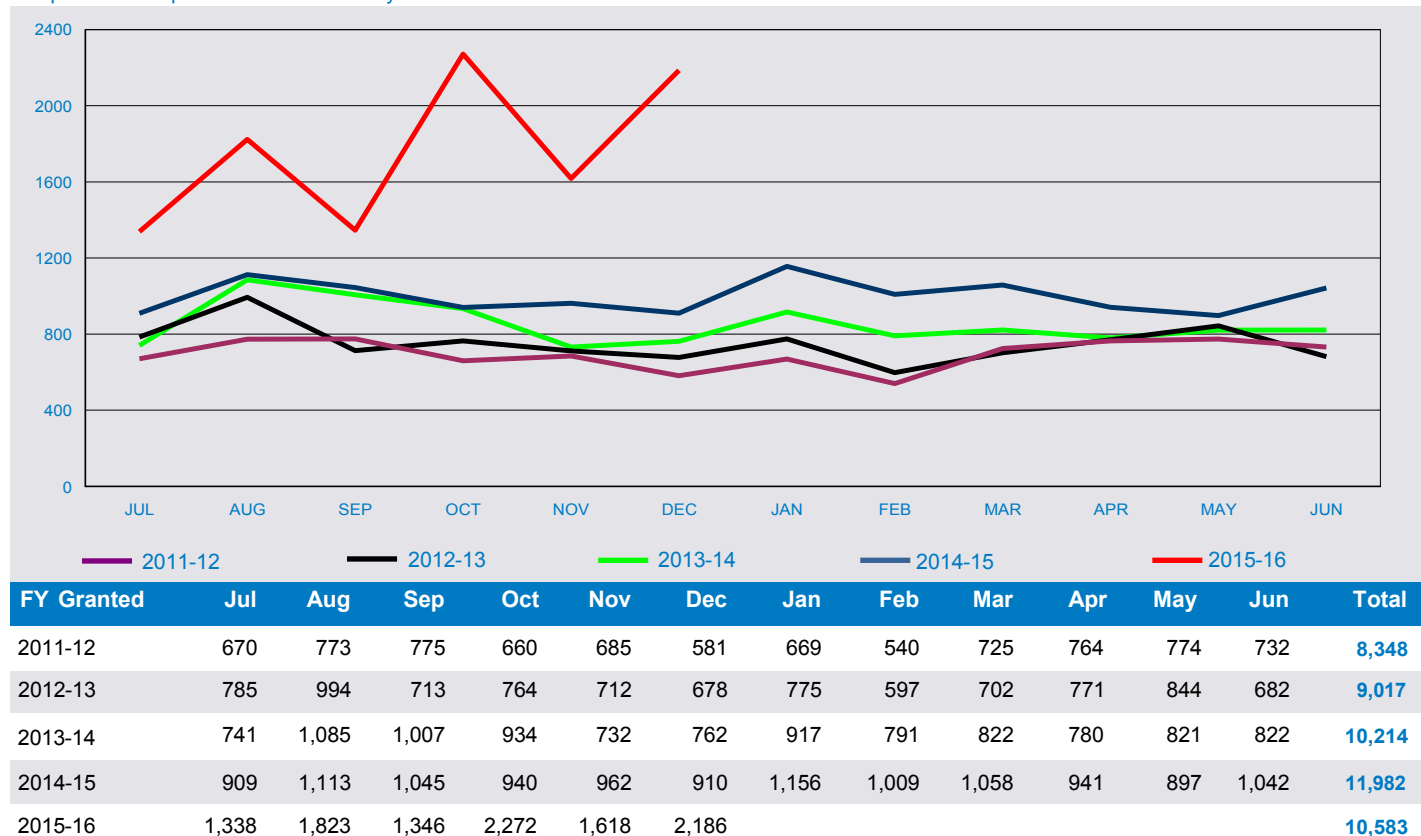


2.04 Number of second Working Holiday (subclass 417) visa applications granted in 2015-16 to 31 December 2015 by month - comparison with previous four financial years



2 Granted

2.05 Total number of Work and Holiday (subclass 462) visa applications granted in 2015-16 to 31 December 2015 by month - comparison with previous four financial years



2.06 Total number of Working Holiday Maker visa applications granted in the 6 month period between 1 July 2015 and 31 December 2015 by visa subclass and visa type - comparison with previous four periods

Visa Subclass	01/07/13 to 31/12/13	01/01/14 to 30/06/14	01/07/14 to 31/12/14	01/01/15 to 30/06/15	01/07/15 to 31/12/15
417 Working Holiday					
First visa	103,640	79,788	92,374	81,117	86,847
Second visa	24,430	21,520	22,433	18,906	19,320
All 417 Working Holiday	128,070	101,308	114,807	100,023	106,167
462 Work and Holiday	5,261	4,953	5,879	6,103	10,583
All Working Holiday Maker	133,331	106,261	120,686	106,126	116,750

2 Granted

2.07 Total number of Working Holiday (subclass 417) visa applications granted in 2015-16 to 31 December 2015 by citizenship country - comparison with the previous four financial years

Citizenship Country	2011 12 to 31/12/11	2012 13 to 31/12/12	2013 14 to 31/12/13	2014 15 to 31/12/14	2015 16 to 31/12/15	% Change from 2014 15	2015 16 as a % of Total
United Kingdom	20,818	24,134	23,928	23,924	22,502	-5.9%	21.2%
Germany, Fed Republic of	12,149	14,719	15,940	15,217	15,140	-0.5%	14.3%
France	11,092	13,815	14,988	13,338	12,255	-8.1%	11.5%
Korea, South	15,201	16,844	14,907	12,160	11,139	-8.4%	10.5%
Taiwan	9,112	17,968	15,703	12,960	11,089	-14.4%	10.4%
Italy	5,092	9,078	9,665	8,475	6,747	-20.4%	6.4%
Japan	3,966	4,732	4,859	4,938	5,633	14.1%	5.3%
Canada	4,550	4,385	4,173	4,232	4,333	2.4%	4.1%
Ireland, Republic of	11,928	10,239	6,660	4,074	3,380	-17.0%	3.2%
Sweden	3,292	3,773	3,795	3,478	3,303	-5.0%	3.1%
HKSAR of the PRC	2,824	4,666	5,837	4,681	3,158	-32.5%	3.0%
Netherlands, Kingdom of The	2,360	2,636	2,572	2,585	2,829	9.4%	2.7%
Belgium	818	1,014	1,195	1,274	1,303	2.3%	1.2%
Denmark	901	900	1,042	947	1,000	5.6%	0.9%
Finland	732	827	925	1,036	988	-4.6%	0.9%
Estonia	1,073	1,375	1,441	1,063	962	-9.5%	0.9%
Norway	415	283	334	313	323	3.2%	0.3%
Malta	58	62	51	63	50	-20.6%	0.0%
Cyprus	15	55	54	49	31	-36.7%	0.0%
Not Specified		< 5	< 5		< 5		0.0%
Total	106,396	131,506	128,070	114,807	106,167	-7.5%	100.0%

Note: Further information on statistical tables presented by citizenship country can be found on page 1 under 'About this report'

2.08 Number of first Working Holiday (subclass 417) visa applications granted in 2015-16 to 31 December 2015 by citizenship country - comparison with the previous four financial years

Citizenship Country	2011 12 to 31/12/11	2012 13 to 31/12/12	2013 14 to 31/12/13	2014 15 to 31/12/14	2015 16 to 31/12/15	% Change from 2014 15	2015 16 as a % of Total
United Kingdom	17,761	20,385	19,406	19,239	18,020	-6.3%	20.7%
Germany, Fed Republic of	11,362	13,837	15,008	14,218	14,113	-0.7%	16.3%
France	10,141	12,611	13,365	11,603	10,522	-9.3%	12.1%
Korea, South	12,678	14,181	11,917	9,560	9,106	-4.7%	10.5%
Taiwan	7,274	14,921	10,194	8,193	7,478	-8.7%	8.6%
Italy	4,561	8,204	7,900	6,500	5,095	-21.6%	5.9%
Japan	3,299	3,894	3,855	3,953	4,526	14.5%	5.2%
Canada	4,187	4,058	3,802	3,810	3,900	2.4%	4.5%
Sweden	3,135	3,558	3,542	3,133	3,002	-4.2%	3.5%
Netherlands, Kingdom of The	2,209	2,467	2,344	2,305	2,545	10.4%	2.9%
Ireland, Republic of	9,134	6,504	3,584	2,584	2,500	-3.3%	2.9%
HKSAR of the PRC	2,346	3,875	4,437	3,317	2,143	-35.4%	2.5%
Belgium	750	934	1,110	1,144	1,150	0.5%	1.3%
Denmark	854	838	988	883	918	4.0%	1.1%
Finland	687	752	840	933	845	-9.4%	1.0%
Estonia	792	995	938	621	611	-1.6%	0.7%
Norway	392	272	318	292	309	5.8%	0.4%
Malta	51	53	43	55	38	-30.9%	0.0%
Cyprus	13	55	48	31	24	-22.6%	0.0%
Not Specified		< 5	< 5		< 5		0.0%
Total	91,626	112,395	103,640	92,374	86,847	-6.0%	100.0%

Note: Further information on statistical tables presented by citizenship country can be found on page 1 under 'About this report'

2 Granted

2.09 Number of second Working Holiday (subclass 417) visa applications granted in 2015-16 to 31 December 2015 by citizenship country - comparison with the previous four financial years

Citizenship Country	2011 12 to 31/12/11	2012 13 to 31/12/12	2013 14 to 31/12/13	2014 15 to 31/12/14	2015 16 to 31/12/15	% Change from 2014 15	2015 16 as a % of Total
United Kingdom	3,057	3,749	4,522	4,685	4,482	-4.3%	23.2%
Taiwan	1,838	3,047	5,509	4,767	3,611	-24.3%	18.7%
Korea, South	2,523	2,663	2,990	2,600	2,033	-21.8%	10.5%
France	951	1,204	1,623	1,735	1,733	-0.1%	9.0%
Italy	531	874	1,765	1,975	1,652	-16.4%	8.6%
Japan	667	838	1,004	985	1,107	12.4%	5.7%
Germany, Fed Republic of	787	882	932	999	1,027	2.8%	5.3%
HKSAR of the PRC	478	791	1,400	1,364	1,015	-25.6%	5.3%
Ireland, Republic of	2,794	3,735	3,076	1,490	880	-40.9%	4.6%
Canada	363	327	371	422	433	2.6%	2.2%
Estonia	281	380	503	442	351	-20.6%	1.8%
Sweden	157	215	253	345	301	-12.8%	1.6%
Netherlands, Kingdom of The	151	169	228	280	284	1.4%	1.5%
Belgium	68	80	85	130	153	17.7%	0.8%
Finland	45	75	85	103	143	38.8%	0.7%
Denmark	47	62	54	64	82	28.1%	0.4%
Norway	23	11	16	21	14	-33.3%	0.1%
Malta	7	9	8	8	12	50.0%	0.1%
Cyprus	< 5		6	18	7	-61.1%	0.0%
Total	14,770	19,111	24,430	22,433	19,320	-13.9%	100.0%

Note: Further information on statistical tables presented by citizenship country can be found on page 1 under 'About this report'

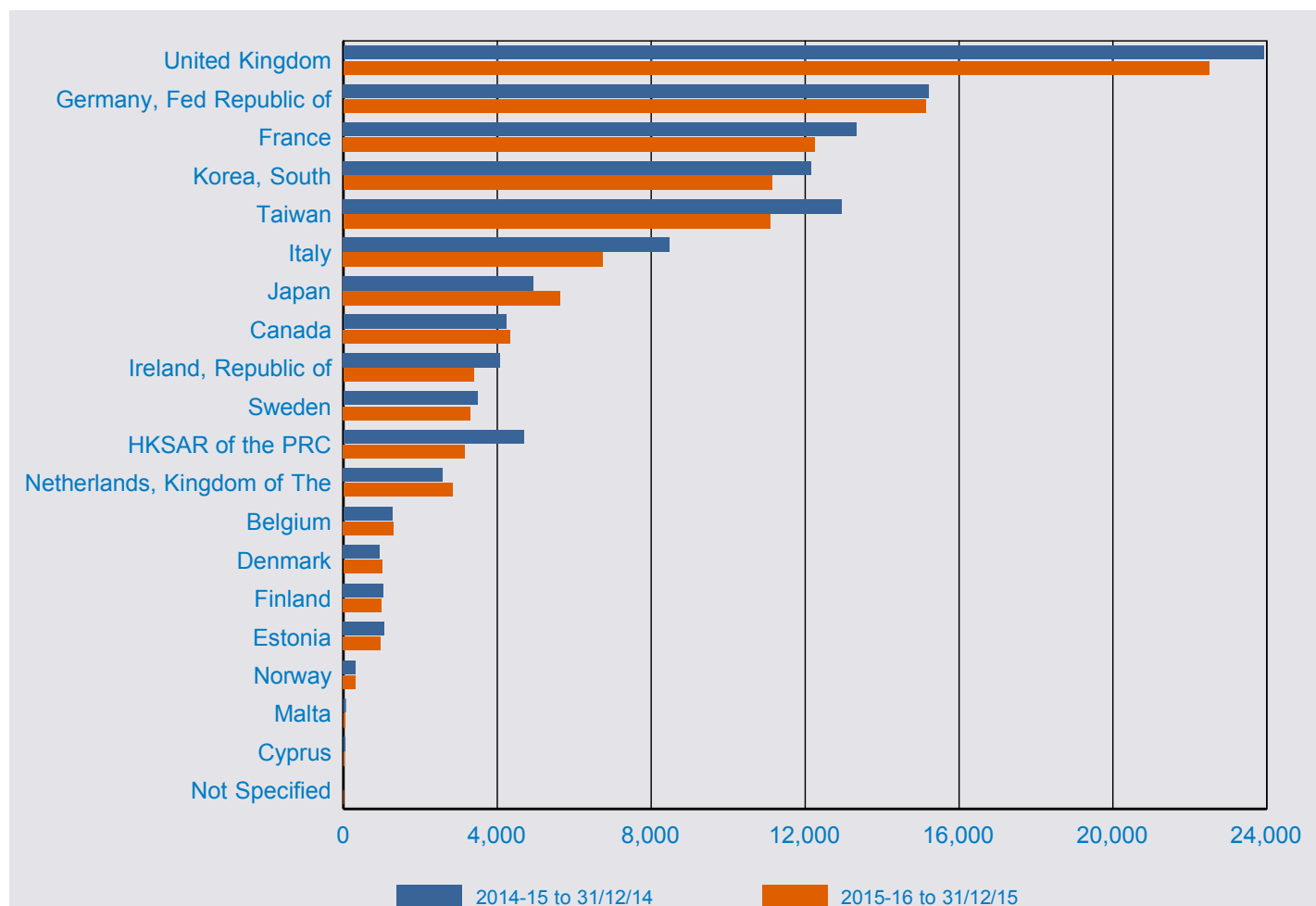
2.10 Number of Work and Holiday (subclass 462) visa applications granted in 2015-16 to 31 December 2015 by citizenship country - comparison with the previous four financial years

Citizenship Country	2011 12 to 31/12/11	2012 13 to 31/12/12	2013 14 to 31/12/13	2014 15 to 31/12/14	2015 16 to 31/12/15	% Change from 2014 15	2015 16 as a % of Total
United States of America	3,330	3,487	3,677	4,001	4,364	9.1%	41.2%
China (excl SARs)	na	na	na	na	2,866		27.1%
Chile	311	381	458	538	864	60.6%	8.2%
Argentina	na	240	281	500	700	40.0%	6.6%
Spain	na	na	na	< 5	504	12500.0%	4.8%
Thailand	302	389	411	371	500	34.8%	4.7%
Indonesia	95		210	118	244	106.8%	2.3%
Poland	na	na	na	130	200	53.8%	1.9%
Portugal	na	na	na		109		1.0%
Malaysia	100	100	92	100	100	0.0%	0.9%
Turkey	< 5	41	97	91	91	0.0%	0.9%
Uruguay	na	na	27	25	40	60.0%	0.4%
Bangladesh		7	8		< 5		0.0%
Iran	< 5	na	na	na	na		
Not Specified		< 5		< 5		-100.0%	
Total	4,144	4,646	5,261	5,879	10,583	80.0%	100.0%

Note: Further information on statistical tables presented by citizenship country can be found on page 1 under 'About this report'

2 Granted

2.11 Total number of Working Holiday (subclass 417) visa applications granted in 2015-16 to 31 December 2015 by citizenship country - comparison with the previous financial year

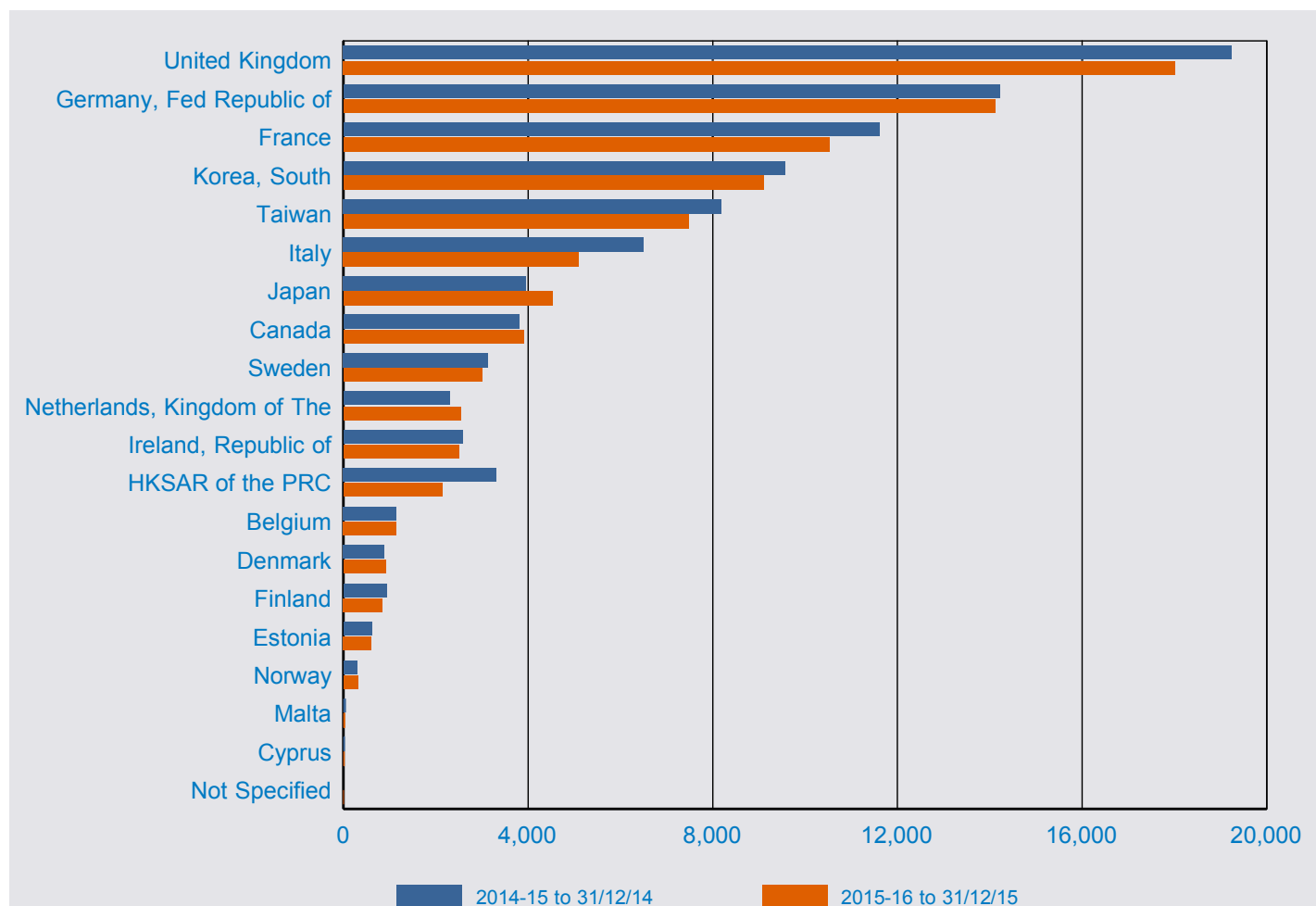


Citizenship Country	2014 15 to 31/12/14	2015 16 to 31/12/15	% Change from 2014 15	2015 16 as % of Total
United Kingdom	23,924	22,502	-5.9%	21.2%
Germany, Fed Republic of	15,217	15,140	-0.5%	14.3%
France	13,338	12,255	-8.1%	11.5%
Korea, South	12,160	11,139	-8.4%	10.5%
Taiwan	12,960	11,089	-14.4%	10.4%
Italy	8,475	6,747	-20.4%	6.4%
Japan	4,938	5,633	14.1%	5.3%
Canada	4,232	4,333	2.4%	4.1%
Ireland, Republic of	4,074	3,380	-17.0%	3.2%
Sweden	3,478	3,303	-5.0%	3.1%
HKSAR of the PRC	4,681	3,158	-32.5%	3.0%
Netherlands, Kingdom of The	2,585	2,829	9.4%	2.7%
Belgium	1,274	1,303	2.3%	1.2%
Denmark	947	1,000	5.6%	0.9%
Finland	1,036	988	-4.6%	0.9%
Estonia	1,063	962	-9.5%	0.9%
Norway	313	323	3.2%	0.3%
Malta	63	50	-20.6%	0.0%
Cyprus	49	31	-36.7%	0.0%
Not Specified	< 5	< 5		0.0%
Total	114,807	106,167	-7.5%	100.0%

Note: Further information on statistical tables presented by citizenship country can be found on page 1 under 'About this report'

2 Granted

2.12 Number of first Working Holiday (subclass 417) visa applications granted in 2015-16 to 31 December 2015 by citizenship country - comparison with the previous financial year

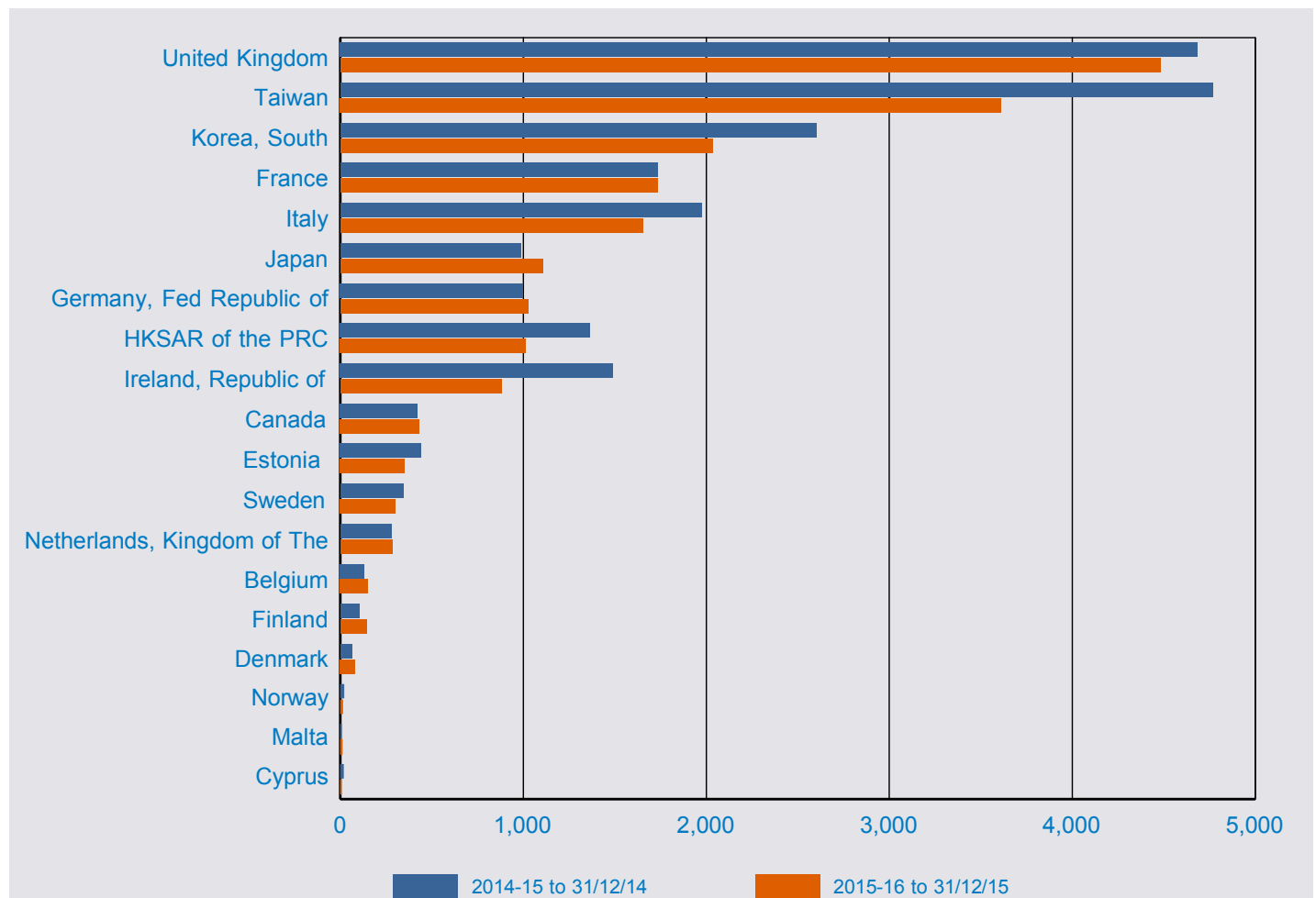


Citizenship Country	2014 15 to 31/12/14	2015 16 to 31/12/15	% Change from 2014 15	2015 16 as % of Total
United Kingdom	19,239	18,020	-6.3%	20.7%
Germany, Fed Republic of	14,218	14,113	-0.7%	16.3%
France	11,603	10,522	-9.3%	12.1%
Korea, South	9,560	9,106	-4.7%	10.5%
Taiwan	8,193	7,478	-8.7%	8.6%
Italy	6,500	5,095	-21.6%	5.9%
Japan	3,953	4,526	14.5%	5.2%
Canada	3,810	3,900	2.4%	4.5%
Sweden	3,133	3,002	-4.2%	3.5%
Netherlands, Kingdom of The	2,305	2,545	10.4%	2.9%
Ireland, Republic of	2,584	2,500	-3.3%	2.9%
HKSAR of the PRC	3,317	2,143	-35.4%	2.5%
Belgium	1,144	1,150	0.5%	1.3%
Denmark	883	918	4.0%	1.1%
Finland	933	845	-9.4%	1.0%
Estonia	621	611	-1.6%	0.7%
Norway	292	309	5.8%	0.4%
Malta	55	38	-30.9%	0.0%
Cyprus	31	24	-22.6%	0.0%
Not Specified	< 5	< 5		0.0%
Total	92,374	86,847	-6.0%	100.0%

Note: Further information on statistical tables presented by citizenship country can be found on page 1 under 'About this report'

2 Granted

2.13 Number of second Working Holiday (subclass 417) visa applications granted in 2015-16 to 31 December 2015 by citizenship country - comparison with the previous financial year

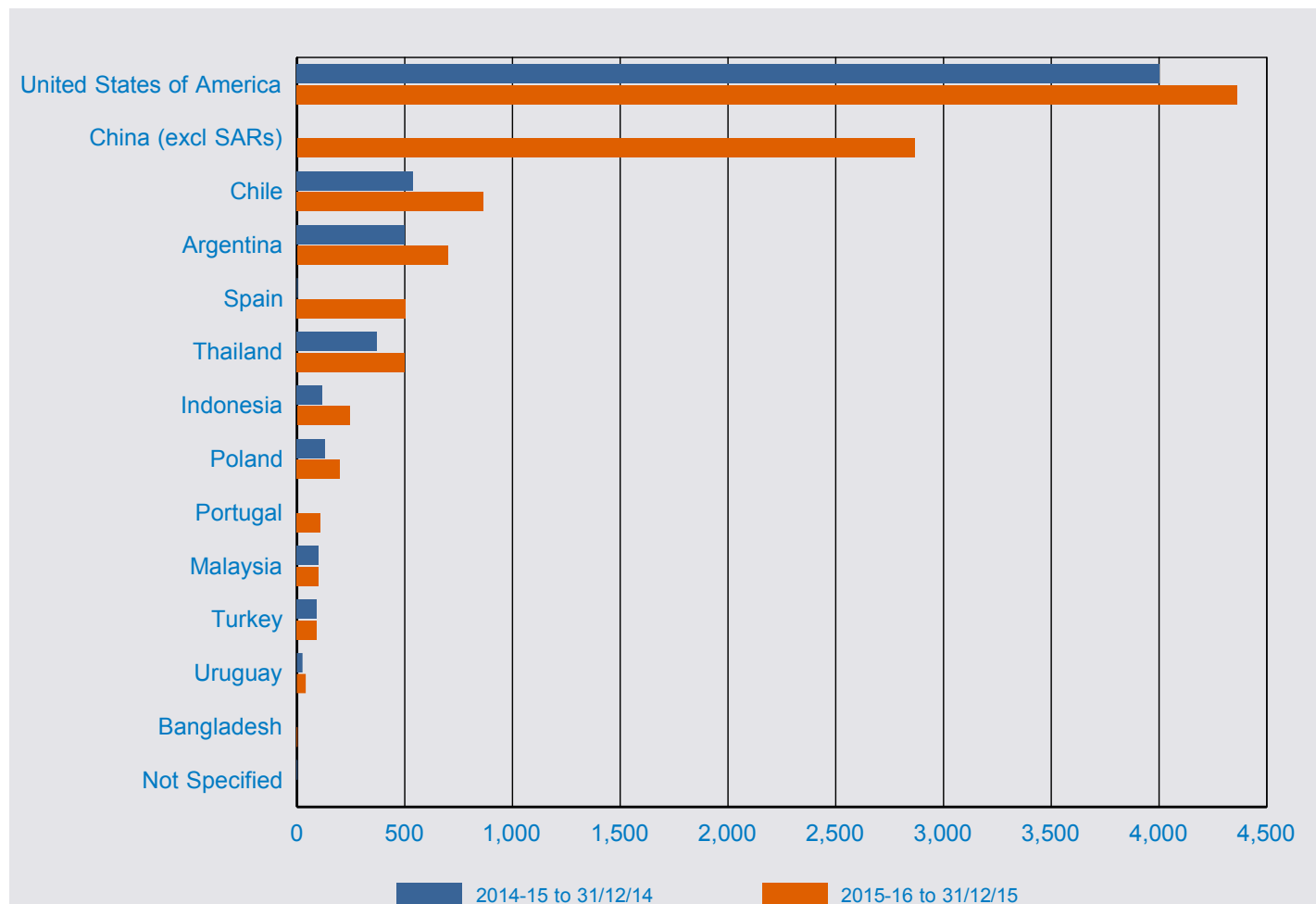


Citizenship Country	2014 15 to 31/12/14	2015 16 to 31/12/15	% Change from 2014 15	2015 16 as % of Total
United Kingdom	4,685	4,482	-4.3%	23.2%
Taiwan	4,767	3,611	-24.3%	18.7%
Korea, South	2,600	2,033	-21.8%	10.5%
France	1,735	1,733	-0.1%	9.0%
Italy	1,975	1,652	-16.4%	8.6%
Japan	985	1,107	12.4%	5.7%
Germany, Fed Republic of	999	1,027	2.8%	5.3%
HKSAR of the PRC	1,364	1,015	-25.6%	5.3%
Ireland, Republic of	1,490	880	-40.9%	4.6%
Canada	422	433	2.6%	2.2%
Estonia	442	351	-20.6%	1.8%
Sweden	345	301	-12.8%	1.6%
Netherlands, Kingdom of The	280	284	1.4%	1.5%
Belgium	130	153	17.7%	0.8%
Finland	103	143	38.8%	0.7%
Denmark	64	82	28.1%	0.4%
Norway	21	14	-33.3%	0.1%
Malta	8	12	50.0%	0.1%
Cyprus	18	7	-61.1%	0.0%
Total	22,433	19,320	-13.9%	100.0%

Note: Further information on statistical tables presented by citizenship country can be found on page 1 under 'About this report'

2 Granted

2.14 Number of Work and Holiday (subclass 462) visa applications granted in 2015-16 to 31 December 2015 by citizenship country - comparison with the previous financial year

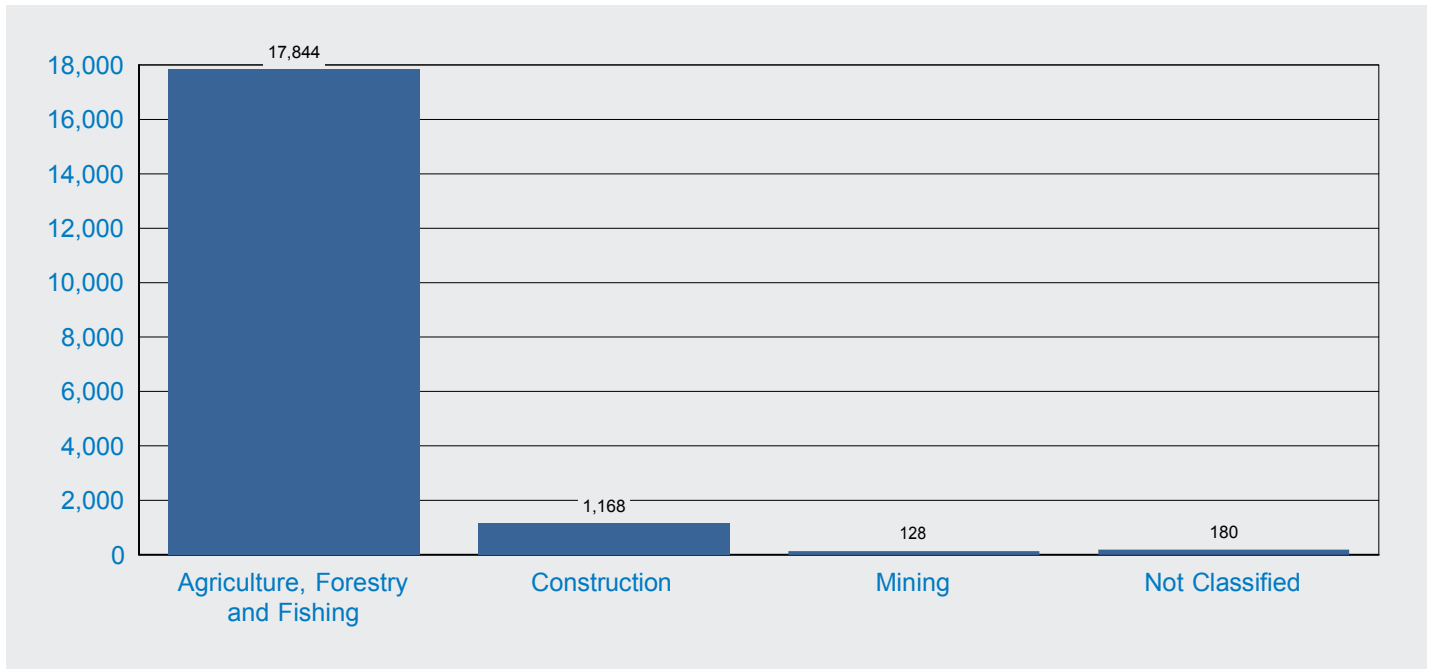


Citizenship Country	2014 15 to 31/12/14	2015 16 to 31/12/15	% Change from 2014 15	2015 16 as % of Total
United States of America	4,001	4,364	9.1%	41.2%
China (excl SARs)	na	2,866		27.1%
Chile	538	864	60.6%	8.2%
Argentina	500	700	40.0%	6.6%
Spain	< 5	504	12500.0%	4.8%
Thailand	371	500	34.8%	4.7%
Indonesia	118	244	106.8%	2.3%
Poland	130	200	53.8%	1.9%
Portugal		109		1.0%
Malaysia	100	100	0.0%	0.9%
Turkey	91	91	0.0%	0.9%
Uruguay	25	40	60.0%	0.4%
Bangladesh		< 5		0.0%
Not Specified	< 5		-100.0%	
Total	5,879	10,583	80.0%	100.0%

Note: Further information on statistical tables presented by citizenship country can be found on page 1 under 'About this report'

2 Granted

2.15 Second Working Holiday (subclass 417) visa applications granted in 2015-16 to 31 December 2015 by employer industry



This page is left intentionally blank.

3 Grant Rate

For this section, grant rates have been shown.

A grant rate is defined as:

$$\frac{\text{Number of grants}}{\text{Number of decisions}} \times 100$$

where the number of decisions equals the number of grants plus the number of refusals.

3 Grant rate

3.01 Grant rate of Working Holiday Maker visa applications decided in the 6 month period between 1 July 2015 and 31 December 2015 by visa type and visa subclass - comparison with previous four periods

Visa Subclass	01/07/13 to 31/12/13	01/01/14 to 30/06/14	01/07/14 to 31/12/14	01/01/15 to 30/06/15	01/07/15 to 31/12/15
417 Working Holiday					
First visa	99.4%	99.3%	99.4%	99.1%	99.2%
Second visa	94.8%	94.9%	96.1%	95.7%	97.2%
All 417 Working Holiday	98.5%	98.3%	98.7%	98.5%	98.8%
462 Work and Holiday					
Standard	99.1%	99.4%	98.3%	98.2%	98.6%
All Working Holiday Maker	98.5%	98.4%	98.7%	98.4%	98.8%

3 Grant rate

3.02 Grant rate for Working Holiday (subclass 417) visa applications decided in the 6 month period between 1 July 2015 and 31 December 2015 by citizenship country - comparison with previous four periods

Citizenship Country	01/07/13 to 31/12/13	01/01/14 to 30/06/14	01/07/14 to 31/12/14	01/01/15 to 30/06/15	01/07/15 to 31/12/15
subclass 417 first visa					
United Kingdom	99.7%	99.7%	99.6%	99.4%	99.3%
Germany, Fed Republic of	99.9%	99.8%	99.9%	99.8%	99.8%
France	99.9%	99.8%	99.7%	99.6%	99.6%
Korea, South	98.7%	98.3%	99.0%	98.2%	98.1%
Taiwan	98.9%	98.9%	99.1%	99.0%	98.6%
Italy	99.6%	99.6%	99.8%	99.4%	99.6%
Japan	99.7%	99.5%	99.4%	99.5%	99.7%
Canada	99.8%	99.5%	99.5%	99.4%	99.7%
Sweden	99.9%	99.7%	99.9%	99.4%	99.7%
Netherlands, Kingdom of The	99.9%	99.7%	99.7%	99.6%	99.7%
Ireland, Republic of	99.8%	99.7%	99.7%	99.7%	99.6%
HKSAR of the PRC	96.4%	96.7%	95.8%	96.2%	94.3%
Belgium	99.8%	99.7%	99.8%	99.6%	99.5%
Denmark	99.7%	100.0%	99.9%	99.5%	99.8%
Finland	100.0%	99.8%	99.9%	99.8%	99.9%
Estonia	98.7%	97.6%	98.4%	95.9%	98.7%
Norway	100.0%	99.5%	99.7%	99.4%	99.7%
Malta	100.0%	100.0%	100.0%	100.0%	100.0%
Cyprus	96.0%	98.0%	100.0%	100.0%	96.0%
Not Specified	33.3%	50.0%	00.0%	60.0%	66.7%
All subclass 417 first visa	99.4%	99.3%	99.4%	99.1%	99.2%
subclass 417 second visa					
United Kingdom	95.0%	95.4%	97.1%	95.8%	97.3%
Taiwan	95.2%	95.2%	95.6%	96.8%	97.8%
Korea, South	92.0%	92.4%	94.0%	94.5%	97.1%
France	93.1%	93.1%	96.0%	94.1%	96.2%
Italy	97.0%	96.0%	98.1%	95.9%	98.0%
Japan	95.2%	95.3%	96.6%	96.1%	97.2%
Germany, Fed Republic of	95.1%	96.2%	96.5%	94.7%	97.4%
HKSAR of the PRC	93.2%	94.3%	93.4%	95.4%	96.5%
Ireland, Republic of	96.5%	96.9%	97.4%	95.5%	96.0%
Canada	94.2%	95.5%	97.2%	94.4%	97.1%
Estonia	97.5%	92.5%	95.5%	94.7%	96.7%
Sweden	94.1%	94.4%	98.6%	99.0%	98.4%
Netherlands, Kingdom of The	95.0%	93.3%	98.2%	96.6%	97.6%
Belgium	95.5%	97.5%	97.0%	97.2%	98.1%
Finland	94.4%	95.8%	97.2%	96.3%	99.3%
Denmark	88.5%	94.3%	91.4%	94.4%	97.6%
Norway	94.1%	100.0%	100.0%	89.5%	93.3%
Malta	100.0%	100.0%	100.0%	100.0%	100.0%
Cyprus	100.0%	100.0%	94.7%	100.0%	70.0%
Not Specified		00.0%	00.0%		00.0%
All subclass 417 second visa	94.8%	94.9%	96.1%	95.7%	97.2%
All 417 Working Holiday	98.5%	98.3%	98.7%	98.5%	98.8%

Note: Further information on statistical tables presented by citizenship country can be found on page 1 under 'About this report'

3 Grant rate

3.03 Grant rate for Work and Holiday (subclass 462) visa applications decided in the 6 month period between 1 July 2015 and 31 December 2015 by citizenship country - comparison with previous four periods

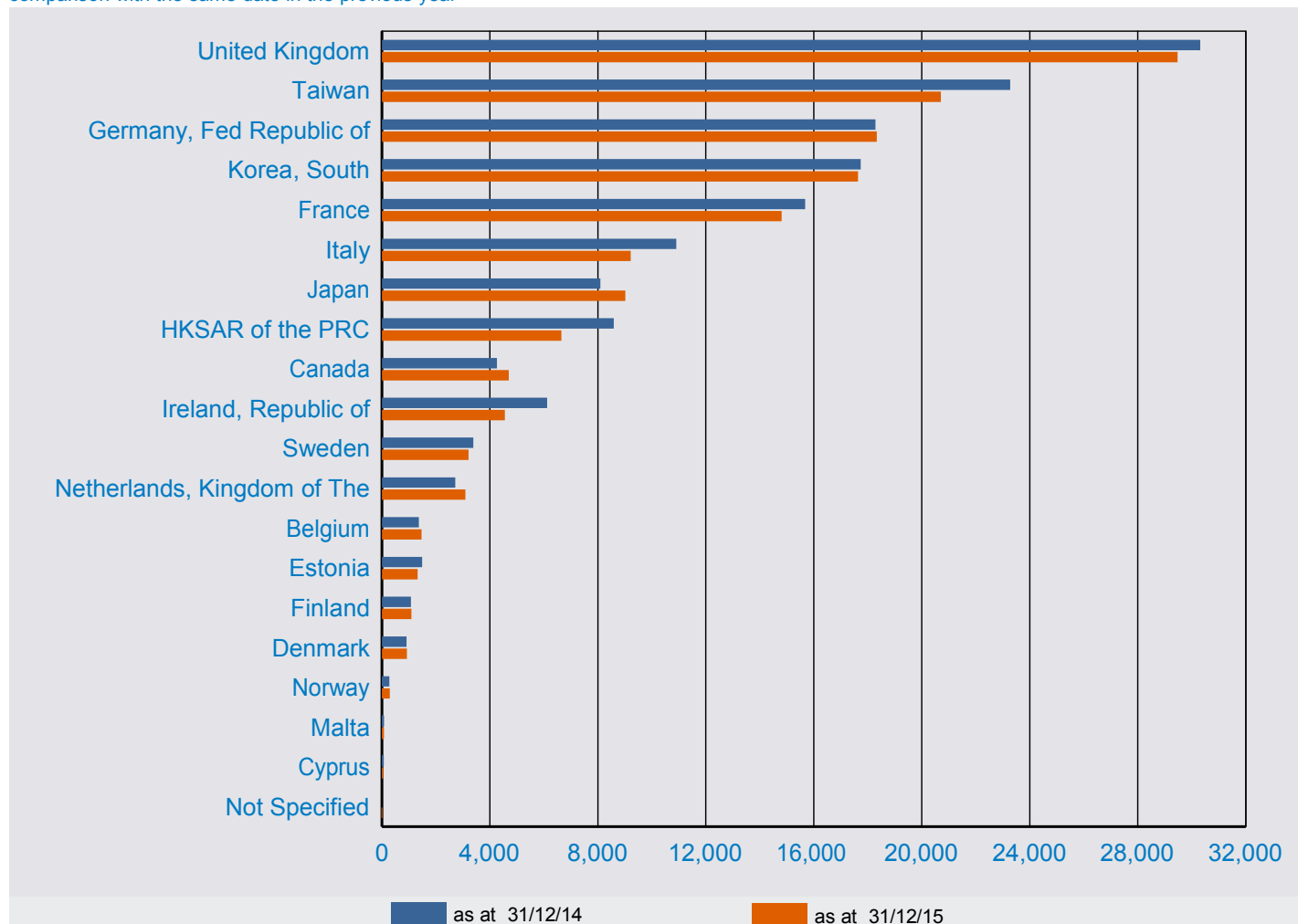
Citizenship Country	01/07/13 to 31/12/13	01/01/14 to 30/06/14	01/07/14 to 31/12/14	01/01/15 to 30/06/15	01/07/15 to 31/12/15
United States of America	99.2%	99.6%	99.2%	98.8%	99.1%
China (excl SARs)	na	na	na	na	99.0%
Chile	99.8%	99.8%	99.8%	99.5%	99.8%
Argentina	98.9%	97.3%	96.7%		96.6%
Spain	na	na	100.0%	96.3%	97.7%
Thailand	99.3%	98.4%	98.7%	96.0%	97.7%
Indonesia	99.5%	98.3%	92.2%	96.6%	98.8%
Poland	na	na	98.5%	89.7%	94.8%
Portugal	na	na	na	96.5%	92.4%
Malaysia	95.8%	100.0%	100.0%		100.0%
Turkey	97.0%	100.0%	93.8%	81.8%	96.8%
Uruguay	96.4%	92.9%	100.0%	100.0%	100.0%
Bangladesh	72.7%	100.0%	00.0%	71.0%	10.0%
Not Specified	00.0%	00.0%	100.0%		
All 462 Work and Holiday	99.1%	99.4%	98.3%	98.2%	98.6%

Note: Further information on statistical tables presented by citizenship country can be found on page 1 under 'About this report'

4 Visa Holders in Australia

4 Visa holders in Australia

4.01 Total number of Working Holiday (subclass 417) visa holders in Australia as at 31 December 2015 by citizenship country - comparison with the same date in the previous year

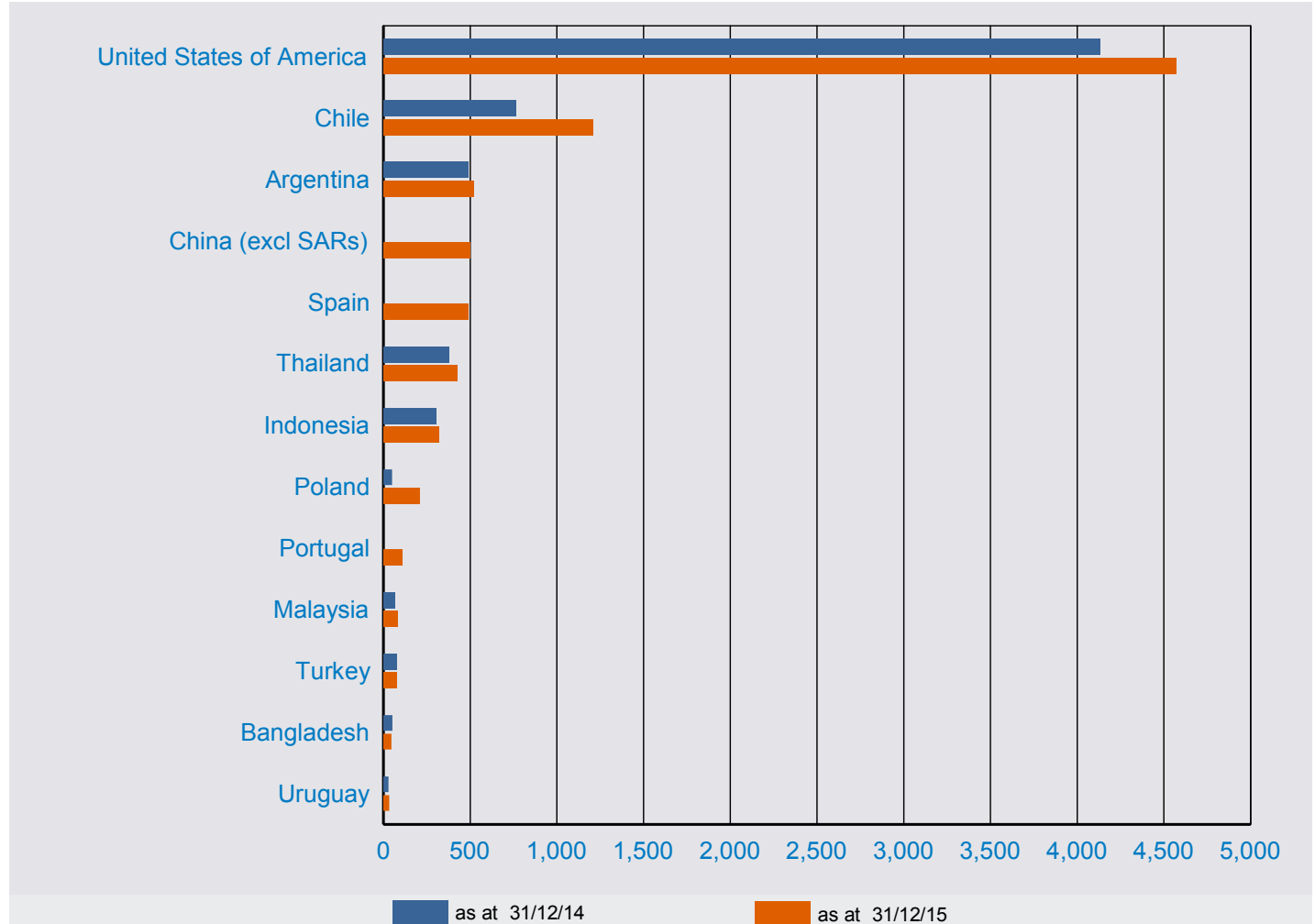


Citizenship Country	31/12/14	31/12/15	% Change from 31/12/14	31/12/15 as % of Total
United Kingdom	30,315	29,472	-2.8%	20.1%
Taiwan	23,270	20,707	-11.0%	14.1%
Germany, Fed Republic of	18,286	18,332	0.3%	12.5%
Korea, South	17,735	17,637	-0.6%	12.0%
France	15,680	14,809	-5.6%	10.1%
Italy	10,905	9,217	-15.5%	6.3%
Japan	8,093	9,018	11.4%	6.2%
HKSAR of the PRC	8,588	6,648	-22.6%	4.5%
Canada	4,260	4,697	10.3%	3.2%
Ireland, Republic of	6,121	4,557	-25.6%	3.1%
Sweden	3,385	3,207	-5.3%	2.2%
Netherlands, Kingdom of The	2,715	3,092	13.9%	2.1%
Belgium	1,368	1,467	7.2%	1.0%
Estonia	1,486	1,319	-11.2%	0.9%
Finland	1,073	1,095	2.1%	0.7%
Denmark	910	927	1.9%	0.6%
Norway	271	284	4.8%	0.2%
Malta	75	71	-5.3%	0.0%
Cyprus	63	42	-33.3%	0.0%
Not Specified		<5		0.0%
Total	154,599	146,601	-5.2%	100.0%

Note: Further information on statistical tables presented by citizenship country can be found on page 1 under 'About this report'

4 Visa holders in Australia

4.02 Total number of Work and Holiday (subclass 462) visa holders in Australia as at 31 December 2015 by citizenship country - comparison with the same date in the previous year



Citizenship Country	31/12/14	31/12/15	% Change from 31/12/14	31/12/15 as % of Total
United States of America	4,133	4,570	10.6%	53.3%
Chile	765	1,210	58.2%	14.1%
Argentina	489	522	6.7%	6.1%
China (excl SARs)	na	497		5.8%
Spain		491		5.7%
Thailand	380	424	11.6%	4.9%
Indonesia	305	318	4.3%	3.7%
Poland	49	209	326.5%	2.4%
Portugal		108		1.3%
Malaysia	64	81	26.6%	0.9%
Turkey	77	74	-3.9%	0.9%
Bangladesh	51	45	-11.8%	0.5%
Uruguay	29	33	13.8%	0.4%
Total	6,342	8,582	35.3%	100.0%

Note: Further information on statistical tables presented by citizenship country can be found on page 1 under 'About this report'

4 Visa holders in Australia

4.03 Working Holiday Maker visa holders in Australia at 31 December 2015 by visa type and visa subclass - comparison with previous four periods

Visa Subclass	31/12/13	30/06/14	31/12/14	30/06/15	31/12/15
417 Working Holiday					
First visa	138,301	107,377	117,511	101,458	114,351
Second visa	34,807	37,817	37,088	35,434	32,250
All 417 Working Holiday	173,108	145,194	154,599	136,892	146,601
462 Work and Holiday	5,874	6,007	6,342	7,026	8,582
All Working Holiday Maker	178,982	151,201	160,941	143,918	155,183

This page is left intentionally blank.

