



Australian Government

**Department of Immigration
and Border Protection**

Visitor visa programme bi-annual report

at 31 December 2015

This page is left blank intentionally.

Contents

About this report	1
Enquiries	1
Definition of terms	2
How to read this report	3
Background to the visitor visa programme	4
Executive summary	7
Section 1 Lodged	9
Section 2 Granted	17
Section 3 Grant rate	25
Section 4 Processing times	31
Section 5 Applications on hand	35
Section 6 Visa holders in Australia	37
Section 7 Approved Destination Status (ADS)	41
Section 8 Arrivals	43

This page is left blank intentionally.

About this report

This report provides quarterly data about the Visitor visa programme administered by the Department of Immigration and Border Protection (the department). The report has been produced to assist tourism industry stakeholders and policymakers.

Data is sourced from several departmental visa processing and recording systems. Data can be dynamic and there can be delays in transmission of information from the department's global operations. Variations in figures between this report and previous reports can occur. Due to these issues, figures for the current financial year should always be considered provisional.

For privacy reasons < 5 has been used where a number in a table is between 1 and 4.

Further data about the Visitor visa programme, including the report and Visitor visa grants by subclass and citizenship from the 2005-06 to the 2014-15 financial year is available at the department's website at www.immi.gov.au/media/statistics/visitor.htm

Further information about the Visitor visa programme is available at www.border.gov.au/Trav/Visi

Enquiries

Any comments or enquiries concerning this report should be sent to visa.reporting@border.gov.au quoting Report Id BR0112.

Definition of terms

Applicant type:	Under the Migration Regulations 1994 (the Regulations), there are two types of applicants. These are primary applicants and secondary applicants.
Approved Destination Status (ADS):	This scheme facilitates the travel of organised tour groups from the People's Republic of China (PRC) to Australia by approved travel agents.
Auto grant:	An automated process by which an electronic visa application is checked against security and immigration risk business rules and, if the automated checks are satisfied, the visa is granted, often within minutes after lodgement. Electronic applications which do not satisfy automated checks are referred for manual assessment by a visa processing officer.
Citizenship country:	The country of citizenship of the visa applicant or visa holder. Where a visa applicant or visa holder has more than one citizenship country, either the citizenship of the travel document or the citizenship nominated by the visa applicant is used.
Decided:	The term used for counts of decisions. See below for definition of 'decisions'.
Decisions:	An outcome where a decision-maker (including system-generated decision-making) grants or refuses a visa or sponsorship application.
eLodged:	Visa application lodged electronically, by eligible passport holders, via the departmental website. Visas that can be eLodged are the eVisitor (subclass 651) visa and the Tourist (subclass 676) visa (also known as the e676).
ETA:	Electronic Travel Authority. An electronic visa available to citizens from low risk countries. The term 'low risk' applies to countries which issue ETA eligible passports. A list of these can be found on the department's website.
Granted:	Unless otherwise specified, the number of visas granted includes primary and review grants.
In Australia:	In this report, refers to the location of the client at the time the application was lodged. An applicant in Australia may already hold a visa of the same kind or may be applying for another type of visa.
Lodged:	Lodged is the count of paper applications receipted in a departmental office or submitted electronically.
On hand:	A visa application, nomination or sponsorship that has not been finalised.
Outside Australia:	In this report, the term refers to the location of the client at the time of lodging the application.
Visa applicant:	Used to refer to clients applying for a visa. Unless otherwise specified, the term covers both primary and secondary applicants.
Visa holders in Australia:	The number of visa holders lawfully in Australia. This is not a count of all valid visas, as a number of visa holders may be outside Australia on the snapshot date.

How to read this report

On 23 March 2013 significant changes were made to Visitor visas as part of the Australian Government's Visa Simplification and Deregulation project. These changes have been summarised in the tables below where relevant visas have been combined into Tourist and Business groups.

Visitor – Tourist visas	Tourist Group
ETA (Visitor) (subclass 976) and ETA (subclass 601 – Tourist)	ETA Tourist
Tourist (subclass 676), Visitor (subclass 600) Tourist stream and Visitor (subclass 600) ADS	Tourist Visitor
Sponsored Family Visitor visa (subclass 679) and Visitor (subclass 600) Sponsored Family stream visa	Sponsored Tourist
eVisitor (subclass 651 - Tourist Entrant)	eVisitor Tourist

Visitor - Business visas	Business Group
ETA (Business – Long Validity) (subclass 956), ETA (Business – Short Validity) (subclass 977) and ETA (subclass 601 - Business)	ETA Business
Business (Short Stay) (subclass 456) and Visitor (subclass 600) Business Visitor stream	Business Visitor
Superyacht crew (subclass 488) and Sponsored Business visitor (Short Stay) (subclass 459) visa	Sponsored Business
eVisitor (subclass 651 - Business Entrant)	eVisitor Business

Notes

- **ETA Business** - Clients who previously lodged ETA (Business - Long Validity) (subclass 956) visa applications and (Business - Short Validity) (subclass 977) visa applications are now lodging ETA (subclass 601 - Business) visa applications. A small percentage of these clients may now be lodging Temporary Work (Short Stay Activity) (subclass 400) visas, which is not covered in this report.
- **Business Visitor** - Clients who previously lodged Business (Short Stay) (subclass 456) visa applications are now lodging Visitor (subclass 600) Business Visitor stream visa applications. A small percentage of these clients may now be lodging Temporary Work (Short Stay Activity) (subclass 400) visas, which is not covered in this report.

Background to the Visitor visa programme

The Visitor visa programme can be divided into two categories, Tourism and Business. Tourism may include a holiday or recreation, or visiting family and friends. The Business category allows business people to undertake business visitor activities. This may include attending meetings, conferences, site visits and exploring business opportunities. The visa holder cannot engage in work in Australia.

The Visitor visa programme is made up of three subclasses the ETA (subclass 601), eVisitor (subclass 651) and Visitor (subclass 600) visa. The Visitor (subclass 600) visa has four streams, the Tourist stream, the Sponsored Family stream, the Business Visitor stream and the Approved Destination Status stream. The below table outlines the activities allowed by each subclass and stream, and the location of the client at time of lodgement.

Subclass	Tourism	Business Visitor	Client Location
601 - Electronic Travel Authority	✓	✓	Outside Australia
651 - eVisitor	✓	✓	Outside Australia
600 - Tourist stream	✓		Both
600 - Business Visitor stream		✓	Outside Australia
600 - Sponsored Family stream	✓		Outside Australia
600 - Approved Destination Status stream	✓		Outside Australia

On 23 March 2013 the following significant changes were made to Visitor visas as part of the Australian Government's Visa Simplification and Deregulation project:

- The Tourist (subclass 676) was replaced by the Visitor (Subclass 600) Tourist stream visa. The online Tourist (Subclass 676) visa has been temporarily retained pending implementation of an online Visitor (subclass 600) visa.
- The Sponsored Family Visitor visa (subclass 679) was repealed and replaced by the Visitor (subclass 600 Sponsored Family stream visa).
- The ETA (Visitor) (subclass 976) was repealed and replaced by the ETA (subclass 601).
- The Business (Short Stay) (subclass 456) visa was repealed and replaced by the Visitor (subclass 600) Business Visitor stream visa.
- The Sponsored Business visitor (Short Stay) visa (subclass 459) was repealed and replaced by the Visitor (subclass 600) Business Visitor stream visa.
- The Electronic Travel Authority (Business - Short Validity) (subclass 977) was repealed and replaced by the Electronic Travel Authority (subclass 601).
- The Electronic Travel Authority (Business - Long Validity) (subclass 956) was repealed and replaced by the Electronic Travel Authority (subclass 601).

As part of these changes work rights previously permitted in Business Visitor visa were moved to a new dedicated visa, the Temporary Work (Short Stay Activity) (subclass 400) visa. The new Business Visitor visas introduced on 23 March 2013 enable business visitors to undertake business visitor activities, including making general business and employment enquiries, attending conferences, negotiating and reviewing business contracts and making official government to government visits. A summary of the Visitor visa framework changes is provided in the table below. Visas granted before this date remain valid for use until they expire.

Background to the Visitor visa programme - continued

Visitor visa subclasses can be divided into Tourism and Business streams:

Tourism:

1. Electronic Travel Authority (ETA) (subclass 601). This visa is designed for ETA eligible passport holders* who are outside of Australia and who want to visit Australia for tourism or business visitor purposes. It allows an applicant to stay in Australia for up to 3 months on each visit within a 12 month period from the date of grant, or for the life of the passport if it is less than 12 months. It can be applied for online, through a travel agent, airline or specialist service provider or at an Australian visa office outside of Australia.
2. eVisitor (subclass 651 - Tourist Entrant). This visa is designed for people outside of Australia who want to visit Australia for tourism purposes. It can only be lodged online and is available to certain European nationals, as it was introduced in October 2008 to meet the Australian Government's undertaking to have reciprocal short stay travel arrangements with the European Union. It allows a stay of up to 3 months on each visit within a 12 month period from the date of grant.
3. Visitor (subclass 600) Tourist stream visa. This visa allows people to visit Australia for tourism purposes. This may include a holiday or recreation, or to visit family and friends. This visa can be applied for either onshore or offshore and may also be used for other short-term non-work purposes including study for up to three months. This visa can also be applied for online (known as the 'e600') by eligible passport holders.
4. Visitor (subclass 600) Sponsored Family stream visa. This visa allows people who are outside of Australia and have an eligible sponsor in Australia (an eligible relative or Australian Government official willing to sponsor them), to travel to Australia for a holiday and to visit family. This visa is intended for higher risk visitors and contains additional requirements which are designed to provide assurance that the visa holder will comply with their visa conditions and depart Australia before their visa expires. A formal sponsorship is to be completed by an Australian citizen/permanent resident and in some cases a security bond is requested where the decision maker has residual concerns about the visa applicant's intention to abide by the visa conditions.

Business:

5. Electronic Travel Authority (ETA) (subclass 601). This visa is designed for ETA eligible passport holders who are outside of Australia and who want to visit Australia for tourism or business visitor purposes. It allows an applicant to stay in Australia for up to 3 months on each visit within a 12 month period from the date of grant, or for the life of the passport if it is less than 12 months. It can be applied for online, through a travel agent, airline or specialist service provider or at an Australian visa office outside of Australia.
6. eVisitor (subclass 651 - Business Entrant). This visa is designed for people outside of Australia who want to visit Australia for short term business purposes. It can only be lodged online and is available to certain European nationals, as it was introduced in October 2008 to meet the Australian Government's undertaking to have reciprocal short stay travel arrangements with the European Union. It allows a stay of up to 3 months on each visit within a 12 month period from the date of grant.
7. Visitor (subclass 600) Business Visitor stream visa. This visa allows people to visit Australia for business visitor activities purposes. Business visitor activities may include making general business or employment enquiries, investigating, negotiating, signing or reviewing a business contract, activities carried out as part of an official government-to-government visit and participating in conferences, trade fairs or seminars as long as the visa holder is not being paid by the organisers for their participation. This visa can also be applied for online (known as the 'e600') by eligible passport holders.

Eligible Passports for Electronic Lodgement of Visitor Visa Applications

The Department continues to implement changes to support the progressive expansion of online lodgement of Visitor visa applications to all countries. Online lodgement of Visitor (subclass 600) visas was made available to additional countries from 1 August 2014, including all countries previously eligible for the online Tourist (subclass 676). There are currently over 200 countries with access to online lodgement, with additional countries to be provided access in 2015-16.

For a list of eligible passports for Visitor e600, ETA 601 and eVisitor 651 online applications please refer to the department's website.

For e600: www.border.gov.au/Trav/Visa-1/600-/Visitor-e600-visa-online-applications

For ETA 601: www.border.gov.au/Trav/Visa-1/601-

For eVisitor 651: www.border.gov.au/Trav/Visa-1/651-

Background to the Visitor visa programme - continued

Visa Requirements

To be eligible for a Visitor visa, the applicant genuinely intends to stay temporarily in Australia for the purpose for which the visa is granted (for tourism or business visitor purposes).

Applicants must also meet certain health and character requirements, and could be asked to undergo a health examination, and/or provide police certificates for each country they have lived in for 12 months or more over the last 10 years since turning 16.

In order to meet the financial requirements for the grant of a Visitor visa, applicants must be able to demonstrate that they have access to adequate means to support themselves (and their family where relevant) during their stay in Australia, including health insurance where required. They could be asked to provide evidence of their adequate means of support.

Processing standards

The Department aims to finalise 75 per cent of Visitor visa applications within the following timeframes:

- for non-sponsored visitors where the application is lodged onshore - one working day where no concerns are identified and one week where further information is required;
- for non-sponsored visitors where the application is lodged offshore - one working day where no concerns are identified and one month where further information is required;
- for sponsored visitors (all sponsored visitor applications are lodged onshore) - 1.5 months.

The processing service standard applies where all documents are submitted with the application form.

The process may be delayed if applications are incomplete or if additional information is required, including health examination and/or character checks.

Executive Summary

Key Points

- More than 2.5 million Visitor visa applications were lodged in the first 6 months of programme year 2015-16. China was the largest source country for Visitor visa applications to Australia in 2015-16 to 31 December 2015 with 424,075 visa application lodgements, up 22.7% on the same period in 2014-15 (345,740), ahead of the United Kingdom (318,675), up 5.2%. 227,361 Visitor visa applications were lodged in 2015-16 to 31 December 2015 by citizens from the United States of America, up 6.5% compared with the same period in 2014-15 (213,557).
- There was a 10.6% increase in tourism Visitor visa applications in 2015-16 to 31 December 2015 (2,291,511) compared with the same period in 2014-15 (2,072,581). Growth in lodgements from citizens of China was up (29.4% to 384,942), the United States of America (up 8.0% to 197,367), Malaysia (up 5.9% to 147,864) and India (up 11.8% to 85,762).
- 217,440 business Visitor visa applications were lodged in 2015-16 to 31 December 2015. This was a 7.9% decrease compared with the same period in 2014-15 (236,203), which may be attributable to a decline from China and the United States of America (down 18.9% and 2.5% respectively).
- 103,516 tourist visas were granted under the Approved Destination Status (ADS) scheme in 2015-16 to 31 December 2015. This was a 27.9% increase on the same period in 2014-15 (83,260). 256,783 non-ADS tourist visas were granted in 2015-16 to 31 December 2015, a 30.3% increase on the same period in 2014-15 (197,019).
- The grant rate for Visitor visas for the quarter ending 31 December 2015 decreased slightly to 97.1% compared with 97.7% for the same quarter in 2014-15.
- On 31 December 2015, there were 517,090 Visitor visa holders in Australia. This represents a 10.5% increase when compared with Visitor visa holders in Australia on 31 December 2014 (467,748).

1 Applications lodged

More than 2.5 million Visitor visa applications were lodged in the first 6 months of programme year 2015-16. China was the largest source country for visitors to Australia in 2015-16 to 31 December 2015 with 424,075 lodgements, ahead of the United Kingdom (318,675). There was a 6.5% increase in lodgements from the United States of America (227,361) compared with the same period in 2014-15 (213,557).

2,291,511 tourism Visitor visa applications were lodged in 2015-16 to 31 December 2015. This was a 10.6% increase compared with the same period in 2014-15 (2,072,581). This increase was driven by growth in lodgements by citizens of China (up 29.4% to 384,942), the United States of America (up 8% to 197,367), Malaysia (up 5.9% to 147,864), South Korea (up 12.8% to 97,759), India (up 11.8% to 85,762) and HKSAR of the PRC (up 16.7% to 58,894).

217,440 business Visitor applications were lodged in 2015-16 to 31 December 2015, representing a 7.9% decrease compared with the same period in 2014-15 (236,203). While the largest decrease came from China (down 18.9%), most other participating countries also experienced a drop in application numbers which is possibly indicative of the reported slowdown in global economic growth.

2 Visas granted

2,212,336 tourism Visitor visas were granted in 2015-16 to 31 December 2015. This was a 10.1% increase compared with the same period in 2014-15 (2,010,057) and reflects a combined increase in Tourist Visitor visa grants (up 16.2% from 588,569 to 683,876) and ETA Tourist visa grants (up 7.3% from 1,078,525 to 1,157,291).

209,743 business Visitor visas were granted in 2015-16 to 31 December 2015. This was an 8.4% decrease compared with the same period in 2014-15 (228,987) and can be mostly attributed to a decline from China and the United States of America (down 20.2% and 2.5% respectively).

10,797 Sponsored Tourist visas were granted in 2015-16 to 31 December 2015. This was a 20.3% decrease compared with the same period in 2014-15 (13,555). This decline may be attributable to seasonal variation and increased uptake of the tourism Visitor visa.

3 Grant rates

The grant rate for all Visitor visas for the quarter ending 31 December 2015 decreased slightly to 97.1%, compared with 97.7% for the same quarter in 2014-15.

4 Processing times

During the quarter ending 31 December 2015, 75% of Tourist Visitor visa applications (including Approved Destination Status (ADS) applications) were processed within 10 calendar days. This was an improvement on the same quarter in 2014-15, when 75% of Tourist Visitor visa applications were processed within 12 calendar days.

During the December quarter, 75% of Business Visitor visa applications were processed within 6 calendar days. This is consistent when compared with the same quarter in 2014-15.

Processing times may vary where applications are incomplete at time of lodgement or where additional supporting information is required.

Executive Summary - continued

5 Applications on hand

On 31 December 2015, there were 53,676 Visitor visa applications on hand. This was a slight increase from the 53,190 applications on hand at 31 December 2014.

6 Visa holders In Australia

On 31 December 2015, there were 517,090 Visitor visa holders in Australia. This was a 10.5% increase on the 467,748 Visitor visa holders in Australia on 31 December 2014.

Visitor (subclass 600) visa holders made up the largest cohort with 212,720 visa holders in Australia, followed by the ETA (subclass 601) with 187,567 visa holders and eVisitor (subclass 651) with 110,454 visa holders in Australia on 31 December 2015.

The number of Visitor visa holders in Australia at any given time is influenced by a range of factors, including exchange rates, holiday periods, major events. In this period, there has been a general increase in tourist numbers from key markets, particularly China.

7 Approved Destination Status (ADS)

103,516 visas were granted under the ADS scheme in 2015-16 to 31 December 2015. This was a 27.9% increase compared with the same period in 2014-15, when 83,260 visas were granted under the ADS scheme.

ADS grants made up 28.7% of all subclass 600 grants to Chinese tourists in 2015-16 to 31 December 2015, a slight decrease on the same period in 2014-15 (29.7%). Independent travel by Chinese tourists continues to increase significantly however with 256,783 non-ADS grants in 2015-16 to 31 December 2015. This was a 30.3% increase on the same period in 2014-15 (197,019).

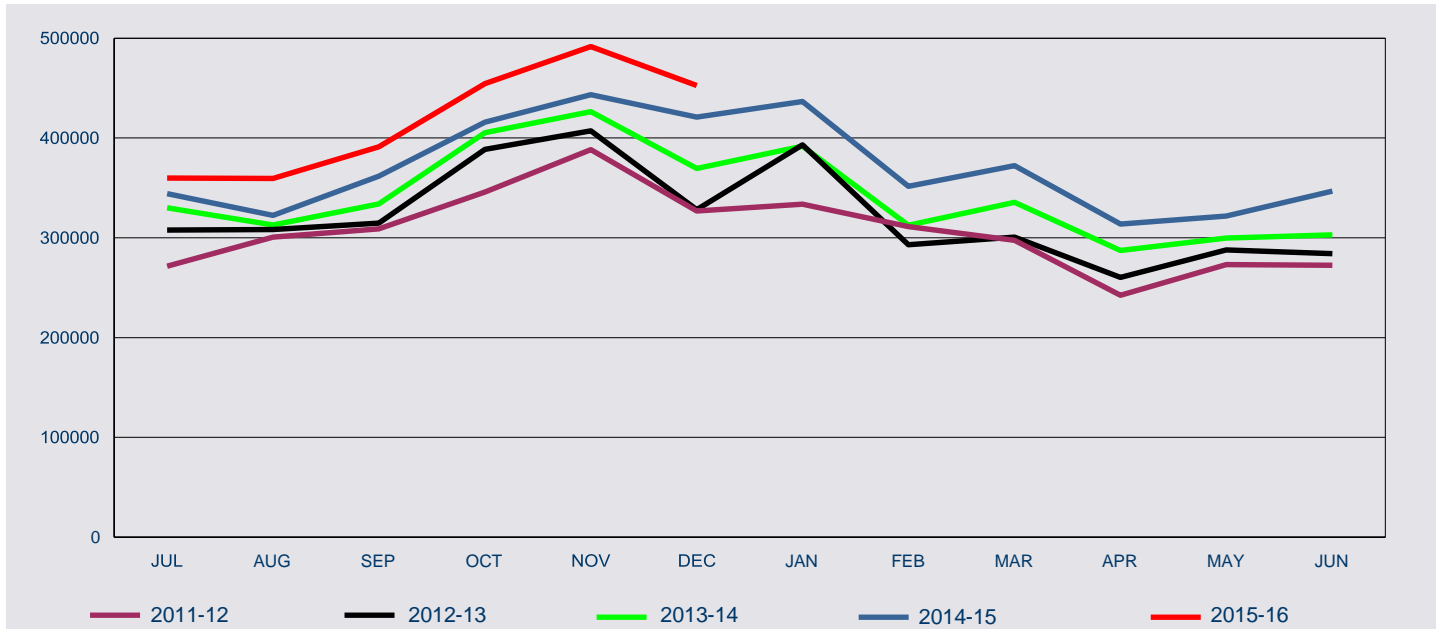
8 Arrivals data

In 2015-16 to 31 December 2015, there were 2,664,464 arrivals on Visitor visas. This was a 10.6% increase on the same period in 2014-15 (2,409,976) and reflects increased arrivals from China (up 23.7% to 431,015), the United States of America (up 7.7% to 243,055), Malaysia (up 10.1% to 194,201), India (up 16.5% to 100,771) and France (up 6.4% to 78,487).

1 Lodged

1 Lodged

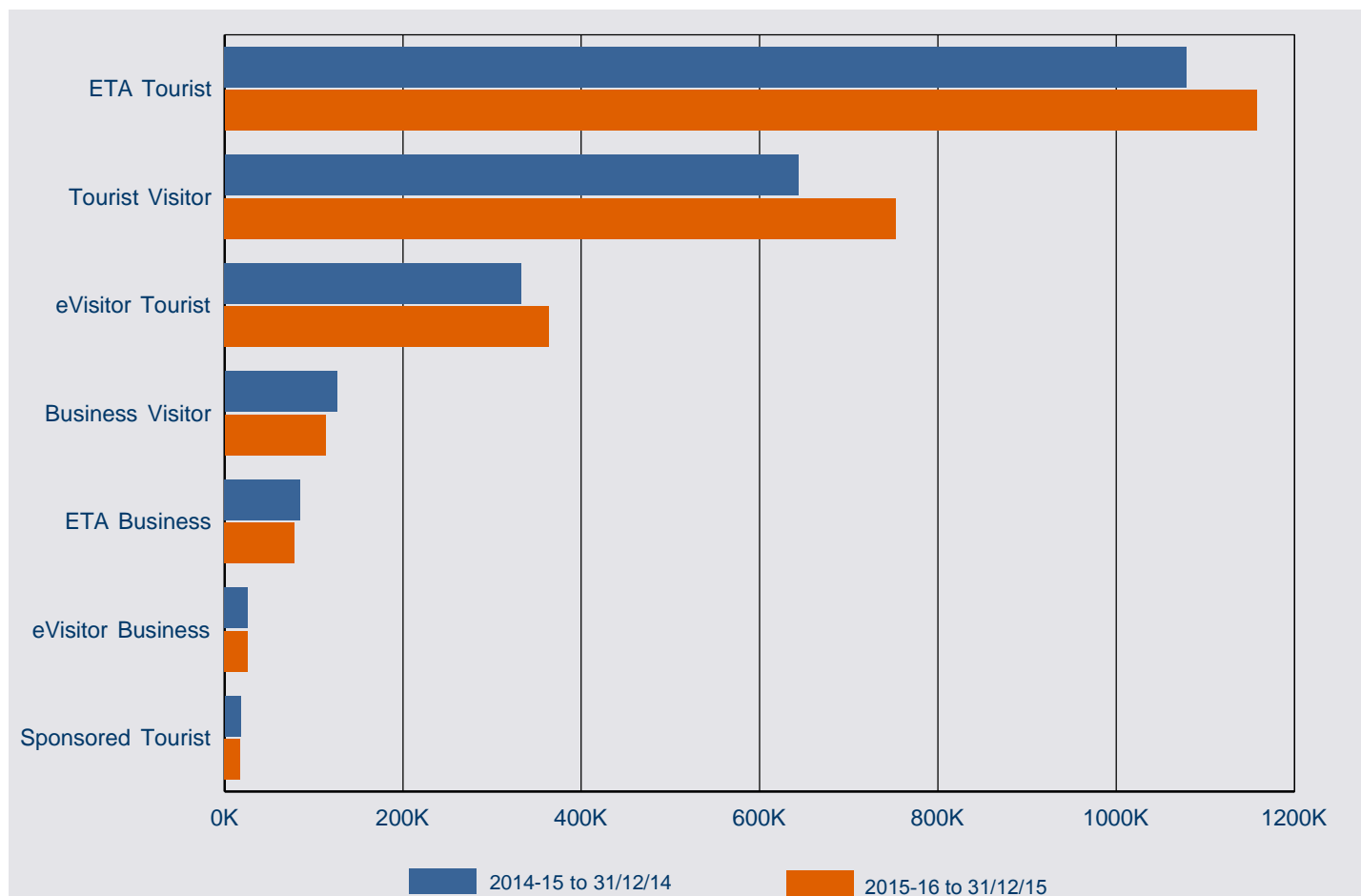
1.1 Number of Visitor visa applications lodged in 2015-16 to 31 December 2015 by month - comparison with previous four financial years



Fin'l Year	Jul	Aug	Sep	Oct	Nov	Dec	Jan	Feb	Mar	Apr	May	Jun
2011-12	271,481	300,746	308,954	345,753	388,130	326,777	333,610	311,287	297,326	242,407	273,291	272,491
2012-13	307,639	308,494	314,765	388,548	407,181	328,010	393,024	292,873	300,657	260,303	287,786	284,033
2013-14	330,019	312,764	333,799	405,305	426,353	369,533	391,913	312,350	335,635	287,178	299,608	302,765
2014-15	344,289	322,557	361,860	415,717	443,333	421,028	436,429	351,592	372,197	313,877	321,836	346,695
2015-16	359,858	359,428	391,166	454,564	491,459	452,476						

1 Lodged

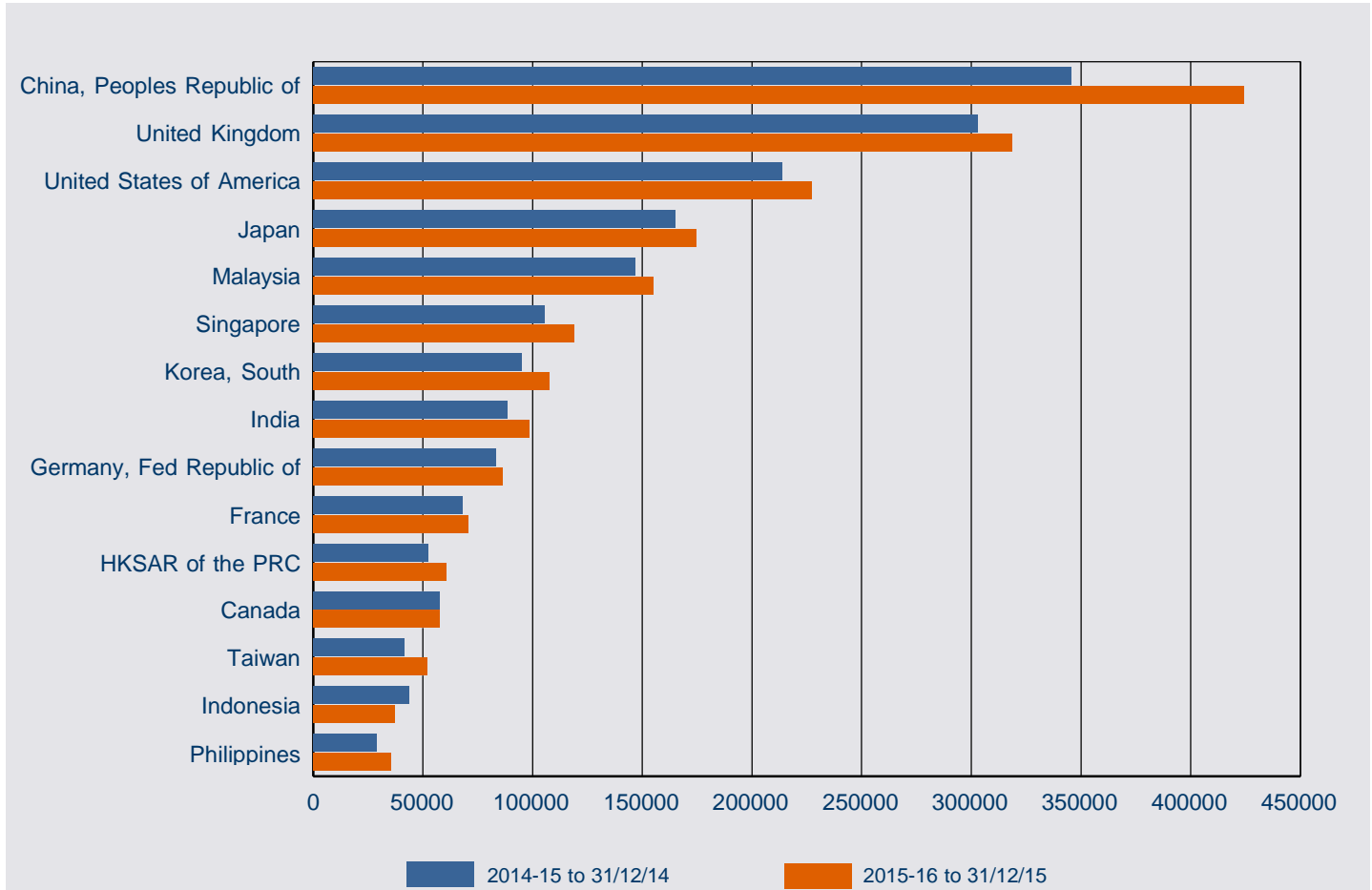
1.2 Number of Visitor visa applications lodged in 2015-16 to 31 December 2015 by visa group - comparison with same period in previous year



Visa Group	2014-15 to 31/12/14	2015-16 31/12/15	% Change from 2014-15	2015-16 as % of Total
ETA Tourist	1,078,820	1,157,478	7.3%	46.1%
Tourist Visitor	643,067	752,904	17.1%	30.0%
eVisitor Tourist	332,836	363,739	9.3%	14.5%
Business Visitor	125,703	112,956	-10.1%	4.5%
ETA Business	84,877	78,398	-7.6%	3.1%
eVisitor Business	25,623	26,086	1.8%	1.0%
Sponsored Tourist	17,858	17,390	-2.6%	0.7%
Total	2,308,784	2,508,951	8.7%	100.0%

1 Lodged

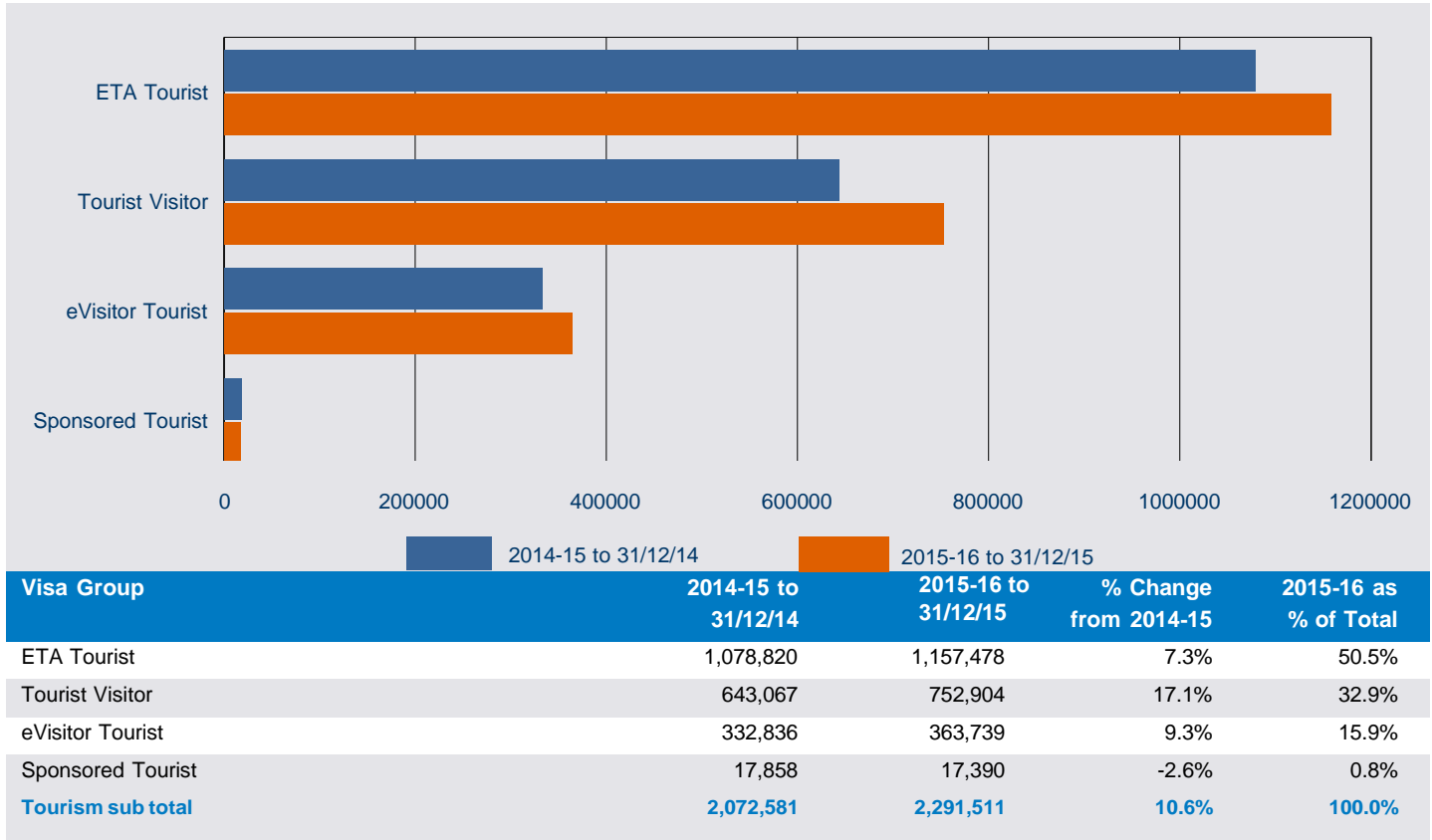
1.3 Number of Visitor visa applications lodged in 2015-16 to 31 December 2015 by citizenship country - comparison with same period in previous year



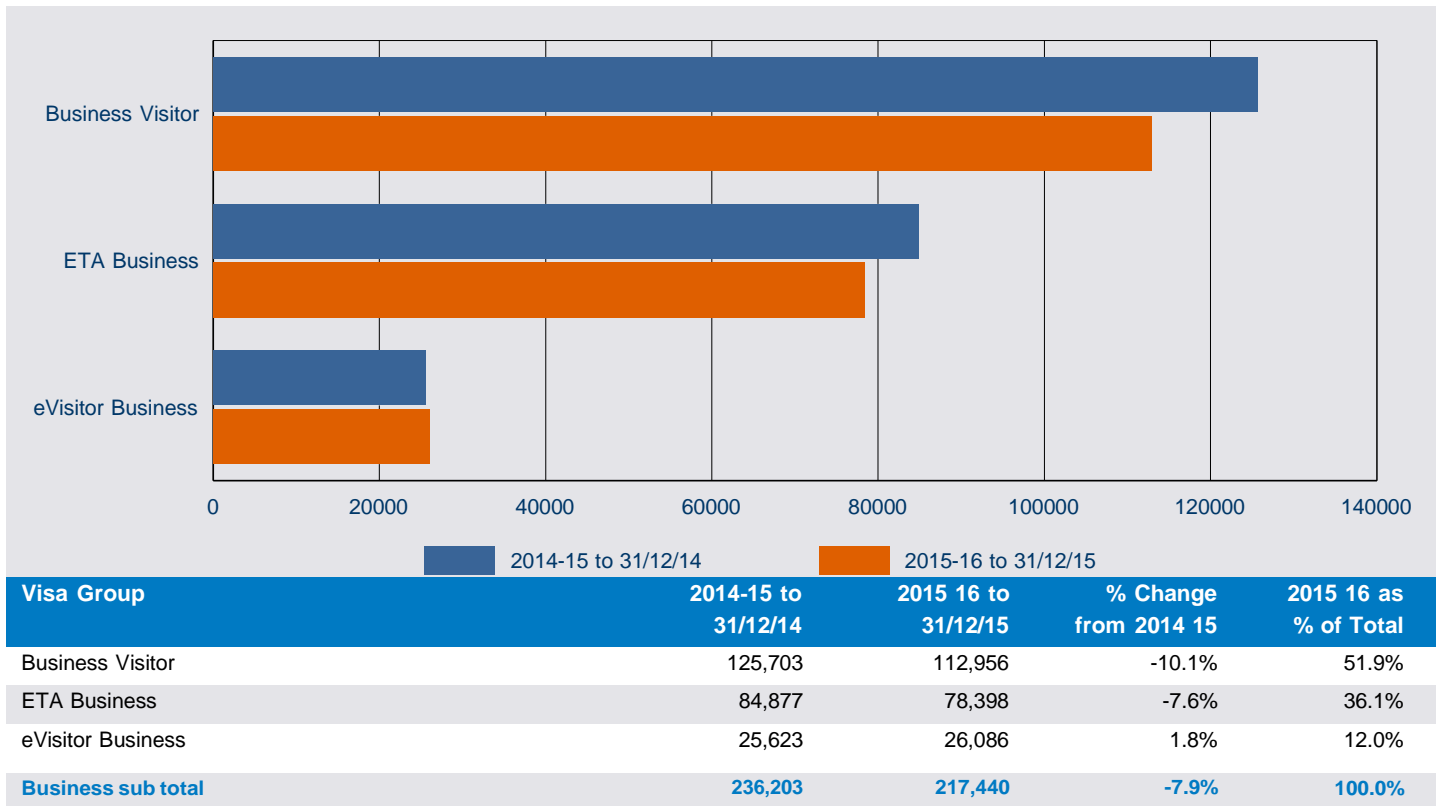
Citizenship Country	2014-15 to 31/12/14	2015-16 to 31/12/15	% Change from 2014-15	2015-16 as % of Total
China, Peoples Republic of	345,740	424,075	22.7%	16.9%
United Kingdom	302,947	318,675	5.2%	12.7%
United States of America	213,557	227,361	6.5%	9.1%
Japan	164,942	174,737	5.9%	7.0%
Malaysia	146,666	154,963	5.7%	6.2%
Singapore	105,360	118,926	12.9%	4.7%
Korea, South	95,151	107,653	13.1%	4.3%
India	88,376	98,602	11.6%	3.9%
Germany, Fed Republic of	83,512	86,285	3.3%	3.4%
France	68,316	70,543	3.3%	2.8%
HKSAR of the PRC	52,539	60,759	15.6%	2.4%
Canada	57,642	57,739	0.2%	2.3%
Taiwan	41,317	51,974	25.8%	2.1%
Indonesia	43,589	37,395	-14.2%	1.5%
Philippines	28,695	35,296	23.0%	1.4%
Other countries	470,435	483,968	2.9%	19.3%
Total	2,308,784	2,508,951	8.7%	100.0%

1 Lodged

1.4 Number of tourism Visitor visa applications lodged in 2015-16 to 31 December 2015 by visa group - comparison with same period in previous year

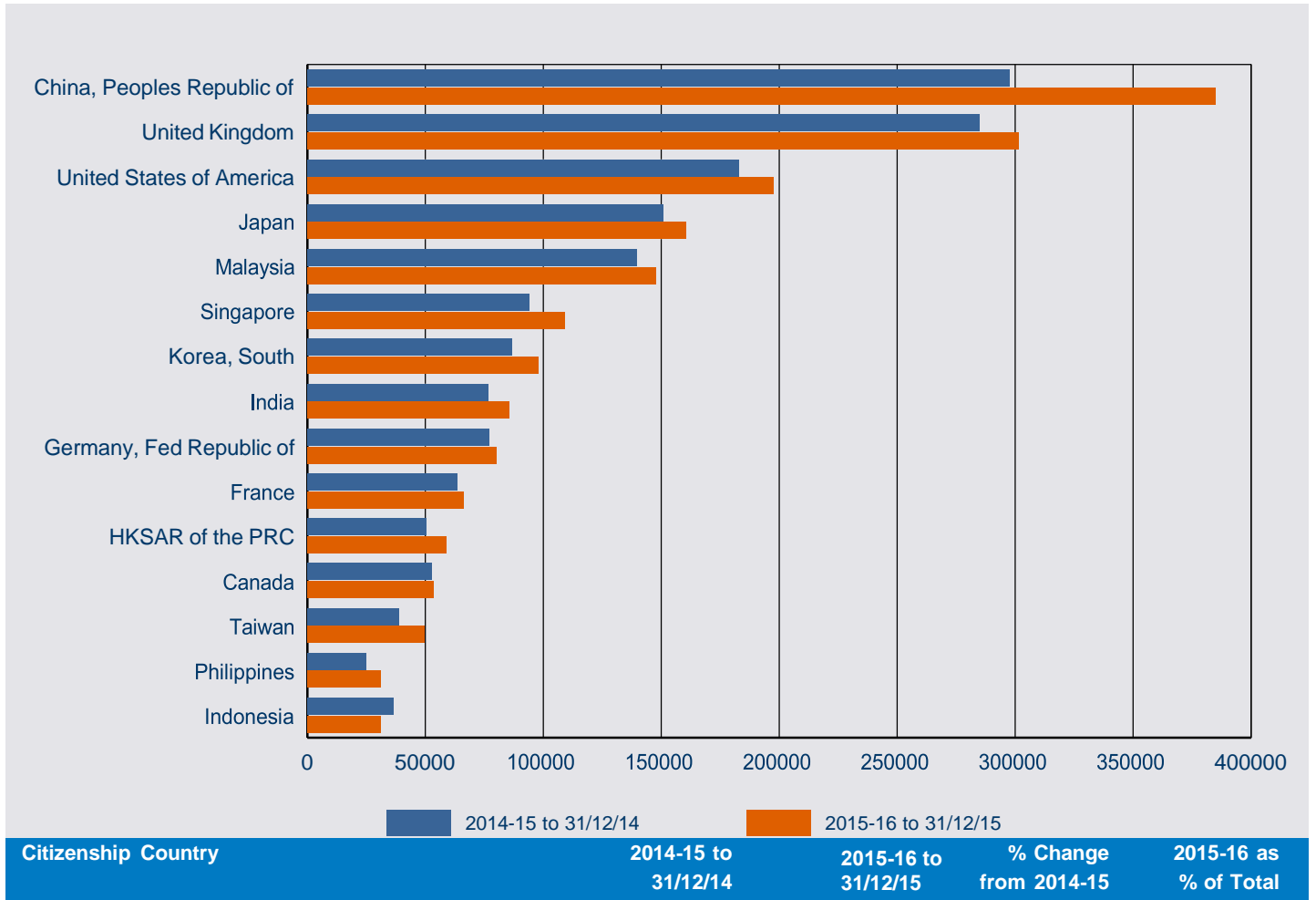


1.5 Number of business Visitor visa applications lodged in 2015-16 to 31 December 2015 by visa group - comparison with same period in previous year



1 Lodged

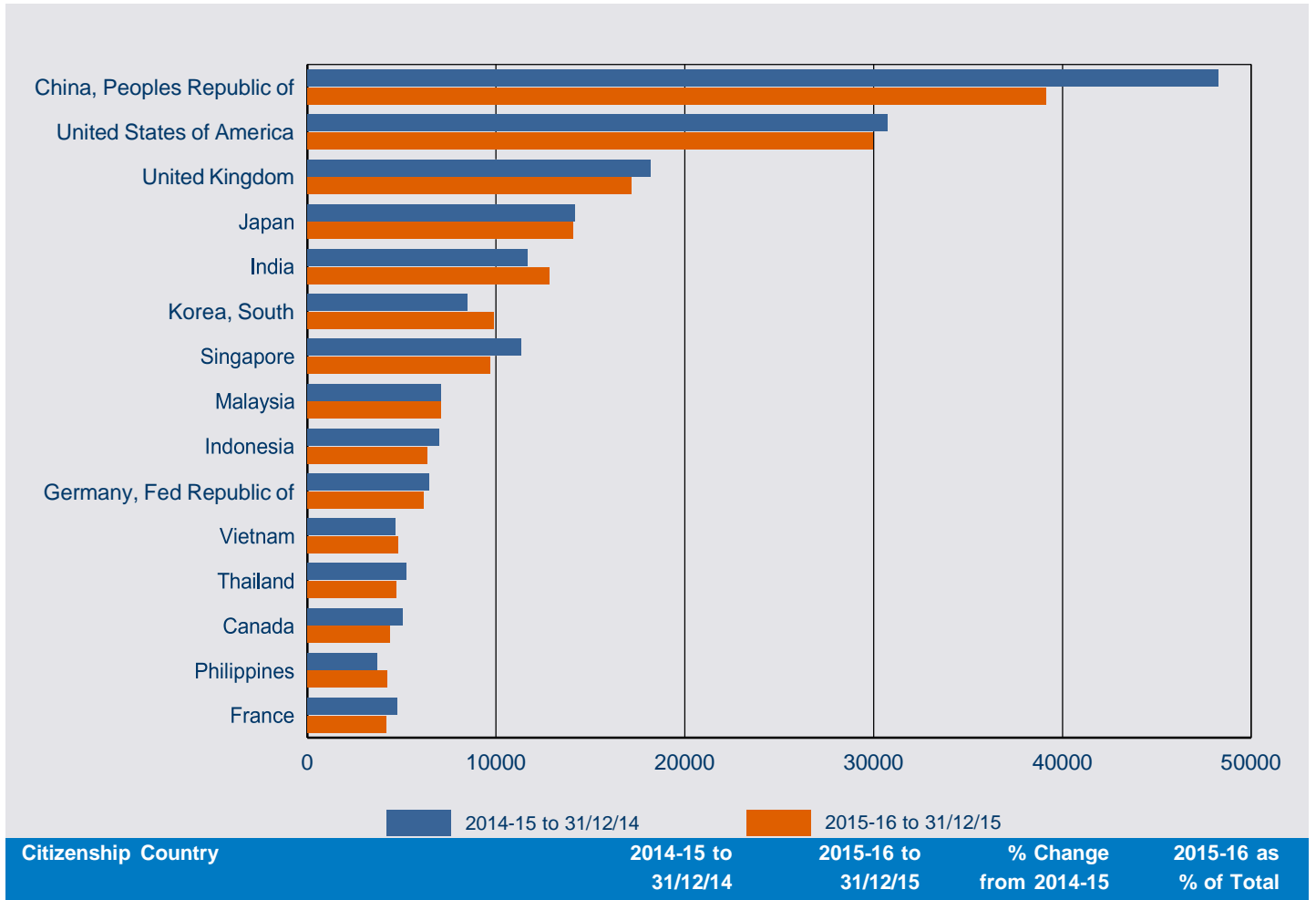
1.6 Number of tourism Visitor visa applications lodged in 2015-16 to 31 December 2015 by citizenship country - comparison with same period in previous year



Citizenship Country	2014-15 to 31/12/14	2015-16 to 31/12/15	% Change from 2014-15	2015-16 as % of Total
China, Peoples Republic of	297,507	384,942	29.4%	16.8%
United Kingdom	284,742	301,532	5.9%	13.2%
United States of America	182,804	197,367	8.0%	8.6%
Japan	150,764	160,638	6.5%	7.0%
Malaysia	139,602	147,864	5.9%	6.5%
Singapore	94,009	109,240	16.2%	4.8%
Korea, South	86,682	97,759	12.8%	4.3%
India	76,715	85,762	11.8%	3.7%
Germany, Fed Republic of	77,049	80,118	4.0%	3.5%
France	63,534	66,356	4.4%	2.9%
HKSAR of the PRC	50,484	58,894	16.7%	2.6%
Canada	52,582	53,355	1.5%	2.3%
Taiwan	38,948	49,511	27.1%	2.2%
Philippines	24,992	31,078	24.4%	1.4%
Indonesia	36,590	31,025	-15.2%	1.4%
Other countries	415,577	436,070	4.9%	19.0%
Tourism total	2,072,581	2,291,511	10.6%	100.0%

1 Lodged

1.7 Number of business Visitor visa applications lodged in 2015-16 to 31 December 2015 by citizenship country - comparison with same period in previous year



Business

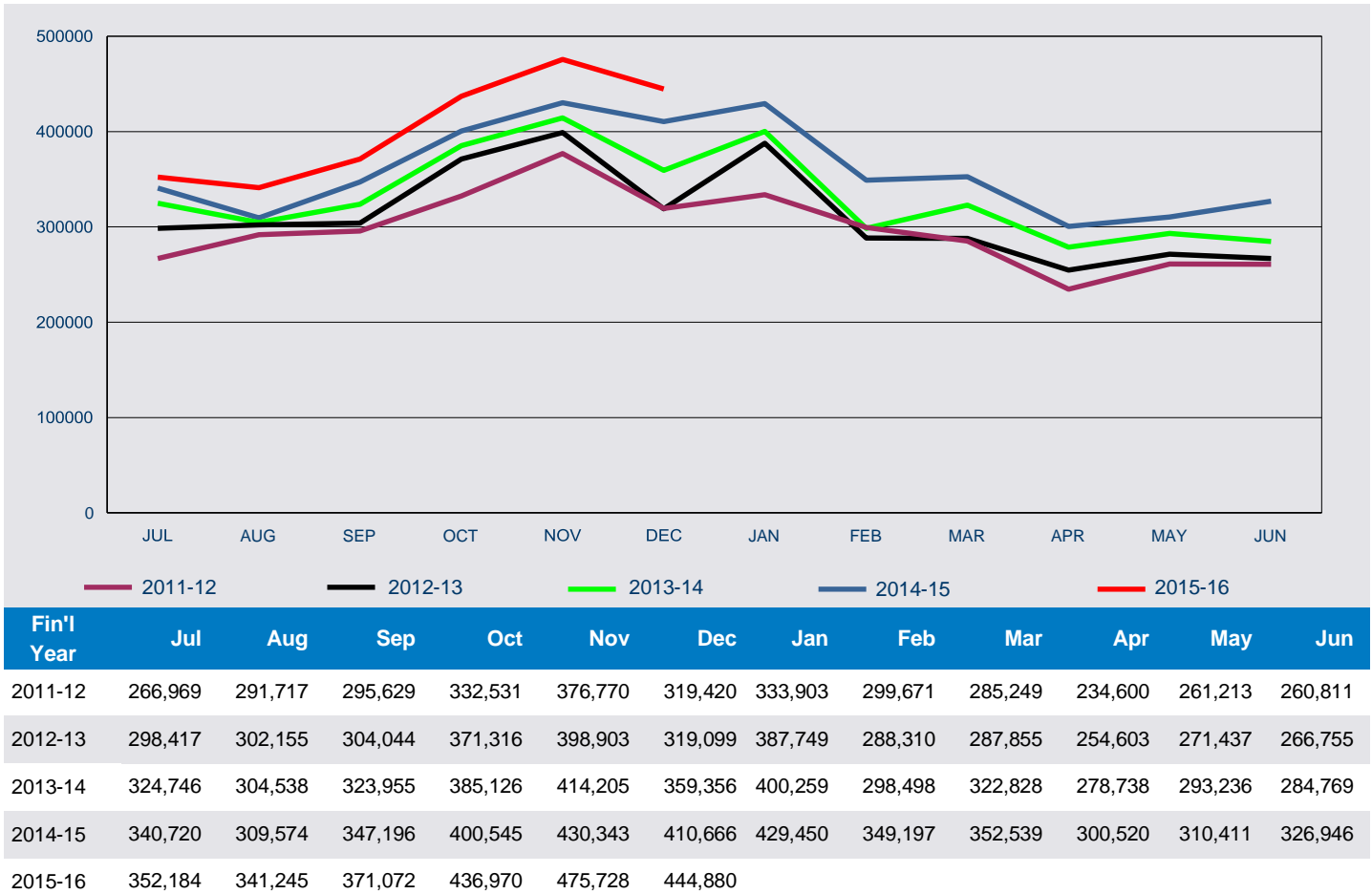
Citizenship Country	2014-15 to 31/12/14	2015-16 to 31/12/15	% Change from 2014-15	2015-16 as % of Total
China, Peoples Republic of	48,233	39,133	-18.9%	18.0%
United States of America	30,753	29,994	-2.5%	13.8%
United Kingdom	18,205	17,143	-5.8%	7.9%
Japan	14,178	14,099	-0.6%	6.5%
India	11,661	12,840	10.1%	5.9%
Korea, South	8,469	9,894	16.8%	4.6%
Singapore	11,351	9,686	-14.7%	4.5%
Malaysia	7,064	7,099	0.5%	3.3%
Indonesia	6,999	6,370	-9.0%	2.9%
Germany, Fed Republic of	6,463	6,167	-4.6%	2.8%
Vietnam	4,650	4,789	3.0%	2.2%
Thailand	5,256	4,711	-10.4%	2.2%
Canada	5,060	4,384	-13.4%	2.0%
Philippines	3,703	4,218	13.9%	1.9%
France	4,782	4,187	-12.4%	1.9%
Other countries	49,376	42,726	-13.5%	19.6%
Business total	236,203	217,440	-7.9%	100.0%

This page is left blank intentionally.

2 Granted

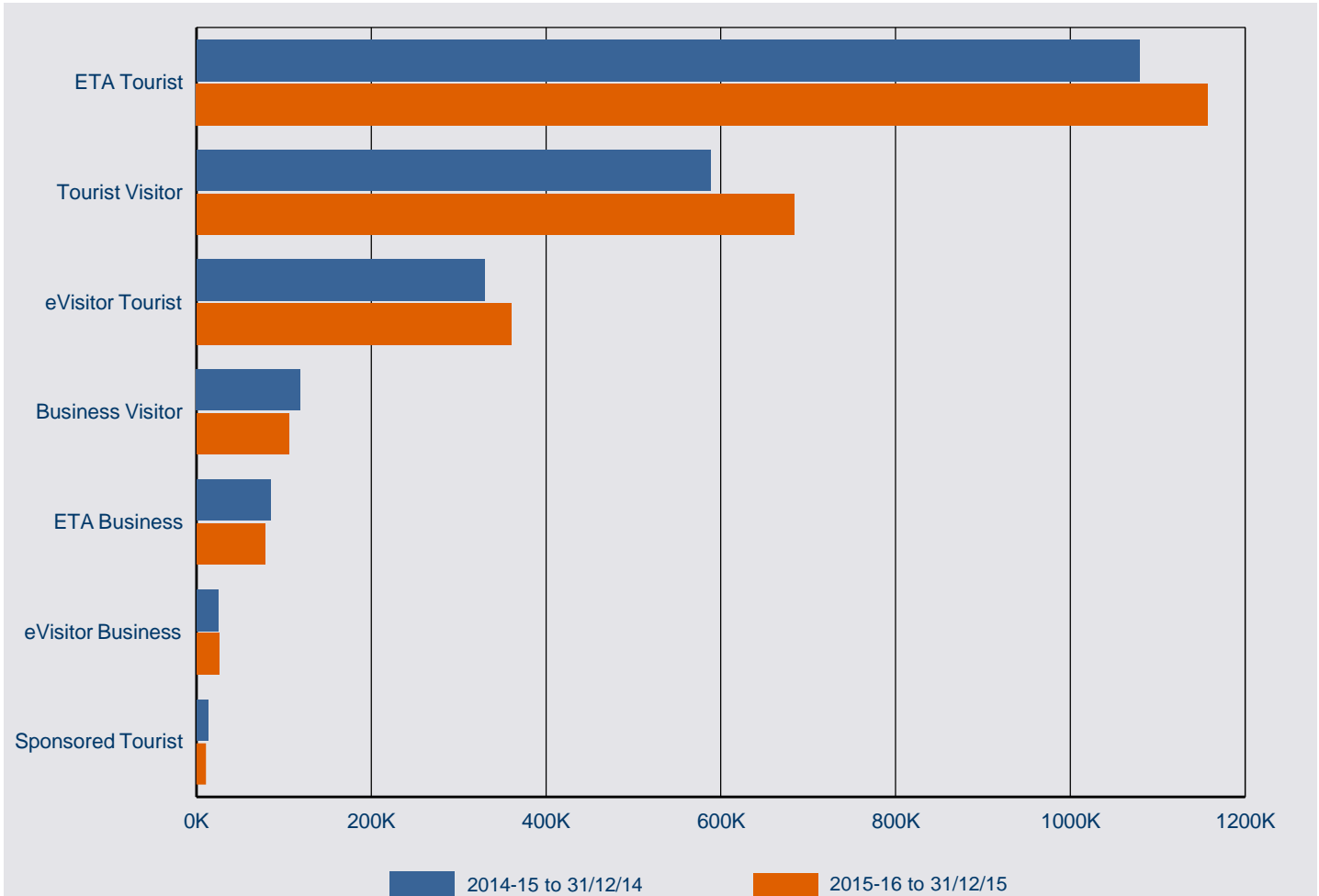
2 Granted

2.1 Number of Visitor visa applications granted in 2015-16 to 31 December 2015 by month - comparison with previous four financial years



2 Granted

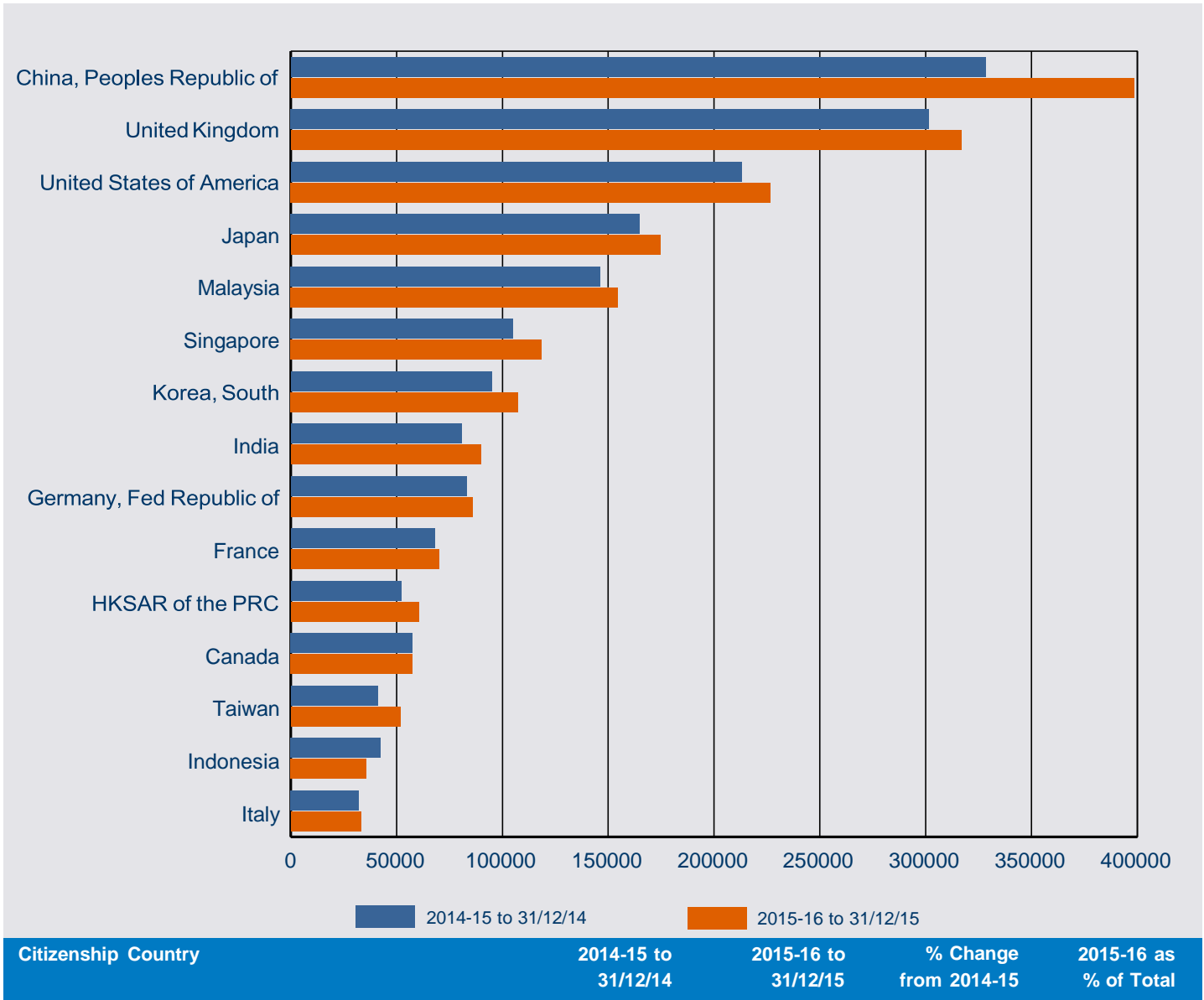
2.2 Number of Visitor visa applications granted in 2015-16 to 31 December 2015 by visa group - comparison with same period in previous year



Visa Group	2014-15 to 31/12/14	2015-16 to 31/12/15	% Change from 2014-15	2015-16 as % of Total
ETA Tourist	1,078,525	1,157,291	7.3%	47.8%
Tourist Visitor	588,569	683,876	16.2%	28.2%
eVisitor Tourist	329,408	360,372	9.4%	14.9%
Business Visitor	119,058	105,730	-11.2%	4.4%
ETA Business	84,881	78,389	-7.6%	3.2%
eVisitor Business	25,048	25,624	2.3%	1.1%
Sponsored Tourist	13,555	10,797	-20.3%	0.4%
Total	2,239,044	2,422,079	8.2%	100.0%

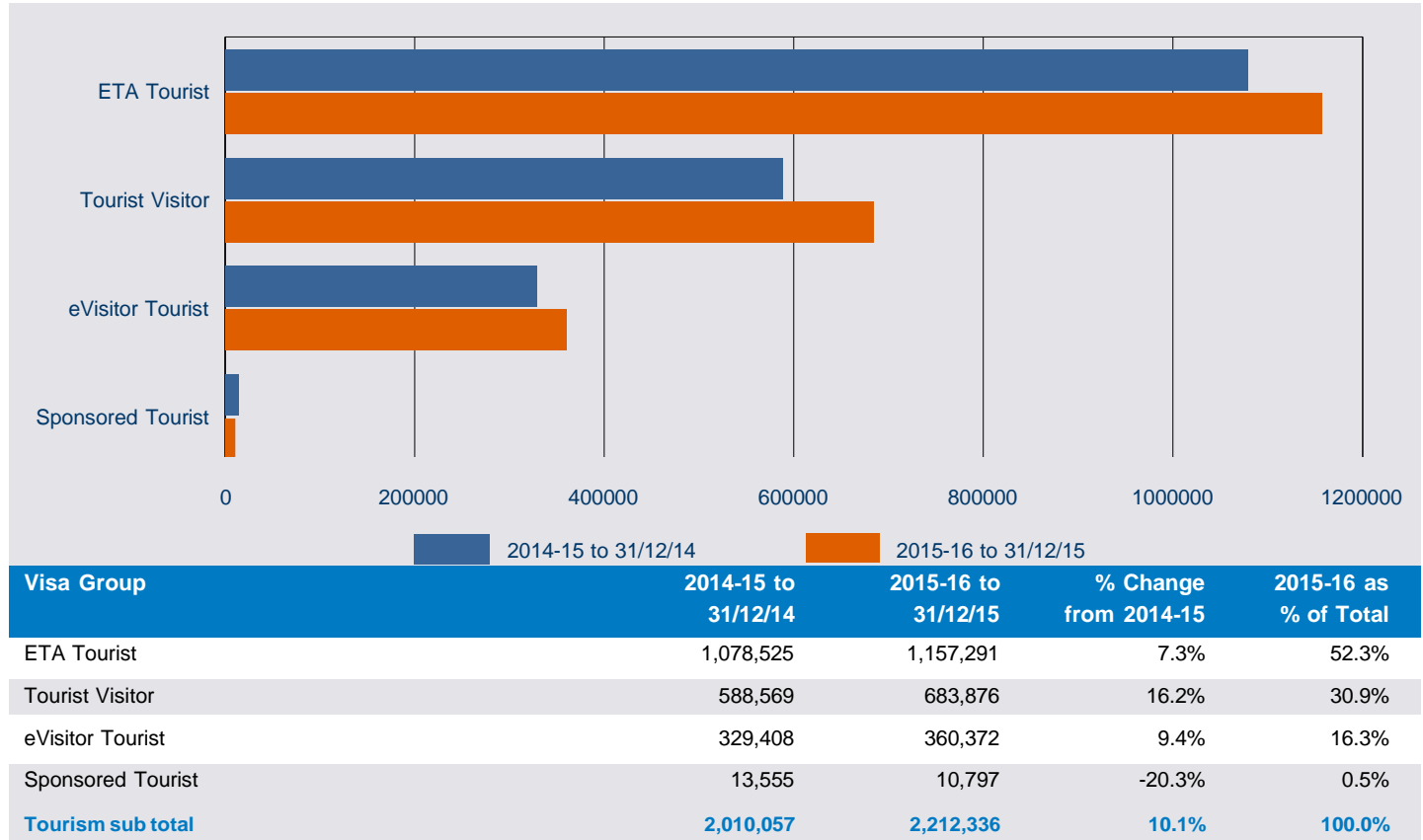
2 Granted

2.3 Number of Visitor visa applications granted in 2015-16 to 31 December 2015 by citizenship country - comparison with same period in previous year

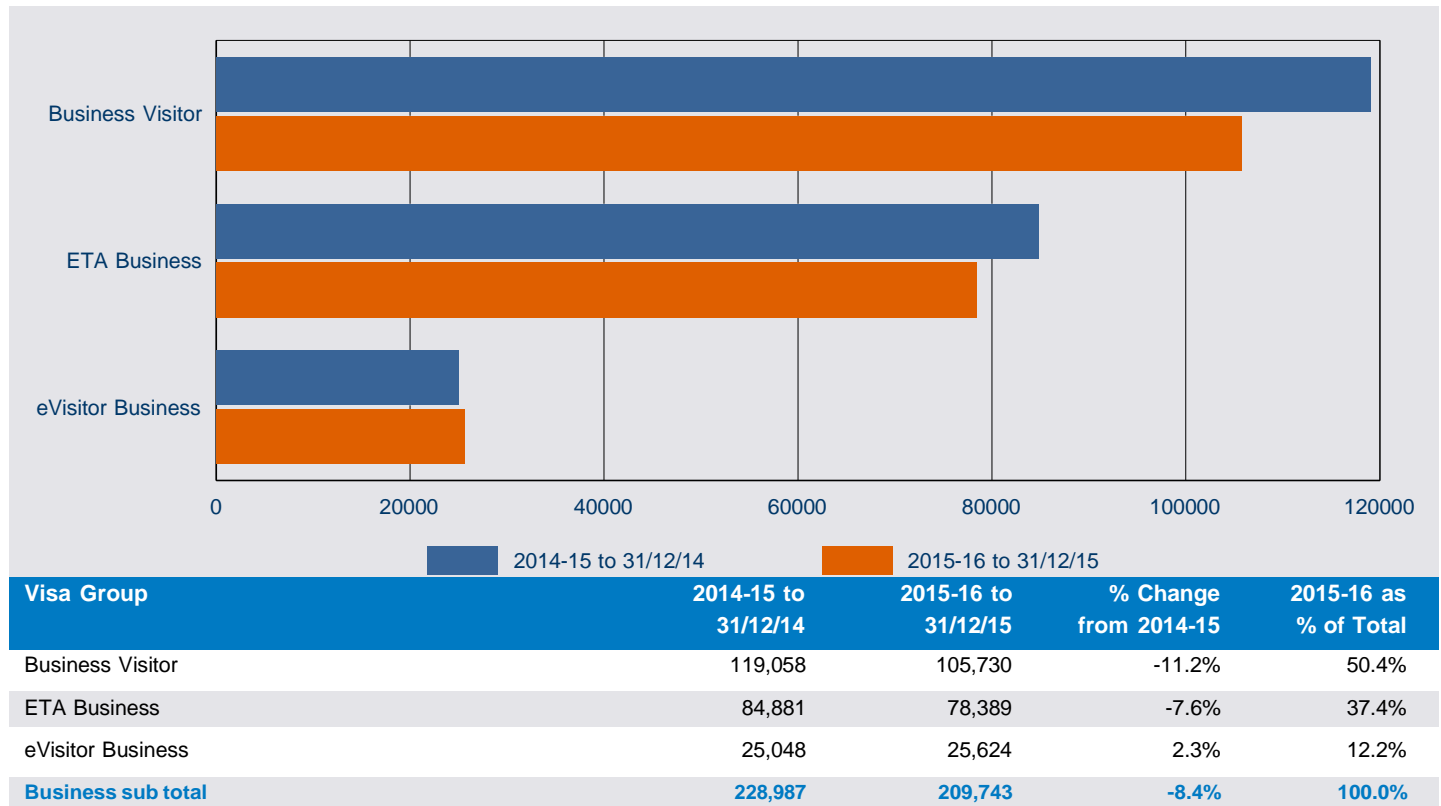


2 Granted

2.4 Number of tourism Visitor visa applications granted in 2015-16 to 31 December 2015 by visa group - comparison with same period in previous year

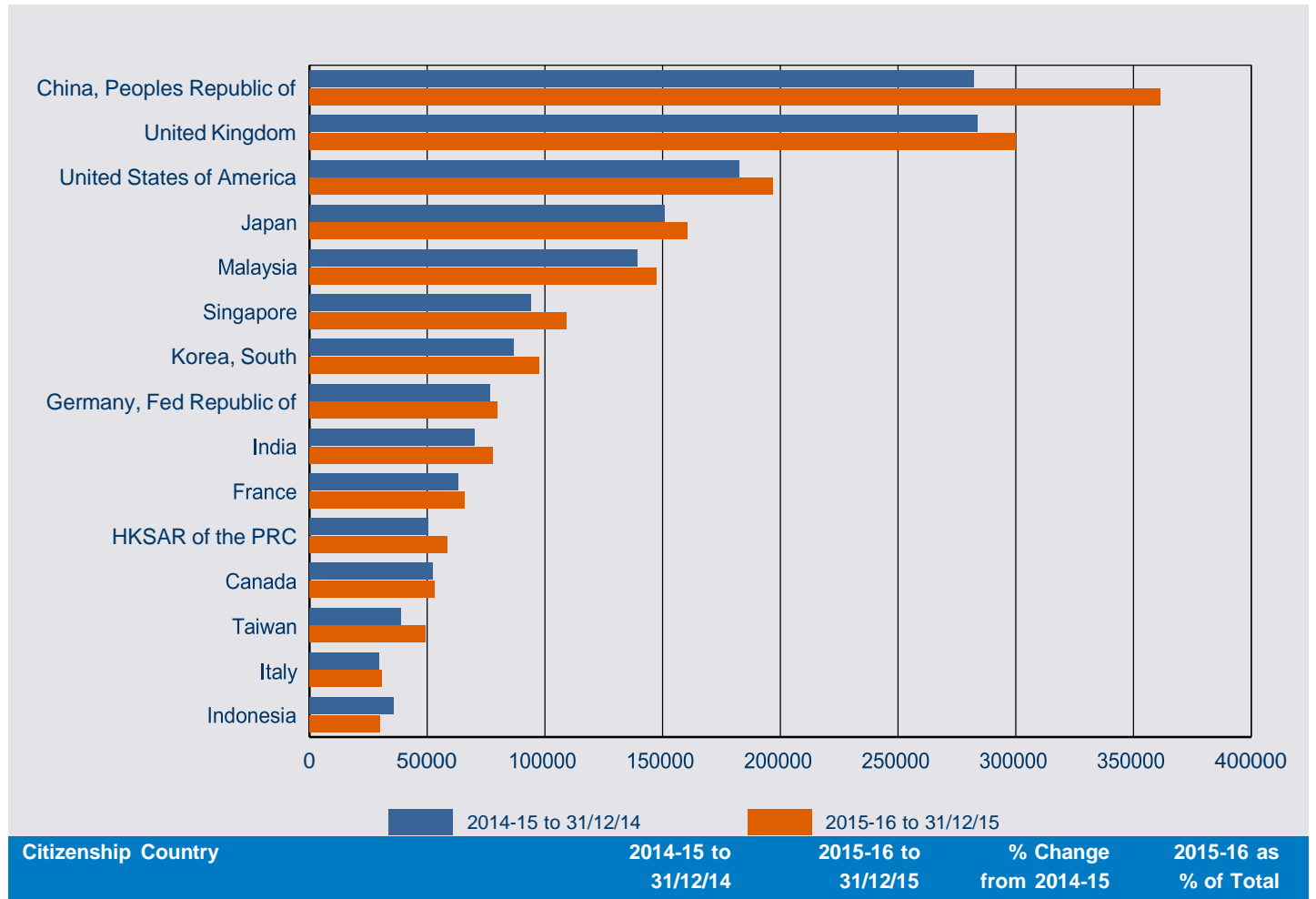


2.5 Number of business Visitor visa applications granted in 2015-16 to 31 December 2015 by visa group - comparison with same period in previous year



2 Granted

2.6 Number of tourism Visitor visa applications granted in 2015-16 to 31 December 2015 by citizenship country - comparison with same period in previous year

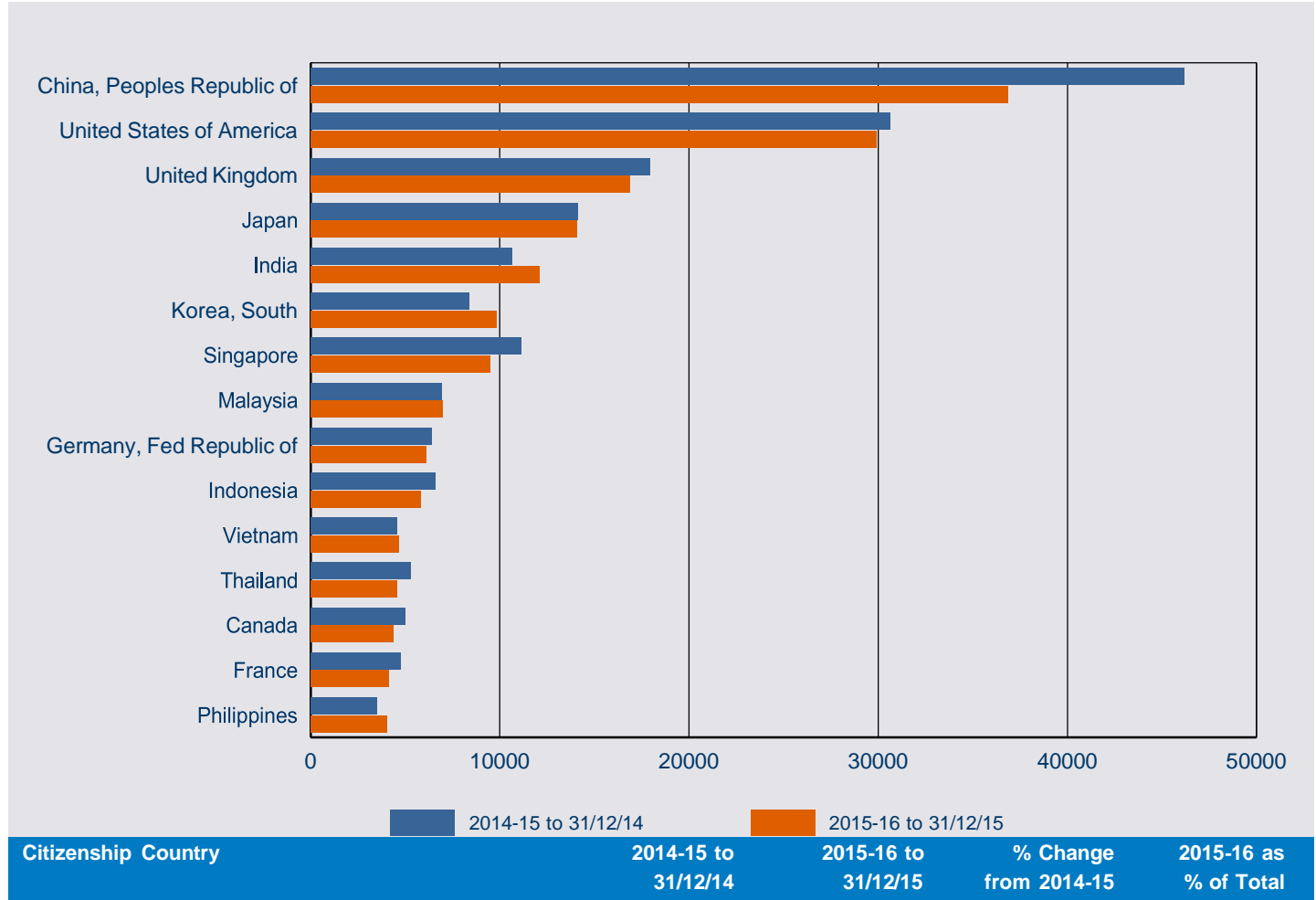


Tourism

Citizenship Country	2014-15 to 31/12/14	2015-16 to 31/12/15	% Change from 2014-15	2015-16 as % of Total
China, Peoples Republic of	282,119	361,472	28.1%	16.3%
United Kingdom	283,548	300,076	5.8%	13.6%
United States of America	182,389	196,842	7.9%	8.9%
Japan	150,722	160,590	6.5%	7.3%
Malaysia	139,296	147,589	6.0%	6.7%
Singapore	93,937	109,121	16.2%	4.9%
Korea, South	86,558	97,648	12.8%	4.4%
Germany, Fed Republic of	76,733	79,855	4.1%	3.6%
India	70,070	77,683	10.9%	3.5%
France	63,245	66,061	4.5%	3.0%
HKSAR of the PRC	50,222	58,548	16.6%	2.6%
Canada	52,459	53,198	1.4%	2.4%
Taiwan	38,811	49,401	27.3%	2.2%
Italy	29,434	30,670	4.2%	1.4%
Indonesia	35,874	29,913	-16.6%	1.4%
Other countries	374,640	393,669	5.1%	17.8%
Tourism total	2,010,057	2,212,336	10.1%	100.0%

2 Granted

2.7 Number of business Visitor visa applications granted in 2015-16 to 31 December 2015 by citizenship country - comparison with same period in previous year



Business

Citizenship Country	2014-15 to 31/12/14	2015-16 to 31/12/15	% Change from 2014-15	2015-16 as % of Total
China, Peoples Republic of	46,168	36,852	-20.2%	17.6%
United States of America	30,657	29,891	-2.5%	14.3%
United Kingdom	17,956	16,881	-6.0%	8.0%
Japan	14,151	14,064	-0.6%	6.7%
India	10,642	12,107	13.8%	5.8%
Korea, South	8,357	9,817	17.5%	4.7%
Singapore	11,112	9,514	-14.4%	4.5%
Malaysia	6,942	6,977	0.5%	3.3%
Germany, Fed Republic of	6,385	6,099	-4.5%	2.9%
Indonesia	6,581	5,838	-11.3%	2.8%
Vietnam	4,596	4,683	1.9%	2.2%
Thailand	5,296	4,583	-13.5%	2.2%
Canada	5,025	4,359	-13.3%	2.1%
France	4,738	4,128	-12.9%	2.0%
Philippines	3,534	4,056	14.8%	1.9%
Other countries	46,847	39,894	-14.8%	19.0%
Business total	228,987	209,743	-8.4%	100.0%

This page is left blank intentionally.

3 Grant rate

For this section:

A grant rate is defined as:

$$\frac{\text{Number of grants}}{\text{Number of decisions}} \times 100$$

where the number of decisions equals the number of grants plus the number of refusals.

A grant rate of 0.00% indicates that no applications were decided during the reporting period.

3 Grant rate

3.1 Grant rate of Visitor visa applications decided in the 3 month period between 1 October 2015 and 31 December 2015 by visa group - comparison with previous four periods

Visa Group	01/10/14 to 31/12/14	01/01/15 to 31/03/15	01/04/15 to 30/06/15	01/07/15 to 30/09/15	01/10/15 to 31/12/15
Business					
Business Visitor	96.2%	95.2%	95.2%	94.7%	95.1%
ETA Business	100.0%	100.0%	100.0%	100.0%	100.0%
eVisitor Business	97.7%	98.3%	98.3%	98.3%	98.5%
All Business	97.8%	97.6%	97.4%	97.0%	97.3%
Tourism					
ETA Tourist	100.0%	100.0%	100.0%	100.0%	100.0%
eVisitor Tourist	99.2%	98.9%	98.9%	99.0%	99.3%
Sponsored Tourist	75.9%	70.2%	66.4%	66.7%	67.4%
Tourist Visitor	93.5%	91.5%	91.6%	91.1%	92.0%
All Tourism	97.7%	96.8%	96.6%	96.6%	97.1%
All	97.7%	96.9%	96.7%	96.7%	97.1%

3 Grant rate

3.2 Grant rate for Tourist Visitor visa applications decided in the 3 month period between 1 October 2015 and 31 December 2015 by citizenship country - comparison with previous four periods

Citizenship Country	01/10/14 to 31/12/14	01/01/15 to 31/03/15	01/04/15 to 30/06/15	01/07/15 to 30/09/15	01/10/15 to 31/12/15
China, Peoples Republic of	96.2%	95.9%	94.2%	94.1%	95.7%
India	93.9%	89.4%	92.2%	91.6%	92.5%
Indonesia	94.8%	94.6%	96.7%	94.1%	93.2%
Philippines	86.1%	88.8%	86.2%	84.9%	84.1%
South Africa	99.3%	98.4%	97.9%	98.3%	98.5%
Vietnam	88.5%	91.5%	89.3%	86.5%	86.8%
Thailand	89.8%	92.0%	90.2%	90.3%	90.6%
Brazil	99.3%	98.4%	98.1%	98.5%	98.8%
Sri Lanka	95.6%	94.1%	92.2%	87.8%	85.5%
Fiji	87.2%	79.3%	77.3%	83.4%	85.1%
Papua New Guinea	97.7%	92.1%	94.1%	95.6%	91.2%
Russian Federation	93.7%	89.0%	85.9%	74.7%	74.4%
Argentina	98.5%	98.8%	97.4%	99.0%	99.3%
Chile	98.5%	98.2%	97.8%	98.6%	99.0%
United Kingdom	93.9%	92.1%	91.5%	95.2%	92.8%
Other countries	85.2%	76.2%	80.6%	80.8%	80.6%
All Tourist Visitor	93.5%	91.5%	91.6%	91.1%	92.0%

3.3 Grant rate for Sponsored Tourist visa applications decided in the 3 month period between 1 October 2015 and 31 December 2015 by citizenship country - comparison with previous four periods

Citizenship Country	01/10/14 to 31/12/14	01/01/15 to 31/03/15	01/04/15 to 30/06/15	01/07/15 to 30/09/15	01/10/15 to 31/12/15
Vietnam	74.4%	71.5%	64.3%	63.8%	65.6%
India	89.6%	83.5%	75.2%	73.0%	78.2%
Bangladesh	92.8%	85.5%	82.6%	86.1%	86.9%
Philippines	78.9%	73.9%	70.5%	69.9%	66.5%
China, Peoples Republic of	85.5%	78.0%	73.1%	72.9%	72.7%
Sri Lanka	88.4%	86.5%	72.2%	77.4%	85.8%
Nepal	88.7%	85.0%	80.6%	80.7%	83.3%
Cambodia	79.7%	80.5%	67.7%	62.8%	71.7%
Pakistan	73.7%	57.9%	66.4%	65.2%	57.3%
Iran	57.2%	58.4%	52.9%	54.3%	57.8%
Zimbabwe	69.9%	57.6%	70.0%	67.0%	73.7%
Lebanon	37.1%	25.3%	29.8%	25.9%	19.6%
South Africa	78.6%	82.7%	87.1%	74.4%	83.9%
Thailand	76.3%	68.6%	55.7%	60.7%	63.3%
Russian Federation	85.9%	93.9%	87.5%	86.0%	78.6%
Other countries	64.6%	57.5%	51.7%	54.5%	53.3%
All Sponsored Tourist	75.9%	70.2%	66.4%	66.7%	67.4%

3 Grant rate

3.4 Grant rate for Business Visitor visa applications decided in the 3 month period between 1 October 2015 and 31 December 2015 by citizenship country - comparison with previous four periods

Citizenship Country	01/10/14 to 31/12/14	01/01/15 to 31/03/15	01/04/15 to 30/06/15	01/07/15 to 30/09/15	01/10/15 to 31/12/15
China, Peoples Republic of	96.9%	95.3%	95.0%	93.6%	96.4%
India	93.6%	94.3%	94.7%	95.2%	95.8%
Indonesia	98.7%	96.6%	98.5%	94.7%	97.1%
Korea, South	100.0%	100.0%	100.0%	99.9%	99.9%
Vietnam	97.9%	96.4%	96.8%	96.3%	95.9%
Singapore	99.9%	100.0%	99.9%	100.0%	99.9%
Philippines	97.0%	97.0%	96.4%	96.4%	95.0%
Thailand	99.7%	99.8%	99.4%	99.6%	99.3%
Japan	100.0%	99.9%	99.7%	99.6%	99.8%
South Africa	99.0%	98.3%	98.1%	99.4%	97.6%
Malaysia	99.5%	99.5%	99.2%	99.8%	99.9%
Papua New Guinea	98.8%	98.1%	99.6%	98.4%	97.5%
Taiwan	99.3%	99.2%	99.9%	99.8%	99.6%
United States of America	96.8%	94.6%	93.4%	93.5%	95.1%
Fiji	92.9%	94.4%	91.7%	93.9%	95.1%
Other countries	91.1%	88.5%	87.7%	87.8%	83.4%
All Business Visitor	96.2%	95.2%	95.2%	94.7%	95.1%

3 Grant rate

3.5 Grant rate for subclass 651 eVisitor visa applications decided in the 3 month period between 1 October 2015 and 31 December 2015 by citizenship country - comparison with previous four periods

Citizenship Country	01/10/14 to 31/12/14	01/01/15 to 31/03/15	01/04/15 to 30/06/15	01/07/15 to 30/09/15	01/10/15 to 31/12/15
Andorra	92.3%	96.3%	100.0%	100.0%	100.0%
Austria	99.5%	98.9%	99.8%	99.4%	99.6%
Belgium	99.7%	99.2%	99.3%	99.4%	99.7%
Bulgaria	83.3%	75.4%	76.6%	80.1%	85.5%
Croatia	86.7%	80.7%	84.8%	84.7%	88.4%
Cyprus	99.1%	99.4%	99.1%	97.9%	99.6%
Czech Republic	99.1%	99.1%	98.7%	99.0%	99.3%
Denmark	99.7%	99.5%	99.3%	99.6%	99.8%
Estonia	97.1%	97.0%	94.2%	95.8%	98.2%
Finland	99.6%	99.0%	98.4%	99.5%	99.8%
France	99.4%	99.3%	99.3%	99.4%	99.4%
Germany, Fed Republic of	99.6%	99.5%	99.5%	99.6%	99.7%
Greece	98.8%	97.7%	96.4%	96.1%	98.1%
HKSAR of the PRC	25.0%	0.0%	0.0%	0.0%	100.0%
Hungary	97.2%	97.1%	97.5%	97.8%	98.1%
Iceland	98.7%	98.5%	100.0%	100.0%	99.2%
Ireland, Republic of	99.5%	98.9%	98.9%	99.1%	99.0%
Italy	99.2%	98.9%	99.0%	99.3%	99.4%
Latvia	91.9%	88.4%	88.8%	89.5%	93.1%
Liechtenstein	100.0%	100.0%	100.0%	100.0%	100.0%
Lithuania	94.9%	92.0%	89.2%	93.5%	94.3%
Luxembourg	100.0%	94.5%	100.0%	100.0%	100.0%
Malta	98.7%	97.4%	98.6%	100.0%	98.9%
Monaco	100.0%	100.0%	100.0%	100.0%	100.0%
Netherlands, Kingdom of The	99.2%	99.3%	99.5%	99.4%	99.4%
Norway	99.2%	98.4%	98.8%	98.9%	99.5%
Poland	99.6%	99.4%	99.4%	99.5%	99.6%
Portugal	99.6%	99.4%	99.7%	99.5%	99.2%
Romania	76.4%	70.4%	69.5%	73.7%	82.8%
San Marino	100.0%	100.0%	0.0%	100.0%	100.0%
Slovakia	97.4%	97.8%	94.6%	95.5%	98.3%
Slovenia	99.6%	99.6%	99.4%	99.3%	98.8%
Spain	98.7%	98.8%	98.8%	99.1%	99.4%
Sweden	99.7%	99.5%	99.3%	99.3%	99.7%
Switzerland	99.3%	99.1%	99.2%	99.6%	99.6%
United Kingdom	99.6%	99.4%	99.3%	99.5%	99.5%
Vatican City State Holy See	33.3%	33.3%	33.3%	80.0%	100.0%
All	99.1%	98.9%	98.8%	99.0%	99.3%

This page is left blank intentionally.

4 Processing times

This section contains information on 25, 50 and 75 percentile processing times for visitor visa applications.

In general terms:

25 percentile means that 25 per cent of applications granted during the period were processed within the number of days shown in the tables. Conversely, 75 per cent took longer than the number of days shown. This measure gives an indication of how long it is taking to process the more straight-forward visitor visa applications.

50 percentile more commonly known as the median, it means that 50 per cent of applications granted during the period were processed within the number of days shown in the tables. Conversely, 50 per cent took longer than the number of days shown. This measure gives an indication of how long it is taking to process the typical visitor visa applications.

75 percentile means that 75 per cent of applications granted during the period were processed within the number of days shown in the tables. Conversely, 25 per cent took longer than the number of days shown. This measure gives an indication of how long it is taking to process the more complex visitor visa applications.

4 Processing times

4.1 Processing time (in calendar days) for Tourist Visitor visa applications granted in the 3 month period between 1 October 2015 and 31 December 2015 by citizenship country - comparison with previous four periods

Citizenship country	Percentile	1/10/14 to 31/12/14	1/01/15 to 31/03/15	1/04/15 to 30/06/15	1/07/15 to 30/09/15	1/10/15 to 31/12/15
China, Peoples Republic of	25th percentile	2	1	1	1	1
	50th percentile (Median)	4	3	3	3	3
	75th percentile	7	6	6	5	5
India	25th percentile	3	2	2	2	4
	50th percentile (Median)	6	6	6	5	7
	75th percentile	10	9	10	9	11
Indonesia	25th percentile	4	4	2	0	2
	50th percentile (Median)	8	7	5	1	4
	75th percentile	11	11	7	3	7
Philippines	25th percentile	8	6	13	8	4
	50th percentile (Median)	15	13	23	24	14
	75th percentile	23	21	31	35	31
South Africa	25th percentile	9	10	19	23	13
	50th percentile (Median)	14	14	27	31	17
	75th percentile	18	20	31	35	25
Vietnam	25th percentile	14	2	2	4	7
	50th percentile (Median)	18	6	5	6	9
	75th percentile	20	13	10	8	12
Thailand	25th percentile	4	2	8	8	8
	50th percentile (Median)	6	5	10	10	10
	75th percentile	8	8	13	13	12
Brazil	25th percentile	0	0	0	0	0
	50th percentile (Median)	2	3	2	2	3
	75th percentile	4	5	5	4	7
Sri Lanka	25th percentile	4	3	5	6	7
	50th percentile (Median)	8	7	8	10	10
	75th percentile	13	12	14	16	14
Fiji	25th percentile	14	15	9	14	25
	50th percentile (Median)	25	21	15	18	29
	75th percentile	34	41	24	23	34
Other countries	25th percentile	3	3	2	2	3
	50th percentile (Median)	9	8	8	8	10
	75th percentile	20	19	18	17	19
All	25th percentile	2	2	1	2	2
	50th percentile (Median)	6	4	5	4	4
	75th percentile	12	9	10	10	10

4 Processing times

4.2 Processing time (in calendar days) for Business Visitor visa applications granted in the 3 month period between 1 October 2015 and 31 December 2015 by citizenship country - comparison with previous four periods

Citizenship country	Percentile	1/10/14 to 31/12/14	1/01/15 to 31/03/15	1/04/15 to 30/06/15	1/07/15 to 30/09/15	1/10/15 to 31/12/15
China, Peoples Republic of	25th percentile	1	1	1	1	1
	50th percentile (Median)	2	2	1	2	2
	75th percentile	5	4	4	4	4
India	25th percentile	1	1	1	1	2
	50th percentile (Median)	4	3	4	4	6
	75th percentile	7	7	7	7	8
Indonesia	25th percentile	1	1	0	0	0
	50th percentile (Median)	2	2	1	1	1
	75th percentile	4	4	3	2	3
Korea, South	25th percentile	0	0	0	0	0
	50th percentile (Median)	1	0	0	1	0
	75th percentile	1	1	1	2	3
Vietnam	25th percentile	1	1	1	1	1
	50th percentile (Median)	3	5	4	4	3
	75th percentile	6	6	10	6	7
Singapore	25th percentile	0	0	0	0	0
	50th percentile (Median)	1	1	1	1	1
	75th percentile	4	3	3	3	3
Philippines	25th percentile	1	1	3	3	1
	50th percentile (Median)	3	5	7	8	3
	75th percentile	7	8	11	13	6
Thailand	25th percentile	0	0	1	1	2
	50th percentile (Median)	1	1	1	4	4
	75th percentile	5	3	4	7	6
Japan	25th percentile	0	0	0	0	0
	50th percentile (Median)	1	0	0	1	0
	75th percentile	1	1	1	3	2
South Africa	25th percentile	3	5	7	4	1
	50th percentile (Median)	7	9	13	9	3
	75th percentile	11	14	20	14	8
Other countries	25th percentile	1	1	1	1	1
	50th percentile (Median)	5	5	4	4	5
	75th percentile	12	12	13	12	13
All	25th percentile	1	1	1	1	1
	50th percentile (Median)	2	2	2	2	3
	75th percentile	6	6	6	7	6

This page is left blank intentionally.

5 Applications on hand

5 Applications on hand

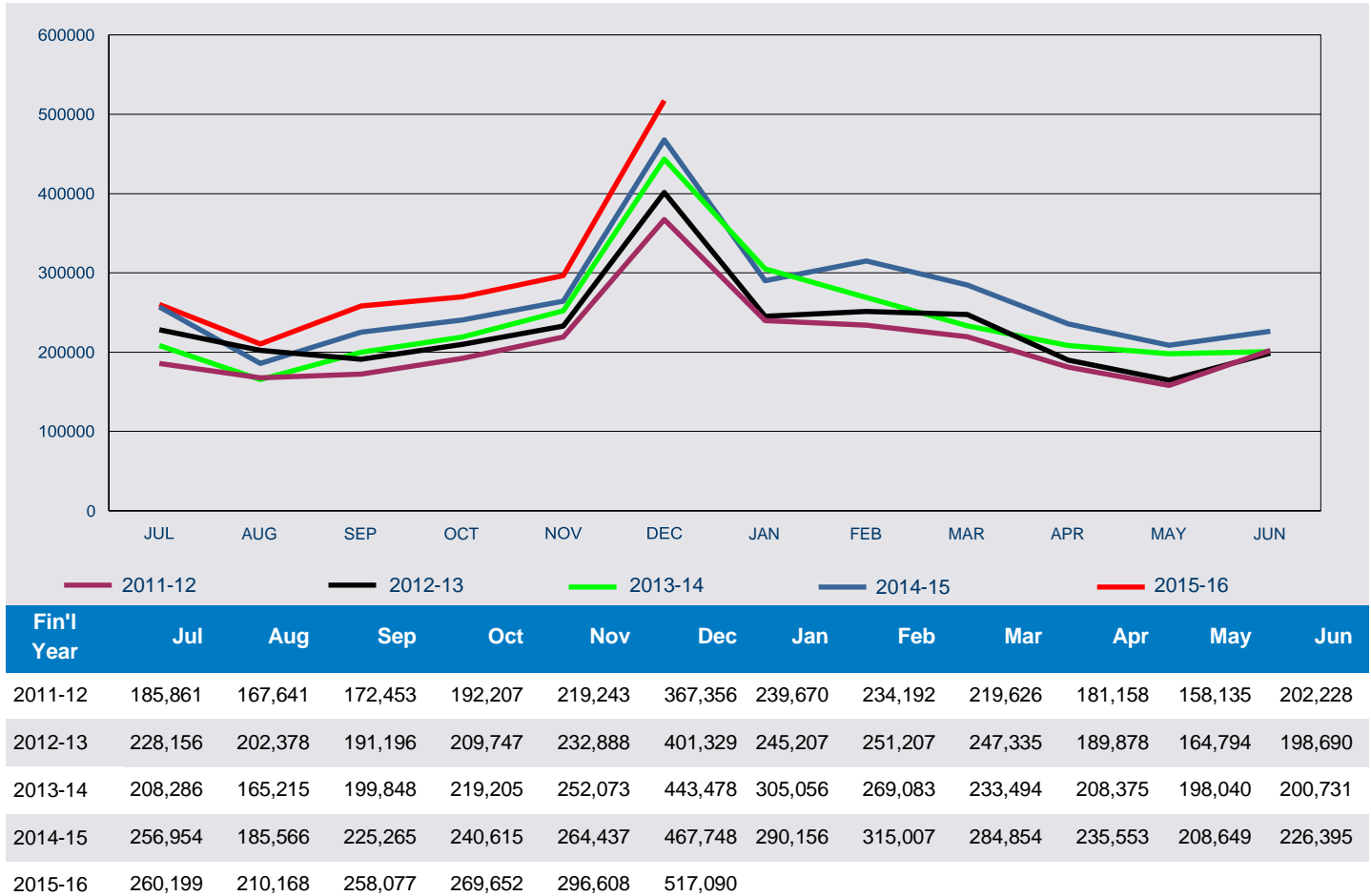
5.01 Number of Visitor visa applications on hand at 31 December 2015 by visa group - comparison with previous four periods

Visa Group	On hand at 31/12/14	On hand at 31/03/15	On hand at 30/06/15	On hand at 30/09/15	On hand at 31/12/15
Tourism					
Tourist Visitor	44,418	33,153	40,444	44,318	42,846
ETA Tourist	71	77	70	54	93
eVisitor Tourist	1,126	884	1,237	1,152	1,283
Sponsored Tourist	2,814	2,663	3,038	4,063	3,821
sub total Tourism	48,429	36,777	44,789	49,587	48,043
Business					
Business Visitor	4,670	4,516	5,533	6,537	5,519
ETA Business	11	15	15	10	12
eVisitor Business	80	143	173	85	102
Sponsored Business	0	0	0	0	0
sub total Business	4,761	4,674	5,721	6,632	5,633
Total	53,190	41,451	50,510	56,219	53,676

6 Visa holders in Australia

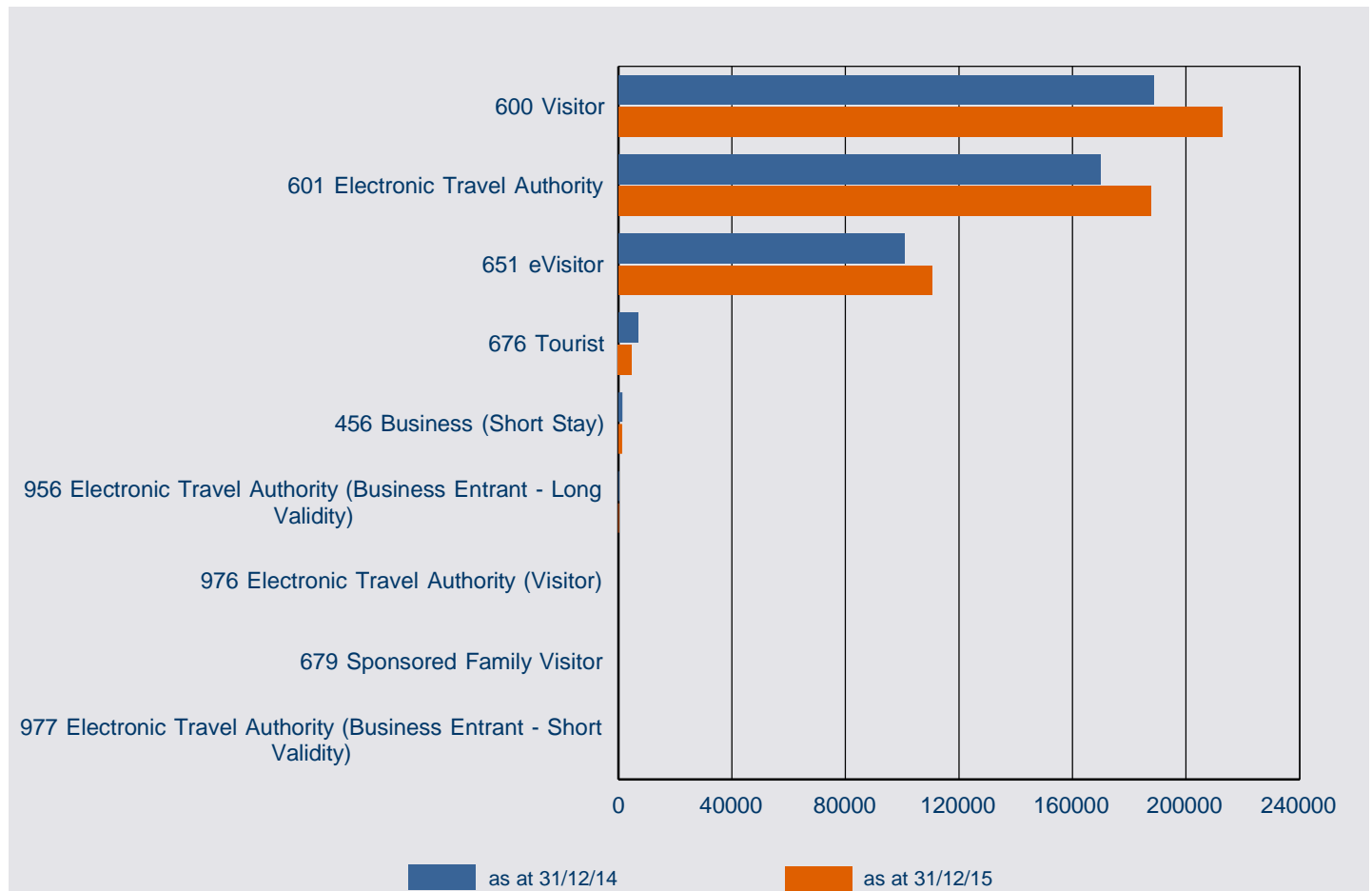
6 Visa holders in Australia

6.1 Number of Visitor visa holders in Australia at the end of each month in 2015-16 to 31 December 2015 by month - comparison with previous four financial years



6 Visa holders in Australia

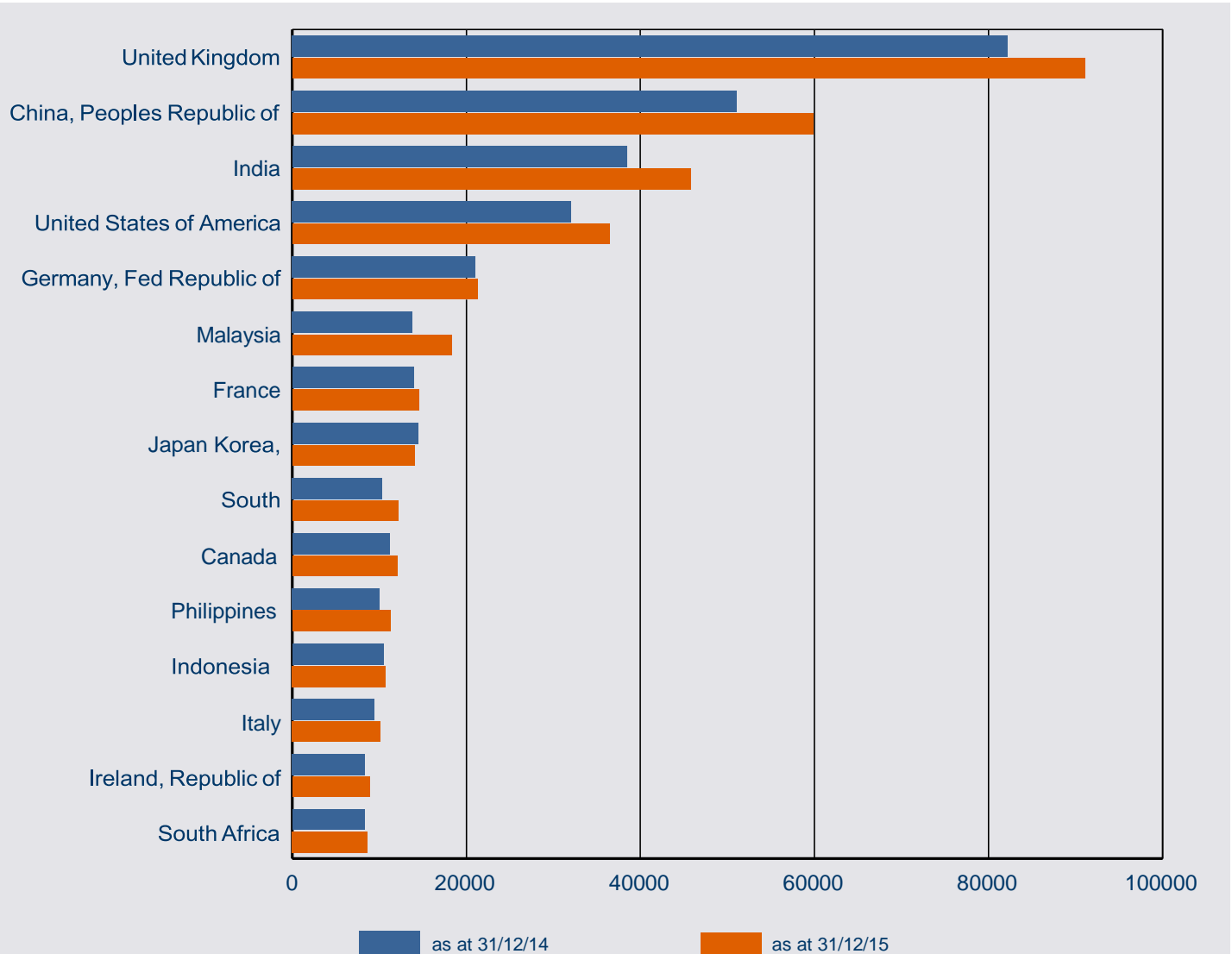
6.2 Number of Visitor visa holders in Australia as at 31 December 2015 by visa subclass - comparison with same date in previous year



Visa Subclass	as at 31/12/14	as at 31/12/15	% Change from 31/12/14	31/12/15 as % of Total
600 Visitor	188,758	212,720	12.7%	41.1%
601 Electronic Travel Authority	169,722	187,567	10.5%	36.3%
651 eVisitor	100,662	110,454	9.7%	21.4%
676 Tourist	6,822	4,772	-30.0%	0.9%
456 Business (Short Stay)	1,446	1,301	-10.0%	0.3%
956 Electronic Travel Authority (Business Entrant - Long Validity)	192	147	-23.4%	0.0%
976 Electronic Travel Authority (Visitor)	78	75	-3.8%	0.0%
679 Sponsored Family Visitor	52	38	-26.9%	0.0%
977 Electronic Travel Authority (Business Entrant - Short Validity)	16	16	0.0%	0.0%
Total	467,748	517,090	10.5%	100.0%

6 Visa holders in Australia

6.3 Number of Visitor visa holders in Australia as at 31 December 2015 by citizenship country - comparison with same period in previous year

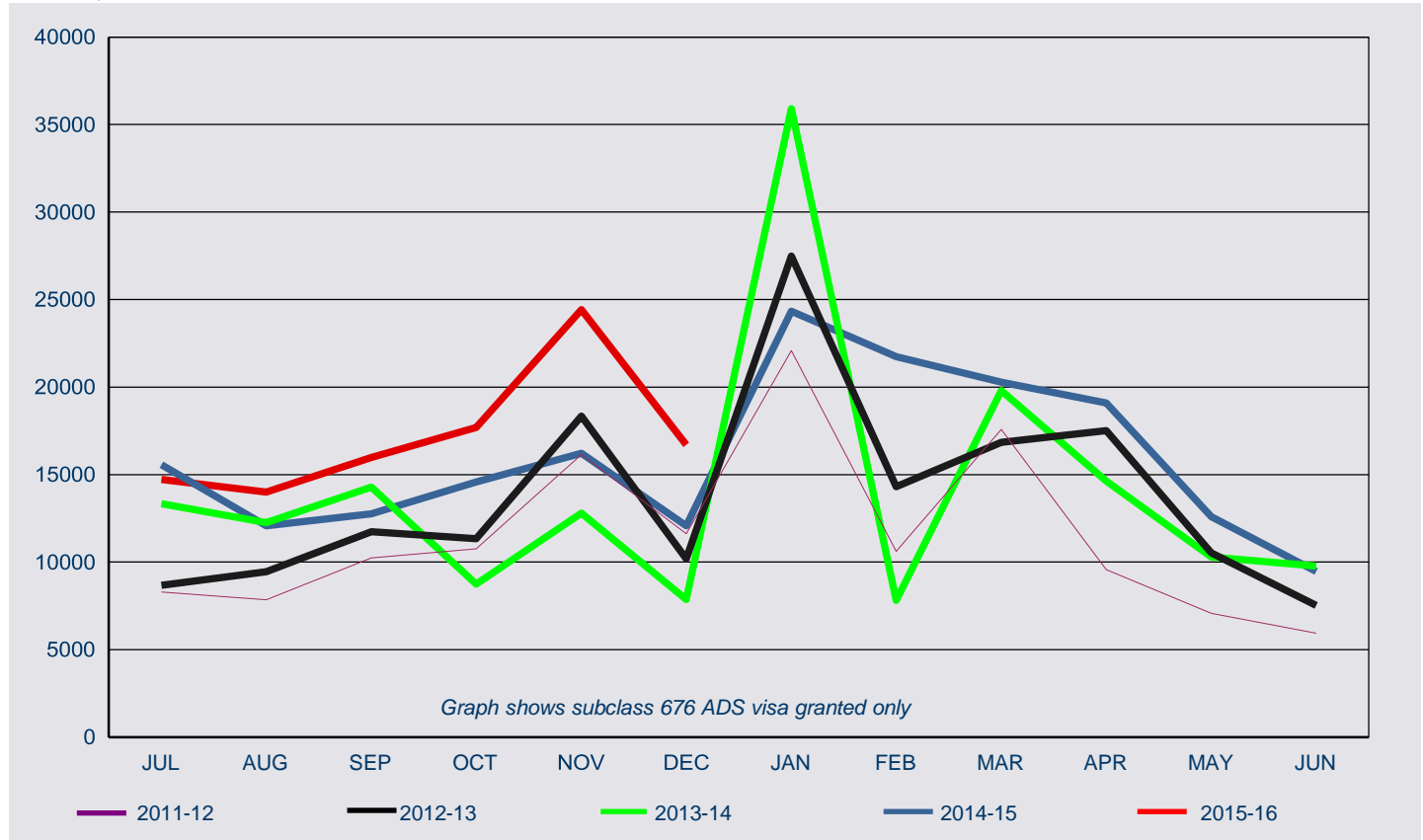


Citizenship Country	as at 31/12/14	as at 31/12/15	% Change from 31/12/14	31/12/15 as % of Total
United Kingdom	82,209	91,084	10.8%	17.6%
China, Peoples Republic of	51,080	59,847	17.2%	11.6%
India	38,424	45,801	19.2%	8.9%
United States of America	32,013	36,494	14.0%	7.1%
Germany, Fed Republic of	21,036	21,302	1.3%	4.1%
Malaysia	13,783	18,301	32.8%	3.5%
France	13,928	14,593	4.8%	2.8%
Japan	14,449	14,072	-2.6%	2.7%
Korea, South	10,324	12,165	17.8%	2.4%
Canada	11,180	12,081	8.1%	2.3%
Philippines	10,041	11,273	12.3%	2.2%
Indonesia	10,506	10,753	2.4%	2.1%
Italy	9,438	10,117	7.2%	2.0%
Ireland, Republic of	8,363	8,894	6.3%	1.7%
South Africa	8,337	8,653	3.8%	1.7%
Other countries	132,637	141,660	6.8%	27.4%
Total	467,748	517,090	10.5%	100.0%

7 Approved Destination Status (ADS)

7 Approved Destination Status (ADS)

7.01 Number of subclass 676 and subclass 600 visa applications granted in 2015-16 to 31 December 2015 under the tourism stream where the citizenship country is Peoples Republic of China (PRC) by visa type - comparison with previous four financial years



subclass 676/600 ADS for PRC

FY Granted	Jul	Aug	Sep	Oct	Nov	Dec	Jan	Feb	Mar	Apr	May	Jun	Total
2011-12	8,294	7,851	10,244	10,760	16,140	11,631	22,087	10,614	17,589	9,569	7,075	5,943	137,797
2012-13	8,673	9,445	11,728	11,340	18,336	10,181	27,492	14,305	16,839	17,511	10,522	7,522	163,894
2013-14	13,343	12,258	14,287	8,737	12,795	7,865	35,916	7,816	19,793	14,628	10,284	9,775	167,497
2014-15	15,572	12,077	12,765	14,571	16,207	12,068	24,333	21,748	20,278	19,093	12,603	9,470	190,785
2015-16	14,722	13,995	15,980	17,690	24,426	16,703	-	-	-	-	-	-	103,516

subclass 676/600 non-ADS for PRC

FY Granted	Jul	Aug	Sep	Oct	Nov	Dec	Jan	Feb	Mar	Apr	May	Jun	Total
2011-12	14,570	14,440	12,707	10,978	18,016	17,382	19,003	11,621	12,212	13,452	13,531	19,913	177,825
2012-13	18,909	18,262	17,626	15,108	20,473	19,731	33,006	10,615	14,937	15,153	16,277	20,550	220,647
2013-14	26,512	23,118	20,302	20,141	29,628	35,135	41,988	12,995	22,790	20,227	24,292	28,886	306,014
2014-15	33,023	24,364	29,732	29,598	37,201	43,101	53,650	22,572	24,934	25,713	28,572	36,355	388,815
2015-16	41,055	34,315	36,120	36,636	49,432	59,225	-	-	-	-	-	-	256,783

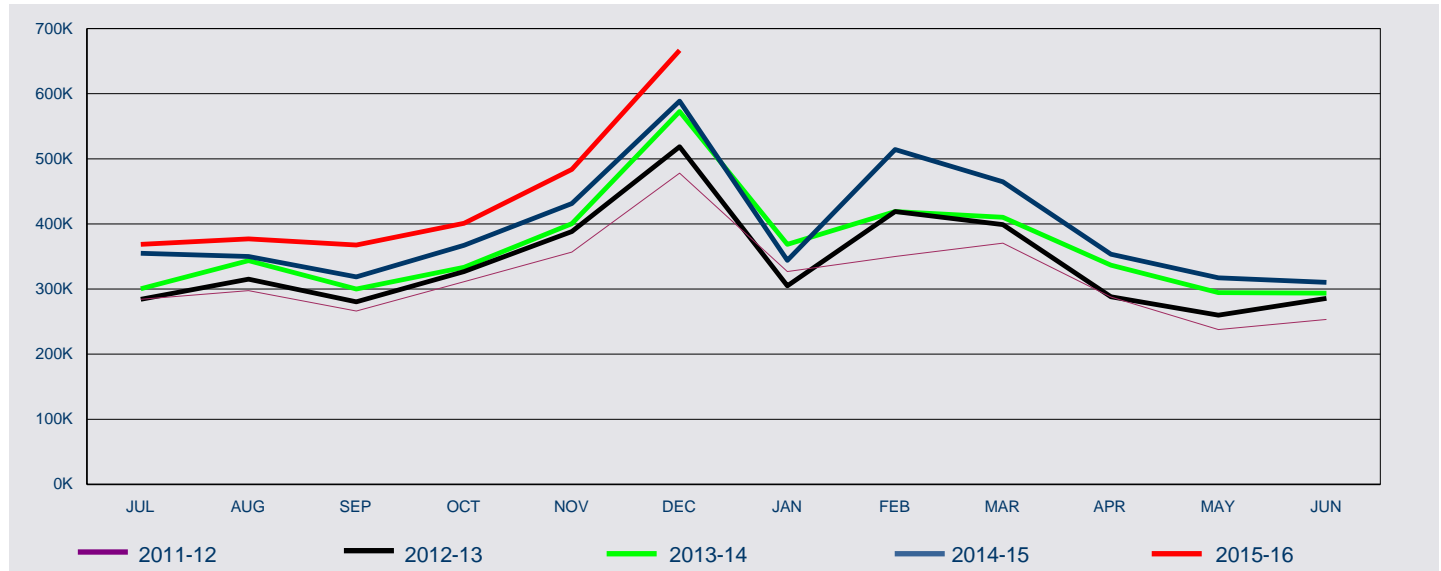
Total subclass 676/600 for PRC

FY Granted	Jul	Aug	Sep	Oct	Nov	Dec	Jan	Feb	Mar	Apr	May	Jun	Total
2011-12	22,864	22,291	22,951	21,738	34,156	29,013	41,090	22,235	29,801	23,021	20,606	25,856	315,622
2012-13	27,582	27,707	29,354	26,448	38,809	29,912	60,498	24,920	31,776	32,664	26,799	28,072	384,541
2013-14	39,855	35,376	34,589	28,878	42,423	43,000	77,904	20,811	42,583	34,855	34,576	38,661	473,511
2014-15	48,595	36,441	42,497	44,169	53,408	55,169	77,983	44,320	45,212	44,806	41,175	45,825	579,600
2015-16	55,777	48,310	52,100	54,326	73,858	75,928	-	-	-	-	-	-	360,299

8 Arrivals

8 Arrivals

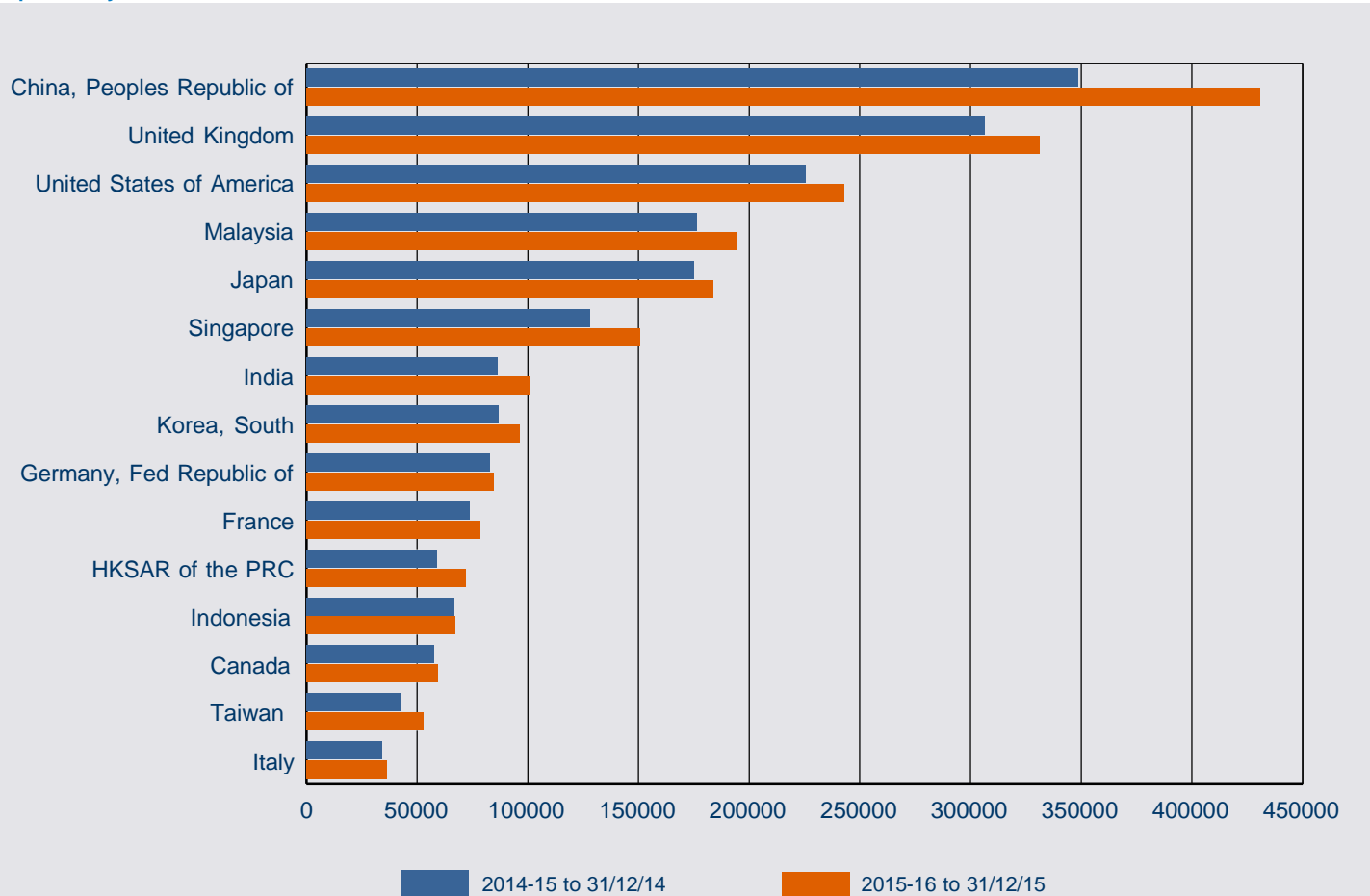
8.1 Number of Visitor visa arrivals ('000) in 2015-16 to 31 December 2015 - comparison with previous four financial years



FY Arrived	Jul	Aug	Sep	Oct	Nov	Dec	Jan	Feb	Mar	Apr	May	Jun	Total
2011-12	284	297	266	311	357	478	327	350	371	288	238	254	3,821
2012-13	284	315	280	327	388	519	305	419	399	288	260	286	4,070
2013-14	300	344	300	333	401	572	369	419	410	337	295	293	4,373
2014-15	355	350	318	367	431	589	344	514	465	354	317	310	4,714
2015-16	369	377	368	401	484	666							2,664

8 Arrivals

8.2 Number of Visitor visa arrivals in 2015-16 to 31 December 2015 by citizenship country - comparison with same period in previous year



Citizenship Country	2014-15 to 31/12/14	2015-16 to 31/12/15	% Change from 2014-15	2015-16 as % of Total
China, Peoples Republic of	348,568	431,015	23.7%	16.2%
United Kingdom	306,439	331,409	8.1%	12.4%
United States of America	225,678	243,055	7.7%	9.1%
Malaysia	176,381	194,201	10.1%	7.3%
Japan	174,863	183,823	5.1%	6.9%
Singapore	128,162	150,976	17.8%	5.7%
India	86,482	100,771	16.5%	3.8%
Korea, South	86,859	96,526	11.1%	3.6%
Germany, Fed Republic of	82,740	84,800	2.5%	3.2%
France	73,759	78,487	6.4%	2.9%
HKSAR of the PRC	58,968	72,136	22.3%	2.7%
Indonesia	66,737	67,025	0.4%	2.5%
Canada	57,776	59,543	3.1%	2.2%
Taiwan	42,966	52,784	22.9%	2.0%
Italy	34,208	36,395	6.4%	1.4%
Other countries	459,390	481,518	4.8%	18.1%
Total	2,409,976	2,664,464	10.6%	100.0%

