



Australian Government  
Department of Home Affairs



Australian  
**BORDER FORCE**

# Immigration Detention and Community Statistics Summary

31 January 2019

# Table of Contents

About this report.....	3
Enquiries.....	3
Acronyms.....	3
Immigration Detention And Community Statistics Summary.....	4
In Community under Residence Determination Population By State/Territory.....	5
Immigration Detention Population.....	6
From 1990 to 31 January 2019.....	6
People In Immigration Detention Facilities.....	7
Arrival Type.....	7
People In Immigration Detention.....	7
Nationality.....	8
Children In Immigration Detention.....	9
Time In Immigration Detention Facilities.....	11
Time In Community Under Residence Determination.....	12

## About this report

This report provides an overview of the number of people in immigration detention and Regional Processing Centres as at midnight on the date of the report. The report is produced on a monthly basis.

Data is sourced from several departmental processing and recording systems. Data relating to the immigration detention population is dynamic and there can be delays in transmission of information from the Department's immigration detention network operations. Variations in figures between this report and previous issues can occur. Due to these issues, data from the current financial year should always be considered provisional.

Further information about immigration detention is available at:

<https://www.homeaffairs.gov.au/research-and-statistics/statistics/visa-statistics/live/immigration-detention>

## Enquiries

Comments or enquiries concerning this report should be sent using the Department's client service feedback form quoting the name and date of the report.

See: <https://immi.homeaffairs.gov.au/help-support/contact-us>

## Acronyms

**Table 1 – Acronyms used in this document**

Acronym	Description
APOD	Alternative Place of Detention
IMA	Illegal Maritime Arrival
IDC/F	Immigration Detention Centre/Facility
IRH	Immigration Residential Housing
ITA	Immigration Transit Accommodation
RPC	Regional Processing Centre
S501	Section 501 of the <i>Migration Act 1958</i> (the Migration Act)
S501 Visa Cancellation	Visa cancellations based on character or related grounds

# Immigration Detention And Community Statistics Summary

At 31 January 2019, there were 1269 people held in immigration detention facilities. A further 716 people were living in the community after being approved for a residence determination and 15,442 were living in the community after grant of a Bridging E visa.

The table below reflects figures based on records in Department of Home Affairs systems.

**Table 2 – People in Immigration Detention Facilities (IDFs), Alternative Places of Detention (APODs), Regional Processing Centres (RPCs) and the Community at 31 January 2019**

Place of immigration detention	Men	Women	Children	Total	Change from Previous Summary 31/12/18
Perth IDC	17	13	0	30	- 1
Villawood IDC	448	36	0	484	- 14
Yongah Hill IDC	316	0	0	316	+ 6
Mainland APODs	5	5	<5	14	- 3
<b>Total IDCs/APODs</b>	<b>786</b>	<b>54</b>	<b>&lt;5</b>	<b>844</b>	<b>- 12</b>
Adelaide ITA	16	0	0	16	0
Brisbane ITA	151	22	0	173	+ 5
Melbourne ITA	222	13	<5	236	- 9
<b>Total in ITA</b>	<b>389</b>	<b>35</b>	<b>&lt;5</b>	<b>425</b>	<b>- 4</b>
<b>Total in IDC/F</b>	<b>1,175</b>	<b>89</b>	<b>5</b>	<b>1,269</b>	<b>- 16</b>
<b>Total in Community under Residence Determination</b>	<b>222</b>	<b>207</b>	<b>287</b>	<b>716</b>	<b>+ 20</b>
<b>Total IMA in Community on Bridging E Visa (Including people in a re-grant process)</b>	<b>11,134</b>	<b>1,855</b>	<b>2,453</b>	<b>15,442</b>	<b>- 232</b>
<b>Republic of Nauru (RPC)</b>	<b>5</b>	<b>0</b>	<b>0</b>	<b>5</b>	<b>- 5</b>
<b>Detention Group</b>					
S501 Visa Cancellation	366	24	0	390	- 19
Illegal Maritime Arrival	353	28	<5	384	+ 4
Other	456	37	<5	495	- 1
<b>Total</b>	<b>1,175</b>	<b>89</b>	<b>5</b>	<b>1,269</b>	<b>- 16</b>

## In Community under Residence Determination Population By State/Territory

Of the 716 people approved for a residence determination to live in the community, 35.3 per cent were in Queensland, 29.2 per cent in Victoria, 20.4 per cent in New South Wales, 11.5 per cent in South Australia and 3.6 per cent in Western Australia.

**Table 3 – People in the Community under Residence Determination by State/Territory at 31 January 2019**

State/Territory	Adult Male	Adult Female	Child Male (<18 years)	Child Female (<18 years)	Total
Queensland	77	74	60	42	<b>253</b>
Victoria	64	55	49	41	<b>209</b>
New South Wales	46	53	27	20	<b>146</b>
South Australia	22	20	19	21	<b>82</b>
Western Australia	13	5	<5	<5	<b>26</b>
<b>Total</b>	<b>222</b>	<b>207</b>	<b>159</b>	<b>128</b>	<b>716</b>

# Immigration Detention Population

## From January 1990 to 31 January 2019

The overall number of people in immigration detention including in the community under residence determination has increased by 251 to 1985 compared with 1734 at the end of January 2018. This number takes into account releases of detainees into the community under residence determination and detainees who were held in immigration detention facilities as at 31 January 2019.

**Figure 1 – Population in Immigration Detention**

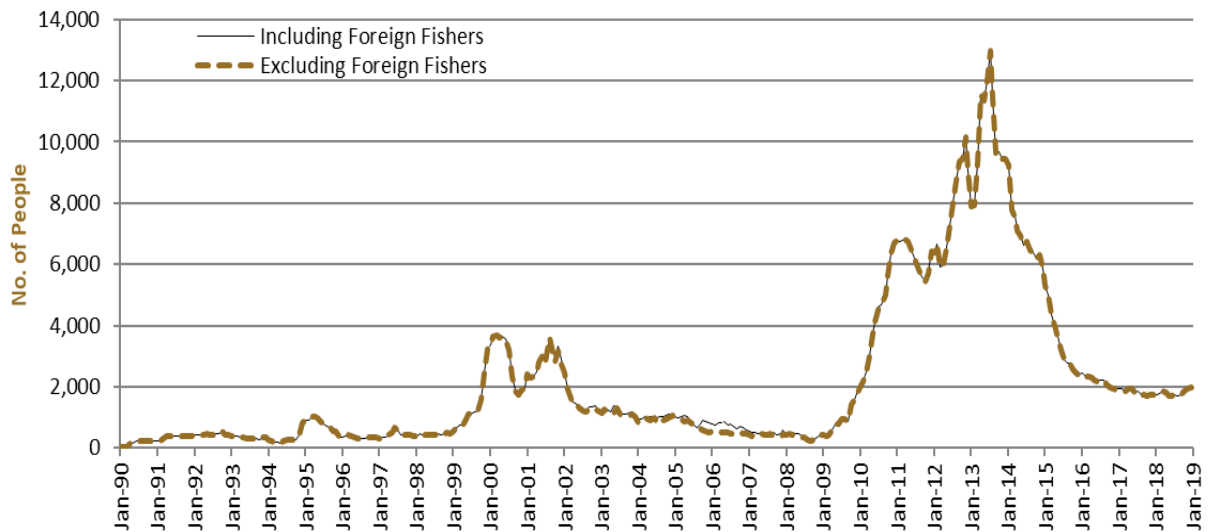


Figure 1 above, shows the number of people in immigration detention from 1990 to the date of this report. The trend had a consistent rise of people in immigration detention from January 2009 to January 2013, but has since had consistent decline.

# People In Immigration Detention Facilities

## Arrival Type

There were 427 people who arrived unlawfully by air or boat, in held immigration detention facilities at 31 January 2019 representing 33.6 per cent of the total immigration detention population.

There were also 842 people (66.4 per cent of the total immigration population) who arrived in Australia lawfully and were subsequently taken into immigration detention for either overstaying or having their visas cancelled for breaching visa conditions.

**Figure 2 – People in Held Immigration Detention Facilities by Detention Group**

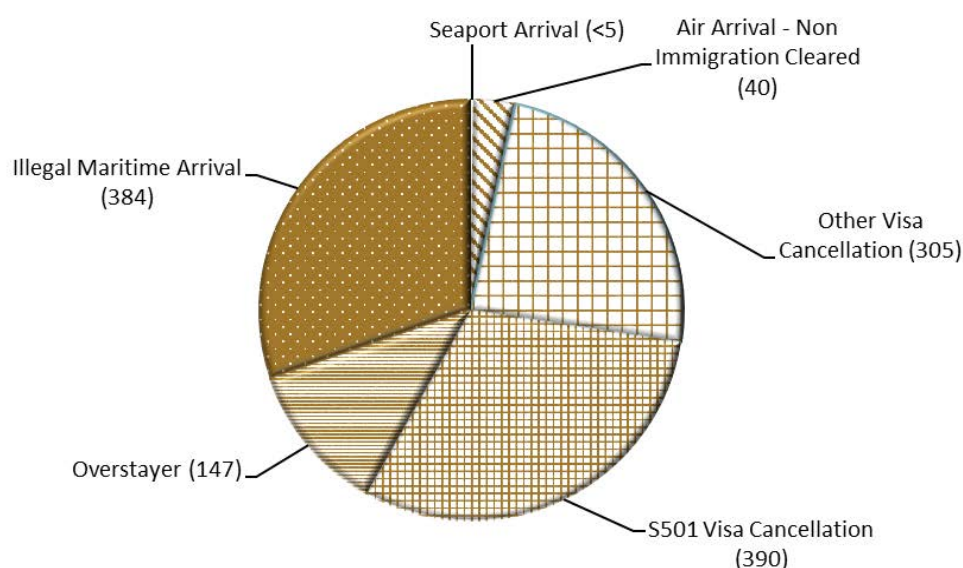


Figure 2 above, shows the number of people in held immigration detention facilities by detention group, including Overstayers, S501 and Other Visa Cancellations, Illegal Maritime Arrivals, Unauthorised Air Arrivals, and if applicable – Inadequately Documented Crew Members and Others such as stowaways and ship deserters.

**Table 4 – People in Held Immigration Detention Facilities by Detention Group at 31 January 2019**

Place of immigration detention	S501 Visa Cancellation	IMA	Other Detention Group	Total	Change from Previous Summary 31/12/18
Perth IDC	8	8	14	<b>30</b>	- 1
Villawood IDC	164	104	216	<b>484</b>	- 14
Yongah Hill IDC	139	88	89	<b>316</b>	+ 6
Mainland APODs	0	12	<5	<b>14</b>	- 3
<b>Total IDCs/APODs</b>	<b>311</b>	<b>212</b>	<b>321</b>	<b>844</b>	<b>- 12</b>
Adelaide ITA	<5	8	5	<b>16</b>	0
Brisbane ITA	25	84	64	<b>173</b>	+ 5
Melbourne ITA	51	80	105	<b>236</b>	- 9
<b>Total in IRH and ITA</b>	<b>79</b>	<b>172</b>	<b>174</b>	<b>425</b>	<b>- 4</b>
<b>Total in IDC/F</b>	<b>390</b>	<b>384</b>	<b>495</b>	<b>1,269</b>	<b>- 16</b>

# People In Immigration Detention

## Nationality

At 31 January 2019, there were 1269 people in held immigration detention facilities.

Of these 1269 people, 11.1 per cent were from Iran, 10.9 per cent were from New Zealand, 9.1 per cent were from Vietnam, 6.7 per cent were from Sri Lanka and 4.5 per cent were from Sudan.

**Table 5 – People in Held Immigration Detention Facilities by Nationality at 31 January 2019**

Nationalities	Adult Male	Adult Female	Child Male (<18 years)	Child Female (<18 years)	Total
Iran	123	18	0	0	141
New Zealand	121	17	0	0	138
Vietnam	103	12	0	0	115
Sri Lanka	78	<5	<5	<5	85
Sudan	55	<5	0	0	57
India	55	<5	0	0	56
Afghanistan	54	0	0	0	54
United Kingdom	48	<5	0	0	51
Iraq	46	<5	0	0	48
Stateless	44	<5	0	0	47
Other	448	27	<5	0	477
<b>Total</b>	<b>1,175</b>	<b>89</b>	<b>&lt;5</b>	<b>&lt;5</b>	<b>1,269</b>

At 31 January 2019, 716 were people living in the community after being approved for a residence determination. Of these 716 people, 54.2 per cent were from Iran, 12.2 per cent were Stateless, 11 per cent were from Sri Lanka, 7.5 per cent were from Somalia and 2.1 per cent were from Iraq.

**Table 6 – People in the Community under Residence Determination by Nationality at 31 January 2019**

Nationalities	Adult Male	Adult Female	Child Male (<18 years)	Child Female (<18 years)	Total
Iran	124	119	82	63	388
Stateless	26	19	16	26	87
Sri Lanka	23	19	21	16	79
Somalia	17	21	11	5	54
Iraq	7	<5	<5	<5	15
Other	25	26	26	16	93
<b>Total</b>	<b>222</b>	<b>207</b>	<b>159</b>	<b>128</b>	<b>716</b>



# Children In Immigration Detention

At 31 January 2019, there were five children (aged less than 18 years) in Immigration Residential Housing, Immigration Transit Accommodation and Alternative Places of Detention.

**Figure 3 – Children in Immigration Residential Housing, Immigration Transit Accommodation and Alternative Places of Detention**

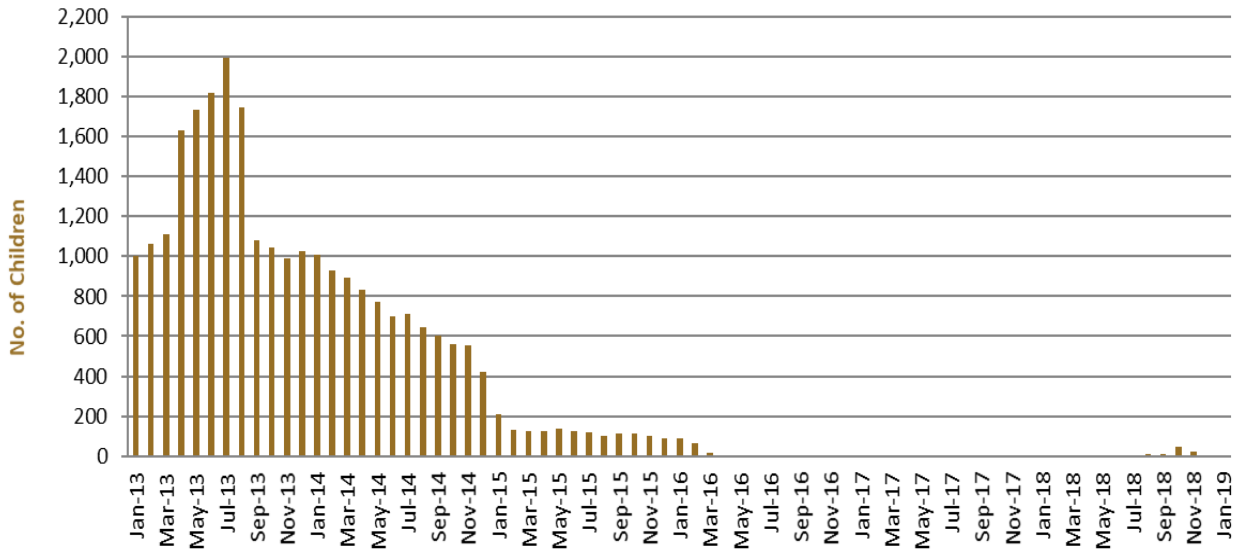


Figure 3 above, shows the number of children in immigration detention facilities and alternative places of detention from January 2013 to the date of this report. The continuous increase in the number of children in detention facilities from April 2013 to August 2013 was due to a rapid increase in illegal maritime arrivals during this period. The number of children in immigration detention facilities reduced in September 2013, as children completed mandatory processing and were transferred into the community. The number of children in detention facilities continued to decline during the late 2013 and 2014, with further reduction in January 2015. The increase in the number of children in alternative places of detention from August 2018 were following transfers from Nauru to Australia (with family members).

At 31 January 2019, the number of children living in the community after being approved for a residence determination decreased by one to 287 from 288 in the previous report.

**Figure 4 – Children in the Community under Residence Determination**

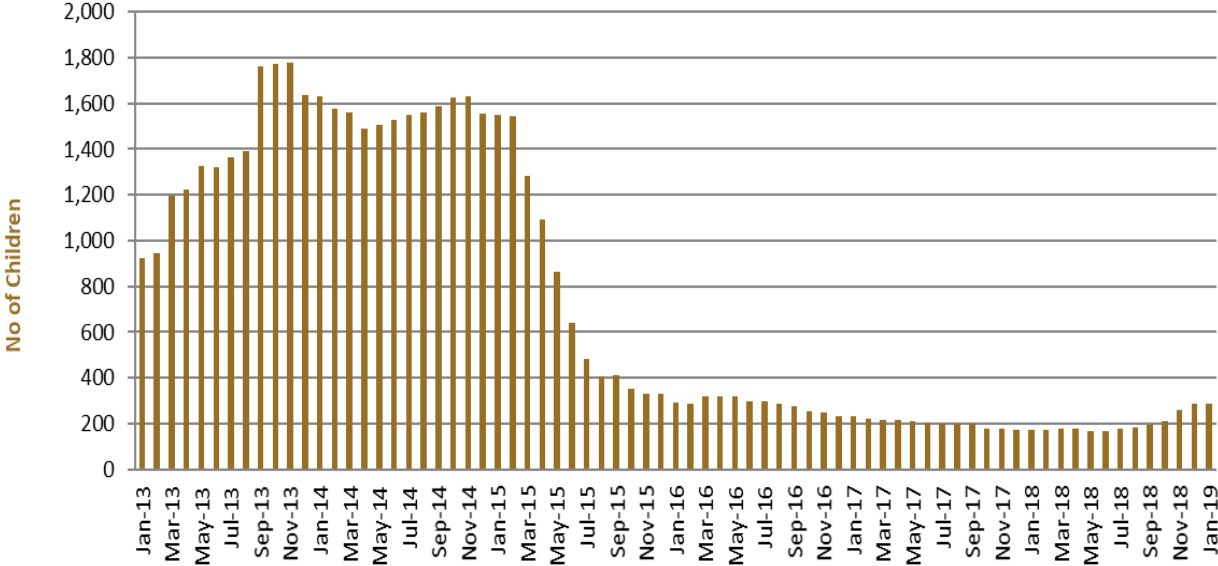


Figure 4 above, shows the number of children in the community under residence determination from January 2012 to the date of this report. The number of children in the community under residence determination, has levelled off at its lowest number since the peak in November 2013, as a result of releases into the community on Bridging E visas.

**Table 7 – Children in Immigration Detention and IMA Children in the Community on a Bridging E Visa at 31 January 2019**

Placement Type	Children
Immigration Residential Housing	0
Immigration Transit Accommodation	<5
Alternative Places of Detention	<5
<b>Total Children in Immigration Detention Facilities</b>	<b>5</b>
<b>Total Children in the Community under a Residence Determination</b>	<b>287</b>
<b>Total IMA Children in the Community on a Bridging E visa (including in re-grant process)</b>	<b>2,453</b>

## Time In Immigration Detention Facilities

At 31 January 2019, there were 1269 people in immigration detention facilities.

Of these 1269 people, 29.1 per cent had been detained for 91 days or less and 57.5 per cent had been detained for 365 days or less.

**Table 8 – Length of Time of People in Held Immigration Detention Facilities at 31 January 2019**

Period Detained	Total	% of Total
7 days or less	41	3.2%
8 days - 31 days	125	9.9%
32 days - 91 days	203	16.0%
92 days - 182 days	153	12.1%
183 days - 365 days	208	16.4%
366 days - 547 days	162	12.8%
548 days - 730 days	98	7.7%
Greater than 730 days	279	22.0%
<b>Total</b>	<b>1,269</b>	<b>100%</b>

At 31 January 2019, the average period of time for people held in detention facilities was 500 days.

**Figure 5 – Average Number of Days of People in Held Immigration Detention Facilities only**

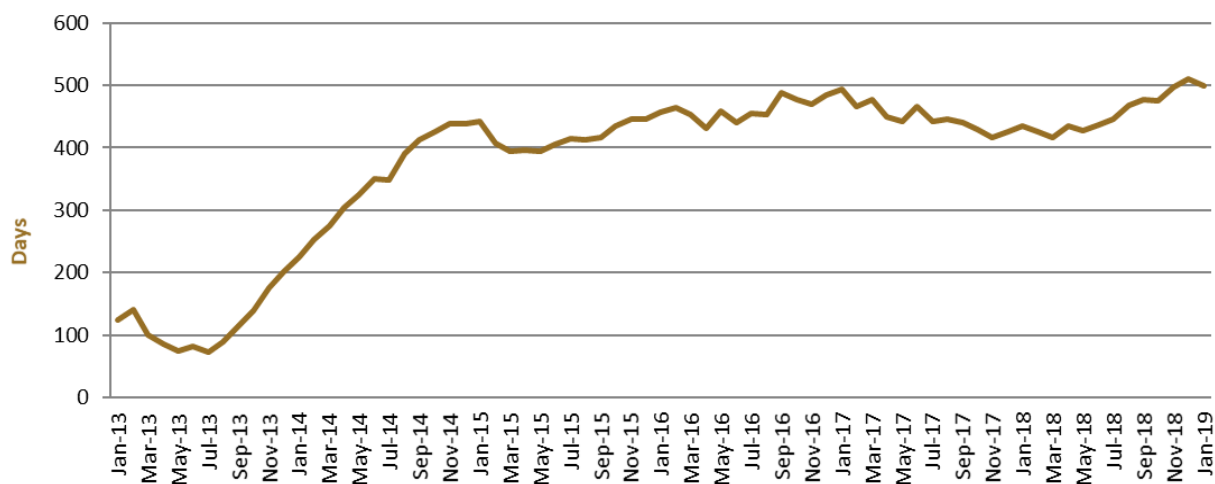


Figure 5 above, shows the average days in held immigration detention at the end of each month from January 2013 to the date of this report. The average period of time for people held in detention facilities steadily increased from July 2013 to January 2015.

## Time In Community Under Residence Determination

Of the 716 people in the community under residence determination, as at 31 January 2019, 33 per cent had been in the community for 91 days or less and 54.9 per cent had been in the community for 365 days or less.

**Table 9 – Length of Time of People in Community under Residence Determination at 31 January 2019**

Period Detained	Total	% of Total
7 days or less	<5	0.6%
8 days - 31 days	16	2.2%
32 days - 91 days	216	30.2%
92 days - 182 days	100	14.0%
183 days - 365 days	57	8.0%
366 days - 547 days	24	3.3%
548 days - 730 days	33	4.6%
Greater than 730 days	266	37.1%
<b>Total</b>	<b>716</b>	<b>100%</b>