



Australian Government
Department of Home Affairs



Australian
BORDER FORCE

Immigration Detention and Community Statistics Summary

28 February 2019

Table of Contents

About this report.....	3
Enquiries.....	3
Acronyms.....	3
Immigration Detention And Community Statistics Summary.....	4
In Community under Residence Determination Population By State/Territory.....	5
Immigration Detention Population.....	6
From 1990 to 28 February 2019.....	6
People In Immigration Detention Facilities.....	7
Arrival Type.....	7
People In Immigration Detention.....	7
Nationality.....	8
Children In Immigration Detention.....	9
Time In Immigration Detention Facilities.....	11
Time In Community Under Residence Determination.....	12

About this report

This report provides an overview of the number of people in immigration detention and Regional Processing Centres as at midnight on the date of the report. The report is produced on a monthly basis.

Data is sourced from several departmental processing and recording systems. Data relating to the immigration detention population is dynamic and there can be delays in transmission of information from the Department's immigration detention network operations. Variations in figures between this report and previous issues can occur. Due to these issues, data from the current financial year should always be considered provisional.

Further information about immigration detention is available at:

<https://www.homeaffairs.gov.au/research-and-statistics/statistics/visa-statistics/live/immigration-detention>

Enquiries

Comments or enquiries concerning this report should be sent using the Department's client service feedback form quoting the name and date of the report.

See: <https://immi.homeaffairs.gov.au/help-support/contact-us>

Acronyms

Table 1 – Acronyms used in this document

Acronym	Description
APOD	Alternative Place of Detention
IMA	Illegal Maritime Arrival
IDC/F	Immigration Detention Centre/Facility
IRH	Immigration Residential Housing
ITA	Immigration Transit Accommodation
RPC	Regional Processing Centre
S501	Section 501 of the <i>Migration Act 1958</i> (the Migration Act)
S501 Visa Cancellation	Visa cancellations based on character or related grounds

Immigration Detention And Community Statistics Summary

At 28 February 2019, there were 1272 people in immigration detention facilities. A further 732 people were living in the community after being approved for a residence determination and 15,277 were living in the community after grant of a Bridging Visa E.

The table below reflects figures based on records in Department of Home Affairs systems.

Table 2 – People in Immigration Detention Facilities (IDFs), Alternative Places of Detention (APODs), Regional Processing Centres (RPCs) and the Community at 28 February 2019

Place of immigration detention	Men	Women	Children	Total	Change from Previous Summary 31/01/19
Perth IDC	17	13	0	30	0
Villawood IDC	452	37	0	489	+ 5
Yongah Hill IDC	298	0	0	298	- 18
Mainland APODs	<5	8	<5	15	+ 1
Total IDCs/APODs	771	58	<5	832	- 12
Adelaide ITA	13	0	0	13	- 3
Brisbane ITA	160	25	0	185	+ 12
Melbourne ITA	230	11	<5	242	+ 6
Total in ITA	403	36	<5	440	+ 15
Total in IDC/F	1,174	94	<5	1,272	+ 3
Total in Community under Residence Determination	232	211	289	732	+ 16
Total IMA in Community on Bridging E Visa (Including people in a re-grant process)	11,044	1,824	2,409	15,277	- 165
Republic of Nauru (RPC)	<5	0	0	<5	- 1
Detention Group					
S501 Visa Cancellation	351	20	0	371	- 19
Illegal Maritime Arrival	356	36	<5	395	+ 11
Other	467	38	<5	506	+ 11
Total	1,174	94	<5	1,272	+ 3

In Community under Residence Determination Population By State/Territory

Of the 732 people approved for a residence determination to live in the community, 36.1 per cent were in Queensland, 30.3 per cent in Victoria, 18.9 per cent in New South Wales, 11.2 per cent in South Australia and 3.6 per cent in Western Australia.

Table 3 – People in the Community under Residence Determination by State/Territory at 28 February 2019

State/Territory	Adult Male	Adult Female	Child Male (<18 years)	Child Female (<18 years)	Total
Queensland	84	77	60	43	264
Victoria	72	58	51	41	222
New South Wales	41	51	26	20	138
South Australia	22	20	19	21	82
Western Australia	13	5	<5	<5	26
Total	232	211	160	129	732

Immigration Detention Population

From January 1990 to 28 February 2019

The overall number of people in immigration detention including in the community under residence determination has increased by 225 to 2004 compared with 1779 at the end of February 2018. This number takes into account releases of detainees into the community under residence determination and detainees who were held in immigration detention facilities as at 28 February 2019.

Figure 1 – Population in Immigration Detention

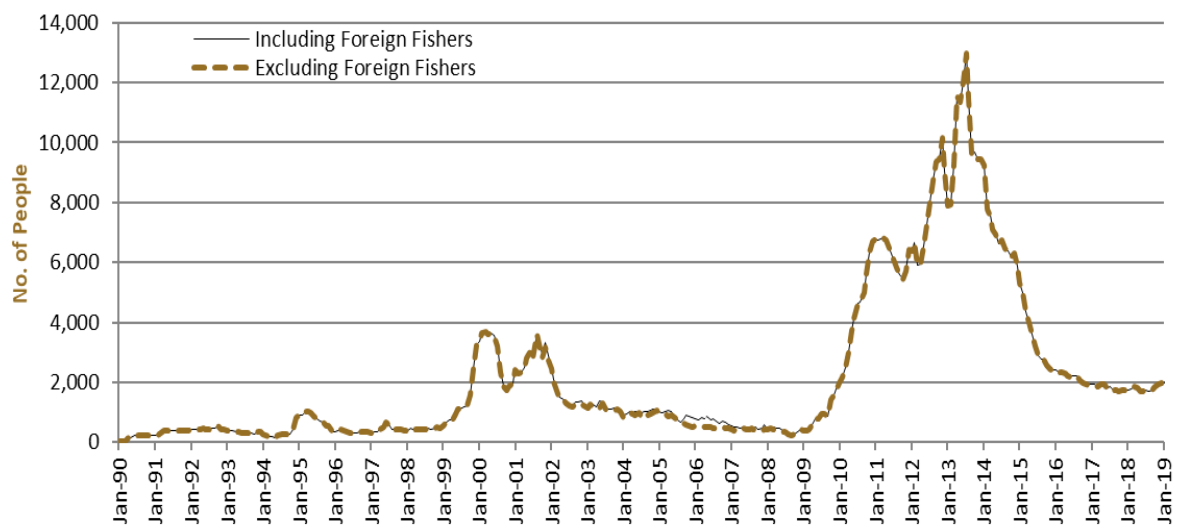


Figure 1 above, shows the number of people in immigration detention from 1990 to the date of this report. The trend had a consistent rise of people in immigration detention from January 2009 to January 2013, but has since had consistent decline.

People In Immigration Detention Facilities

Arrival Type

There were 444 people who arrived unlawfully by air or boat, in held immigration detention facilities at 28 February 2019 representing 34.9 per cent of the total immigration detention population.

There were also 828 people (65.1 per cent of the total immigration population) who arrived in Australia lawfully and were subsequently taken into immigration detention for either overstaying or having their visas cancelled for breaching visa conditions.

Figure 2 – People in Held Immigration Detention Facilities by Detention Group

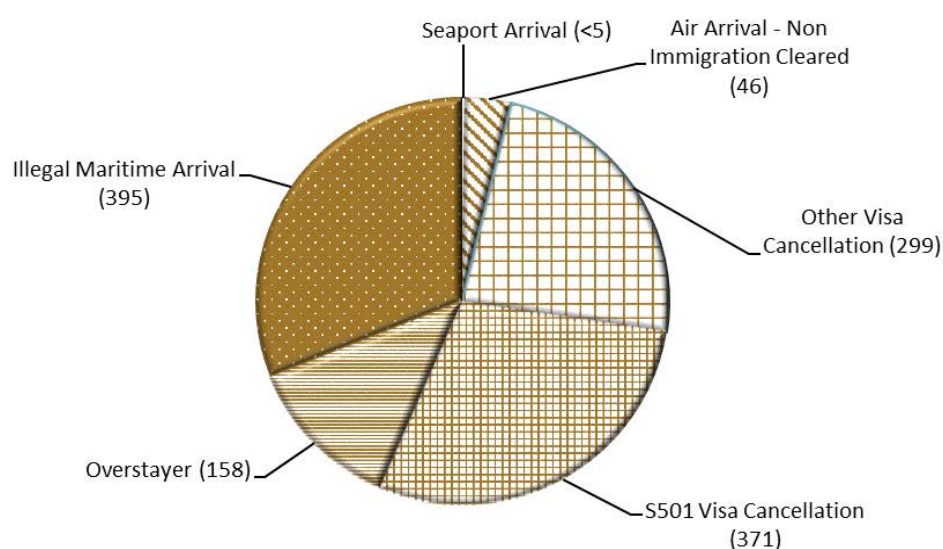


Figure 2 above, shows the number of people in held immigration detention facilities by detention group, including Overstayers, S501 and Other Visa Cancellations, Illegal Maritime Arrivals, Unauthorised Air Arrivals, and if applicable – Inadequately Documented Crew Members and Others such as stowaways and ship deserters.

Table 4 – People in Held Immigration Detention Facilities by Detention Group at 28 February 2019

Place of immigration detention	S501 Visa Cancellation	IMA	Other Detention Group	Total	Change from Previous Summary 31/01/19
Perth IDC	9	8	13	30	0
Villawood IDC	153	106	230	489	+ 5
Yongah Hill IDC	132	86	80	298	- 18
Mainland APODs	0	13	<5	15	+ 1
Total IDCs/APODs	294	213	325	832	- 12
Adelaide ITA	<5	7	<5	13	- 3
Brisbane ITA	25	95	65	185	+ 12
Melbourne ITA	49	80	113	242	+ 6
Total in IRH and ITA	77	182	181	440	+ 15
Total in IDC/F	371	395	506	1,272	+ 3

People In Immigration Detention

Nationality

At 28 February 2019, there were 1272 people in held immigration detention facilities.

Of these 1272 people, 11.3 per cent were from Iran, 9.3 per cent were from New Zealand, 8.7 per cent were from Vietnam, 6.9 per cent were from Sri Lanka and 4.5 per cent were from India.

Table 5 – People in Held Immigration Detention Facilities by Nationality at 28 February 2019

Nationalities	Adult Male	Adult Female	Child Male (<18 years)	Child Female (<18 years)	Total
Iran	124	20	0	0	144
New Zealand	106	12	0	0	118
Vietnam	102	9	0	0	111
Sri Lanka	79	6	<5	<5	88
India	57	0	0	0	57
Afghanistan	55	0	0	0	55
Iraq	52	<5	0	0	54
Stateless	47	7	0	0	54
Sudan	52	<5	0	0	54
United Kingdom	43	<5	0	0	47
Other	457	32	<5	0	490
Total	1,174	94	<5	<5	1,272

At 28 February 2019, 732 were people living in the community after being approved for a residence determination. Of these 732 people, 54.2 per cent were from Iran, 12.2 per cent were Stateless, 11.2 per cent were from Sri Lanka, 7.4 per cent were from Somalia and 2.2 per cent were from Iraq.

Table 6 – People in the Community under Residence Determination by Nationality at 28 February 2019

Nationalities	Adult Male	Adult Female	Child Male (<18 years)	Child Female (<18 years)	Total
Iran	128	122	83	64	397
Stateless	27	20	16	26	89
Sri Lanka	25	19	22	16	82
Somalia	18	21	10	5	54
Iraq	8	<5	<5	<5	16
Other	26	26	26	16	94
Total	232	211	160	129	732

Children In Immigration Detention

At 28 February 2019 there were less than five children (aged less than 18 years) in Immigration Residential Housing, Immigration Transit Accommodation and Alternative Places of Detention.

Figure 3 – Children in Immigration Residential Housing, Immigration Transit Accommodation and Alternative Places of Detention

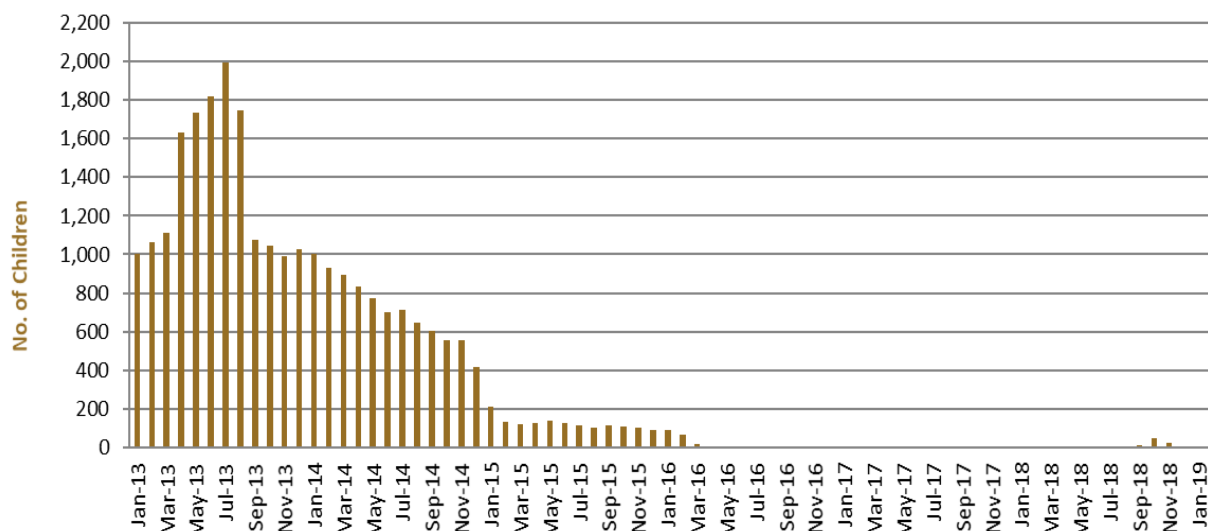


Figure 3 above, shows the number of children in immigration detention facilities and alternative places of detention from January 2013 to the date of this report. The continuous increase in the number of children in detention facilities from April 2013 to Aug 2013 was due to a rapid increase in illegal maritime arrivals during this period. The number of children in immigration detention facilities reduced in September 2013, as children completed mandatory processing and were transferred into the community. The number of children in detention facilities continued to decline during the late 2013 and 2014, with further reduction in January 2015. The increase in the number of children in alternative places of detention from August 2018 were following transfers from Nauru to Australia (with family members).

At 28 February 2019, the number of children living in the community after being approved for a residence determination increased by 16 to 732 from 716 in the previous report.

Figure 4 – Children in the Community under Residence Determination

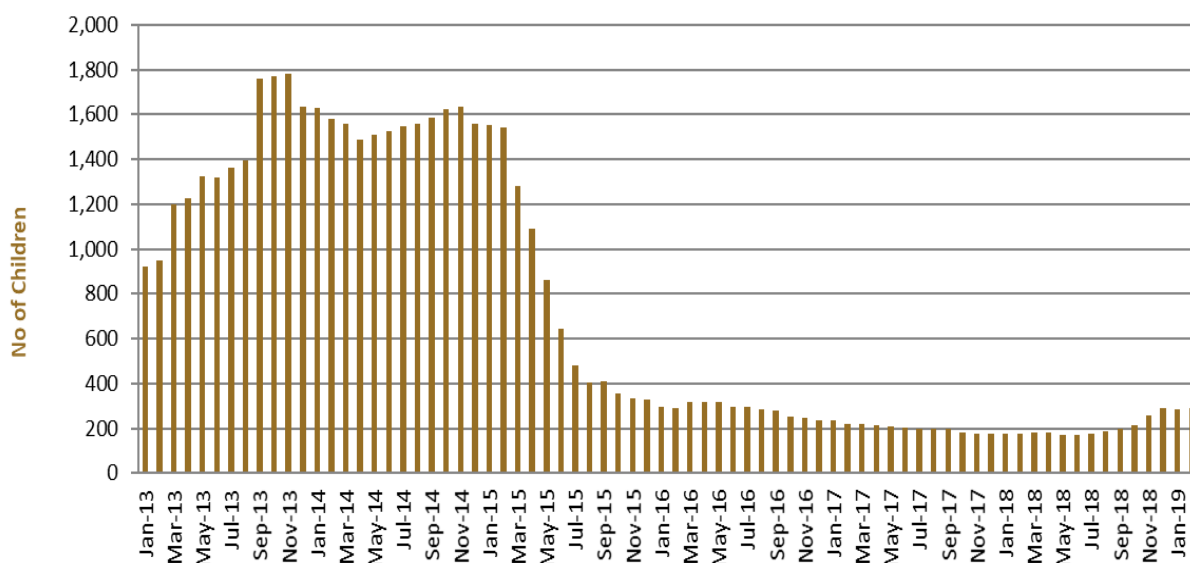


Figure 4 above, shows the number of children in the community under residence determination from January 2012 to the date of this report. The number of children in the community under residence determination, has levelled off at its lowest number since the peak in November 2013, as a result of releases into the community on Bridging E visas.

Table 7 – Children in Immigration Detention and IMA Children in the Community on a Bridging E Visa at 28 February 2019

Placement Type	Children
Immigration Residential Housing	0
Immigration Transit Accommodation	<5
Alternative Places of Detention	<5
Total Children in Immigration Detention Facilities	<5
Total Children in the Community under a Residence Determination	289
Total IMA Children in the Community on a Bridging E visa (including in re-grant process)	2,409

Time In Immigration Detention Facilities

At 28 February 2019, there were 1272 people in immigration detention facilities.

Of these 1272 people, 30.3 per cent had been detained for 91 days or less and 57.9 per cent had been detained for 365 days or less.

Table 8 – Length of Time of People in Held Immigration Detention Facilities at 28 February 2019

Period Detained	Total	% of Total
7 days or less	68	5.3%
8 days - 31 days	114	9.0%
32 days - 91 days	204	16.0%
92 days - 182 days	147	11.6%
183 days - 365 days	204	16.0%
366 days - 547 days	156	12.3%
548 days - 730 days	103	8.1%
Greater than 730 days	276	21.7%
Total	1,272	100%

At 28 February 2019, the average period of time for people held in detention facilities was 500 days.

Figure 5 – Average Number of Days of People in Held Immigration Detention Facilities only

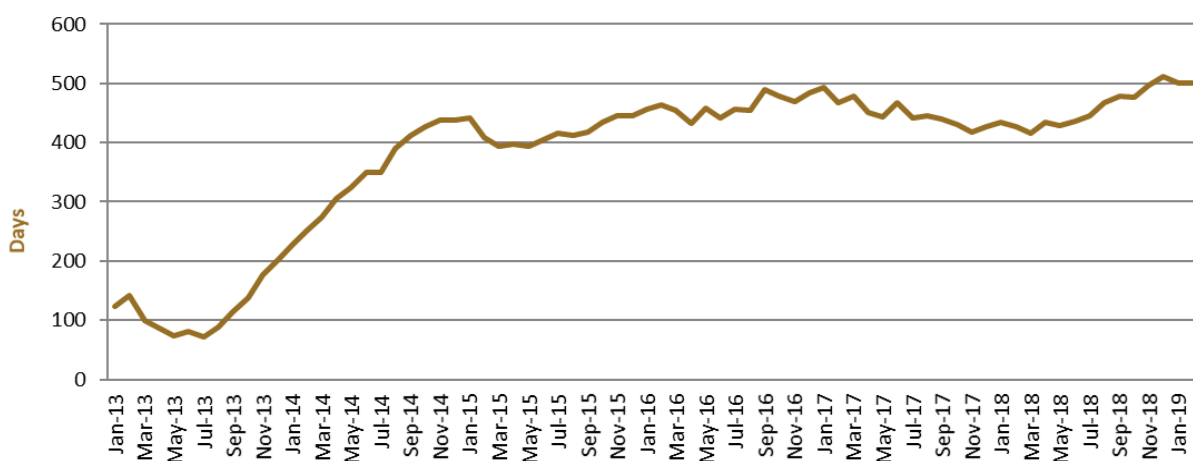


Figure 5 above, shows the average days in held immigration detention at the end of each month from January 2013 to the date of this report. The average period of time for people held in detention facilities steadily increased from July 2013 to January 2015.

Time In Community Under Residence Determination

Of the 732 people in the community under residence determination, as at 28 February 2019, 20.6 per cent had been in the community for 91 days or less and 54.6 per cent had been in the community for 365 days or less.

Table 9 – Length of Time of People in Community under Residence Determination at 28 February 2019

Period Detained	Total	% of Total
7 days or less	<5	0.3%
8 days - 31 days	19	2.6%
32 days - 91 days	130	17.8%
92 days - 182 days	202	27.6%
183 days - 365 days	47	6.4%
366 days - 547 days	30	4.1%
548 days - 730 days	27	3.7%
Greater than 730 days	275	37.6%
Total	732	100%