



Australian Government
Department of Home Affairs



Australian
BORDER FORCE

Immigration Detention and Community Statistics Summary

October 2022 (released 22 December 2022)

Table of Contents

About this report	3
Enquiries	3
Acronyms	3
Important Notice on APODs	3
Immigration Detention and Community Statistics Summary	4
In Community under Residence Determination Population by State/Territory	5
Immigration Detention Population.....	6
From January 1990 to Current.....	6
People In Immigration Detention Facilities.....	7
Arrival Type.....	7
People In Immigration Detention	9
Nationality	9
Children In Immigration Detention	10
Time In Immigration Detention Facilities	12
Time In Community Under Residence Determination	13

About this report

This report provides an overview of the number of people in onshore immigration detention, as at the morning of the first day following the end of the reporting month. The report is produced on a monthly basis.

As data is sourced from several departmental processing and recording systems, data relating to the immigration detention population is dynamic and variations between monthly reports can occur. Due to these issues, data from the current financial year should always be considered provisional.

Further information about immigration detention is available at:

<https://www.homeaffairs.gov.au/research-and-statistics/statistics/visa-statistics/live/immigration-detention>

Enquiries

Comments or enquiries concerning this report should be sent using the Department's client service feedback form quoting the name and date of the report.

See: <https://immi.homeaffairs.gov.au/help-support/contact-us>

Acronyms

Table 1 – Acronyms used in this document

Acronym	Description
APOD	Alternative Place of Detention
UMA	Unauthorised Maritime Arrival
IDC/F	Immigration Detention Centre/Facility
IRH	Immigration Residential Housing
ITA	Immigration Transit Accommodation
S501	Section 501 of the <i>Migration Act 1958</i> (the Migration Act)
S501 Visa Cancellation	Visa cancellations based on character or related grounds

Important Notice on APODs

From July 2020, detainees residing in APODs are reported under 'APODs' rather than under the ITA or IDC that had responsibility for their management and care. APODs include hospitals, aged-care facilities, mental health inpatient facilities, as well as hotel and apartment style accommodation. The number of individuals in APODs is provided by the State and Territory of the APODs.

Immigration Detention and Community Statistics Summary

At 31 October 2022, there were 1315 people in immigration detention facilities.

Of the 1315 people in immigration detention facilities, 1198 (91.1 per cent) have a criminal history.

A further 542 people were living in the community after being approved for residence determination and 10,763 UMAs were living in the community after grant of a Bridging Visa E.

The table below reflects figures based on records in Department of Home Affairs systems.

Table 2 – People in Immigration Detention Centres (IDCs), Alternative Places of Detention (APODs), Immigration Transit Accommodation (ITA) and the Community at 31 October 2022

Place of immigration detention by State*	Men	Women	Children	Total	Change from 30/09/22
NSW					
Villawood IDC	451	29	0	480	+ 10
APODs	9	<5	<5	<15	+ <10
VIC					
Melbourne ITA	199	7	0	206	- 1
APODs	<5	<5	0	<5	- <5
QLD					
Brisbane ITA	98	0	0	98	+ 8
APODs	18	7	0	25	- 8
SA					
Adelaide ITA	26	0	0	26	+ 4
APODs	0	0	0	0	0
WA					
Yongah Hill IDC	272	0	0	272	- 12
Perth IDC	12	9	0	21	- 3
APODs	<10	<5	0	8	- 7
North West Point IDC	163	0	0	163	- 10
Christmas Island APODs	0	0	0	0	0
NT					
APODs	0	0	0	0	- <5
Total IDCs	898	38	0	936	- 15
Total APODs	35	<15	<5	49	- 14
Total ITAs	323	7	0	330	+ 11
Total IDCs/APODs/ITAs	1,256	<60	<5	1,315	- 18
Total in Community under Residence Determination	230	150	162	542	+ 2
Total UMAs in Community on Bridging Visa E (Including people in a re-grant process)	8,164	1,234	1,365	10,763	- 26

* Refer to Important Notice on APODs on page 3.

In Community under Residence Determination Population by State/Territory

Of the 542 people approved for a residence determination to live in the community, 47.8 per cent were in Victoria, 31.9 per cent in Queensland, 15.7 per cent in New South Wales, 3.0 per cent in South Australia and 1.7 per cent in Western Australia.

Table 3 – People in the Community under Residence Determination by State/Territory at 31 October 2022

State/Territory	Men	Women	Children	Total
New South Wales	36	27	22	85
Victoria	107	75	77	259
Queensland	71	43	59	173
South Australia	11	<5	<5	16
Western Australia	5	<5	<5	9
Total	230	150	162	542

Immigration Detention Population

From January 1990 to Current

The overall number of people in immigration detention including in the community under residence determination has decreased by 215 to 1857 compared with 2072 at the end of October 2021. This number takes into account detainees in the community under residence determination and detainees who were held in immigration detention facilities as at 31 October 2022.

Figure 1 – Population in Immigration Detention

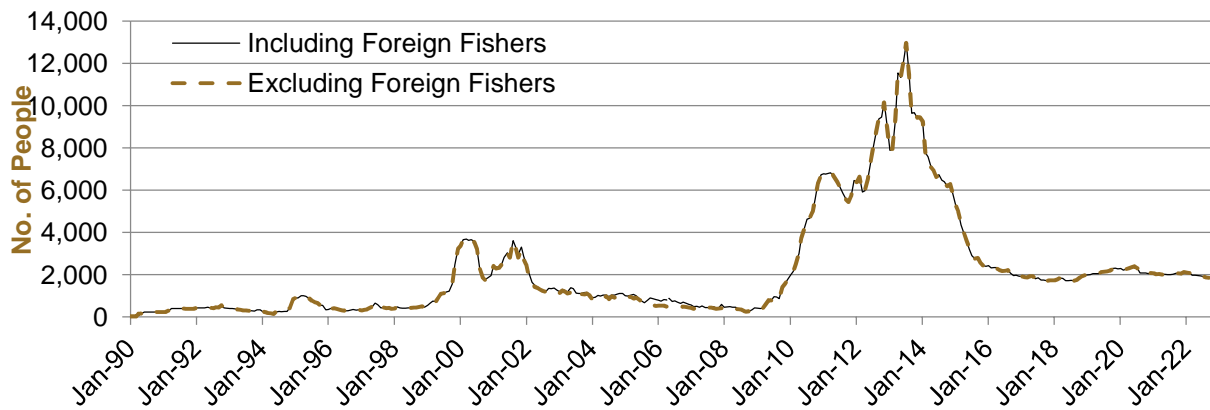


Figure 1 above, shows the number of people in immigration detention from 1990 to 2022.

People In Immigration Detention Facilities

Arrival Type

There were 211 people who arrived unlawfully by air or boat, in held immigration detention facilities at 31 October 2022 representing 16 per cent of the total immigration detention population.

There were also 1104 people (84 per cent of the total immigration detention population) who arrived in Australia lawfully and were subsequently taken into immigration detention for either overstaying or having their visas cancelled for breaching visa conditions.

Figure 2 – People in Held Immigration Detention Facilities by Detention Group

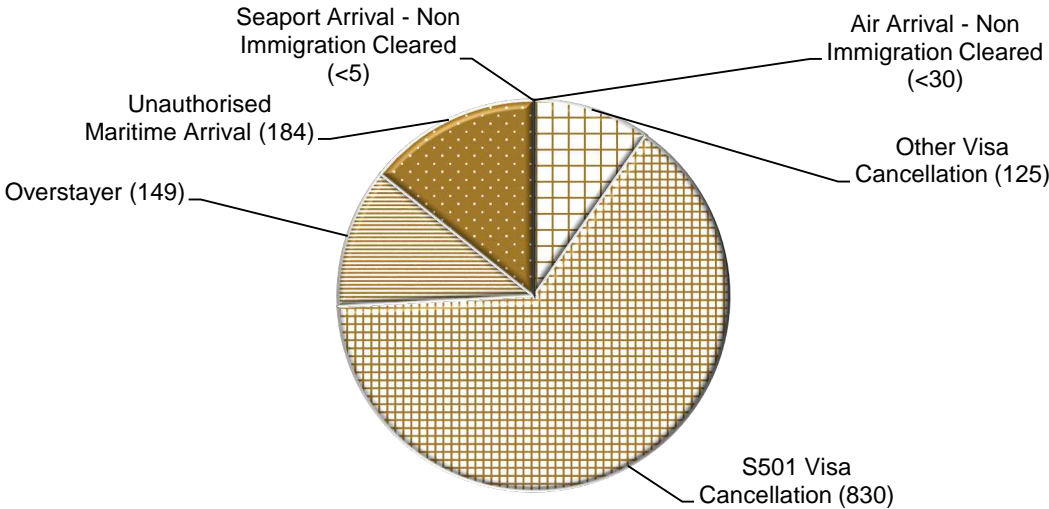


Figure 2 above, shows the number of people in held immigration detention facilities at 31 October 2022 by detention group, including Overstayers, S501 and Other Visa Cancellations, Unauthorised Maritime Arrivals, Unauthorised Air Arrivals, and if applicable – Illegal Foreign Fishers and Others such as stowaways and ship deserters.

Table 4 – People in Held Immigration Detention Facilities by Detention Group at 31 October 2022

Place of immigration detention by State*	S501 Visa Cancellation	UMA	Other Detention Group	Total	Change from 30/09/22
NSW					
Villawood IDC	306	52	122	480	+ 10
APODs	<5	0	9	<15	+ <10
VIC					
Melbourne ITA	113	37	56	206	- 1
APODs	<5	<5	<5	<5	- <5
QLD					
Brisbane ITA	78	<15	<10	98	+ 8
APODs	18	<5	<5	25	- 8
SA					
Adelaide ITA	20	<5	<5	26	+ 4
APODs	0	0	0	0	0
WA					
Yongah Hill IDC	153	60	59	272	- 12
Perth IDC	11	<5	<10	21	- 3
APODs	<5	<5	<5	8	- 7
North West Point IDC	123	<15	<30	163	- 10
Christmas Island APODs	0	0	0	0	0
NT					
APODs	0	0	0	0	- <5
Total IDCs	593	127	216	936	- 15
Total APODs	26	5	18	49	- 14
Total ITAs	211	52	67	330	+ 11
Total IDCs/APODs/ITAs	830	184	301	1,315	- 18

* Refer to Important Notice on APODs on page 3.

Table 5 – People in Held Immigration Detention Facilities by Detention Group and Cohort at 31 October 2022

Detention Group	Men	Women	Children	Total	Change from 30/09/22
S501 Visa Cancellation	796	34	0	830	- 1
Unauthorised Maritime Arrival	<185	<5	0	184	- 7
Other	<280	<25	<5	301	- 10
Total	1,256	<60	<5	1,315	- 18

People In Immigration Detention

Nationality

At 31 October 2022, there were 1315 people in held immigration detention facilities. Of these 1315 people, 16.2 per cent were from New Zealand, 7.8 per cent were from Iran, 6.1 per cent were from Vietnam, 4.9 per cent were from Sudan and 4.8 per cent were from India.

Table 6 – People in Held Immigration Detention Facilities by Nationality at 31 October 2022

Nationalities	Men	Women	Children	Total
New Zealand	194	19	0	213
Iran	<105	<5	0	102
Vietnam	70	10	0	80
Sudan	<65	<5	0	64
India	<65	<5	0	63
Tonga	57	0	0	57
Afghanistan	54	0	0	54
Iraq	<55	<5	0	52
United Kingdom	<50	<5	0	47
Stateless	39	0	0	39
Other	<525	<25	<5	544
Total	1,256	<60	<5	1,315

At 31 October 2022, 542 were people living in the community after being approved for a residence determination. Of these 542 people, 53.3 per cent were from Iran, 10.7 per cent were Stateless, 8.7 per cent were from Sri Lanka, 8.7 per cent were from Somalia and 3.9 per cent were from Iraq.

Table 7 – People in the Community under Residence Determination by Nationality at 31 October 2022

Nationalities	Men	Women	Children	Total
Iran	105	94	90	289
Stateless	27	13	18	58
Sri Lanka	19	10	18	47
Somalia	16	17	14	47
Iraq	18	<5	<5	21
Other	45	<15	<25	80
Total	230	150	162	542

Children In Immigration Detention

At 31 October 2022 there were less than five children (aged less than 18 years) in Immigration Residential Housing, Immigration Transit Accommodation and Alternative Places of Detention.

Figure 3 – Children in Immigration Residential Housing, Immigration Transit Accommodation and Alternative Places of Detention

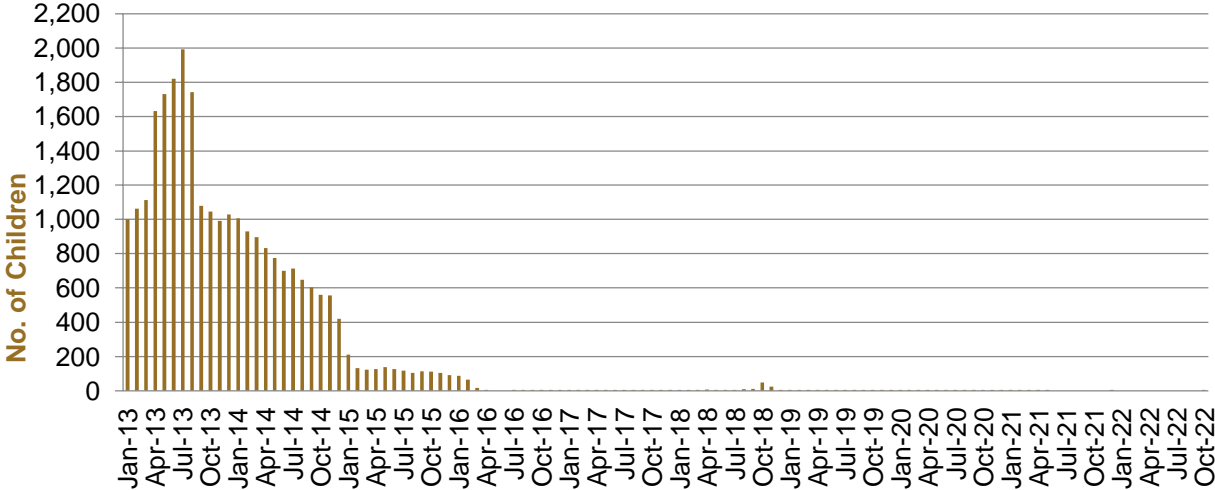


Figure 3 above, shows the number of children in IDFs and APODs from January 2013 to the date of this report. The continuous increase in the number of children in IDFs from April 2013 to Aug 2013 was due to a rapid increase in UMAs during this period. The number of children in IDFs continued to decline during the late 2013 and 2014, with further reduction in January 2015.

At 31 October 2022, the number of children living in the community after being approved for a residence determination has decreased by one to 162 compared with 163 at the end of September 2022.

Figure 4 – Children in the Community under Residence Determination

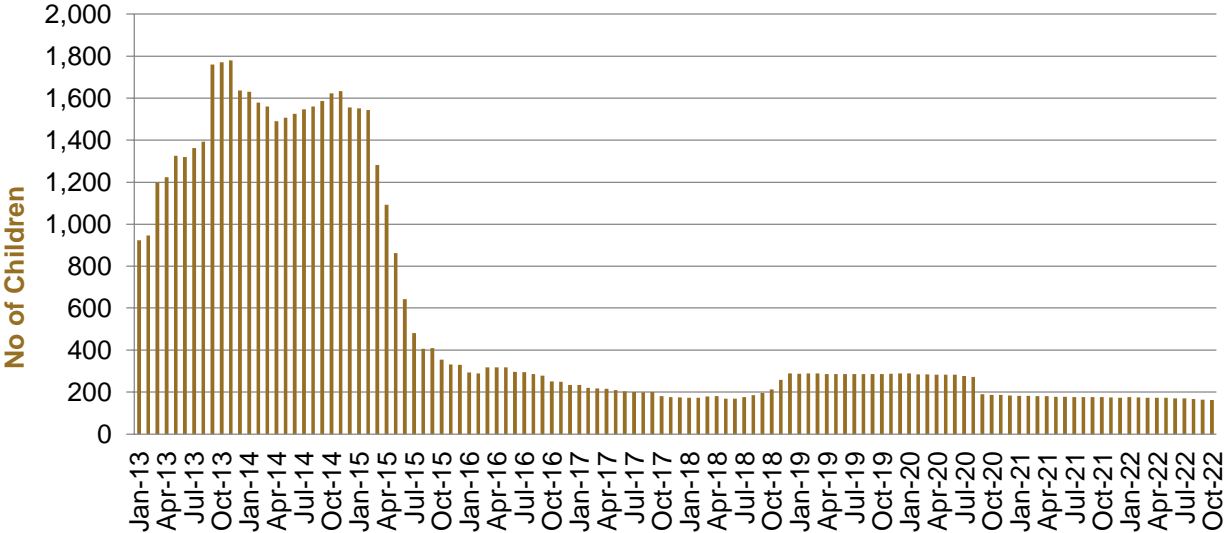


Figure 4 above, shows the number of children in the community under residence determination from January 2013 to the date of this report. The number of children in the community under residence determination, has levelled off at its lowest number since the peak in November 2013, as a result of releases into the community on Bridging E visas.

Table 8 – Children in Immigration Detention and UMA Children in the Community on a Bridging E Visa at 31 October 2022

Placement Type	Children
Immigration Residential Housing	0
Immigration Transit Accommodation	0
Alternative Places of Detention	<5
Total Facility	<5
Total in the Community under a Residence Determination	162
Total UMAs in the Community on a Bridging E visa (including in re-grant process)	1,365

Time In Immigration Detention Facilities

At 31 October 2022, there were 1315 people in immigration detention facilities.

Of these 1315 people, 17.3 per cent had been detained for 91 days or less and 43.7 per cent had been detained for 365 days or less.

Table 9 – Length of Time of People in Held Immigration Detention Facilities at 31 October 2022

Period Detained	Total	% of Total
7 days or less	37	2.8%
8 days - 31 days	54	4.1%
32 days - 91 days	137	10.4%
92 days - 182 days	156	11.9%
183 days - 365 days	190	14.4%
366 days - 547 days	131	10.0%
548 days - 730 days	123	9.4%
731 days - 1095 days	144	11.0%
1096 days - 1460 days	99	7.5%
1461 days - 1825 days	88	6.7%
Greater than 1825 days	156	11.9%
Total	1,315	100.0%

At 31 October 2022, the average period of time for people held in detention facilities was 774 days.

Figure 5 – Average Number of Days of People in Held Immigration Detention Facilities only

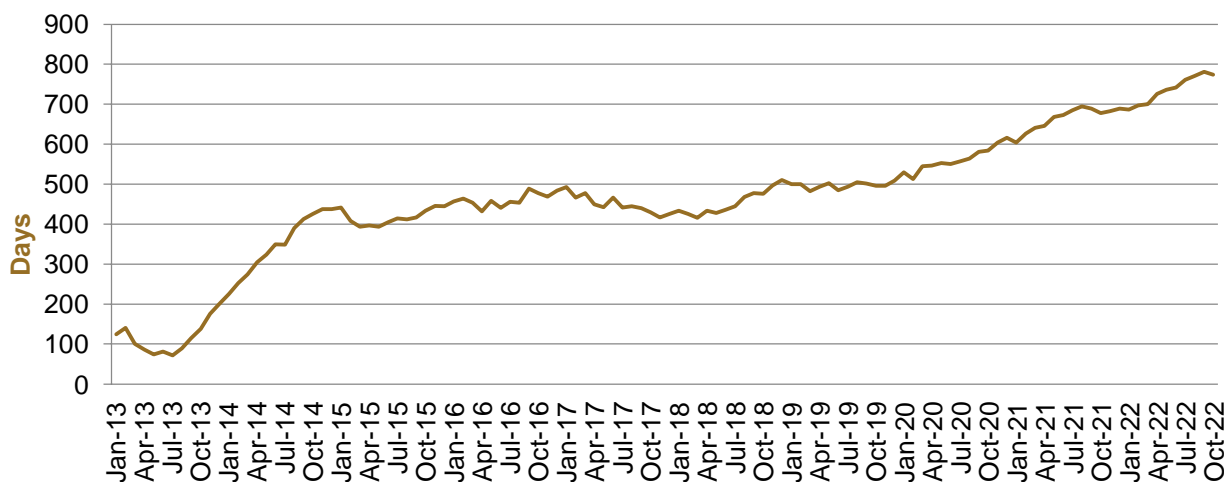


Figure 5 above, shows the average days in held immigration detention at the end of each month from January 2013 to the date of this report. The average period of time for people held in detention facilities steadily increased from July 2013 to January 2015. Between November 2018 and December 2019 the average number of days remained around 500. Since January 2020 the average period of time for people held in detention facilities has steadily increased.

The time an individual spends in immigration detention depends on a range of factors, including the complexity of their case, the legal processes they pursue and whether they voluntarily choose to leave Australia.

Time In Community Under Residence Determination

Of the 542 people in the community under residence determination, as at 31 October 2022, less than one per cent had been in the community for 91 days or less and less than three per cent had been in the community for 365 days or less.

Table 10 – Length of Time of People in Community under Residence Determination at 31 October 2022

Period Detained	Total	% of Total
7 days or less	<5	<1.0%
8 days - 31 days	<5	<1.0%
32 days - 91 days	6	1.1%
92 days - 182 days	<5	<1.0%
183 days - 365 days	22	4.1%
366 days - 547 days	38	7.0%
548 days - 730 days	26	4.8%
731 days - 1095 days	13	2.4%
1096 days - 1460 days	180	33.2%
1461 days - 1825 days	83	15.3%
Greater than 1825 days	170	31.4%
Total	542	100.0%