



Australian Government
Department of Home Affairs



Australian
BORDER FORCE

Immigration Detention and Community Statistics Summary

31 October 2019

Table of Contents

| | |
|---|----|
| About this report..... | 3 |
| Enquiries..... | 3 |
| Acronyms..... | 3 |
| Immigration Detention And Community Statistics Summary..... | 4 |
| In Community under Residence Determination Population By State/Territory..... | 5 |
| Immigration Detention Population..... | 6 |
| From 1990 to 30 June 2019..... | 6 |
| People In Immigration Detention Facilities..... | 7 |
| Arrival Type..... | 7 |
| People In Immigration Detention..... | 7 |
| Nationality..... | 8 |
| Children In Immigration Detention..... | 9 |
| Time In Immigration Detention Facilities..... | 11 |
| Time In Community Under Residence Determination..... | 12 |

About this report

This report provides an overview of the number of people in immigration detention and Regional Processing Centres as at midnight on the date of the report. The report is produced on a monthly basis.

Data is sourced from several departmental processing and recording systems. Data relating to the immigration detention population is dynamic and there can be delays in transmission of information from the Department's immigration detention network operations. Variations in figures between this report and previous issues can occur. Due to these issues, data from the current financial year should always be considered provisional.

Further information about immigration detention is available at:

<https://www.homeaffairs.gov.au/research-and-statistics/statistics/visa-statistics/live/immigration-detention>

Enquiries

Comments or enquiries concerning this report should be sent using the Department's client service feedback form quoting the name and date of the report.

See: <https://immi.homeaffairs.gov.au/help-support/contact-us>

Acronyms

Table 1 – Acronyms used in this document

| Acronym | Description |
|------------------------|--|
| APOD | Alternative Place of Detention |
| IMA | Illegal Maritime Arrival |
| IDC/F | Immigration Detention Centre/Facility |
| IRH | Immigration Residential Housing |
| ITA | Immigration Transit Accommodation |
| RPC | Regional Processing Centre |
| S501 | Section 501 of the <i>Migration Act 1958</i> (the Migration Act) |
| S501 Visa Cancellation | Visa cancellations based on character or related grounds |

Immigration Detention And Community Statistics Summary

At 31 October 2019, there were 1397 people in immigration detention facilities, including 1393 in immigration detention on the mainland and less than 5 in immigration detention on Christmas Island.

A further 834 people were living in the community after being approved for a residence determination and 13,554 were living in the community after grant of a Bridging Visa E.

The table below reflects figures based on records in Department of Home Affairs systems.

Table 2 – People in Immigration Detention Facilities (IDFs), Alternative Places of Detention (APODs), Regional Processing Centres (RPCs) and the Community at 31 October 2019

| Place of immigration detention | Men | Women | Children | Total | Change from Previous Summary 30/09/19 |
|---|--------------|--------------|--------------|---------------|---------------------------------------|
| Perth IDC | 18 | 11 | 0 | 29 | + 3 |
| Villawood IDC | 459 | 28 | 0 | 487 | + 15 |
| Yongah Hill IDC | 345 | 0 | 0 | 345 | + 5 |
| Christmas Island APODs | <5 | <5 | <5 | <5 | 0 |
| Mainland APODs | 5 | <5 | 0 | 6 | + 3 |
| Total IDCs/APODs | 828 | 41 | <5 | 871 | + 26 |
| Adelaide ITA | 28 | <5 | 0 | 29 | + 3 |
| Brisbane ITA | 207 | 6 | 0 | 213 | + 19 |
| Melbourne ITA | 262 | 21 | <5 | 284 | + 2 |
| Total in IRH and ITA | 497 | 28 | <5 | 526 | + 24 |
| Total in IDC/F | 1,325 | 69 | <5 | 1,397 | + 50 |
| Total in Community under Residence Determination | 289 | 259 | 286 | 834 | - 9 |
| Total in Community on Bridging Visa E (Including people in a re-grant process) | 9,797 | 1,619 | 2,138 | 13,554 | - 273 |
| Total RPCs | 0 | 0 | 0 | 0 | 0 |
| Detention Group | | | | | |
| S501 Visa Cancellation | 568 | 23 | 0 | 591 | + 5 |
| Illegal Maritime Arrival | 447 | 12 | <5 | 461 | + 28 |
| Other | 310 | 34 | <5 | 345 | + 17 |
| Total | 1,325 | 69 | <5 | 1,397 | + 50 |

In Community under Residence Determination Population By State/Territory

Of the 834 people approved for a residence determination to live in the community, 36 per cent were in Queensland, 30.6 per cent in Victoria, 19.3 per cent in New South Wales, 10.7 per cent in South Australia and 3.5 per cent in Western Australia.

Table 3 – People in the Community under Residence Determination by State/Territory at 31 October 2019

| State/Territory | Adult Male | Adult Female | Child Male (<18 years) | Child Female (<18 years) | Total |
|-------------------|------------|--------------|------------------------|--------------------------|------------|
| Queensland | 113 | 89 | 54 | 44 | 300 |
| Victoria | 86 | 73 | 56 | 40 | 255 |
| New South Wales | 52 | 63 | 28 | 18 | 161 |
| South Australia | 25 | 26 | 18 | 20 | 89 |
| Western Australia | 13 | 8 | <5 | <5 | 29 |
| Total | 289 | 259 | 160 | 126 | 834 |

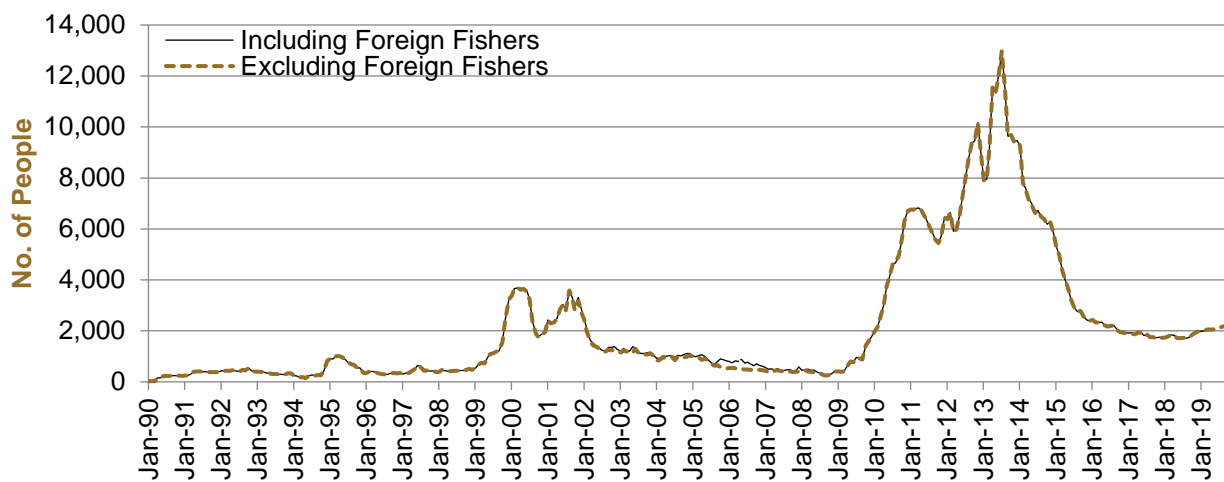
Immigration Detention Population

From January 1990 to 31 October 2019

The overall number of people in immigration detention including in the community under residence determination has increased by 380 to 2231 compared with 1851 at the end of October 2018. This number takes into account releases of detainees into the community under residence determination and detainees who were held in immigration detention facilities as at 31 October 2019.

Figure 1 – Population in Immigration Detention

Figure 1 above, shows the number of people in immigration detention from 1990 to the date of this report.



People In Immigration Detention Facilities

Arrival Type

There were 514 people who arrived unlawfully by air or boat, in held immigration detention facilities at 31 October 2019 representing 36.8 per cent of the total immigration detention population.

There were also 883 people (63.2 per cent of the total immigration population) who arrived in Australia lawfully and were subsequently taken into immigration detention for either overstaying or having their visas cancelled for breaching visa conditions.

Figure 2 – People in Held Immigration Detention Facilities by Detention Group

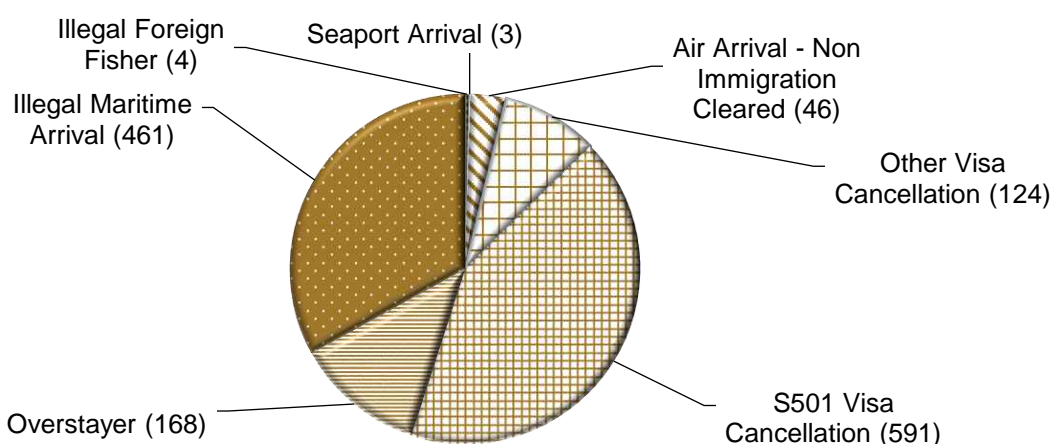


Figure 2 above, shows the number of people in held immigration detention facilities by detention group, including Overstayers, S501 and Other Visa Cancellations, Illegal Maritime Arrivals, Unauthorised Air Arrivals, and if applicable – Inadequately Documented Crew Members and Others such as stowaways and ship deserters.

Table 4 – People in Held Immigration Detention Facilities by Detention Group at 31 October 2019

| Place of immigration detention | S501 Visa Cancellation | IMA | Other Detention Group | Total | Change from Previous Summary 30/09/19 |
|--------------------------------|------------------------|------------|-----------------------|--------------|---------------------------------------|
| Perth IDC | 15 | 5 | 9 | 29 | + 3 |
| Villawood IDC | 259 | 77 | 151 | 487 | + 15 |
| Yongah Hill IDC | 192 | 92 | 61 | 345 | + 5 |
| Christmas Island APODs | 0 | <5 | 0 | <5 | 0 |
| Mainland APODs | 0 | <5 | 5 | 6 | + 3 |
| Total IDCs/APODs | 466 | 179 | 226 | 871 | + 26 |
| Adelaide ITA | <5 | 19 | 6 | 29 | + 3 |
| Brisbane ITA | 43 | 144 | 26 | 213 | + 19 |
| Melbourne ITA | 78 | 119 | 87 | 284 | + 2 |
| Total in IRH and ITA | 125 | 282 | 119 | 526 | + 24 |
| Total in IDC/F | 591 | 461 | 345 | 1,397 | + 50 |

People In Immigration Detention

Nationality

At 31 October 2019, there were 1397 people in held immigration detention facilities. Of these 1397 people, 13.6 per cent were from Iran, 11.3 per cent were from New Zealand, 6.4 per cent were from Sri Lanka, 5.8 per cent were from Vietnam and 5.6 per cent were from Sudan.

Table 5 – People in Held Immigration Detention Facilities by Nationality at 31 October 2019

| Nationalities | Adult Male | Adult Female | Child Male (<18 years) | Child Female (<18 years) | Total |
|----------------|--------------|--------------|------------------------|--------------------------|--------------|
| Iran | 181 | 9 | 0 | 0 | 190 |
| New Zealand | 146 | 12 | 0 | 0 | 158 |
| Sri Lanka | 80 | 8 | 0 | <5 | 90 |
| Vietnam | 73 | 8 | 0 | 0 | 81 |
| Sudan | 76 | <5 | 0 | 0 | 78 |
| Iraq | 71 | 0 | 0 | 0 | 71 |
| Afghanistan | 59 | 0 | 0 | 0 | 59 |
| United Kingdom | 52 | <5 | 0 | 0 | 55 |
| India | 47 | <5 | 0 | 0 | 49 |
| China | 39 | 7 | 0 | 0 | 46 |
| Other | 501 | 18 | <5 | 0 | 520 |
| Total | 1,325 | 69 | <5 | <5 | 1,397 |

At 31 October 2019, 834 were people living in the community after being approved for a residence determination. Of these 834 people, 52.5 per cent were from Iran, 12.5 per cent were Stateless, 10.9 per cent were from Sri Lanka, 7.7 per cent were from Somalia and 3.1 per cent were from Iraq.

Table 6 – People in the Community under Residence Determination by Nationality at 31 October 2019

| Nationalities | Adult Male | Adult Female | Child Male (<18 years) | Child Female (<18 years) | Total |
|---------------|------------|--------------|------------------------|--------------------------|------------|
| Iran | 145 | 150 | 80 | 63 | 438 |
| Stateless | 38 | 29 | 15 | 22 | 104 |
| Sri Lanka | 30 | 21 | 22 | 18 | 91 |
| Somalia | 19 | 27 | 13 | 5 | 64 |
| Iraq | 17 | <5 | <5 | <5 | 26 |
| Other | 40 | 28 | 27 | 16 | 111 |
| Total | 289 | 259 | 160 | 126 | 834 |

Children In Immigration Detention

At 31 October 2019 there were less than five children (aged less than 18 years) in Immigration Residential Housing, Immigration Transit Accommodation and Alternative Places of Detention.

Figure 3 – Children in Immigration Residential Housing, Immigration Transit Accommodation and Alternative Places of Detention

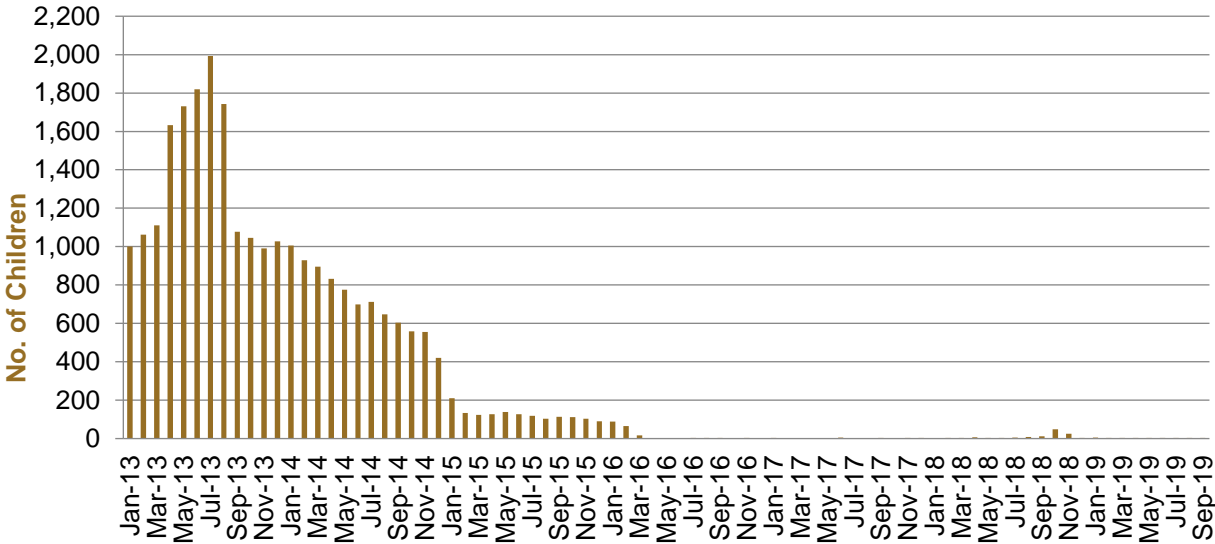


Figure 3 above, shows the number of children in immigration detention facilities and alternative places of detention from January 2013 to the date of this report. The continuous increase in the number of children in detention facilities from April 2013 to Aug 2013 was due to a rapid increase in illegal maritime arrivals during this period. The number of children in immigration detention facilities reduced in September 2013, as children completed mandatory processing and were transferred into the community. The number of children in detention facilities continued to decline during the late 2013 and 2014, with further reduction in January 2015. The increase in the number of children in alternative places of detention from August 2018 was following transfers from Nauru to Australia (with family members).

At 31 October 2019, the number of children living in the community after being approved for a residence determination increased by one to 286 from 285 in the previous report.

Figure 4 – Children in the Community under Residence Determination

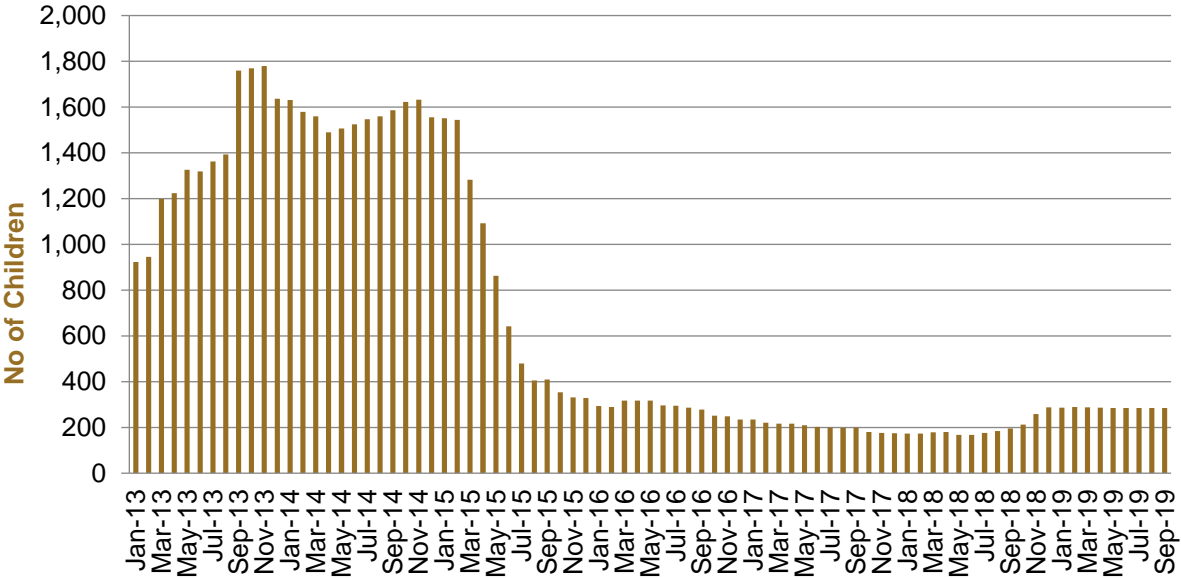


Figure 4 above, shows the number of children in the community under residence determination from January 2012 to the date of this report. The number of children in the community under residence determination, has levelled off at its lowest number since the peak in November 2013, as a result of releases into the community on Bridging E visas.

Table 7 – Children in Immigration Detention and IMA Children in the Community on a Bridging E Visa at 31 October 2019

| Placement Type | Children |
|--|--------------|
| Immigration Residential Housing | 0 |
| Immigration Transit Accommodation | <5 |
| Alternative Places of Detention | <5 |
| Total Facility | <5 |
| Total in the Community under a Residence Determination | 286 |
| Total in the Community on a Bridging E visa (including in re-grant process) | 2,138 |

Time In Immigration Detention Facilities

At 31 October 2019, there were 1397 people in immigration detention facilities.

Of these 1397 people, 28.1 per cent had been detained for 91 days or less and 59.6 per cent had been detained for 365 days or less.

Table 8 – Length of Time of People in Held Immigration Detention Facilities at 31 October 2019

| Period Detained | Total | % of Total |
|-----------------------|--------------|-------------|
| 7 days or less | 71 | 5.1% |
| 8 days - 31 days | 115 | 8.2% |
| 32 days - 91 days | 206 | 14.7% |
| 92 days - 182 days | 234 | 16.8% |
| 183 days - 365 days | 207 | 14.8% |
| 366 days - 547 days | 142 | 10.2% |
| 548 days - 730 days | 108 | 7.7% |
| Greater than 730 days | 314 | 22.5% |
| Total | 1,397 | 100% |

At 31 October 2019, the average period of time for people held in detention facilities was 496 days.

Figure 5 – Average Number of Days of People in Held Immigration Detention Facilities only

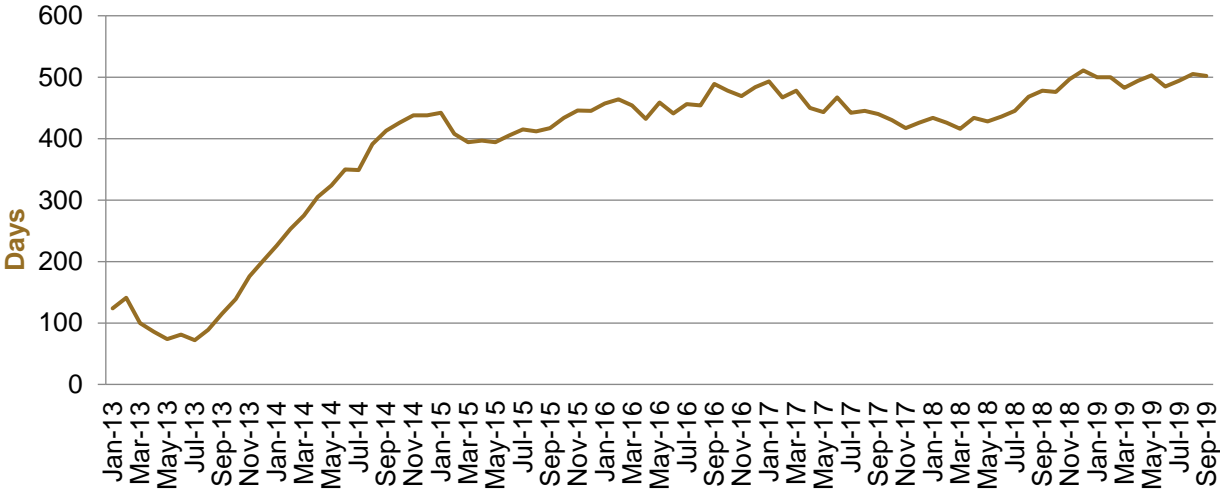


Figure 5 above, shows the average days in held immigration detention at the end of each month from January 2013 to the date of this report. The average period of time for people held in detention facilities steadily increased from July 2013 to January 2015.

Time In Community Under Residence Determination

Of the 843 people in the community under residence determination, as at 31 October 2019, 7.6 per cent had been in the community for 91 days or less and 49.6 per cent had been in the community for 365 days or less.

Table 9 – Length of Time of People in Community under Residence Determination at 31 October 2019

| Period Detained | Total | % of Total |
|-----------------------|------------|-------------|
| 7 days or less | <5 | 0.1% |
| 8 days - 31 days | 6 | 0.7% |
| 32 days - 91 days | 50 | 6.0% |
| 92 days - 182 days | 36 | 4.3% |
| 183 days - 365 days | 275 | 33.0% |
| 366 days - 547 days | 136 | 16.3% |
| 548 days - 730 days | 32 | 3.8% |
| Greater than 730 days | 298 | 35.7% |
| Total | 834 | 100% |