



Australian Government  
Department of Immigration  
and Border Protection



Australian  
**BORDER FORCE**

# Immigration Detention and Community Statistics Summary

31 October 2016

## Table of Contents

Immigration Detention and Community Statistics Summary.....	1
About this report.....	3
Enquiries .....	3
Acronyms .....	3
Immigration Detention And Community Statistics Summary .....	4
Community Population By State/Territory .....	5
Immigration Detention Population .....	6
From 1990 to 31 October 2016 .....	6
People In Immigration Detention Facilities.....	7
Arrival Type.....	7
People In Immigration Detention.....	8
Nationality .....	8
Children In Immigration Detention.....	9
Time In Immigration Detention Facilities .....	11
Time In Community Detention.....	12

## About this report

This report provides an overview of the number of people in immigration detention and Regional Processing Centres as at midnight on the date of the report. The report is produced on a monthly basis.

Data is sourced from several departmental processing and recording systems. Data relating to the immigration detention population is dynamic and there can be delays in transmission of information from the department's immigration detention network operations. Variations in figures between this report and previous issues can occur. Due to these issues, data from the current financial year should always be considered provisional.

Further information about immigration detention is available at:

<http://www.border.gov.au/Busi/Comp/Immigration-detention>

## Enquiries

Comments or enquiries concerning this report should be sent using the department's client service feedback form quoting the name and date of the report.

See: <http://www.border.gov.au/about/contact/make-enquiry/enquiries-and-feedback>

## Acronyms

**Table 1 – Acronyms used in this document**

Acronym	Description
APOD	Alternative Place of Detention
IMA	Illegal Maritime Arrival
IDC/F	Immigration Detention Centre/Facility
IRH	Immigration Residential Housing
ITA	Immigration Transit Accommodation
RPC	Regional Processing Centre
S501	Section 501 of the Migration ACT
S501 Visa Cancellation	Visa cancellations based on character or related grounds

# Immigration Detention And Community Statistics Summary

At 31 October 2016, there were 1403 people in immigration detention facilities, including 1150 in immigration detention on the mainland and 253 in immigration detention on Christmas Island.

A further 557 people were living in the community after being approved for a residence determination and 26,642 were living in the community after grant of a Bridging Visa E.

The table below reflects figures based on records in Department of Immigration and Border Protection systems.

**Table 2 – People in Immigration Detention Facilities (IDFs), Alternative Places of Detention (APODs), Regional Processing Centres (RPCs) and the Community at 31 October 2016**

Place of immigration detention	Men	Women	Children	Total	Change from Previous Summary 30/09/16
Christmas Island IDC	253	0	0	<b>253</b>	+ 2
Maribyrnong IDC	93	5	0	<b>98</b>	+ 3
Perth IDC	23	6	0	<b>29</b>	+ 8
Villawood IDC	365	41	0	<b>406</b>	+13
Yongah Hill IDC	376	0	0	<b>376</b>	- 59
Mainland APODs	<5	0	0	<b>&lt;5</b>	- 17
<b>Total IDCs/APODs</b>	<b>1,112</b>	<b>52</b>	<b>0</b>	<b>1,164</b>	<b>- 50</b>
Perth IRH	<5	<5	0	<b>6</b>	- 1
Adelaide ITA	17	<5	0	<b>19</b>	+ 1
Brisbane ITA	68	15	<5	<b>84</b>	+ 5
Melbourne ITA	98	32	0	<b>130</b>	- 6
<b>Total in IRH and ITA</b>	<b>185</b>	<b>53</b>	<b>&lt;5</b>	<b>239</b>	<b>- 1</b>
<b>Total Facility</b>	<b>1,297</b>	<b>105</b>	<b>&lt;5</b>	<b>1,403</b>	<b>- 51</b>

<b>Total Community under Residence Determination</b>	<b>165</b>	<b>141</b>	<b>251</b>	<b>557</b>	<b>- 51</b>
--	------------	------------	------------	------------	-------------

<b>Total Community on Bridging Visa E (Including people in a re-grant process)</b>	<b>19,322</b>	<b>3,299</b>	<b>4,021</b>	<b>26,642</b>	<b>- 200</b>
--	---------------	--------------	--------------	---------------	--------------

Republic of Nauru (RPC)	295	50	45	<b>390</b>	- 6
Manus Province, Papua New Guinea (RPC)	872	0	0	<b>872</b>	- 1
<b>Total RPCs</b>	<b>1,167</b>	<b>50</b>	<b>45</b>	<b>1,262</b>	<b>- 4</b>

Detention Group	Men	Women	Children	Total	Change from Previous Summary 30/09/16
S501 Visa Cancellation	451	20	0	<b>471</b>	-5
Illegal Maritime Arrival	391	32	<5	<b>424</b>	-48
Other	455	53	0	<b>508</b>	+2
<b>Total</b>	<b>1,297</b>	<b>105</b>	<b>&lt;5</b>	<b>1,403</b>	<b>- 51</b>

# Community Population By State/Territory

Of the 557 people approved for a residence determination to live in the community, 34.8 per cent were in Victoria, 28.5 per cent in New South Wales, 20.8 per cent in Queensland, 8.3 per cent in Western Australia, 7.4 per cent in South Australia and 0.2 per cent in the Australian Capital Territory.

**Table 3 – Community Placement Population by State/Territory at 31 October 2016**

State/Territory	Adult Male	Adult Female	Child Male (<18 years)	Child Female (<18 years)	Total
Victoria	65	47	49	33	<b>194</b>
New South Wales	39	42	45	33	<b>159</b>
Queensland	32	29	35	20	<b>116</b>
Western Australia	21	12	9	<5	<b>46</b>
South Australia	8	11	10	12	<b>41</b>
Australian Capital Territory	0	0	<5	0	<b>&lt;5</b>
<b>Total</b>	<b>165</b>	<b>141</b>	<b>149</b>	<b>102</b>	<b>557</b>

# Immigration Detention Population

## From 1990 to 31 October 2016

The number of people in immigration detention including foreign fishers has decreased by 102 to 1960 from 2062 in the previous report.

**Figure 1 – Population in Immigration Detention**

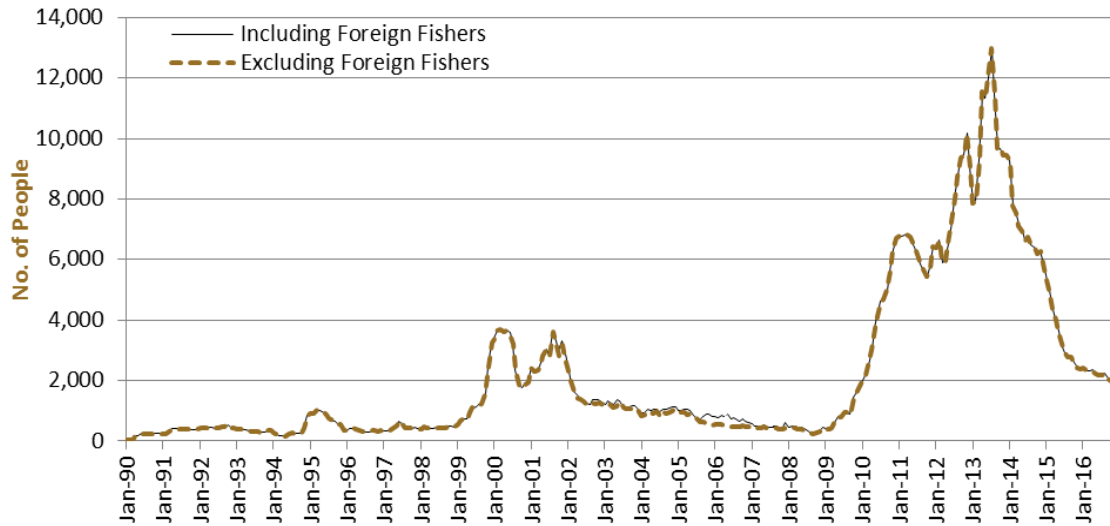


Figure 1 above, shows the number of people in immigration detention from 1990 to the date of this report. The trend had a consistent rise of people in immigration detention from January 2009 to January 2013, but has since had consistent decline.

# People In Immigration Detention Facilities

## Arrival Type

There were 493 people, who arrived unlawfully by air or boat, in held immigration detention facilities at 31 October 2016, representing 35.1 per cent of the total immigration detention population.

There were also 910 people (64.9 per cent of the total immigration population) who arrived in Australia lawfully and were subsequently taken into immigration detention and had visa cancellations for either over staying or breaching their visa conditions.

**Figure 2 – People in Held Immigration Detention Facilities by Detention Group**

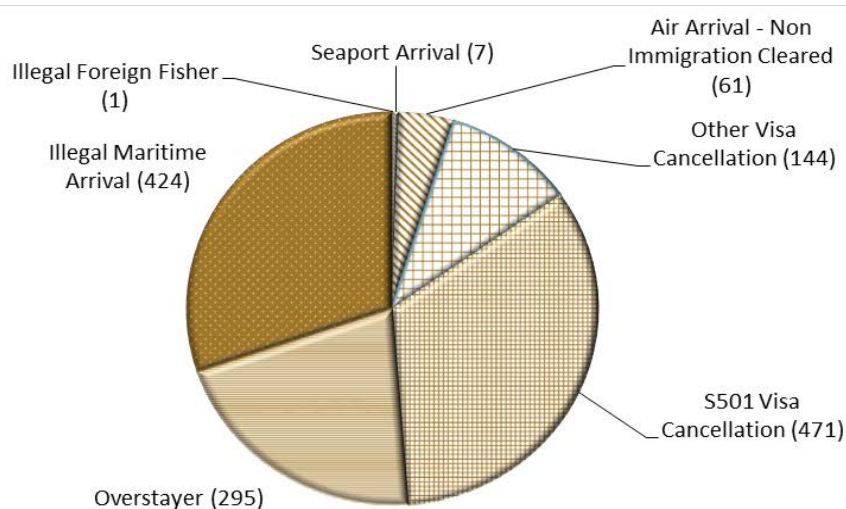


Figure 2 above, shows the number of people in held immigration detention facilities by detention group, including Overstayers, S501 and Other Visa Cancellations, Foreign Fishers, Irregular Maritime Arrivals, Unauthorised Air Arrivals, and if required – Inadequately Documented Crew Members and Others such as stowaways and ship deserters.

**Table 4 – People in Held Immigration Detention Facilities by Detention Group**

Place of immigration detention	S501 Visa Cancellation	IMA	Other Detention Group	Total	Change from Previous Summary 30/09/16
Christmas Island IDC	140	51	62	<b>253</b>	+ 2
Maribyrnong IDC	34	21	43	<b>98</b>	+ 3
Perth IDC	12	<5	13	<b>29</b>	+ 8
Villawood IDC	163	86	157	<b>406</b>	+ 11
Yongah Hill IDC	88	159	129	<b>376</b>	- 59
Mainland APODs	0	0	<5	<b>&lt;5</b>	- 15
<b>Total IDCs/APODs</b>	<b>437</b>	<b>321</b>	<b>406</b>	<b>1,164</b>	<b>- 50</b>
Perth IRH	<5	<5	<5	<b>6</b>	- 1
Adelaide ITA	<5	<5	14	<b>19</b>	+ 1
Brisbane ITA	29	34	21	<b>84</b>	+ 5
Melbourne ITA	<5	62	65	<b>130</b>	- 6
<b>Total in IRH and ITA</b>	<b>34</b>	<b>103</b>	<b>102</b>	<b>239</b>	<b>- 1</b>
<b>Total Facility</b>	<b>471</b>	<b>424</b>	<b>508</b>	<b>1,403</b>	<b>- 51</b>

# People In Immigration Detention

## Nationality

At 31 October 2016, there were 1403 people in held immigration detention facilities. Of these 1403 people, 13.1 per cent were from New Zealand, 9.8 per cent were from Iran, 9.1 per cent were from Vietnam, 5.4 per cent were from Sri Lanka and 5.3 per cent were from China.

**Table 5 – People in Held Immigration Detention Facilities at 31 October 2016**

Nationalities	Adult Male	Adult Female	Child Male (<18 years)	Child Female (<18 years)	Total
New Zealand	178	6	0	0	<b>184</b>
Iran	117	19	<5	0	<b>137</b>
Vietnam	110	18	0	0	<b>128</b>
Sri Lanka	76	0	0	0	<b>76</b>
China	64	11	0	0	<b>75</b>
India	62	<5	0	0	<b>63</b>
Iraq	50	<5	0	0	<b>52</b>
United Kingdom	43	7	0	0	<b>50</b>
Afghanistan	47	0	0	0	<b>47</b>
Other	550	41	0	0	<b>591</b>
<b>Total</b>	<b>1,297</b>	<b>105</b>	<b>&lt;5</b>	<b>0</b>	<b>1,403</b>

At 31 October 2016, 557 were people living in the community after being approved for a residence determination. Of these 557 people, 44 per cent were from Iran, 15.6 per cent were from Sri Lanka, 9.5 per cent were Stateless and 6.6 per cent were from Iraq.

**Table 6 – People in the community under Residence Determination at 31 October 2016**

Nationalities	Adult Male	Adult Female	Child Male (<18 years)	Child Female (<18 years)	Total
Iran	82	71	51	41	<b>245</b>
Sri Lanka	23	19	29	16	<b>87</b>
Stateless	14	12	13	14	<b>53</b>
Iraq	11	7	10	9	<b>37</b>
Vietnam	12	8	9	7	<b>36</b>
Other	23	24	37	15	<b>99</b>
<b>Total</b>	<b>165</b>	<b>141</b>	<b>149</b>	<b>102</b>	<b>557</b>



# Children In Immigration Detention

At 31 October 2016, there were less than five children (aged less than 18 years) in Immigration Residential Housing, Immigration Transit Accommodation and Alternative Places of Detention.

**Figure 3 – Children in Immigration Residential Housing, Immigration Transit Accommodation and Alternative Places of Detention**

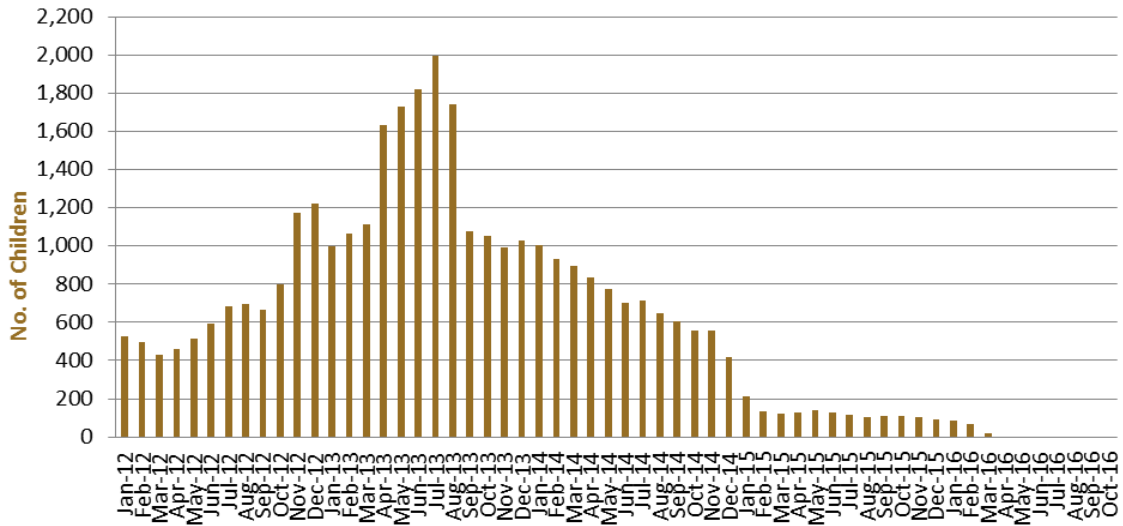


Figure 3 above, shows the number of children in immigration detention facilities and alternative places of detention from January 2012 to the date of this report. The continuous increase in the number of children in detention facilities from April 2013 to August 2013 was due to a rapid increase in irregular maritime arrivals during this period. The number of children in immigration detention facilities reduced in September 2013, as children completed mandatory processing and were transferred into the community. The number of children in detention facilities continued to decline during the late 2013 and 2014, with further reduction in January 2015.

At 31 October 2016, the number of children living in the community after being approved for a residence determination decreased to 251 from 278 in the previous report.

**Figure 4 – Children in the community under Residence Determination**

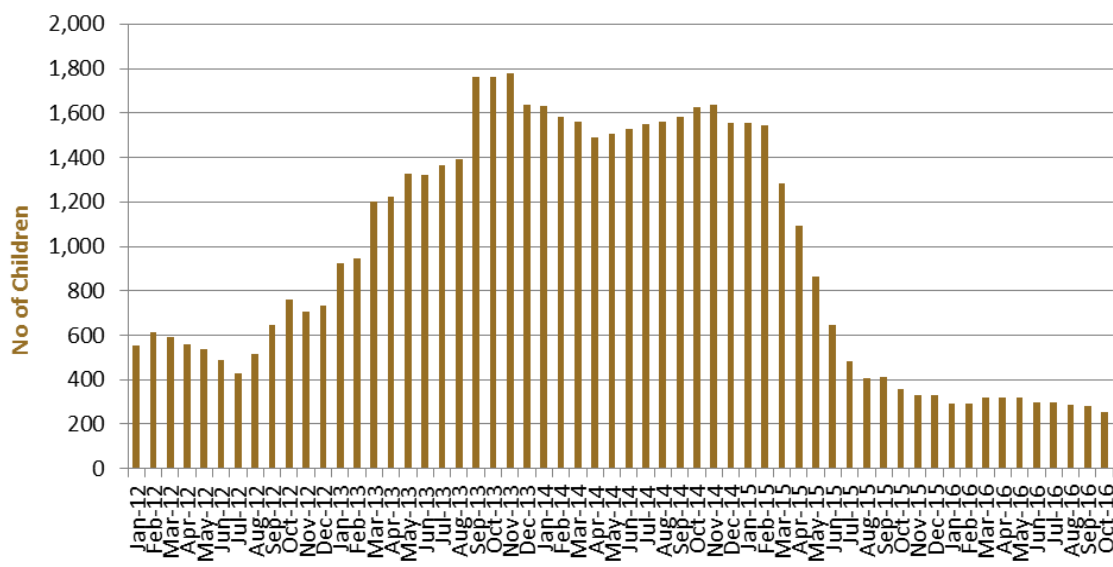


Figure 4 above, shows the number of children in the community under residence determination from January 2012 to the date of this report. The number of children in the community under residence determination, has levelled off at its lowest number since the peak in November 2013, as a result of releases into the community on Bridging E visas.

**Table 7 – Children in Immigration Detention and in the Community at 31 October 2016 <sup>1</sup>**

Placement Type	Children
Immigration Residential Housing	0
Immigration Transit Accommodation	<5
Alternative Places of Detention	0
<b>Total Facility</b>	<b>&lt;5</b>
<b>Total in the Community under a Residence Determination</b>	<b>251</b>
<b>Total in the Community on a Bridging E visa (including in re-grant process)</b>	<b>4,021</b>

(1) <sup>1</sup> At 31 October 2016, there were less than five children in held immigration detention facilities. The table above reflects figures based on records in Department of Immigration and Border Protection systems.

# Time In Immigration Detention Facilities

At 31 October 2016, there were 1403 people in immigration detention facilities. Of these 1403 people, 26.4 per cent had been detained for 91 days or less and 55.5 per cent had been detained for 365 days or less.

**Table 8 – Length of time in held immigration detention facilities at 31 October 2016**

Period Detained	Total	% of Total
7 days or less	73	5.2%
8 days - 31 days	100	7.1%
32 days - 91 days	198	14.1%
92 days - 182 days	190	13.5%
183 days - 365 days	217	15.5%
366 days - 547 days	172	12.3%
548 days - 730 days	110	7.8%
Greater than 730 days	343	24.4%
<b>Total</b>	<b>1,403</b>	<b>100%</b>

At 31 October 2016, the average period of time for people held in detention facilities was 478 days.

**Figure 5 – Average number of days in held immigration detention facilities only**

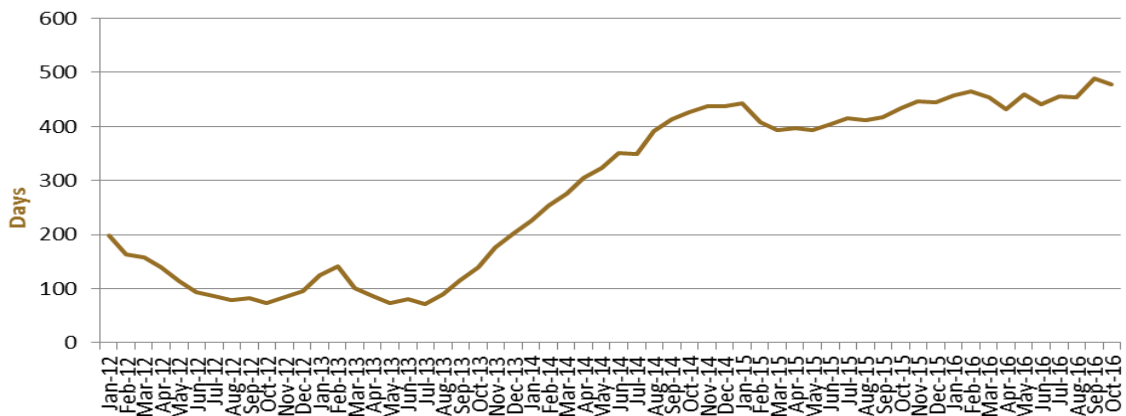


Figure 5 above, shows the average days in held immigration detention only by month from January 2012 to the date of this report. The average period of time for people held in detention facilities steadily increased from July 2013 to January 2015. Between January 2015 and March 2015, the average period of time for people in held detention facilities decreased.

# Time In Community Placement

Of the 557 people in Community Placement, as at 31 October 2016, 3.2 per cent had been in Community Placement for 91 days or less and 51.3 per cent had been in Community Placement for 365 days or less.

**Table 9 – People in Community Placement by Length of Time in Community Placement at 31 October 2016**

Period Detained	Total	% of Total
7 days or less	0	0.0%
8 days - 31 days	7	1.3%
32 days - 91 days	11	2.0%
92 days - 182 days	31	5.6%
183 days - 365 days	237	42.5%
366 days - 547 days	48	8.6%
548 days - 730 days	34	6.1%
Greater than 730 days	189	33.9%
<b>Total</b>	<b>557</b>	<b>100%</b>