



Australian Government
Department of Home Affairs



Australian
BORDER FORCE

Immigration Detention and Community Statistics Summary

May 2022 (released 2 September 2022)

Table of Contents

About this report	3
Enquiries	3
Acronyms	3
Important Notice on APODs	3
Important Notice on UMAs	3
Immigration Detention And Community Statistics Summary	4
In Community under Residence Determination Population By State/Territory	5
Immigration Detention Population.....	6
From January 1990 to Current.....	6
People In Immigration Detention Facilities.....	7
Arrival Type.....	7
People In Immigration Detention	9
Nationality	9
Children In Immigration Detention	10
Time In Immigration Detention Facilities	12
Time In Community Under Residence Determination	13

About this report

This report provides an overview of the number of people in onshore immigration detention as at midnight on the date of the report. The report is produced on a monthly basis.

As data is sourced from several departmental processing and recording systems, data relating to the immigration detention population is dynamic and variations between monthly reports can occur. Due to these issues, data from the current financial year should always be considered provisional.

Further information about immigration detention is available at:

<https://www.homeaffairs.gov.au/research-and-statistics/statistics/visa-statistics/live/immigration-detention>

Enquiries

Comments or enquiries concerning this report should be sent using the Department's client service feedback form quoting the name and date of the report.

See: <https://immi.homeaffairs.gov.au/help-support/contact-us>

Acronyms

Table 1 – Acronyms used in this document

Acronym	Description
APOD	Alternative Place of Detention
UMA	Unauthorised Maritime Arrival
IDC/F	Immigration Detention Centre/Facility
IRH	Immigration Residential Housing
ITA	Immigration Transit Accommodation
S501	Section 501 of the <i>Migration Act 1958</i> (the Migration Act)
S501 Visa Cancellation	Visa cancellations based on character or related grounds

Important Notice on APODs

From July 2020, detainees residing in APODs are reported under 'APODs' rather than under the ITA or IDC that had responsibility for their management and care. APODs include hospitals, aged-care facilities, mental health inpatient facilities, as well as hotel and apartment style accommodation. The number of individuals in APODs is provided by the State and Territory of the APODs.

Important Notice on UMAs

The term Unauthorised Maritime Arrival (UMA) has a specific meaning, which is defined in the *Migration Act 1958*. The term Illegal Maritime Arrival (IMA) was used in place of UMA in previous editions of this publication. From the April 2022 edition onwards the term UMA will be used.

Immigration Detention And Community Statistics Summary

At 31 May 2022, there were 1402 people in immigration detention facilities.

Of the 1402 people in immigration detention facilities, 1270 (90.6) per cent have a criminal history.

A further 569 people were living in the community after being approved for residence determination and 10,927 UMAs were living in the community after grant of a Bridging Visa E.

The table below reflects figures based on records in Department of Home Affairs systems.

Table 2 – People in Immigration Detention Centres (IDCs), Alternative Places of Detention (APODs), Immigration Transit Accommodation (ITA) and the Community at 31 May 2022

Place of immigration detention by State*	Men	Women	Children	Total	Change from 30/04/22
NSW					
Villawood IDC	450	33	0	483	- <5
APODs	<25	<5	0	24	- 5
VIC					
Melbourne ITA	<200	<5	0	<205	- 20
APODs	<15	<5	0	13	- <5
QLD					
Brisbane ITA	94	0	0	94	+ <5
APODs	25	7	0	32	- <5
SA					
Adelaide ITA	<25	0	0	<25	+ <5
APODs	<5	0	0	<5	+ <5
WA					
Yongah Hill IDC	274	0	0	274	- 10
Perth IDC	15	10	0	25	+ <5
APODs	<20	<5	0	19	+ <5
North West Point IDC	209	0	0	209	+ 20
Christmas Island APODs	0	0	0	0	0
NT					
APODs	<5	0	0	<5	+ <5
Total IDCs	948	43	0	991	+ 9
Total APODs	<85	<15	0	94	- 6
Total ITAs	<315	<5	0	317	- 15
Total IDCs/APODs/ITAs	1,342	60	0	1,402	- 12
Total in Community under Residence Determination	235	162	172	569	+ 1
Total UMAs in Community on Bridging Visa E (Including people in a re-grant process)	8,227	1,249	1,451	10,927	- 46

* Refer to Important Notice on APODs on page 3.

In Community under Residence Determination Population By State/Territory

Of the 569 people approved for a residence determination to live in the community, 48 per cent were in Victoria, 31.3 per cent in Queensland, 15.6 per cent in New South Wales, 3.2 per cent in South Australia and 1.9 per cent in Western Australia.

Table 3 – People in the Community under Residence Determination by State/Territory at 31 May 2022

State/Territory	Men	Women	Children	Total
New South Wales	34	31	24	89
Victoria	112	79	82	273
Queensland	72	45	61	178
South Australia	12	<5	<5	18
Western Australia	5	<5	<5	11
Total	235	162	172	569

Immigration Detention Population

From January 1990 to Current

The overall number of people in immigration detention including in the community under residence determination has decreased by 41 to 1971 compared with 2012 at the end of May 2021. This number takes into account detainees in the community under residence determination and detainees who were held in immigration detention facilities as at 31 May 2022.

Figure 1 – Population in Immigration Detention

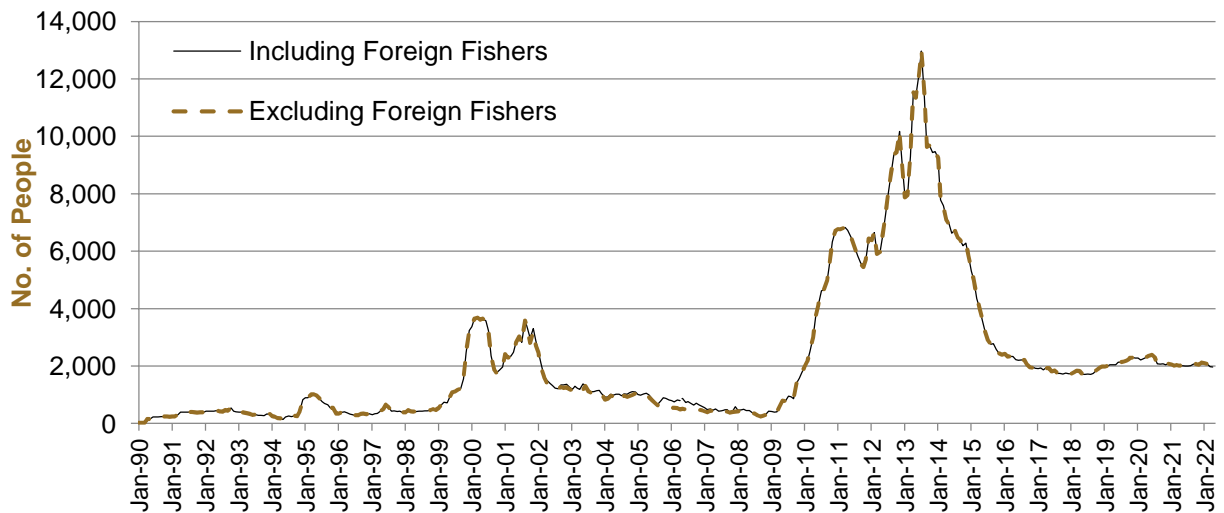


Figure 1 above, shows the number of people in immigration detention from 1990 to 2022.

People In Immigration Detention Facilities

Arrival Type

There were 226 people who arrived unlawfully by air or boat, in held immigration detention facilities at 31 May 2022 representing 16.1 per cent of the total immigration detention population.

There were also 1176 people (83.9 per cent of the total immigration population) who arrived in Australia lawfully and were subsequently taken into immigration detention for either overstaying or having their visas cancelled for breaching visa conditions.

Figure 2 – People in Held Immigration Detention Facilities by Detention Group

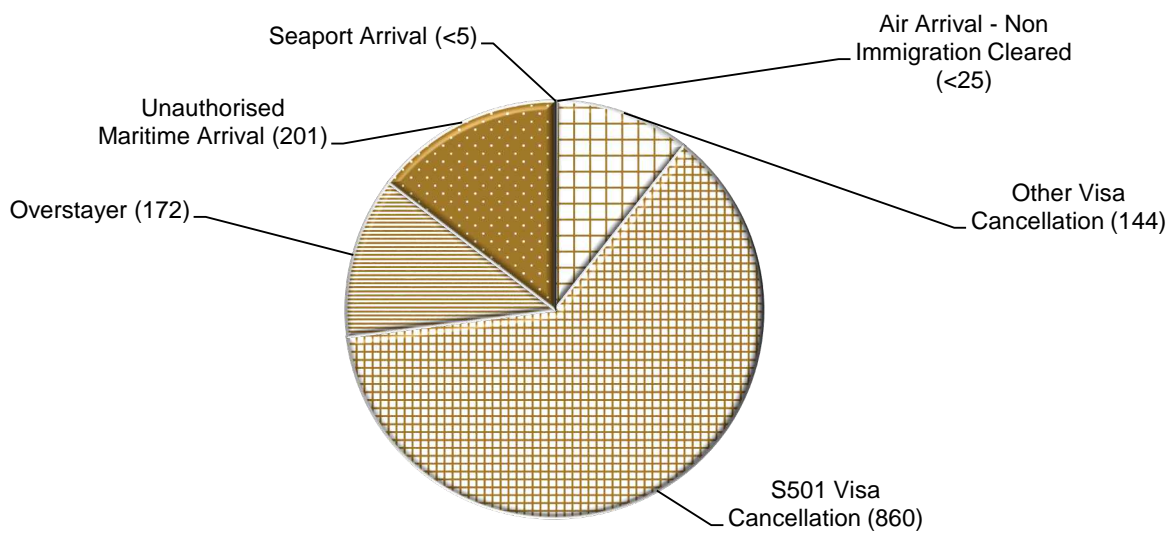


Figure 2 above, shows the number of people in held immigration detention facilities at 31 May 2022 by detention group, including Overstayers, S501 and Other Visa Cancellations, Unauthorised Maritime Arrivals, Unauthorised Air Arrivals, and if applicable – Illegal Foreign Fishers and Others such as stowaways and ship deserters.

Table 4 – People in Held Immigration Detention Facilities by Detention Group at 31 May 2022

Place of immigration detention by State*	S501 Visa Cancellation	UMA	Other Detention Group	Total	Change from 30/04/22
NSW					
Villawood IDC	292	55	136	483	- <5
APODs	16	0	8	24	- 5
VIC					
Melbourne ITA	101	<40	<65	<205	- 20
APODs	<5	<5	5	13	- <5
QLD					
Brisbane ITA	70	7	17	94	+ <5
APODs	24	<5	<10	32	- <5
SA					
Adelaide ITA	16	<5	<5	<25	+ <5
APODs	<5	0	0	<5	+ <5
WA					
Yongah Hill IDC	153	67	54	274	- 10
Perth IDC	12	5	8	25	+ <5
APODs	10	<5	<10	19	+ <5
North West Point IDC	156	16	37	209	+ 20
Christmas Island APODs	0	0	0	0	0
NT					
APODs	<5	0	0	<5	+ <5
Total IDCs	613	143	235	991	+ 9
Total APODs	60	8	26	94	- 6
Total ITAs	187	50	80	317	- 15
Total IDCs/APODs/ITAs	860	201	341	1,402	- 12

* Refer to Important Notice on APODs on page 3.

Table 5 – People in Held Immigration Detention Facilities by Detention Group and Cohort at 31 May 2022

Detention Group	Men	Women	Children	Total	Change from 30/04/22
S501 Visa Cancellation	828	32	0	860	- 2
Unauthorised Maritime Arrival	<200	<5	0	201	- 1
Other	<320	<30	0	341	- 9
Total	1,342	60	0	1,402	- 12

People In Immigration Detention

Nationality

At 31 May 2022, there were 1402 people in held immigration detention facilities. Of these 1402 people, 18.1 per cent were from New Zealand, 7.6 per cent were from Iran, 7.2 per cent were from Vietnam, 4.8 per cent were from Sudan and 4.6 per cent were from India.

Table 6 – People in Held Immigration Detention Facilities by Nationality at 31 May 2022

Nationalities	Men	Women	Children	Total
New Zealand	233	21	0	254
Iran	<110	<5	0	107
Vietnam	90	11	0	101
Sudan	<65	<5	0	67
India	<65	<5	0	65
Iraq	53	0	0	53
Afghanistan	52	0	0	52
Tonga	46	0	0	46
Sri Lanka	42	0	0	42
Stateless	42	0	0	42
United Kingdom	<45	<5	0	42
Other	511	20	0	531
Total	1,342	60	0	1,402

At 31 May 2022, 569 were people living in the community after being approved for a residence determination. Of these 569 people, 52.5 per cent were from Iran, 10 per cent were from Sri Lanka, 10 per cent were Stateless, 8.3 per cent were from Somalia and 3.3 per cent were from Iraq.

Table 7 – People in the Community under Residence Determination by Nationality at 31 May 2022

Nationalities	Men	Women	Children	Total
Iran	104	100	95	299
Sri Lanka	22	12	23	57
Stateless	27	13	17	57
Somalia	16	17	14	47
Iraq	16	<5	<5	19
Other	50	<20	<25	90
Total	235	162	172	569

Children In Immigration Detention

At 31 May 2022 there were no children (aged less than 18 years) in Immigration Residential Housing, Immigration Transit Accommodation and Alternative Places of Detention.

Figure 3 – Children in Immigration Residential Housing, Immigration Transit Accommodation and Alternative Places of Detention

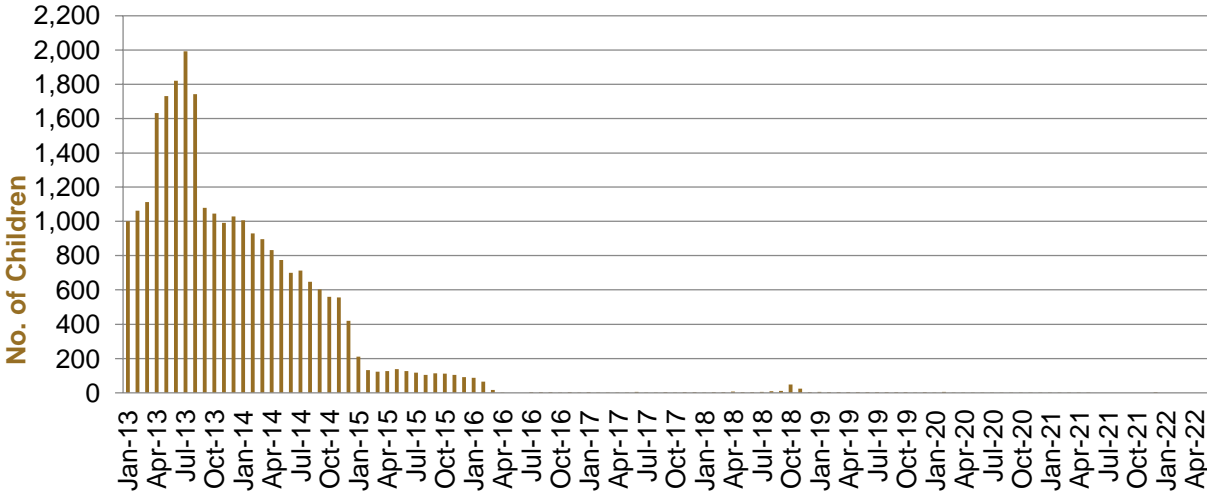


Figure 3 above, shows the number of children in IDFs and APODs from January 2013 to the date of this report. The continuous increase in the number of children in IDFs from April 2013 to Aug 2013 was due to a rapid increase in UMAs during this period. The number of children in IDFs continued to decline during the late 2013 and 2014, with further reduction in January 2015.

At 31 May 2022, the number of children living in the community after being approved for a residence determination has decreased by one to 172 from 173 since the previous report.

Figure 4 – Children in the Community under Residence Determination

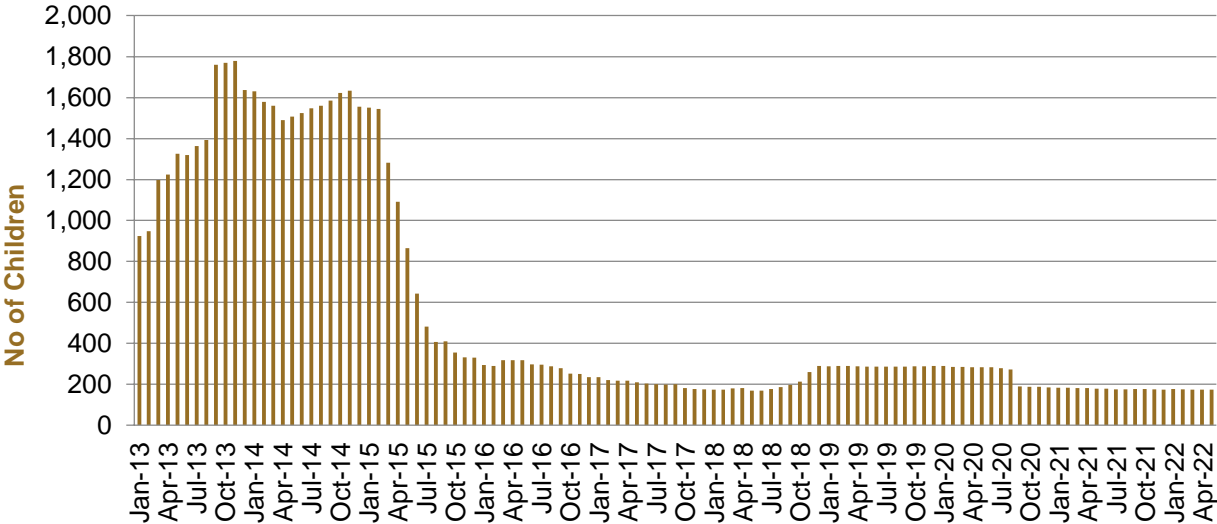


Figure 4 above, shows the number of children in the community under residence determination from January 2013 to the date of this report. The number of children in the community under residence determination, has levelled off at its lowest number since the peak in November 2013, as a result of releases into the community on Bridging E visas.

Table 8 – Children in Immigration Detention and UMA Children in the Community on a Bridging E Visa at 31 May 2022

Placement Type	Children
Immigration Residential Housing	0
Immigration Transit Accommodation	0
Alternative Places of Detention	0
Total Facility	0
Total in the Community under a Residence Determination	172
Total UMAs in the Community on a Bridging E visa (including in re-grant process)	1,451

Time In Immigration Detention Facilities

At 31 May 2022, there were 1402 people in immigration detention facilities.

Of these 1402 people, 17.5 per cent had been detained for 91 days or less and 45.7 per cent had been detained for 365 days or less.

Table 9 – Length of Time of People in Held Immigration Detention Facilities at 31 May 2022

Period Detained	Total	% of Total
7 days or less	24	1.7%
8 days - 31 days	75	5.3%
32 days - 91 days	147	10.5%
92 days - 182 days	157	11.2%
183 days - 365 days	238	17.0%
366 days - 547 days	149	10.6%
548 days - 730 days	116	8.3%
731 days - 1095 days	150	10.7%
1096 days - 1460 days	113	8.1%
1461 days - 1825 days	95	6.8%
Greater than 1825 days	138	9.8%
Total	1,402	100%

At 31 May 2022, the average period of time for people held in detention facilities was 736 days.

Figure 5 – Average Number of Days of People in Held Immigration Detention Facilities only

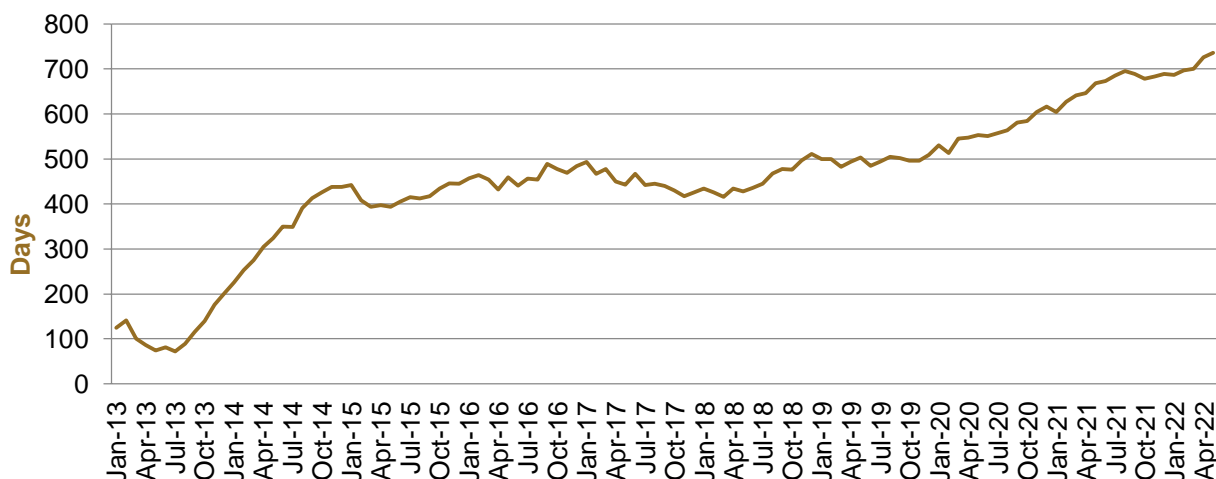


Figure 5 above, shows the average days in held immigration detention at the end of each month from January 2013 to the date of this report. The average period of time for people held in detention facilities steadily increased from July 2013 to January 2015. Between November 2018 and December 2019 the average number of days remained around 500. Since January 2020 the average period of time for people held in detention facilities has steadily increased.

The time an individual spends in immigration detention depends on a range of factors, including the complexity of their case, the legal processes they pursue and whether they voluntarily choose to leave Australia.

Time In Community Under Residence Determination

Of the 569 people in the community under residence determination, as at 31 May 2022, less than three per cent had been in the community for 91 days or less and less than 12 per cent had been in the community for 365 days or less.

Table 10 – Length of Time of People in Community under Residence Determination at 31 May 2022

Period Detained	Total	% of Total
7 days or less	<5	<1.0%
8 days - 31 days	0	0.0%
32 days - 91 days	10	1.8%
92 days - 182 days	9	1.6%
183 days - 365 days	44	7.7%
366 days - 547 days	<5	<1.0%
548 days - 730 days	28	4.9%
731 days - 1095 days	40	7.0%
1096 days - 1460 days	218	38.3%
1461 days - 1825 days	44	7.7%
Greater than 1825 days	171	30.1%
Total	569	100%