



Australian Government
Department of Home Affairs



Australian
BORDER FORCE

Immigration Detention and Community Statistics Summary

31 May 2021

Table of Contents

About this report.....	3
Enquiries.....	3
Acronyms.....	3
Important Notice on APODs.....	3
Immigration Detention And Community Statistics Summary.....	3
In Community under Residence Determination Population By State/Territory.....	5
Immigration Detention Population.....	6
From 1990 to Current.....	6
People In Immigration Detention Facilities.....	7
Arrival Type.....	7
People In Immigration Detention.....	8
Nationality.....	9
Children In Immigration Detention.....	9
Time In Immigration Detention Facilities.....	12
Time In Community Under Residence Determination.....	13

About this report

This report provides an overview of the number of people in onshore immigration detention as at midnight on the date of the report. The report is produced on a monthly basis.

As data is sourced from several departmental processing and recording systems, data relating to the immigration detention population is dynamic and variations between monthly reports can occur. Due to these issues, data from the current financial year should always be considered provisional.

Further information about immigration detention is available at:

<https://www.homeaffairs.gov.au/research-and-statistics/statistics/visa-statistics/live/immigration-detention>

Enquiries

Comments or enquiries concerning this report should be sent using the Department's client service feedback form quoting the name and date of the report.

See: <https://immi.homeaffairs.gov.au/help-support/contact-us>

Acronyms

Table 1 – Acronyms used in this document

Acronym	Description
APOD	Alternative Place of Detention
IMA	Illegal Maritime Arrival
IDC/F	Immigration Detention Centre/Facility
IRH	Immigration Residential Housing
ITA	Immigration Transit Accommodation
S501	Section 501 of the <i>Migration Act 1958</i> (the Migration Act)
S501 Visa Cancellation	Visa cancellations based on character or related grounds

Important Notice on APODs

From July 2020, detainees residing in APODs are reported under 'APODs' rather than under the ITA or IDC that had responsibility for their management and care. APODs include hospitals, aged-care facilities, mental health inpatient facilities, as well as hotel and apartment style accommodation. The number of individuals in APODs is provided by the State and Territory of the APODs.

Immigration Detention And Community Statistics Summary

At 31 May 2021, there were 1486 people in immigration detention facilities.

Of the 1486 people in immigration detention facilities, 1221 (82.2%) have a criminal history.

A further 526 people were living in the community after being approved for residence determination and 12,012 IMAs were living in the community after grant of a Bridging Visa E.

The table below reflects figures based on records in Department of Home Affairs systems.

Table 2 – People in Immigration Detention Centres (IDCs), Alternative Places of Detention (APODs), Immigration Transit Accommodation (ITA) and the Community at 31 May 2021

Place of immigration detention by State*	Men	Women	Children	Total	Change from 30/04/21
NSW					
Villawood IDC	457	28	0	485	+ 7
APODs	<5	<5	0	<5	- <10
VIC					
Melbourne ITA	229	8	0	237	+ <5
APODs	42	0	0	42	+ 7
QLD					
Brisbane ITA	103	0	0	103	- <15
APODs	<20	<5	0	18	- <10
SA					
Adelaide ITA	20	0	0	20	- 9
APODs	0	0	0	0	- <5
WA					
Yongah Hill IDC	311	0	0	311	- 19
Perth IDC	17	7	0	24	+ <5
APODs	<5	0	0	<5	- <10
North West Point IDC	228	0	0	228	+ 24
Christmas Island APODs	<5	<5	<5	<5	0
NT					
Northern APOD	<5	<5	0	7	- <5
APODs	0	0	0	0	0
Total IDCs	1,013	35	0	1,048	+ 13
Total APODs	69	<10	<5	78	- 7
Total ITAs	352	8	0	360	- 17
Total IDCs/APODs/ITAs	1,434	<55	<5	1,486	- 11
Total in Community under Residence Determination	188	160	178	526	- 10
Total IMAs in Community on Bridging Visa E (Including people in a re-grant process)	8,816	1,446	1,750	12,012	- 47

* Refer to Important Notice on APODs on page 3.

In Community under Residence Determination Population By State/Territory

Of the 526 people approved for a residence determination to live in the community, 48.9 per cent were in Victoria, 31.6 per cent in Queensland, 15.8 per cent in New South Wales, 2.1 per cent in South Australia, 1.7 per cent in Western Australia.

Table 3 – People in the Community under Residence Determination by State/Territory at 31 May 2021

State/Territory	Men	Women	Children	Total
New South Wales	30	32	21	83
Victoria	94	76	87	257
Queensland	55	45	66	166
South Australia	<10	<5	<5	11
Western Australia	<5	<5	<5	9
Total	188	160	178	526

Immigration Detention Population

From January 1990 to Current

The overall number of people in immigration detention including in the community under residence determination has decreased by 289 to 2012 compared with 2301 at the end of May 2020. This number takes into account detainees in the community under residence determination and detainees who were held in immigration detention facilities as at 31 May 2021.

Figure 1 – Population in Immigration Detention

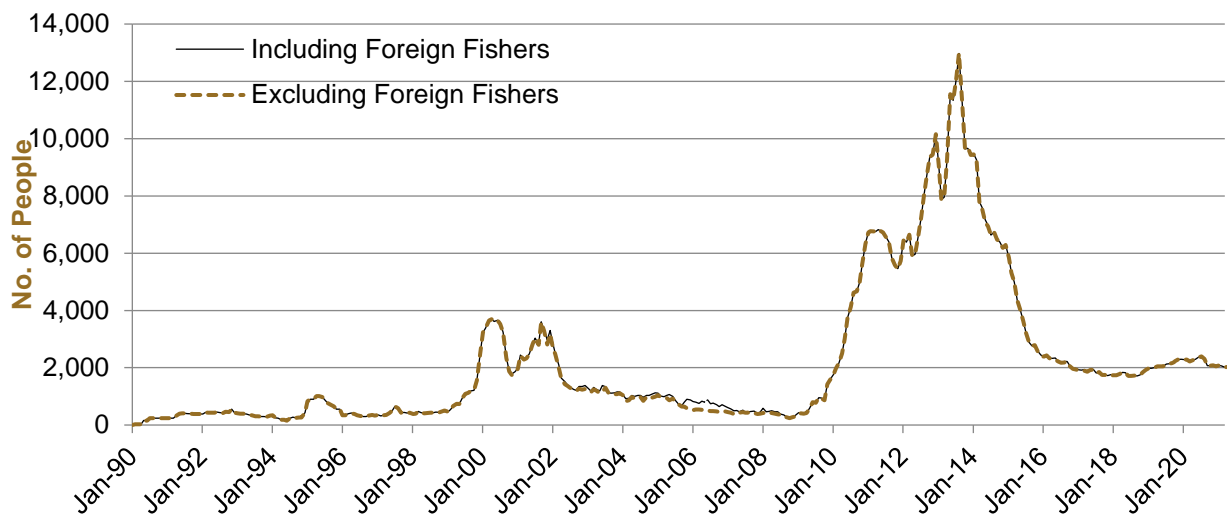


Figure 1 above, shows the number of people in immigration detention from 1990 to 2021.

People In Immigration Detention Facilities

Arrival Type

There were 368 people who arrived unlawfully by air or boat, in held immigration detention facilities at 31 May 2021 representing 24.8 per cent of the total immigration detention population.

There were also 1118 people (75.2 per cent of the total immigration population) who arrived in Australia lawfully and were subsequently taken into immigration detention for either overstaying or having their visas cancelled for breaching visa conditions.

Figure 2 – People in Held Immigration Detention Facilities by Detention Group

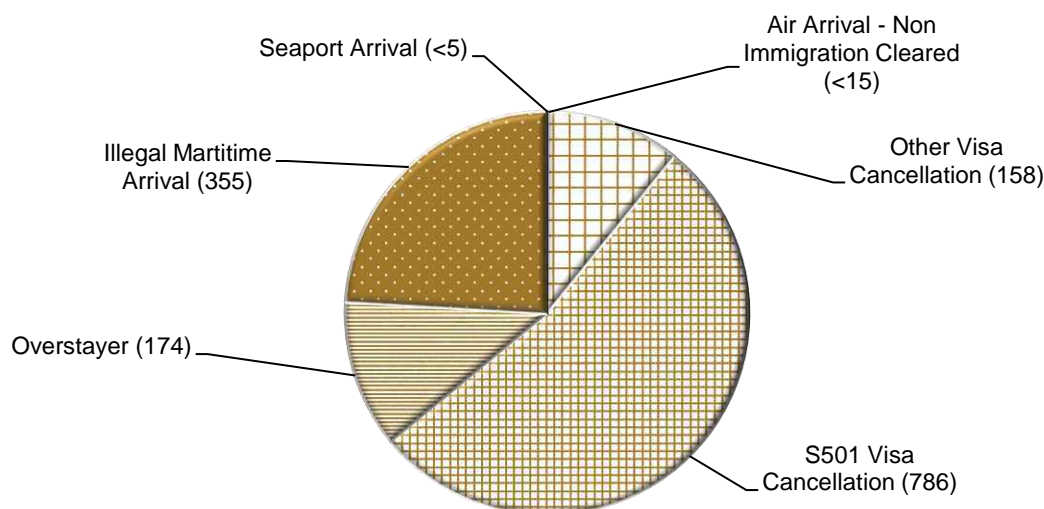


Figure 2 above, shows the number of people in held immigration detention facilities by detention group, including Overstayers, S501 and Other Visa Cancellations, Illegal Maritime Arrivals, Unauthorised Air Arrivals, and if applicable – Illegal Foreign Fishers and Others such as stowaways and ship deserters.

Table 4 – People in Held Immigration Detention Facilities by Detention Group at 31 May 2021

Place of immigration detention by State*	S501 Visa Cancellation	IMA	Other Detention Group	Total	Change from 30/04/21
NSW					
Villawood IDC	278	74	133	485	+ 7
APODs	<5	<5	<5	<5	- <10
VIC					
Melbourne ITA	99	69	69	237	+ <5
APODs	<5	39	<5	42	+ 7
QLD					
Brisbane ITA	53	44	6	103	- <15
APODs	13	<5	<5	18	- <10
SA					
Adelaide ITA	6	9	5	20	- 9
APODs	0	0	0	0	- <5
WA					
Yongah Hill IDC	152	88	71	311	- 19
Perth IDC	13	5	6	24	+ <5
APODs	<5	0	<5	<5	- <10
North West Point IDC	168	14	46	228	+ 24
Christmas Island APODs	0	<5	0	<5	0
NT					
Northern APOD	0	7	0	7	- <5
APODs	0	0	0	0	0
Total IDCs	611	181	256	1,048	+ 13
Total APODs	17	52	9	78	- 7
Total ITAs	158	122	80	360	- 17
Total IDCs/APODs/ITAs	786	355	345	1,486	- 11

* Refer to Important Notice on APODs on page 3.

Table 5 – People in Held Immigration Detention Facilities by Detention Group and Cohort at 31 May 2021

Detention Group	Men	Women	Children	Total	Change from 30/04/21
S501 Visa Cancellation	759	27	0	786	- 15
Illegal Maritime Arrival	<345	<15	<5	355	- 5
Other	<335	<15	0	345	+ 9
Total	1,434	<55	<5	1,486	- 11

People In Immigration Detention

Nationality

At 31 May 2021, there were 1486 people in held immigration detention facilities. Of these 1486 people, 11.8 per cent were from New Zealand, 11.0 per cent were from Iran, 6.3 per cent were from Vietnam, 5.1 per cent were from India and 5.0 per cent were from United Kingdom.

Table 6 – People in Held Immigration Detention Facilities by Nationality at 31 May 2021

Nationalities	Men	Women	Children	Total
New Zealand	158	18	0	176
Iran	157	6	0	163
Vietnam	88	5	0	93
India	<80	<5	0	76
United Kingdom	<75	<5	0	74
Sri Lanka	<70	<5	<5	71
Sudan	<65	<5	0	66
Iraq	65	0	0	65
Afghanistan	53	0	0	53
Pakistan	42	0	0	42
Other	591	16	0	607
Total	1,434	<55	<5	1,486

At 31 May 2021, 526 were people living in the community after being approved for a residence determination. Of these 526 people, 53.2 per cent were from Iran, 10.5 per cent were Stateless, 10.1 per cent were from Sri Lanka, 10.1 per cent were from Somalia and 2.3 per cent were from Pakistan.

Table 7 – People in the Community under Residence Determination by Nationality at 31 May 2021

Nationalities	Men	Women	Children	Total
Iran	86	97	97	280
Stateless	24	11	20	55
Sri Lanka	20	11	22	53
Somalia	18	19	16	53
Pakistan	<15	<5	<5	12
Other	<35	<25	<25	73
Total	188	160	178	526

Children In Immigration Detention

At 31 May 2021 there were less than five children (aged less than 18 years) in Immigration Residential Housing, Immigration Transit Accommodation and Alternative Places of Detention.

Figure 3 – Children in Immigration Residential Housing, Immigration Transit Accommodation and Alternative Places of Detention

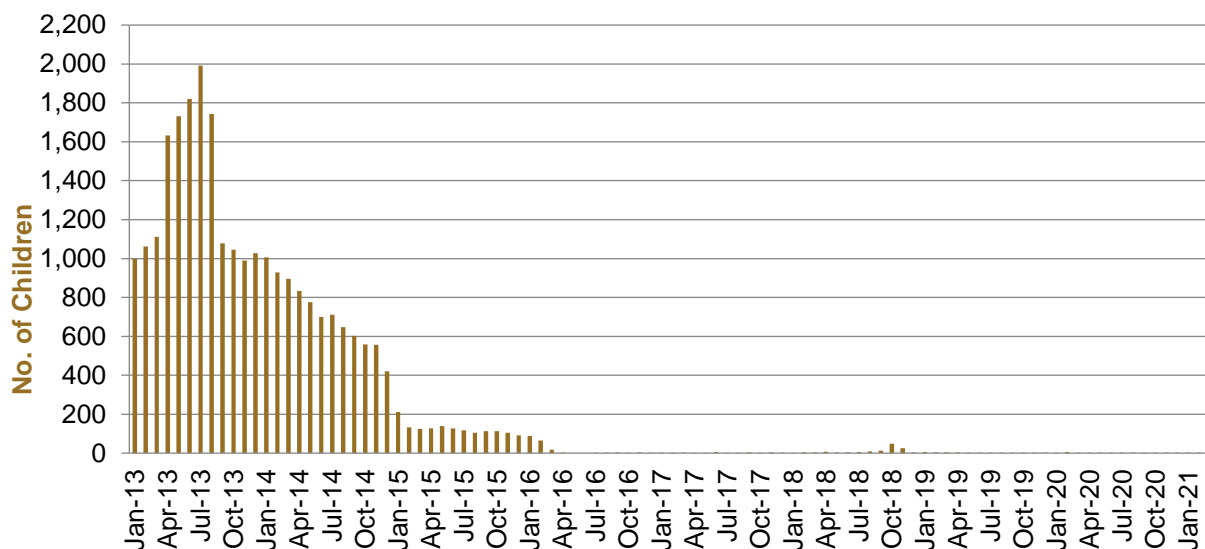


Figure 3 above, shows the number of children in IDFs and APODs from January 2013 to the date of this report. The continuous increase in the number of children in IDFs from April 2013 to Aug 2013 was due to a rapid increase in IMAs during this period. The number of children in IDFs continued to decline during the late 2013 and 2014, with further reduction in January 2015.

At 31 May 2021, the number of children living in the community after being approved for a residence determination has decreased by 3 to 178 from 181 since the previous report.

Figure 4 – Children in the Community under Residence Determination

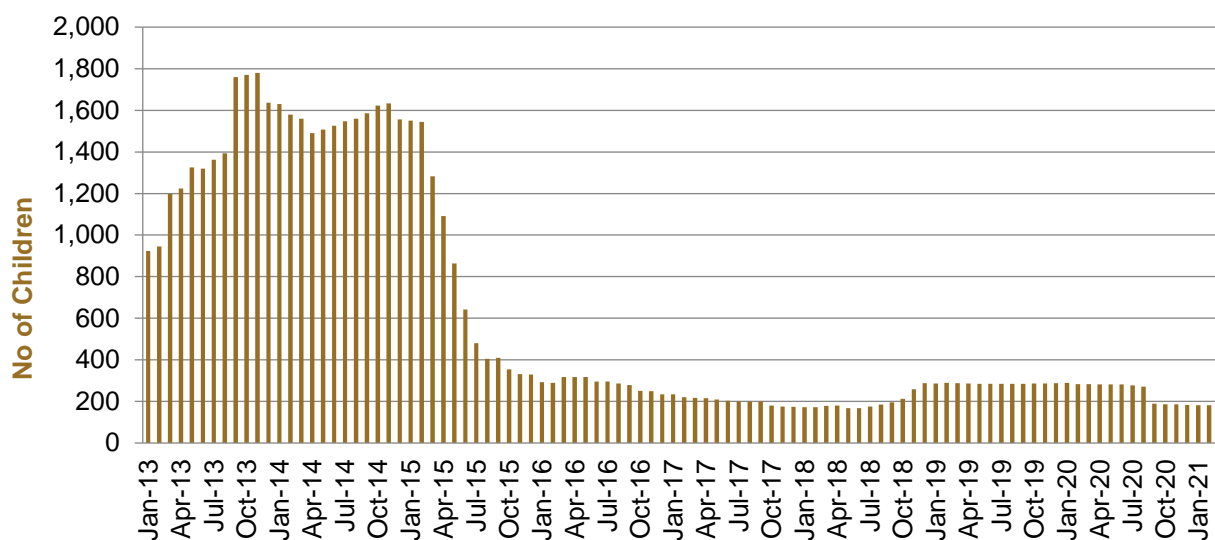


Figure 4 above, shows the number of children in the community under residence determination from January 2013 to the date of this report. The number of children in the community under residence determination, has levelled off at its lowest number since the peak in November 2013, as a result of releases into the community on Bridging E visas.

Table 8 – Children in Immigration Detention and IMA Children in the Community on a Bridging E Visa at 31 May 2021

Placement Type	Children
Immigration Residential Housing	0
Immigration Transit Accommodation	0
Alternative Places of Detention	<5
Total Facility	<5
Total in the Community under a Residence Determination	178
Total IMAs in the Community on a Bridging E visa (including in re-grant process)	1,750

Time In Immigration Detention Facilities

At 31 May 2021, there were 1486 people in immigration detention facilities.

Of these 1486 people, 15.9 per cent had been detained for 91 days or less and 44.1 per cent had been detained for 365 days or less.

Table 9 – Length of Time of People in Held Immigration Detention Facilities at 31 May 2021

Period Detained	Total	% of Total
7 days or less	24	1.6%
8 days - 31 days	67	4.5%
32 days - 91 days	146	9.8%
92 days - 182 days	183	12.3%
183 days - 365 days	235	15.8%
366 days - 547 days	176	11.8%
548 days - 730 days	182	12.2%
731 days - 1095 days	173	11.6%
1096 days - 1460 days	133	9.0%
1461 days - 1825 days	55	3.7%
Greater than 1825 days	112	7.5%
Total	1,486	100%

At 31 May 2021, the average period of time for people held in detention facilities was 668 days.

Figure 5 – Average Number of Days of People in Held Immigration Detention Facilities only

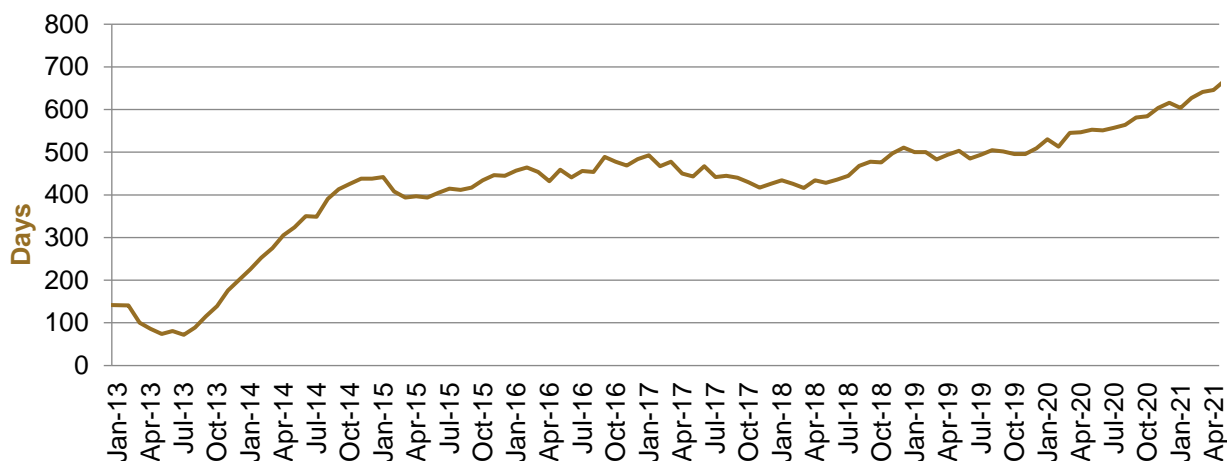


Figure 5 above, shows the average days in held immigration detention at the end of each month from January 2013 to the date of this report. The average period of time for people held in detention facilities steadily increased from July 2013 to January 2015. Between November 2018 and December 2019 the average number of days remained around 500. Since January 2020 the average period of time for people held in detention facilities has steadily increased.

The time an individual spends in immigration detention depends on a range of factors, including the complexity of their case, the legal processes they pursue and whether they voluntarily choose to leave Australia.

Time In Community Under Residence Determination

Of the 526 people in the community under residence determination, as at 31 May 2021, less than 1.0 per cent had been in the community for 91 days or less and 5.9 per cent had been in the community for 365 days or less.

Table 10 – Length of Time of People in Community under Residence Determination at 31 May 2021

Period Detained	Total	% of Total
7 days or less	0	0.0%
8 days - 31 days	0	0.0%
32 days - 91 days	<5	<1.0%
92 days - 182 days	0	0.0%
183 days - 365 days	29	5.5%
366 days - 547 days	<10	<2.0%
548 days - 730 days	35	6.7%
731 days - 1095 days	229	43.5%
1096 days - 1460 days	44	8.4%
1461 days - 1825 days	40	7.6%
Greater than 1825 days	138	26.2%
Total	526	100%