



Australian Government
Department of Home Affairs



Australian
BORDER FORCE

Immigration Detention and Community Statistics Summary

31 July 2021

Table of Contents

About this report.....	3
Enquiries.....	3
Acronyms.....	3
Important Notice on APODs.....	3
Immigration Detention And Community Statistics Summary.....	3
In Community under Residence Determination Population By State/Territory.....	5
Immigration Detention Population.....	6
From 1990 to Current.....	6
People In Immigration Detention Facilities.....	7
Arrival Type.....	7
People In Immigration Detention.....	8
Nationality.....	9
Children In Immigration Detention.....	9
Time In Immigration Detention Facilities.....	12
Time In Community Under Residence Determination.....	13

About this report

This report provides an overview of the number of people in onshore immigration detention as at midnight on the date of the report. The report is produced on a monthly basis.

As data is sourced from several departmental processing and recording systems, data relating to the immigration detention population is dynamic and variations between monthly reports can occur. Due to these issues, data from the current financial year should always be considered provisional.

Further information about immigration detention is available at:

<https://www.homeaffairs.gov.au/research-and-statistics/statistics/visa-statistics/live/immigration-detention>

Enquiries

Comments or enquiries concerning this report should be sent using the Department's client service feedback form quoting the name and date of the report.

See: <https://immi.homeaffairs.gov.au/help-support/contact-us>

Acronyms

Table 1 – Acronyms used in this document

Acronym	Description
APOD	Alternative Place of Detention
IMA	Illegal Maritime Arrival
IDC/F	Immigration Detention Centre/Facility
IRH	Immigration Residential Housing
ITA	Immigration Transit Accommodation
S501	Section 501 of the <i>Migration Act 1958</i> (the Migration Act)
S501 Visa Cancellation	Visa cancellations based on character or related grounds

Important Notice on APODs

From July 2020, detainees residing in APODs are reported under 'APODs' rather than under the ITA or IDC that had responsibility for their management and care. APODs include hospitals, aged-care facilities, mental health inpatient facilities, as well as hotel and apartment style accommodation. The number of individuals in APODs is provided by the State and Territory of the APODs.

Immigration Detention And Community Statistics Summary

At 31 July 2021, there were 1481 people in immigration detention facilities.

Of the 1481 people in immigration detention facilities, 1245 (84.1%) have a criminal history.

A further 519 people were living in the community after being approved for residence determination and 11,766 IMAs were living in the community after grant of a Bridging Visa E.

The table below reflects figures based on records in Department of Home Affairs systems.

Table 2 – People in Immigration Detention Centres (IDCs), Alternative Places of Detention (APODs), Immigration Transit Accommodation (ITA) and the Community at 31 July 2021

Place of immigration detention by State*	Men	Women	Children	Total	Change from 30/06/21
NSW					
Villawood IDC	451	28	0	479	- 26
APODs	<30	<5	0	30	+ 23
VIC					
Melbourne ITA	<225	<15	0	232	- 7
APODs	51	0	0	51	+ 6
QLD					
Brisbane ITA	101	0	0	101	0
APODs	<15	<5	0	15	+ 4
SA					
Adelaide ITA	<25	<5	0	24	+ 5
APODs	<5	0	0	<5	+ <5
WA					
Yongah Hill IDC	301	0	0	301	- 6
Perth IDC	17	7	0	24	+ 2
APODs	8	0	0	8	- 1
North West Point IDC	208	0	0	208	- 11
Christmas Island APODs	0	0	0	0	0
NT					
Northern APOD	<5	<5	0	<10	- <5
Total IDCs	977	35	0	1,012	- 41
Total APODs	106	6	0	112	+ 32
Total ITAs	346	11	0	357	- 2
Total IDCs/APODs/ITAs	1,429	52	0	1,481	- 11
Total in Community under Residence Determination	187	157	175	519	- 7
Total IMAs in Community on Bridging Visa E (Including people in a re-grant process)	8,686	1,405	1,675	11,766	- 125

* Refer to Important Notice on APODs on page 3.

In Community under Residence Determination Population By State/Territory

Of the 519 people approved for a residence determination to live in the community, 49.5 per cent were in Victoria, 30.6 per cent in Queensland, 15.8 per cent in New South Wales, 2.1 per cent in South Australia, 1.9 per cent in Western Australia.

Table 3 – People in the Community under Residence Determination by State/Territory at 31 July 2021

State/Territory	Men	Women	Children	Total
New South Wales	30	32	20	82
Victoria	95	76	86	257
Queensland	53	42	64	159
South Australia	<10	<5	<5	11
Western Australia	<5	<5	<5	10
Total	187	157	175	519

Immigration Detention Population

From January 1990 to Current

The overall number of people in immigration detention including in the community under residence determination has decreased by 392 to 2000 compared with 2392 at the end of July 2020. This number takes into account detainees in the community under residence determination and detainees who were held in immigration detention facilities as at 31 July 2021.

Figure 1 – Population in Immigration Detention

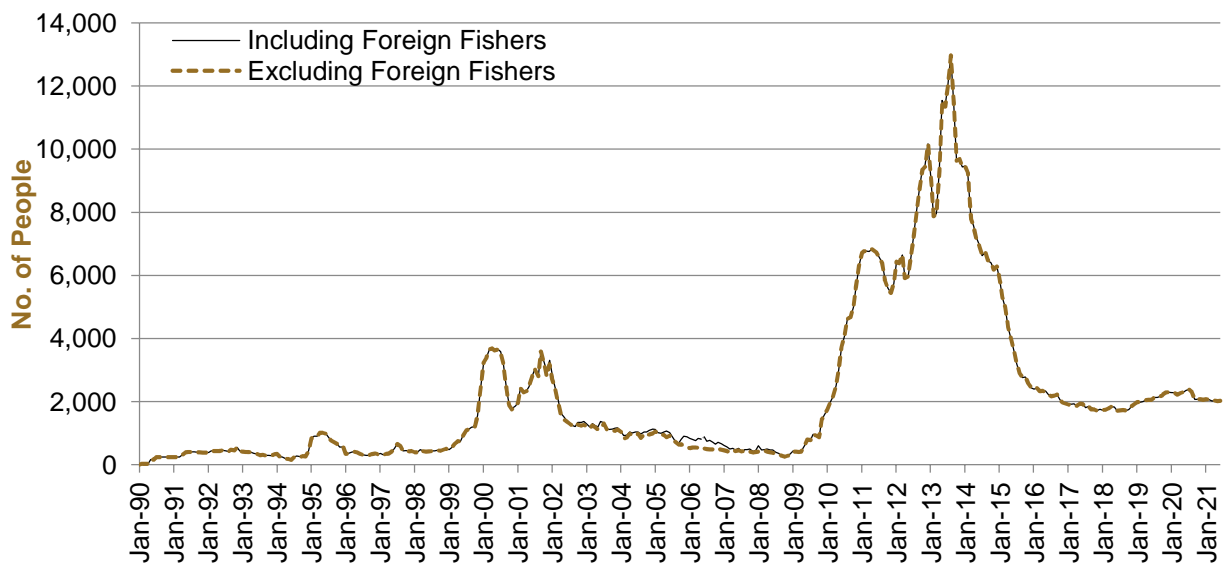


Figure 1 above, shows the number of people in immigration detention from 1990 to 2021.

People In Immigration Detention Facilities

Arrival Type

There were 348 people who arrived unlawfully by air or boat, in held immigration detention facilities at 31 July 2021 representing 23.5 per cent of the total immigration detention population.

There were also 1133 people (76.5 per cent of the total immigration population) who arrived in Australia lawfully and were subsequently taken into immigration detention for either overstaying or having their visas cancelled for breaching visa conditions.

Figure 2 – People in Held Immigration Detention Facilities by Detention Group

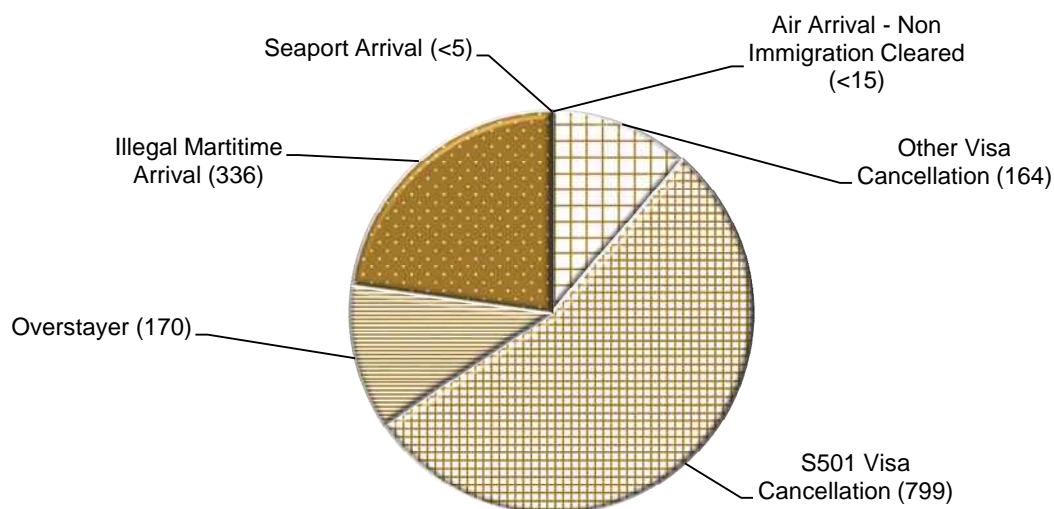


Figure 2 above, shows the number of people in held immigration detention facilities by detention group, including Overstayers, S501 and Other Visa Cancellations, Illegal Maritime Arrivals, Unauthorised Air Arrivals, and if applicable – Illegal Foreign Fishers and Others such as stowaways and ship deserters.

Table 4 – People in Held Immigration Detention Facilities by Detention Group at 31 July 2021

Place of immigration detention by State*	S501 Visa Cancellation	IMA	Other Detention Group	Total	Change from 30/06/21
NSW					
Villawood IDC	281	72	126	479	- 26
APODs	17	<5	<15	30	+ 23
VIC					
Melbourne ITA	<105	57	<80	232	- 7
APODs	<5	47	<5	51	+ 6
QLD					
Brisbane ITA	58	37	6	101	0
APODs	<15	0	<5	15	+ 4
SA					
Adelaide ITA	<15	8	<5	24	+ 5
APODs	0	0	<5	<5	+ <5
WA					
Yongah Hill IDC	147	82	72	301	- 6
Perth IDC	11	7	6	24	+ 2
APODs	<5	0	<10	8	- 1
North West Point IDC	153	16	39	208	- 11
Christmas Island APODs	0	0	0	0	0
NT					
Northern APOD	0	<10	0	<10	- <5
Total IDCs	592	177	243	1,012	- 41
Total APODs	35	57	20	112	+ 32
Total ITAs	172	102	83	357	- 2
Total IDCs/APODs/ITAs	799	336	346	1,481	- 11

* Refer to Important Notice on APODs on page 3.

Table 5 – People in Held Immigration Detention Facilities by Detention Group and Cohort at 31 July 2021

Detention Group	Men	Women	Children	Total	Change from 30/06/21
S501 Visa Cancellation	773	26	0	799	+ 1
Illegal Maritime Arrival	326	10	0	336	- 10
Other	330	16	0	346	- 2
Total	1,429	52	0	1,481	- 11

People In Immigration Detention

Nationality

At 31 July 2021, there were 1481 people in held immigration detention facilities. Of these 1481 people, 12.4 per cent were from New Zealand, 10.7 per cent were from Iran, 8.0 per cent were from Vietnam, 5.1 per cent were from India and 4.5 per cent were from Sudan.

Table 6 – People in Held Immigration Detention Facilities by Nationality at 31 July 2021

Nationalities	Men	Women	Children	Total
New Zealand	166	18	0	184
Iran	153	6	0	159
Vietnam	110	8	0	118
India	<75	<5	0	75
Sudan	<65	<5	0	66
Iraq	64	0	0	64
Sri Lanka	62	0	0	62
United Kingdom	<60	<5	0	60
Afghanistan	56	0	0	56
Pakistan	43	0	0	43
Other	578	16	0	594
Total	1,429	52	0	1,481

At 31 July 2021, 519 were people living in the community after being approved for a residence determination. Of these 519 people, 53.2 per cent were from Iran, 10.6 per cent were Stateless, 10.4 per cent were from Sri Lanka, 9.8 per cent were from Somalia and 2.3 per cent were from Pakistan.

Table 7 – People in the Community under Residence Determination by Nationality at 31 July 2021

Nationalities	Men	Women	Children	Total
Iran	84	96	96	276
Stateless	25	11	19	55
Sri Lanka	20	11	23	54
Somalia	17	18	16	51
Pakistan	<15	<5	<5	12
Other	<35	<25	<25	71
Total	187	157	175	519

Children In Immigration Detention

At 31 July 2021 there were no children (aged less than 18 years) in Immigration Residential Housing, Immigration Transit Accommodation and Alternative Places of Detention.

Figure 3 – Children in Immigration Residential Housing, Immigration Transit Accommodation and Alternative Places of Detention

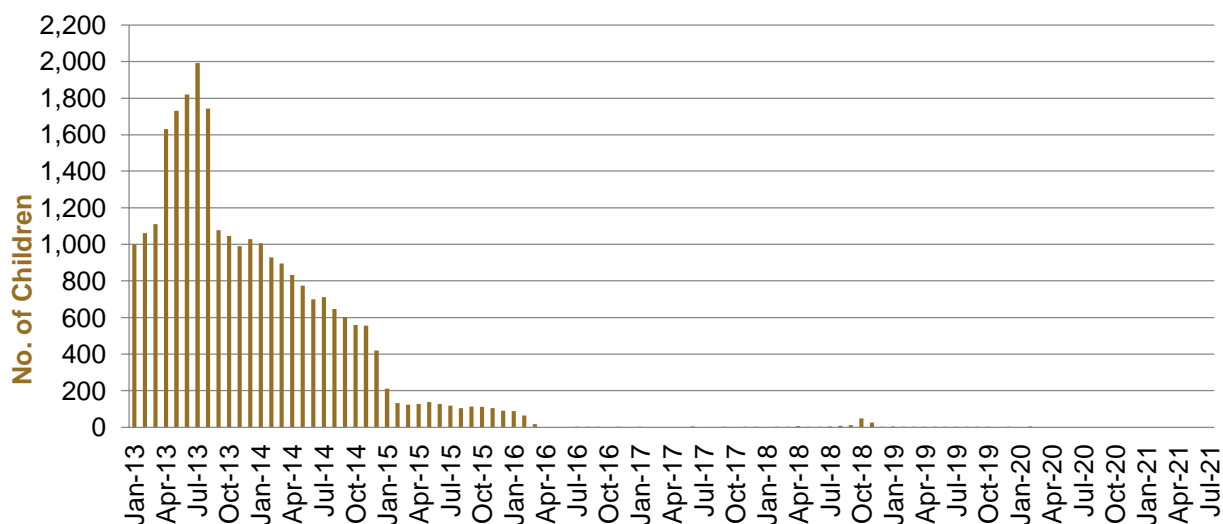


Figure 3 above, shows the number of children in IDFs and APODs from January 2013 to the date of this report. The continuous increase in the number of children in IDFs from April 2013 to Aug 2013 was due to a rapid increase in IMAs during this period. The number of children in IDFs continued to decline during the late 2013 and 2014, with further reduction in January 2015.

At 31 July 2021, the number of children living in the community after being approved for a residence determination has decreased by 3 to 175 from 178 since the previous report.

Figure 4 – Children in the Community under Residence Determination

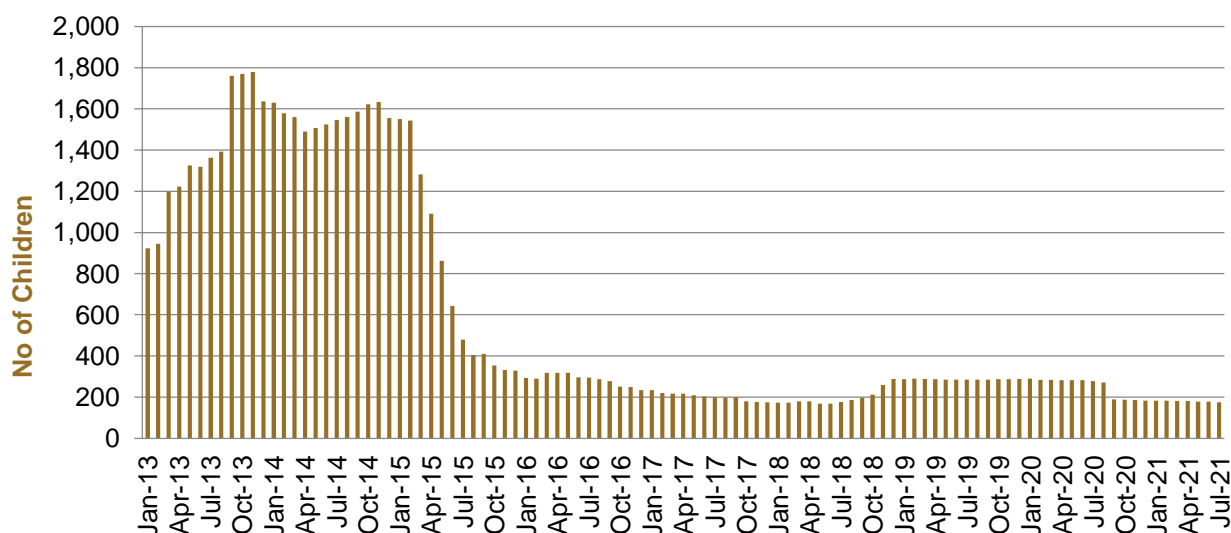


Figure 4 above, shows the number of children in the community under residence determination from January 2013 to the date of this report. The number of children in the community under residence determination, has levelled off at its lowest number since the peak in November 2013, as a result of releases into the community on Bridging E visas.

Table 8 – Children in Immigration Detention and IMA Children in the Community on a Bridging E Visa at 31 July 2021

Placement Type	Children
Immigration Residential Housing	0
Immigration Transit Accommodation	0
Alternative Places of Detention	0
Total Facility	0
Total in the Community under a Residence Determination	175
Total IMAs in the Community on a Bridging E visa (including in re-grant process)	1,675

Time In Immigration Detention Facilities

At 31 July 2021, there were 1481 people in immigration detention facilities.

Of these 1481 people, 15.5 per cent had been detained for 91 days or less and 43.3 per cent had been detained for 365 days or less.

Table 9 – Length of Time of People in Held Immigration Detention Facilities at 31 July 2021

Period Detained	Total	% of Total
7 days or less	25	1.7%
8 days - 31 days	56	3.8%
32 days - 91 days	149	10.1%
92 days - 182 days	193	13.0%
183 days - 365 days	218	14.7%
366 days - 547 days	168	11.3%
548 days - 730 days	173	11.7%
731 days - 1095 days	189	12.8%
1096 days - 1460 days	128	8.6%
1461 days - 1825 days	66	4.5%
Greater than 1825 days	116	7.8%
Total	1,481	100%

At 31 July 2021, the average period of time for people held in detention facilities was 685 days.

Figure 5 – Average Number of Days of People in Held Immigration Detention Facilities only

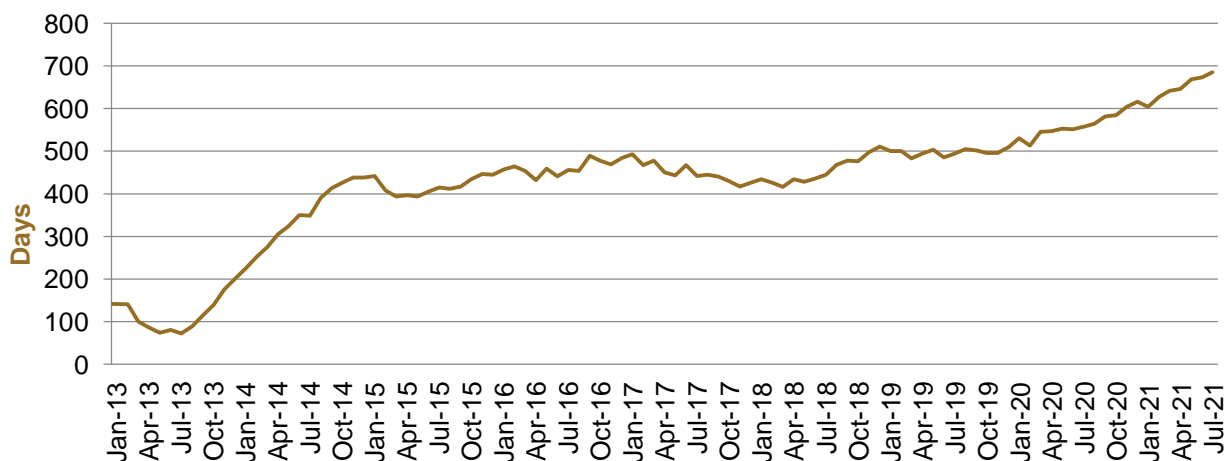


Figure 5 above, shows the average days in held immigration detention at the end of each month from January 2013 to the date of this report. The average period of time for people held in detention facilities steadily increased from July 2013 to January 2015. Between November 2018 and December 2019 the average number of days remained around 500. Since January 2020 the average period of time for people held in detention facilities has steadily increased.

The time an individual spends in immigration detention depends on a range of factors, including the complexity of their case, the legal processes they pursue and whether they voluntarily choose to leave Australia.

Time In Community Under Residence Determination

Of the 519 people in the community under residence determination, as at 31 July 2021, less than 1.0 per cent had been in the community for 91 days or less and 6.2 per cent had been in the community for 365 days or less.

Table 10 – Length of Time of People in Community under Residence Determination at 31 July 2021

Period Detained	Total	% of Total
7 days or less	0	0.0%
8 days - 31 days	0	0.0%
32 days - 91 days	<5	<1.0%
92 days - 182 days	<5	<1.0%
183 days - 365 days	28	5.4%
366 days - 547 days	6	1.2%
548 days - 730 days	32	6.2%
731 days - 1095 days	213	41.0%
1096 days - 1460 days	51	9.8%
1461 days - 1825 days	45	8.7%
Greater than 1825 days	140	27.0%
Total	519	100%