



Australian Government
Department of Home Affairs



Australian
BORDER FORCE

Immigration Detention and Community Statistics Summary

31 January 2020

Table of Contents

About this report.....	3
Enquiries.....	3
Acronyms.....	3
Immigration Detention And Community Statistics Summary.....	4
In Community under Residence Determination Population By State/Territory.....	5
Immigration Detention Population.....	6
From 1990 to Current.....	6
People In Immigration Detention Facilities.....	7
Arrival Type.....	7
People In Immigration Detention.....	7
Nationality.....	8
Children In Immigration Detention.....	9
Time In Immigration Detention Facilities.....	11
Time In Community Under Residence Determination.....	12

About this report

This report provides an overview of the number of people in immigration detention and Regional Processing Centres as at midnight on the date of the report. The report is produced on a monthly basis.

Data is sourced from several departmental processing and recording systems. Data relating to the immigration detention population is dynamic and there can be delays in transmission of information from the Department's immigration detention network operations. Variations in figures between this report and previous issues can occur. Due to these issues, data from the current financial year should always be considered provisional.

Further information about immigration detention is available at:

<https://www.homeaffairs.gov.au/research-and-statistics/statistics/visa-statistics/live/immigration-detention>

Enquiries

Comments or enquiries concerning this report should be sent using the Department's client service feedback form quoting the name and date of the report.

See: <https://immi.homeaffairs.gov.au/help-support/contact-us>

Acronyms

Table 1 – Acronyms used in this document

Acronym	Description
APOD	Alternative Place of Detention
IMA	Illegal Maritime Arrival
IDC/F	Immigration Detention Centre/Facility
IRH	Immigration Residential Housing
ITA	Immigration Transit Accommodation
RPC	Regional Processing Centre
S501	Section 501 of the <i>Migration Act 1958</i> (the Migration Act)
S501 Visa Cancellation	Visa cancellations based on character or related grounds

Immigration Detention And Community Statistics Summary

At 31 January 2020, there were 1432 people in immigration detention facilities, including 1428 in immigration detention on the mainland and less than 5 in immigration detention on Christmas Island.

A further 852 people were living in the community after being approved for a residence determination and 12,981 IMAs were living in the community after grant of a Bridging Visa E.

The table below reflects figures based on records in Department of Home Affairs systems.

Table 2 – People in Immigration Detention Facilities (IDFs), Alternative Places of Detention (APODs), Regional Processing Centres (RPCs) and the Community at 31 January 2020

Place of immigration detention	Men	Women	Children	Total	Change from Previous Summary 31/12/19
Perth IDC	19	8	0	27	+ 1
Villawood IDC	443	29	0	472	- 17
Yongah Hill IDC	359	0	0	359	- 9
Christmas Island APODs	<5	<5	<5	<5	0
Mainland APODs	<5	<5	0	<5	- 7
Total IDCs/APODs	823	39	<5	864	- 32
Adelaide ITA	25	0	0	25	0
Brisbane ITA	208	<5	0	211	+ 11
Melbourne ITA	307	25	0	332	+ 3
Total in IRH and ITA	540	28	0	568	+ 14
Total in IDC/F	1,363	67	<5	1,432	- 18
Total in Community under Residence Determination	301	262	289	852	+ 1
Total IMAs in Community on Bridging Visa E (Including people in a re-grant process)	9,391	1,553	2,037	12,981	- 163
Total RPCs	0	0	0	0	0
Detention Group					
S501 Visa Cancellation	601	28	0	629	+ 5
Illegal Maritime Arrival	494	10	<5	506	+ 2
Other	268	29	0	297	- 25
Total	1,363	67	<5	1,432	- 18

In Community under Residence Determination Population By State/Territory

Of the 852 people approved for a residence determination to live in the community, 35.8 per cent were in Queensland, 30.8 per cent in Victoria, 19.2 per cent in New South Wales, 10.6 per cent in South Australia, 3.6 per cent in Western Australia.

Table 3 – People in the Community under Residence Determination by State/Territory at 31 January 2020

State/Territory	Adult Male	Adult Female	Child Male (<18 years)	Child Female (<18 years)	Total
Queensland	114	88	54	49	305
Victoria	89	77	56	40	262
New South Wales	57	63	26	18	164
South Australia	27	26	17	20	90
Western Australia	14	8	<5	5	31
Total	301	262	157	132	852

Immigration Detention Population

From January 1990 to Current

The overall number of people in immigration detention including in the community under residence determination has increased by 303 to 2284 compared with 1984 at the end of January 2019. This number takes into account releases of detainees into the community under residence determination and detainees who were held in immigration detention facilities as at 31 January 2020.

Figure 1 – Population in Immigration Detention

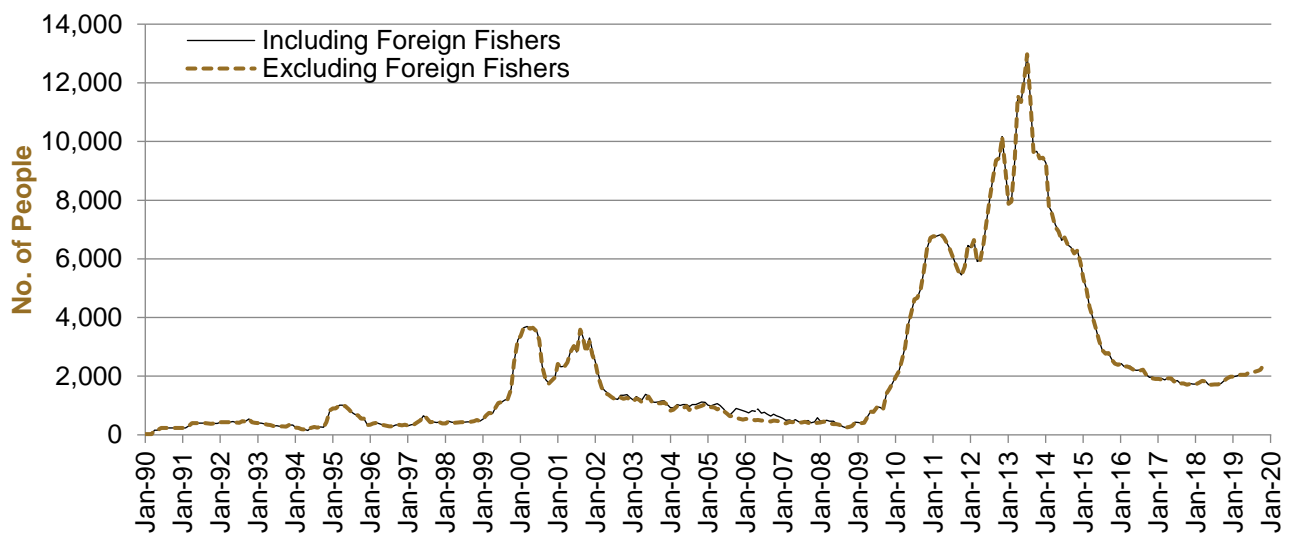


Figure 2 above, shows the number of people in immigration detention from 1990 to the date of this report.

People In Immigration Detention Facilities

Arrival Type

There were 552 people who arrived unlawfully by air or boat, in held immigration detention facilities at 31 January 2020 representing 38.5 per cent of the total immigration detention population.

There were also 880 people (61.5 per cent of the total immigration population) who were taken into immigration detention for either overstaying or having their visas cancelled for breaching visa conditions.

Figure 2 – People in Held Immigration Detention Facilities by Detention Group

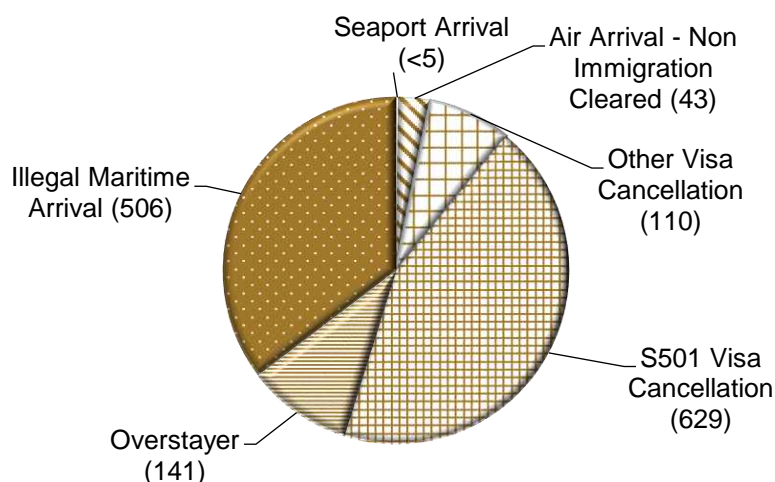


Figure 2 above, shows the number of people in held immigration detention facilities by detention group, including Overstayers, S501 and Other Visa Cancellations, Illegal Maritime Arrivals, Unauthorised Air Arrivals, and if applicable – Inadequately Documented Crew Members and Others such as stowaways and ship deserters.

Table 4 – People in Held Immigration Detention Facilities by Detention Group at 31 January 2020

Place of immigration detention	S501 Visa Cancellation	IMA	Other Detention Group	Total	Change from Previous Summary 31/12/19
Perth IDC	14	5	8	27	+ 1
Villawood IDC	269	88	115	472	- 17
Yongah Hill IDC	206	89	64	359	- 9
Christmas Island APODs	0	<5	0	<5	0
Mainland APODs	0	<5	<5	<5	- 7
Total IDCs/APODs	489	187	188	864	- 32
Adelaide ITA	<5	13	8	25	0
Brisbane ITA	46	140	25	211	+ 11
Melbourne ITA	90	166	76	332	+ 3
Total in IRH and ITA	140	319	109	568	+ 14
Total in IDC/F	629	506	297	1,432	- 18

People In Immigration Detention

Nationality

At 31 January 2020, there were 1432 people in held immigration detention facilities. Of these 1432 people, 14.5 per cent were from Iran, 10.9 per cent were from New Zealand, 6.4 per cent were from Sudan, 6.1 per cent were from Sri Lanka and 5.1 per cent were from Iraq.

Table 5 – People in Held Immigration Detention Facilities by Nationality at 31 January 2020

Nationalities	Adult Male	Adult Female	Child Male (<18 years)	Child Female (<18 years)	Total
Iran	200	7	0	0	207
New Zealand	142	14	0	0	156
Sudan	90	<5	0	0	92
Sri Lanka	81	5	0	<5	88
Iraq	73	0	0	0	73
Vietnam	59	7	0	0	66
United Kingdom	61	<5	0	0	65
Afghanistan	58	0	0	0	58
India	55	0	0	0	55
Stateless	43	0	0	0	43
Other	501	28	0	0	529
Total	1,363	67	0	<5	1,432

At 31 January 2020, 852 were people living in the community after being approved for a residence determination. Of these 852 people, 52 per cent were from Iran, 12.6 per cent were from Stateless, 10.7 per cent were from Sri Lanka, 8.1 per cent were from Somalia and 3.4 per cent were from Iraq.

Table 6 – People in the Community under Residence Determination by Nationality at 31 January 2020

Nationalities	Adult Male	Adult Female	Child Male (<18 years)	Child Female (<18 years)	Total
Iran	149	153	78	63	443
Stateless	39	29	16	23	107
Sri Lanka	31	21	21	18	91
Somalia	20	27	13	9	69
Iraq	20	<5	<5	<5	29
Other	42	28	26	17	113
Total	301	262	157	132	852

Children In Immigration Detention

At 31 January 2020 there were less than five children (aged less than 18 years) in Immigration Residential Housing, Immigration Transit Accommodation and Alternative Places of Detention.

Figure 3 – Children in Immigration Residential Housing, Immigration Transit Accommodation and Alternative Places of Detention

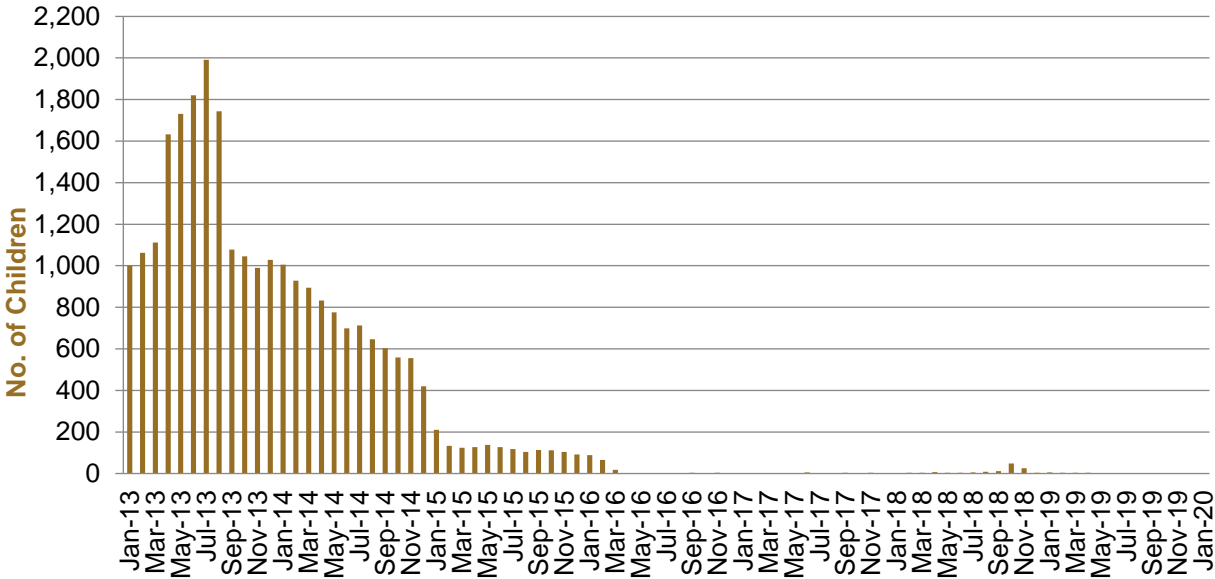


Figure 3 above, shows the number of children in Immigration Detention Facilities and Alternative Places of Detention from January 2013 to the date of this report. The continuous increase in the number of children in detention facilities from April 2013 to August 2013 was due to a rapid increase in illegal maritime arrivals during this period. The number of children in immigration detention facilities decreased in September 2013, as children completed mandatory processing and were transferred into the community. The number of children in detention facilities continued to decline during the late 2013 and 2014, with further reduction in January 2015. The increase in the number of children in alternative places of detention from August 2018 was following transfers from Nauru to Australia (with family members).

At 31 January 2020, the number of children living in the community after being approved for a residence determination increased by one to 289 from 288 in the previous report.

Figure 4 – Children in the Community under Residence Determination

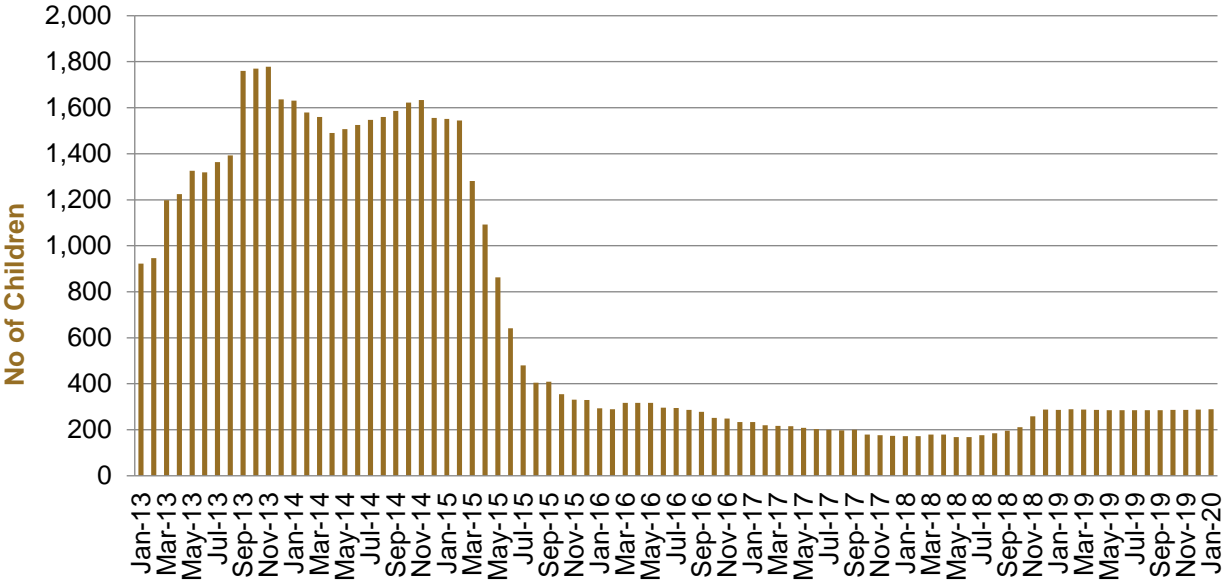


Figure 4 above, shows the number of children in the community under residence determination from January 2012 to the date of this report. The number of children in the community under residence determination, has levelled off at its lowest number since the peak in November 2013, as a result of releases into the community on Bridging E visas.

Table 7 – Children in Immigration Detention and IMA Children in the Community on a Bridging E Visa at 31 January 2020

Placement Type	Children
Immigration Residential Housing	0
Immigration Transit Accommodation	0
Alternative Places of Detention	<5
Total Facility	<5
Total in the Community under a Residence Determination	289
Total IMAs in the Community on a Bridging E visa (including in re-grant process)	2,037

Time In Immigration Detention Facilities

At 31 January 2020, there were 1432 people in immigration detention facilities.

Of these 1432 people, 22.7 per cent had been detained for 91 days or less and 58.4 per cent had been detained for 365 days or less

Table 8 – Length of Time of People in Held Immigration Detention Facilities at 31 January 2020

Period Detained	Total	% of Total
7 days or less	46	3.2%
8 days - 31 days	77	5.4%
32 days - 91 days	202	14.1%
92 days - 182 days	249	17.4%
183 days - 365 days	262	18.3%
366 days - 547 days	136	9.5%
548 days - 730 days	113	7.9%
Greater than 730 days	347	24.2%
Total	1,432	100%

At 31 January 2020, the average period of time for people held in detention facilities was 530 days.

Figure 5 – Average Number of Days of People in Held Immigration Detention Facilities only

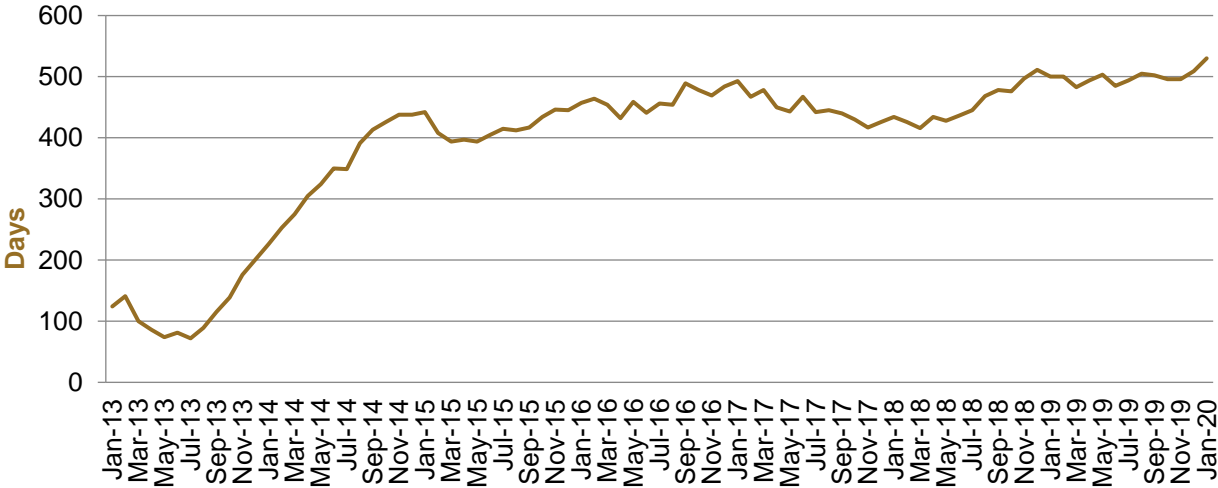


Figure 5 above, shows the average days in held immigration detention at the end of each month from January 2013 to the date of this report. The average period of time for people held in detention facilities steadily increased from July 2013 to January 2015. Since November 2018 the average number of days has remained around 500.

Time In Community Under Residence Determination

Of the 852 people in the community under residence determination, as at 31 January 2020, 2.3 per cent had been in the community for 91 days or less and 18.7 per cent had been in the community for 365 days or less.

Table 9 – Length of Time of People in Community under Residence Determination at 31 January 2020

Period Detained	Total	% of Total
7 days or less	<5	0.2%
8 days - 31 days	0	0.0%
32 days - 91 days	17	2.0%
92 days - 182 days	54	6.3%
183 days - 365 days	86	10.1%
366 days - 547 days	326	38.3%
548 days - 730 days	54	6.3%
Greater than 730 days	313	36.8%
Total	852	100%