



Australian Government
Department of Home Affairs



Australian
BORDER FORCE

Immigration Detention and Community Statistics Summary

December 2022 (released 10 February 2023)

Table of Contents

About this report	3
Enquiries	3
Acronyms	3
Important Notice on APODs	3
Immigration Detention and Community Statistics Summary	4
In Community under Residence Determination Population by State/Territory	5
Immigration Detention Population.....	6
From January 1990 to Current.....	6
People In Immigration Detention Facilities.....	7
Arrival Type.....	7
People In Immigration Detention	9
Nationality	9
Children In Immigration Detention	10
Time In Immigration Detention Facilities	12
Time In Community Under Residence Determination	13

About this report

This report provides an overview of the number of people in onshore immigration detention, as at the morning of the first day following the end of the reporting month. The report is produced on a monthly basis.

As data is sourced from several departmental processing and recording systems, data relating to the immigration detention population is dynamic and variations between monthly reports can occur. Due to these issues, data from the current financial year should always be considered provisional.

Further information about immigration detention is available at:

<https://www.homeaffairs.gov.au/research-and-statistics/statistics/visa-statistics/live/immigration-detention>

Enquiries

Comments or enquiries concerning this report should be sent using the Department's client service feedback form quoting the name and date of the report.

See: <https://immi.homeaffairs.gov.au/help-support/contact-us>

Acronyms

Table 1 – Acronyms used in this document

Acronym	Description
APOD	Alternative Place of Detention
UMA	Unauthorised Maritime Arrival
IDC/F	Immigration Detention Centre/Facility
IRH	Immigration Residential Housing
ITA	Immigration Transit Accommodation
S501	Section 501 of the <i>Migration Act 1958</i> (the Migration Act)
S501 Visa Cancellation	Visa cancellations based on character or related grounds

Important Notice on APODs

From July 2020, detainees residing in APODs are reported under 'APODs' rather than under the ITA or IDC that had responsibility for their management and care. APODs include hospitals, aged-care facilities, mental health inpatient facilities, as well as hotel and apartment style accommodation. The number of individuals in APODs is provided by the State and Territory of the APODs.

Immigration Detention and Community Statistics Summary

At 31 December 2022, there were 1089 people in immigration detention facilities.

Of the 1089 people in immigration detention facilities, 994 (91.3 per cent) have a criminal history.

A further 538 people were living in the community after being approved for residence determination and 10,721 UMAs were living in the community after grant of a Bridging Visa E.

The table below reflects figures based on records in Department of Home Affairs systems.

Table 2 – People in Immigration Detention Centres (IDCs), Alternative Places of Detention (APODs), Immigration Transit Accommodation (ITA) and the Community at 31 December 2022

Place of immigration detention by State*	Men	Women	Children	Total	Change from 30/11/22
NSW					
Villawood IDC	<340	<25	0	357	- 86
APODs	0	<5	0	<5	- <5
VIC					
Melbourne ITA	184	9	0	193	- 13
APODs	0	0	0	0	- <5
QLD					
Brisbane ITA	88	0	0	88	- 4
APODs	21	6	0	27	+ 4
SA					
Adelaide ITA	24	0	0	24	+ 5
APODs	0	0	0	0	- <5
WA					
Yongah Hill IDC	247	0	0	247	- 31
Perth IDC	<20	<5	0	20	+ 1
APODs	<5	<5	0	<5	- <10
North West Point IDC	127	0	0	127	- 20
Christmas Island APODs	0	0	0	0	0
NT					
APODs	0	0	0	0	- 9
Total IDCs	<730	<30	0	751	- 136
Total APODs	<25	<15	0	33	- 16
Total ITAs	296	9	0	305	- 12
Total IDCs/APODs/ITAs	1,045	44	0	1,089	- 164
Total in Community under Residence Determination	234	150	154	538	- 6
Total UMAs in Community on Bridging Visa E (Including people with a ceased BVE)	8,157	1,222	1,342	10,721	- 28

* Refer to Important Notice on APODs on page 3.

In Community under Residence Determination Population by State/Territory

Of the 538 people approved for a residence determination to live in the community, 47.2 per cent were in Victoria, 31.6 per cent in Queensland, 16.7 per cent in New South Wales, 3.0 per cent in South Australia and 1.5 per cent in Western Australia.

Table 3 – People in the Community under Residence Determination by State/Territory at 31 December 2022

State/Territory	Men	Women	Children	Total
New South Wales	41	26	23	90
Victoria	105	76	73	254
Queensland	72	43	55	170
South Australia	11	<5	<5	16
Western Australia	5	<5	<5	8
Total	234	150	154	538

Immigration Detention Population

From January 1990 to Current

The overall number of people in immigration detention including in the community under residence determination has decreased by 425 to 1627 compared with 2052 at the end of December 2021. This number takes into account detainees in the community under residence determination and detainees who were held in immigration detention facilities as at 31 December 2022.

Figure 1 – Population in Immigration Detention

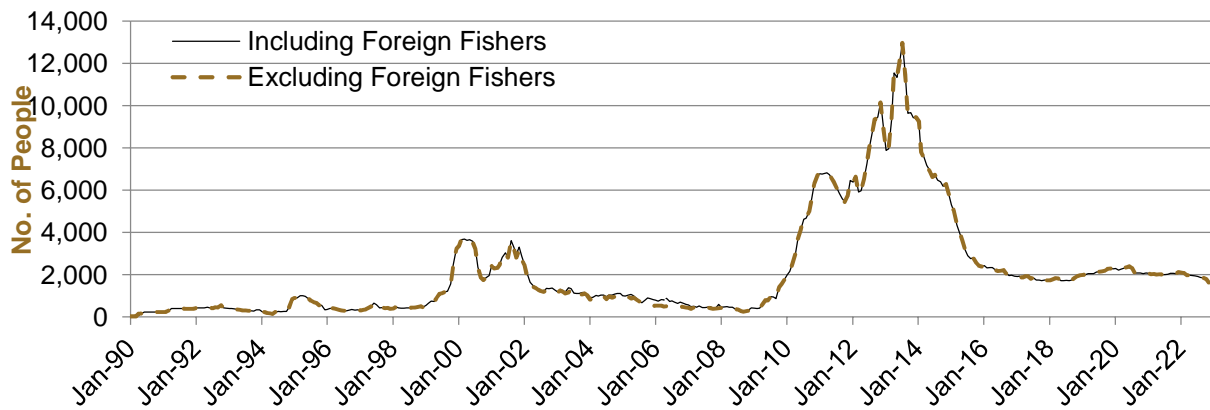


Figure 1 above, shows the number of people in immigration detention from 1990 to 2022.

People In Immigration Detention Facilities

Arrival Type

There were 178 people who arrived unlawfully by air or boat, in held immigration detention facilities at 31 December 2022 representing 16.3 per cent of the total immigration detention population.

There were also 911 people (83.7 per cent of the total immigration detention population) who arrived in Australia lawfully and were subsequently taken into immigration detention for either overstaying or having their visas cancelled for reasons including failing the character test, breaching their visa conditions or presenting a risk to the safety, health or good order of the community.

Figure 2 – People in Held Immigration Detention Facilities by Detention Group

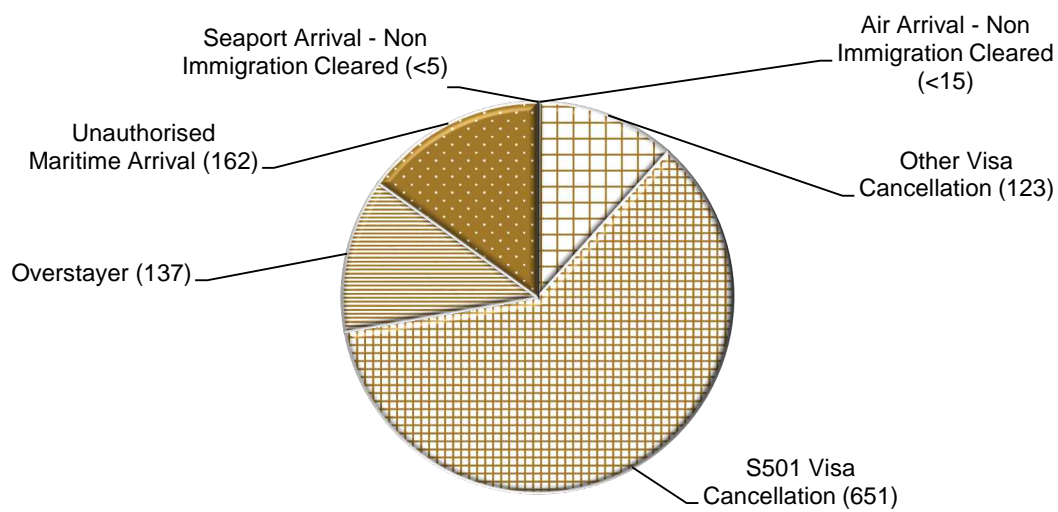


Figure 2 above, shows the number of people in held immigration detention facilities at 31 December 2022 by detention group, including Overstayers, S501 and Other Visa Cancellations, Unauthorised Maritime Arrivals, Unauthorised Air Arrivals, and if applicable – Illegal Foreign Fishers and Others such as stowaways and ship deserters.

Table 4 – People in Held Immigration Detention Facilities by Detention Group at 31 December 2022

Place of immigration detention by State*	S501 Visa Cancellation	UMA	Other Detention Group	Total	Change from 30/11/22
NSW					
Villawood IDC	201	44	112	357	- 86
APODs	<5	0	<5	<5	- <5
VIC					
Melbourne ITA	96	32	65	193	- 13
APODs	0	0	0	0	- <5
QLD					
Brisbane ITA	69	<10	<15	88	- 4
APODs	20	<10	<5	27	+ 4
SA					
Adelaide ITA	<20	<5	<5	24	+ 5
APODs	0	0	0	0	- <5
WA					
Yongah Hill IDC	138	55	54	247	- 31
Perth IDC	11	<10	<5	20	+ 1
APODs	<5	0	<5	<5	- <10
North West Point IDC	96	<15	<25	127	- 20
Christmas Island APODs	0	0	0	0	0
NT					
APODs	0	0	0	0	- 9
Total IDCs	446	114	191	751	- 136
Total APODs	<25	<10	6	33	- 16
Total ITAs	<185	<45	79	305	- 12
Total IDCs/APODs/ITAs	651	162	276	1,089	- 164

* Refer to Important Notice on APODs on page 3.

Table 5 – People in Held Immigration Detention Facilities by Detention Group and Cohort at 31 December 2022

Detention Group	Men	Women	Children	Total	Change from 30/11/22
S501 Visa Cancellation	626	25	0	651	- 140
Unauthorised Maritime Arrival	<165	<5	0	162	- 7
Other	<260	<20	0	276	- 17
Total	1,045	44	0	1,089	- 164

People In Immigration Detention

Nationality

At 31 December 2022, there were 1089 people in held immigration detention facilities. Of these 1089 people, 13.5 per cent were from New Zealand, 9.0 per cent were from Iran, 7.3 per cent were from Vietnam, 5.6 per cent were from India and 5.0 per cent were from Sudan.

Table 6 – People in Held Immigration Detention Facilities by Nationality at 31 December 2022

Nationalities	Men	Women	Children	Total
New Zealand	133	14	0	147
Iran	<100	<5	0	98
Vietnam	69	10	0	79
India	<60	<5	0	61
Sudan	<55	<5	0	54
Iraq	<50	<5	0	46
Tonga	41	0	0	41
United Kingdom	<40	<5	0	38
Afghanistan	37	0	0	37
Stateless ¹	35	0	0	35
Other	441	12	0	453
Total	1,045	44	0	1,089

At 31 December 2022, 538 were people living in the community after being approved for a residence determination. Of these 538 people, 54.1 per cent were from Iran, 10.8 per cent were Stateless, 8.7 per cent were from Somalia, 8.2 per cent were from Sri Lanka and 4.3 per cent were from Iraq.

Table 7 – People in the Community under Residence Determination by Nationality at 31 December 2022

Nationalities	Men	Women	Children	Total
Iran	109	95	87	291
Stateless ²	27	13	18	58
Somalia	16	17	14	47
Sri Lanka	18	10	16	44
Iraq	18	<5	<5	23
Other	46	<15	<20	75
Total	234	150	154	538

^{1,2} The category of "Stateless" nationalities include "claimed stateless" persons.

Children In Immigration Detention

At 31 December 2022 there were no children (aged less than 18 years) in Immigration Residential Housing, Immigration Transit Accommodation and Alternative Places of Detention.

Figure 3 – Children in Immigration Residential Housing, Immigration Transit Accommodation and Alternative Places of Detention

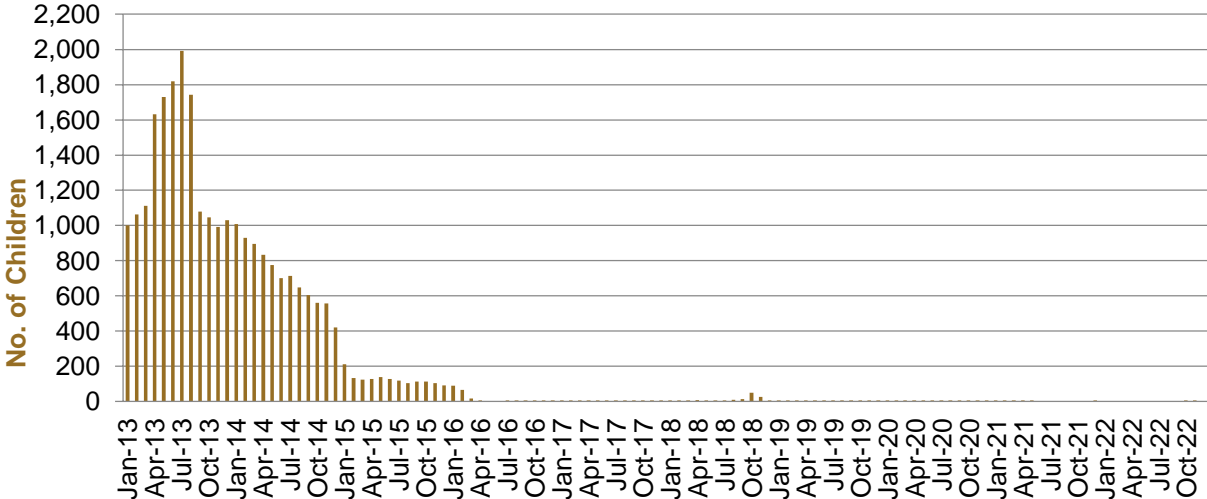


Figure 3 above, shows the number of children in IDFs and APODs from January 2013 to the date of this report. The continuous increase in the number of children in IDFs from April 2013 to Aug 2013 was due to a rapid increase in UMAs during this period. The number of children in IDFs continued to decline during the late 2013 and 2014, with further reduction in January 2015.

At 31 December 2022, the number of children living in the community after being approved for a residence determination has decreased by three to 154 compared with 157 at the end of November 2022.

Figure 4 – Children in the Community under Residence Determination

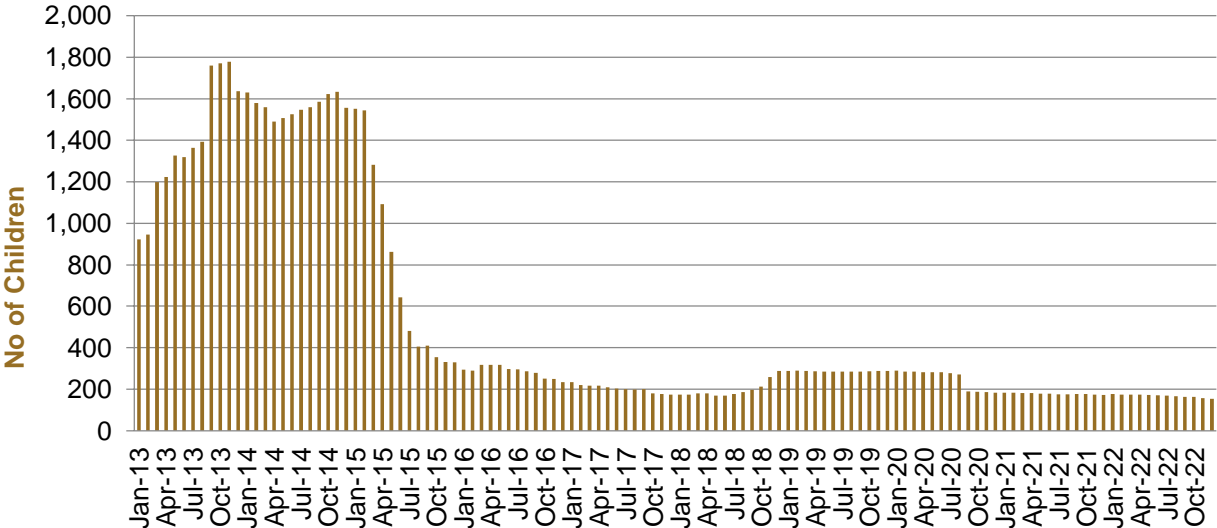


Figure 4 above, shows the number of children in the community under residence determination from January 2013 to the date of this report. The number of children in the community under residence determination, has levelled off at its lowest number since the peak in November 2013, as a result of releases into the community on Bridging E visas.

Table 8 – Children in Immigration Detention and UMA Children in the Community on a Bridging E Visa at 31 December 2022

Placement Type	Children
Immigration Residential Housing	0
Immigration Transit Accommodation	0
Alternative Places of Detention	0
Total Facility	0
Total in the Community under a Residence Determination	154
Total UMAs in the Community on a Bridging E visa (including people with a ceased BVE)	1,342

Time In Immigration Detention Facilities

At 31 December 2022, there were 1089 people in immigration detention facilities.

Of these 1089 people, 17.2 per cent had been detained for 91 days or less and 41.7 per cent had been detained for 365 days or less.

Table 9 – Length of Time of People in Held Immigration Detention Facilities at 31 December 2022

Period Detained	Total	% of Total
7 days or less	13	1.2%
8 days - 31 days	73	6.7%
32 days - 91 days	101	9.3%
92 days - 182 days	130	11.9%
183 days - 365 days	137	12.6%
366 days - 547 days	104	9.6%
548 days - 730 days	103	9.5%
731 days - 1095 days	123	11.3%
1096 days - 1460 days	86	7.9%
1461 days - 1825 days	84	7.7%
Greater than 1825 days	135	12.4%
Total	1,089	100%

At 31 December 2022, the average period of time for people held in detention facilities was 803 days.

Figure 5 – Average Number of Days of People in Held Immigration Detention Facilities only

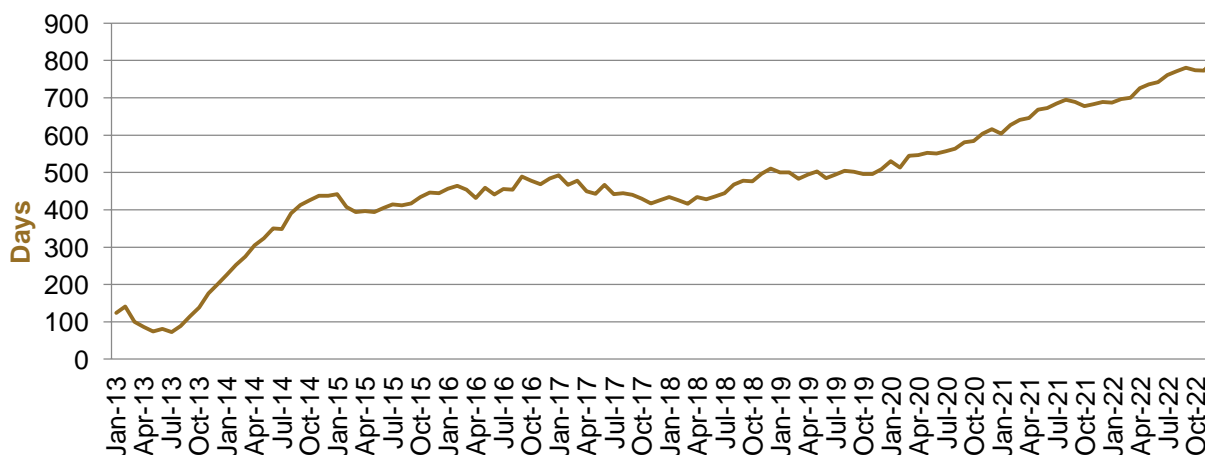


Figure 5 above, shows the average days in held immigration detention at the end of each month from January 2013 to the date of this report. The average period of time for people held in detention facilities steadily increased from July 2013 to January 2015. Between November 2018 and December 2019 the average number of days remained around 500. Since January 2020 the average period of time for people held in detention facilities has steadily increased.

The time an individual spends in immigration detention depends on a range of factors, including the complexity of their case, the legal processes they pursue and whether they voluntarily choose to leave Australia.

Time In Community Under Residence Determination

Of the 538 people in the community under residence determination, as at 31 December 2022, less than three per cent had been in the community for 91 days or less and less than six per cent had been in the community for 365 days or less.

Table 10 – Length of Time of People in Community under Residence Determination at 31 December 2022

Period Detained	Total	% of Total
7 days or less	<5	<1.0%
8 days - 31 days	0	0.0%
32 days - 91 days	7	1.3%
92 days - 182 days	5	0.9%
183 days - 365 days	15	2.8%
366 days - 547 days	41	7.6%
548 days - 730 days	<5	<1.0%
731 days - 1095 days	32	5.9%
1096 days - 1460 days	75	13.9%
1461 days - 1825 days	186	34.6%
Greater than 1825 days	170	31.6%
Total	538	100%