



Australian Government
Department of Home Affairs



Australian
BORDER FORCE

Immigration Detention and Community Statistics Summary

31 December 2021

Table of Contents

- About this report 3**
- Enquiries 3**
- Acronyms 3**
- Important Notice on APODs 3**
- Immigration Detention And Community Statistics Summary 4**
- In Community under Residence Determination Population By State/Territory 5**
- Immigration Detention Population..... 6**
 - From January 1990 to Current..... 6
- People In Immigration Detention Facilities..... 7**
 - Arrival Type..... 7
- People In Immigration Detention 9**
 - Nationality 9
- Children In Immigration Detention 10**
- Time In Immigration Detention Facilities 12**
- Time In Community Under Residence Determination 13**

About this report

This report provides an overview of the number of people in onshore immigration detention as at midnight on the date of the report. The report is produced on a monthly basis.

As data is sourced from several departmental processing and recording systems, data relating to the immigration detention population is dynamic and variations between monthly reports can occur. Due to these issues, data from the current financial year should always be considered provisional.

Further information about immigration detention is available at:

<https://www.homeaffairs.gov.au/research-and-statistics/statistics/visa-statistics/live/immigration-detention>

Enquiries

Comments or enquiries concerning this report should be sent using the Department's client service feedback form quoting the name and date of the report.

See: <https://immi.homeaffairs.gov.au/help-support/contact-us>

Acronyms

Table 1 – Acronyms used in this document

Acronym	Description
APOD	Alternative Place of Detention
IMA	Illegal Maritime Arrival
IDC/F	Immigration Detention Centre/Facility
IRH	Immigration Residential Housing
ITA	Immigration Transit Accommodation
S501	Section 501 of the <i>Migration Act 1958</i> (the Migration Act)
S501 Visa Cancellation	Visa cancellations based on character or related grounds

Important Notice on APODs

From July 2020, detainees residing in APODs are reported under 'APODs' rather than under the ITA or IDC that had responsibility for their management and care. APODs include hospitals, aged-care facilities, mental health inpatient facilities, as well as hotel and apartment style accommodation. The number of individuals in APODs is provided by the State and Territory of the APODs.

Immigration Detention And Community Statistics Summary

At 31 December 2021, there were 1489 people in immigration detention facilities.

Of the 1489 people in immigration detention facilities, 1300 (87.3) per cent have a criminal history.

A further 563 people were living in the community after being approved for residence determination and 11,279 IMAs were living in the community after grant of a Bridging Visa E.

The table below reflects figures based on records in Department of Home Affairs systems.

Table 2 – People in Immigration Detention Centres (IDCs), Alternative Places of Detention (APODs), Immigration Transit Accommodation (ITA) and the Community at 31 December 2021

Place of immigration detention by State*	Men	Women	Children	Total	Change from 30/11/21
NSW					
Villawood IDC	472	32	0	504	+ 12
APODs	17	<5	<5	25	- 14
VIC					
Melbourne ITA	230	9	0	239	- 7
APODs	<45	<5	0	42	- 5
QLD					
Brisbane ITA	97	0	0	97	+ <5
APODs	<30	<5	0	28	+ 5
SA					
Adelaide ITA	24	0	0	24	0
APODs	0	0	0	0	0
WA					
Yongah Hill IDC	283	0	0	283	- 10
Perth IDC	16	12	0	28	+ <5
APODs	<10	<5	0	7	- <5
North West Point IDC	212	0	0	212	- <5
Christmas Island APODs	0	0	0	0	0
NT					
APODs	0	0	0	0	0
Total IDCs	983	44	0	1,027	+ 1
Total APODs	89	<10	<5	102	- 16
Total ITAs	351	9	0	360	- 6
Total IDCs/APODs/ITAs	1,423	<65	<5	1,489	- 21
Total in Community under Residence Determination	227	164	172	563	+ 2
Total IMAs in Community on Bridging Visa E (Including people in a re-grant process)	8,372	1,328	1,579	11,279	- 106

* Refer to Important Notice on APODs on page 3.

In Community under Residence Determination Population By State/Territory

Of the 563 people approved for a residence determination to live in the community, 48.1 per cent were in Victoria, 31.6 per cent in Queensland, 15.3 per cent in New South Wales, 3.2 per cent in South Australia, 1.8 per cent in Western Australia.

Table 3 – People in the Community under Residence Determination by State/Territory at 31 December 2021

State/Territory	Men	Women	Children	Total
New South Wales	33	33	20	86
Victoria	109	78	84	271
Queensland	69	46	63	178
South Australia	<15	<5	<5	18
Western Australia	<5	<5	<5	10
Total	227	164	172	563

Immigration Detention Population

From January 1990 to Current

The overall number of people in immigration detention including in the community under residence determination has decreased by 2 to 2052 compared with 2054 at the end of December 2020. This number takes into account detainees in the community under residence determination and detainees who were held in immigration detention facilities as at 31 December 2021.

Figure 1 – Population in Immigration Detention

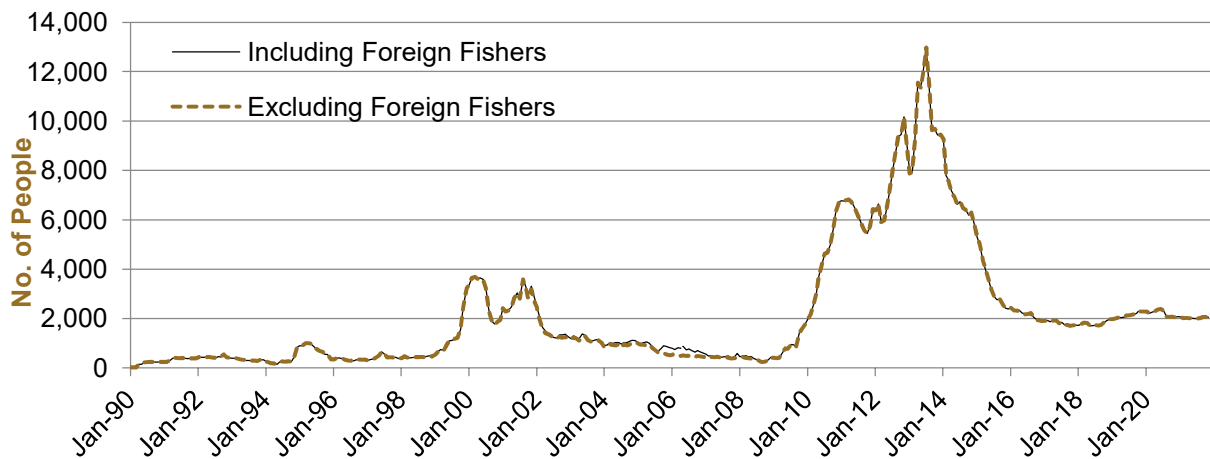


Figure 1 above, shows the number of people in immigration detention from 1990 to 2021.

People In Immigration Detention Facilities

Arrival Type

There were 289 people who arrived unlawfully by air or boat, in held immigration detention facilities at 31 December 2021 representing 19.4 per cent of the total immigration detention population.

There were also 1200 people (80.6 per cent of the total immigration population) who arrived in Australia lawfully and were subsequently taken into immigration detention for either overstaying or having their visas cancelled for breaching visa conditions.

Figure 2 – People in Held Immigration Detention Facilities by Detention Group

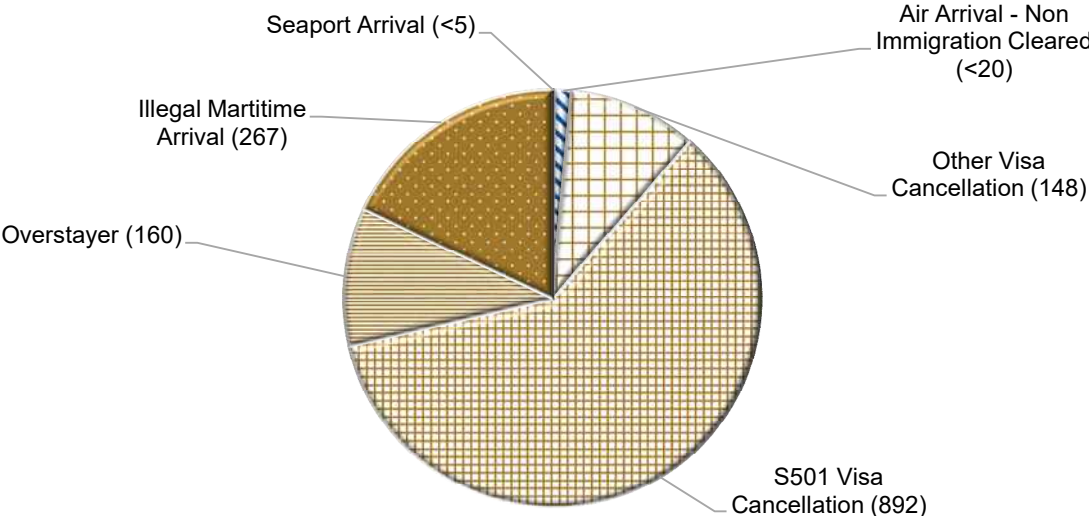


Figure 2 above, shows the number of people in held immigration detention facilities by detention group, including Overstayers, S501 and Other Visa Cancellations, Illegal Maritime Arrivals, Unauthorised Air Arrivals, and if applicable – Illegal Foreign Fishers and Others such as stowaways and ship deserters.

Table 4 – People in Held Immigration Detention Facilities by Detention Group at 31 December 2021

Place of immigration detention by State*	S501 Visa Cancellation	IMA	Other Detention Group	Total	Change from 30/11/21
NSW					
Villawood IDC	333	56	115	504	+ 12
APODs	11	0	14	25	- 14
VIC					
Melbourne ITA	118	49	72	239	- 7
APODs	<5	36	<5	42	- 5
QLD					
Brisbane ITA	65	<25	<15	97	+ <5
APODs	19	<5	<10	28	+ 5
SA					
Adelaide ITA	16	<10	<5	24	0
APODs	0	0	0	0	0
WA					
Yongah Hill IDC	149	77	57	283	- 10
Perth IDC	16	5	7	28	+ <5
APODs	<5	<5	<5	7	- <5
North West Point IDC	162	12	38	212	- <5
Christmas Island APODs	0	0	0	0	0
NT					
APODs	0	0	0	0	0
Total IDCs	660	150	217	1,027	+ 1
Total APODs	33	43	26	102	- 16
Total ITAs	199	74	87	360	- 6
Total IDCs/APODs/ITAs	892	267	330	1,489	- 21

* Refer to Important Notice on APODs on page 3.

Table 5 – People in Held Immigration Detention Facilities by Detention Group and Cohort at 31 December 2021

Detention Group	Men	Women	Children	Total	Change from 30/11/21
S501 Visa Cancellation	853	39	0	892	+ 7
Illegal Maritime Arrival	<265	<5	0	267	- 6
Other	<310	<20	<5	330	- 22
Total	1,423	<65	<5	1,489	- 21

People In Immigration Detention

Nationality

At 31 December 2021, there were 1489 people in held immigration detention facilities. Of these 1489 people, 18.5 per cent were from New Zealand, 9.5 per cent were from Iran, 8.9 per cent were from Vietnam, 4.7 per cent were from Sudan and 4.2 per cent were from India.

Table 6 – People in Held Immigration Detention Facilities by Nationality at 31 December 2021

Nationalities	Men	Women	Children	Total
New Zealand	252	23	0	275
Iran	<145	<5	0	142
Vietnam	118	14	0	132
Sudan	<70	<5	0	70
India	<65	<5	0	63
Iraq	57	0	0	57
Afghanistan	<55	<5	0	53
Sri Lanka	49	0	0	49
United Kingdom	<50	<5	0	47
Stateless	41	0	0	41
Other	541	<20	<5	560
Total	1,423	<65	<5	1,489

At 31 December 2021, 563 were people living in the community after being approved for a residence determination. Of these 563 people, 52.6 per cent were from Iran, 9.8 per cent were from Sri Lanka, 9.8 per cent were Stateless, 9.4 per cent were from Somalia and 2.8 per cent were from Iraq.

Table 7 – People in the Community under Residence Determination by Nationality at 31 December 2021

Nationalities	Men	Women	Children	Total
Iran	101	100	95	296
Sri Lanka	21	11	23	55
Stateless	25	12	18	55
Somalia	19	<20	<20	53
Iraq	13	<5	<5	16
Other	48	21	19	88
Total	227	164	172	563

Children In Immigration Detention

At 31 December 2021 there were less than five children (aged less than 18 years) in Immigration Residential Housing, Immigration Transit Accommodation and Alternative Places of Detention.

Figure 3 – Children in Immigration Residential Housing, Immigration Transit Accommodation and Alternative Places of Detention

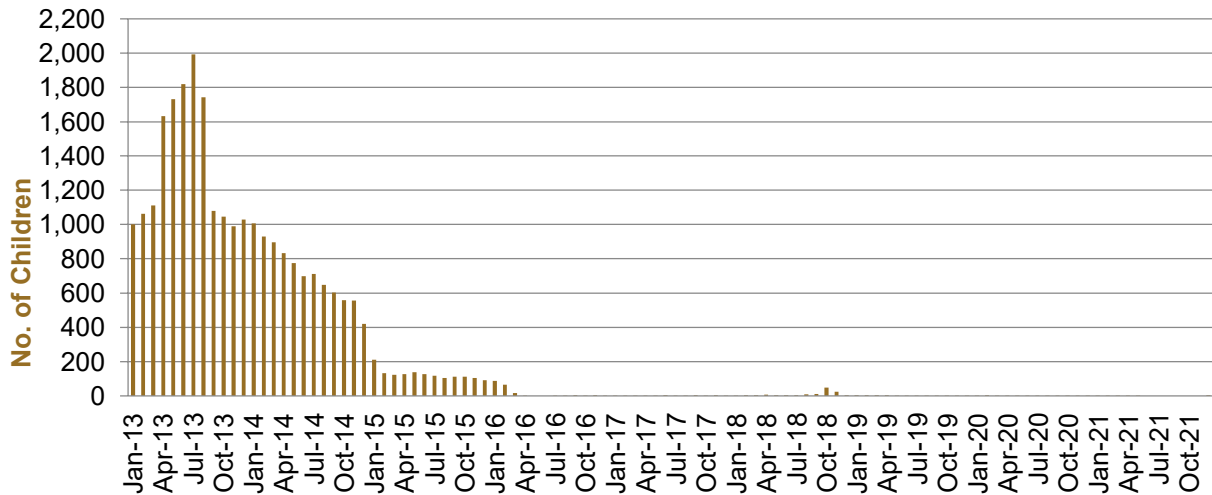


Figure 3 above, shows the number of children in IDFs and APODs from January 2013 to the date of this report. The continuous increase in the number of children in IDFs from April 2013 to Aug 2013 was due to a rapid increase in IMAs during this period. The number of children in IDFs continued to decline during the late 2013 and 2014, with a further reduction in January 2015.

At 31 December 2021, the number of children living in the community after being approved for a residence determination has decreased by 2 to 172 from 174 since the previous report.

Figure 4 – Children in the Community under Residence Determination

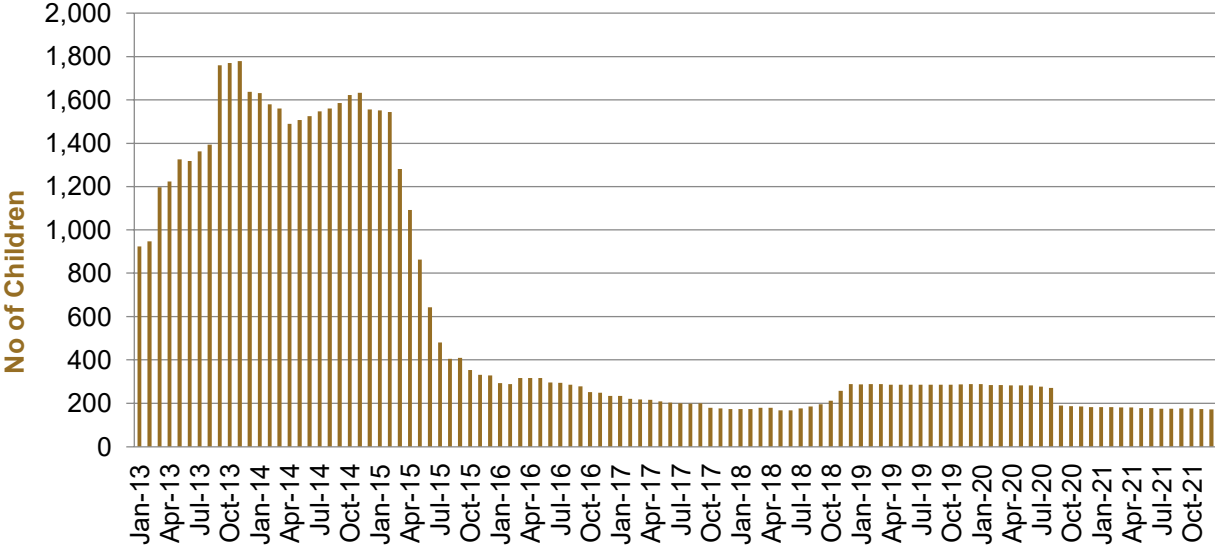


Figure 4 above, shows the number of children in the community under residence determination from January 2013 to the date of this report. The number of children in the community under residence determination, has levelled off at its lowest number since the peak in November 2013, as a result of releases into the community on Bridging E visas.

Table 8 – Children in Immigration Detention and IMA Children in the Community on a Bridging E Visa at 31 December 2021

Placement Type	Children
Immigration Residential Housing	0
Immigration Transit Accommodation	0
Alternative Places of Detention	<5
Total Facility	<5
Total in the Community under a Residence Determination	172
Total IMAs in the Community on a Bridging E visa (including in re-grant process)	1,579

Time In Immigration Detention Facilities

At 31 December 2021, there were 1489 people in immigration detention facilities. Of these 1489 people, 17.9 per cent had been detained for 91 days or less and 47.1 per cent had been detained for 365 days or less.

Table 9 – Length of Time of People in Held Immigration Detention Facilities at 31 December 2021

Period Detained	Total	% of Total
7 days or less	16	1.1%
8 days - 31 days	82	5.5%
32 days - 91 days	169	11.3%
92 days - 182 days	167	11.2%
183 days - 365 days	268	18.0%
366 days - 547 days	151	10.1%
548 days - 730 days	116	7.8%
731 days - 1095 days	186	12.5%
1096 days - 1460 days	129	8.7%
1461 days - 1825 days	86	5.8%
Greater than 1826 days	119	8.0%
Total	1,489	100%

At 31 December 2021, the average period of time for people held in detention facilities was 689 days.

Figure 5 – Average Number of Days of People in Held Immigration Detention Facilities only

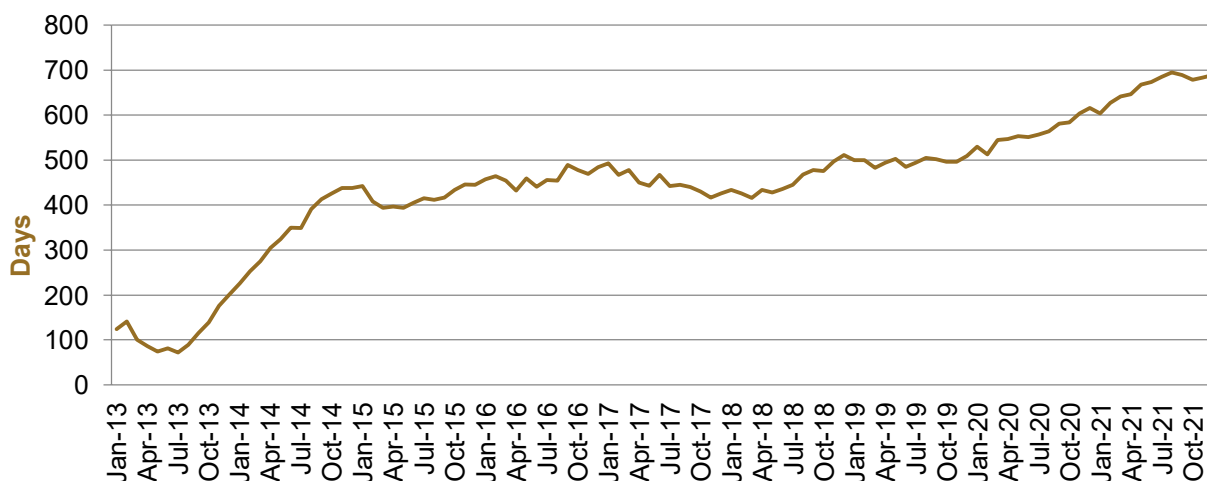


Figure 5 above, shows the average days in held immigration detention at the end of each month from January 2013 to the date of this report. The average period of time for people held in detention facilities steadily increased from July 2013 to January 2015. Between November 2018 and December 2019 the average number of days remained around 500. Since January 2020 the average period of time for people held in detention facilities has steadily increased.

The time an individual spends in immigration detention depends on a range of factors, including the complexity of their case, the legal processes they pursue and whether they voluntarily choose to leave Australia.

Time In Community Under Residence Determination

Of the 563 people in the community under residence determination, as at 31 December 2021, less than one per cent had been in the community for 91 days or less and 8.9 per cent had been in the community for 365 days or less.

Table 10 – Length of Time of People in Community under Residence Determination at 31 December 2021

Period Detained	Total	% of Total
7 days or less	0	0%
8 days - 31 days	<5	<1.0%
32 days - 91 days	<5	<1.0%
92 days - 182 days	42	7.5%
183 days - 365 days	5	0.9%
366 days - 547 days	26	4.6%
548 days - 730 days	6	1.1%
731 days - 1095 days	81	14.4%
1096 days - 1460 days	205	36.4%
1461 days - 1825 days	34	6.0%
Greater than 1826 days	161	28.6%
Total	563	100%