



Australian Government
Department of Home Affairs



Australian
BORDER FORCE

Immigration Detention and Community Statistics Summary

31 December 2017

Table of Contents

About this report.....	3
Enquiries.....	3
Acronyms.....	3
Immigration Detention And Community Statistics Summary.....	4
In Community under Residence Determination Population By State/Territory.....	5
Immigration Detention Population.....	6
From 1990 to 31 December 2017.....	6
People In Immigration Detention Facilities.....	7
Arrival Type.....	7
People In Immigration Detention.....	7
Nationality.....	8
Children In Immigration Detention.....	9
Time In Immigration Detention Facilities.....	11
Time In Community Under Residence Determination.....	12

About this report

This report provides an overview of the number of people in immigration detention and Regional Processing Centres as at midnight on the date of the report. The report is produced on a monthly basis.

Data is sourced from several departmental processing and recording systems. Data relating to the immigration detention population is dynamic and there can be delays in transmission of information from the department's immigration detention network operations. Variations in figures between this report and previous issues can occur. Due to these issues, data from the current financial year should always be considered provisional.

Further information about immigration detention is available at:

<http://www.homeaffairs.gov.au/about/immigration-detention-in-australia>

Enquiries

Comments or enquiries concerning this report should be sent using the department's client service feedback form quoting the name and date of the report.

See: <http://www.homeaffairs.gov.au/about/contact>

Acronyms

Table 1 – Acronyms used in this document

Acronym	Description
APOD	Alternative Place of Detention
IMA	Illegal Maritime Arrival
IDC/F	Immigration Detention Centre/Facility
IRH	Immigration Residential Housing
ITA	Immigration Transit Accommodation
RPC	Regional Processing Centre
S501	Section 501 of the Migration ACT
S501 Visa Cancellation	Visa cancellations based on character or related grounds

Immigration Detention And Community Statistics Summary

At 31 December 2017, there were 1285 people in immigration detention facilities, including 958 in immigration detention on the mainland and 327 in immigration detention on Christmas Island.

A further 448 people were living in the community after being approved for a residence determination and 19,590 were living in the community after grant of a Bridging Visa E.

The table below reflects figures based on records in Department of Immigration and Border Protection systems.

Table 2 – People in Immigration Detention Facilities (IDFs), Alternative Places of Detention (APODs), Regional Processing Centres (RPCs) and the Community at 31 December 2017

Place of immigration detention	Men	Women	Children	Total	Change from Previous Summary 30/11/17
Christmas Island IDC	327	0	0	327	+ 14
Maribyrnong IDC	84	11	0	95	- 2
Perth IDC	21	5	0	26	+ 3
Villawood IDC	418	49	0	467	+ 2
Yongah Hill IDC	216	0	0	216	+ 6
Mainland APODs	<5	<5	0	<5	- 30
Total IDCs/APODs	1,067	66	0	1,133	- 7
Adelaide ITA	22	<5	0	23	+ 4
Brisbane ITA	44	8	<5	54	+ 1
Melbourne ITA	70	<5	<5	75	- 14
Total in ITA	136	13	<5	152	- 9
Total in IDC/F	1,203	79	<5	1,285	- 16
Total in Community under Residence Determination	136	138	174	448	- 6
Total IMA in Community on Bridging Visa E (Including people in a re-grant process)	13,672	2,537	3,381	19,590	- 317
Republic of Nauru (RPC)	264	38	36	338	-1
Manus Province, Papua New Guinea (RPC)	0	0	0	0	0
Total IMA in RPCs	264	38	36	338	-1
Detention Group					
S501 Visa Cancellation	449	20	0	469	- 13
Illegal Maritime Arrival	319	8	<5	329	+ 5
Other	435	51	<5	487	- 8
Total	1,203	79	<5	1,285	- 16

In Community under Residence Determination Population By State/Territory

Of the 448 people approved for a residence determination to live in the community, 37.3 per cent were in Victoria, 26.8 per cent in Queensland, 23.2 per cent in New South Wales, 6.9 per cent in Western Australia and 5.8 per cent in South Australia.

Table 3 – People in the Community under Residence Determination by State/Territory at 31 December 2017

State/Territory	Adult Male	Adult Female	Child Male (<18 years)	Child Female (<18 years)	Total
Victoria	53	49	37	28	167
Queensland	34	33	34	19	120
New South Wales	27	40	22	15	104
Western Australia	15	8	5	<5	31
South Australia	7	8	<5	7	26
Total	136	138	102	72	448

Immigration Detention Population

From 1990 to 31 December 2017

The overall number of people in immigration detention including in the community under residence determination has decreased by 197 to 1733 compared with 1930 at the end of December 2016. This decrease takes into account releases of detainees into the community under residence determination and detainees granted Bridging E visas (BVEs) as well as decreases through return and removal activities.

Figure 1 – Population in Immigration Detention

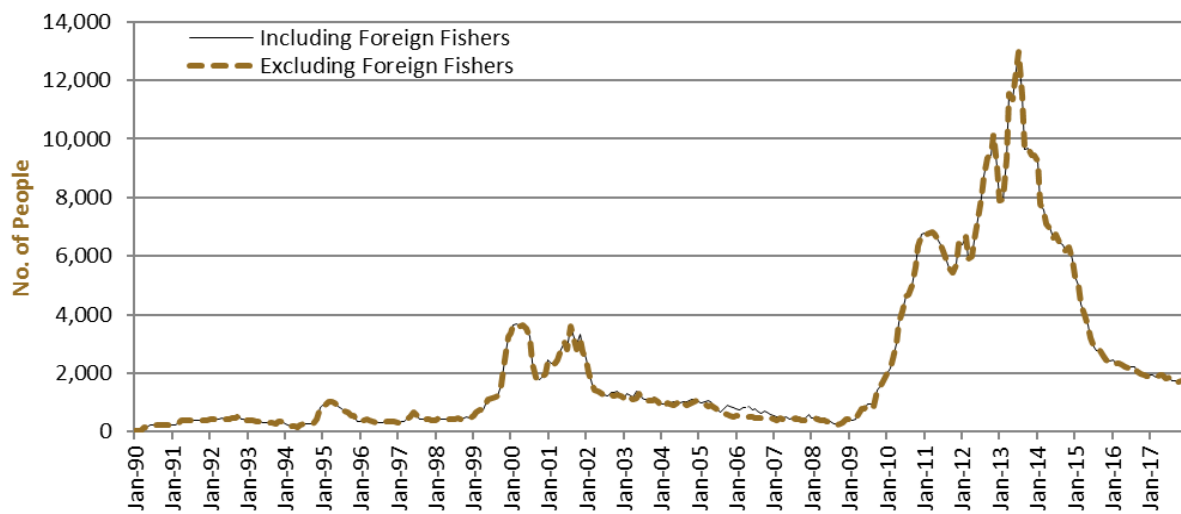


Figure 1 above, shows the number of people in immigration detention from 1990 to the date of this report. The trend had a consistent rise of people in immigration detention from January 2009 to January 2013, but has since had consistent decline.

People In Immigration Detention Facilities

Arrival Type

There were 378 people who arrived unlawfully by air or boat, in held immigration detention facilities at 31 December 2017 representing 29.4 per cent of the total immigration detention population.

There were also 907 people (70.6 per cent of the total immigration population) who arrived in Australia lawfully and were subsequently taken into immigration detention for either overstaying or having their visas cancelled for breaching visa conditions.

Figure 2 – People in Held Immigration Detention Facilities by Detention Group

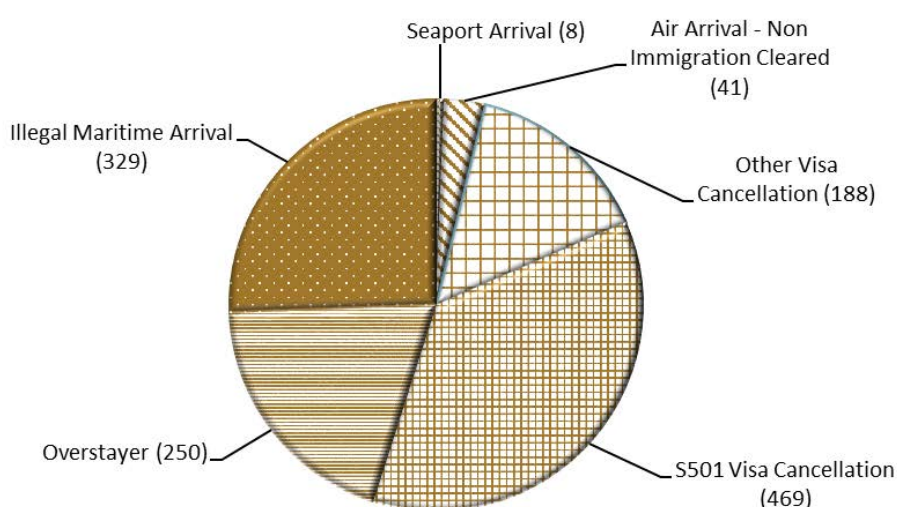


Figure 2 above, shows the number of people in held immigration detention facilities by detention group, including Overstayers, S501 and Other Visa Cancellations, Foreign Fishers, Illegal Maritime Arrivals, Unauthorised Air Arrivals, and if applicable – Inadequately Documented Crew Members and Others such as stowaways and ship deserters.

Place of immigration detention	S501 Visa Cancellation	IMA	Other Detention Group	Total	Change from Previous Summary 30/11/17
Christmas Island IDC	173	87	67	327	+ 14
Maribyrnong IDC	32	8	55	95	- 2
Perth IDC	9	6	11	26	+ 3
Villawood IDC	176	94	197	467	+ 2
Yongah Hill IDC	63	69	84	216	+ 6
Mainland APODs	0	<5	<5	<5	- 30
Total IDCs/APODs	453	265	415	1,133	- 7
Adelaide ITA	<5	9	12	23	+ 4
Brisbane ITA	11	14	29	54	+ 1
Melbourne ITA	<5	41	31	75	- 14
Total in IRH and ITA	16	64	72	152	- 9
Total in IDC/F	469	329	487	1,285	- 16

People In Immigration Detention

Nationality

At 31 December 2017, there were 1285 people in held immigration detention facilities. Of these 1285 people, 12.7 per cent were from New Zealand, 8.2 per cent were from Sri Lanka, 7.9 per cent were from Vietnam, 7.6 per cent were from Iran and 5.1 per cent were from China.

Table 5 – People in Held Immigration Detention Facilities by Nationality at 31 December 2017

Nationalities	Adult Male	Adult Female	Child Male (<18 years)	Child Female (<18 years)	Total
New Zealand	149	14	0	0	163
Sri Lanka	104	<5	0	0	105
Vietnam	92	10	0	0	102
Iran	94	<5	0	<5	98
China	51	15	0	0	66
India	54	0	0	0	54
Pakistan	48	<5	0	0	49
United Kingdom	45	<5	0	0	46
Malaysia	41	<5	0	0	44
Iraq	38	<5	0	0	40
Other	487	30	<5	0	518
Total	1,203	79	<5	<5	1,285

At 31 December 2017, 448 were people living in the community after being approved for a residence determination. Of these 448 people, 53.6 per cent were from Iran, 11.6 per cent were from Stateless, 10.5 per cent were Sri Lanka, 3.6 per cent were from Iraq and 3.1 per cent were from Vietnam.

Table 6 – People in the Community under Residence Determination by Nationality at 31 December 2017

Nationalities	Adult Male	Adult Female	Child Male (<18 years)	Child Female (<18 years)	Total
Iran	73	84	46	37	240
Stateless	17	12	11	12	52
Sri Lanka	13	12	16	6	47
Iraq	8	<5	<5	<5	16
Vietnam	<5	<5	5	<5	14
Other	22	23	23	11	79
Total	136	138	102	72	448

Children In Immigration Detention

At 31 December 2017 there were less than five children (aged less than 18 years) in Immigration Residential Housing, Immigration Transit Accommodation and Alternative Places of Detention.

Figure 3 – Children in Immigration Residential Housing, Immigration Transit Accommodation and Alternative Places of Detention

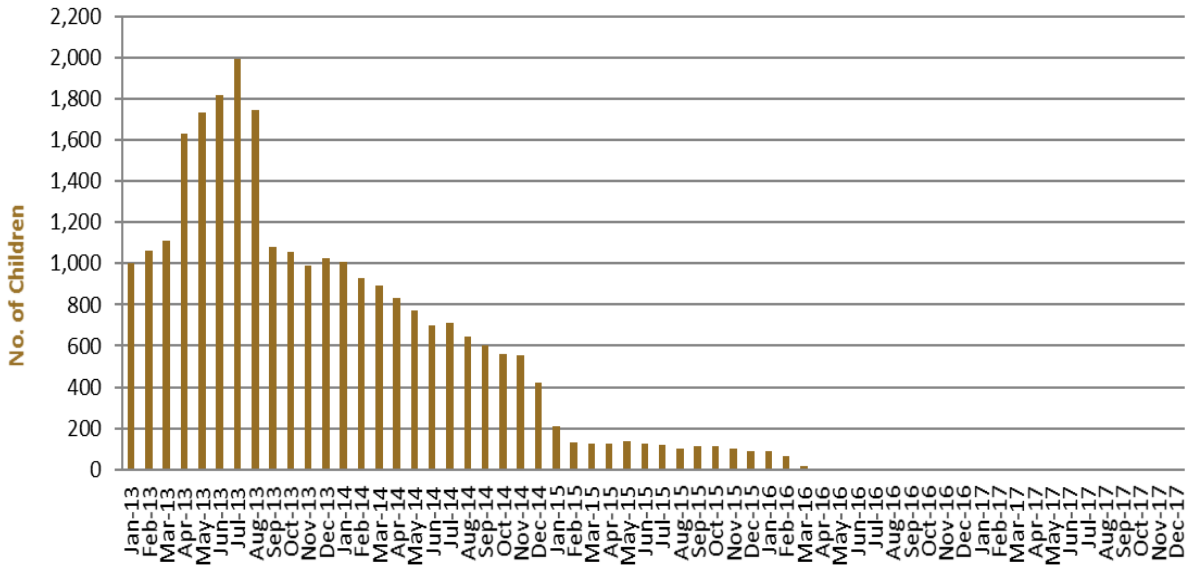


Figure 3 above, shows the number of children in immigration detention facilities and alternative places of detention from January 2013 to the date of this report. The continuous increase in the number of children in detention facilities from April 2013 to August 2013 was due to a rapid increase in illegal maritime arrivals during this period. The number of children in immigration detention facilities reduced in September 2013, as children completed mandatory processing and were transferred into the community. The number of children in detention facilities continued to decline during the late 2013 and 2014, with further reduction in January 2015.

At 31 December 2017, the number of children living in the community after being approved for a residence determination decreased by two to 174 from 176 in the previous report.

Figure 4 – Children in the Community under Residence Determination

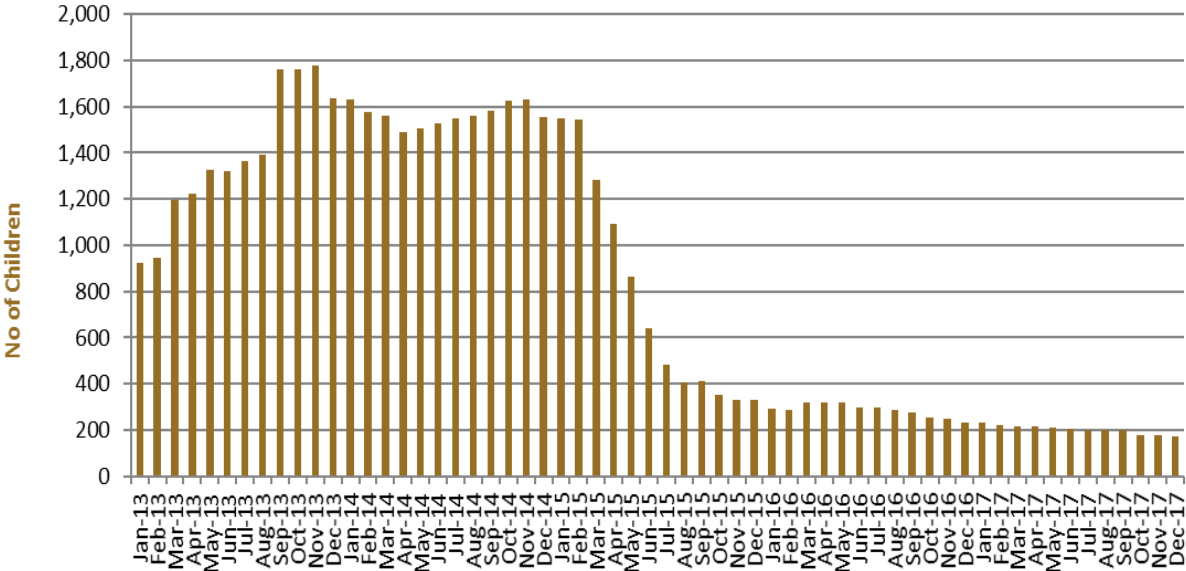


Figure 4 above, shows the number of children in the community under residence determination from January 2012 to the date of this report. The number of children in the community under residence determination, has levelled off at its lowest number since the peak in November 2013, as a result of releases into the community on Bridging E visas.

Table 7 – Children in Immigration Detention and IMA Children in the Community on a Bridging E Visa at 31 December 2017

Placement Type	Children
Immigration Residential Housing	0
Immigration Transit Accommodation	<5
Alternative Places of Detention	0
Total Children in Immigration Detention Facilities	<5
Total Children in the Community under a Residence Determination	174
Total IMA Children in the Community on a Bridging E visa (including in re-grant process)	3,381

Time In Immigration Detention Facilities

At 31 December 2017, there were 1285 people in immigration detention facilities. Of these 1285 people, 37.1 per cent had been detained for 91 days or less and 67.1 per cent had been detained for 365 days or less.

Table 8 – Length of Time of People in Held Immigration Detention Facilities at 31 December 2017

Period Detained	Total	% of Total
7 days or less	48	3.7%
8 days - 31 days	195	15.2%
32 days - 91 days	234	18.2%
92 days - 182 days	182	14.2%
183 days - 365 days	203	15.8%
366 days - 547 days	96	7.5%
548 days - 730 days	70	5.4%
Greater than 730 days	257	20.0%
Total	1,285	100%

At 31 December 2017, the average period of time for people held in detention facilities was 426 days.

Figure 5 – Average Number of Days of People in Held Immigration Detention Facilities only

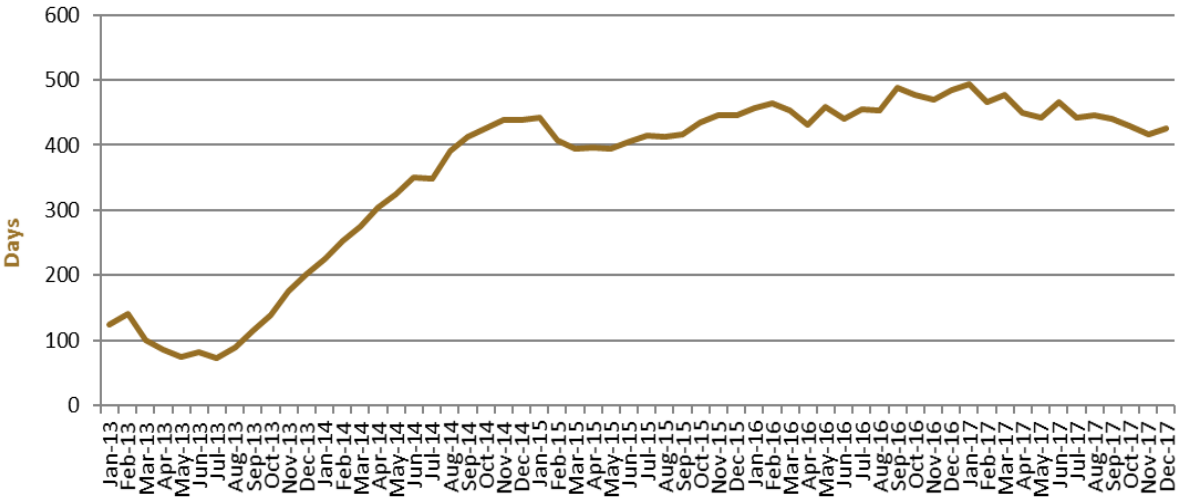


Figure 5 above, shows the average days in held immigration detention at the end of each month from January 2013 to the date of this report. The average period of time for people held in detention facilities steadily increased from July 2013 to January 2015.

Time In Community Under Residence Determination

Of the 448 people in the community under residence determination, as at 31 December 2017, 4.7 per cent had been in the community for 91 days or less and 17.6 per cent had been in the community for 365 days or less.

Table 9 – Length of Time of People in Community under Residence Determination at 31 December 2017

Period Detained	Total	% of Total
7 days or less	<5	0.4%
8 days - 31 days	5	1.1%
32 days - 91 days	14	3.1%
92 days - 182 days	12	2.7%
183 days - 365 days	46	10.3%
366 days - 547 days	34	7.6%
548 days - 730 days	219	48.9%
Greater than 730 days	116	25.9%
Total	448	100%