



Australian Government
Department of Home Affairs



Australian
BORDER FORCE

Immigration Detention and Community Statistics Summary

31 August 2022

Table of Contents

About this report	3
Enquiries	3
Acronyms	3
Important Notice on APODs	3
Immigration Detention and Community Statistics Summary	4
In Community under Residence Determination Population by State/Territory	5
Immigration Detention Population.....	6
From January 1990 to Current.....	6
People In Immigration Detention Facilities.....	7
Arrival Type.....	7
People In Immigration Detention	9
Nationality	9
Children In Immigration Detention	10
Time In Immigration Detention Facilities	12
Time In Community Under Residence Determination	13

About this report

This report provides an overview of the number of people in onshore immigration detention as at midnight on the date of the report. The report is produced on a monthly basis.

As data is sourced from several departmental processing and recording systems, data relating to the immigration detention population is dynamic and variations between monthly reports can occur. Due to these issues, data from the current financial year should always be considered provisional.

Further information about immigration detention is available at:

<https://www.homeaffairs.gov.au/research-and-statistics/statistics/visa-statistics/live/immigration-detention>

Enquiries

Comments or enquiries concerning this report should be sent using the Department's client service feedback form quoting the name and date of the report.

See: <https://immi.homeaffairs.gov.au/help-support/contact-us>

Acronyms

Table 1 – Acronyms used in this document

Acronym	Description
APOD	Alternative Place of Detention
UMA	Unauthorised Maritime Arrival
IDC/F	Immigration Detention Centre/Facility
IRH	Immigration Residential Housing
ITA	Immigration Transit Accommodation
S501	Section 501 of the <i>Migration Act 1958</i> (the Migration Act)
S501 Visa Cancellation	Visa cancellations based on character or related grounds

Important Notice on APODs

From July 2020, detainees residing in APODs are reported under 'APODs' rather than under the ITA or IDC that had responsibility for their management and care. APODs include hospitals, aged-care facilities, mental health inpatient facilities, as well as hotel and apartment style accommodation. The number of individuals in APODs is provided by the State and Territory of the APODs.

Immigration Detention and Community Statistics Summary

At 31 August 2022, there were 1355 people in immigration detention facilities.

Of the 1355 people in immigration detention facilities, 1232 (90.9 per cent) have a criminal history.

A further 553 people were living in the community after being approved for residence determination and 10,834 UMAs were living in the community after grant of a Bridging Visa E.

The table below reflects figures based on records in Department of Home Affairs systems.

Table 2 – People in Immigration Detention Centres (IDCs), Alternative Places of Detention (APODs), Immigration Transit Accommodation (ITA) and the Community at 31 August 2022

Place of immigration detention by State*	Men	Women	Children	Total	Change from 31/07/22
NSW					
Villawood IDC	437	26	0	463	- 36
APODs	51	5	0	56	+ 38
VIC					
Melbourne ITA	204	6	0	210	- 7
APODs	<10	<5	0	<10	+ <5
QLD					
Brisbane ITA	91	0	0	91	+ 13
APODs	25	8	0	33	- 13
SA					
Adelaide ITA	21	0	0	21	- 3
APODs	<5	0	0	<5	0
WA					
Yongah Hill IDC	249	0	0	249	- 6
Perth IDC	15	9	0	24	+ 4
APODs	<15	<5	0	<15	- <5
North West Point IDC	185	0	0	185	- 13
Christmas Island APODs	0	0	0	0	0
NT					
APODs	0	0	0	0	0
Total IDCs	886	35	0	921	- 51
Total APODs	92	20	0	112	+ 24
Total ITAs	316	6	0	322	+ 3
Total IDCs/APODs/ITAs	1,294	61	0	1,355	- 24
Total in Community under Residence Determination	231	156	166	553	- 10
Total UMAs in Community on Bridging Visa E (Including people in a re-grant process)	8,200	1,244	1,390	10,834	- 52

* Refer to Important Notice on APODs on page 3.

In Community under Residence Determination Population by State/Territory

Of the 553 people approved for a residence determination to live in the community, 47.7 per cent were in Victoria, 31.5 per cent in Queensland, 16.1 per cent in New South Wales, 2.9 per cent in South Australia and 1.8 per cent in Western Australia.

Table 3 – People in the Community under Residence Determination by State/Territory at 31 August 2022

State/Territory	Men	Women	Children	Total
New South Wales	35	31	23	89
Victoria	108	77	79	264
Queensland	71	43	60	174
South Australia	11	<5	<5	16
Western Australia	6	<5	<5	10
Total	231	156	166	553

Immigration Detention Population

From January 1990 to Current

The overall number of people in immigration detention including in the community under residence determination has decreased by 92 to 1908 compared with 2000 at the end of August 2021. This number takes into account detainees in the community under residence determination and detainees who were held in immigration detention facilities as at 31 August 2022.

Figure 1 – Population in Immigration Detention

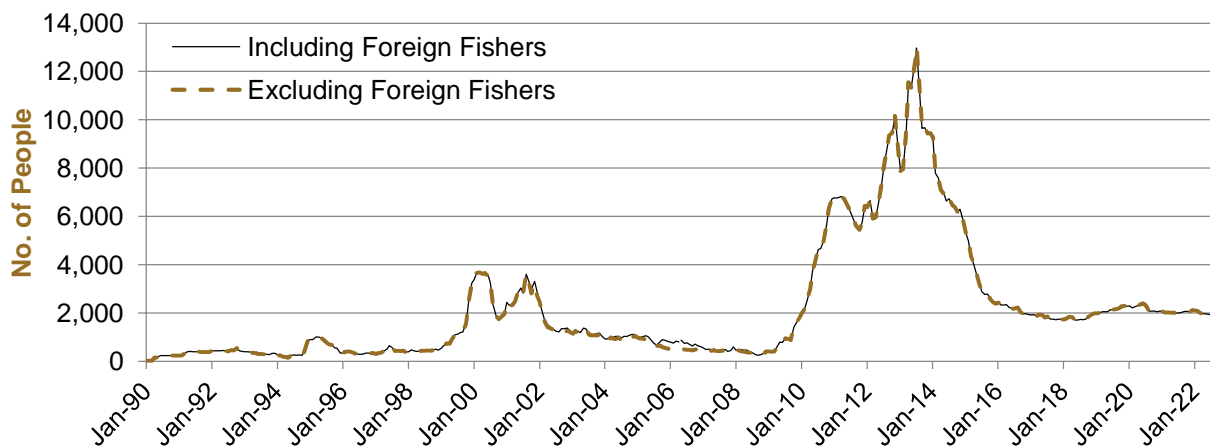


Figure 1 above, shows the number of people in immigration detention from 1990 to 2022.

People In Immigration Detention Facilities

Arrival Type

There were 232 people who arrived unlawfully by air or boat, in held immigration detention facilities at 31 August 2022 representing 17.1 per cent of the total immigration detention population.

There were also 1123 people (82.9 per cent of the total immigration detention population) who arrived in Australia lawfully and were subsequently taken into immigration detention for either overstaying or having their visas cancelled for breaching visa conditions.

Figure 2 – People in Held Immigration Detention Facilities by Detention Group

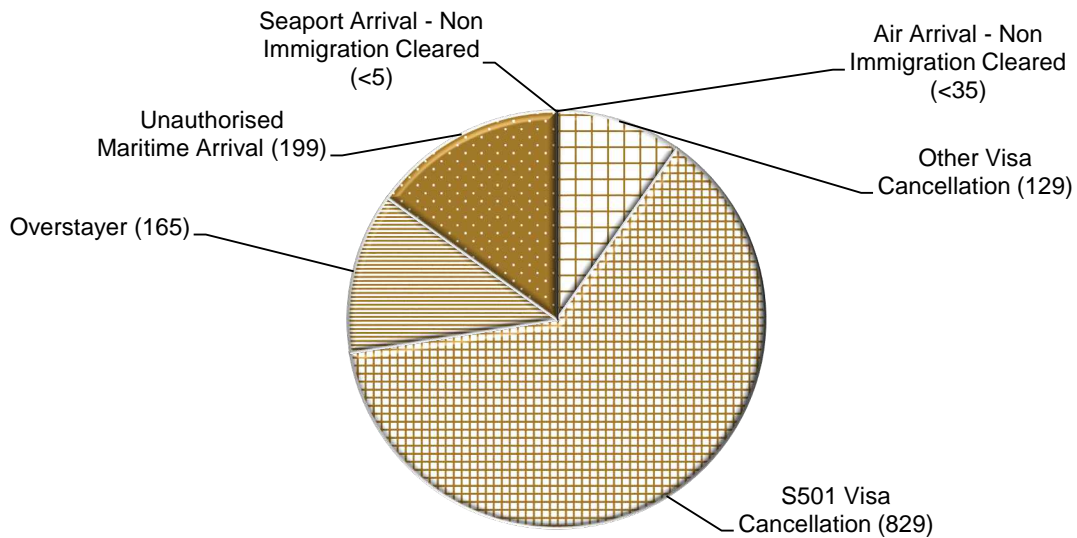


Figure 2 above, shows the number of people in held immigration detention facilities at 31 August 2022 by detention group, including Overstayers, S501 and Other Visa Cancellations, Unauthorised Maritime Arrivals, Unauthorised Air Arrivals, and if applicable – Illegal Foreign Fishers and Others such as stowaways and ship deserters.

Table 4 – People in Held Immigration Detention Facilities by Detention Group at 31 August 2022

Place of immigration detention by State*	S501 Visa Cancellation	UMA	Other Detention Group	Total	Change from 31/07/22
NSW					
Villawood IDC	290	53	120	463	- 36
APODs	25	<5	<30	56	+ 38
VIC					
Melbourne ITA	111	43	56	210	- 7
APODs	0	<5	<10	<10	+ <5
QLD					
Brisbane ITA	71	<10	<15	91	+ 13
APODs	<25	<5	<10	33	- 13
SA					
Adelaide ITA	16	<5	<5	21	- 3
APODs	0	<5	0	<5	0
WA					
Yongah Hill IDC	139	64	46	249	- 6
Perth IDC	12	<5	<10	24	+ 4
APODs	<5	<5	9	<15	- <5
North West Point IDC	138	<20	<35	185	- 13
Christmas Island APODs	0	0	0	0	0
NT					
APODs	0	0	0	0	0
Total IDCs	579	135	207	921	- 51
Total APODs	52	9	51	112	+ 24
Total ITAs	198	55	69	322	+ 3
Total IDCs/APODs/ITAs	829	199	327	1,355	- 24

* Refer to Important Notice on APODs on page 3.

Table 5 – People in Held Immigration Detention Facilities by Detention Group and Cohort at 31 August 2022

Detention Group	Men	Women	Children	Total	Change from 31/07/22
S501 Visa Cancellation	794	35	0	829	- 14
Unauthorised Maritime Arrival	<200	<5	0	199	- 2
Other	<305	<30	0	327	- 8
Total	1,294	61	0	1,355	- 24

People In Immigration Detention

Nationality

At 31 August 2022, there were 1355 people in held immigration detention facilities. Of these 1355 people, 15.6 per cent were from New Zealand, 8.0 per cent were from Iran, 6.1 per cent were from Vietnam, 4.9 per cent were from Sudan and 4.7 per cent were from India.

Table 6 – People in Held Immigration Detention Facilities by Nationality at 31 August 2022

Nationalities	Men	Women	Children	Total
New Zealand	193	18	0	211
Iran	<110	<5	0	108
Vietnam	72	11	0	83
Sudan	<65	<5	0	66
India	<65	<5	0	64
Afghanistan	56	0	0	56
Tonga	52	0	0	52
Iraq	51	0	0	51
United Kingdom	<50	<5	0	51
Sri Lanka	<45	<5	0	44
Other	548	21	0	569
Total	1,294	61	0	1,355

At 31 August 2022, 553 were people living in the community after being approved for a residence determination. Of these 553 people, 52.6 per cent were from Iran, 10.1 per cent were Stateless, 9.0 per cent were from Sri Lanka, 8.5 per cent were from Somalia and 3.8 per cent were from Iraq.

Table 7 – People in the Community under Residence Determination by Nationality at 31 August 2022

Nationalities	Men	Women	Children	Total
Iran	103	95	93	291
Stateless	26	13	17	56
Sri Lanka	20	11	19	50
Somalia	16	17	14	47
Iraq	18	<5	<5	21
Other	48	<20	<25	88
Total	231	156	166	553

Children In Immigration Detention

At 31 August 2022 there were no children (aged less than 18 years) in Immigration Residential Housing, Immigration Transit Accommodation and Alternative Places of Detention.

Figure 3 – Children in Immigration Residential Housing, Immigration Transit Accommodation and Alternative Places of Detention

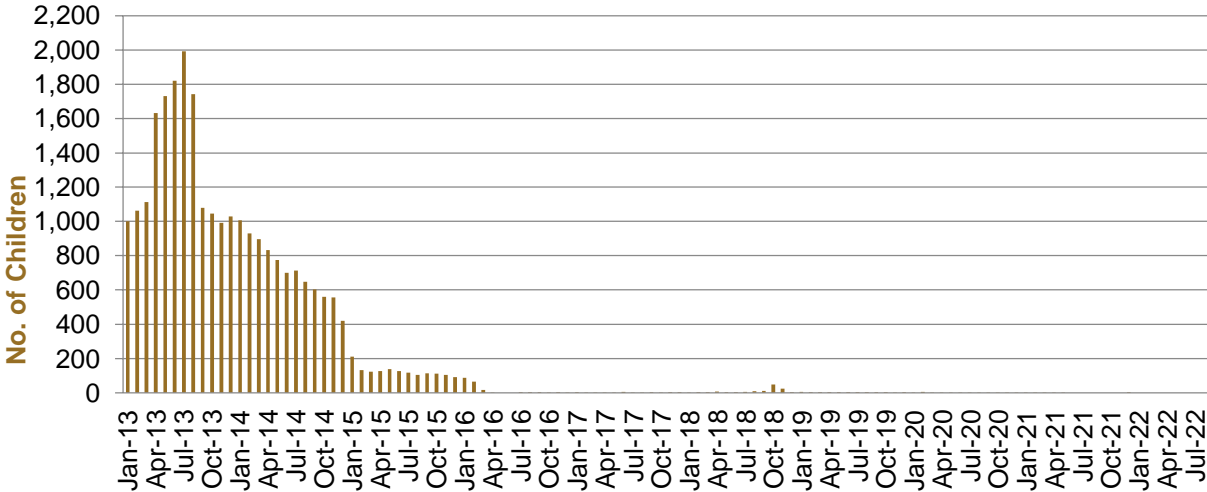


Figure 3 above, shows the number of children in IDFs and APODs from January 2013 to the date of this report. The continuous increase in the number of children in IDFs from April 2013 to Aug 2013 was due to a rapid increase in UMAs during this period. The number of children in IDFs continued to decline during the late 2013 and 2014, with further reduction in January 2015.

At 31 August 2022, the number of children living in the community after being approved for a residence determination has decreased by three to 166 compared with 169 at the end of July 2022.

Figure 4 – Children in the Community under Residence Determination

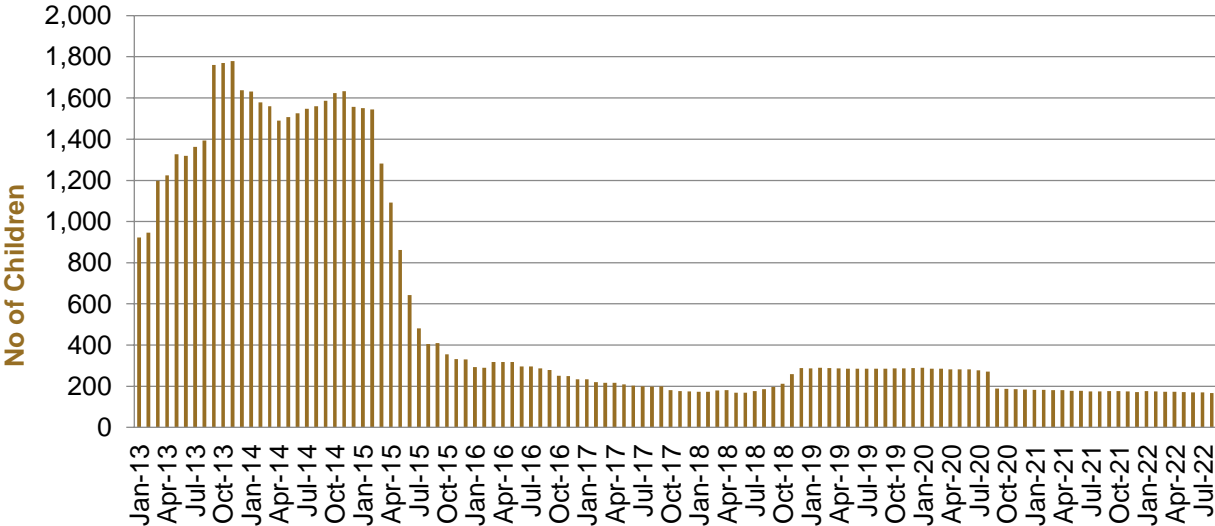


Figure 4 above, shows the number of children in the community under residence determination from January 2013 to the date of this report. The number of children in the community under residence determination, has levelled off at its lowest number since the peak in November 2013, as a result of releases into the community on Bridging E visas.

Table 8 – Children in Immigration Detention and UMA Children in the Community on a Bridging E Visa at 31 August 2022

Placement Type	Children
Immigration Residential Housing	0
Immigration Transit Accommodation	0
Alternative Places of Detention	0
Total Facility	0
Total in the Community under a Residence Determination	166
Total UMAs in the Community on a Bridging E visa (including in re-grant process)	1,390

Time In Immigration Detention Facilities

At 31 August 2022, there were 1355 people in immigration detention facilities.

Of these 1355 people, 16.5 per cent had been detained for 91 days or less and 44.2 per cent had been detained for 365 days or less.

Table 9 – Length of Time of People in Held Immigration Detention Facilities at 31 August 2022

Period Detained	Total	% of Total
7 days or less	30	2.2%
8 days - 31 days	59	4.4%
32 days - 91 days	134	9.9%
92 days - 182 days	156	11.5%
183 days - 365 days	220	16.2%
366 days - 547 days	137	10.1%
548 days - 730 days	111	8.2%
731 days - 1095 days	163	12.0%
1096 days - 1460 days	102	7.5%
1461 days - 1825 days	90	6.6%
Greater than 1825 days	153	11.3%
Total	1,355	100.0%

At 31 August 2022, the average period of time for people held in detention facilities was 771 days.

Figure 5 – Average Number of Days of People in Held Immigration Detention Facilities only

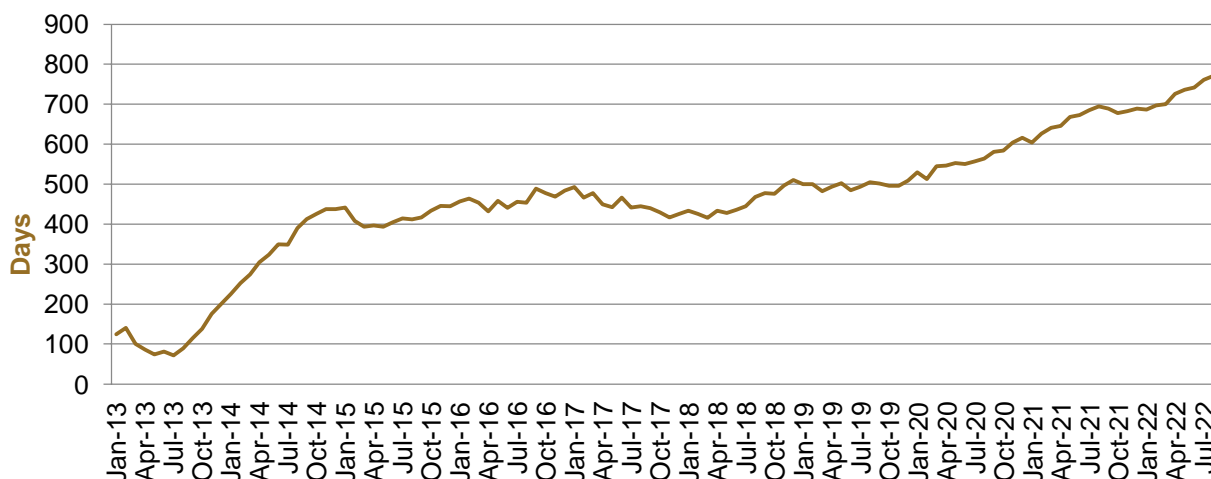


Figure 5 above, shows the average days in held immigration detention at the end of each month from January 2013 to the date of this report. The average period of time for people held in detention facilities steadily increased from July 2013 to January 2015. Between November 2018 and December 2019 the average number of days remained around 500. Since January 2020 the average period of time for people held in detention facilities has steadily increased.

The time an individual spends in immigration detention depends on a range of factors, including the complexity of their case, the legal processes they pursue and whether they voluntarily choose to leave Australia.

Time In Community Under Residence Determination

Of the 553 people in the community under residence determination, as at 31 August 2022, less than one per cent had been in the community for 91 days or less and less than 6 per cent had been in the community for 365 days or less.

Table 10 – Length of Time of People in Community under Residence Determination at 31 August 2022

Period Detained	Total	% of Total
7 days or less	<5	<1.0%
8 days - 31 days	<5	<1.0%
32 days - 91 days	<5	<1.0%
92 days - 182 days	12	2.2%
183 days - 365 days	14	2.5%
366 days - 547 days	37	6.7%
548 days - 730 days	26	4.7%
731 days - 1095 days	27	4.9%
1096 days - 1460 days	197	35.6%
1461 days - 1825 days	61	11.0%
Greater than 1825 days	174	31.5%
Total	553	100.0%