



Australian Government  
Department of Home Affairs



Australian  
**BORDER FORCE**

# Immigration Detention and Community Statistics Summary

31 August 2021

# Table of Contents

- About this report.....3
- Enquiries.....3
- Acronyms.....3
- Important Notice on APODs.....3
- Immigration Detention And Community Statistics Summary..... 3
- In Community under Residence Determination Population By State/Territory.....5
- Immigration Detention Population.....6
  - From 1990 to Current.....6
- People In Immigration Detention Facilities.....7
  - Arrival Type.....7
- People In Immigration Detention.....8
  - Nationality.....9
- Children In Immigration Detention.....9
- Time In Immigration Detention Facilities.....12
- Time In Community Under Residence Determination.....13

## About this report

This report provides an overview of the number of people in onshore immigration detention as at midnight on the date of the report. The report is produced on a monthly basis.

As data is sourced from several departmental processing and recording systems, data relating to the immigration detention population is dynamic and variations between monthly reports can occur. Due to these issues, data from the current financial year should always be considered provisional.

Further information about immigration detention is available at:

<https://www.homeaffairs.gov.au/research-and-statistics/statistics/visa-statistics/live/immigration-detention>

## Enquiries

Comments or enquiries concerning this report should be sent using the Department's client service feedback form quoting the name and date of the report.

See: <https://immi.homeaffairs.gov.au/help-support/contact-us>

## Acronyms

**Table 1 – Acronyms used in this document**

Acronym	Description
APOD	Alternative Place of Detention
IMA	Illegal Maritime Arrival
IDC/F	Immigration Detention Centre/Facility
IRH	Immigration Residential Housing
ITA	Immigration Transit Accommodation
S501	Section 501 of the <i>Migration Act 1958</i> (the Migration Act)
S501 Visa Cancellation	Visa cancellations based on character or related grounds

## Important Notice on APODs

From July 2020, detainees residing in APODs are reported under 'APODs' rather than under the ITA or IDC that had responsibility for their management and care. APODs include hospitals, aged-care facilities, mental health inpatient facilities, as well as hotel and apartment style accommodation. The number of individuals in APODs is provided by the State and Territory of the APODs.

# Immigration Detention And Community Statistics Summary

At 31 August 2021, there were 1440 people in immigration detention facilities.

Of the 1440 people in immigration detention facilities, 1245 (86.5%) have a criminal history.

A further 560 people were living in the community after being approved for residence determination and 11,630 IMAs were living in the community after grant of a Bridging Visa E.

The table below reflects figures based on records in Department of Home Affairs systems.

**Table 2 – People in Immigration Detention Centres (IDCs), Alternative Places of Detention (APODs), Immigration Transit Accommodation (ITA) and the Community at 31 August 2021**

Place of immigration detention by State*	Men	Women	Children	Total	Change from 31/07/21
<b>NSW</b>					
Villawood IDC	400	25	0	<b>425</b>	- 54
APODs	<40	<5	0	<b>38</b>	+ 8
<b>VIC</b>					
Melbourne ITA	221	8	0	<b>229</b>	- 3
APODs	46	0	0	<b>46</b>	- 5
<b>QLD</b>					
Brisbane ITA	92	0	0	<b>92</b>	- 9
APODs	<25	<5	0	<b>24</b>	+ 9
<b>SA</b>					
Adelaide ITA	23	0	0	<b>23</b>	- 1
APODs	0	<5	0	<b>&lt;5</b>	+ <5
<b>WA</b>					
Yongah Hill IDC	318	0	0	<b>318</b>	+ 17
Perth IDC	13	7	0	<b>20</b>	- 4
APODs	<5	<5	0	<b>&lt;10</b>	- <5
North West Point IDC	219	0	0	<b>219</b>	+ 11
Christmas Island APODs	0	0	0	<b>0</b>	0
<b>NT</b>					
APODs	0	0	0	<b>0</b>	- <10
<b>Total IDCs</b>	<b>950</b>	<b>32</b>	<b>0</b>	<b>982</b>	<b>- 30</b>
<b>Total APODs</b>	<b>107</b>	<b>7</b>	<b>0</b>	<b>114</b>	<b>+ 2</b>
<b>Total ITAs</b>	<b>336</b>	<b>8</b>	<b>0</b>	<b>344</b>	<b>- 13</b>
<b>Total IDCs/APODs/ITAs</b>	<b>1,393</b>	<b>47</b>	<b>0</b>	<b>1,440</b>	<b>- 41</b>
<b>Total in Community under Residence Determination</b>	<b>223</b>	<b>162</b>	<b>175</b>	<b>560</b>	<b>+ 41</b>
<b>Total IMAs in Community on Bridging Visa E (Including people in a re-grant process)</b>	<b>8,608</b>	<b>1,369</b>	<b>1,653</b>	<b>11,630</b>	<b>- 136</b>

\* Refer to Important Notice on APODs on page 3.

## In Community under Residence Determination Population By State/Territory

Of the 560 people approved for a residence determination to live in the community, 50.4 per cent were in Victoria, 30.7 per cent in Queensland, 15.0 per cent in New South Wales, 2.1 per cent in South Australia, 1.8 per cent in Western Australia.

**Table 3 – People in the Community under Residence Determination by State/Territory at 31 August 2021**

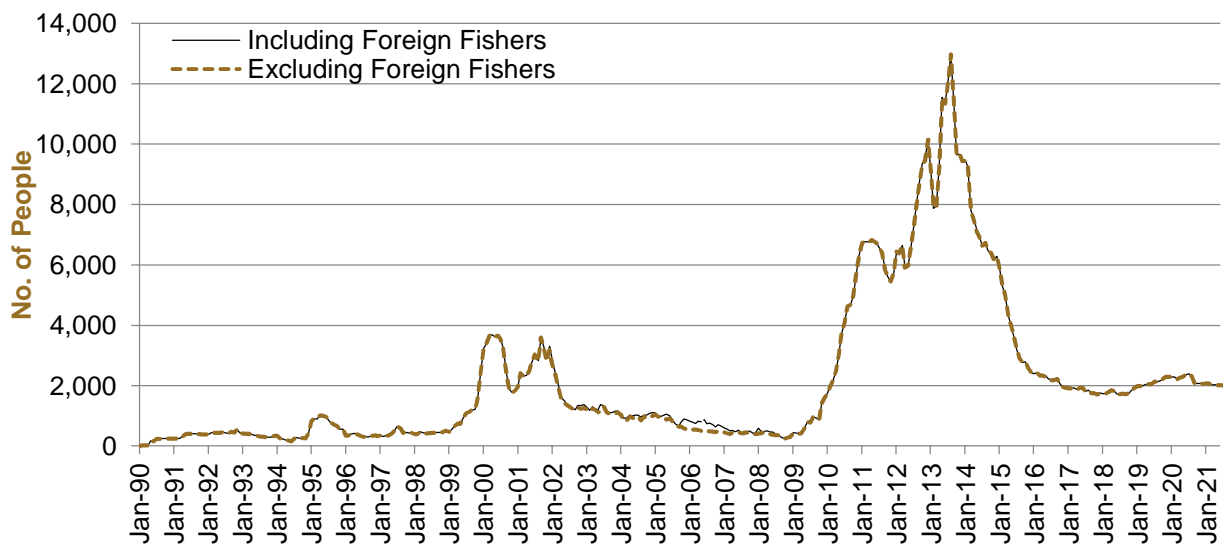
State/Territory	Men	Women	Children	Total
New South Wales	32	32	20	<b>84</b>
Victoria	118	79	85	<b>282</b>
Queensland	63	44	65	<b>172</b>
South Australia	<10	<5	<5	<b>12</b>
Western Australia	<5	<5	<5	<b>10</b>
<b>Total</b>	<b>223</b>	<b>162</b>	<b>175</b>	<b>560</b>

# Immigration Detention Population

## From January 1990 to Current

The overall number of people in immigration detention including in the community under residence determination has decreased by 310 to 2000 compared with 2310 at the end of August 2020. This number takes into account detainees in the community under residence determination and detainees who were held in immigration detention facilities as at 31 August 2021.

**Figure 1 – Population in Immigration Detention**



**Figure 1** above, shows the number of people in immigration detention from 1990 to 2021.

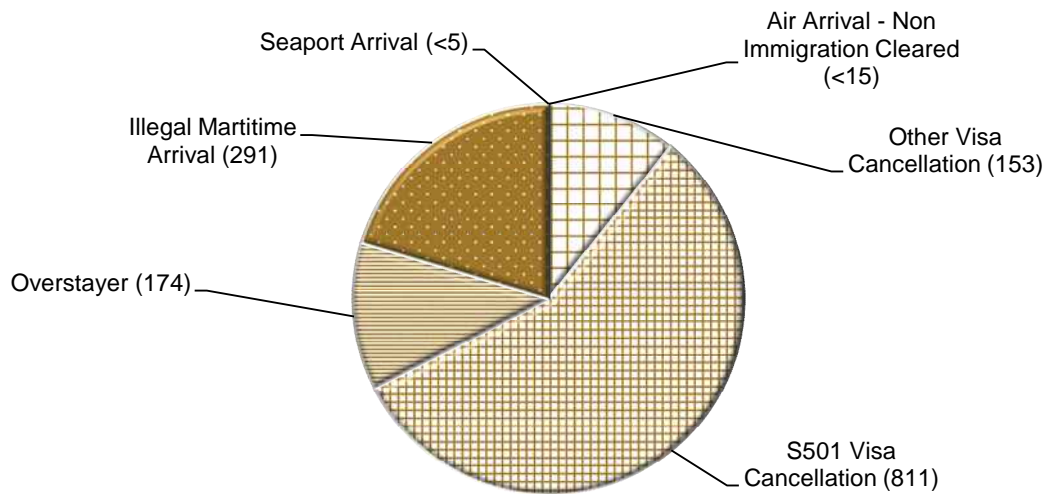
# People In Immigration Detention Facilities

## Arrival Type

There were 302 people who arrived unlawfully by air or boat, in held immigration detention facilities at 31 August 2021 representing 21.0 per cent of the total immigration detention population.

There were also 1138 people (79.0 per cent of the total immigration population) who arrived in Australia lawfully and were subsequently taken into immigration detention for either overstaying or having their visas cancelled for breaching visa conditions.

**Figure 2 – People in Held Immigration Detention Facilities by Detention Group**



**Figure 2** above, shows the number of people in held immigration detention facilities by detention group, including Overstayers, S501 and Other Visa Cancellations, Illegal Maritime Arrivals, Unauthorised Air Arrivals, and if applicable – Illegal Foreign Fishers and Others such as stowaways and ship deserters.

**Table 4 – People in Held Immigration Detention Facilities by Detention Group at 31 August 2021**

Place of immigration detention by State*	S501 Visa Cancellation	IMA	Other Detention Group	Total	Change from 31/07/21
<b>NSW</b>					
Villawood IDC	262	52	111	<b>425</b>	- 54
APODs	<20	<5	20	<b>38</b>	+ 8
<b>VIC</b>					
Melbourne ITA	105	50	74	<b>229</b>	- 3
APODs	<5	44	<5	<b>46</b>	- 5
<b>QLD</b>					
Brisbane ITA	58	27	7	<b>92</b>	- 9
APODs	<25	0	<5	<b>24</b>	+ 9
<b>SA</b>					
Adelaide ITA	14	<10	<5	<b>23</b>	- 1
APODs	0	0	<5	<b>&lt;5</b>	+ <5
<b>WA</b>					
Yongah Hill IDC	163	87	68	<b>318</b>	+ 17
Perth IDC	10	5	5	<b>20</b>	- 4
APODs	<5	<5	<5	<b>&lt;10</b>	- <5
North West Point IDC	162	14	43	<b>219</b>	+ 11
Christmas Island APODs	0	0	0	<b>0</b>	0
<b>NT</b>					
APODs	0	0	0	<b>0</b>	- <10
<b>Total IDCs</b>	<b>597</b>	<b>158</b>	<b>227</b>	<b>982</b>	<b>- 30</b>
<b>Total APODs</b>	<b>37</b>	<b>49</b>	<b>28</b>	<b>114</b>	<b>+ 2</b>
<b>Total ITAs</b>	<b>177</b>	<b>84</b>	<b>83</b>	<b>344</b>	<b>- 13</b>
<b>Total IDCs/APODs/ITAs</b>	<b>811</b>	<b>291</b>	<b>338</b>	<b>1,440</b>	<b>- 41</b>

\* Refer to Important Notice on APODs on page 3.

**Table 5 – People in Held Immigration Detention Facilities by Detention Group and Cohort at 31 August 2021**

Detention Group	Men	Women	Children	Total	Change from 31/07/21
S501 Visa Cancellation	783	28	0	<b>811</b>	+ 12
Illegal Maritime Arrival	286	5	0	<b>291</b>	- 45
Other	324	14	0	<b>338</b>	- 8
<b>Total</b>	<b>1,393</b>	<b>47</b>	<b>0</b>	<b>1,440</b>	<b>- 41</b>



# People In Immigration Detention

## Nationality

At 31 August 2021, there were 1440 people in held immigration detention facilities. Of these 1440 people, 14.3 per cent were from New Zealand, 9.8 per cent were from Iran, 9.0 per cent were from Vietnam, 4.4 per cent were from Sudan and 4.2 per cent were from India.

**Table 6 – People in Held Immigration Detention Facilities by Nationality at 31 August 2021**

Nationalities	Men	Women	Children	Total
New Zealand	186	20	0	<b>206</b>
Iran	<140	<5	0	<b>141</b>
Vietnam	121	8	0	<b>129</b>
Sudan	<65	<5	0	<b>64</b>
India	<65	<5	0	<b>61</b>
Sri Lanka	60	0	0	<b>60</b>
Iraq	59	0	0	<b>59</b>
United Kingdom	<55	<5	0	<b>54</b>
Afghanistan	51	0	0	<b>51</b>
Fiji	<45	<5	0	<b>42</b>
Other	562	11	0	<b>573</b>
<b>Total</b>	<b>1,393</b>	<b>47</b>	<b>0</b>	<b>1,440</b>

At 31 August 2021, 560 were people living in the community after being approved for a residence determination. Of these 560 people, 52.9 per cent were from Iran, 10.0 per cent were Stateless, 9.6 per cent were from Sri Lanka, 9.5 per cent were from Somalia and 2.9 per cent were from Iraq.

**Table 7 – People in the Community under Residence Determination by Nationality at 31 August 2021**

Nationalities	Men	Women	Children	Total
Iran	100	100	96	<b>296</b>
Stateless	26	11	19	<b>56</b>
Sri Lanka	20	11	23	<b>54</b>
Somalia	19	18	16	<b>53</b>
Iraq	13	<5	<5	<b>16</b>
Other	45	<25	<25	<b>85</b>
<b>Total</b>	<b>223</b>	<b>162</b>	<b>175</b>	<b>560</b>

# Children In Immigration Detention

At 31 August 2021 there were no children (aged less than 18 years) in Immigration Residential Housing, Immigration Transit Accommodation and Alternative Places of Detention.

**Figure 3 – Children in Immigration Residential Housing, Immigration Transit Accommodation and Alternative Places of Detention**

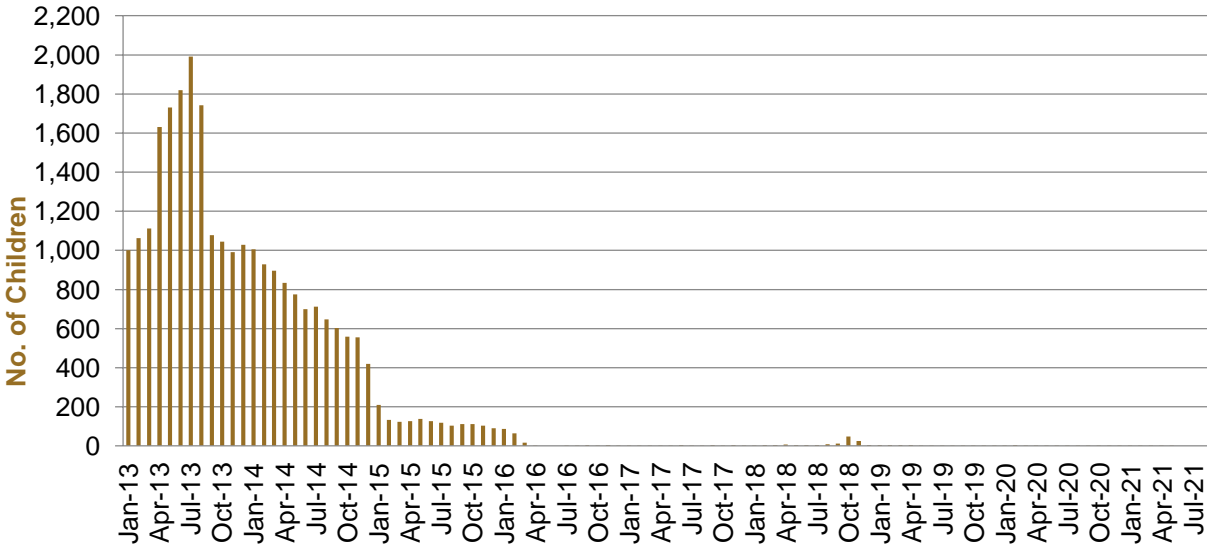


Figure 3 above, shows the number of children in IDFs and APODs from January 2013 to the date of this report. The continuous increase in the number of children in IDFs from April 2013 to Aug 2013 was due to a rapid increase in IMAs during this period. The number of children in IDFs continued to decline during the late 2013 and 2014, with further reduction in January 2015.

At 31 August 2021, the number of children living in the community after being approved for a residence determination has remained the same since the previous report at 175.

**Figure 4 – Children in the Community under Residence Determination**

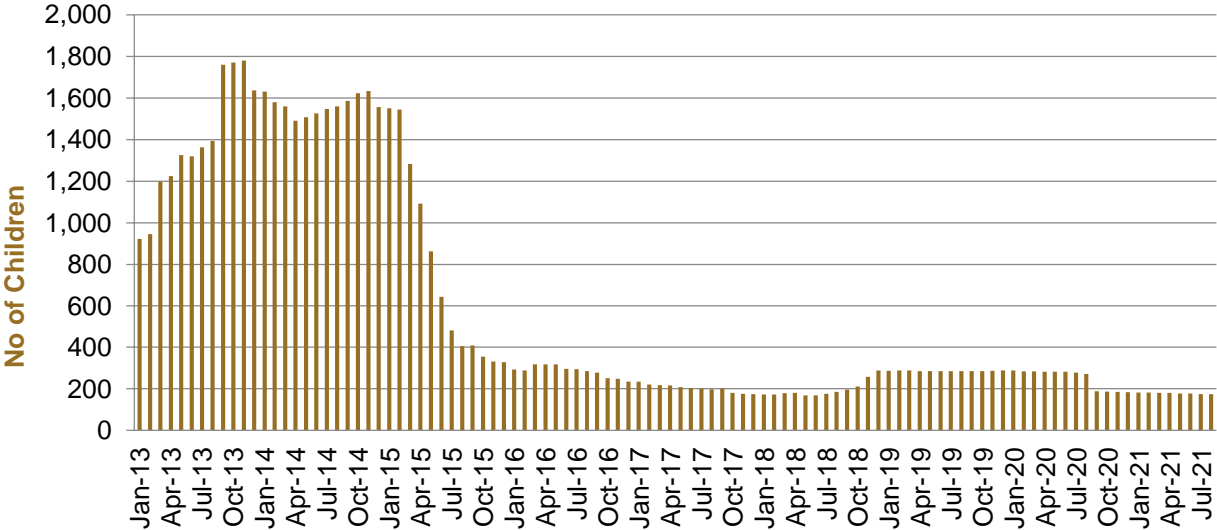


Figure 4 above, shows the number of children in the community under residence determination from January 2013 to the date of this report. The number of children in the community under residence determination, has levelled off at its lowest number since the peak in November 2013, as a result of releases into the community on Bridging E visas.

**Table 8 – Children in Immigration Detention and IMA Children in the Community on a Bridging E Visa at 31 August 2021**

Placement Type	Children
Immigration Residential Housing	0
Immigration Transit Accommodation	0
Alternative Places of Detention	0
<b>Total Facility</b>	<b>0</b>
<b>Total in the Community under a Residence Determination</b>	<b>175</b>
<b>Total IMAs in the Community on a Bridging E visa (including in re-grant process)</b>	<b>1,653</b>

# Time In Immigration Detention Facilities

At 31 August 2021, there were 1440 people in immigration detention facilities.

Of these 1440 people, 16.1 per cent had been detained for 91 days or less and 44.6 per cent had been detained for 365 days or less.

**Table 9 – Length of Time of People in Held Immigration Detention Facilities at 31 August 2021**

Period Detained	Total	% of Total
7 days or less	19	1.3%
8 days - 31 days	59	4.1%
32 days - 91 days	154	10.7%
92 days - 182 days	176	12.2%
183 days - 365 days	234	16.3%
366 days - 547 days	144	10.0%
548 days - 730 days	149	10.3%
731 days - 1095 days	189	13.1%
1096 days - 1460 days	127	8.8%
1461 days - 1825 days	72	5.0%
Greater than 1825 days	117	8.1%
<b>Total</b>	<b>1,440</b>	<b>100%</b>

At 31 August 2021, the average period of time for people held in detention facilities was 696 days.

**Figure 5 – Average Number of Days of People in Held Immigration Detention Facilities only**

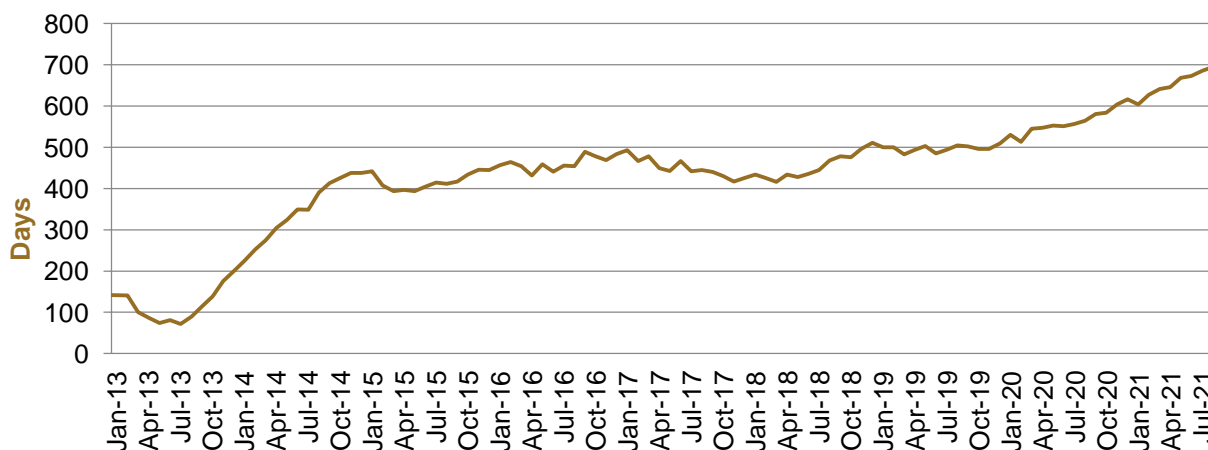


Figure 5 above, shows the average days in held immigration detention at the end of each month from January 2013 to the date of this report. The average period of time for people held in detention facilities steadily increased from July 2013 to January 2015. Between November 2018 and December 2019 the average number of days remained around 500. Since January 2020 the average period of time for people held in detention facilities has steadily increased.

The time an individual spends in immigration detention depends on a range of factors, including the complexity of their case, the legal processes they pursue and whether they voluntarily choose to leave Australia.

## Time In Community Under Residence Determination

Of the 560 people in the community under residence determination, as at 31 August 2021, 7.5 per cent had been in the community for 91 days or less and 13.0 per cent had been in the community for 365 days or less.

**Table 10 – Length of Time of People in Community under Residence Determination at 31 August 2021**

Period Detained	Total	% of Total
7 days or less	<5	<1.0%
8 days - 31 days	38	6.8%
32 days - 91 days	<5	<1.0%
92 days - 182 days	<5	<1.0%
183 days - 365 days	29	5.2%
366 days - 547 days	<5	<1.0%
548 days - 730 days	24	4.3%
731 days - 1095 days	211	37.7%
1096 days - 1460 days	64	11.4%
1461 days - 1825 days	45	8.0%
Greater than 1825 days	140	25.0%
<b>Total</b>	<b>560</b>	<b>100%</b>