



Australian Government
Department of Home Affairs



Australian
BORDER FORCE

Immigration Detention and Community Statistics Summary

31 August 2020

Table of Contents

About this report.....	3
Enquiries.....	3
Acronyms.....	3
Important Notice on APODs.....	3
Immigration Detention And Community Statistics Summary.....	3
In Community under Residence Determination Population By State/Territory.....	5
Immigration Detention Population.....	6
From 1990 to Current.....	6
People In Immigration Detention Facilities.....	7
Arrival Type.....	7
People In Immigration Detention.....	8
Nationality.....	9
Children In Immigration Detention.....	9
Time In Immigration Detention Facilities.....	12
Time In Community Under Residence Determination.....	13

About this report

This report provides an overview of the number of people in onshore immigration detention as at midnight on the date of the report. The report is produced on a monthly basis.

As data is sourced from several departmental processing and recording systems, data relating to the immigration detention population is dynamic and variations between monthly reports can occur. Due to these issues, data from the current financial year should always be considered provisional.

Further information about immigration detention is available at:

<https://www.homeaffairs.gov.au/research-and-statistics/statistics/visa-statistics/live/immigration-detention>

Enquiries

Comments or enquiries concerning this report should be sent using the Department's client service feedback form quoting the name and date of the report.

See: <https://immi.homeaffairs.gov.au/help-support/contact-us>

Acronyms

Table 1 – Acronyms used in this document

Acronym	Description
APOD	Alternative Place of Detention
IMA	Illegal Maritime Arrival
IDC/F	Immigration Detention Centre/Facility
IRH	Immigration Residential Housing
ITA	Immigration Transit Accommodation
S501	Section 501 of the <i>Migration Act 1958</i> (the Migration Act)
S501 Visa Cancellation	Visa cancellations based on character or related grounds

Important Notice on APODs

From July 2020, detainees residing in APODs will be reported under 'APODs' rather than under the ITA or IDC that had responsibility for their management and care. APODs include hospitals, aged-care facilities, mental health inpatient facilities, as well as hotel and apartment style accommodation. The number of individuals in APODs is provided by the State and Territory of the APODs.

Immigration Detention And Community Statistics Summary

At 31 August 2020, there were 1545 people in immigration detention facilities, including 1467 in immigration detention on the mainland and 78 in immigration detention on Christmas Island.

Of the 1545 people in immigration detention facilities, 1098 (71.1%) have a criminal history.

A further 765 people were living in the community after being approved for a residence determination and 12,404 IMAs were living in the community after grant of a Bridging E Visa.

The table below reflects figures based on records in Department of Home Affairs systems.

Table 2 – People in Immigration Detention Centres (IDCs), Alternative Places of Detention (APODs), Immigration Transit Accommodation (ITA) and the Community at 31 August 2020

Place of immigration detention by State*	Men	Women	Children	Total	Change from 31/07/20
NSW					
Villawood IDC	433	22	0	455	- 66
APODs	<5	0	0	<5	+ 2
VIC					
Melbourne ITA	>250	>5	0	262	+ 5
APODs	>90	<5	0	96	+ 4
QLD					
Brisbane ITA	>95	<5	0	101	- 2
APODs	118	6	0	124	+ 3
SA					
Adelaide ITA	24	0	0	24	- 1
APODs	<5	0	0	<5	+ 1
WA					
Yongah Hill IDC	353	0	0	353	- 36
Perth IDC	16	6	0	22	- 3
APODs	9	0	0	9	+ 6
North West Point IDC	74	0	0	74	+ 74
Christmas Island APODs	<5	<5	<5	<5	0
NT					
Northern APOD	9	7	0	16	0
Total IDCs	876	28	0	904	- 31
Total APODs	235	17	<5	254	+ 16
Total ITAs	377	10	0	387	+ 2
Total IDCs/APODs/ITAs	1,488	55	<5	1,545	- 13
Total in Community under Residence Determination	251	243	271	765	- 69
Total IMAs in Community on Bridging Visa E (Including people in a re-grant process)	9,051	1,469	1,884	12,404	+ 30

* Refer to Important Notice on APODs on page 3.

Detention Group	Men	Women	Children	Total	Change from 31/07/20
S501 Visa Cancellation	684	27	0	711	- 11
Illegal Maritime Arrival	488	13	<5	503	- 5
Other	316	15	0	331	+ 3
Total	1,488	55	<5	1,545	- 13

In Community under Residence Determination Population By State/Territory

Of the 765 people approved for a residence determination to live in the community, 34.9 per cent were in Victoria, 33.7 per cent in Queensland, 17.8 per cent in New South Wales, 10.6 per cent in South Australia, 3 per cent in Western Australia.

Table 3 – People in the Community under Residence Determination by State/Territory at 31 August 2020

State/Territory	Men	Women	Children	Total
Victoria	97	78	92	267
Queensland	82	80	96	258
New South Wales	38	55	43	136
South Australia	26	23	32	81
Western Australia	8	7	8	23
Total	251	243	271	765

Immigration Detention Population

From January 1990 to Current

The overall number of people in immigration detention including in the community under residence determination has increased by 149 to 2310 compared with 2161 at the end of August 2019. This number takes into account releases of detainees into the community under residence determination and detainees who were held in immigration detention facilities as at 31 August 2020.

Figure 1 – Population in Immigration Detention

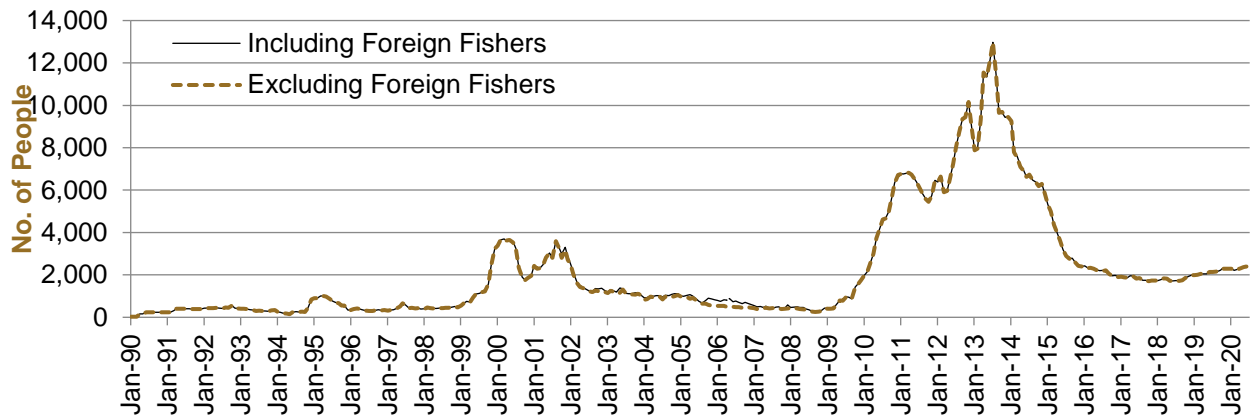


Figure 1 above, shows the number of people in immigration detention from 1990 to the date of this report.

People In Immigration Detention Facilities

Arrival Type

There were 523 people who arrived unlawfully by air or boat, in held immigration detention facilities at 31 August 2020 representing 33.9 per cent of the total immigration detention population.

There were also 1022 people (66.1 per cent of the total immigration population) who arrived in Australia lawfully and were subsequently taken into immigration detention for either overstaying or having their visas cancelled for breaching visa conditions.

Figure 2 – People in Held Immigration Detention Facilities by Detention Group

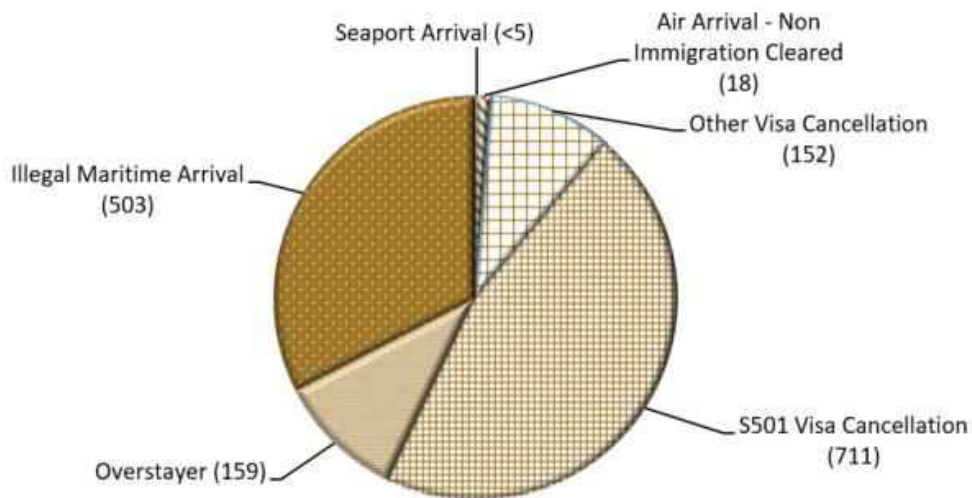


Figure 2 above, shows the number of people in held immigration detention facilities by detention group, including Overstayers, S501 and Other Visa Cancellations, Illegal Maritime Arrivals, Unauthorised Air Arrivals, and if applicable – Illegal Foreign Fishers and Others such as stowaways and ship deserters.

Table 4 – People in Held Immigration Detention Facilities by Detention Group at 31 August 2020

Place of immigration detention by State*	S501 Visa Cancellation	IMA	Other Detention Group	Total	Change from 31/07/20
NSW					
Villawood IDC	263	82	110	455	- 66
APODs	<5	<5	<5	<5	+ 2
VIC					
Melbourne ITA	98	88	76	262	+ 5
APODs	7	81	8	96	+ 4
QLD					
Brisbane ITA	52	30	19	101	- 2
APODs	18	99	7	124	+ 3
SA					
Adelaide ITA	5	14	5	24	- 1
APODs	<5	0	0	<5	+ 1
WA					
Yongah Hill IDC	190	82	81	353	- 36
Perth IDC	11	6	5	22	- 3
APODs	<5	<5	<5	9	+ 6
North West Point IDC	60	0	14	74	+ 74
Christmas Island APODs	0	<5	0	<5	0
NT					
Northern APOD	0	>10	<5	16	0
Total IDCs	524	170	210	904	- 31
Total APODs	32	201	21	254	+ 16
Total ITAs	155	132	100	387	+ 2
Total IDCs/APODs/ITAs	711	503	331	1,545	- 13

* Refer to Important Notice on APODs on page 3.

People In Immigration Detention

Nationality

At 31 August 2020, there were 1545 people in held immigration detention facilities. Of these 1545 people, 14.2 per cent were from Iran, 13.5 per cent were from New Zealand, 7.6 per cent were from Vietnam, 5.8 per cent were from Sudan and 5 per cent were from Sri Lanka.

Table 5 – People in Held Immigration Detention Facilities by Nationality at 31 August 2020

Nationalities	Men	Women	Children	Total
Iran	208	11	0	219
New Zealand	195	14	0	209
Vietnam	109	9	0	118
Sudan	>85	<5	0	90
Sri Lanka	73	<5	<5	77
Iraq	74	0	0	74
United Kingdom	>60	<5	0	66
India	57	0	0	57
Afghanistan	56	0	0	56
Pakistan	48	0	0	48
Other	517	14	0	531
Total	1,488	55	<5	1,545

At 31 August 2020, 765 were people living in the community after being approved for a residence determination. Of these 765 people, 52 per cent were from Iran, 12.9 per cent were Stateless, 9.9 per cent were from Sri Lanka, 8.6 per cent were from Somalia and 2.9 per cent were from Iraq.

Table 6 – People in the Community under Residence Determination by Nationality at 31 August 2020

Nationalities	Men	Women	Children	Total
Iran	126	137	135	398
Stateless	34	27	38	99
Sri Lanka	27	19	30	76
Somalia	17	27	22	66
Iraq	13	<5	<10	22
Other	34	>25	>40	104
Total	251	243	271	765

Children In Immigration Detention

At 31 August 2020 there were less than five children (aged less than 18 years) in Immigration Residential Housing, Immigration Transit Accommodation and Alternative Places of Detention.

Figure 3 – Children in Immigration Residential Housing, Immigration Transit Accommodation and Alternative Places of Detention

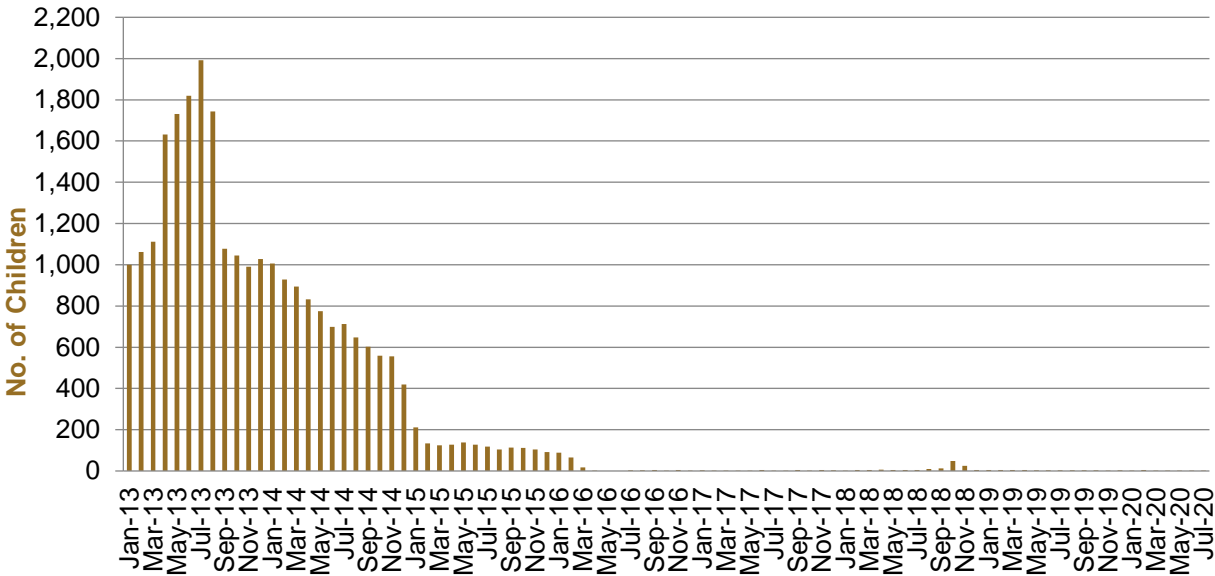


Figure 3 above, shows the number of children in Immigration Detention Facilities and Alternative Places of Detention from January 2013 to the date of this report. The continuous increase in the number of children in detention facilities from April 2013 to Aug 2013 was due to a rapid increase in illegal maritime arrivals during this period. The number of children in immigration detention facilities decreased in September 2013, as children completed mandatory processing and were transferred into the community. The number of children in detention facilities continued to decline during the late 2013 and 2014, with further reduction in January 2015. The increase in the number of children in alternative places of detention from August 2018 was following transfers from Nauru to Australia (with family members).

At 31 August 2020, the number of children living in the community after being approved for a residence determination has decreased by 6 to 271 from 277 in the previous report.

Figure 4 – Children in the Community under Residence Determination

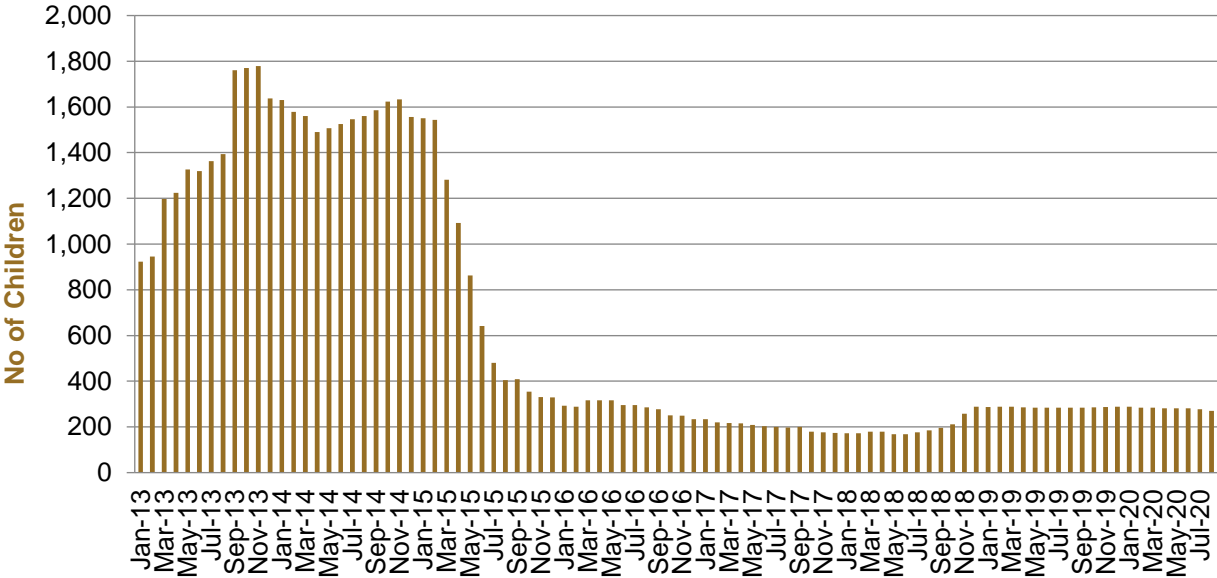


Figure 4 above, shows the number of children in the community under residence determination from January 2012 to the date of this report. The number of children in the community under residence determination, has levelled off at its lowest number since the peak in November 2013, as a result of releases into the community on Bridging E visas.

Table 7 – Children in Immigration Detention and IMA Children in the Community on a Bridging E Visa at 31 August 2020

Placement Type	Children
Immigration Residential Housing	0
Immigration Transit Accommodation	0
Alternative Places of Detention	<5
Total Facility	<5
Total in the Community under a Residence Determination	271
Total IMAs in the Community on a Bridging E visa (including in re-grant process)	1,884

Time In Immigration Detention Facilities

At 31 August 2020, there were 1545 people in immigration detention facilities.

Of these 1545 people, 17.9 per cent had been detained for 91 days or less and 52.2 per cent had been detained for 365 days or less.

Table 8 – Length of Time of People in Held Immigration Detention Facilities at 31 August 2020

Period Detained	Total	% of Total
7 days or less	29	1.9%
8 days - 31 days	80	5.2%
32 days - 91 days	167	10.8%
92 days - 182 days	177	11.5%
183 days - 365 days	353	22.8%
366 days - 547 days	236	15.3%
548 days - 730 days	107	6.9%
731 days - 1095 days	173	11.2%
1096 days - 1460 days	81	5.2%
1461 days - 1825 days	45	2.9%
Greater than 1826 days	97	6.3%
Total	1,545	100%

At 31 August 2020, the average period of time for people held in detention facilities was 564 days.

Figure 5 – Average Number of Days of People in Held Immigration Detention Facilities only

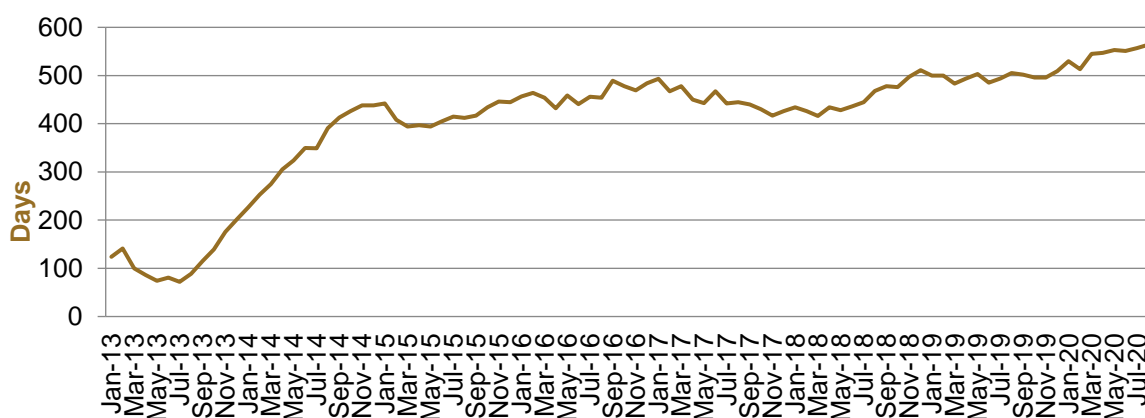


Figure 5 above, shows the average days in held immigration detention at the end of each month from January 2013 to the date of this report. The average period of time for people held in detention facilities steadily increased from July 2013 to January 2015. Between November 2018 and December 2019 the average number of days remained around 500. Since January 2020 the average period of time for people held in detention facilities has steadily increased.

The time an individual spends in immigration detention depends on a range of factors, including the complexity of their case, the legal processes they pursue and whether they voluntarily choose to leave Australia.

Time In Community Under Residence Determination

Of the 765 people in the community under residence determination, as at 31 August 2020, less than 1 per cent had been in the community for 91 days or less and 6.4 per cent had been in the community for 365 days or less.

Table 9 – Length of Time of People in Community under Residence Determination at 31 August 2020

Period Detained	Total	% of Total
7 days or less	<5	<0.7%
8 days - 31 days	0	0.0%
32 days - 91 days	<5	<0.7%
92 days - 182 days	<5	<0.7%
183 days - 365 days	44	5.8%
366 days - 547 days	68	8.9%
548 days - 730 days	292	38.2%
731 days - 1095 days	92	12.0%
1096 days - 1460 days	57	7.5%
1461 days - 1825 days	176	23.0%
Greater than 1826 days	31	4.1%
Total	765	100%