



Australian Government
Department of Home Affairs



Australian
BORDER FORCE

Immigration Detention and Community Statistics Summary

31 August 2019

Table of Contents

About this report.....	3
Enquiries.....	3
Acronyms.....	3
Immigration Detention And Community Statistics Summary.....	4
In Community under Residence Determination Population By State/Territory.....	4
Immigration Detention Population.....	6
From 1990 to 30 June 2019.....	6
People In Immigration Detention Facilities.....	7
Arrival Type.....	7
People In Immigration Detention.....	7
Nationality.....	8
Children In Immigration Detention.....	9
Time In Immigration Detention Facilities.....	11
Time In Community Under Residence Determination.....	12

About this report

This report provides an overview of the number of people in immigration detention and Regional Processing Centres as at midnight on the date of the report. The report is produced on a monthly basis.

Data is sourced from several departmental processing and recording systems. Data relating to the immigration detention population is dynamic and there can be delays in transmission of information from the Department's immigration detention network operations. Variations in figures between this report and previous issues can occur. Due to these issues, data from the current financial year should always be considered provisional.

Further information about immigration detention is available at:

<https://www.homeaffairs.gov.au/research-and-statistics/statistics/visa-statistics/live/immigration-detention>

Enquiries

Comments or enquiries concerning this report should be sent using the Department's client service feedback form quoting the name and date of the report.

See: <https://immi.homeaffairs.gov.au/help-support/contact-us>

Acronyms

Table 1 – Acronyms used in this document

Acronym	Description
APOD	Alternative Place of Detention
IMA	Illegal Maritime Arrival
IDC/F	Immigration Detention Centre/Facility
IRH	Immigration Residential Housing
ITA	Immigration Transit Accommodation
RPC	Regional Processing Centre
S501	Section 501 of the <i>Migration Act 1958</i> (the Migration Act)
S501 Visa Cancellation	Visa cancellations based on character or related grounds

Immigration Detention And Community Statistics Summary

At 31 August 2019, there were 1339 people in immigration detention facilities.

A further 822 people were living in the community after being approved for a residence determination and 13,995 were living in the community after grant of a Bridging Visa E.

The table below reflects figures based on records in Department of Home Affairs systems.

Table 2 – People in Immigration Detention Facilities (IDFs), Alternative Places of Detention (APODs), Regional Processing Centres (RPCs) and the Community at 31 August 2019

Place of immigration detention	Men	Women	Children	Total	Change from Previous Summary 31/07/19
Perth IDC	22	6	0	28	+ 3
Villawood IDC	424	32	0	456	- 21
Yongah Hill IDC	351	0	0	351	+ 2
Christmas Island APODs	0	0	0	0	0
Mainland APODs	<5	<5	0	<5	+ 2
Total IDCs/APODs	800	39	0	839	- 14
Adelaide ITA	27	<5	0	31	+ 7
Brisbane ITA	163	7	0	170	- 14
Melbourne ITA	274	22	<5	299	+ 18
Total in IRH and ITA	464	33	<5	500	+ 11
Total Facility	1,264	72	<5	1,339	- 3
Total in Community under Residence Determination	285	252	285	822	+ 29
Total in Community on Bridging Visa E (Including people in a re-grant process)	10,116	1,671	2,208	13,995	- 223
Total RPCs	0	0	0	0	0
Detention Group					
S501 Visa Cancellation	546	20	0	566	- 3
Illegal Maritime Arrival	421	22	<5	445	+ 24
Other	297	30	<5	328	- 24
Total	1,264	72	<5	1,339	- 3

In Community under Residence Determination Population By State/Territory

Of the 822 people approved for a residence determination to live in the community, 36.5 per cent were in Queensland, 29.7 per cent in Victoria, 19.2 per cent in New South Wales, 11.1 per cent in South Australia, 3.5 per cent in Western Australia.

Table 3 – People in the Community under Residence Determination by State/Territory at 31 August 2019

State/Territory	Adult Male	Adult Female	Child Male (<18 years)	Child Female (<18 years)	Total
Queensland	113	88	55	44	300
Victoria	82	69	53	40	244
New South Wales	51	61	28	18	158
South Australia	26	26	19	20	91
Western Australia	13	8	<5	<5	29
Total	285	252	159	126	822

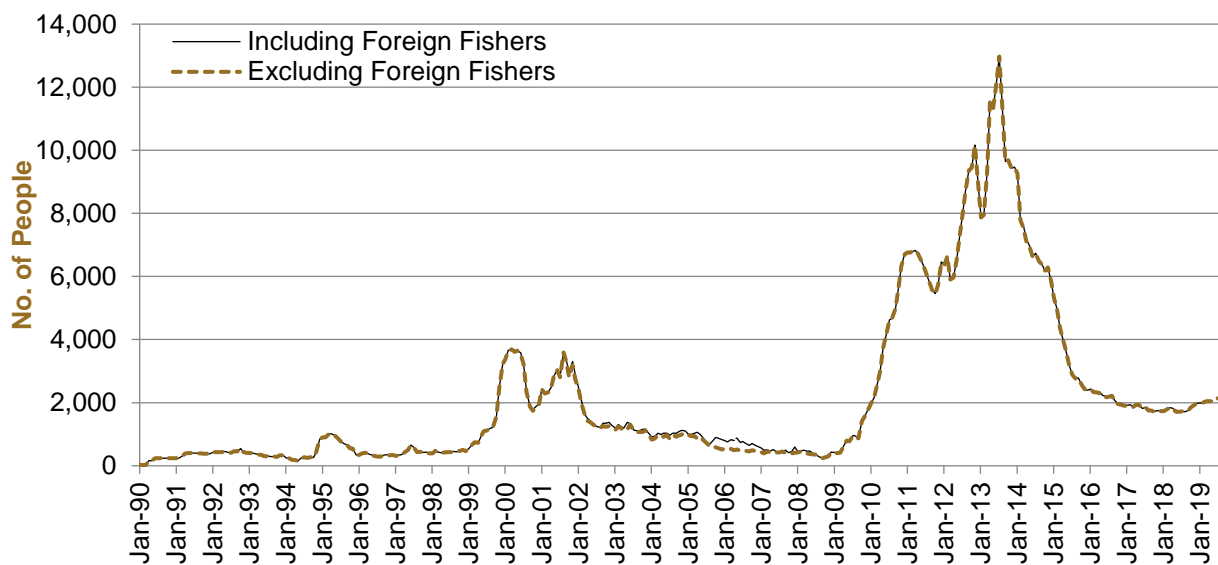
Immigration Detention Population

From January 1990 to 31 August 2019

The overall number of people in immigration detention including in the community under residence determination has increased by 445 to 2161 compared with 1716 at the end of August 2018. This number takes into account releases of detainees into the community under residence determination and detainees who were held in immigration detention facilities as at 31 August 2019.

Figure 1 – Population in Immigration Detention

Figure 1 above, shows the number of people in immigration detention from 1990 to the date of this report.



People In Immigration Detention Facilities

Arrival Type

There were 494 people who arrived unlawfully by air or boat, in held immigration detention facilities at 31 August 2019 representing 36.9 per cent of the total immigration detention population.

There were also 845 people (63.1 per cent of the total immigration population) who arrived in Australia lawfully and were subsequently taken into immigration detention for either overstaying or having their visas cancelled for breaching visa conditions.

Figure 2 – People in Held Immigration Detention Facilities by Detention Group

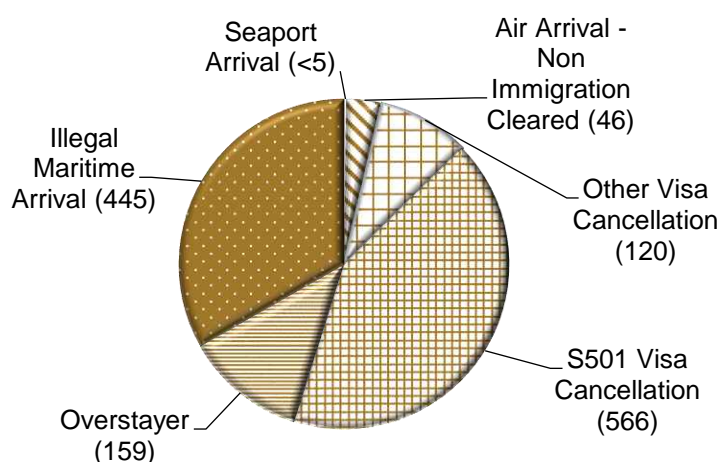


Figure 2 above, shows the number of people in held immigration detention facilities by detention group, including Overstayers, S501 and Other Visa Cancellations, Illegal Maritime Arrivals, Unauthorised Air Arrivals, and if applicable – Inadequately Documented Crew Members and Others such as stowaways and ship deserters.

Table 4 – People in Held Immigration Detention Facilities by Detention Group at 31 August 2019

Place of immigration detention	S501 Visa Cancellation	IMA	Other Detention Group	Total	Change from Previous Summary 31/07/19
Perth IDC	11	6	11	28	+ 3
Villawood IDC	246	77	133	456	- 21
Yongah Hill IDC	198	91	62	351	+ 2
Mainland APODs	0	<5	<5	<5	+ 2
Total IDCs/APODs	455	175	209	839	- 14
Adelaide ITA	<5	18	9	31	+ 7
Brisbane ITA	33	115	22	170	- 14
Melbourne ITA	74	137	88	299	+ 18
Total in IRH and ITA	111	270	119	500	+ 11
Total in IDC/F	566	445	328	1,339	- 3

People In Immigration Detention

Nationality

At 31 August 2019, there were 1339 people in held immigration detention facilities. Of these 1339 people, 13.2 per cent were from Iran, 11 per cent were from New Zealand, 6.9 per cent were from Vietnam, 6.3 per cent were from Sri Lanka and 5.5 per cent were from Sudan.

Table 5 – People in Held Immigration Detention Facilities by Nationality at 31 August 2019

Nationalities	Adult Male	Adult Female	Child Male (<18 years)	Child Female (<18 years)	Total
Iran	163	14	0	0	177
New Zealand	136	11	0	0	147
Vietnam	87	6	0	0	93
Sri Lanka	75	8	0	<5	85
Sudan	71	<5	0	0	73
Iraq	69	<5	0	0	70
India	55	5	0	0	60
United Kingdom	53	<5	0	0	55
Afghanistan	54	0	0	0	54
Stateless	43	<5	0	0	45
Other	458	21	<5	0	480
Total	1,264	72	<5	<5	1,339

At 31 August 2019, 822 were people living in the community after being approved for a residence determination. Of these 822 people, 53 per cent were from Iran, 12.2 per cent were from Stateless, 11.2 per cent were from Sri Lanka, 7.3 per cent were from Somalia and 2.8 per cent were from Iraq.

Table 6 – People in the Community under Residence Determination by Nationality at 31 August 2019

Nationalities	Adult Male	Adult Female	Child Male (<18 years)	Child Female (<18 years)	Total
Iran	146	147	80	63	436
Stateless	35	28	15	22	100
Sri Lanka	31	21	22	18	92
Somalia	19	25	11	5	60
Iraq	15	<5	<5	<5	23
Other	39	28	28	16	111
Total	285	252	159	126	822

Children In Immigration Detention

At 31 August 2019 there were less than five children (aged less than 18 years) in Immigration Residential Housing, Immigration Transit Accommodation and Alternative Places of Detention.

Figure 3 – Children in Immigration Residential Housing, Immigration Transit Accommodation and Alternative Places of Detention

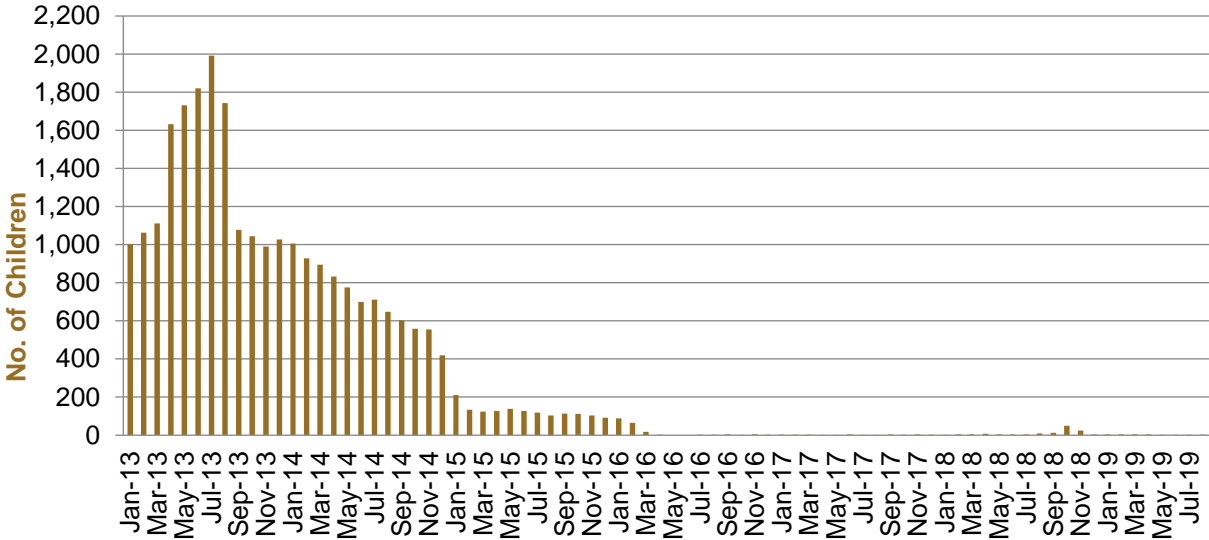


Figure 3 above, shows the number of children in immigration detention facilities and alternative places of detention from January 2013 to the date of this report. The continuous increase in the number of children in detention facilities from April 2013 to Aug 2013 was due to a rapid increase in illegal maritime arrivals during this period. The number of children in immigration detention facilities reduced in September 2013, as children completed mandatory processing and were transferred into the community. The number of children in detention facilities continued to decline during the late 2013 and 2014, with further reduction in January 2015. The increase in the number of children in alternative places of detention from August 2018 was following transfers from Nauru to Australia (with family members).

At 31 August 2019, the number of children living in the community after being approved for a residence determination increased by 2 to 285 from 283 in the previous report.

Figure 4 – Children in the Community under Residence Determination

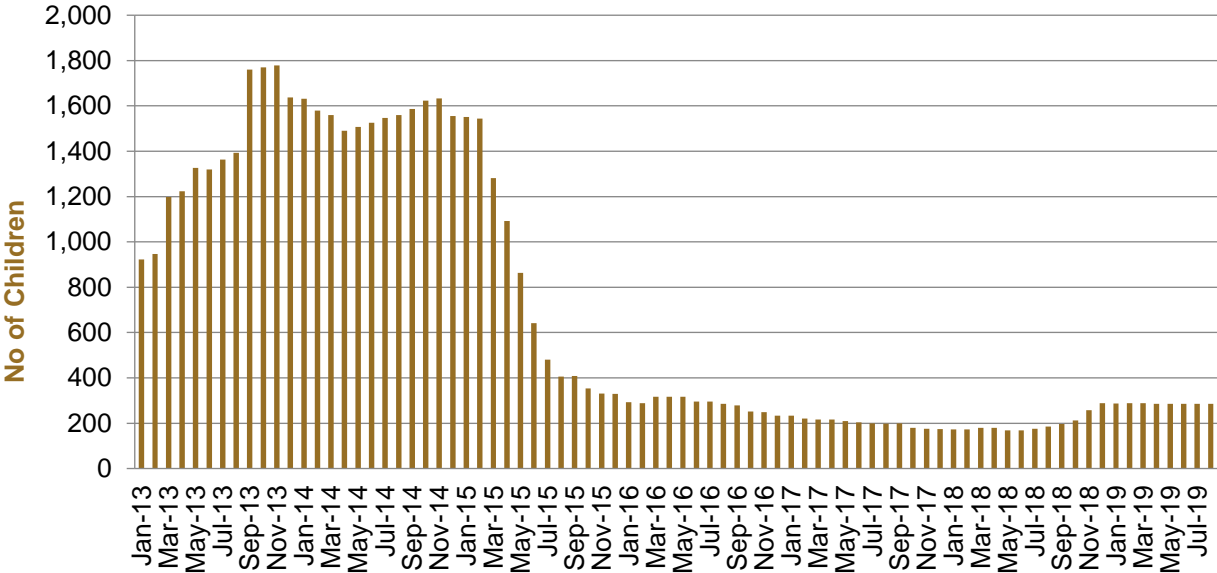


Figure 4 above, shows the number of children in the community under residence determination from January 2012 to the date of this report. The number of children in the community under residence determination, has levelled off at its lowest number since the peak in November 2013, as a result of releases into the community on Bridging E visas.

Table 7 – Children in Immigration Detention and IMA Children in the Community on a Bridging E Visa at 31 August 2019

Placement Type	Children
Immigration Residential Housing	0
Immigration Transit Accommodation	<5
Alternative Places of Detention	0
Total Facility	<5
Total in the Community under a Residence Determination	285
Total in the Community on a Bridging E visa (including in re-grant process)	2,210

Time In Immigration Detention Facilities

At 31 August 2019, there were 1339 people in immigration detention facilities.

Of these 1339 people, 28.9 per cent had been detained for 91 days or less and 57.9 per cent had been detained for 365 days or less

Table 8 – Length of Time of People in Held Immigration Detention Facilities at 31 August 2019

Period Detained	Total	% of Total
7 days or less	38	2.8%
8 days - 31 days	132	9.9%
32 days - 91 days	217	16.2%
92 days - 182 days	173	12.9%
183 days - 365 days	215	16.1%
366 days - 547 days	149	11.1%
548 days - 730 days	113	8.4%
Greater than 730 days	302	22.6%
Total	1,339	100%

At 31 August 2019, the average period of time for people held in detention facilities was 505 days.

Figure 5 – Average Number of Days of People in Held Immigration Detention Facilities only

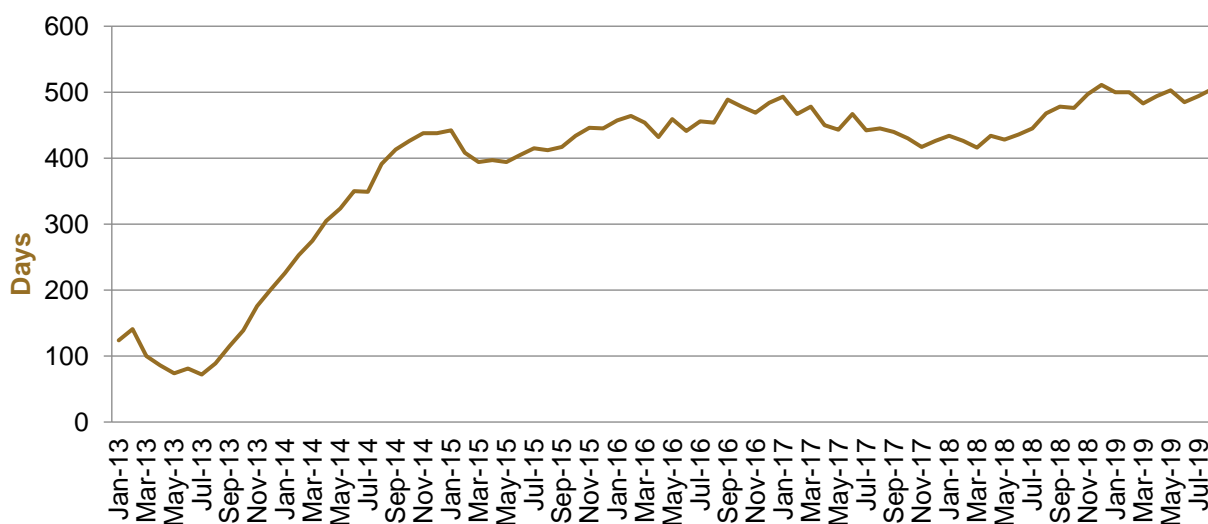


Figure 5 above, shows the average days in held immigration detention at the end of each month from January 2013 to the date of this report. The average period of time for people held in detention facilities steadily increased from July 2013 to January 2015.

Time In Community Under Residence Determination

Of the 822 people in the community under residence determination, as at 31 August 2019, 5.5 per cent had been in the community for 91 days or less and 51.9 per cent had been in the community for 365 days or less.

Table 9 – Length of Time of People in Community under Residence Determination at 31 August 2019

Period Detained	Total	% of Total
7 days or less	<5	0.1%
8 days - 31 days	30	3.6%
32 days - 91 days	14	1.7%
92 days - 182 days	57	6.9%
183 days - 365 days	325	39.5%
366 days - 547 days	70	8.5%
548 days - 730 days	29	3.5%
Greater than 730 days	296	36.0%
Total	822	100%