



Australian Government
Department of Home Affairs



Australian
BORDER FORCE

Immigration Detention and Community Statistics Summary

30 September 2022

Table of Contents

About this report	3
Enquiries	3
Acronyms	3
Important Notice on APODs	3
Immigration Detention and Community Statistics Summary	4
In Community under Residence Determination Population by State/Territory	5
Immigration Detention Population.....	6
From January 1990 to Current.....	6
People In Immigration Detention Facilities.....	7
Arrival Type.....	7
People In Immigration Detention	9
Nationality	9
Children In Immigration Detention	10
Time In Immigration Detention Facilities	12
Time In Community Under Residence Determination	13

About this report

This report provides an overview of the number of people in onshore immigration detention as at midnight on the date of the report. The report is produced on a monthly basis.

As data is sourced from several departmental processing and recording systems, data relating to the immigration detention population is dynamic and variations between monthly reports can occur. Due to these issues, data from the current financial year should always be considered provisional.

Further information about immigration detention is available at:

<https://www.homeaffairs.gov.au/research-and-statistics/statistics/visa-statistics/live/immigration-detention>

Enquiries

Comments or enquiries concerning this report should be sent using the Department's client service feedback form quoting the name and date of the report.

See: <https://immi.homeaffairs.gov.au/help-support/contact-us>

Acronyms

Table 1 – Acronyms used in this document

Acronym	Description
APOD	Alternative Place of Detention
UMA	Unauthorised Maritime Arrival
IDC/F	Immigration Detention Centre/Facility
IRH	Immigration Residential Housing
ITA	Immigration Transit Accommodation
S501	Section 501 of the <i>Migration Act 1958</i> (the Migration Act)
S501 Visa Cancellation	Visa cancellations based on character or related grounds

Important Notice on APODs

From July 2020, detainees residing in APODs are reported under 'APODs' rather than under the ITA or IDC that had responsibility for their management and care. APODs include hospitals, aged-care facilities, mental health inpatient facilities, as well as hotel and apartment style accommodation. The number of individuals in APODs is provided by the State and Territory of the APODs.

Immigration Detention and Community Statistics Summary

At 30 September 2022, there were 1333 people in immigration detention facilities.

Of the 1333 people in immigration detention facilities, 1213 (91.0 per cent) have a criminal history.

A further 540 people were living in the community after being approved for residence determination and 10,789 UMAs were living in the community after grant of a Bridging Visa E.

The table below reflects figures based on records in Department of Home Affairs systems.

Table 2 – People in Immigration Detention Centres (IDCs), Alternative Places of Detention (APODs), Immigration Transit Accommodation (ITA) and the Community at 30 September 2022

Place of immigration detention by State*	Men	Women	Children	Total	Change from 31/08/22
NSW					
Villawood IDC	442	28	0	470	+ 7
APODs	<10	<5	0	8	- 48
VIC					
Melbourne ITA	201	6	0	207	- 3
APODs	<5	<5	0	<10	- <5
QLD					
Brisbane ITA	90	0	0	90	- 1
APODs	26	7	0	33	0
SA					
Adelaide ITA	22	0	0	22	+ 1
APODs	0	0	0	0	- <5
WA					
Yongah Hill IDC	284	0	0	284	+ 35
Perth IDC	14	10	0	24	0
APODs	<15	<5	0	15	+ <5
North West Point IDC	173	0	0	173	- 12
Christmas Island APODs	0	0	0	0	0
NT					
APODs	<5	0	0	<5	+ <5
Total IDCs	913	38	0	951	+ 30
Total APODs	50	13	0	63	- 49
Total ITAs	313	6	0	319	- 3
Total IDCs/APODs/ITAs	1,276	57	0	1,333	- 22
Total in Community under Residence Determination	227	150	163	540	- 13
Total UMAs in Community on Bridging Visa E (Including people in a re-grant process)	8,166	1,238	1,385	10,789	- 45

* Refer to Important Notice on APODs on page 3.

In Community under Residence Determination Population by State/Territory

Of the 540 people approved for a residence determination to live in the community, 47.8 per cent were in Victoria, 31.9 per cent in Queensland, 15.6 per cent in New South Wales, 3.0 per cent in South Australia and 1.9 per cent in Western Australia.

Table 3 – People in the Community under Residence Determination by State/Territory at 30 September 2022

State/Territory	Men	Women	Children	Total
New South Wales	34	27	23	84
Victoria	106	75	77	258
Queensland	70	43	59	172
South Australia	11	<5	<5	16
Western Australia	6	<5	<5	10
Total	227	150	163	540

Immigration Detention Population

From January 1990 to Current

The overall number of people in immigration detention including in the community under residence determination has decreased by 148 to 1873 compared with 2021 at the end of September 2021. This number takes into account detainees in the community under residence determination and detainees who were held in immigration detention facilities as at 30 September 2022.

Figure 1 – Population in Immigration Detention

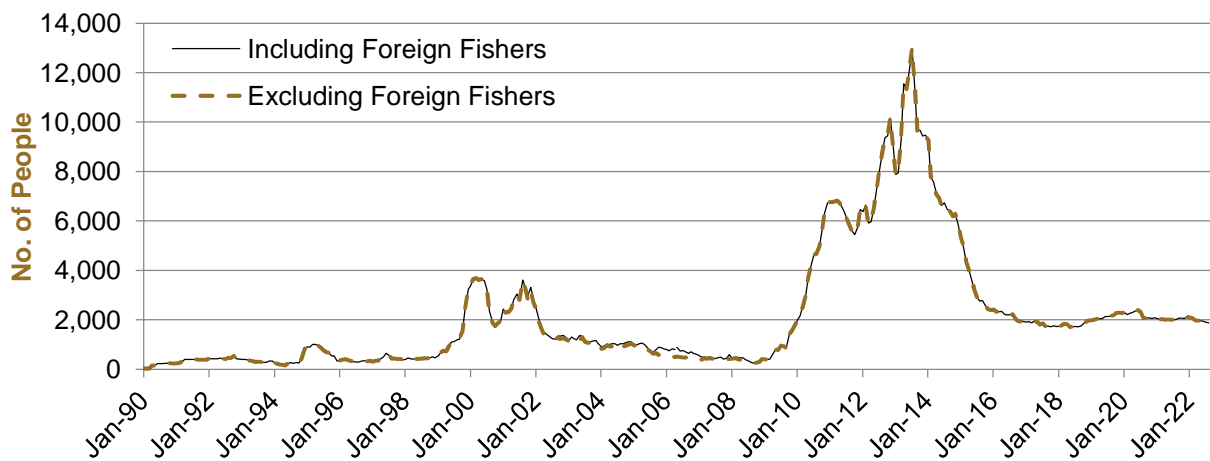


Figure 1 above, shows the number of people in immigration detention from 1990 to 2022.

People In Immigration Detention Facilities

Arrival Type

There were 222 people who arrived unlawfully by air or boat, in held immigration detention facilities at 30 September 2022 representing 16.7 per cent of the total immigration detention population.

There were also 1111 people (83.3 per cent of the total immigration detention population) who arrived in Australia lawfully and were subsequently taken into immigration detention for either overstaying or having their visas cancelled for breaching visa conditions.

Figure 2 – People in Held Immigration Detention Facilities by Detention Group

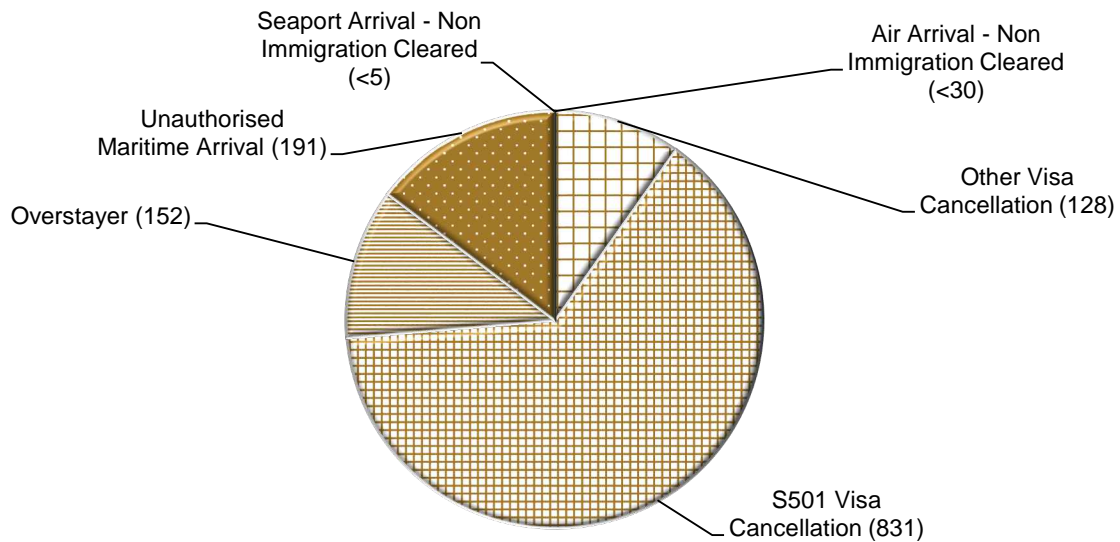


Figure 2 above, shows the number of people in held immigration detention facilities at 30 September 2022 by detention group, including Overstayers, S501 and Other Visa Cancellations, Unauthorised Maritime Arrivals, Unauthorised Air Arrivals, and if applicable – Illegal Foreign Fishers and Others such as stowaways and ship deserters.

Table 4 – People in Held Immigration Detention Facilities by Detention Group at 30 September 2022

Place of immigration detention by State*	S501 Visa Cancellation	UMA	Other Detention Group	Total	Change from 31/08/22
NSW					
Villawood IDC	295	52	123	470	+ 7
APODs	<10	0	<5	8	- 48
VIC					
Melbourne ITA	110	42	55	207	- 3
APODs	<5	0	<5	<10	- <5
QLD					
Brisbane ITA	70	<15	<10	90	- 1
APODs	24	<5	<10	33	0
SA					
Adelaide ITA	16	<5	<5	22	+ 1
APODs	0	0	0	0	- <5
WA					
Yongah Hill IDC	161	62	61	284	+ 35
Perth IDC	12	<5	<10	24	0
APODs	5	<5	<10	15	+ <5
North West Point IDC	130	<20	<35	173	- 12
Christmas Island APODs	0	0	0	0	0
NT					
APODs	<5	0	<5	<5	+ <5
Total IDCs	598	131	222	951	+ 30
Total APODs	37	<5	<25	63	- 49
Total ITAs	196	<60	<70	319	- 3
Total IDCs/APODs/ITAs	831	191	311	1,333	- 22

* Refer to Important Notice on APODs on page 3.

Table 5 – People in Held Immigration Detention Facilities by Detention Group and Cohort at 30 September 2022

Detention Group	Men	Women	Children	Total	Change from 31/08/22
S501 Visa Cancellation	799	32	0	831	+ 2
Unauthorised Maritime Arrival	<195	<10	0	191	- 8
Other	<290	<25	0	311	- 16
Total	1,276	57	0	1,333	- 22

People In Immigration Detention

Nationality

At 30 September 2022, there were 1333 people in held immigration detention facilities. Of these 1333 people, 16.2 per cent were from New Zealand, 8.1 per cent were from Iran, 5.6 per cent were from Vietnam, 5.1 per cent were from Sudan and 4.8 per cent were from India.

Table 6 – People in Held Immigration Detention Facilities by Nationality at 30 September 2022

Nationalities	Men	Women	Children	Total
New Zealand	200	16	0	216
Iran	<110	<5	0	108
Vietnam	64	10	0	74
Sudan	<70	<5	0	68
India	<65	<5	0	64
Tonga	56	0	0	56
Afghanistan	55	0	0	55
Iraq	<55	<10	0	51
Stateless	42	0	0	42
United Kingdom	<45	<5	0	42
Other	535	22	0	557
Total	1,276	57	0	1,333

At 30 September 2022, 540 were people living in the community after being approved for a residence determination. Of these 540 people, 53.0 per cent were from Iran, 10.6 per cent were Stateless, 8.7 per cent were from Sri Lanka, 8.5 per cent were from Somalia and 3.9 per cent were from Iraq.

Table 7 – People in the Community under Residence Determination by Nationality at 30 September 2022

Nationalities	Men	Women	Children	Total
Iran	101	94	91	286
Stateless	27	13	17	57
Sri Lanka	18	10	19	47
Somalia	16	17	13	46
Iraq	18	<5	<5	21
Other	47	<20	<25	83
Total	227	150	163	540

Children In Immigration Detention

At 30 September 2022 there were no children (aged less than 18 years) in Immigration Residential Housing, Immigration Transit Accommodation and Alternative Places of Detention.

Figure 3 – Children in Immigration Residential Housing, Immigration Transit Accommodation and Alternative Places of Detention

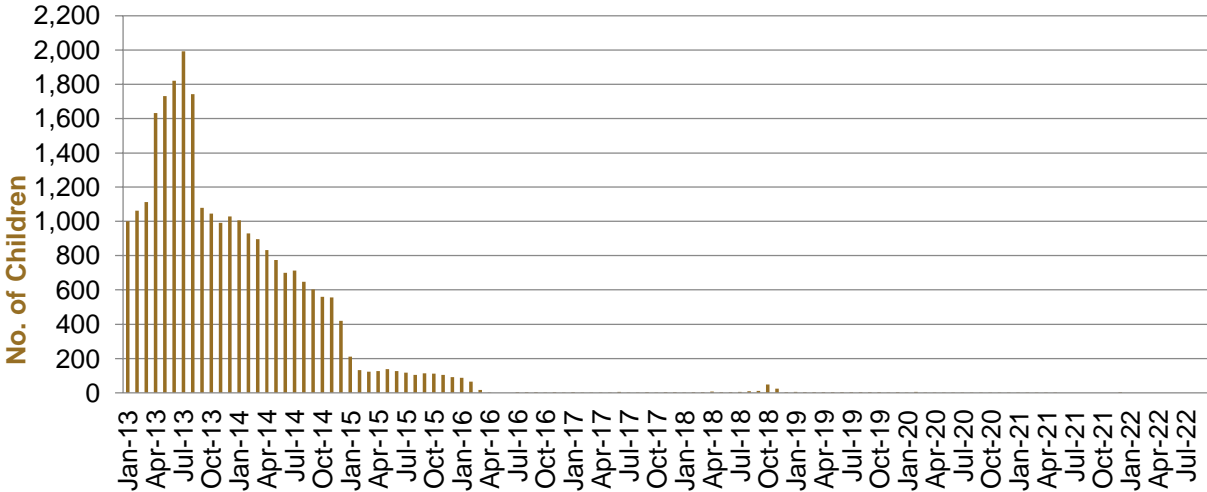


Figure 3 above, shows the number of children in IDFs and APODs from January 2013 to the date of this report. The continuous increase in the number of children in IDFs from April 2013 to Aug 2013 was due to a rapid increase in UMAs during this period. The number of children in IDFs continued to decline during the late 2013 and 2014, with further reduction in January 2015.

At 30 September 2022, the number of children living in the community after being approved for a residence determination has decreased by three to 163 compared with 166 at the end of August 2022.

Figure 4 – Children in the Community under Residence Determination

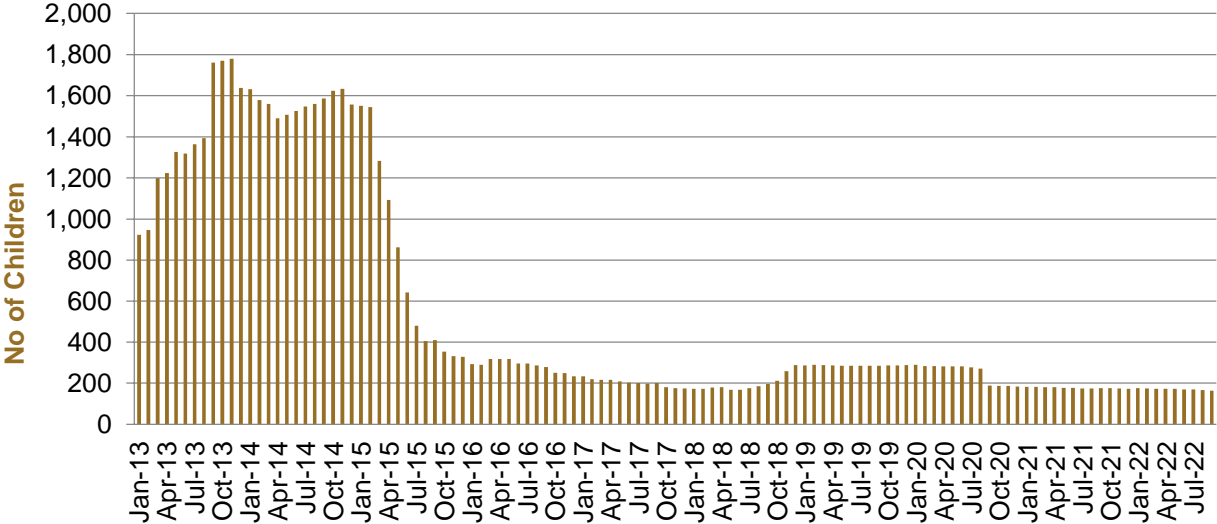


Figure 4 above, shows the number of children in the community under residence determination from January 2013 to the date of this report. The number of children in the community under residence determination, has levelled off at its lowest number since the peak in November 2013, as a result of releases into the community on Bridging E visas.

Table 8 – Children in Immigration Detention and UMA Children in the Community on a Bridging E Visa at 30 September 2022

Placement Type	Children
Immigration Residential Housing	0
Immigration Transit Accommodation	0
Alternative Places of Detention	0
Total Facility	0
Total in the Community under a Residence Determination	163
Total UMAs in the Community on a Bridging E visa (including in re-grant process)	1,385

Time In Immigration Detention Facilities

At 30 September 2022, there were 1333 people in immigration detention facilities.

Of these 1333 people, 16.9 per cent had been detained for 91 days or less and 43.4 per cent had been detained for 365 days or less.

Table 9 – Length of Time of People in Held Immigration Detention Facilities at 30 September 2022

Period Detained	Total	% of Total
7 days or less	29	2.2%
8 days - 31 days	75	5.6%
32 days - 91 days	121	9.1%
92 days - 182 days	151	11.3%
183 days - 365 days	202	15.2%
366 days - 547 days	138	10.4%
548 days - 730 days	115	8.6%
731 days - 1095 days	154	11.6%
1096 days - 1460 days	100	7.5%
1461 days - 1825 days	93	7.0%
Greater than 1825 days	155	11.6%
Total	1,333	100.0%

At 30 September 2022, the average period of time for people held in detention facilities was 781 days.

Figure 5 – Average Number of Days of People in Held Immigration Detention Facilities only

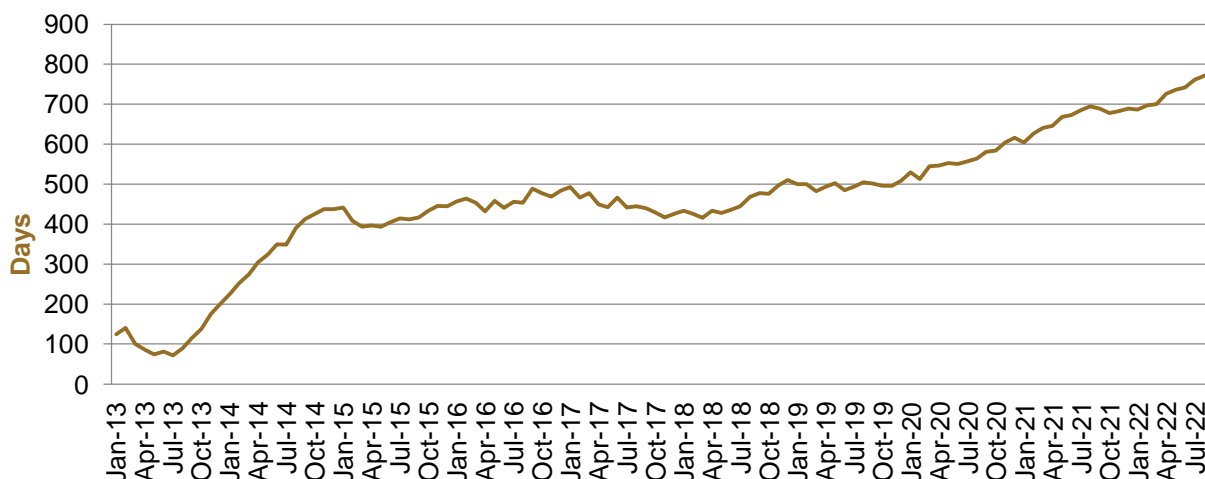


Figure 5 above, shows the average days in held immigration detention at the end of each month from January 2013 to the date of this report. The average period of time for people held in detention facilities steadily increased from July 2013 to January 2015. Between November 2018 and December 2019 the average number of days remained around 500. Since January 2020 the average period of time for people held in detention facilities has steadily increased.

The time an individual spends in immigration detention depends on a range of factors, including the complexity of their case, the legal processes they pursue and whether they voluntarily choose to leave Australia.

Time In Community Under Residence Determination

Of the 540 people in the community under residence determination, as at 30 September 2022, less than two per cent had been in the community for 91 days or less and less than six per cent had been in the community for 365 days or less.

Table 10 – Length of Time of People in Community under Residence Determination at 30 September 2022

Period Detained	Total	% of Total
7 days or less	<5	<1.0%
8 days - 31 days	0	0.0%
32 days - 91 days	<5	<1.0%
92 days - 182 days	7	1.3%
183 days - 365 days	16	3.0%
366 days - 547 days	39	7.2%
548 days - 730 days	25	4.6%
731 days - 1095 days	14	2.6%
1096 days - 1460 days	192	35.6%
1461 days - 1825 days	72	13.3%
Greater than 1825 days	169	31.3%
Total	540	100.0%