



Australian Government
Department of Home Affairs



Australian
BORDER FORCE

Immigration Detention and Community Statistics Summary

30 September 2019

Table of Contents

About this report.....	3
Enquiries.....	3
Acronyms.....	3
Immigration Detention And Community Statistics Summary.....	4
In Community under Residence Determination Population By State/Territory.....	5
Immigration Detention Population.....	6
From 1990 to 30 June 2019.....	6
People In Immigration Detention Facilities.....	7
Arrival Type.....	7
People In Immigration Detention.....	7
Nationality.....	8
Children In Immigration Detention.....	9
Time In Immigration Detention Facilities.....	11
Time In Community Under Residence Determination.....	12

About this report

This report provides an overview of the number of people in immigration detention and Regional Processing Centres as at midnight on the date of the report. The report is produced on a monthly basis.

Data is sourced from several departmental processing and recording systems. Data relating to the immigration detention population is dynamic and there can be delays in transmission of information from the Department's immigration detention network operations. Variations in figures between this report and previous issues can occur. Due to these issues, data from the current financial year should always be considered provisional.

Further information about immigration detention is available at:

<https://www.homeaffairs.gov.au/research-and-statistics/statistics/visa-statistics/live/immigration-detention>

Enquiries

Comments or enquiries concerning this report should be sent using the Department's client service feedback form quoting the name and date of the report.

See: <https://immi.homeaffairs.gov.au/help-support/contact-us>

Acronyms

Table 1 – Acronyms used in this document

Acronym	Description
APOD	Alternative Place of Detention
IMA	Illegal Maritime Arrival
IDC/F	Immigration Detention Centre/Facility
IRH	Immigration Residential Housing
ITA	Immigration Transit Accommodation
RPC	Regional Processing Centre
S501	Section 501 of the <i>Migration Act 1958</i> (the Migration Act)
S501 Visa Cancellation	Visa cancellations based on character or related grounds

Immigration Detention And Community Statistics Summary

At 30 September 2019, there were 1347 people in immigration detention facilities, including 1343 in immigration detention on the mainland and less than 5 in immigration detention on Christmas Island.

A further 843 people were living in the community after being approved for a residence determination and 13,827 IMAs were living in the community after grant of a Bridging Visa E.

The table below reflects figures based on records in Department of Home Affairs systems.

Table 2 – People in Immigration Detention Facilities (IDFs), Alternative Places of Detention (APODs), Regional Processing Centres (RPCs) and the Community at 30 September 2019

Place of immigration detention	Men	Women	Children	Total	Change from Previous Summary 31/08/19
Perth IDC	18	8	0	26	- 2
Villawood IDC	444	28	0	472	+ 16
Yongah Hill IDC	340	0	0	340	- 11
Christmas Island APODs	<5	<5	<5	<5	+ 4
Mainland APODs	<5	<5	<5	<5	- 1
Total IDCs/APODs	805	38	<5	845	+ 6
Adelaide ITA	24	<5	0	26	- 5
Brisbane ITA	184	10	0	194	+ 24
Melbourne ITA	260	21	<5	282	- 17
Total in IRH and ITA	468	33	<5	502	+ 2
Total Facility	1,273	71	<5	1,347	+ 8
Total in Community under Residence Determination	296	262	285	843	+21
Total IMAs in Community on Bridging Visa E (Including people in a re-grant process)	9,991	1,654	2,182	13,827	- 168
Total RPCs	0	0	0	0	0
Detention Group					
S501 Visa Cancellation	561	25	0	586	+ 20
Illegal Maritime Arrival	418	13	<5	433	- 12
Other	294	33	<5	328	0
Total	1,273	71	<5	1,347	+ 8

In Community under Residence Determination Population By State/Territory

Of the 843 people approved for a residence determination to live in the community, 36.2 per cent were in Queensland, 30.5 per cent in Victoria, 18.9 per cent in New South Wales, 11 per cent in South Australia and 3.4 per cent in Western Australia.

Table 3 – People in the Community under Residence Determination by State/Territory at 30 September 2019

State/Territory	Adult Male	Adult Female	Child Male (<18 years)	Child Female (<18 years)	Total
Queensland	118	91	53	43	305
Victoria	87	74	56	40	257
New South Wales	51	62	28	18	159
South Australia	27	27	19	20	93
Western Australia	13	8	<5	<5	29
Total	296	262	160	125	843

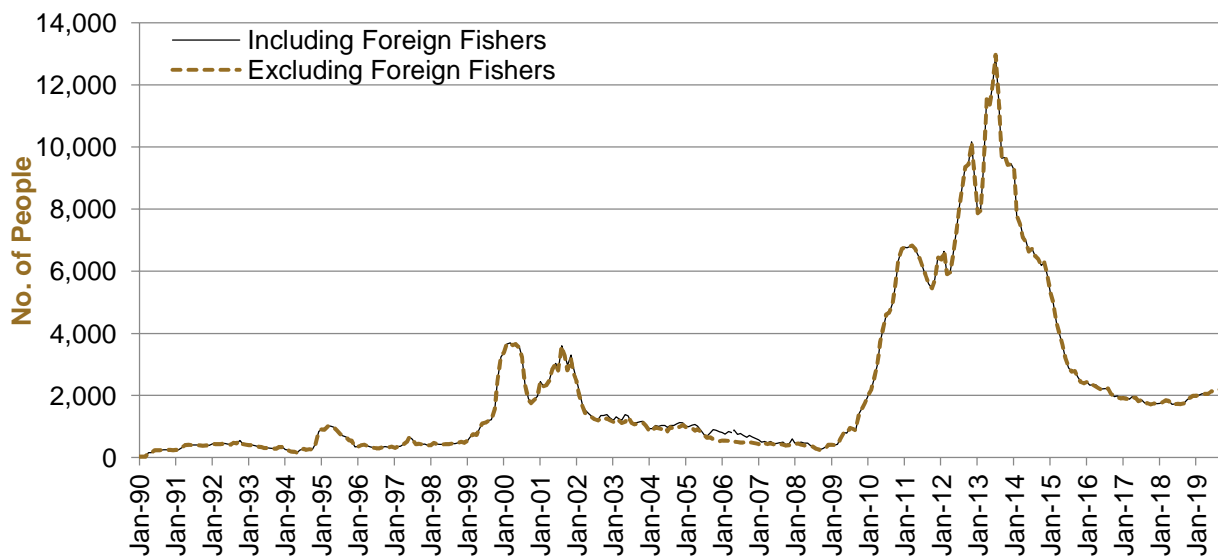
Immigration Detention Population

From January 1990 to 30 September 2019

The overall number of people in immigration detention including in the community under residence determination has increased by 441 to 2190 compared with 1749 at the end of September 2018. This number takes into account releases of detainees into the community under residence determination and detainees who were held in immigration detention facilities as at 30 September 2019.

Figure 1 – Population in Immigration Detention

Figure 1 above, shows the number of people in immigration detention from 1990 to the date of this report.



People In Immigration Detention Facilities

Arrival Type

There were 484 people who arrived unlawfully by air or boat, in held immigration detention facilities at 30 September 2019 representing 35.9 per cent of the total immigration detention population.

There were also 863 people (64.1 per cent of the total immigration population) who arrived in Australia lawfully and were subsequently taken into immigration detention for either overstaying or having their visas cancelled for breaching visa conditions.

Figure 2 – People in Held Immigration Detention Facilities by Detention Group

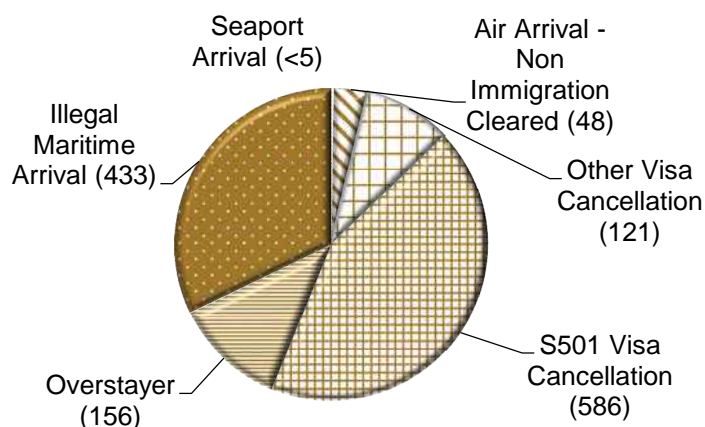


Figure 2 above, shows the number of people in held immigration detention facilities by detention group, including Overstayers, S501 and Other Visa Cancellations, Illegal Maritime Arrivals, Unauthorised Air Arrivals, and if applicable – Inadequately Documented Crew Members and Others such as stowaways and ship deserters.

Table 4 – People in Held Immigration Detention Facilities by Detention Group at 30 September 2019

Place of immigration detention	S501 Visa Cancellation	IMA	Other Detention Group	Total	Change from Previous Summary 31/08/19
Perth IDC	14	<5	8	26	- 2
Villawood IDC	257	79	136	472	+ 16
Yongah Hill IDC	190	88	62	340	- 11
Christmas Island APODs	0	<5	0	<5	+ 4
Mainland APODs	0	<5	<5	<5	- 1
Total IDCs/APODs	461	176	208	845	+ 6
Adelaide ITA	5	18	<5	26	- 5
Brisbane ITA	43	125	26	194	+ 24
Melbourne ITA	77	114	91	282	- 17
Total in IRH and ITA	125	257	120	502	+ 2
Total in IDC/F	586	433	328	1,347	+ 8

People In Immigration Detention

Nationality

At 30 September 2019, there were 1347 people in held immigration detention facilities. Of these 1347 people, 12.9 per cent were from Iran, 10.9 per cent were from New Zealand, 6.5 per cent were from Vietnam, 6.2 per cent were from Sri Lanka and 5.6 per cent were from Sudan.

Table 5 – People in Held Immigration Detention Facilities by Nationality at 30 September 2019

Nationalities	Adult Male	Adult Female	Child Male (<18 years)	Child Female (<18 years)	Total
Iran	165	9	0	0	174
New Zealand	133	14	0	0	147
Vietnam	77	10	0	0	87
Sri Lanka	73	8	0	<5	83
Sudan	74	<5	0	0	76
Iraq	67	0	0	0	67
Afghanistan	59	0	0	0	59
United Kingdom	56	<5	0	0	59
India	47	<5	0	0	50
Stateless	43	<5	0	0	45
Other	479	20	<5	0	500
Total	1,273	71	<5	<5	1,347

At 30 September 2019, 843 were people living in the community after being approved for a residence determination. Of these 843 people, 52.9 per cent were from Iran, 12.3 per cent were from Stateless, 10.9 per cent were from Sri Lanka, 7.5 per cent were from Somalia and 3.1 per cent were from Iraq.

Table 6 – People in the Community under Residence Determination by Nationality at 30 September 2019

Nationalities	Adult Male	Adult Female	Child Male (<18 years)	Child Female (<18 years)	Total
Iran	151	153	80	62	446
Stateless	38	29	15	22	104
Sri Lanka	31	21	22	18	92
Somalia	19	27	12	5	63
Iraq	17	<5	<5	<5	26
Other	40	28	28	16	112
Total	296	262	160	125	843

Children In Immigration Detention

At 30 September 2019 there were less than five children (aged less than 18 years) in Immigration Residential Housing, Immigration Transit Accommodation and Alternative Places of Detention.

Figure 3 – Children in Immigration Residential Housing, Immigration Transit Accommodation and Alternative Places of Detention

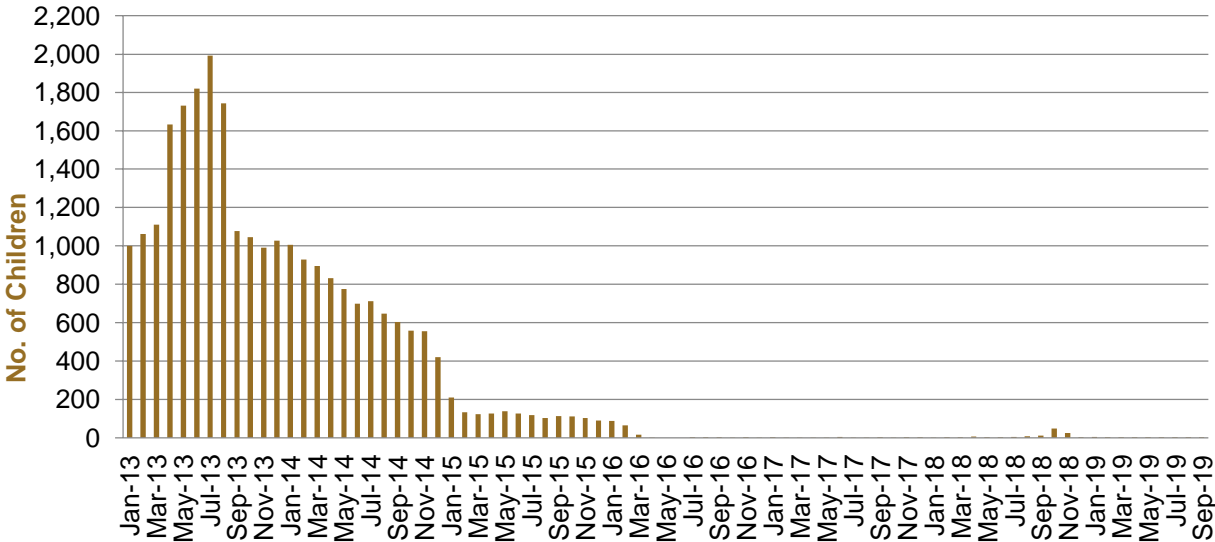


Figure 3 above, shows the number of children in immigration detention facilities and alternative places of detention from January 2013 to the date of this report. The continuous increase in the number of children in detention facilities from April 2013 to Aug 2013 was due to a rapid increase in illegal maritime arrivals during this period. The number of children in immigration detention facilities reduced in September 2013, as children completed mandatory processing and were transferred into the community. The number of children in detention facilities continued to decline during the late 2013 and 2014, with further reduction in January 2015. The increase in the number of children in alternative places of detention from August 2018 was following transfers from Nauru to Australia (with family members).

At 30 September 2019, the number of children living in the community after being approved for a residence determination remained the same at 285 from 285 in the previous report.

Figure 4 – Children in the Community under Residence Determination

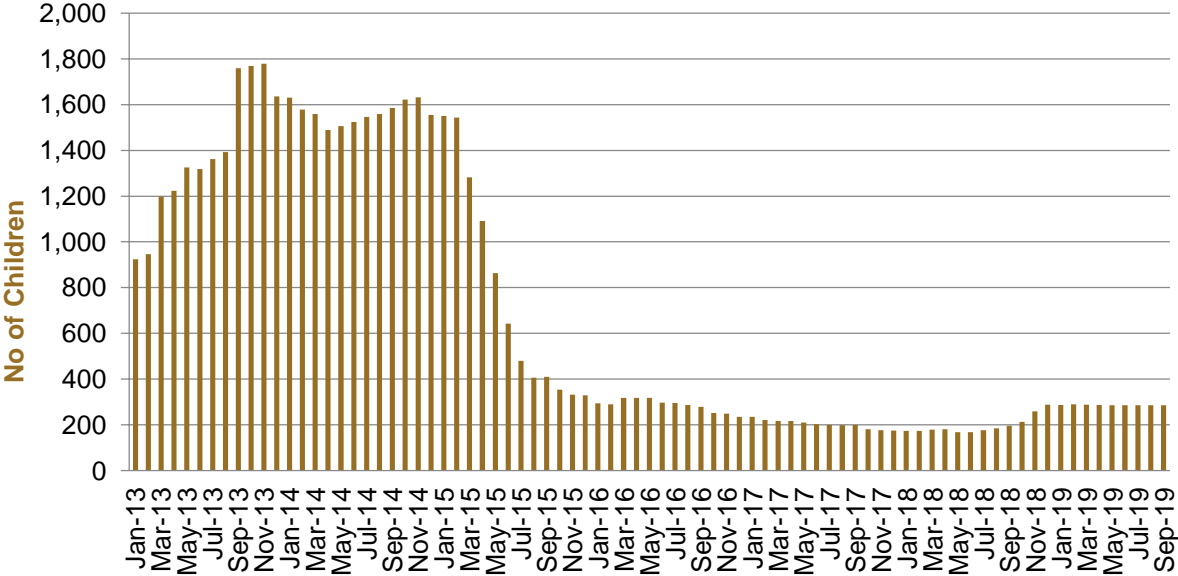


Figure 4 above, shows the number of children in the community under residence determination from January 2012 to the date of this report. The number of children in the community under residence determination, has levelled off at its lowest number since the peak in November 2013, as a result of releases into the community on Bridging E visas.

Table 7 – Children in Immigration Detention and IMA Children in the Community on a Bridging E Visa at 31 August 2019

Placement Type	Children
Immigration Residential Housing	0
Immigration Transit Accommodation	<5
Alternative Places of Detention	<5
Total Facility	<5
Total in the Community under a Residence Determination	285
Total IMAs in the Community on a Bridging E visa (including in re-grant process)	2,182

Time In Immigration Detention Facilities

At 30 September 2019, there were 1347 people in immigration detention facilities.

Of these 1347 people, 29 per cent had been detained for 91 days or less and 58.4 per cent had been detained for 365 days or less.

Table 8 – Length of Time of People in Held Immigration Detention Facilities at 30 September 2019

Period Detained	Total	% of Total
7 days or less	48	3.6%
8 days - 31 days	115	8.5%
32 days - 91 days	227	16.9%
92 days - 182 days	184	13.7%
183 days - 365 days	213	15.8%
366 days - 547 days	148	11.0%
548 days - 730 days	112	8.3%
Greater than 730 days	300	22.3%
Total	1,347	100%

At 30 September 2019, the average period of time for people held in detention facilities was 502 days.

Figure 5 – Average Number of Days of People in Held Immigration Detention Facilities only

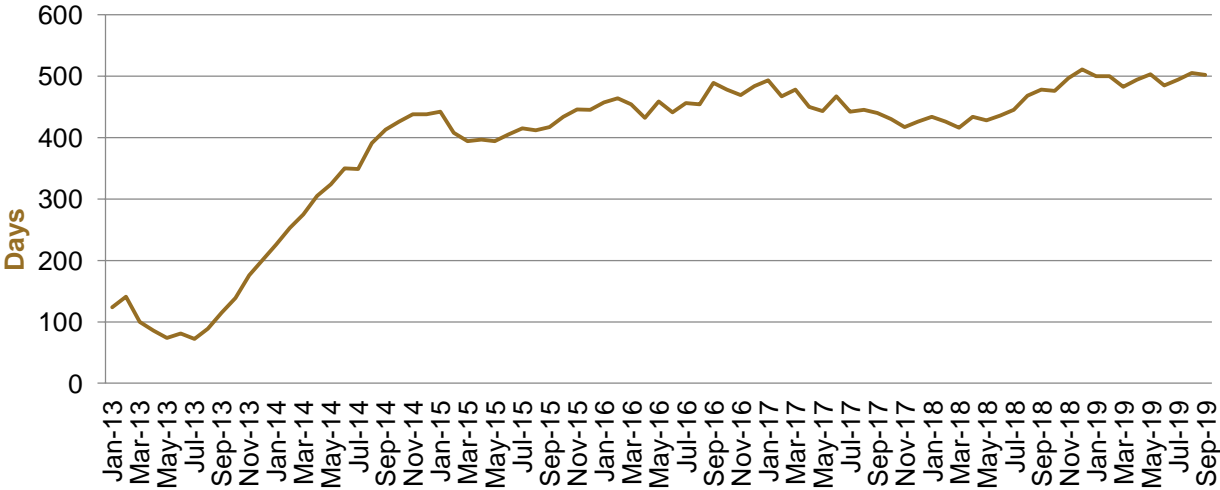


Figure 5 above, shows the average days in held immigration detention at the end of each month from January 2013 to the date of this report. The average period of time for people held in detention facilities steadily increased from July 2013 to January 2015.

Time In Community Under Residence Determination

Of the 843 people in the community under residence determination, as at 30 September 2019, 7.6 per cent had been in the community for 91 days or less and 49.6 per cent had been in the community for 365 days or less.

Table 9 – Length of Time of People in Community under Residence Determination at 30 September 2019

Period Detained	Total	% of Total
7 days or less	<5	0.1%
8 days - 31 days	21	2.5%
32 days - 91 days	42	5.0%
92 days - 182 days	55	6.5%
183 days - 365 days	299	35.5%
366 days - 547 days	96	11.4%
548 days - 730 days	30	3.6%
Greater than 730 days	299	35.5%
Total	843	100%