



Australian Government  
Department of Home Affairs



Australian  
**BORDER FORCE**

# Immigration Detention and Community Statistics Summary

30 November 2020

# Table of Contents

About this report.....	3
Enquiries.....	3
Acronyms.....	3
Important Notice on APODs.....	3
Immigration Detention And Community Statistics Summary.....	3
In Community under Residence Determination Population By State/Territory.....	5
Immigration Detention Population.....	6
From 1990 to Current.....	6
People In Immigration Detention Facilities.....	7
Arrival Type.....	7
People In Immigration Detention.....	8
Nationality.....	9
Children In Immigration Detention.....	9
Time In Immigration Detention Facilities.....	12
Time In Community Under Residence Determination.....	13

## About this report

This report provides an overview of the number of people in onshore immigration detention as at midnight on the date of the report. The report is produced on a monthly basis.

As data is sourced from several departmental processing and recording systems, data relating to the immigration detention population is dynamic and variations between monthly reports can occur. Due to these issues, data from the current financial year should always be considered provisional.

Further information about immigration detention is available at:

<https://www.homeaffairs.gov.au/research-and-statistics/statistics/visa-statistics/live/immigration-detention>

## Enquiries

Comments or enquiries concerning this report should be sent using the Department's client service feedback form quoting the name and date of the report.

See: <https://immi.homeaffairs.gov.au/help-support/contact-us>

## Acronyms

**Table 1 – Acronyms used in this document**

Acronym	Description
APOD	Alternative Place of Detention
IMA	Illegal Maritime Arrival
IDC/F	Immigration Detention Centre/Facility
IRH	Immigration Residential Housing
ITA	Immigration Transit Accommodation
S501	Section 501 of the <i>Migration Act 1958</i> (the Migration Act)
S501 Visa Cancellation	Visa cancellations based on character or related grounds

## Important Notice on APODs

From July 2020, detainees residing in APODs are reported under 'APODs' rather than under the ITA or IDC that had responsibility for their management and care. APODs include hospitals, aged-care facilities, mental health inpatient facilities, as well as hotel and apartment style accommodation. The number of individuals in APODs is provided by the State and Territory of the APODs.

# Immigration Detention And Community Statistics Summary

At 30 November 2020, there were 1518 people in immigration detention facilities, including 1289 in immigration detention on the mainland and 229 in immigration detention on Christmas Island.

Of the 1518 people in immigration detention facilities, 1127 (74.2%) have a criminal history.

A further 560 people were living in the community after being approved for a residence determination and 12,417 IMAs were living in the community after grant of a Bridging E Visa.

The table below reflects figures based on records in Department of Home Affairs systems.

**Table 2 – People in Immigration Detention Centres (IDCs), Alternative Places of Detention (APODs), Immigration Transit Accommodation (ITA) and the Community at 30 November 2020**

Place of immigration detention by State*	Men	Women	Children	Total	Change from 31/10/20
<b>NSW</b>					
Villawood IDC	435	21	0	<b>456</b>	+ 4
APODs	<10	<5	0	<b>7</b>	- 1
<b>VIC</b>					
Melbourne ITA	<210	<10	0	<b>&lt;215</b>	- 20
APODs	<80	<5	0	<b>79</b>	- 11
<b>QLD</b>					
Brisbane ITA	<100	0	0	<b>&lt;100</b>	+ 4
APODs	<105	<5	0	<b>106</b>	- 1
<b>SA</b>					
Adelaide ITA	23	0	0	<b>23</b>	+ 1
APODs	<5	0	0	<b>&lt;5</b>	+ <5
<b>WA</b>					
Yongah Hill IDC	266	0	0	<b>266</b>	+ 10
Perth IDC	14	8	0	<b>22</b>	+ 3
APODs	<5	0	0	<b>&lt;5</b>	0
North West Point IDC	225	0	0	<b>225</b>	+ 5
Christmas Island APODs	<5	<5	<5	<b>&lt;5</b>	0
<b>NT</b>					
Northern APOD	8	7	0	<b>15</b>	- 10
APODs	0	0	0	<b>0</b>	0
<b>Total IDCs</b>	<b>940</b>	<b>29</b>	<b>0</b>	<b>969</b>	<b>+ 22</b>
<b>Total APODs</b>	<b>&lt;205</b>	<b>&lt;15</b>	<b>&lt;5</b>	<b>216</b>	<b>- &lt;25</b>
<b>Total ITAs</b>	<b>&lt;330</b>	<b>&lt;10</b>	<b>0</b>	<b>333</b>	<b>- 15</b>
<b>Total IDCs/APODs/ITAs</b>	<b>1,467</b>	<b>&lt;50</b>	<b>&lt;5</b>	<b>1,518</b>	<b>- 15</b>
<b>Total in Community under Residence Determination</b>	<b>201</b>	<b>173</b>	<b>186</b>	<b>560</b>	<b>+ 19</b>
<b>Total IMAs in Community on Bridging Visa E (Including people in a re-grant process)</b>	<b>8,991</b>	<b>1,520</b>	<b>1,906</b>	<b>12,417</b>	<b>- 105</b>

\* Refer to Important Notice on APODs on page 3.

Detention Group	Men	Women	Children	Total	Change from 31/10/20
S501 Visa Cancellation	695	23	0	<b>718</b>	+ 18
Illegal Maritime Arrival	475	<15	<5	<b>491</b>	- 26
Other	297	12	0	<b>309</b>	- 7
<b>Total</b>	<b>1,467</b>	<b>&lt;50</b>	<b>&lt;5</b>	<b>1,518</b>	<b>- 15</b>

## In Community under Residence Determination Population By State/Territory

Of the 560 people approved for a residence determination to live in the community, 46.8 per cent were in Victoria, 32.3 per cent in Queensland, 16.3 per cent in New South Wales, 3.0 per cent in South Australia, 1.6 per cent in Western Australia.

**Table 3 – People in the Community under Residence Determination by State/Territory at 30 November 2020**

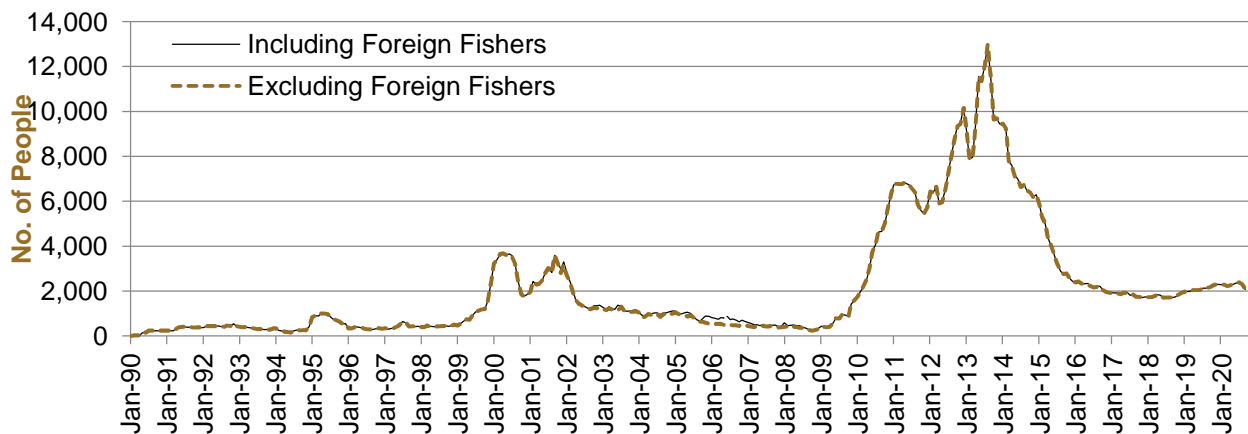
State/Territory	Men	Women	Children	Total
New South Wales	34	34	23	<b>91</b>
Victoria	95	78	89	<b>262</b>
Queensland	60	52	69	<b>181</b>
South Australia	<10	<5	<5	<b>17</b>
Western Australia	<5	<5	<5	<b>9</b>
<b>Total</b>	<b>201</b>	<b>173</b>	<b>186</b>	<b>560</b>

# Immigration Detention Population

## From January 1990 to Current

The overall number of people in immigration detention including in the community under residence determination has decreased by 210 to 2078 compared with 2288 at the end of November 2019. This number takes into account releases of detainees into the community under residence determination and detainees who were held in immigration detention facilities as at 30 November 2020.

**Figure 1 – Population in Immigration Detention**



**Figure 1** above, shows the number of people in immigration detention from 1990 to the date of this report.

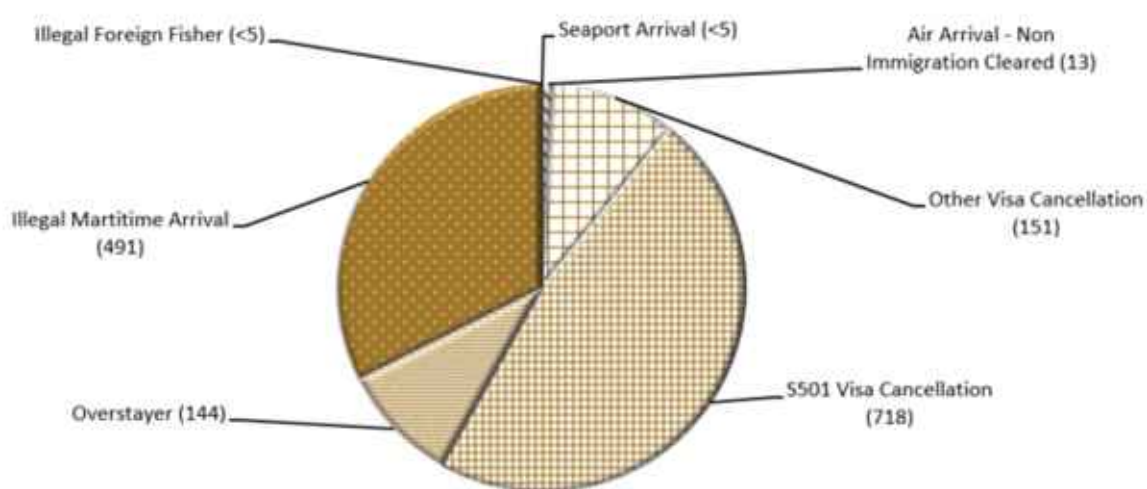
# People In Immigration Detention Facilities

## Arrival Type

There were 505 people who arrived unlawfully by air or boat, in held immigration detention facilities at 30 November 2020 representing 33.3 per cent of the total immigration detention population.

There were also 1013 people (66.7 per cent of the total immigration population) who arrived in Australia lawfully and were subsequently taken into immigration detention for either overstaying or having their visas cancelled for breaching visa conditions.

**Figure 2 – People in Held Immigration Detention Facilities by Detention Group**



**Figure 2** above, shows the number of people in held immigration detention facilities by detention group, including Overstayers, S501 and Other Visa Cancellations, Illegal Maritime Arrivals, Unauthorised Air Arrivals, and if applicable – Illegal Foreign Fishers and Others such as stowaways and ship deserters.

**Table 4 – People in Held Immigration Detention Facilities by Detention Group at 30 November 2020**

Place of immigration detention by State*	S501 Visa Cancellation	IMA	Other Detention Group	Total	Change from 31/10/20
<b>NSW</b>					
Villawood IDC	258	76	122	<b>456</b>	+ 4
APODs	<5	<5	<5	<b>7</b>	- 1
<b>VIC</b>					
Melbourne ITA	<80	<90	50	<b>&lt;215</b>	- 20
APODs	<5	73	<5	<b>79</b>	- 11
<b>QLD</b>					
Brisbane ITA	<55	<40	10	<b>&lt;100</b>	+ 4
APODs	<15	92	<5	<b>106</b>	- 1
<b>SA</b>					
Adelaide ITA	<5	14	<10	<b>23</b>	+ 1
APODs	<5	0	0	<b>&lt;5</b>	+ <1
<b>WA</b>					
Yongah Hill IDC	128	78	60	<b>266</b>	+ 10
Perth IDC	12	<5	<10	<b>22</b>	+ 3
APODs	<5	<5	0	<b>&lt;5</b>	0
North West Point IDC	165	11	49	<b>225</b>	+ 5
Christmas Island APODs	0	<5	0	<b>&lt;5</b>	0
<b>NT</b>					
Northern APOD	0	15	0	<b>15</b>	- 10
APODs	0	0	0	<b>0</b>	0
<b>Total IDCs</b>	<b>563</b>	<b>169</b>	<b>237</b>	<b>969</b>	<b>+ 22</b>
<b>Total APODs</b>	<b>&lt;25</b>	<b>186</b>	<b>7</b>	<b>216</b>	<b>- &lt;25</b>
<b>Total ITAs</b>	<b>&lt;135</b>	<b>136</b>	<b>65</b>	<b>333</b>	<b>- &lt;20</b>
<b>Total IDCs/APODs/ITAs</b>	<b>718</b>	<b>491</b>	<b>309</b>	<b>1,518</b>	<b>- 15</b>

\* Refer to Important Notice on APODs on page 3.



# People In Immigration Detention

## Nationality

At 30 November 2020, there were 1518 people in held immigration detention facilities. Of these 1518 people, 14.4 per cent were from Iran, 12.3 per cent were from New Zealand, 5.5 per cent were from Vietnam, 5.5 per cent were from Sudan and 5.1 per cent were from Sri Lanka.

**Table 5 – People in Held Immigration Detention Facilities by Nationality at 30 November 2020**

Nationalities	Men	Women	Children	Total
Iran	208	11	0	<b>219</b>
New Zealand	173	14	0	<b>187</b>
Sudan	<85	<5	0	<b>84</b>
Vietnam	76	8	0	<b>84</b>
Sri Lanka	73	<5	<5	<b>77</b>
Iraq	74	0	0	<b>74</b>
United Kingdom	<70	<5	0	<b>68</b>
India	67	0	0	<b>67</b>
Afghanistan	55	0	0	<b>55</b>
Pakistan	45	0	0	<b>45</b>
Other	549	9	0	<b>558</b>
<b>Total</b>	<b>1,467</b>	<b>&lt;50</b>	<b>&lt;5</b>	<b>1,518</b>

At 30 November 2020, 560 were people living in the community after being approved for a residence determination. Of these 560 people, 52.3 per cent were from Iran, 11.3 per cent were from Sri Lanka, 11.1 percent were Stateless, 9.8 per cent were from Somalia and 2.1 per cent were from Pakistan.

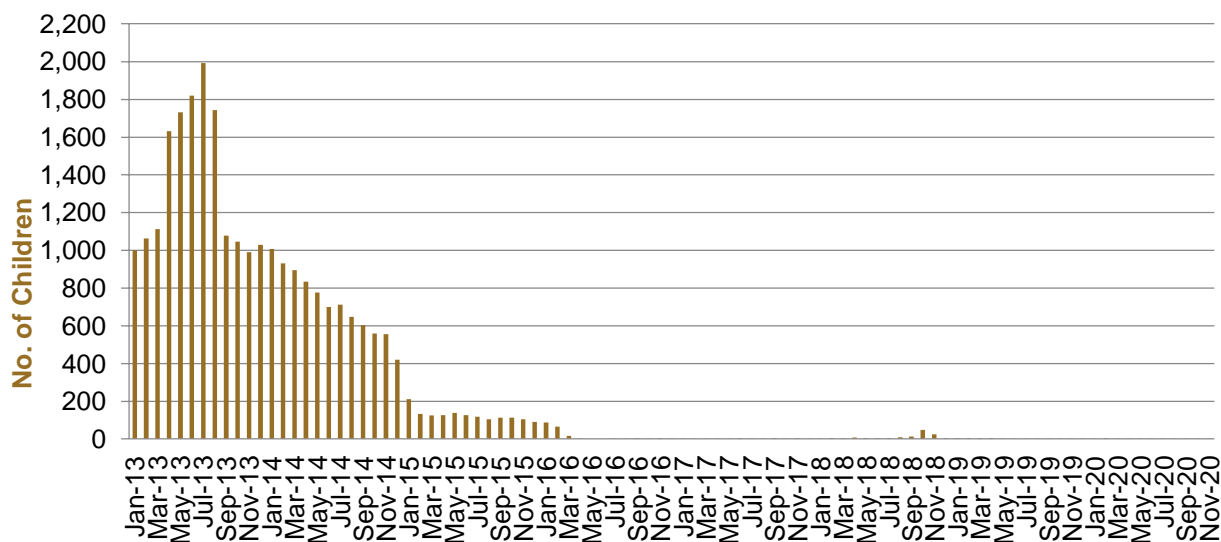
**Table 6 – People in the Community under Residence Determination by Nationality at 30 November 2020**

Nationalities	Men	Women	Children	Total
Iran	91	103	99	<b>293</b>
Sri Lanka	24	15	24	<b>63</b>
Stateless	28	13	21	<b>62</b>
Somalia	18	20	17	<b>55</b>
Pakistan	<15	<5	<5	<b>12</b>
Other	<35	<25	<25	<b>75</b>
<b>Total</b>	<b>201</b>	<b>173</b>	<b>186</b>	<b>560</b>

# Children In Immigration Detention

At 30 November 2020 there were less than five children (aged less than 18 years) in Immigration Residential Housing, Immigration Transit Accommodation and Alternative Places of Detention.

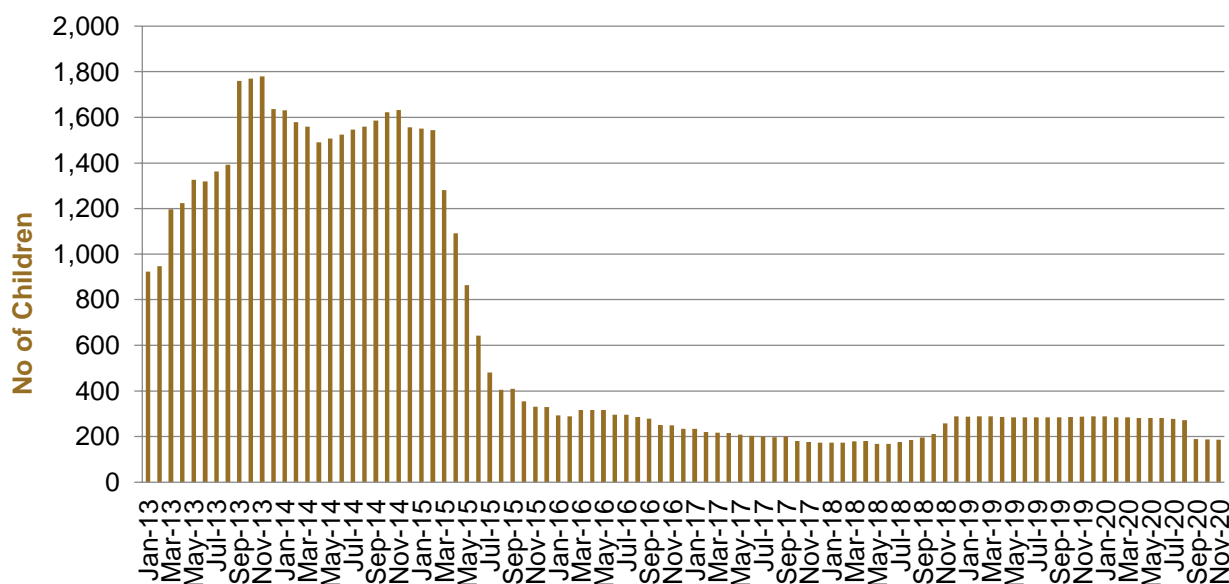
**Figure 3 – Children in Immigration Residential Housing, Immigration Transit Accommodation and Alternative Places of Detention**



**Figure 3** above, shows the number of children in Immigration Detention Facilities and Alternative Places of Detention from January 2013 to the date of this report. The continuous increase in the number of children in detention facilities from April 2013 to Aug 2013 was due to a rapid increase in illegal maritime arrivals during this period. The number of children in immigration detention facilities decreased in September 2013, as children completed mandatory processing and were transferred into the community. The number of children in detention facilities continued to decline during the late 2013 and 2014, with further reduction in January 2015. The increase in the number of children in alternative places of detention from August 2018 was following transfers from Nauru to Australia (with family members).

At 30 November 2020, the number of children living in the community after being approved for a residence determination has decreased by one to 186 from 187 in the previous report.

**Figure 4 – Children in the Community under Residence Determination**



**Figure 4** above, shows the number of children in the community under residence determination from January 2012 to the date of this report. The number of children in the community under residence determination, has levelled off at its lowest number since the peak in November 2013, as a result of releases into the community on Bridging E visas.

**Table 7 – Children in Immigration Detention and IMA Children in the Community on a Bridging E Visa at 30 November 2020**

Placement Type	Children
Immigration Residential Housing	0
Immigration Transit Accommodation	0
Alternative Places of Detention	<5
<b>Total Facility</b>	<b>&lt;5</b>
<b>Total in the Community under a Residence Determination</b>	<b>186</b>
<b>Total IMAs in the Community on a Bridging E visa (including in re-grant process)</b>	<b>1,906</b>

# Time In Immigration Detention Facilities

At 30 November 2020, there were 1518 people in immigration detention facilities.

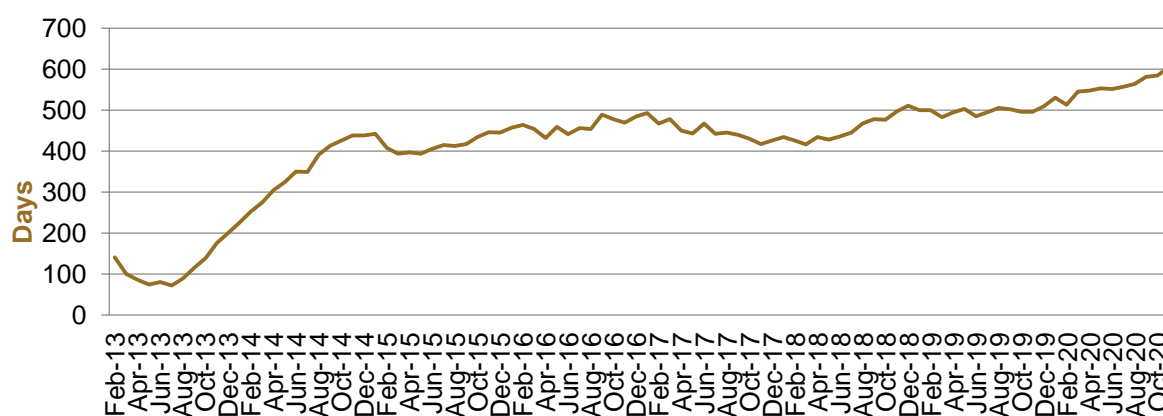
Of these 1518 people, 15.9 per cent had been detained for 91 days or less and 44 per cent had been detained for 365 days or less.

**Table 8 – Length of Time of People in Held Immigration Detention Facilities at 30 November 2020**

Period Detained	Total	% of Total
7 days or less	39	2.6%
8 days - 31 days	78	5.1%
32 days - 91 days	125	8.2%
92 days - 182 days	169	11.1%
183 days - 365 days	257	16.9%
366 days - 547 days	326	21.5%
548 days - 730 days	117	7.7%
731 days - 1095 days	174	11.5%
1096 days - 1460 days	92	6.1%
1461 days - 1825 days	40	2.6%
Greater than 1825 days	101	6.7%
<b>Total</b>	<b>1,518</b>	<b>100%</b>

At 30 November 2020, the average period of time for people held in detention facilities was 604 days.

**Figure 5 – Average Number of Days of People in Held Immigration Detention Facilities only**



**Figure 5** above, shows the average days in held immigration detention at the end of each month from January 2013 to the date of this report. The average period of time for people held in detention facilities steadily increased from July 2013 to January 2015. Between November 2018 and December 2019 the average number of days remained around 500. Since January 2020 the average period of time for people held in detention facilities has steadily increased.

The time an individual spends in immigration detention depends on a range of factors, including the complexity of their case, the legal processes they pursue and whether they voluntarily choose to leave Australia.

## Time In Community Under Residence Determination

Of the 560 people in the community under residence determination, as at 30 November 2020, 4.5 per cent had been in the community for 91 days or less and less than 7.0 per cent had been in the community for 365 days or less.

**Table 9 – Length of Time of People in Community under Residence Determination at 30 November 2020**

Period Detained	Total	% of Total
7 days or less	9	1.6%
8 days - 31 days	16	2.9%
32 days - 91 days	0	0.0%
92 days - 182 days	<5	<0.9%
183 days - 365 days	10	1.8%
366 days - 547 days	43	7.7%
548 days - 730 days	103	18.4%
731 days - 1095 days	172	30.7%
1096 days - 1460 days	45	8.0%
1461 days - 1825 days	137	24.5%
Greater than 1825 days	<25	<5.0%
<b>Total</b>	<b>560</b>	<b>100%</b>