



Australian Government
Department of Home Affairs



Australian
BORDER FORCE

Immigration Detention and Community Statistics Summary

30 June 2020

Table of Contents

About this report.....	3
Enquiries.....	3
Acronyms.....	3
Important Notice on APODs.....	3
Immigration Detention And Community Statistics Summary.....	3
In Community under Residence Determination Population By State/Territory.....	5
Immigration Detention Population.....	5
From 1990 to Current.....	6
People In Immigration Detention Facilities.....	7
Arrival Type.....	7
People In Immigration Detention.....	7
Nationality.....	8
Children In Immigration Detention.....	9
Time In Immigration Detention Facilities.....	11
Time In Community Under Residence Determination.....	12

About this report

This report provides an overview of the number of people in immigration detention and Regional Processing Centres as at midnight on the date of the report. The report is produced on a monthly basis.

Data is sourced from several departmental processing and recording systems. Data relating to the immigration detention population is dynamic and there can be delays in transmission of information from the Department's immigration detention network operations. Variations in figures between this report and previous issues can occur. Due to these issues, data from the current financial year should always be considered provisional.

Further information about immigration detention is available at:

<https://www.homeaffairs.gov.au/research-and-statistics/statistics/visa-statistics/live/immigration-detention>

Enquiries

Comments or enquiries concerning this report should be sent using the Department's client service feedback form quoting the name and date of the report.

See: <https://immi.homeaffairs.gov.au/help-support/contact-us>

Acronyms

Table 1 – Acronyms used in this document

Acronym	Description
APOD	Alternative Places of Detention
IMA	Illegal Maritime Arrival
IDC/F	Immigration Detention Centre/Facility
IRH	Immigration Residential Housing
ITA	Immigration Transit Accommodation
RPC	Regional Processing Centre
S501	Section 501 of the Migration Act 1958 (the Migration Act)
S501 Visa Cancellation	Visa cancellations based on character or related grounds

Important Notice on APODs

From July 2020 and in response to feedback, detainees in APODs will be reported under 'APODs' rather than under the ITA or IDC that had responsibility for their management and care. APODs include hospitals, aged-care facilities, mental health inpatient facilities, as well as hotel and apartment style accommodation.

Immigration Detention And Community Statistics Summary

At 30 June 2020, there were 1523 people in immigration detention facilities, including 1519 in immigration detention on the mainland and less than five in immigration detention on Christmas Island.

A further 838 people were living in the community after being approved for a residence determination and 12,450 IMAs were living in the community after grant of a Bridging E Visa.

The table below reflects figures based on records in Department of Home Affairs systems.

Table 2 – People in Immigration Detention Facilities (IDFs), Alternative Places of Detention (APODs), Regional Processing Centres (RPCs) and the Community at 30 June 2020

Place of immigration detention	Men	Women	Children	Total	Change from Previous Summary 31/05/20
Perth IDC	17	10	0	27	+ 5
Villawood IDC	476	26	0	502	+ 30
Yongah Hill IDC	389	0	0	389	+ 20
Christmas Island APODs	<5	<5	<5	<5	0
Mainland APODs	8	7	0	15	- 1
Total IDCs/APODs	891	44	<5	937	+ 54
Adelaide ITA	24	0	0	24	0
Brisbane ITA	216	5	0	221	+ 9
Melbourne ITA	328	13	0	341	+ 2
Total in IRH and ITA	568	18	0	586	+ 11
Total in IDC/F	1,459	62	<5	1,523	+ 65
Total in Community under Residence Determination	297	259	282	838	- 5
Total IMAs in Community on Bridging Visa E (Including people in a re-grant process)	9,064	1,463	1,923	12,450	- 95
Total RPCs	0	0	0	0	0
Detention Group					
S501 Visa Cancellation	676	27	0	703	+ 28
Illegal Maritime Arrival	489	14	<5	505	0
Other	294	21	0	315	+ 37
Total	1,459	62	<5	1,523	+ 65

In Community under Residence Determination Population By State/Territory

Of the 838 people approved for a residence determination to live in the community, 35 per cent were in Queensland, 31.7 per cent in Victoria, 19.7 per cent in New South Wales, 9.9 per cent in South Australia, 3.7 per cent in Western Australia.

Table 3 – People in the Community under Residence Determination by State/Territory at 30 June 2020

State/Territory	Adult Male	Adult Female	Children Female and Male (<18 years)	Total
Queensland	106	85	102	293
Victoria	94	78	94	266
New South Wales	56	64	45	165
South Australia	27	24	32	83
Western Australia	14	8	9	31
Total	297	259	282	838

Immigration Detention Population

From January 1990 to Current

The overall number of people in immigration detention including in the community under residence determination has increased by 228 to 2361 compared with 2133 at the end of June 2019. This number takes into account releases of detainees into the community under residence determination and detainees who were held in immigration detention facilities as at 30 June 2020.

Figure 1 – Population in Immigration Detention

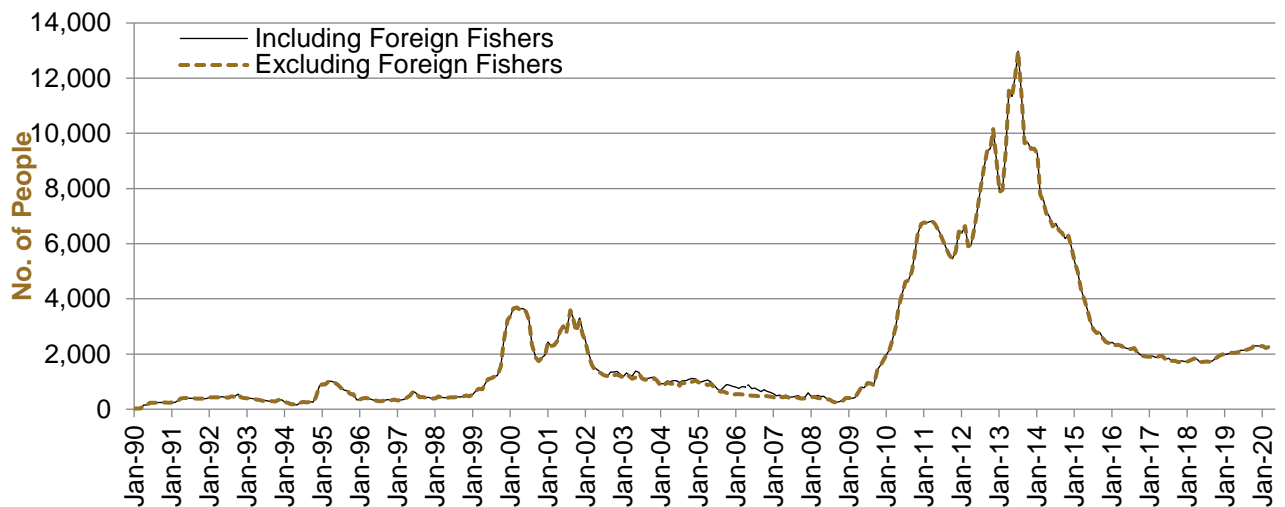


Figure 1 above, shows the number of people in immigration detention from 1990 to the date of this report.

People in Immigration Detention Facilities

Arrival Type

There were 528 people who arrived unlawfully by air or boat, in held immigration detention facilities at 30 June 2020 representing 34.7 per cent of the total immigration detention population.

There were also 995 people (65.3 per cent of the total immigration population) who arrived in Australia lawfully and were subsequently taken into immigration detention for either overstaying or having their visas cancelled for breaching visa conditions.

Figure 2 – People in Held Immigration Detention Facilities by Detention Group

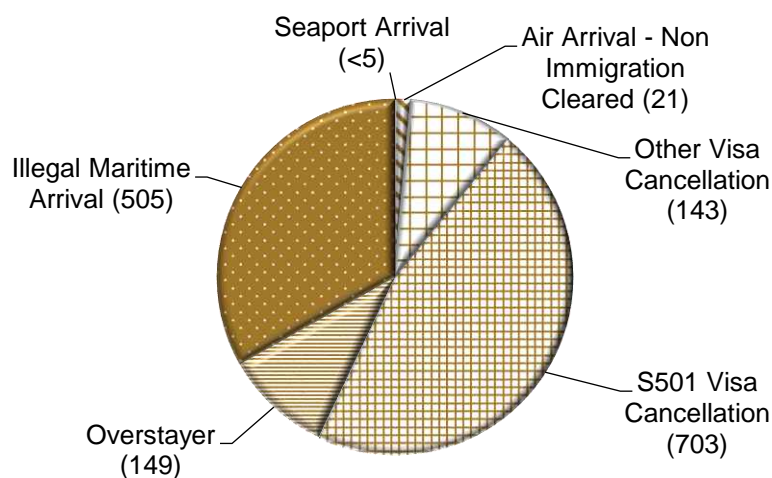


Figure 2 above, shows the number of people in held immigration detention facilities by detention group, including Overstayers, S501 and Other Visa Cancellations, Illegal Maritime Arrivals, Unauthorised Air Arrivals, and if applicable – Inadequately Documented Crew Members and Others such as stowaways and ship deserters.

Table 4 – People in Held Immigration Detention Facilities by Detention Group at 30 June 2020

Place of immigration detention	S501 Visa Cancellation	IMA	Other Detention Group	Total	Change from Previous Summary 31/05/20
Perth IDC	13	6	8	27	+ 5
Villawood IDC	293	85	124	502	+ 30
Yongah Hill IDC	226	89	74	389	+ 20
Christmas Island APODs	0	<5	0	<5	0
Mainland APODs	0	15	0	15	- 1
Total IDCs/APODs	532	199	206	937	+ 54
Adelaide ITA	6	12	6	24	0
Brisbane ITA	71	125	25	221	+ 9
Melbourne ITA	94	169	78	341	+ 2
Total in IRH and ITA	171	306	109	586	+ 11
Total in IDC/F	703	505	315	1,523	+ 65

People in Immigration Detention

Nationality

At 30 June 2020, there were 1523 people in held immigration detention facilities. Of these 1523 people, 15.2 per cent were from New Zealand, 14.4 per cent were from Iran, 6.4 per cent were from Vietnam, 5.8 per cent were from Sudan and 5.3 from Sri Lanka.

Table 5 – People in Held Immigration Detention Facilities by Nationality at 30 June 2020

Nationalities	Adult Male	Adult Female	Child Male (<18 years)	Child Female (<18 years)	Total
New Zealand	218	14	0	0	232
Iran	208	11	0	0	219
Vietnam	87	10	0	0	97
Sudan	>85	<5	0	0	89
Sri Lanka	>70	<5	0	<5	80
Iraq	76	0	0	0	76
India	58	0	0	0	58
United Kingdom	>50	<5	0	0	58
Afghanistan	56	0	0	0	56
Pakistan	44	0	0	0	44
Other	496	18	0	0	514
Total	1,459	62	0	<5	1,523

At 30 June 2020, 838 were people living in the community after being approved for a residence determination. Of these 838 people, 50.7 per cent were from Iran, 12.8 per cent were from Stateless, 10.9 per cent were from Sri Lanka, 8.5 per cent were from Somalia and 3.5 per cent were from Iraq.

Table 6 – People in the Community under Residence Determination by Nationality at 30 June 2020

Nationalities	Adult Male	Adult Female	Child Male (<18 years)	Child Female (<18 years)	Total
Iran	141	147	76	61	425
Stateless	39	30	16	22	107
Sri Lanka	32	21	20	18	91
Somalia	20	28	14	9	71
Iraq	20	<5	<5	<5	29
Other	45	>25	>20	>15	115
Total	297	259	154	128	838

Children in Immigration Detention

At 30 June 2020 there were less than five children (aged less than 18 years) in Immigration Residential Housing, Immigration Transit Accommodation and Alternative Places of Detention.

Figure 3 – Children in Immigration Residential Housing, Immigration Transit Accommodation and Alternative Places of Detention

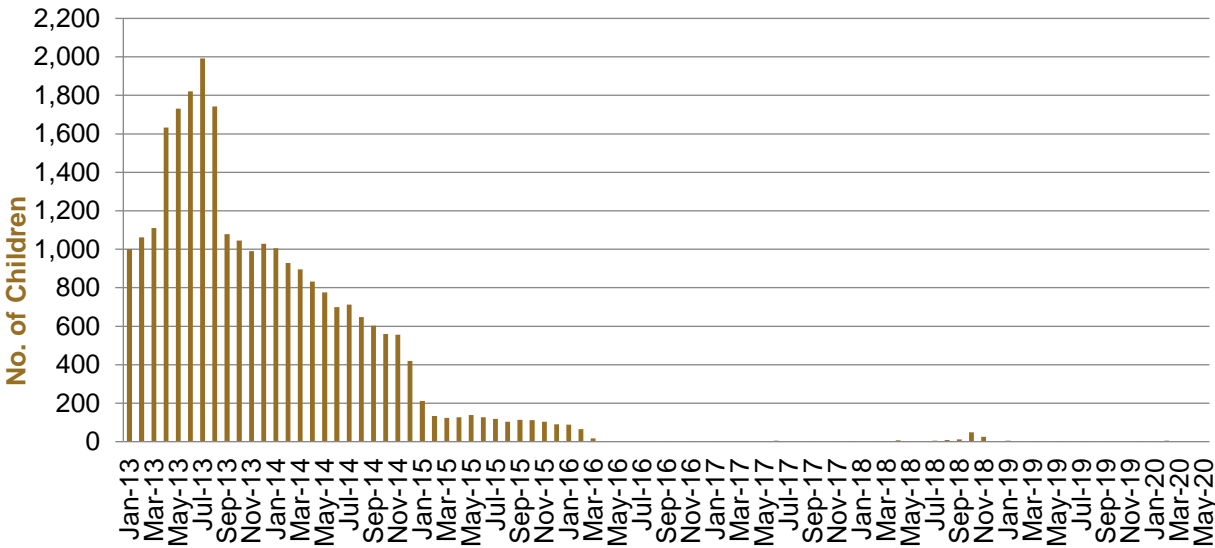


Figure 3 above, shows the number of children in Immigration Detention Facilities and Alternative Places of Detention from January 2013 to the date of this report. The continuous increase in the number of children in detention facilities from April 2013 to Aug 2013 was due to a rapid increase in illegal maritime arrivals during this period. The number of children in immigration detention facilities decreased in September 2013, as children completed mandatory processing and were transferred into the community. The number of children in detention facilities continued to decline during the late 2013 and 2014, with further reduction in January 2015. The increase in the number of children in alternative places of detention from August 2018 was following transfers from Nauru to Australia (with family members).

At 30 June 2020, the number of children living in the community after being approved for a residence determination has remained the same at 282 in the previous report.

Figure 4 – Children in the Community under Residence Determination

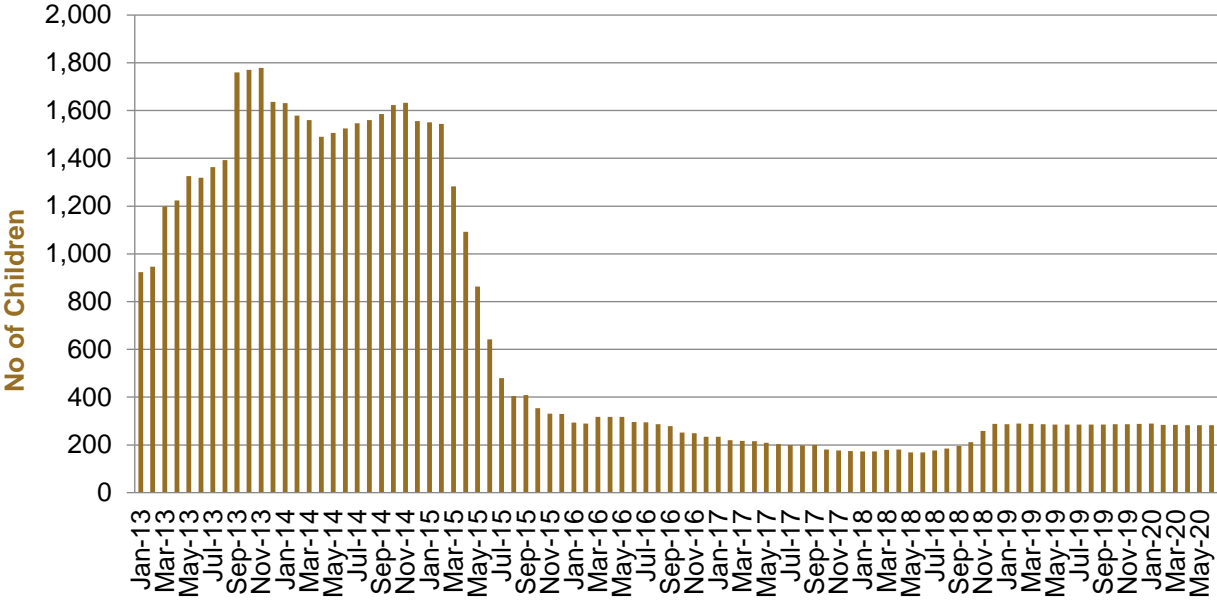


Figure 4 above, shows the number of children in the community under residence determination from January 2012 to the date of this report. The number of children in the community under residence determination, has levelled off at its lowest number since the peak in November 2013, as a result of releases into the community on Bridging E visas.

Table 7 – Children in Immigration Detention and IMA Children in the Community on a Bridging E Visa at 30 June 2020

Placement Type	Children
Immigration Residential Housing	0
Immigration Transit Accommodation	0
Alternative Places of Detention	<5
Total Facility	<5
Total in the Community under a Residence Determination	282
Total IMAs in the Community on a Bridging E visa (including in re-grant process)	1,923

Time in Immigration Detention Facilities

At 30 June 2020, there were 1523 people in immigration detention facilities.

Of these 1523 people, 17.8 per cent had been detained for 91 days or less and 57.5 per cent had been detained for 365 days or less.

Table 8 – Length of Time of People in Held Immigration Detention Facilities at 30 June 2020

Period Detained	Total	% of Total
7 days or less	26	1.7%
8 days - 31 days	84	5.5%
32 days - 91 days	161	10.6%
92 days - 182 days	211	13.9%
183 days - 365 days	393	25.8%
366 days - 547 days	149	9.8%
548 days - 730 days	110	7.2%
Greater than 730 days	389	25.5%
Total	1,523	100%

At 30 June 2020, the average period of time for people held in detention facilities was 551 days.

Figure 5 – Average Number of Days of People in Held Immigration Detention Facilities only

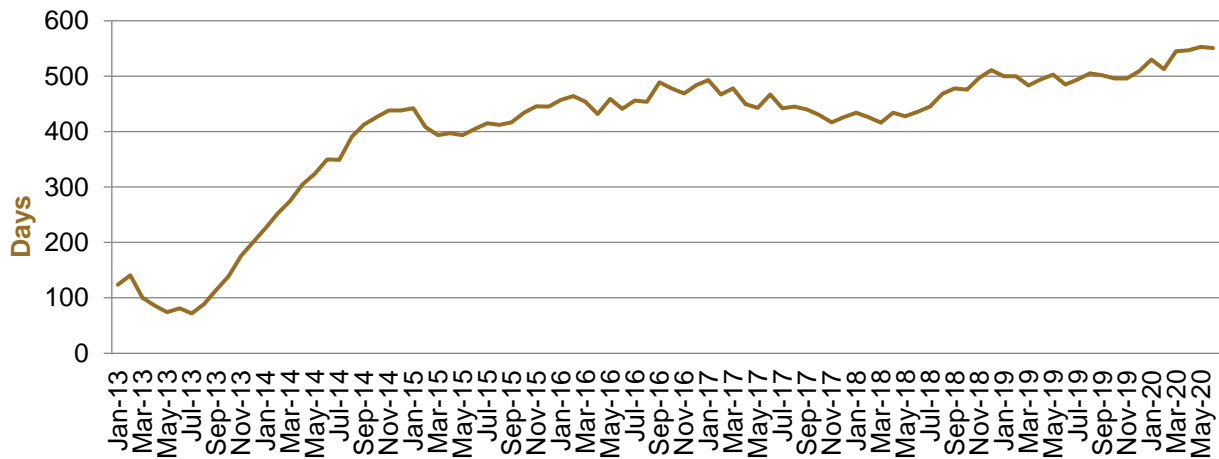


Figure 5 above, shows the average days in held immigration detention at the end of each month from January 2013 to the date of this report. The average period of time for people held in detention facilities steadily increased from July 2013 to January 2015. Since November 2018 the average number of days has remained around 500.

Time in Community Under Residence Determination

Of the 838 people in the community under residence determination, as at 30 June 2020, less than 1 per cent had been in the community for 91 days or less and 11.6 per cent had been in the community for 365 days or less.

Table 9 – Length of Time of People in Community under Residence Determination at 30 June 2020

Period Detained	Total	% of Total
7 days or less	<5	<0.6%
8 days - 31 days	<5	<0.6%
32 days - 91 days	<5	<0.6%
92 days - 182 days	9	1.1%
183 days - 365 days	84	10.0%
366 days - 547 days	84	10.0%
548 days - 730 days	319	38.1%
Greater than 730 days	338	40.3%
Total	838	100%