



Australian Government
Department of Home Affairs



Australian
BORDER FORCE

Immigration Detention and Community Statistics Summary

30 June 2019

Table of Contents

About this report.....	3
Enquiries.....	3
Acronyms.....	3
Immigration Detention And Community Statistics Summary.....	4
In Community under Residence Determination Population By State/Territory.....	5
Immigration Detention Population.....	6
From 1990 to 30 June 2019.....	6
People In Immigration Detention Facilities.....	7
Arrival Type.....	7
People In Immigration Detention.....	7
Nationality.....	8
Children In Immigration Detention.....	9
Time In Immigration Detention Facilities.....	11
Time In Community Under Residence Determination.....	12

About this report

This report provides an overview of the number of people in immigration detention and Regional Processing Centres as at midnight on the date of the report. The report is produced on a monthly basis.

Data is sourced from several departmental processing and recording systems. Data relating to the immigration detention population is dynamic and there can be delays in transmission of information from the Department's immigration detention network operations. Variations in figures between this report and previous issues can occur. Due to these issues, data from the current financial year should always be considered provisional.

Further information about immigration detention is available at:

<https://www.homeaffairs.gov.au/research-and-statistics/statistics/visa-statistics/live/immigration-detention>

Enquiries

Comments or enquiries concerning this report should be sent using the Department's client service feedback form quoting the name and date of the report.

See: <https://immi.homeaffairs.gov.au/help-support/contact-us>

Acronyms

Table 1 – Acronyms used in this document

Acronym	Description
APOD	Alternative Place of Detention
IMA	Illegal Maritime Arrival
IDC/F	Immigration Detention Centre/Facility
IRH	Immigration Residential Housing
ITA	Immigration Transit Accommodation
RPC	Regional Processing Centre
S501	Section 501 of the <i>Migration Act 1958</i> (the Migration Act)
S501 Visa Cancellation	Visa cancellations based on character or related grounds

Immigration Detention And Community Statistics Summary

At 30 June 2019, there were 1352 people in immigration detention facilities.

A further 781 people were living in the community after being approved for a residence determination and 14,507 were living in the community after grant of a Bridging Visa E.

The table below reflects figures based on records in Department of Home Affairs systems.

Table 2 – People in Immigration Detention Facilities (IDFs), Alternative Places of Detention (APODs), Regional Processing Centres (RPCs) and the Community at 30 June 2019

Place of immigration detention	Men	Women	Children	Total	Change from Previous Summary 31/05/19
Perth IDC	17	6	0	23	+ 8
Villawood IDC	480	43	0	523	+ 39
Yongah Hill IDC	333	0	0	333	+ 6
Mainland APODs	15	17	<5	34	+ 7
Total IDCs/APODs	845	66	<5	913	+ 60
Adelaide ITA	20	6	0	26	- 1
Brisbane ITA	152	13	0	165	+ 6
Melbourne ITA	237	10	<5	248	+ 17
Total in IRH and ITA	409	29	<5	439	+ 22
Total Facility	1,254	95	<5	1,352	+ 82
Total Community under Residence Determination	263	233	285	781	- 1
Total Community on Bridging Visa E (Including people in a re-grant process)	10,485	1,735	2,287	14,507	- 121
Total RPCs	0	0	0	0	0
Detention Group					
S501 Visa Cancellation	338	15	0	353	- 6
Illegal Maritime Arrival	355	37	<5	394	+ 16
Other	561	43	<5	605	+ 72
Total	1,254	95	<5	1,352	+ 82

In Community under Residence Determination Population By State/Territory

Of the 781 people approved for a residence determination to live in the community, 36.4 per cent were in Queensland, 30.2 per cent in Victoria, 18.6 per cent in New South Wales, 11.4 per cent in South Australia, 3.5 per cent in Western Australia.

Table 3 – People in the Community under Residence Determination by State/Territory at 30 June 2019

State/Territory	Adult Male	Adult Female	Child Male (<18 years)	Child Female (<18 years)	Total
Queensland	102	82	56	44	284
Victoria	79	65	52	40	236
New South Wales	45	54	27	19	145
South Australia	24	25	19	21	89
Western Australia	13	7	<5	<5	27
Total	263	233	158	127	781

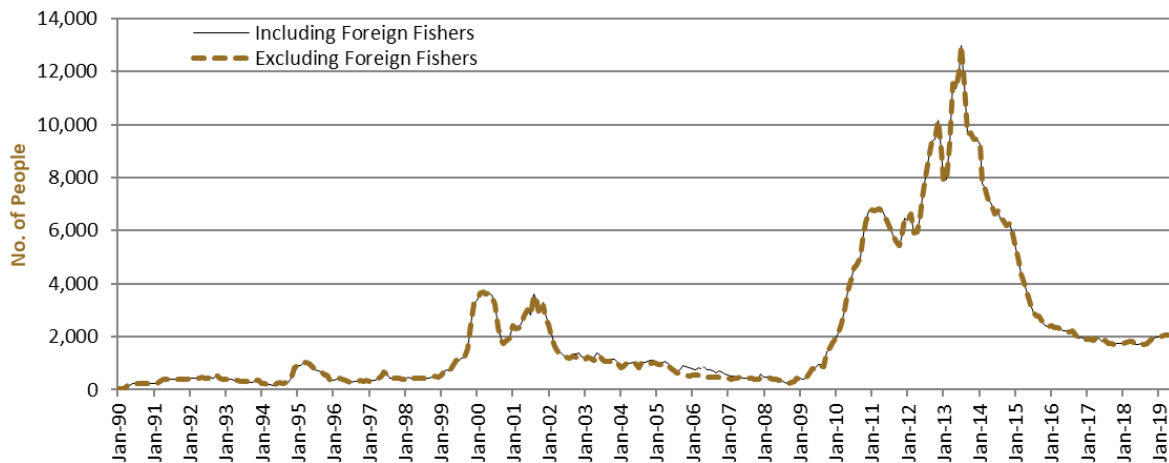
Immigration Detention Population

From January 1990 to 30 June 2019

The overall number of people in immigration detention including in the community under residence determination has increased by 418 to 2133 compared with 1715 at the end of June 2018. This number takes into account releases of detainees into the community under residence determination and detainees who were held in immigration detention facilities as at 30 June 2019.

Figure 1 – Population in Immigration Detention

Figure 1 above, shows the number of people in immigration detention from 1990 to the date of this report. The trend had a consistent rise of people in immigration detention from January 2009 to January 2013, but has since had consistent decline.



People In Immigration Detention Facilities

Arrival Type

There were 455 people who arrived unlawfully by air or boat, in held immigration detention facilities at 30 June 2019 representing 33.7 per cent of the total immigration detention population.

There were also 897 people (66.3 per cent of the total immigration population) who arrived in Australia lawfully and were subsequently taken into immigration detention for either overstaying or having their visas cancelled for breaching visa conditions.

Figure 2 – People in Held Immigration Detention Facilities by Detention Group

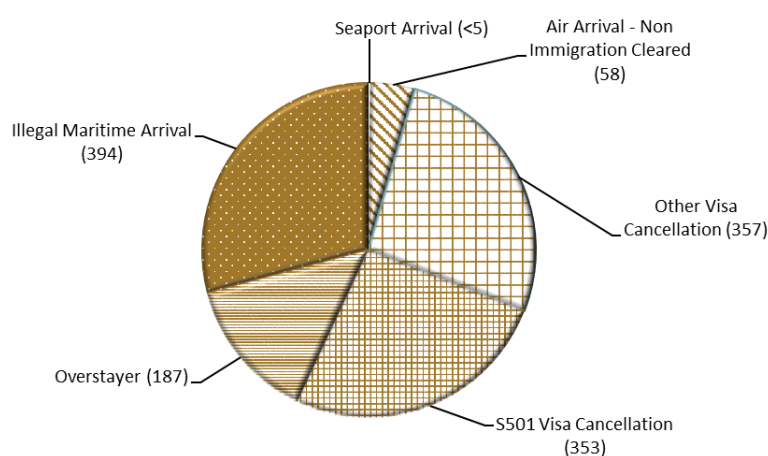


Figure 2 above, shows the number of people in held immigration detention facilities by detention group, including Overstayers, S501 and Other Visa Cancellations, Illegal Maritime Arrivals, Unauthorised Air Arrivals, and if applicable – Inadequately Documented Crew Members and Others such as stowaways and ship deserters.

Table 4 – People in Held Immigration Detention Facilities by Detention Group at 30 June 2019

Place of immigration detention	S501 Visa Cancellation	IMA	Other Detention Group	Total	Change from Previous Summary 31/05/19
Perth IDC	6	5	12	23	+ 8
Villawood IDC	146	93	284	523	+ 39
Yongah Hill IDC	136	94	103	333	+ 6
Mainland APODs	0	29	5	34	+7
Total IDCs/APODs	288	221	404	913	+ 60
Adelaide ITA	<5	14	8	26	- 1
Brisbane ITA	17	89	59	165	+ 6
Melbourne ITA	44	70	134	248	+ 17
Total in IRH and ITA	65	173	201	439	+ 22
Total in IDC/F	353	394	605	1,352	+ 82

People In Immigration Detention

Nationality

At 30 June 2019, there were 1352 people in held immigration detention facilities.

Of these 1352 people, 10.9 per cent were from Iran, 10.8 per cent were from New Zealand, 7 per cent were from Vietnam, 5.8 per cent were from Sri Lanka and 4.9 per cent were from India.

Table 5 – People in Held Immigration Detention Facilities by Nationality at 30 June 2019

Nationalities	Adult Male	Adult Female	Child Male (<18 years)	Child Female (<18 years)	Total
Iran	128	20	0	0	148
New Zealand	135	11	0	0	146
Vietnam	88	7	0	0	95
Sri Lanka	71	5	0	<5	78
India	65	<5	0	0	66
Sudan	59	<5	0	0	61
United Kingdom	57	<5	0	0	60
Iraq	55	<5	0	0	56
Stateless	47	9	0	0	56
Afghanistan	55	0	0	0	55
Other	494	36	<5	0	531
Total	1,254	95	<5	<5	1,352

At 30 June 2019, 781 were people living in the community after being approved for a residence determination. Of these 781 people, 53.6 per cent were from Iran, 11.7 per cent were from Sri Lanka, 11.3 per cent were from Stateless, 7.6 per cent were from Somalia and 2.7 per cent were from Iraq.

Table 6 – People in the Community under Residence Determination by Nationality at 30 June 2019

Nationalities	Adult Male	Adult Female	Child Male (<18 years)	Child Female (<18 years)	Total
Iran	138	137	80	64	419
Sri Lanka	31	21	22	17	91
Stateless	30	21	15	22	88
Somalia	19	24	11	5	59
Iraq	13	<5	<5	<5	21
Other	32	27	27	17	103
Total	263	233	158	127	781

Children In Immigration Detention

At 30 June 2019 there were less than five children (aged less than 18 years) in Immigration Residential Housing, Immigration Transit Accommodation and Alternative Places of Detention.

Figure 3 – Children in Immigration Residential Housing, Immigration Transit Accommodation and Alternative Places of Detention

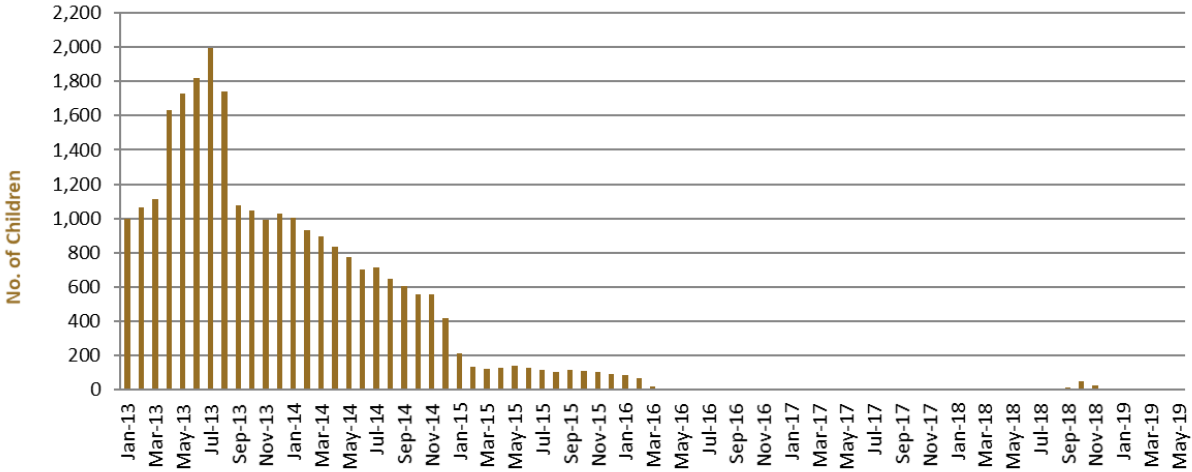


Figure 3 above, shows the number of children in immigration detention facilities and alternative places of detention from January 2013 to the date of this report. The continuous increase in the number of children in detention facilities from April 2013 to August 2013 was due to a rapid increase in illegal maritime arrivals during this period. The number of children in immigration detention facilities reduced in September 2013, as children completed mandatory processing and were transferred into the community. The number of children in detention facilities continued to decline during the late 2013 and 2014, with further reduction in January 2015. The increase in the number of children in alternative places of detention from August 2018 were following transfers from Nauru to Australia (with family members).

At 30 June 2019, the number of children living in the community after being approved for a residence determination remained the same at 285 as the previous report.

Figure 4 – Children in the Community under Residence Determination

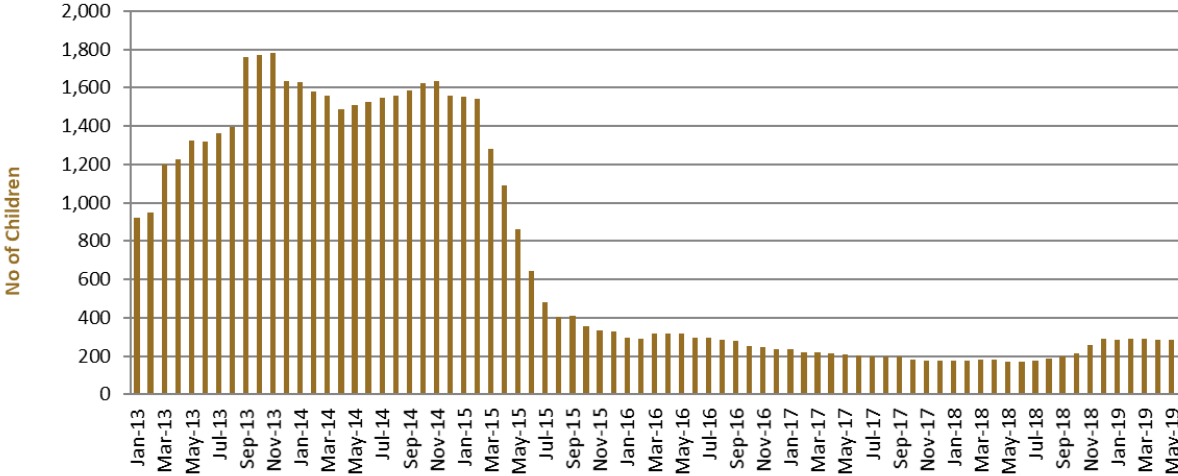


Figure 4 above, shows the number of children in the community under residence determination from January 2012 to the date of this report. The number of children in the community under residence determination, has levelled off at its lowest number since the peak in November 2013, as a result of releases into the community on Bridging E visas.

Table 7 – Children in Immigration Detention and IMA Children in the Community on a Bridging E Visa at 30 June 2019

Placement Type	Children
Immigration Residential Housing	0
Immigration Transit Accommodation	<5
Alternative Places of Detention	<5
Total Facility	<5
Total in the Community under a Residence Determination	285
Total in the Community on a Bridging E visa (including in re-grant process)	2,287

Time In Immigration Detention Facilities

At 30 June 2019, there were 1352 people in immigration detention facilities.

Of these 1352 people, 28.8 per cent had been detained for 91 days or less and 59.1 per cent had been detained for 365 days or less.

Table 8 – Length of Time of People in Held Immigration Detention Facilities at 30 June 2019

Period Detained	Total	% of Total
7 days or less	61	4.5%
8 days - 31 days	147	10.9%
32 days - 91 days	181	13.4%
92 days - 182 days	195	14.4%
183 days - 365 days	215	15.9%
366 days - 547 days	154	11.4%
548 days - 730 days	118	8.7%
Greater than 730 days	281	20.8%
Total	1,352	100%

At 30 June 2019, the average period of time for people held in detention facilities was 485 days.

Figure 5 – Average Number of Days of People in Held Immigration Detention Facilities only

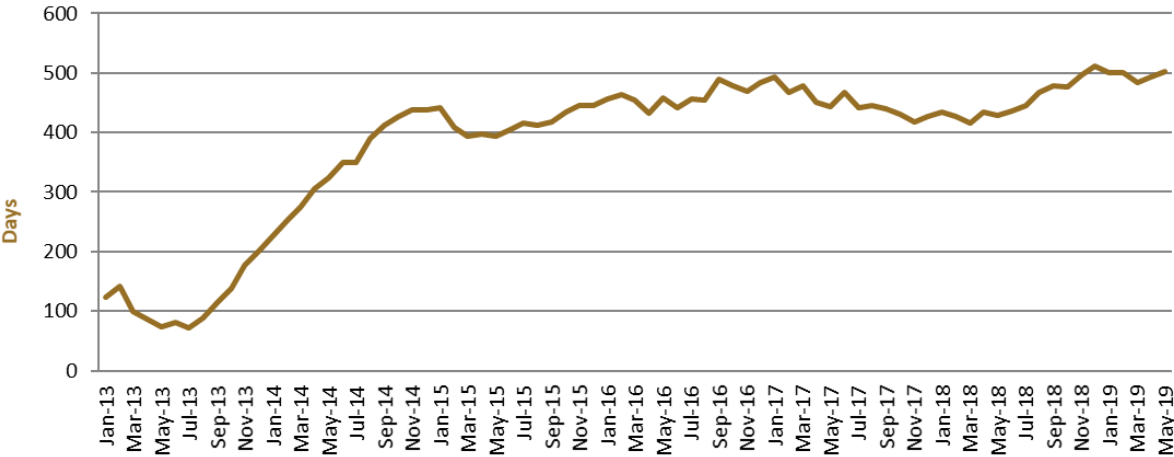


Figure 5 above, shows the average days in held immigration detention at the end of each month from January 2013 to the date of this report. The average period of time for people held in detention facilities steadily increased from July 2013 to January 2015.

Time In Community Under Residence Determination

Of the 781 people in the community under residence determination, as at 30 June 2019, 6.7 per cent had been in the community for 91 days or less and 55.6 per cent had been in the community for 365 days or less.

Table 9 – Length of Time of People in Community under Residence Determination at 30 June 2019

Period Detained	Total	% of Total
7 days or less	<5	0.1%
8 days - 31 days	0	0.0%
32 days - 91 days	51	6.5%
92 days - 182 days	41	5.2%
183 days - 365 days	341	43.7%
366 days - 547 days	34	4.4%
548 days - 730 days	21	2.7%
Greater than 730 days	292	37.4%
Total	781	100%