



Australian Government
Department of Home Affairs



Australian
BORDER FORCE

Immigration Detention and Community Statistics Summary

28 February 2022

Table of Contents

- About this report 3**
- Enquiries 3**
- Acronyms 3**
- Important Notice on APODs 3**
- Immigration Detention And Community Statistics Summary 4**
- In Community under Residence Determination Population By State/Territory 5**
- Immigration Detention Population..... 6**
 - From January 1990 to Current..... 6
- People In Immigration Detention Facilities..... 7**
 - Arrival Type..... 7
- People In Immigration Detention 9**
 - Nationality 9
- Children In Immigration Detention 10**
- Time In Immigration Detention Facilities 12**
- Time In Community Under Residence Determination 13**

About this report

This report provides an overview of the number of people in onshore immigration detention as at midnight on the date of the report. The report is produced on a monthly basis.

As data is sourced from several departmental processing and recording systems, data relating to the immigration detention population is dynamic and variations between monthly reports can occur. Due to these issues, data from the current financial year should always be considered provisional.

Further information about immigration detention is available at:

<https://www.homeaffairs.gov.au/research-and-statistics/statistics/visa-statistics/live/immigration-detention>

Enquiries

Comments or enquiries concerning this report should be sent using the Department's client service feedback form quoting the name and date of the report.

See: <https://immi.homeaffairs.gov.au/help-support/contact-us>

Acronyms

Table 1 – Acronyms used in this document

Acronym	Description
APOD	Alternative Place of Detention
IMA	Illegal Maritime Arrival
IDC/F	Immigration Detention Centre/Facility
IRH	Immigration Residential Housing
ITA	Immigration Transit Accommodation
S501	Section 501 of the <i>Migration Act 1958</i> (the Migration Act)
S501 Visa Cancellation	Visa cancellations based on character or related grounds

Important Notice on APODs

From July 2020, detainees residing in APODs are reported under 'APODs' rather than under the ITA or IDC that had responsibility for their management and care. APODs include hospitals, aged-care facilities, mental health inpatient facilities, as well as hotel and apartment style accommodation. The number of individuals in APODs is provided by the State and Territory of the APODs.

Immigration Detention And Community Statistics Summary

At 28 February 2022, there were 1534 people in immigration detention facilities.

Of the 1534 people in immigration detention facilities, 1332 (86.8) per cent have a criminal history.

A further 567 people were living in the community after being approved for residence determination and 11,098 IMAs were living in the community after grant of a Bridging Visa E.

The table below reflects figures based on records in Department of Home Affairs systems.

Table 2 – People in Immigration Detention Centres (IDCs), Alternative Places of Detention (APODs), Immigration Transit Accommodation (ITA) and the Community at 28 February 2022

Place of immigration detention by State*	Men	Women	Children	Total	Change from 31/01/22
NSW					
Villawood IDC	471	30	0	501	- 27
APODs	<40	<5	0	40	+ 24
VIC					
Melbourne ITA	251	6	0	257	- 10
APODs	35	0	0	35	0
QLD					
Brisbane ITA	109	0	0	109	+ 7
APODs	33	7	0	40	- <5
SA					
Adelaide ITA	24	0	0	24	+ <5
APODs	<5	0	0	<5	- <5
WA					
Yongah Hill IDC	295	0	0	295	- <5
Perth IDC	14	6	0	20	- <5
APODs	<10	<5	0	13	+ <5
North West Point IDC	198	0	0	198	- 7
Christmas Island APODs	0	0	0	0	0
NT					
APODs	<5	0	0	<5	- <5
Total IDCs	978	36	0	1,014	- 40
Total APODs	115	15	0	130	+ 22
Total ITAs	384	6	0	390	- 2
Total IDCs/APODs/ITAs	1,477	57	0	1,534	- 20
Total in Community under Residence Determination	227	166	174	567	- 4
Total IMAs in Community on Bridging Visa E (Including people in a re-grant process)	8,274	1,293	1,531	11,098	- 127

* Refer to Important Notice on APODs on page 3.

In Community under Residence Determination Population By State/Territory

Of the 567 people approved for a residence determination to live in the community, 47.6 per cent were in Victoria, 30.9 per cent in Queensland, 16.6 per cent in New South Wales, 3.2 per cent in South Australia, 1.8 per cent in Western Australia.

Table 3 – People in the Community under Residence Determination by State/Territory at 28 February 2022

State/Territory	Men	Women	Children	Total
New South Wales	35	35	24	94
Victoria	108	78	84	270
Queensland	68	46	61	175
South Australia	<15	<5	<5	18
Western Australia	<5	<5	<5	10
Total	227	166	174	567

Immigration Detention Population

From January 1990 to Current

The overall number of people in immigration detention including in the community under residence determination has increased by 37 to 2101 compared with 2064 at the end of February 2021.

This number takes into account detainees in the community under residence determination and detainees who were held in immigration detention facilities as at 28 February 2022.

Figure 1 – Population in Immigration Detention

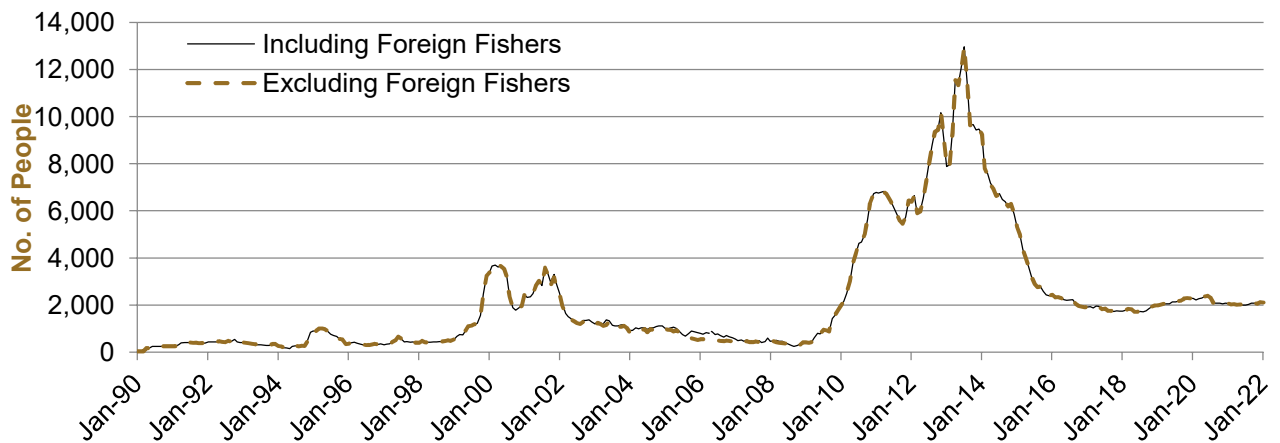


Figure 1 above, shows the number of people in immigration detention from 1990 to 2022.

People In Immigration Detention Facilities

Arrival Type

There were 283 people who arrived unlawfully by air or boat, in held immigration detention facilities at 28 February 2022 representing 18.4 per cent of the total immigration detention population.

There were also 1251 people (81.6 per cent of the total immigration detention population) who arrived in Australia lawfully and were subsequently taken into immigration detention for either overstaying or having their visas cancelled for breaching visa conditions.

Figure 2 – People in Held Immigration Detention Facilities by Detention Group

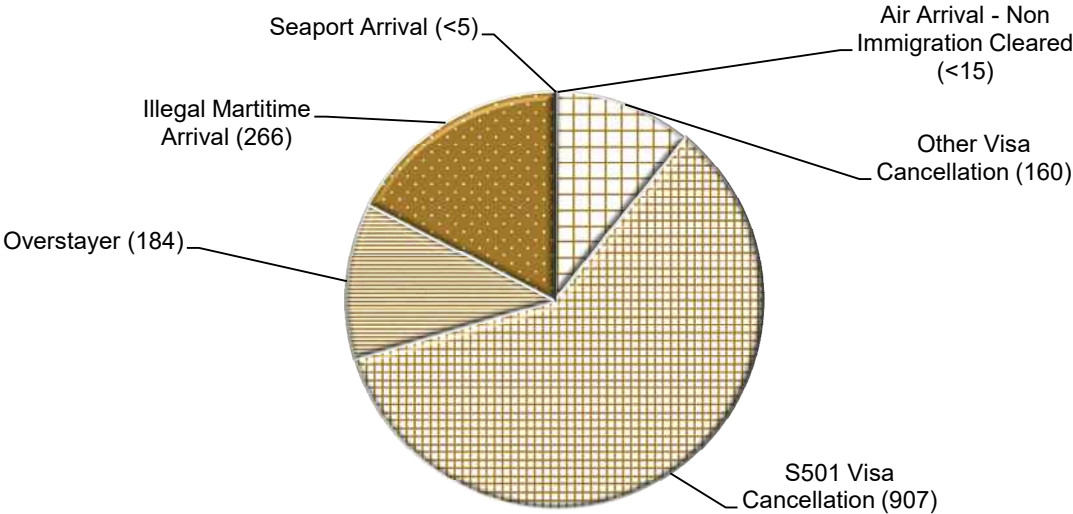


Figure 2 above, shows the number of people in held immigration detention facilities at 28 February 2022 by detention group, including Overstayers, S501 and Other Visa Cancellations, Illegal Maritime Arrivals, Unauthorised Air Arrivals, and if applicable – Illegal Foreign Fishers and Others such as stowaways and ship deserters.

Table 4 – People in Held Immigration Detention Facilities by Detention Group at 28 February 2022

Place of immigration detention by State*	S501 Visa Cancellation	IMA	Other Detention Group	Total	Change from 31/01/22
NSW					
Villawood IDC	318	55	128	501	- 27
APODs	20	<5	<20	40	+ 24
VIC					
Melbourne ITA	120	53	84	257	- 10
APODs	<5	<35	0	35	0
QLD					
Brisbane ITA	72	<25	<15	109	+ 7
APODs	33	<5	<10	40	- <5
SA					
Adelaide ITA	15	<5	<10	24	+ <5
APODs	0	0	<5	<5	- <5
WA					
Yongah Hill IDC	159	76	60	295	- <5
Perth IDC	11	<5	<10	20	- <5
APODs	<10	<5	5	13	+ <5
North West Point IDC	151	<15	<40	198	- 7
Christmas Island APODs	0	0	0	0	0
NT					
APODs	0	0	<5	<5	- <5
Total IDCs	639	147	228	1,014	- 40
Total APODs	61	39	30	130	+ 22
Total ITAs	207	80	103	390	- 2
Total IDCs/APODs/ITAs	907	266	361	1,534	- 20

* Refer to Important Notice on APODs on page 3.

Table 5 – People in Held Immigration Detention Facilities by Detention Group and Cohort at 28 February 2022

Detention Group	Men	Women	Children	Total	Change from 31/01/22
S501 Visa Cancellation	874	33	0	907	- 31
Illegal Maritime Arrival	<265	<5	0	266	- 4
Other	<345	<25	0	361	+ 15
Total	1,477	57	0	1,534	- 20

People In Immigration Detention

Nationality

At 28 February 2022, there were 1534 people in held immigration detention facilities. Of these 1534 people, 19.6 per cent were from New Zealand, 9.2 per cent were from Iran, 9.1 per cent were from Vietnam, 4.5 per cent were from Sudan and 4.2 per cent were from India.

Table 6 – People in Held Immigration Detention Facilities by Nationality at 28 February 2022

Nationalities	Men	Women	Children	Total
New Zealand	279	21	0	300
Iran	<145	<5	0	141
Vietnam	127	13	0	140
Sudan	<70	<5	0	69
India	<65	<5	0	65
Iraq	60	0	0	60
Afghanistan	51	0	0	51
Sri Lanka	46	0	0	46
United Kingdom	43	0	0	43
Stateless	41	0	0	41
China	33	8	0	41
Tonga	41	0	0	41
Other	486	10	0	496
Total	1,477	57	0	1,534

At 28 February 2022, 567 were people living in the community after being approved for a residence determination. Of these 567 people, 52.2 per cent were from Iran, 10.1 per cent were Stateless, 9.7 per cent were from Sri Lanka, 8.5 per cent were from Somalia and 3.2 per cent were from Afghanistan.

Table 7 – People in the Community under Residence Determination by Nationality at 28 February 2022

Nationalities	Men	Women	Children	Total
Iran	101	100	95	296
Stateless	27	12	18	57
Sri Lanka	21	11	23	55
Somalia	<20	<20	<20	48
Afghanistan	<15	<5	<5	18
Other	51	22	20	93
Total	227	166	174	567

Children In Immigration Detention

At 28 February 2022, there were no children (aged less than 18 years) in Immigration Residential Housing, Immigration Transit Accommodation and Alternative Places of Detention.

Figure 3 – Children in Immigration Residential Housing, Immigration Transit Accommodation and Alternative Places of Detention

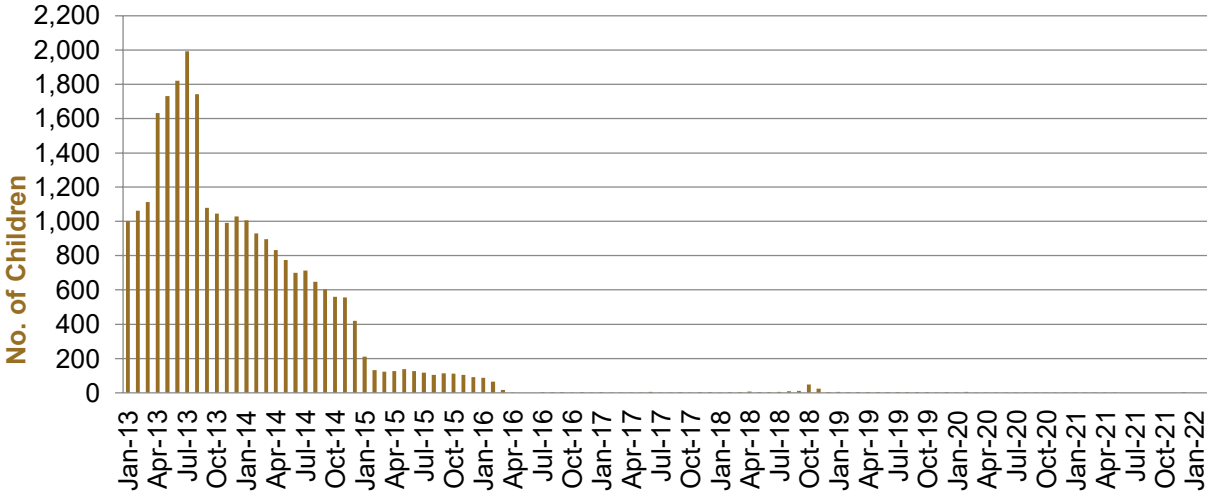


Figure 3 above, shows the number of children in IDFs and APODs from January 2013 to the date of this report. The continuous increase in the number of children in IDFs from April 2013 to Aug 2013 was due to a rapid increase in IMAs during this period. The number of children in IDFs continued to decline during the late 2013 and 2014, with further reduction in January 2015.

At 28 February 2022, the number of children living in the community after being approved for a residence determination has decreased by 2 to 174 from 176 since the previous report.

Figure 4 – Children in the Community under Residence Determination

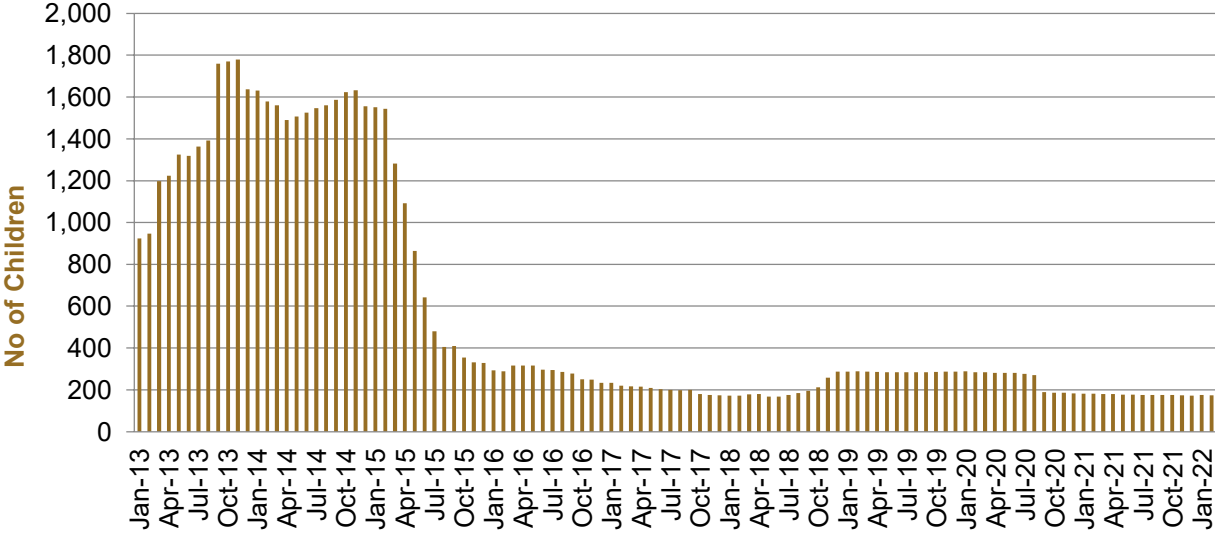


Figure 4 above, shows the number of children in the community under residence determination from January 2013 to the date of this report. The number of children in the community under residence determination, has levelled off at its lowest number since the peak in November 2013, as a result of releases into the community on Bridging E visas.

Table 8 – Children in Immigration Detention and IMA Children in the Community on a Bridging E Visa at 28 February 2022

Placement Type	Children
Immigration Residential Housing	0
Immigration Transit Accommodation	0
Alternative Places of Detention	0
Total Facility	0
Total in the Community under a Residence Determination	174
Total IMAs in the Community on a Bridging E visa (including in re-grant process)	1,531

Time In Immigration Detention Facilities

At 28 February 2022, there were 1534 people in immigration detention facilities.

Of these 1534 people, 16.4 per cent had been detained for 91 days or less and 46.5 per cent had been detained for 365 days or less.

Table 9 – Length of Time of People in Held Immigration Detention Facilities at 28 February 2022

Period Detained	Total	% of Total
7 days or less	31	2.0%
8 days - 31 days	66	4.3%
32 days - 91 days	155	10.1%
92 days - 182 days	213	13.9%
183 days - 365 days	249	16.2%
366 days - 547 days	169	11.0%
548 days - 730 days	108	7.0%
731 days - 1095 days	199	13.0%
1096 days - 1460 days	125	8.1%
1461 days - 1825 days	91	5.9%
Greater than 1825 days	128	8.3%
Total	1,534	100%

At 28 February 2022, the average period of time for people held in detention facilities was 697 days.

Figure 5 – Average Number of Days of People in Held Immigration Detention Facilities only

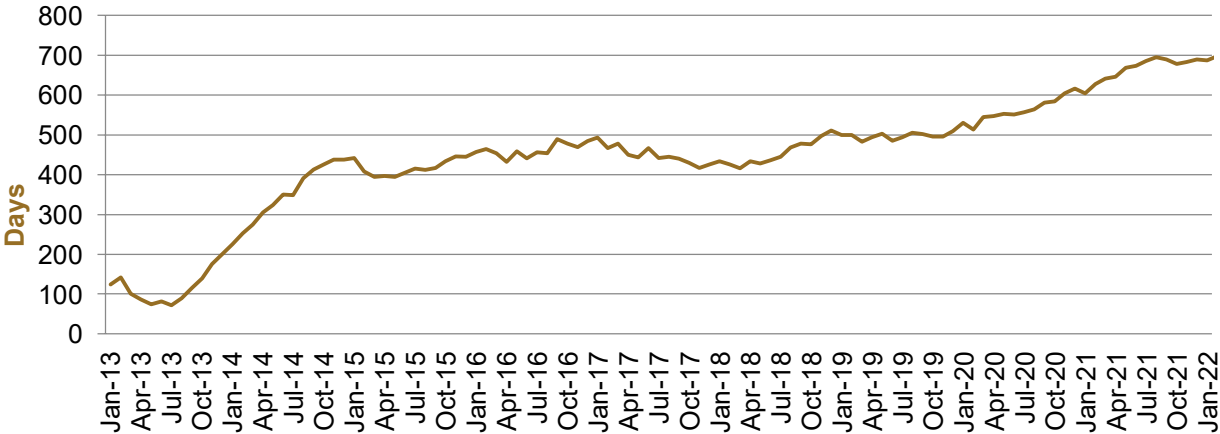


Figure 5 above, shows the average days in held immigration detention at the end of each month from January 2013 to the date of this report. The average period of time for people held in detention facilities steadily increased from July 2013 to January 2015. Between November 2018 and December 2019, the average number of days remained around 500. Since January 2020, the average period of time for people held in detention facilities has steadily increased.

The time an individual spends in immigration detention depends on a range of factors, including the complexity of their case, the legal processes they pursue and whether they voluntarily choose to leave Australia.

Time In Community Under Residence Determination

Of the 567 people in the community under residence determination, as at 28 February 2022, 1.9 per cent had been in the community for 91 days or less and less than 11 per cent had been in the community for 365 days or less.

Table 10 – Length of Time of People in Community under Residence Determination at 28 February 2022

Period Detained	Total	% of Total
7 days or less	5	0.9%
8 days - 31 days	0	0.0%
32 days - 91 days	6	1.1%
92 days - 182 days	<5	<1.0%
183 days - 365 days	42	7.4%
366 days - 547 days	27	4.8%
548 days - 730 days	<5	<1.0%
731 days - 1095 days	64	11.3%
1096 days - 1460 days	210	37.0%
1461 days - 1825 days	39	6.9%
Greater than 1825 days	167	29.5%
Total	567	100%