



Australian Government
Department of Home Affairs



Australian
BORDER FORCE

Immigration Detention and Community Statistics Summary

26 April 2018

Table of Contents

About this report.....	3
Enquiries.....	3
Acronyms.....	3
Immigration Detention And Community Statistics Summary.....	4
In Community under Residence Determination Population By State/Territory.....	5
Immigration Detention Population.....	6
From 1990 to 26 April 2018.....	6
People In Immigration Detention Facilities.....	7
Arrival Type.....	7
People In Immigration Detention.....	7
Nationality.....	8
Children In Immigration Detention.....	9
Time In Immigration Detention Facilities.....	11
Time In Community Under Residence Determination.....	12

About this report

This report provides an overview of the number of people in immigration detention and Regional Processing Centres as at midnight on the date of the report. The report is produced on a monthly basis.

Data is sourced from several departmental processing and recording systems. Data relating to the immigration detention population is dynamic and there can be delays in transmission of information from the department's immigration detention network operations. Variations in figures between this report and previous issues can occur. Due to these issues, data from the current financial year should always be considered provisional.

Please note that due to technical issues, figures contained in this report, are as at 26 April 2018. We apologise for the inconvenience this may have caused.

Further information about immigration detention is available at:

<http://www.homeaffairs.gov.au/about/immigration-detention-in-australia>

Enquiries

Comments or enquiries concerning this report should be sent using the department's client service feedback form quoting the name and date of the report.

See: <http://www.homeaffairs.gov.au/about/contact>

Acronyms

Table 1 – Acronyms used in this document

Acronym	Description
APOD	Alternative Place of Detention
IMA	Illegal Maritime Arrival
IDC/F	Immigration Detention Centre/Facility
IRH	Immigration Residential Housing
ITA	Immigration Transit Accommodation
RPC	Regional Processing Centre
S501	Section 501 of the Migration ACT
S501 Visa Cancellation	Visa cancellations based on character or related grounds

Immigration Detention And Community Statistics Summary

At 26 April 2018, there were 1369 people in immigration detention facilities, including 1065 in immigration detention on the mainland and 304 in immigration detention on Christmas Island.

A further 457 people were living in the community after being approved for a residence determination and 17,980 were living in the community after grant of a Bridging Visa E.

The table below reflects figures based on records in Department of Home Affairs systems.

Table 2 – People in Immigration Detention Facilities (IDFs), Alternative Places of Detention (APODs), Regional Processing Centres (RPCs) and the Community at 26 April 2018

Place of immigration detention	Men	Women	Children	Total	Change from Previous Summary 31/03/18
Christmas Island IDC	304	0	0	304	- 26
Maribyrnong IDC	97	9	0	106	+ 5
Perth IDC	21	12	0	33	- 6
Villawood IDC	434	47	0	481	- 39
Yongah Hill IDC	264	0	0	264	+ 22
Mainland APODs	5	<5	5	14	+ 5
Total IDCs/APODs	1,125	72	5	1,202	- 39
Adelaide ITA	16	<5	0	17	0
Brisbane ITA	53	8	0	61	- 5
Melbourne ITA	81	6	<5	89	+ 24
Total in ITA	150	15	<5	167	+ 19
Total in IDC/F	1,275	87	7	1,369	- 20
Total in Community under Residence Determination	137	140	180	457	+ 5
Total IMA in Community on Bridging Visa E (Including people in a re-grant process)	12,712	2,277	3,038	18,027	- 298
Republic of Nauru (RPC)	207	26	22	255	- 14
Manus Province, Papua New Guinea (RPC)	0	0	0	0	0
Total IMA in RPCs	207	26	22	255	- 14
Detention Group					
S501 Visa Cancellation	453	18	0	471	- 21
Illegal Maritime Arrival	336	9	<5	349	+ 14
Other	486	60	<5	549	- 13
Total	1,275	87	7	1,369	- 20

In Community under Residence Determination Population By State/Territory

Of the 457 people approved for a residence determination to live in the community, 35.2 per cent were in Victoria, 27.4 per cent in Queensland, 23.9 per cent in New South Wales, 6.8 per cent in South Australia and 6.8 per cent in Western Australia.

Table 3 – People in the Community under Residence Determination by State/Territory at 26 April 2018

State/Territory	Adult Male	Adult Female	Child Male (<18 years)	Child Female (<18 years)	Total
Victoria	51	47	36	27	161
Queensland	36	33	31	25	125
New South Wales	29	41	22	17	109
South Australia	7	10	5	9	31
Western Australia	14	9	5	<5	31
Total	137	140	99	81	457

Immigration Detention Population

From 1990 to 26 April 2018

The overall number of people in immigration detention including in the community under residence determination has decreased by 122 to 1826 compared with 1948 at the end of April 2017. This decrease takes into account releases of detainees into the community under residence determination and detainees granted Bridging E visas (BVEs) as well as decreases through return and removal activities.

Figure 1 – Population in Immigration Detention

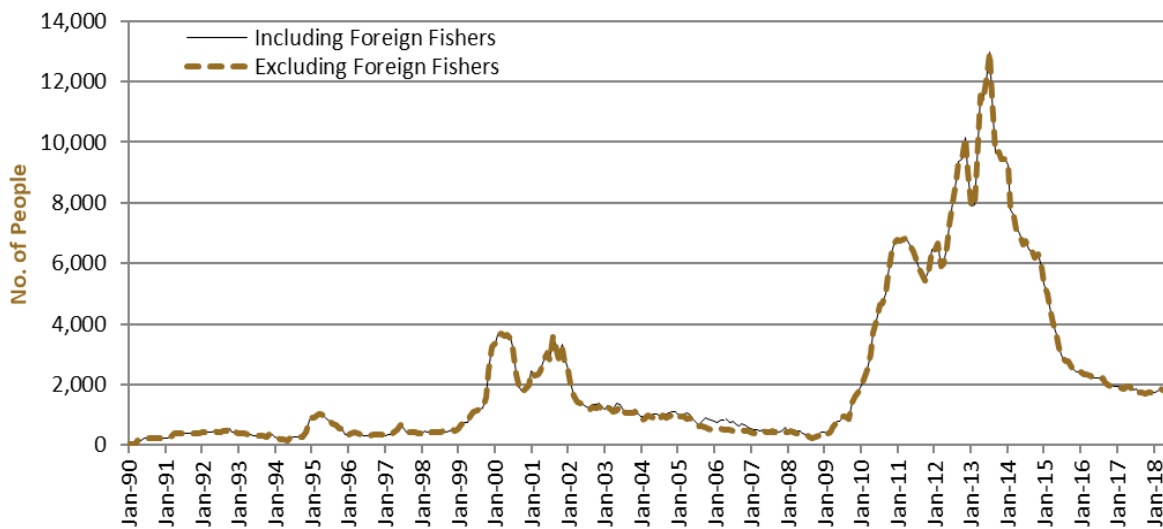


Figure 1 above, shows the number of people in immigration detention from 1990 to the date of this report. The trend had a consistent rise of people in immigration detention from January 2009 to January 2013, but has since had consistent decline.

People In Immigration Detention Facilities

Arrival Type

There were 395 people who arrived unlawfully by air or boat, in held immigration detention facilities at 26 April 2018 representing 28.9 per cent of the total immigration detention population.

There were also 974 people (71.1 per cent of the total immigration population) who arrived in Australia lawfully and were subsequently taken into immigration detention for either overstaying or having their visas cancelled for breaching visa conditions.

Figure 2 – People in Held Immigration Detention Facilities by Detention Group

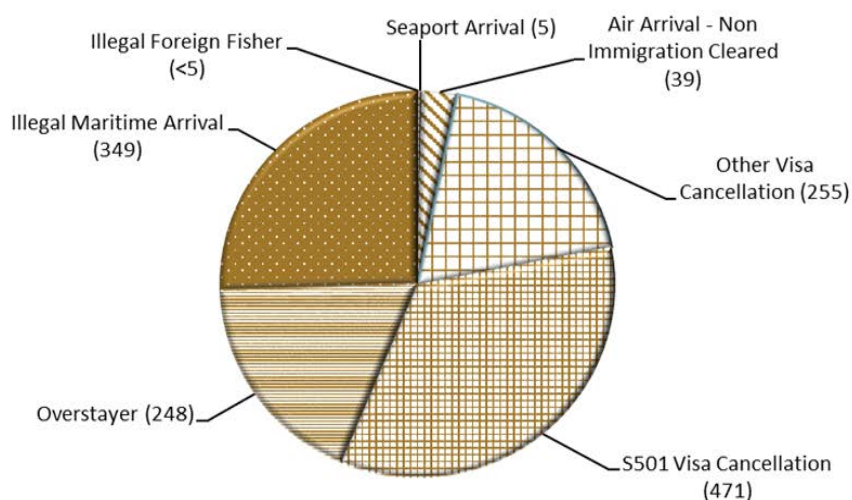


Figure 2 above, shows the number of people in held immigration detention facilities by detention group, including Overstayers, S501 and Other Visa Cancellations, Foreign Fishers, Illegal Maritime Arrivals, Unauthorised Air Arrivals, and if applicable – Inadequately Documented Crew Members and Others such as stowaways and ship deserters.

Table 4 – People in Held Immigration Detention Facilities by Detention Group at 26 April 2018

Place of immigration detention	S501 Visa Cancellation	IMA	Other Detention Group	Total	Change from Previous Summary 31/03/18
Christmas Island IDC	155	87	62	304	- 26
Maribyrnong IDC	34	16	56	106	+ 5
Perth IDC	9	5	19	33	- 6
Villawood IDC	152	106	223	481	- 39
Yongah Hill IDC	112	61	91	264	+ 22
Mainland APODs	0	9	5	14	+ 5
Total IDCs/APODs	462	284	456	1,202	- 39
Adelaide ITA	<5	12	<5	17	0
Brisbane ITA	<5	13	45	61	- 5
Melbourne ITA	<5	40	46	89	+ 24
Total in IRH and ITA	9	65	93	167	+ 19
Total in IDC/F	471	349	549	1,369	- 20

People In Immigration Detention

Nationality

At 26 April 2018, there were 1369 people in held immigration detention facilities. Of these 1369 people, 14 per cent were from New Zealand, 8.7 per cent were from Vietnam, 8.5 per cent were from Sri Lanka, 8 per cent were from Iran and 4.4 per cent were from China.

Table 5 – People in Held Immigration Detention Facilities by Nationality at 26 April 2018

Nationalities	Adult Male	Adult Female	Child Male (<18 years)	Child Female (<18 years)	Total
New Zealand	174	16	<5	0	191
Vietnam	103	16	0	0	119
Sri Lanka	111	<5	0	<5	116
Iran	106	<5	<5	<5	109
China	47	13	0	0	60
United Kingdom	54	<5	0	0	57
India	47	0	0	0	47
Iraq	42	<5	0	0	44
Malaysia	39	<5	<5	0	43
Sudan	41	<5	0	0	42
Other	511	29	<5	0	541
Total	1,275	87	<5	<5	1,369

At 26 April 2018, 457 were people living in the community after being approved for a residence determination. Of these 457 people, 55.1 per cent were from Iran, 11.4 per cent were Stateless, 9.2 per cent were from Sri Lanka, 3.3 per cent were from Somalia and 3.1 per cent were from Iraq.

Table 6 – People in the Community under Residence Determination by Nationality at 26 April 2018

Nationalities	Adult Male	Adult Female	Child Male (<18 years)	Child Female (<18 years)	Total
Iran	75	84	51	42	252
Stateless	17	12	10	13	52
Sri Lanka	12	10	14	6	42
Somalia	<5	8	<5	<5	15
Iraq	6	5	<5	<5	14
Other	24	21	20	17	82
Total	137	140	99	81	457

Children In Immigration Detention

At 26 April 2018 there were seven children (aged less than 18 years) in Immigration Residential Housing, Immigration Transit Accommodation and Alternative Places of Detention.

Figure 3 – Children in Immigration Residential Housing, Immigration Transit Accommodation and Alternative Places of Detention

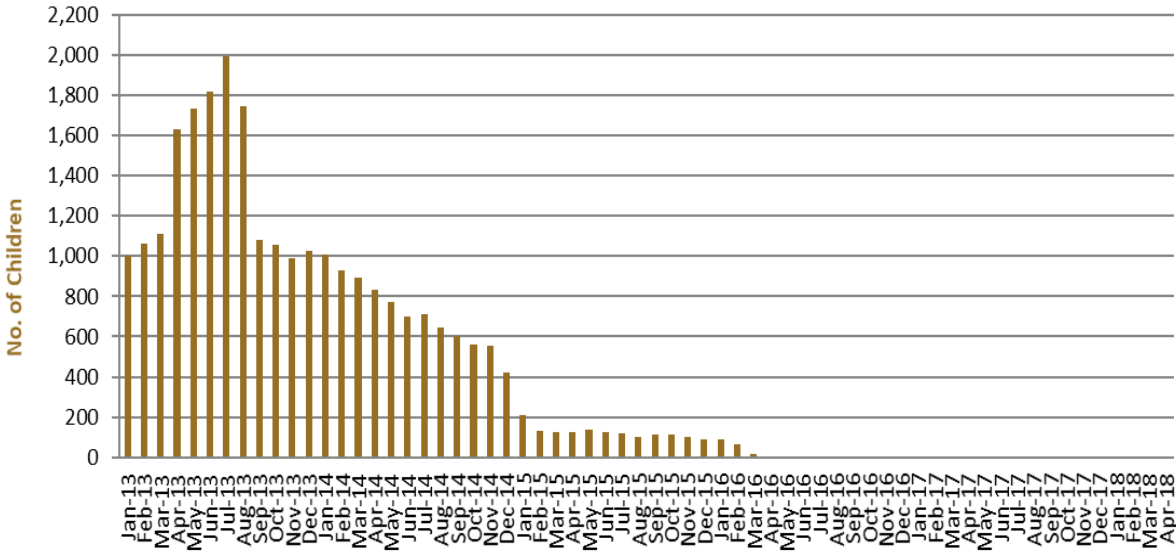


Figure 3 above, shows the number of children in immigration detention facilities and alternative places of detention from January 2013 to the date of this report. The continuous increase in the number of children in detention facilities from April 2013 to Aug 2013 was due to a rapid increase in illegal maritime arrivals during this period. The number of children in immigration detention facilities reduced in September 2013, as children completed mandatory processing and were transferred into the community. The number of children in detention facilities continued to decline during the late 2013 and 2014, with further reduction in January 2015.

At 26 April 2018, the number of children living in the community after being approved for a residence determination increased by one to 180 from 179 in the previous report.

Figure 4 – Children in the Community under Residence Determination

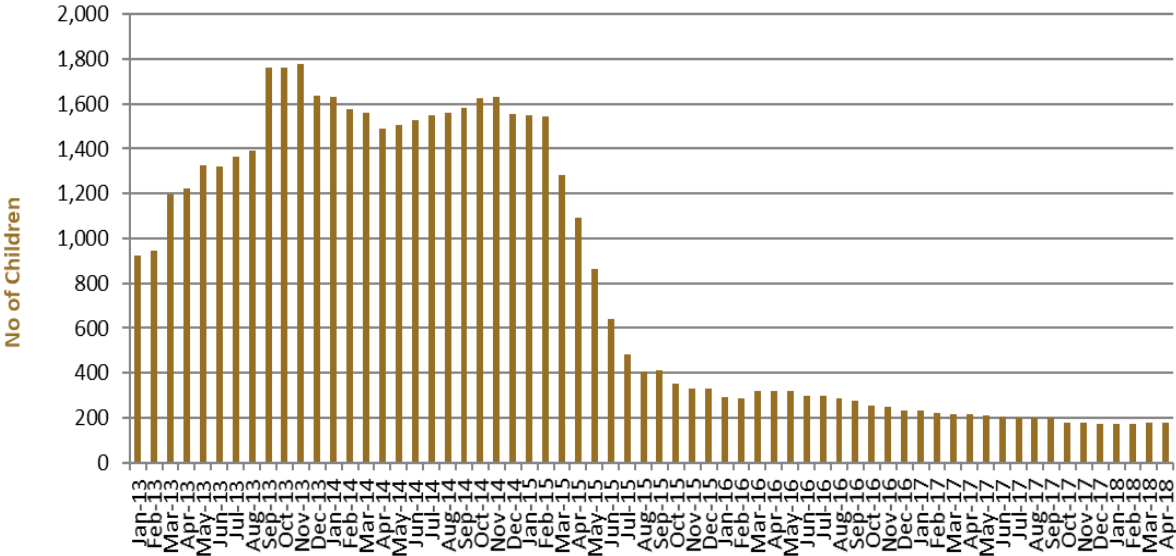


Figure 4 above, shows the number of children in the community under residence determination from January 2012 to the date of this report. The number of children in the community under residence determination, has levelled off at its lowest number since the peak in November 2013, as a result of releases into the community on Bridging E visas.

Table 7 – Children in Immigration Detention and IMA Children in the Community on a Bridging E Visa at 26 April 2018

Placement Type	Children
Immigration Residential Housing	0
Immigration Transit Accommodation	<5
Alternative Places of Detention	5
Total Children in Immigration Detention Facilities	7
Total Children in the Community under a Residence Determination	180
Total IMA Children in the Community on a Bridging E visa (including in re-grant process)	3,034

Time In Immigration Detention Facilities

At 26 April 2018, there were 1369 people in immigration detention facilities. Of these 1369 people, 33.5 per cent had been detained for 91 days or less and 66.3 per cent had been detained for 365 days or less.

Table 8 – Length of Time of People in Held Immigration Detention Facilities at 26 April 2018

Period Detained	Total	% of Total
7 days or less	18	1.3%
8 days - 31 days	188	13.7%
32 days - 91 days	252	18.4%
92 days - 182 days	216	15.8%
183 days - 365 days	234	17.1%
366 days - 547 days	127	9.3%
548 days - 730 days	70	5.1%
Greater than 730 days	264	19.3%
Total	1,369	100%

At 26 April 2018, the average period of time for people held in detention facilities was 434 days.

Figure 5 – Average Number of Days of People in Held Immigration Detention Facilities only

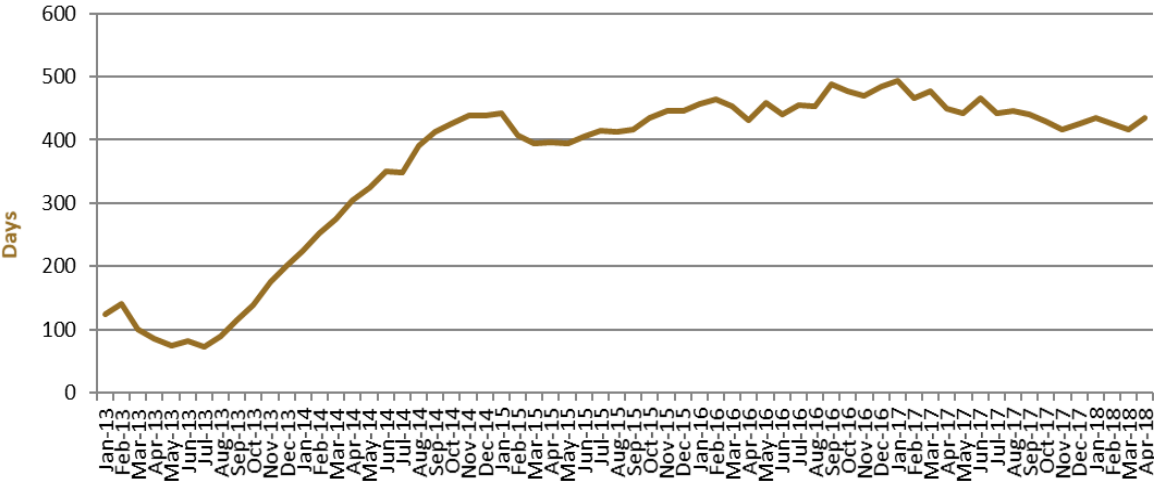


Figure 5 above, shows the average days in held immigration detention at the end of each month from January 2013 to the date of this report. The average period of time for people held in detention facilities steadily increased from July 2013 to January 2015.

Time In Community Under Residence Determination

Of the 457 people in the community under residence determination, as at 26 April 2018, 5.7 per cent had been in the community for 91 days or less and 18.4 per cent had been in the community for 365 days or less.

Table 9 – Length of Time of People in Community under Residence Determination at 26 April 2018

Period Detained	Total	% of Total
7 days or less	<5	0.4%
8 days - 31 days	11	2.4%
32 days - 91 days	13	2.8%
92 days - 182 days	21	4.6%
183 days - 365 days	37	8.1%
366 days - 547 days	46	10.1%
548 days - 730 days	28	6.1%
Greater than 730 days	299	65.4%
Total	457	100%