



Australian Government
Department of Home Affairs



Australian
BORDER FORCE

Immigration Detention and Community Statistics Summary

May 2024 (released 27 June 2024)

Table of Contents

About this report	3
Enquiries	3
Acronyms	3
Notice on APODs	3
Notice on ITAs	3
Immigration Detention and Community Statistics Summary	4
In Community under Residence Determination Population by State/Territory	5
Immigration Detention Population.....	6
<i>From January 1990 to Current.....</i>	<i>6</i>
People In Immigration Detention Facilities.....	7
<i>Arrival Type.....</i>	<i>7</i>
People In Immigration Detention	9
<i>Nationality</i>	<i>9</i>
Children In Immigration Detention	10
Time In Immigration Detention Facilities	12
Time In Community Under Residence Determination	13

About this report

This report provides an overview of the number of people in onshore immigration detention, as at the morning of the first day following the end of the reporting month. The report is produced on a monthly basis.

As data is sourced from several departmental processing and recording systems, data relating to the immigration detention population is dynamic and variations between monthly reports can occur. Due to these issues, data from the current financial year should always be considered provisional.

Further information about immigration detention is available at:

<https://www.homeaffairs.gov.au/research-and-statistics/statistics/visa-statistics/live/immigration-detention>

Enquiries

Comments or enquiries concerning this report should be sent using the Department's client service feedback form quoting the name and date of the report.

See: <https://immi.homeaffairs.gov.au/help-support/contact-us>

Acronyms

Table 1 – Acronyms used in this document

Acronym	Description
APOD	Alternative Place of Detention
IDC/F	Immigration Detention Centre/Facility
ITA	Immigration Transit Accommodation
S501	Section 501 of the <i>Migration Act 1958</i> (the Migration Act)
S501 Visa Cancellation	Visa cancellations based on character or related grounds
UMA	Unauthorised Maritime Arrival

Notice on APODs

From July 2020, detainees residing in APODs are reported under 'APODs' rather than under the IDC that had responsibility for their management and care. APODs include hospitals, aged-care facilities, mental health inpatient facilities, as well as hotel and apartment style accommodation. The number of individuals in APODs is broken down by the State and Territory of the APODs.

Notice on ITAs

For reports released from July 2023 onwards, detainees residing within Immigration Transit Accommodation (ITA) facilities are reported under Immigration Detention Centres (IDCs). There is no change to the management and care of detainees within the affected ITAs.

Immigration Detention and Community Statistics Summary

At 31 May 2024, there were 883 people in immigration detention facilities, and of those, 763 (86.4 per cent) have a criminal history. A further 236 people were living in the community after being approved for residence determination.

The table below reflects figures based on records in Department of Home Affairs systems.

Table 2 – People in Immigration Detention Centres (IDCs), Alternative Places of Detention (APODs) and the Community at 31 May 2024

Place of immigration detention by State*	Men	Women	Children	Total	Change from 30/04/24
NSW					
Villawood IDC	350	25	0	375	- 19
APODs	<15	<5	0	13	+ 5
VIC					
Melbourne IDC	163	10	0	173	- 5
APODs	<5	0	0	<5	0
QLD					
Brisbane IDC	92	0	0	92	0
APODs	<15	<5	0	13	+ <10
SA					
Adelaide IDC	<20	<5	0	20	+ 2
APODs	<5	<5	0	<5	+ <5
WA					
Yongah Hill IDC	163	0	0	163	0
Perth IDC	<15	7	<5	19	+ 7
APODs	<5	<5	0	<5	+ <5
NT					
APODs	<10	<5	0	9	+ <5
Total IDCs	<800	<45	<5	842	-15
Total APODs	<40	<10	0	41	+ 19
Total IDCs/APODs	832	<50	<5	883	+ 4
Total in Community under Residence Determination	122	55	59	236	- 1

* Refer to Notice on APODs on page 3.

In Community under Residence Determination Population by State/Territory

Of the 236 people approved for a residence determination to live in the community, 51.7 per cent were in Victoria, 34.7 per cent in Queensland, 11.4 per cent in New South Wales and 2.1 per cent in Western Australia.

Table 3 – People in the Community under Residence Determination by State/Territory at 31 May 2024

State/Territory	Men	Women	Children	Total
New South Wales	22	<5	<5	27
Victoria	59	<40	<30	122
Queensland	36	16	30	82
Western Australia	5	0	0	5
Total	122	55	59	236

Immigration Detention Population

From January 1990 to Current

The overall number of people in immigration detention including in the community under residence determination has decreased by 279 to 1119, compared with 1398 at the end of May 2023. This number takes into account detainees in the community under residence determination and detainees who were held in immigration detention facilities as at 31 May 2024.

Figure 1 – Population in Immigration Detention

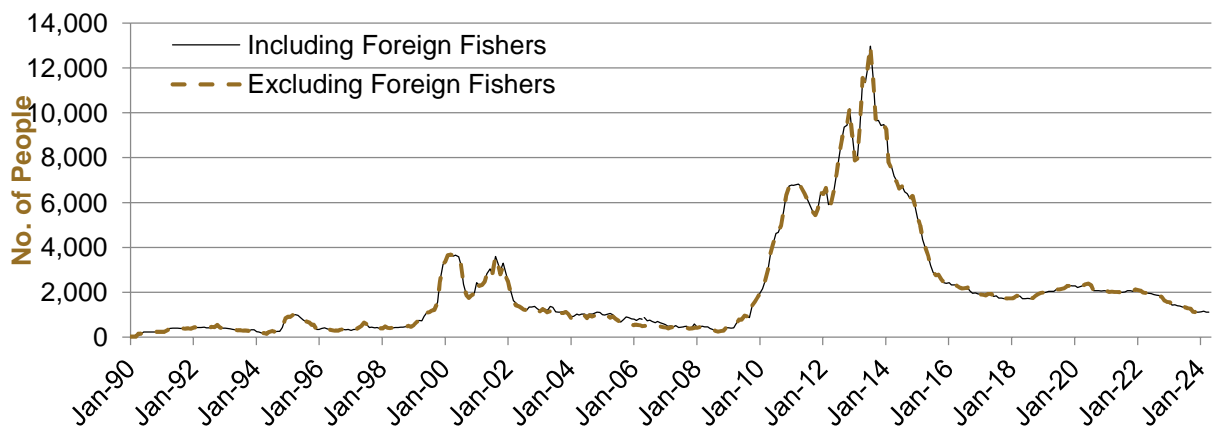


Figure 1 above, shows the number of people in immigration detention from 1990 to 2024.

People In Immigration Detention Facilities

Arrival Type

There were 155 people who arrived unlawfully by air or by boat, in held immigration detention facilities at 31 May 2024 representing 17.6 per cent of the total immigration detention population.

There were also 728 people (82.4 per cent of the total immigration detention population) who arrived in Australia lawfully and were subsequently taken into immigration detention for either overstaying or having their visas cancelled for reasons including failing the character test, breaching their visa conditions or presenting a risk to the safety, health or good order of the community.

Figure 2 – People in Held Immigration Detention Facilities by Detention Group

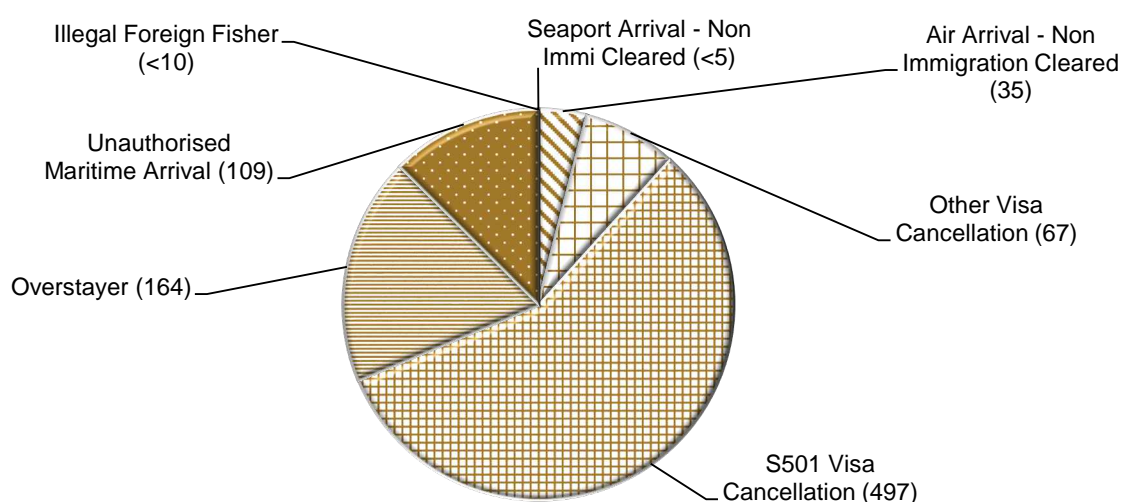


Figure 2 above, shows the number of people in held immigration detention facilities at 31 May 2024 by detention group, including Overstayers, S501 and Other Visa Cancellations, Unauthorised Maritime Arrivals, Unauthorised Air Arrivals, and if applicable – Illegal Foreign Fishers and Others such as stowaways and ship deserters.

Table 4 – People in Held Immigration Detention Facilities by Detention Group at 31 May 2024

Place of immigration detention by State*	S501 Visa Cancellation	UMA	Other Detention Group	Total	Change from 30/04/24
NSW					
Villawood IDC	226	41	108	375	- 19
APODs	<5	0	<15	13	+ 5
VIC					
Melbourne IDC	83	23	67	173	- 5
APODs	<5	0	0	<5	0
QLD					
Brisbane IDC	69	9	14	92	0
APODs	<5	0	<15	13	+ <10
SA					
Adelaide IDC	<10	<5	11	20	+ 2
APODs	0	0	<5	<5	+ 1
WA					
Yongah Hill IDC	100	31	32	163	0
Perth IDC	<10	<5	12	19	+ 7
APODs	<5	0	<5	<5	+ <5
NT					
APODs	0	<5	<10	9	+ <5
Total IDCs	490	<110	<245	842	- 15
Total APODs	7	<5	<35	41	+ 19
Total IDCs/APODs	497	109	277	883	+ 4

* Refer to Notice on APODs on page 3.

Table 5 – People in Held Immigration Detention Facilities by Detention Group and Cohort at 31 May 2024

Detention Group	Men	Women	Children	Total	Change from 30/04/24
S501 Visa Cancellation	<480	<25	0	497	- 7
Unauthorised Maritime Arrival	109	0	0	109	- 3
Other	<250	<30	<5	277	+ 14
Total	832	<50	<5	883	+ 4

People In Immigration Detention

Nationality

At 31 May 2024, there were 883 people in held immigration detention facilities. Of these 883 people, 17.1 per cent were from New Zealand, 6.8 per cent were from Vietnam, 6.7 per cent were from Iran, 5.7 per cent were from India and 4.1 per cent were from United Kingdom.

Table 6 – People in Held Immigration Detention Facilities by Nationality at 31 May 2024

Nationalities	Men	Women	Children	Total
New Zealand	136	15	0	151
Vietnam	53	7	0	60
Iran	59	0	0	59
India	50	0	0	50
United Kingdom	<35	<5	0	36
Sri Lanka	<35	<5	<5	35
Sudan	29	0	0	29
Tonga	29	0	0	29
China	20	7	0	27
Iraq	24	0	0	24
Other	368	15	0	383
Total	832	<50	<5	883

At 31 May 2024, 236 were people living in the community after being approved for a residence determination. Of these 236 people, 47.0 per cent were from Iran, 8.5 per cent were Stateless, 5.5 per cent were from Pakistan, 5.1 per cent were from Sri Lanka and 4.7 per cent were from Somalia.

Table 7 – People in the Community under Residence Determination by Nationality at 31 May 2024

Nationalities	Men	Women	Children	Total
Iran	49	31	31	111
Stateless ¹	13	<5	<5	20
Pakistan	13	0	0	13
Sri Lanka	<10	<5	<5	12
Somalia	<5	<5	<5	11
Other	37	15	17	69
Total	122	55	59	236

¹ The category of “Stateless” nationalities includes “claimed stateless” persons.

Children In Immigration Detention

At 31 May 2024, there were less than five children (aged less than 18 years) in Immigration Detention Facilities and Alternative Places of Detention.

Figure 3 – Children in Immigration Detention Facilities and Alternative Places of Detention

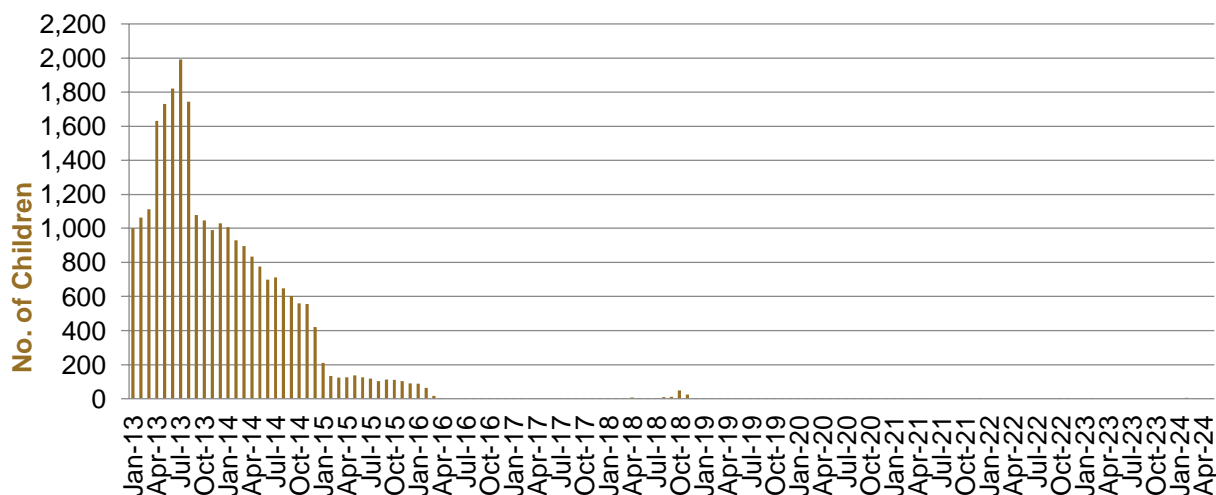


Figure 3 above, shows the number of children in IDFs and APODs from January 2013 to the date of this report. The continuous increase in the number of children in IDFs from April 2013 to Aug 2013 was due to a rapid increase in UMAs during this period. The number of children in IDFs continued to decline during the late 2013 and 2014, with further reduction in January 2015.

At 31 May 2024, the number of children living in the community after being approved for a residence determination has decreased by one to 59 from 60 since the previous report.

Figure 4 – Children in the Community under Residence Determination

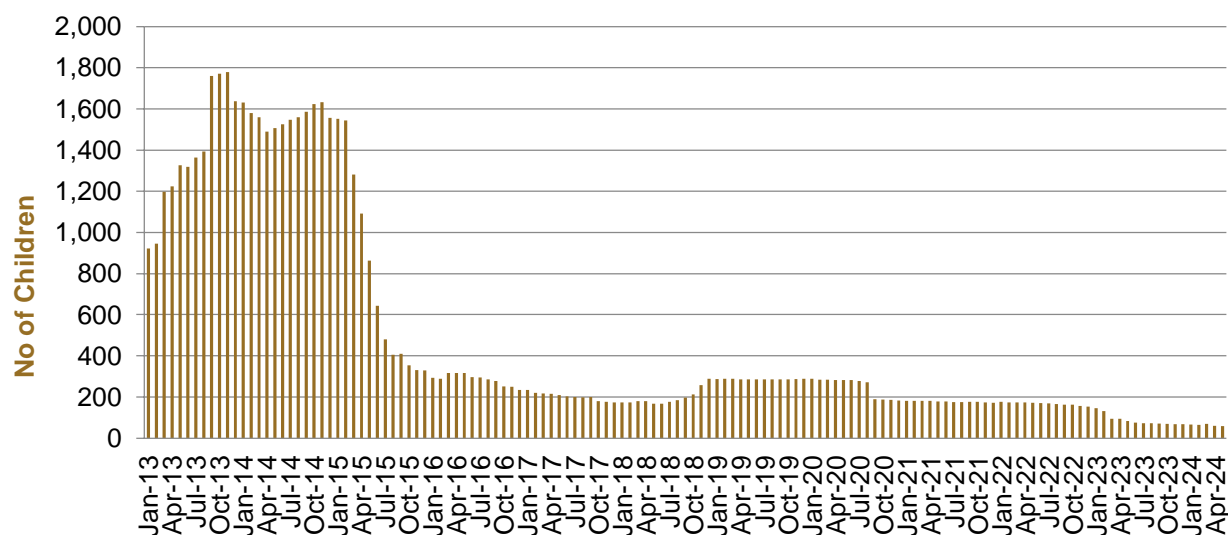


Figure 4 above, shows the number of children in the community under residence determination from January 2013 to the date of this report. The number of children in the community under residence determination, has levelled off at its lowest number since the peak in November 2013, as a result of releases into the community on Bridging Visa E.

Table 8 – Children in Immigration Detention at 31 May 2024

Placement Type	Children
Immigration Detention Centre	<5
Alternative Places of Detention	0
Total Facility	<5
Total in the Community under a Residence Determination	59

Time In Immigration Detention Facilities

At 31 May 2024, there were 883 people in immigration detention facilities.

Of these 883 people, 28.8 per cent had been detained for 91 days or less and 57.0 per cent had been detained for 365 days or less.

Table 9 – Length of Time of People in Held Immigration Detention Facilities at 31 May 2024

Period Detained	Total	% of Total
7 days or less	48	5.4%
8 days - 31 days	93	10.5%
32 days - 91 days	113	12.8%
92 days - 182 days	96	10.9%
183 days - 365 days	153	17.3%
366 days - 547 days	89	10.1%
548 days - 730 days	51	5.8%
731 days - 1095 days	68	7.7%
1096 days - 1460 days	59	6.7%
1461 days - 1825 days	39	4.4%
Greater than 1825 days	74	8.4%
Total	883	100%

At 31 May 2024, the average period of time for people held in detention facilities was 595 days.

Figure 5 – Average Number of Days of People in Held Immigration Detention Facilities only

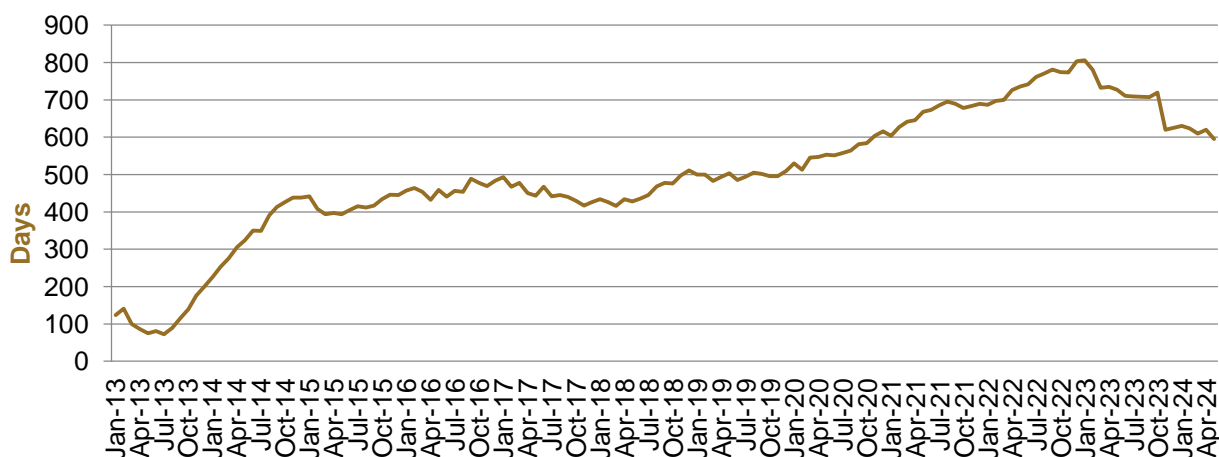


Figure 5 above, shows the average days in held immigration detention at the end of each month from January 2013 to the date of this report. The average period of time for people held in detention facilities steadily increased from July 2013 to January 2015. Between November 2018 and December 2019, the average number of days remained at around 500. Since January 2020, the average period of time for people held in detention facilities has steadily increased until January 2023, after which there has been an overall decrease.

The time an individual spends in immigration detention depends on a range of factors, including the complexity of their case, the legal processes they pursue and whether they voluntarily choose to leave Australia.

Time In Community Under Residence Determination

Of the 236 people in the community under residence determination, as at 31 May 2024, 3.8 per cent had been in the community for 91 days or less and 8.5 per cent had been in the community for 365 days or less.

Table 10 – Length of Time of People in Community under Residence Determination at 31 May 2024

Period Detained	Total	% of Total
7 days or less	0	0.0%
8 days - 31 days	0	0.0%
32 days - 91 days	9	3.8%
92 days - 182 days	0	0.0%
183 days - 365 days	11	4.7%
366 days - 547 days	37	15.7%
548 days - 730 days	6	2.5%
731 days - 1095 days	22	9.3%
1096 days - 1460 days	9	3.8%
1461 days - 1825 days	14	5.9%
Greater than 1825 days	128	54.2%
Total	236	100%