



Australian Government
Department of Home Affairs



Australian
BORDER FORCE

Immigration Detention and Community Statistics Summary

December 2024 (released 29 January 2025)

Table of Contents

About this report	3
Enquiries	3
Acronyms	3
Notice on APODs	3
Notice on ITAs	3
Immigration Detention and Community Statistics Summary	4
In Community under Residence Determination Population by State/Territory	5
Immigration Detention Population.....	6
<i>From January 1990 to Current.....</i>	<i>6</i>
People In Immigration Detention Facilities.....	7
<i>Arrival Type.....</i>	<i>7</i>
People In Immigration Detention	9
<i>Nationality</i>	<i>9</i>
Children In Immigration Detention	10
Time In Immigration Detention Facilities	12
Time In Community Under Residence Determination	13

About this report

This report provides an overview of the number of people in onshore immigration detention, as at the morning of the first day following the end of the reporting month. The report is produced on a monthly basis.

As data is sourced from several departmental processing and recording systems, data relating to the immigration detention population is dynamic and variations between monthly reports can occur. Due to these issues, data from the current financial year should always be considered provisional.

Further information about immigration detention is available at:

<https://www.homeaffairs.gov.au/research-and-statistics/statistics/visa-statistics/live/immigration-detention>

Enquiries

Comments or enquiries concerning this report should be sent using the Department's client service feedback form quoting the name and date of the report.

See: <https://immi.homeaffairs.gov.au/help-support/contact-us>

Acronyms

Table 1 – Acronyms used in this document

Acronym	Description
APOD	Alternative Place of Detention
IDC/F	Immigration Detention Centre/Facility
ITA	Immigration Transit Accommodation
S501	Section 501 of the <i>Migration Act 1958</i> (the Migration Act)
S501 Visa Cancellation	Visa cancellations based on character or related grounds
UMA	Unauthorised Maritime Arrival

Notice on APODs

From July 2020, detainees residing in APODs are reported under 'APODs' rather than under the IDC that had responsibility for their management and care. APODs include hospitals, aged-care facilities, mental health inpatient facilities, as well as hotel and apartment style accommodation. The number of individuals in APODs is broken down by the State and Territory of the APODs.

Notice on ITAs

For reports released from July 2023 onwards, detainees residing within Immigration Transit Accommodation (ITA) facilities are reported under Immigration Detention Centres (IDCs). There is no change to the management and care of detainees within the affected ITAs.

Immigration Detention and Community Statistics Summary

At 31 December 2024, there were 979 people in immigration detention facilities, and of those, 846 (86.4 per cent) have a criminal history. A further 155 people were living in the community after being approved for residence determination.

The table below reflects figures based on records in Department of Home Affairs systems.

Table 2 – People in Immigration Detention Centres (IDCs), Alternative Places of Detention (APODs) and the Community at 31 December 2024

Place of immigration detention by State*	Men	Women	Children	Total	Change from 30/11/24
NSW					
Villawood IDC	<375	<35	0	406	+ 8
APODs	13	<10	<5	19	+ 7
VIC					
Melbourne IDC	182	0	0	182	- 8
APODs	<5	9	0	<15	+ <5
QLD					
Brisbane IDC	111	0	0	111	- 12
APODs	8	5	0	13	- 6
SA					
Adelaide IDC	25	0	0	25	+ 3
APODs	0	0	0	0	0
WA					
Yongah Hill IDC	179	0	0	179	- 14
Perth IDC	<15	<5	0	17	+ 3
APODs	<5	<5	0	<5	+ <5
NT					
APODs	11	0	0	11	- 4
Total IDCs	883	37	0	920	- 20
Total APODs	37	<25	<5	59	+ 1
Total IDCs/APODs	920	<60	<5	979	- 19
Total in Community under Residence Determination	71	37	47	155	- 9

* Refer to Notice on APODs on page 3.

In Community under Residence Determination Population by State/Territory

Of the 155 people approved for a residence determination to live in the community, 56.8 per cent were in Victoria, 29.7 per cent in Queensland, less than 13.0 per cent in New South Wales and less than 3.0 per cent in Western Australia.

Table 3 – People in the Community under Residence Determination by State/Territory at 31 December 2024

State/Territory	Men	Women	Children	Total
New South Wales	11	<5	5	<20
Victoria	38	26	24	88
Queensland	<25	<10	18	46
Western Australia	<5	0	0	<5
Total	71	37	47	155

Immigration Detention Population

From January 1990 to Current

The overall number of people in immigration detention including in the community under residence determination has increased by 10 to 1134, compared with 1124 at the end of December 2023. This number takes into account detainees in the community under residence determination and detainees who were held in immigration detention facilities as at 31 December 2024.

Figure 1 – Population in Immigration Detention

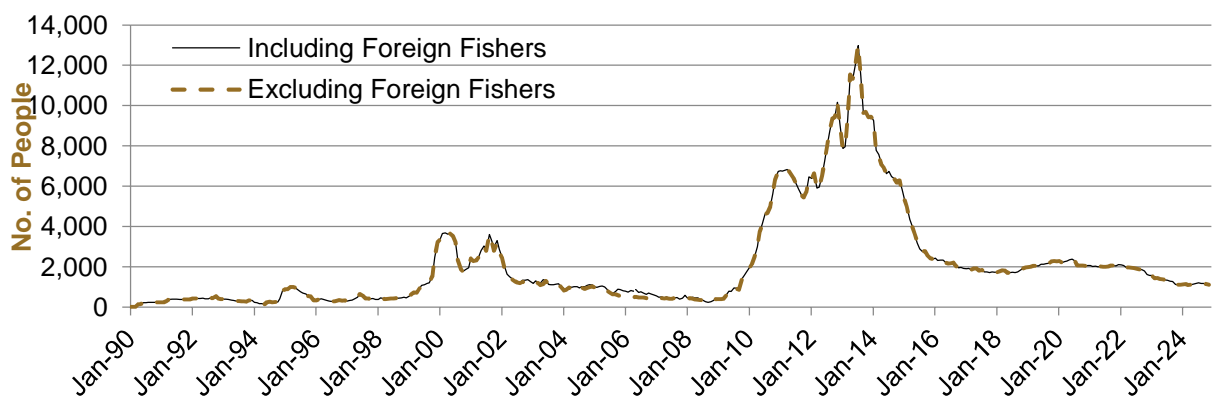


Figure 1 above, shows the number of people in immigration detention from 1990 to 2024.

People In Immigration Detention Facilities

Arrival Type

There were 152 people who arrived unlawfully by air or by boat, in held immigration detention facilities at 31 December 2024 representing 15.5 per cent of the total immigration detention population.

There were also 827 people (84.5 per cent of the total immigration detention population) who arrived in Australia lawfully and were subsequently taken into immigration detention for either overstaying or having their visas cancelled for reasons including failing the character test, breaching their visa conditions or presenting a risk to the safety, health or good order of the community.

Figure 2 – People in Held Immigration Detention Facilities by Detention Group

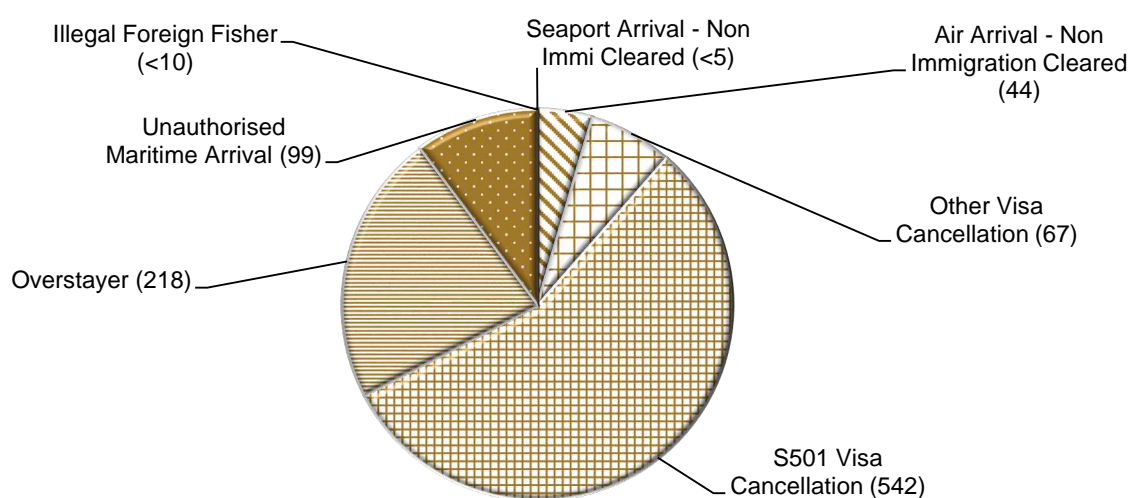


Figure 2 above, shows the number of people in held immigration detention facilities at 31 December 2024 by detention group, including Overstayers, S501 and Other Visa Cancellations, Unauthorised Maritime Arrivals, Unauthorised Air Arrivals, and if applicable – Illegal Foreign Fishers and Others such as stowaways and ship deserters.

Table 4 – People in Held Immigration Detention Facilities by Detention Group at 31 December 2024

Place of immigration detention by State*	S501 Visa Cancellation	UMA	Other Detention Group	Total	Change from 30/11/24
NSW					
Villawood IDC	236	39	131	406	+ 8
APODs	<5	0	<20	19	+ 7
VIC					
Melbourne IDC	83	20	79	182	- 8
APODs	8	<5	<5	<15	+ <5
QLD					
Brisbane IDC	88	5	18	111	- 12
APODs	8	0	5	13	- 6
SA					
Adelaide IDC	<10	<5	14	25	+ 3
APODs	0	0	0	0	0
WA					
Yongah Hill IDC	105	31	43	179	- 14
Perth IDC	<5	<5	14	17	+ 3
APODs	<5	0	<5	<5	+ <5
NT					
APODs	0	0	11	11	- 4
Total IDCs	523	<100	<300	920	- 20
Total APODs	19	<5	<40	59	+ 1
Total IDCs/APODs	542	99	338	979	- 19

* Refer to Notice on APODs on page 3.

Table 5 – People in Held Immigration Detention Facilities by Detention Group and Cohort at 31 December 2024

Detention Group	Men	Women	Children	Total	Change from 30/11/24
S501 Visa Cancellation	<515	<35	0	542	- 17
Unauthorised Maritime Arrival	99	0	0	99	- 5
Other	<315	<30	<5	338	+ 3
Total	920	<60	<5	979	- 19

People In Immigration Detention

Nationality

At 31 December 2024, there were 979 people in held immigration detention facilities. Of these 979 people, 19.2 per cent were from New Zealand, 6.4 per cent were from Iran, 5.9 per cent were from India, 5.6 per cent were from Vietnam and 4.8 per cent were from United Kingdom.

Table 6 – People in Held Immigration Detention Facilities by Nationality at 31 December 2024

Nationalities	Men	Women	Children	Total
New Zealand	172	16	0	188
Iran	63	0	0	63
India	58	0	0	58
Vietnam	48	7	0	55
United Kingdom	<45	<5	0	47
Tonga	<50	<5	0	46
Malaysia	<40	<5	0	39
China	<35	<5	0	34
Sri Lanka	<30	<5	0	31
Pakistan	29	0	0	29
Other	<370	21	<5	389
Total	920	<60	<5	979

At 31 December 2024, 155 were people living in the community after being approved for a residence determination. Of these 155 people, 45.8 per cent were from Iran, 8.4 per cent were Stateless, 7.1 per cent were from Sri Lanka, 7.1 per cent were from Somalia and 5.2 per cent were from Pakistan.

Table 7 – People in the Community under Residence Determination by Nationality at 31 December 2024

Nationalities	Men	Women	Children	Total
Iran	31	18	22	71
Stateless ¹	7	<5	<5	13
Sri Lanka	<5	<5	6	11
Somalia	<5	<5	<10	11
Pakistan	8	0	0	8
Other	20	9	12	41
Total	71	37	47	155

¹ The category of “Stateless” nationalities includes “claimed stateless” persons.

Children In Immigration Detention

At 31 December 2024, there were less than five children (aged less than 18 years) in Immigration Detention Facilities and Alternative Places of Detention.

Figure 3 – Children in Immigration Detention Facilities and Alternative Places of Detention

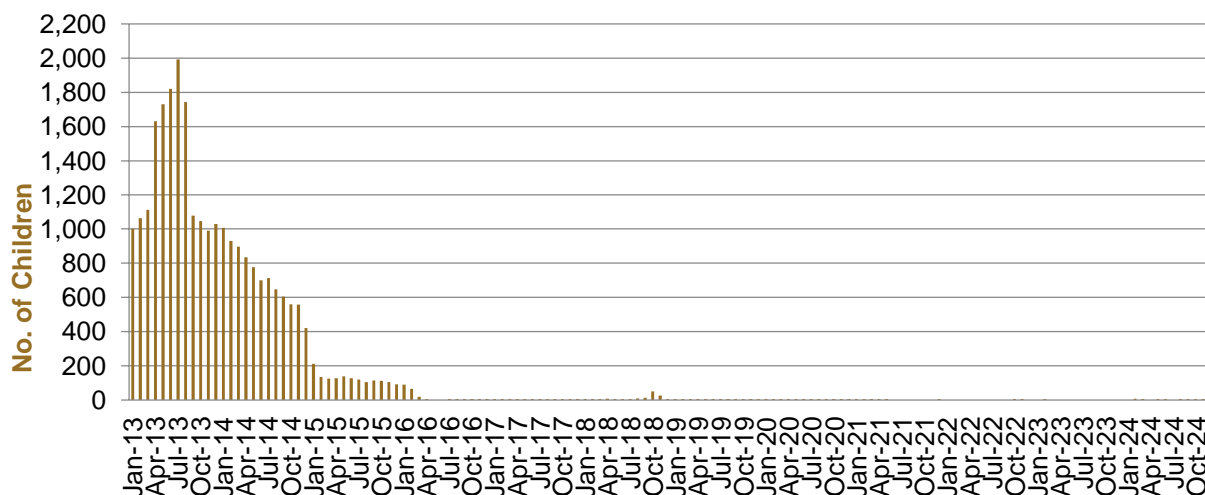


Figure 3 above, shows the number of children in IDFs and APODs from January 2013 to the date of this report. The continuous increase in the number of children in IDFs from April 2013 to Aug 2013 was due to a rapid increase in UMAs during this period. The number of children in IDFs continued to decline during the late 2013 and 2014, with further reduction in January 2015.

At 31 December 2024, the number of children living in the community after being approved for a residence determination has remained the same since the previous report at 47.

Figure 4 – Children in the Community under Residence Determination

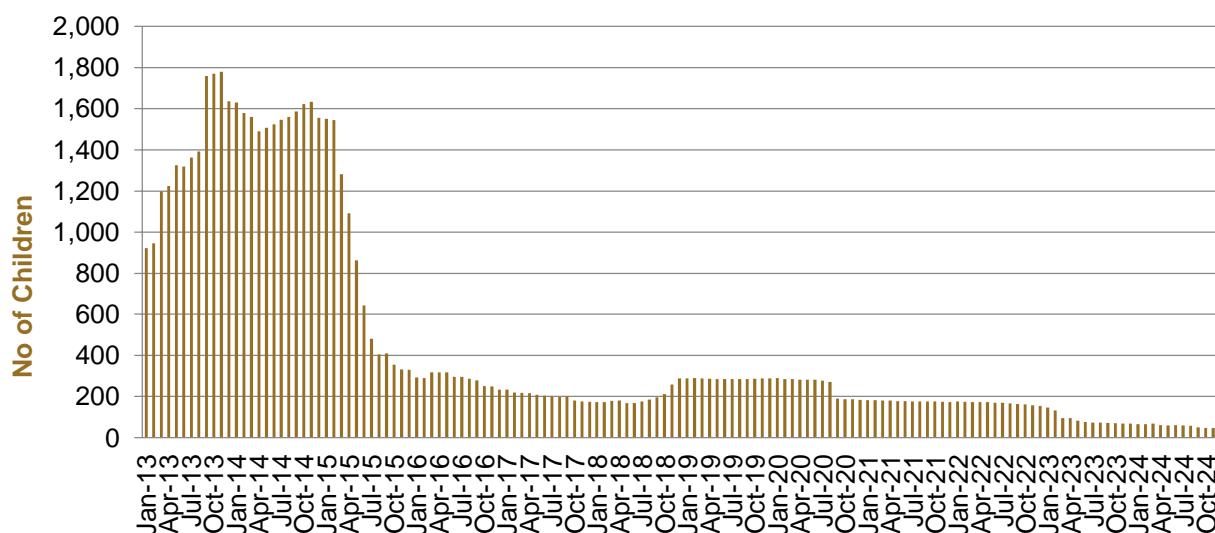


Figure 4 above, shows the number of children in the community under residence determination from January 2013 to the date of this report. The number of children in the community under residence determination, has levelled off at its lowest number since the peak in November 2013, as a result of releases into the community on Bridging Visa E.

Table 8 – Children in Immigration Detention at 31 December 2024

Placement Type	Children
Immigration Detention Centre	0
Alternative Places of Detention	<5
Total Facility	<5
Total in the Community under a Residence Determination	47

Time In Immigration Detention Facilities

At 31 December 2024, there were 979 people in immigration detention facilities.

Of these 979 people, 31.9 per cent had been detained for 91 days or less and 67.2 per cent had been detained for 365 days or less.

Table 9 – Length of Time of People in Held Immigration Detention Facilities at 31 December 2024

Period Detained	Total	% of Total
7 days or less	21	2.1%
8 days - 31 days	119	12.2%
32 days - 91 days	172	17.6%
92 days - 182 days	171	17.5%
183 days - 365 days	175	17.9%
366 days - 547 days	81	8.3%
548 days - 730 days	59	6.0%
731 days - 1095 days	53	5.4%
1096 days - 1460 days	33	3.4%
1461 days - 1825 days	32	3.3%
Greater than 1825 days	63	6.4%
Total	979	100%

At 31 December 2024, the average period of time for people held in detention facilities was 467 days.

Figure 5 – Average Number of Days of People in Held Immigration Detention Facilities only

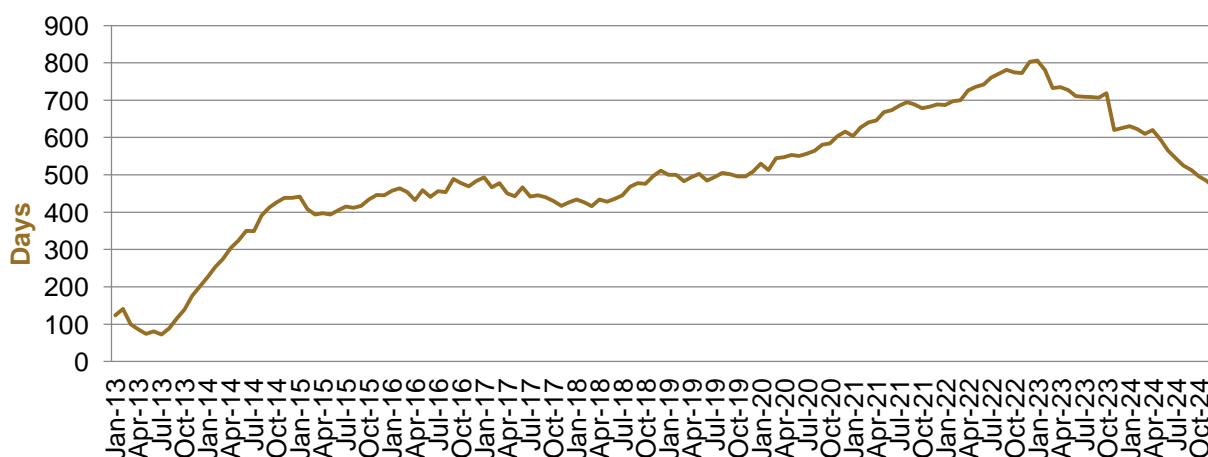


Figure 5 above, shows the average days in held immigration detention at the end of each month from January 2013 to the date of this report. The average period of time for people held in detention facilities steadily increased from July 2013 to January 2015. Between November 2018 and December 2019, the average number of days remained at around 500. Since January 2020, the average period of time for people held in detention facilities has steadily increased until January 2023, after which there has been an overall decrease.

The time an individual spends in immigration detention depends on a range of factors, including the complexity of their case, the legal processes they pursue and whether they voluntarily choose to leave Australia.

Time In Community Under Residence Determination

Of the 155 people in the community under residence determination, as at 31 December 2024, less than six per cent had been in the community for 91 days or less and less than 15.0 per cent had been in the community for 365 days or less.

Table 10 – Length of Time of People in Community under Residence Determination at 31 December 2024

Period Detained	Total	% of Total
7 days or less	<5	<3.0%
8 days - 31 days	0	0.0%
32 days - 91 days	<5	<3.0%
92 days - 182 days	<5	<3.0%
183 days - 365 days	13	8.4%
366 days - 547 days	5	3.2%
548 days - 730 days	12	7.7%
731 days - 1095 days	16	10.3%
1096 days - 1460 days	6	3.9%
1461 days - 1825 days	<5	<3.0%
Greater than 1825 days	97	62.6%
Total	155	100%