



Australian Government  
Department of Home Affairs



Australian  
**BORDER FORCE**

# Immigration Detention and Community Statistics Summary

November 2025 (released 23 December 2025)

# Table of Contents

<b>About this report .....</b>	<b>3</b>
<b>Enquiries .....</b>	<b>3</b>
<b>Acronyms .....</b>	<b>3</b>
<b>Notice on APODs .....</b>	<b>3</b>
<b>Notice on ITAs .....</b>	<b>3</b>
<b>Immigration Detention and Community Statistics Summary .....</b>	<b>4</b>
<b>In Community under Residence Determination Population by State/Territory .....</b>	<b>5</b>
<b>Immigration Detention Population.....</b>	<b>6</b>
<i>From January 1990 to Current.....</i>	<i>6</i>
<b>People In Immigration Detention Facilities.....</b>	<b>7</b>
<i>Arrival Type.....</i>	<i>7</i>
<b>People In Immigration Detention .....</b>	<b>9</b>
<i>Nationality .....</i>	<i>9</i>
<b>Children In Immigration Detention .....</b>	<b>10</b>
<b>Time In Immigration Detention Facilities .....</b>	<b>12</b>
<b>Time In Community Under Residence Determination .....</b>	<b>13</b>

## About this report

This report provides an overview of the number of people in onshore immigration detention, as at the morning of the first day following the end of the reporting month. The report is produced on a monthly basis.

As data is sourced from several departmental processing and recording systems, data relating to the immigration detention population is dynamic and variations between monthly reports can occur. Due to these issues, data from the current financial year should always be considered provisional.

Further information about immigration detention is available at:

<https://www.homeaffairs.gov.au/research-and-statistics/statistics/visa-statistics/live/immigration-detention>

## Enquiries

Comments or enquiries concerning this report should be sent using the Department's client service feedback form quoting the name and date of the report.

See: <https://immi.homeaffairs.gov.au/help-support/contact-us>

## Acronyms

**Table 1 – Acronyms used in this document**

Acronym	Description
APOD	Alternative Place of Detention
IDC/F	Immigration Detention Centre/Facility
ITA	Immigration Transit Accommodation
S501	Section 501 of the <i>Migration Act 1958</i> (the Migration Act)
S501 Visa Cancellation	Visa cancellations based on character or related grounds
UMA	Unauthorised Maritime Arrival

## Notice on APODs

From July 2020, detainees residing in APODs are reported under 'APODs' rather than under the IDC that had responsibility for their management and care. APODs include hospitals, aged-care facilities, mental health inpatient facilities, as well as hotel and apartment style accommodation. The number of individuals in APODs is broken down by the State and Territory of the APODs.

## Notice on ITAs

For reports released from July 2023 onwards, detainees residing within Immigration Transit Accommodation (ITA) facilities are reported under Immigration Detention Centres (IDCs). There is no change to the management and care of detainees within the affected ITAs.

# Immigration Detention and Community Statistics Summary

At 30 November 2025, there were 1011 people in immigration detention facilities, and of those, 925 (91.5 per cent) have a criminal history. A further 86 people were living in the community after being approved for residence determination.

The table below reflects figures based on records in Department of Home Affairs systems.

**Table 2 – People in Immigration Detention Centres (IDCs), Alternative Places of Detention (APODs) and the Community at 30 November 2025**

Place of immigration detention by State*	Men	Women	Children	Total	Change from 31/10/25
<b>NSW</b>					
Villawood IDC	401	47	0	<b>448</b>	+ 13
APODs	<10	0	0	<b>&lt;10</b>	+ <5
<b>VIC</b>					
Melbourne IDC	<165	<5	0	<b>163</b>	+ 2
APODs	<5	<10	0	<b>10</b>	- 4
<b>QLD</b>					
Brisbane IDC	121	0	0	<b>121</b>	- 11
APODs	<20	<5	0	<b>20</b>	- 7
<b>SA</b>					
Adelaide IDC	<20	<5	0	<b>19</b>	- 5
APODs	0	0	0	<b>0</b>	0
<b>WA</b>					
Yongah Hill IDC	196	0	0	<b>196</b>	+ 16
Perth IDC	8	6	0	<b>14</b>	+ 2
APODs	<5	0	0	<b>&lt;5</b>	- <5
<b>NT</b>					
APODs	<10	<5	0	<b>10</b>	- <5
<b>Total IDCs</b>	<b>906</b>	<b>55</b>	<b>0</b>	<b>961</b>	<b>+ 17</b>
<b>Total APODs</b>	<b>36</b>	<b>14</b>	<b>0</b>	<b>50</b>	<b>- 11</b>
<b>Total IDCs/APODs</b>	<b>942</b>	<b>69</b>	<b>0</b>	<b>1,011</b>	<b>+ 6</b>
<b>Total in Community under Residence Determination</b>	<b>45</b>	<b>22</b>	<b>24</b>	<b>91</b>	<b>- 3</b>

\* Refer to Notice on APODs on page 3.

## In Community under Residence Determination Population by State/Territory

Of the 91 people approved for a residence determination to live in the community, 50.5 per cent were in Victoria, 39.6 per cent in Queensland, less than 10.0 per cent in New South Wales and less than 5.0 per cent in Western Australia.

**Table 3 – People in the Community under Residence Determination by State/Territory at 30 November 2025**

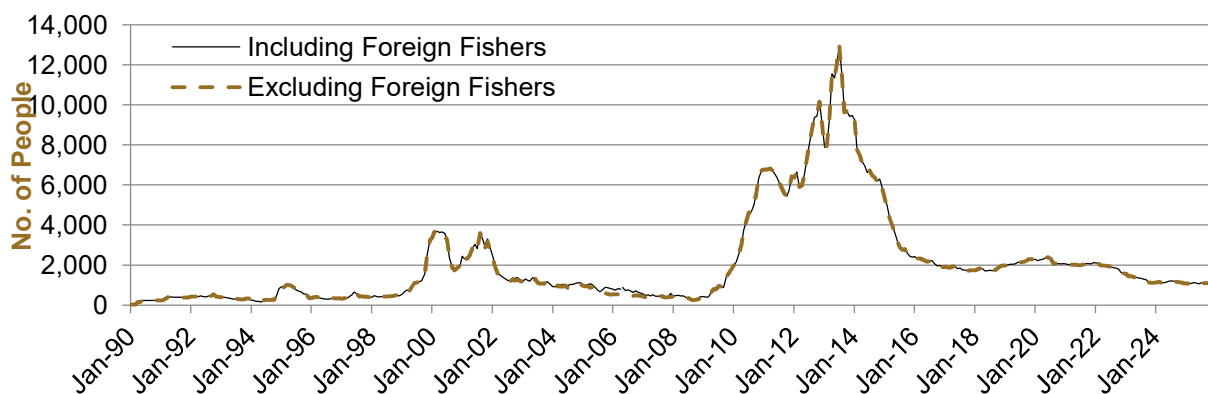
State/Territory	Men	Women	Children	Total
New South Wales	<10	<5	<5	<b>&lt;10</b>
Victoria	19	14	13	<b>46</b>
Queensland	19	<10	<15	<b>36</b>
Western Australia	<5	0	0	<b>&lt;5</b>
<b>Total</b>	<b>45</b>	<b>22</b>	<b>24</b>	<b>91</b>

# Immigration Detention Population

## From January 1990 to Current

The overall number of people in immigration detention including in the community under residence determination has decreased by 60 to 1102, compared with 1162 at the end of November 2024. This number considers detainees in the community under residence determination and detainees who were held in immigration detention facilities as at 30 November 2025.

**Figure 1 – Population in Immigration Detention**



**Figure 1** above, shows the number of people in immigration detention from 1990 to 2025.

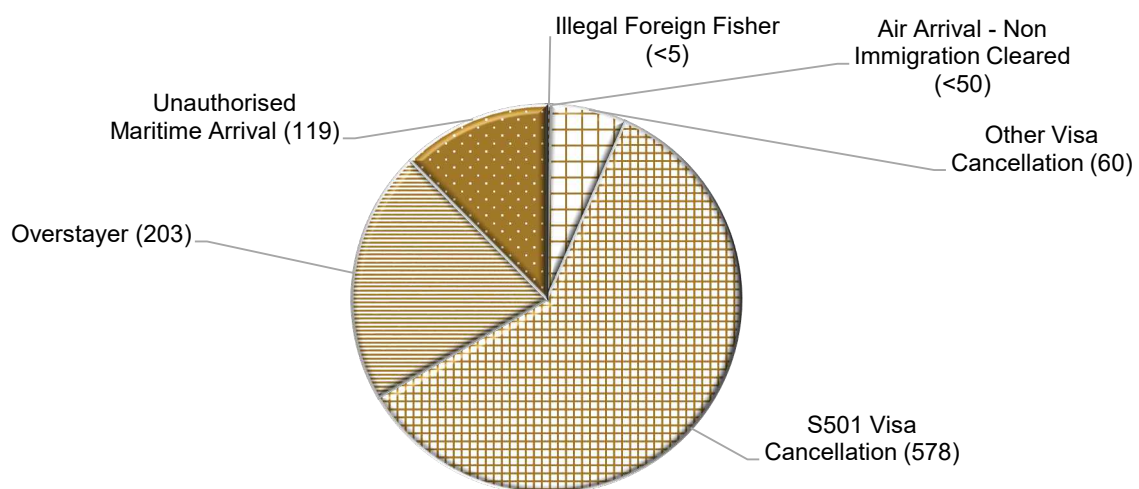
# People In Immigration Detention Facilities

## Arrival Type

There were 170 people who arrived unlawfully by air or by boat, in held immigration detention facilities at 30 November 2025 representing 16.8 per cent of the total immigration detention population.

There were also 841 people (83.2 per cent of the total immigration detention population) who arrived in Australia lawfully and were subsequently taken into immigration detention for either overstaying or having their visas cancelled for reasons including failing the character test, breaching their visa conditions or presenting a risk to the safety, health or good order of the community.

**Figure 2 – People in Held Immigration Detention Facilities by Detention Group**



**Figure 2** above, shows the number of people in held immigration detention facilities at 30 November 2025 by detention group, including Overstayers, S501 and Other Visa Cancellations, Unauthorised Maritime Arrivals, Unauthorised Air Arrivals, and if applicable – Illegal Foreign Fishers and Others such as stowaways and ship deserters.

**Table 4 – People in Held Immigration Detention Facilities by Detention Group at 30 November 2025**

Place of immigration detention by State*	S501 Visa Cancellation	UMA	Other Detention Group	Total	Change from 31/10/25
<b>NSW</b>					
Villawood IDC	255	43	150	<b>448</b>	+ 13
APODs	<5	<5	<10	<b>&lt;10</b>	+ <5
<b>VIC</b>					
Melbourne IDC	86	26	51	<b>163</b>	+ 2
APODs	<5	0	<10	<b>10</b>	- 4
<b>QLD</b>					
Brisbane IDC	92	<5	<30	<b>121</b>	- 11
APODs	15	0	5	<b>20</b>	- 7
<b>SA</b>					
Adelaide IDC	12	<5	<10	<b>19</b>	- 5
APODs	0	0	0	<b>0</b>	0
<b>WA</b>					
Yongah Hill IDC	105	36	55	<b>196</b>	+ 16
Perth IDC	8	<5	<5	<b>14</b>	+ 2
APODs	0	<5	0	<b>&lt;5</b>	- <5
<b>NT</b>					
APODs	0	<10	<10	<b>10</b>	- <5
<b>Total IDCs</b>	<b>558</b>	<b>112</b>	<b>291</b>	<b>961</b>	<b>+ 17</b>
<b>Total APODs</b>	<b>20</b>	<b>7</b>	<b>23</b>	<b>50</b>	<b>- 11</b>
<b>Total IDCs/APODs</b>	<b>578</b>	<b>119</b>	<b>314</b>	<b>1,011</b>	<b>+ 6</b>

\* Refer to Notice on APODs on page 3.

**Table 5 – People in Held Immigration Detention Facilities by Detention Group and Cohort at 30 November 2025**

Detention Group	Men	Women	Children	Total	Change from 31/10/25
S501 Visa Cancellation	545	33	0	<b>578</b>	- 4
Unauthorised Maritime Arrival	<120	<5	0	<b>119</b>	+ 4
Other	<285	<35	0	<b>314</b>	+ 6
<b>Total</b>	<b>942</b>	<b>69</b>	<b>0</b>	<b>1,011</b>	<b>+ 6</b>



# People In Immigration Detention

## Nationality

At 30 November 2025, there were 1011 people in held immigration detention facilities. Of these 1011 people, 16.7 per cent were from New Zealand, 8.2 per cent were from Iran, 6.5 per cent were from India, 5.9 per cent were from United Kingdom, and 3.9 per cent were from China.

**Table 6 – People in Held Immigration Detention Facilities by Nationality at 30 November 2025**

Nationalities	Men	Women	Children	Total
New Zealand	146	23	0	<b>169</b>
Iran	83	0	0	<b>83</b>
India	<70	<5	0	<b>66</b>
United Kingdom	<60	<5	0	<b>60</b>
China	32	7	0	<b>39</b>
Iraq	37	0	0	<b>37</b>
Tonga	<40	<5	0	<b>37</b>
Vietnam	<35	<5	0	<b>33</b>
Fiji	<30	<5	0	<b>30</b>
Sri Lanka	<30	<5	0	<b>27</b>
Other	403	27	0	<b>430</b>
<b>Total</b>	<b>942</b>	<b>69</b>	<b>0</b>	<b>1,011</b>

At 30 November 2025, 91 were people living in the community after being approved for a residence determination. Of these 91 people, 42.9 per cent were from Iran, 9.9 per cent were from Somalia, 8.8 per cent were Stateless, 6.6 per cent were from Pakistan and 6.6 per cent were Sri Lanka.

**Table 7 – People in the Community under Residence Determination by Nationality at 30 November 2025**

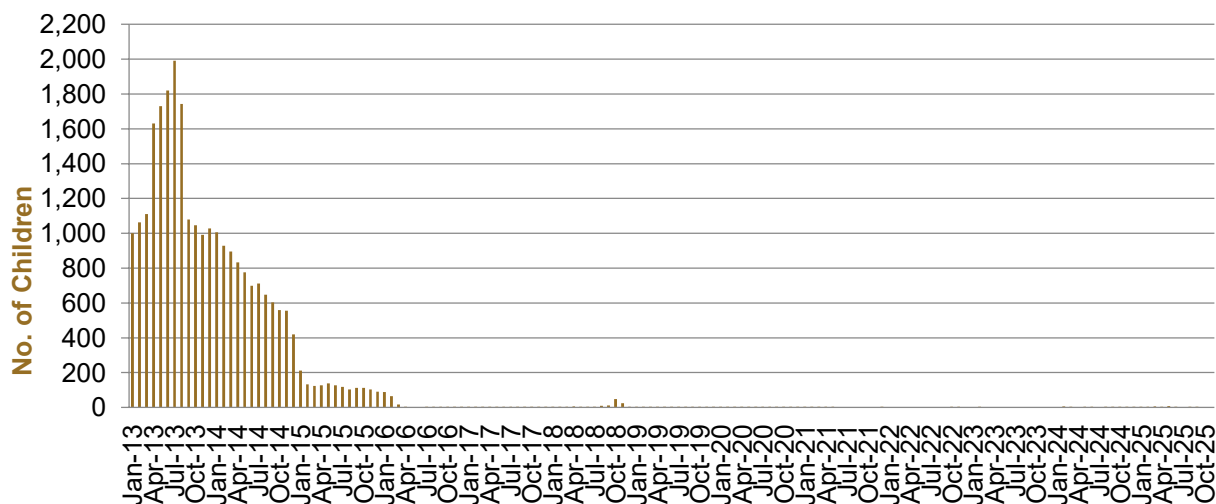
Nationalities	Men	Women	Children	Total
Iran	16	12	11	<b>39</b>
Somalia	<5	<5	5	<b>9</b>
Stateless <sup>1</sup>	5	<5	<5	<b>8</b>
Pakistan	6	0	0	<b>6</b>
Sri Lanka	<5	<5	<5	<b>6</b>
Other	14	<10	<5	<b>23</b>
<b>Total</b>	<b>45</b>	<b>22</b>	<b>24</b>	<b>91</b>

<sup>1</sup> The category of “Stateless” nationalities includes “claimed stateless” persons.

# Children In Immigration Detention

At 30 November 2025, there were no children (aged less than 18 years) in Immigration Detention Facilities and Alternative Places of Detention.

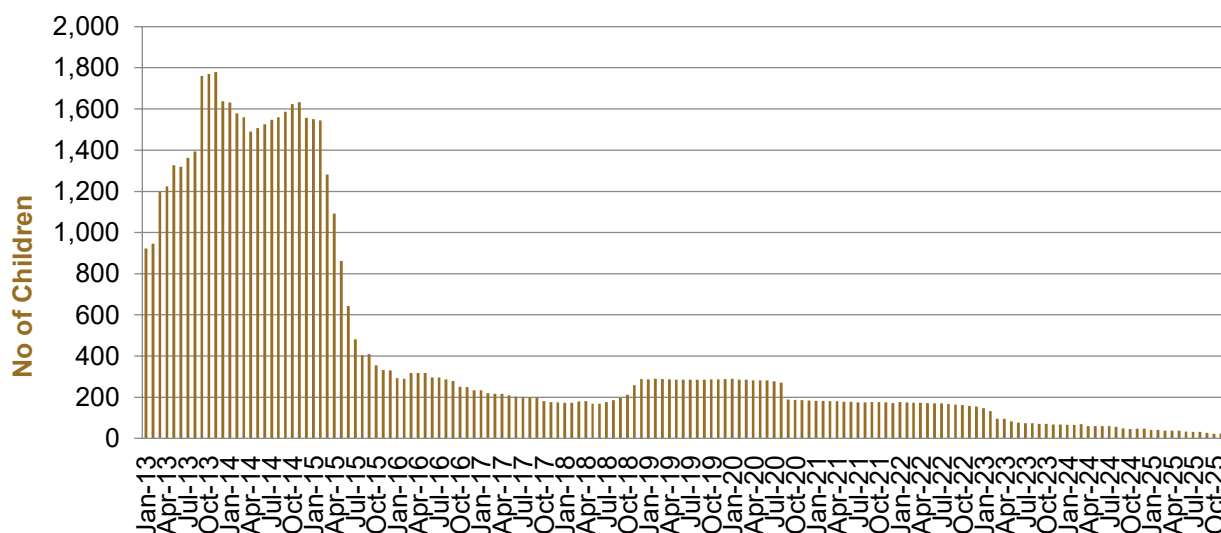
**Figure 3 – Children in Immigration Detention Facilities and Alternative Places of Detention**



**Figure 3** above, shows the number of children in IDFs and APODs from January 2013 to the date of this report. The continuous increase in the number of children in IDFs from April 2013 to Aug 2013 was due to a rapid increase in UMAs during this period. The number of children in IDFs continued to decline during late 2013 and 2014, with further reduction in January 2015.

At 30 November 2025, the number of children living in the community after being approved for a residence determination has increased by one (1) to 24 from 23 since the previous report.

**Figure 4 – Children in the Community under Residence Determination**



**Figure 4** above, shows the number of children in the community under residence determination from January 2013 to the date of this report. The number of children in the community under residence determination, has levelled off at its lowest number since the peak in November 2013, as a result of releases into the community on Bridging Visa E.

**Table 8 – Children in Immigration Detention at 30 November 2025**

Placement Type	Children
Immigration Detention Centre	0
Alternative Places of Detention	0
<b>Total Facility</b>	<b>0</b>
<b>Total in the Community under a Residence Determination</b>	<b>24</b>

# Time In Immigration Detention Facilities

At 30 November 2025, there were 1011 people in immigration detention facilities.

Of these 1011 people, 31.2 per cent had been detained for 91 days or less and 66.1 per cent had been detained for 365 days or less.

**Table 9 – Length of Time of People in Held Immigration Detention Facilities at 30 November 2025**

Period Detained	Total	% of Total
7 days or less	38	3.8%
8 days - 31 days	112	11.1%
32 days - 91 days	165	16.3%
92 days - 182 days	159	15.7%
183 days - 365 days	194	19.2%
366 days - 547 days	122	12.1%
548 days - 730 days	45	4.5%
731 days - 1095 days	58	5.7%
1096 days - 1460 days	30	3.0%
1461 days - 1825 days	20	2.0%
Greater than 1825 days	68	6.7%
<b>Total</b>	<b>1,011</b>	<b>100%</b>

At 30 November 2025, the average period of time for people held in detention facilities was 466 days.

**Figure 5 – Average Number of Days of People in Held Immigration Detention Facilities**

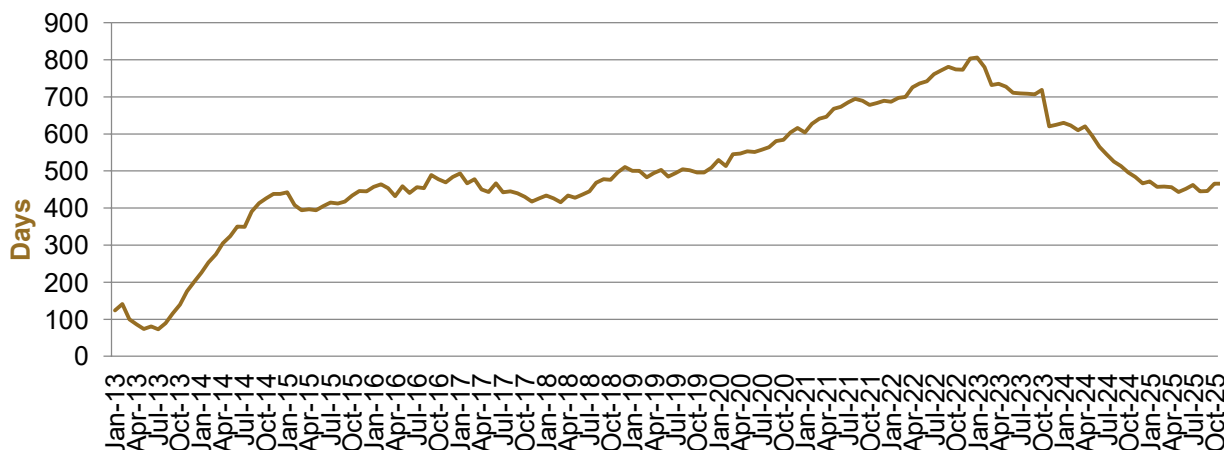


Figure 5 above, shows the average days in held immigration detention at the end of each month from January 2013 to the date of this report. The average period of time for people held in detention facilities steadily increased from July 2013 to January 2015. Between November 2018 and December 2019, the average number of days remained at around 500. Since January 2020, the average period of time for people held in detention facilities has steadily increased until January 2023, after which there has been an overall decrease.

The time an individual spends in immigration detention depends on a range of factors, including the complexity of their case, the legal processes they pursue and whether they voluntarily choose to leave Australia.

## Time In Community Under Residence Determination

Of the 91 people in the community under residence determination, as at 30 November 2025, less than 5.0 per cent had been in the community for 91 days or less and less than 14.0 per cent had been in the community for 365 days or less.

**Table 10 – Length of Time of People in Community under Residence Determination at 30 November 2025**

Period Detained	Total	% of Total
7 days or less	0	0.0%
8 days - 31 days	0	0.0%
32 days - 91 days	<5	<5.0%
92 days - 182 days	<5	<5.0%
183 days - 365 days	<5	<5.0%
366 days - 547 days	<5	<5.0%
548 days - 730 days	0	0.0%
731 days - 1095 days	13	14.3%
1096 days - 1460 days	7	7.7%
1461 days - 1825 days	<5	<5.0%
Greater than 1825 days	60	65.9%
<b>Total</b>	<b>91</b>	<b>100%</b>