



Australian Government  
Department of Home Affairs



Australian  
**BORDER FORCE**

# Immigration Detention and Community Statistics Summary

February 2026 (released 31 March 2026)

# Table of Contents

- About this report ..... 3**
- Enquiries ..... 3**
- Acronyms ..... 3**
- Notice on APODs ..... 3**
- Notice on ITAs ..... 3**
- Immigration Detention and Community Statistics Summary ..... 4**
- In Community under Residence Determination Population by State/Territory ..... 5**
- Immigration Detention Population..... 6**
  - From January 1990 to Current..... 6*
- People In Immigration Detention Facilities..... 7**
  - Arrival Type..... 7*
- People In Immigration Detention ..... 9**
  - Nationality ..... 9*
- Children In Immigration Detention ..... 10**
- Time In Immigration Detention Facilities ..... 12**
- Time In Community Under Residence Determination ..... 13**

## About this report

This report provides an overview of the number of people in onshore immigration detention, as at the morning of the first day following the end of the reporting month. The report is produced on a monthly basis.

As data is sourced from several departmental processing and recording systems, data relating to the immigration detention population is dynamic and variations between monthly reports can occur. Due to these issues, data from the current financial year should always be considered provisional.

Further information about immigration detention is available at:

<https://www.homeaffairs.gov.au/research-and-statistics/statistics/visa-statistics/live/immigration-detention>

## Enquiries

Comments or enquiries concerning this report should be sent using the Department's client service feedback form quoting the name and date of the report.

See: <https://immi.homeaffairs.gov.au/help-support/contact-us>

## Acronyms

**Table 1 – Acronyms used in this document**

Acronym	Description
APOD	Alternative Place of Detention
IDC/F	Immigration Detention Centre/Facility
ITA	Immigration Transit Accommodation
S501	Section 501 of the <i>Migration Act 1958</i> (the Migration Act)
S501 Visa Cancellation	Visa cancellations based on character or related grounds
UMA	Unauthorised Maritime Arrival

## Notice on APODs

From July 2020, detainees residing in APODs are reported under 'APODs' rather than under the IDC that had responsibility for their management and care. APODs include hospitals, aged-care facilities, mental health inpatient facilities, as well as hotel and apartment style accommodation. The number of individuals in APODs is broken down by the State and Territory of the APODs.

## Notice on ITAs

For reports released from July 2023 onwards, detainees residing within Immigration Transit Accommodation (ITA) facilities are reported under Immigration Detention Centres (IDCs). There is no change to the management and care of detainees within the affected ITAs.

# Immigration Detention and Community Statistics Summary

At 28 February 2026, there were 1054 people in immigration detention facilities, and of those, 939 (89.1 per cent) have a criminal history. A further 84 people were living in the community after being approved for residence determination.

The table below reflects figures based on records in Department of Home Affairs systems.

**Table 2 – People in Immigration Detention Centres (IDCs), Alternative Places of Detention (APODs) and the Community at 28 February 2026**

Place of immigration detention by State*	Men	Women	Children	Total	Change from 31/01/26
<b>NSW</b>					
Villawood IDC	390	57	0	<b>447</b>	- 16
APODs	<10	<5	<10	<b>18</b>	+ <5
<b>VIC</b>					
Melbourne IDC	<180	<10	0	<b>176</b>	+ 3
APODs	<5	<10	0	<b>12</b>	+ 4
<b>QLD</b>					
Brisbane IDC	122	0	0	<b>122</b>	+ 2
APODs	26	<5	<5	<b>29</b>	- 1
<b>SA</b>					
Adelaide IDC	<20	<5	0	<b>19</b>	- 2
APODs	0	<5	0	<b>&lt;5</b>	+ 1
<b>WA</b>					
Yongah Hill IDC	212	0	0	<b>212</b>	+ 6
Perth IDC	<10	<10	0	<b>13</b>	+ 2
APODs	<5	<5	0	<b>&lt;5</b>	- <5
<b>NT</b>					
APODs	<5	0	0	<b>&lt;5</b>	+ <5
<b>Total IDCs</b>	<b>924</b>	<b>65</b>	<b>0</b>	<b>989</b>	<b>- 5</b>
<b>Total APODs</b>	<b>42</b>	<b>13</b>	<b>10</b>	<b>65</b>	<b>+ 9</b>
<b>Total IDCs/APODs</b>	<b>966</b>	<b>78</b>	<b>10</b>	<b>1,054</b>	<b>+ 4</b>
<b>Total in Community under Residence Determination</b>	<b>42</b>	<b>20</b>	<b>22</b>	<b>84</b>	<b>0</b>

\* Refer to Notice on APODs on page 3.

## In Community under Residence Determination Population by State/Territory

Of the 84 people approved for a residence determination to live in the community, 51.2 per cent were in Victoria, 40.5 per cent in Queensland, less than 10.0 per cent in New South Wales and less than 5.0 per cent in Western Australia.

**Table 3 – People in the Community under Residence Determination by State/Territory at 28 February 2026**

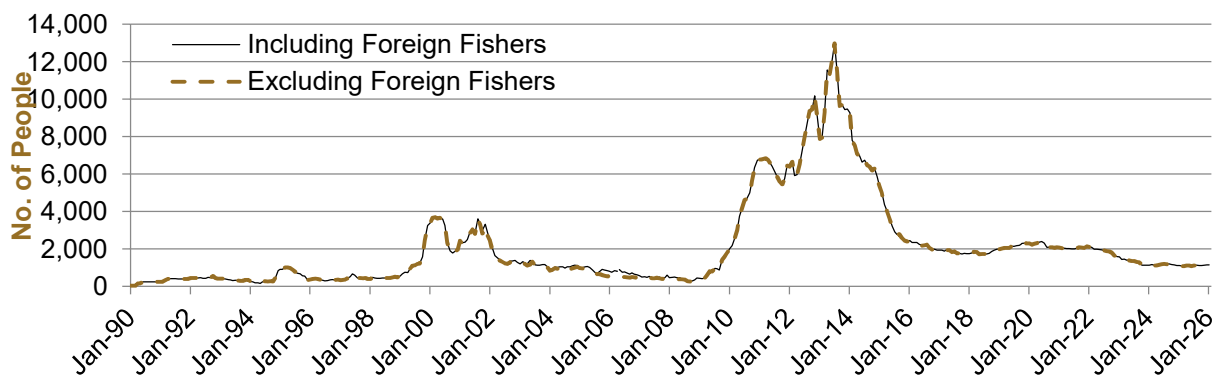
State/Territory	Men	Women	Children	Total
New South Wales	<5	<5	<5	<b>&lt;10</b>
Victoria	18	14	11	<b>43</b>
Queensland	19	<10	<15	<b>34</b>
Western Australia	<5	0	0	<b>&lt;5</b>
<b>Total</b>	<b>42</b>	<b>20</b>	<b>22</b>	<b>84</b>

# Immigration Detention Population

## From January 1990 to Current

The overall number of people in immigration detention including in the community under residence determination has increased by 34 to 1138, compared with 1104 at the end of February 2025. This number considers detainees in the community under residence determination and detainees who were held in immigration detention facilities as at 28 February 2026.

**Figure 1 – Population in Immigration Detention**



**Figure 1** above, shows the number of people in immigration detention from 1990 to 2026.

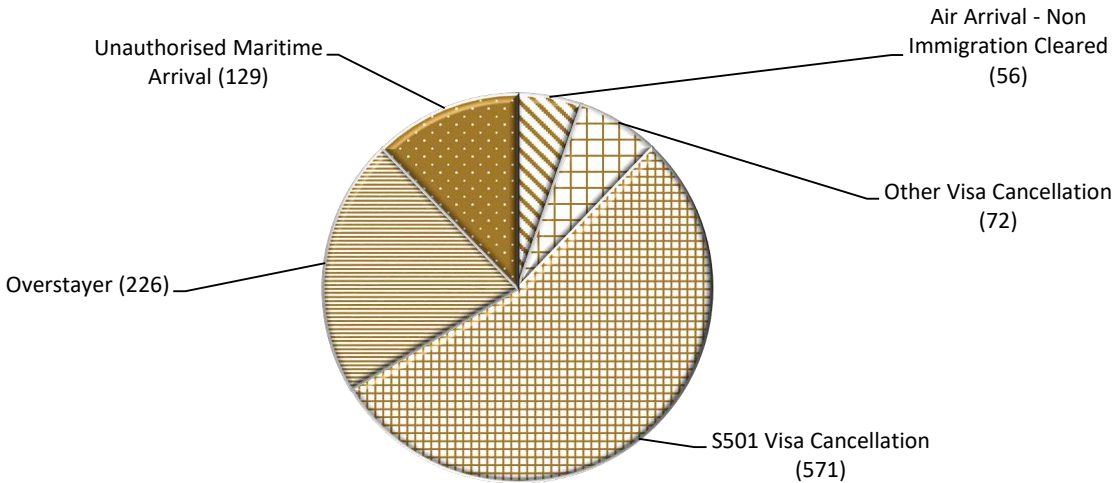
# People In Immigration Detention Facilities

## Arrival Type

There were 185 people who arrived unlawfully by air or by boat, in held immigration detention facilities at 28 February 2026 representing 17.6 per cent of the total immigration detention population.

There were also 869 people (82.4 per cent of the total immigration detention population) who arrived in Australia lawfully and were subsequently taken into immigration detention for either overstaying or having their visas cancelled for reasons including failing the character test, breaching their visa conditions or presenting a risk to the safety, health or good order of the community.

**Figure 2 – People in Held Immigration Detention Facilities by Detention Group**



**Figure 2** above, shows the number of people in held immigration detention facilities at 28 February 2026 by detention group, including Overstayers, S501 and Other Visa Cancellations, Unauthorised Maritime Arrivals, Unauthorised Air Arrivals, and if applicable – Illegal Foreign Fishers and Others such as stowaways and ship deserters.

**Table 4 – People in Held Immigration Detention Facilities by Detention Group at 28 February 2026**

Place of immigration detention by State*	S501 Visa Cancellation	UMA	Other Detention Group	Total	Change from 31/01/26
<b>NSW</b>					
Villawood IDC	242	41	164	<b>447</b>	- 16
APODs	<5	<15	<5	<b>18</b>	+ <5
<b>VIC</b>					
Melbourne IDC	86	<30	<65	<b>176</b>	+ 3
APODs	<5	0	<10	<b>12</b>	+ 4
<b>QLD</b>					
Brisbane IDC	89	<5	<35	<b>122</b>	+ 2
APODs	<25	0	<10	<b>29</b>	- 1
<b>SA</b>					
Adelaide IDC	11	<5	<10	<b>19</b>	- 2
APODs	0	0	<5	<b>&lt;5</b>	+ 1
<b>WA</b>					
Yongah Hill IDC	107	41	64	<b>212</b>	+ 6
Perth IDC	8	<5	<5	<b>13</b>	+ 2
APODs	0	0	<5	<b>&lt;5</b>	- <5
<b>NT</b>					
APODs	0	<5	<5	<b>&lt;5</b>	+ <5
<b>Total IDCs</b>	<b>543</b>	<b>117</b>	<b>329</b>	<b>989</b>	<b>- 5</b>
<b>Total APODs</b>	<b>28</b>	<b>12</b>	<b>25</b>	<b>65</b>	<b>+ 9</b>
<b>Total IDCs/APODs</b>	<b>571</b>	<b>129</b>	<b>354</b>	<b>1,054</b>	<b>+ 4</b>

\* Refer to Notice on APODs on page 3.

**Table 5 – People in Held Immigration Detention Facilities by Detention Group and Cohort at 28 February 2026**

Detention Group	Men	Women	Children	Total	Change from 31/01/26
S501 Visa Cancellation	540	31	0	<b>571</b>	- 11
Unauthorised Maritime Arrival	119	<5	<10	<b>129</b>	+ 6
Other	307	<50	<5	<b>354</b>	+ 9
<b>Total</b>	<b>966</b>	<b>78</b>	<b>10</b>	<b>1,054</b>	<b>+ 4</b>

# People In Immigration Detention

## Nationality

At 28 February 2026, there were 1054 people in held immigration detention facilities. Of these 1054 people, 14.8 per cent were from New Zealand, 7.8 per cent were from Iran, 7.6 per cent were from India, 6.7 per cent were from United Kingdom, and 3.9 per cent were from China.

**Table 6 – People in Held Immigration Detention Facilities by Nationality at 28 February 2026**

Nationalities	Men	Women	Children	Total
New Zealand	140	16	0	<b>156</b>
Iran	82	0	0	<b>82</b>
India	<80	<5	0	<b>80</b>
United Kingdom	<70	<10	<5	<b>71</b>
China	31	10	0	<b>41</b>
Iraq	34	0	0	<b>34</b>
Fiji	<35	<5	0	<b>34</b>
Vietnam	<35	<5	0	<b>33</b>
Sri Lanka	27	<5	<5	<b>30</b>
Tonga	27	0	0	<b>27</b>
Other	419	<40	<10	<b>466</b>
<b>Total</b>	<b>966</b>	<b>78</b>	<b>10</b>	<b>1,054</b>

At 28 February 2026, 84 were people living in the community after being approved for a residence determination. Of these 84 people, 41.7 per cent were from Iran, 10.7 per cent were from Somalia, 9.5 per cent were Stateless, 7.1 per cent were from Pakistan and 7.1 per cent were Sri Lanka.

**Table 7 – People in the Community under Residence Determination by Nationality at 28 February 2026**

Nationalities	Men	Women	Children	Total
Iran	16	10	9	<b>35</b>
Somalia	<5	<5	5	<b>9</b>
Stateless <sup>1</sup>	5	<5	<5	<b>8</b>
Pakistan	6	0	0	<b>6</b>
Sri Lanka	<5	<5	<5	<b>6</b>
Other	11	<10	<5	<b>20</b>
<b>Total</b>	<b>42</b>	<b>20</b>	<b>22</b>	<b>84</b>

<sup>1</sup> The category of “Stateless” nationalities includes “claimed stateless” persons.

# Children In Immigration Detention

At 28 February 2026 there were 10 children (aged less than 18 years) in Immigration Detention Facilities and Alternative Places of Detention.

**Figure 3 – Children in Immigration Detention Facilities and Alternative Places of Detention**

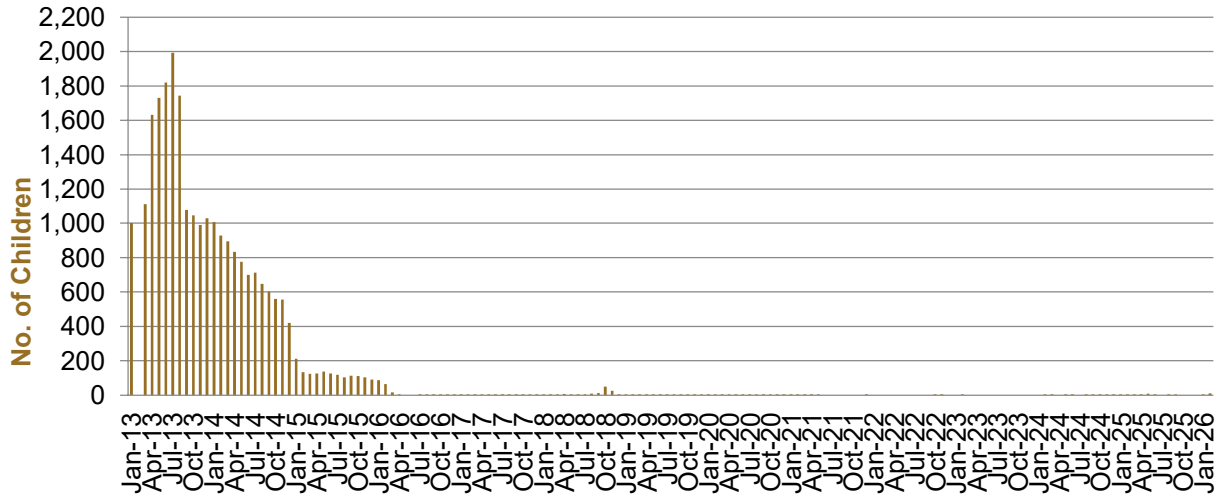


Figure 3 above, shows the number of children in IDFs and APODs from January 2013 to the date of this report. The continuous increase in the number of children in IDFs from April 2013 to Aug 2013 was due to a rapid increase in UMAs during this period. The number of children in IDFs continued to decline during late 2013 and 2014, with further reduction in January 2015.

At 28 February 2026, the number of children living in the community after being approved for a residence determination has remained the same since the previous report at 22.

**Figure 4 – Children in the Community under Residence Determination**

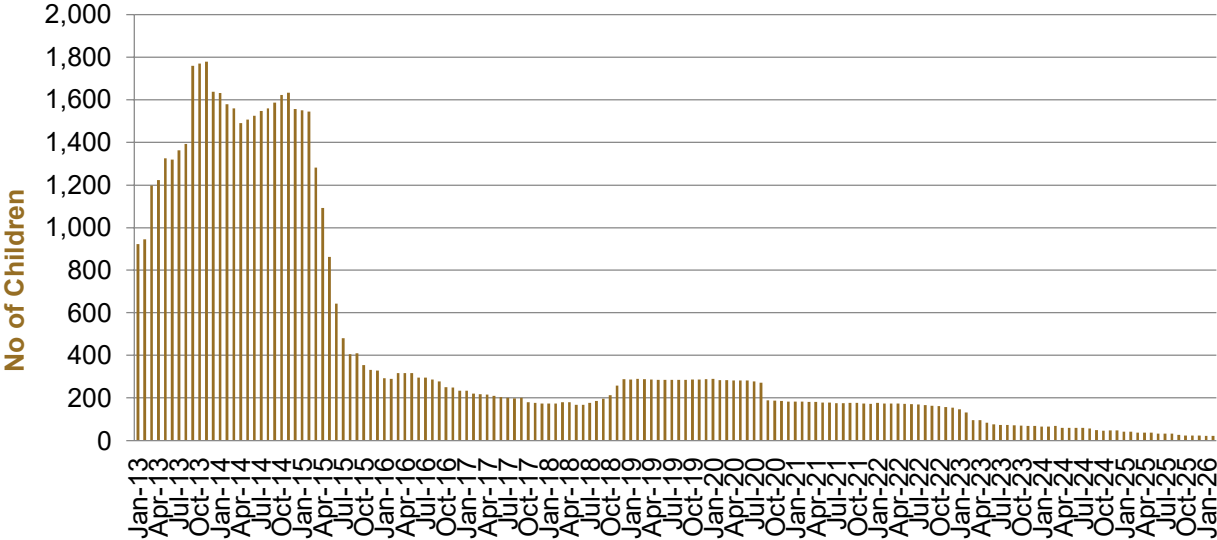


Figure 4 above, shows the number of children in the community under residence determination from January 2013 to the date of this report. The number of children in the community under residence determination, has levelled off at its lowest number since the peak in November 2013, as a result of releases into the community on Bridging Visa E.

**Table 8 – Children in Immigration Detention at 28 February 2026**

Placement Type	Children
Immigration Detention Centre	0
Alternative Places of Detention	10
<b>Total Facility</b>	<b>10</b>
<b>Total in the Community under a Residence Determination</b>	<b>22</b>

# Time In Immigration Detention Facilities

At 28 February 2026, there were 1054 people in immigration detention facilities.

Of these 1054 people, 31.2 per cent had been detained for 91 days or less and 65.2 per cent had been detained for 365 days or less.

**Table 9 – Length of Time of People in Held Immigration Detention Facilities at 28 February 2026**

Period Detained (consecutive days)	Total	% of Total
7 days or less	48	4.6%
8 days - 31 days	105	10.0%
32 days - 91 days	176	16.7%
92 days - 182 days	165	15.7%
183 days - 365 days	193	18.3%
366 days - 547 days	108	10.2%
548 days - 730 days	82	7.8%
731 days - 1095 days	64	6.1%
1096 days - 1460 days	28	2.7%
1461 days - 1825 days	18	1.7%
Greater than 1825 days	67	6.4%
<b>Total</b>	<b>1,054</b>	<b>100%</b>

At 28 February 2026, the average period of time for people held in detention facilities was 458 days (consecutive).

**Figure 5 – Average Number of Days of People in Held Immigration Detention Facilities**

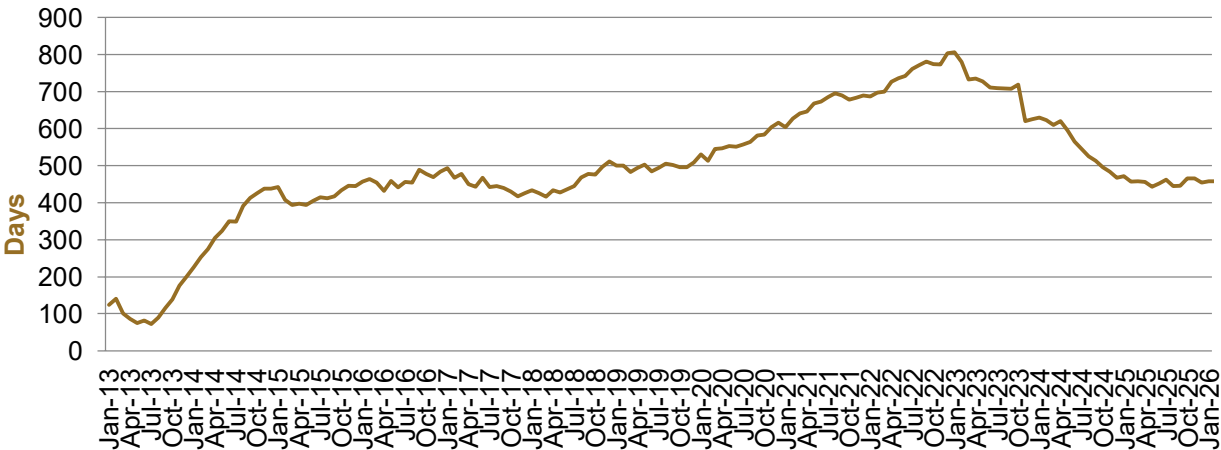


Figure 5 above, shows the average days in held immigration detention at the end of each month from January 2013 to the date of this report. The average period of time for people held in detention facilities steadily increased from July 2013 to January 2015. Between November 2018 and December 2019, the average number of days remained at around 500. Since January 2020, the average period of time for people held in detention facilities has steadily increased until January 2023, after which there has been an overall decrease.

The time an individual spends in immigration detention depends on a range of factors including the individual circumstances of the case. Factors that may impact on detention timeframes include ongoing status resolution matters, outstanding administrative or legal review processes, and removal planning processes.

## Time In Community Under Residence Determination

Of the 84 people in the community under residence determination, as at 28 February 2026, none had been in the community for 91 days or less and less than 10.0 per cent had been in the community for 365 days or less.

**Table 10 – Length of Time of People in Community under Residence Determination at 28 February 2026**

Period Detained (consecutive days)	Total	% of Total
7 days or less	0	0.0%
8 days - 31 days	0	0.0%
32 days - 91 days	0	0.0%
92 days - 182 days	<5	<5.0%
183 days - 365 days	5	6.0%
366 days - 547 days	<5	<5.0%
548 days - 730 days	0	0.0%
731 days - 1095 days	8	9.5%
1096 days - 1460 days	9	10.7%
1461 days - 1825 days	<5	<5.0%
Greater than 1825 days	56	66.7%
<b>Total</b>	<b>84</b>	<b>100%</b>