

# **PORTFOLIO OVERVIEW**



# IMMIGRATION AND BORDER PROTECTION PORTFOLIO OVERVIEW

## Minister(s) and portfolio responsibilities

The portfolio has two Ministers, the Hon Peter Dutton MP, the Minister for Immigration and Border Protection, and Senator, the Hon Michaelia Cash, Assistant Minister for Immigration and Border Protection.

From 1 July 2015, the Department of Immigration and Border Protection (DIBP) and the Australian Customs and Border Protection Service (ACBPS) will be consolidated into a single Department, and a single frontline operational entity, the Australian Border Force (ABF), will be established within the Department. As a result of the consolidation, ACBPS will be abolished as a statutory agency by 1 July 2015 through repeal of the *Customs Administration Act 1985*.

Policy, regulatory and corporate functions of DIBP and ACBPS will be integrated into DIBP, where the ABF will be responsible for operational and enforcement activities.

To streamline and simplify Australia's external merits review system, the Migration Review Tribunal and Refugee Review Tribunal will be amalgamated with the Administrative Appeals Tribunal and the Social Security Appeals Tribunal. Following the enactment of the Tribunals Amalgamation Bill 2014, the amalgamated tribunal would be established under the *Administrative Appeals Tribunal Act 1975*, would be called the Administrative Appeals Tribunal and will be situated within the Attorney-General's portfolio.

From financial year 2015-16, the Office of the Migration Agents Registration Authority (OMARA) will progressively consolidate into DIBP as part of the Government's deregulation agenda. As a result of the consolidation, OMARA will no longer be attached to DIBP as a discrete office.

### **Department of Immigration and Border Protection**

DIBP's purpose is 'to protect Australia's border and manage the movement of people and goods across it'.

### *Portfolio overview*

DIBP provides policy, regulatory and corporate services as well as delivering intelligence and capability for the organisation. It has immigration responsibilities to manage the entry and stay of temporary and permanent migrants, to promote and confer citizenship and to meet Australia's humanitarian and refugee obligations. It also contributes to strong national security and economy through effective border security control and the facilitation of seamless legitimate movement of people and goods across Australia's borders.

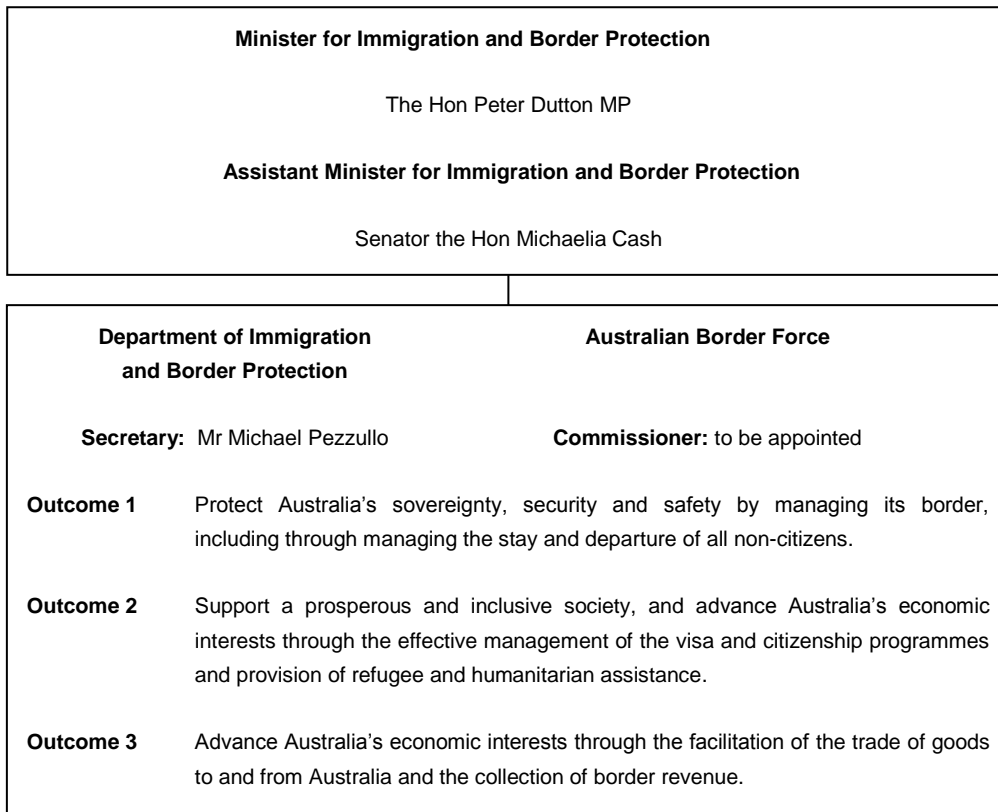
#### **Australian Border Force**

The ABF is a single, integrated, frontline operational border entity that will be formed within DIBP from 1 July 2015. It is the operational arm of DIBP and has statutory responsibilities to enforce the customs and migration laws and the protection of Australia's border.

As the operational enforcement entity within DIBP, the ABF will focus on the operational border, investigations, compliance, detention and enforcement functions offshore and onshore, across Australia's air and seaports, and land and maritime domains. It will also be responsible for the collection of border-related revenue.

The ABF Commissioner, a statutory officer, will have control of the operations of the ABF and is directly accountable to the Minister in relation to those operations. The ABF Commissioner will have a dual role as Comptroller General of Customs with responsibility for enforcement of customs laws and collection of border related revenue.

**Figure 1: Department of Immigration and Border Protection portfolio structure and outcomes**



## PORTFOLIO RESOURCES

Table 1 shows the total new resources provided to the portfolio in the 2015-16 Budget year by entity.

**Table 1: Portfolio resources 2015-16**

	Appropriation			Receipts	Total
	Bill No. 1 \$m	Bill No. 2 \$m	Special \$m	\$m	\$m
<b>Department of Immigration and Border Protection</b>					
Administered appropriations	2,039.3	143.7	420.0	-	2,603.0
Departmental appropriations	2,570.3	226.9	-	154.8	2,952.0
<b>Total:</b>	<b>4,609.6</b>	<b>370.6</b>	<b>420.0</b>	<b>154.8</b>	<b>5,555.0</b>
<b>Portfolio total</b>	<b>4,609.6</b>	<b>370.6</b>	<b>420.0</b>	<b>154.8</b>	<b>5,555.0</b>
Less amounts transferred within portfolio	-	-	-	-	-
<b>Resources available within portfolio:</b>					<b>5,555.0</b>