



Australian Government  
Department of Immigration  
and Border Protection



Australian  
**BORDER FORCE**

# Immigration Detention and Community Statistics Summary

30 November 2017

## Table of Contents

Immigration Detention and Community Statistics Summary.....	1
About this report.....	3
Enquiries .....	3
Acronyms .....	3
Immigration Detention And Community Statistics Summary .....	4
In Community under Residence Determination Population By State/Territory.....	5
Immigration Detention Population.....	6
From 1990 to 30 November 2017.....	6
People In Immigration Detention Facilities.....	7
Arrival Type.....	7
People In Immigration Detention.....	8
Nationality .....	8
Children In Immigration Detention.....	9
Time In Immigration Detention Facilities .....	11
Time In Community Under Residence Determination.....	12

## About this report

This report provides an overview of the number of people in immigration detention and Regional Processing Centres as at midnight on the date of the report. The report is produced on a monthly basis.

Data is sourced from several departmental processing and recording systems. Data relating to the immigration detention population is dynamic and there can be delays in transmission of information from the department's immigration detention network operations. Variations in figures between this report and previous issues can occur. Due to these issues, data from the current financial year should always be considered provisional.

Further information about immigration detention is available at:

<http://www.border.gov.au/about/immigration-detention-in-australia>

## Enquiries

Comments or enquiries concerning this report should be sent using the department's client service feedback form quoting the name and date of the report.

See: <http://www.border.gov.au/about/contact/make-enquiry/enquiries-and-feedback>

## Acronyms

**Table 1 – Acronyms used in this document**

Acronym	Description
APOD	Alternative Place of Detention
IMA	Illegal Maritime Arrival
IDC/F	Immigration Detention Centre/Facility
IRH	Immigration Residential Housing
ITA	Immigration Transit Accommodation
RPC	Regional Processing Centre
S501	Section 501 of the Migration ACT
S501 Visa Cancellation	Visa cancellations based on character or related grounds

# Immigration Detention And Community Statistics Summary

At 30 November 2017, there were 1301 people in immigration detention facilities, including 988 in immigration detention on the mainland and 313 in immigration detention on Christmas Island.

A further 454 people were living in the community after being approved for a residence determination and 19,907 were living in the community after grant of a Bridging Visa E.

The table below reflects figures based on records in Department of Immigration and Border Protection systems.

**Table 2 – People in Immigration Detention Facilities (IDFs), Alternative Places of Detention (APODs), Regional Processing Centres (RPCs) and the Community at 30 November 2017**

Place of immigration detention	Men	Women	Children	Total	Change from Previous Summary 31/10/17
Christmas Island IDC	313	0	0	<b>313</b>	- 1
Maribyrnong IDC	88	9	0	<b>97</b>	- 2
Perth IDC	16	7	0	<b>23</b>	+ 3
Villawood IDC	416	49	0	<b>465</b>	+ 19
Yongah Hill IDC	210	0	0	<b>210</b>	+ 3
Mainland APODs	25	5	<5	<b>32</b>	+ 3
<b>Total IDCs/APODs</b>	<b>1,068</b>	<b>70</b>	<b>&lt;5</b>	<b>1,140</b>	<b>+ 25</b>
Adelaide ITA	17	<5	0	<b>19</b>	- 4
Brisbane ITA	39	13	<5	<b>53</b>	+ 3
Melbourne ITA	78	10	<5	<b>89</b>	+ 13
<b>Total in ITA</b>	<b>134</b>	<b>25</b>	<b>&lt;5</b>	<b>161</b>	<b>+ 12</b>
<b>Total in IDC/F</b>	<b>1,202</b>	<b>95</b>	<b>&lt;5</b>	<b>1,301</b>	<b>+ 37</b>

<b>Total in Community under Residence Determination</b>	<b>140</b>	<b>138</b>	<b>176</b>	<b>454</b>	<b>5</b>
---	------------	------------	------------	------------	----------

<b>Total IMA in Community on Bridging Visa E (Including people in a re grant process)</b>	<b>13,862</b>	<b>2,592</b>	<b>3,453</b>	<b>19,907</b>	<b>448</b>
---	---------------	--------------	--------------	---------------	------------

Republic of Nauru (RPC)	265	38	36	<b>339</b>	- 6
Manus Province, Papua New Guinea (RPC)	0	0	0	<b>0</b>	- 690
<b>Total IMA in RPCs</b>	<b>265</b>	<b>38</b>	<b>36</b>	<b>339</b>	<b>696</b>

Detention Group	Men	Women	Children	Total	Change from Previous Summary 31/10/17
S501 Visa Cancellation	463	19	0	<b>482</b>	+ 20
Illegal Maritime Arrival	315	8	<5	<b>324</b>	0
Other	424	68	<5	<b>495</b>	+ 17
<b>Total</b>	<b>1,202</b>	<b>95</b>	<b>&lt;5</b>	<b>1,301</b>	<b>+ 37</b>

## In Community under Residence Determination Population By State/Territory

Of the 454 people approved for a residence determination to live in the community, 37 per cent were in Victoria, 26.2 per cent in Queensland, 24 per cent in New South Wales, 6.8 per cent in Western Australia and 5.9 per cent in South Australia.

**Table 3 – People in the Community under Residence Determination by State/Territory at 30 November 2017**

State/Territory	Adult Male	Adult Female	Child Male (<18 years)	Child Female (<18 years)	Total
Victoria	54	49	37	28	<b>168</b>
Queensland	35	32	33	19	<b>119</b>
New South Wales	28	41	23	17	<b>109</b>
Western Australia	15	8	5	<5	<b>31</b>
South Australia	8	8	<5	7	<b>27</b>
<b>Total</b>	<b>140</b>	<b>138</b>	<b>102</b>	<b>74</b>	<b>454</b>

# Immigration Detention Population

## From 1990 to 30 November 2017

The overall number of people in immigration detention including in the community under residence determination has decreased by 219 to 1755 compared with 1974 at the end of November 2016. This decrease takes into account releases of detainees into the community under residence determination and detainees granted Bridging E visas (BVEs) as well as decreases through return and removal activities.

**Figure 1 – Population in Immigration Detention**

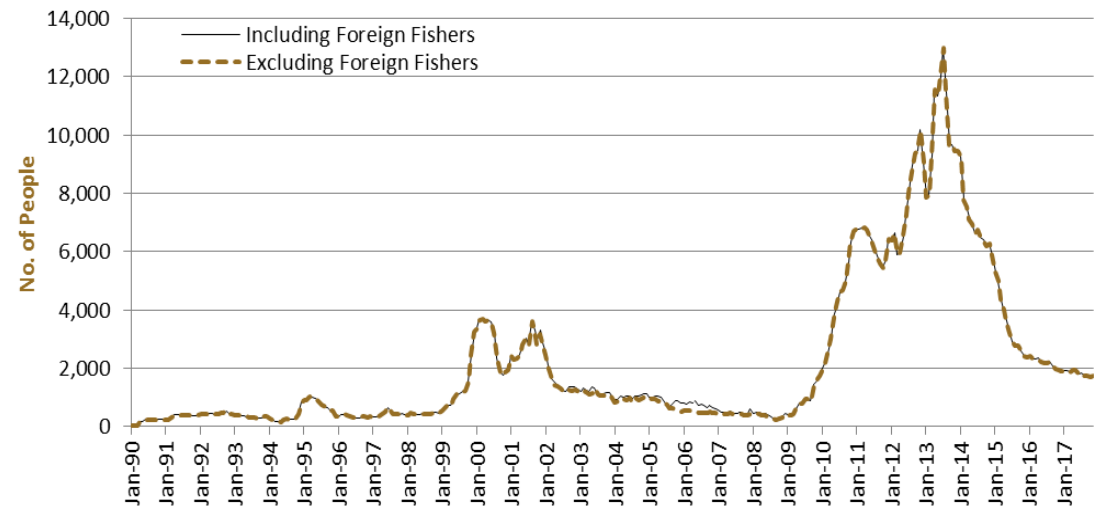


Figure 1 above, shows the number of people in immigration detention from 1990 to the date of this report. The trend had a consistent rise of people in immigration detention from January 2009 to January 2013, but has since had consistent decline.

# People In Immigration Detention Facilities

## Arrival Type

There were 409 people who arrived unlawfully by air or boat, in held immigration detention facilities at 30 November 2017 representing 31.4 per cent of the total immigration detention population.

There were also 892 people (68.6 per cent of the total immigration population) who arrived in Australia lawfully and were subsequently taken into immigration detention and had visa cancellations for either over staying or breaching their visa conditions.

**Figure 2 – People in Held Immigration Detention Facilities by Detention Group**

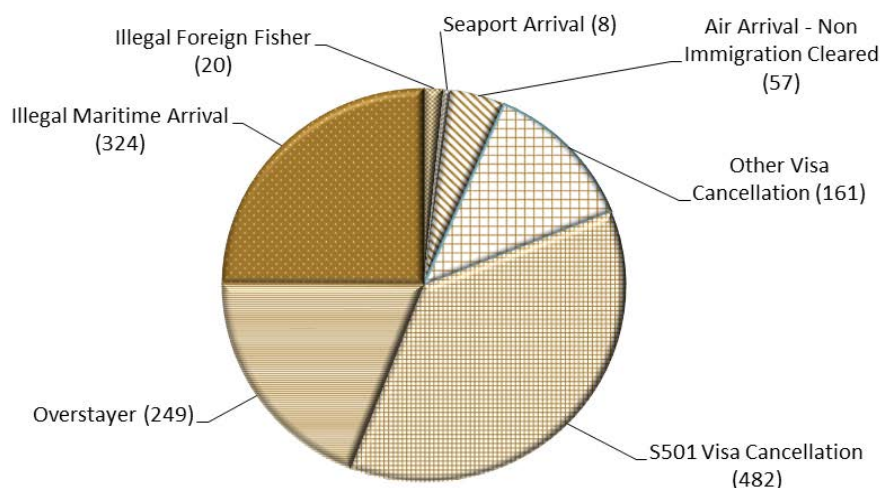


Figure 2 above, shows the number of people in held immigration detention facilities by detention group, including Overstayers, S501 and Other Visa Cancellations, Foreign Fishers, Illegal Maritime Arrivals, Unauthorised Air Arrivals, and if applicable – Inadequately Documented Crew Members and Others such as stowaways and ship deserters.

**Table 4 – People in Held Immigration Detention Facilities by Detention Group at 30 November 2017**

Place of immigration detention	S501 Visa Cancellation	IMA	Other Detention Group	Total	Change from Previous Summary 31/10/17
Christmas Island IDC	174	80	59	<b>313</b>	- 1
Maribyrnong IDC	33	9	55	<b>97</b>	- 2
Perth IDC	10	8	5	<b>23</b>	+ 3
Villawood IDC	182	93	190	<b>465</b>	+ 19
Yongah Hill IDC	67	68	75	<b>210</b>	+ 3
Mainland APODs	0	<5	30	<b>32</b>	+ 3
<b>Total IDCs/APODs</b>	<b>466</b>	<b>260</b>	<b>414</b>	<b>1,140</b>	<b>+ 25</b>
Adelaide ITA	<5	8	9	<b>19</b>	- 4
Brisbane ITA	11	13	29	<b>53</b>	+ 3
Melbourne ITA	<5	43	43	<b>89</b>	+ 13
<b>Total in IRH and ITA</b>	<b>16</b>	<b>64</b>	<b>81</b>	<b>161</b>	<b>+ 12</b>
<b>Total in IDC/F</b>	<b>482</b>	<b>324</b>	<b>495</b>	<b>1,301</b>	<b>+ 37</b>

# People In Immigration Detention

## Nationality

At 30 November 2017, there were 1301 people in held immigration detention facilities. Of these 1301 people, 13.5 per cent were from New Zealand, 7.8 per cent were from Sri Lanka, 7.6 per cent were from Vietnam, 6.8 per cent were from Iran and 5.7 per cent were from China.

**Table 5 – People in Held Immigration Detention Facilities by Nationality at 30 November 2017**

Nationalities	Adult Male	Adult Female	Child Male (<18 years)	Child Female (<18 years)	Total
New Zealand	161	14	0	0	<b>175</b>
Sri Lanka	100	<5	0	0	<b>101</b>
Vietnam	88	10	<5	0	<b>99</b>
Iran	87	<5	0	0	<b>89</b>
China	56	18	0	0	<b>74</b>
Malaysia	42	11	0	0	<b>53</b>
India	44	0	<5	0	<b>45</b>
Pakistan	45	0	0	0	<b>45</b>
United Kingdom	44	<5	0	0	<b>45</b>
Iraq	41	<5	0	0	<b>43</b>
Other	494	36	<5	0	<b>532</b>
<b>Total</b>	<b>1,202</b>	<b>95</b>	<b>&lt;5</b>	<b>0</b>	<b>1,301</b>

At 30 November 2017, 454 were people living in the community after being approved for a residence determination. Of these 454 people, 54.4 per cent were from Iran, 10.8 per cent were from Stateless, 10.4 per cent were Sri Lanka, 3.7 per cent were from Iraq and 3.1 per cent were from Vietnam.

**Table 6 – People in the Community under Residence Determination by Nationality at 30 November 2017**

Nationalities	Adult Male	Adult Female	Child Male (<18 years)	Child Female (<18 years)	Total
Iran	78	84	46	39	<b>247</b>
Stateless	15	12	10	12	<b>49</b>
Sri Lanka	13	12	16	6	<b>47</b>
Iraq	7	<5	<5	<5	<b>17</b>
Vietnam	<5	<5	5	<5	<b>14</b>
Other	24	23	22	11	<b>80</b>
<b>Total</b>	<b>140</b>	<b>138</b>	<b>102</b>	<b>74</b>	<b>454</b>



# Children In Immigration Detention

At 30 November 2017 there were less than five children (aged less than 18 years) in Immigration Residential Housing, Immigration Transit Accommodation and Alternative Places of Detention.

**Figure 3 – Children in Immigration Residential Housing, Immigration Transit Accommodation and Alternative Places of Detention**

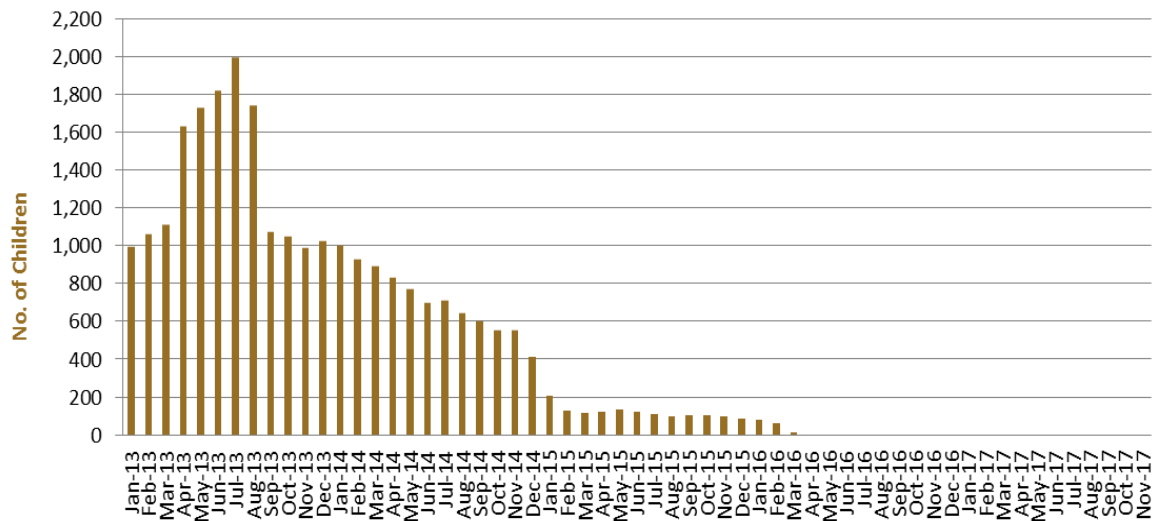


Figure 3 above, shows the number of children in immigration detention facilities and alternative places of detention from January 2013 to the date of this report. The continuous increase in the number of children in detention facilities from April 2013 to Aug 2013 was due to a rapid increase in illegal maritime arrivals during this period. The number of children in immigration detention facilities reduced in September 2013, as children completed mandatory processing and were transferred into the community. The number of children in detention facilities continued to decline during the late 2013 and 2014, with further reduction in January 2015.

At 30 November 2017, the number of children living in the community after being approved for a residence determination decreased by four to 176 from 180 in the previous report.

**Figure 4 – Children in the Community under Residence Determination**

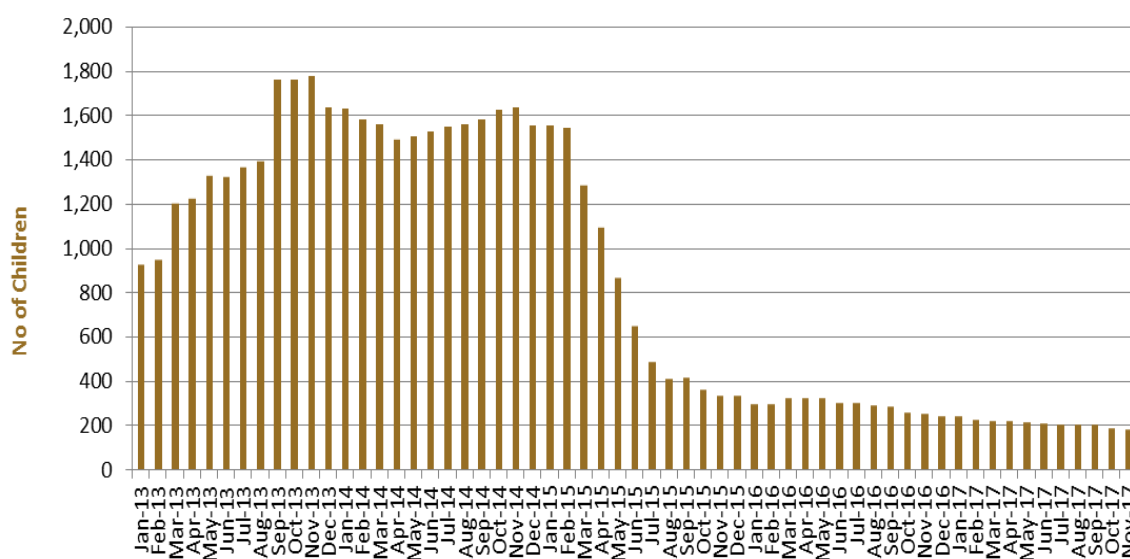


Figure 4 above, shows the number of children in the community under residence determination from January 2012 to the date of this report. The number of children in the community under residence determination, has levelled off at its lowest number since the peak in November 2013, as a result of releases into the community on Bridging E visas.

**Table 7 – Children in Immigration Detention and IMA Children in the Community on a Bridging E Visa at 30 November 2017**

Placement Type	Children
Immigration Residential Housing	0
Immigration Transit Accommodation	<5
Alternative Places of Detention	<5
<b>Total Children in Immigration Detention Facilities</b>	<b>&lt;5</b>
<b>Total Children in the Community under a Residence Determination</b>	<b>176</b>
<b>Total IMA Children in the Community on a Bridging E visa (including in re grant process)</b>	<b>3,453</b>

# Time In Immigration Detention Facilities

At 30 November 2017, there were 1301 people in immigration detention facilities. Of these 1301 people, 37.9 per cent had been detained for 91 days or less and 67.6 per cent had been detained for 365 days or less.

**Table 8 – Length of Time of People in Held Immigration Detention Facilities at 30 November 2017**

Period Detained	Total	% of Total
7 days or less	91	7.0%
8 days - 31 days	214	16.4%
32 days - 91 days	188	14.5%
92 days - 182 days	186	14.3%
183 days - 365 days	201	15.4%
366 days - 547 days	96	7.4%
548 days - 730 days	67	5.1%
Greater than 730 days	258	19.8%
<b>Total</b>	<b>1,301</b>	<b>100%</b>

At 30 November 2017, the average period of time for people held in detention facilities was 417 days.

**Figure 5 – Average Number of Days of People in Held Immigration Detention Facilities only**

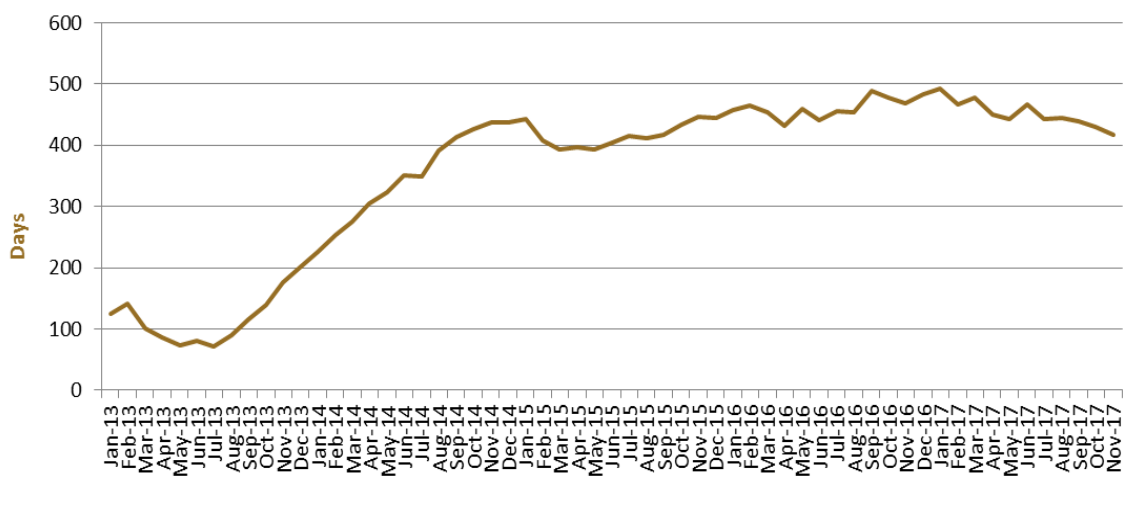


Figure 5 above, shows the average days in held immigration detention at the end of each month from January 2013 to the date of this report. The average period of time for people held in detention facilities steadily increased from July 2013 to January 2015.

## Time In Community Under Residence Determination

Of the 454 people in the community under residence determination, as at 30 November 2017, 4.4 per cent had been in the community for 91 days or less and 18.5 per cent had been in the community for 365 days or less.

**Table 9 – Length of Time of People in Community under Residence Determination at 30 November 2017**

Period Detained	Total	% of Total
7 days or less	6	1.3%
8 days - 31 days	<5	0.9%
32 days - 91 days	10	2.2%
92 days - 182 days	20	4.4%
183 days - 365 days	44	9.7%
366 days - 547 days	26	5.7%
548 days - 730 days	240	52.9%
Greater than 730 days	104	22.9%
<b>Total</b>	<b>454</b>	<b>100%</b>