



Australian Government  
Department of Immigration  
and Border Protection



Australian  
**BORDER FORCE**

# Immigration Detention and Community Statistics Summary

30 November 2016

## Table of Contents

Immigration Detention and Community Statistics Summary.....	1
About this report.....	3
Enquiries .....	3
Acronyms .....	3
Immigration Detention And Community Statistics Summary .....	4
Community Population By State/Territory.....	5
Immigration Detention Population.....	6
From 1990 to 30 November 2016.....	6
People In Immigration Detention Facilities.....	7
Arrival Type.....	7
People In Immigration Detention.....	8
Nationality .....	8
Children In Immigration Detention.....	9
Time In Immigration Detention Facilities .....	11
Time In Community Under Residence Determination.....	12

## About this report

This report provides an overview of the number of people in immigration detention and Regional Processing Centres as at midnight on the date of the report. The report is produced on a monthly basis.

Data is sourced from several departmental processing and recording systems. Data relating to the immigration detention population is dynamic and there can be delays in transmission of information from the department's immigration detention network operations. Variations in figures between this report and previous issues can occur. Due to these issues, data from the current financial year should always be considered provisional.

Further information about immigration detention is available at:

<http://www.border.gov.au/about/immigration-detention-in-australia>

## Enquiries

Comments or enquiries concerning this report should be sent using the department's client service feedback form quoting the name and date of the report.

See: <http://www.border.gov.au/about/contact/make-enquiry/enquiries-and-feedback>

## Acronyms

**Table 1 – Acronyms used in this document**

Acronym	Description
APOD	Alternative Place of Detention
IMA	Illegal Maritime Arrival
IDC/F	Immigration Detention Centre/Facility
IRH	Immigration Residential Housing
ITA	Immigration Transit Accommodation
RPC	Regional Processing Centre
S501	Section 501 of the Migration ACT
S501 Visa Cancellation	Visa cancellations based on character or related grounds

# Immigration Detention And Community Statistics Summary

At 30 November 2016, there were 1414 people in immigration detention facilities, including 1158 in immigration detention on the mainland and 256 in immigration detention on Christmas Island.

A further 560 people were living in the community after being approved for a residence determination and 26,186 were living in the community after grant of a Bridging Visa E.

The table below reflects figures based on records in Department of Immigration and Border Protection systems.

**Table 2 – People in Immigration Detention Facilities (IDFs), Alternative Places of Detention (APODs), Regional Processing Centres (RPCs) and the Community at 30 November 2016**

Place of immigration detention	Men	Women	Children	Total	Change from Previous Summary 31/10/16
Christmas Island IDC	256	0	0	<b>256</b>	+ 3
Maribyrnong IDC	85	<5	0	<b>89</b>	- 9
Perth IDC	18	7	0	<b>25</b>	- 4
Villawood IDC	382	47	0	<b>429</b>	+ 23
Yongah Hill IDC	368	0	0	<b>368</b>	- 8
Mainland APODs	23	0	<5	<b>25</b>	+ 23
<b>Total IDCs/APODs</b>	<b>1,132</b>	<b>58</b>	<b>&lt;5</b>	<b>1,192</b>	<b>+ 28</b>
Perth IRH	<5	<5	0	<b>6</b>	0
Adelaide ITA	14	<5	0	<b>15</b>	- 4
Brisbane ITA	72	13	<5	<b>87</b>	+ 3
Melbourne ITA	93	21	0	<b>114</b>	- 16
<b>Total in IRH and ITA</b>	<b>181</b>	<b>39</b>	<b>&lt;5</b>	<b>222</b>	<b>- 17</b>
<b>Total Facility</b>	<b>1,313</b>	<b>97</b>	<b>&lt;5</b>	<b>1,414</b>	<b>+ 11</b>

<b>Total Community under Residence Determination</b>	<b>166</b>	<b>145</b>	<b>249</b>	<b>560</b>	<b>+ 3</b>
--	------------	------------	------------	------------	------------

<b>Total Community on Bridging Visa E (Including people in a re-grant process)</b>	<b>18,911</b>	<b>3,270</b>	<b>4,005</b>	<b>26,186</b>	<b>- 456</b>
--	---------------	--------------	--------------	---------------	--------------

Republic of Nauru (RPC)	290	49	44	<b>383</b>	- 7
Manus Province, Papua New Guinea (RPC)	871	0	0	<b>871</b>	- 1
<b>Total RPCs</b>	<b>1,161</b>	<b>49</b>	<b>44</b>	<b>1,254</b>	<b>- 8</b>

Detention Group	Men	Women	Children	Total	Change from Previous Summary 31/10/16
S501 Visa Cancellation	434	16	0	<b>450</b>	- 21
Illegal Maritime Arrival	392	30	<5	<b>424</b>	0
Other	487	51	<5	<b>540</b>	+ 32
<b>Total</b>	<b>1,313</b>	<b>97</b>	<b>&lt;5</b>	<b>1,414</b>	<b>+ 11</b>

## Community Population By State/Territory

Of the 560 people approved for a residence determination to live in the community, 35.9 per cent were in Victoria, 27.3 per cent in New South Wales, 21.4 per cent in Queensland, 8 per cent in Western Australia, 7.1 per cent in South Australia and 0.2 per cent in the Australian Capital Territory.

**Table 3 – Community under Residence Determination Population by State/Territory at 30 November 2016**

State/Territory	Adult Male	Adult Female	Child Male (<18 years)	Child Female (<18 years)	Total
Victoria	67	50	50	34	201
New South Wales	37	41	44	31	153
Queensland	33	31	34	22	120
Western Australia	21	12	8	4	45
South Australia	8	11	9	12	40
Australian Capital Territory	0	0	<5	0	<5
<b>Total</b>	<b>166</b>	<b>145</b>	<b>146</b>	<b>103</b>	<b>560</b>

# Immigration Detention Population

## From 1990 to 30 November 2016

The number of people in immigration detention including foreign fishers has increased by 14 to 1974 from 1960 in the previous report.

Figure 1 – Population in Immigration Detention

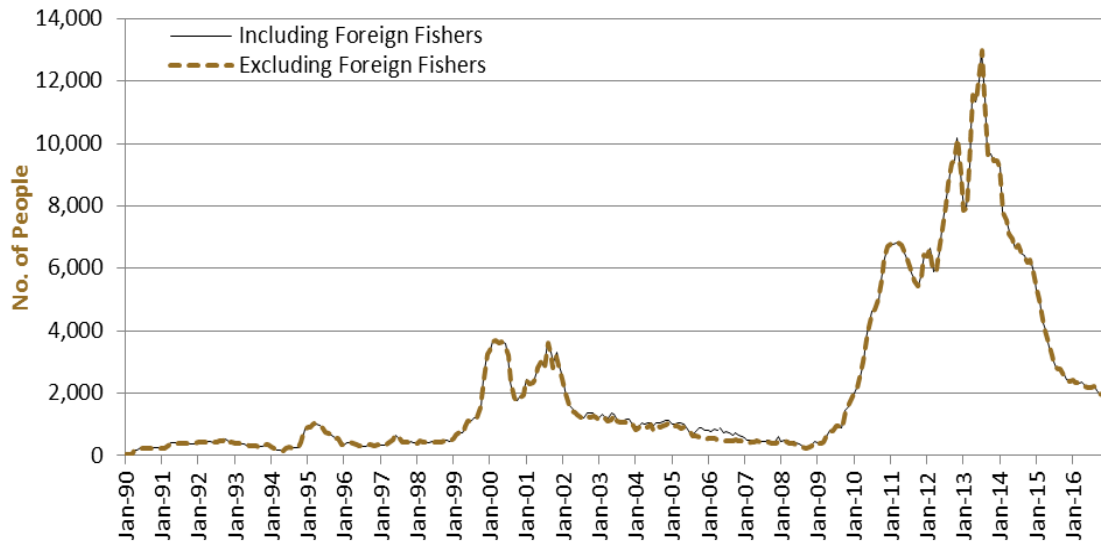


Figure 1 above, shows the number of people in immigration detention from 1990 to the date of this report. The trend had a consistent rise of people in immigration detention from January 2009 to January 2013, but has since had consistent decline.

# People In Immigration Detention Facilities

## Arrival Type

There were 541 people, who arrived unlawfully by air or boat, in held immigration detention facilities at 30 November 2016, representing 38.3 per cent of the total immigration detention population.

There were also 873 people (61.7 per cent of the total immigration population) who arrived in Australia lawfully and were subsequently taken into immigration detention and had visa cancellations for either over staying or breaching their visa conditions.

**Figure 2 – People in Held Immigration Detention Facilities by Detention Group at 30 November 2016**

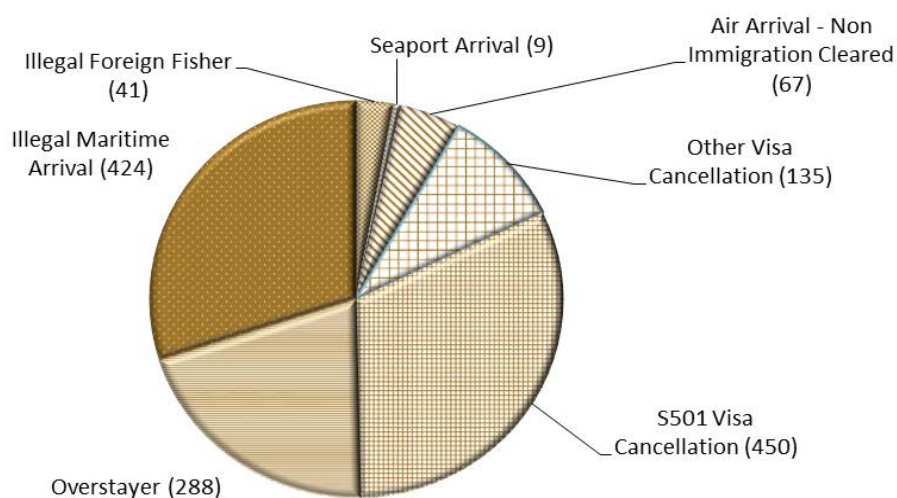


Figure 2 above, shows the number of people in held immigration detention facilities by detention group, including Overstayers, S501 and Other Visa Cancellations, Foreign Fishers, Irregular Maritime Arrivals, Unauthorised Air Arrivals, and if required – Inadequately Documented Crew Members and Others such as stowaways and ship deserters.

**Table 4 – People in Held Immigration Detention Facilities by Detention Group at 30 November 2016**

Place of immigration detention	S501 Visa Cancellation	IMA	Other Detention Group	Total	Change from Previous Summary 31/10/16
Christmas Island IDC	140	63	53	<b>256</b>	+ 3
Maribyrnong IDC	32	22	35	<b>89</b>	- 9
Perth IDC	11	<5	10	<b>25</b>	- 4
Villawood IDC	148	85	196	<b>429</b>	+ 23
Yongah Hill IDC	84	150	134	<b>368</b>	- 8
Mainland APODs	0	0	25	<b>25</b>	+ 23
<b>Total IDCs/APODs</b>	<b>415</b>	<b>324</b>	<b>453</b>	<b>1,192</b>	<b>+ 28</b>
Perth IRH	<5	<5	<5	<b>6</b>	0
Adelaide ITA	<5	5	9	<b>15</b>	- 4
Brisbane ITA	33	34	20	<b>87</b>	+ 3
Melbourne ITA	0	58	56	<b>114</b>	- 16
<b>Total in IRH and ITA</b>	<b>35</b>	<b>100</b>	<b>87</b>	<b>222</b>	<b>- 17</b>
<b>Total Facility</b>	<b>450</b>	<b>424</b>	<b>540</b>	<b>1,414</b>	<b>+ 11</b>

# People In Immigration Detention

## Nationality

At 30 November 2016, there were 1414 people in held immigration detention facilities. Of these 1414 people, 13.0 per cent were from New Zealand, 9.7 per cent were from Iran, 9.1 per cent were from Vietnam, 5.8 per cent were from Sri Lanka and 4.5 per cent were from China.

**Table 5 – People in Held Immigration Detention Facilities at 30 November 2016**

Nationalities	Adult Male	Adult Female	Child Male (<18 years)	Child Female (<18 years)	Total
New Zealand	177	7	0	0	184
Iran	117	18	<5	0	137
Vietnam	116	12	0	0	128
Sri Lanka	82	0	0	0	82
China	55	9	0	0	64
India	54	<5	0	0	55
Iraq	51	<5	0	0	53
Malaysia	44	9	0	0	53
Afghanistan	47	0	0	0	47
Other	570	39	<5	0	611
<b>Total</b>	<b>1,313</b>	<b>97</b>	<b>&lt;5</b>	<b>0</b>	<b>1,414</b>

At 30 November 2016, 560 were people living in the community after being approved for a residence determination. Of these 560 people, 44.1 per cent were from Iran, 15.5 per cent were from Sri Lanka, 10.0 per cent were Stateless and 6.6 per cent were from Iraq.

**Table 6 – People in the Community under Residence Determination at 30 November 2016**

Nationalities	Adult Male	Adult Female	Child Male (<18 years)	Child Female (<18 years)	Total
Iran	83	73	50	41	247
Sri Lanka	23	19	29	16	87
Stateless	14	13	13	16	56
Iraq	11	7	10	9	37
Vietnam	12	9	9	6	36
Other	23	24	35	15	97
<b>Total</b>	<b>166</b>	<b>145</b>	<b>146</b>	<b>103</b>	<b>560</b>



# Children In Immigration Detention

At 30 November 2016, there were less than five children (aged less than 18 years) in Immigration Residential Housing, Immigration Transit Accommodation and Alternative Places of Detention.

**Figure 3 – Children in Immigration Residential Housing, Immigration Transit Accommodation and Alternative Places of Detention**

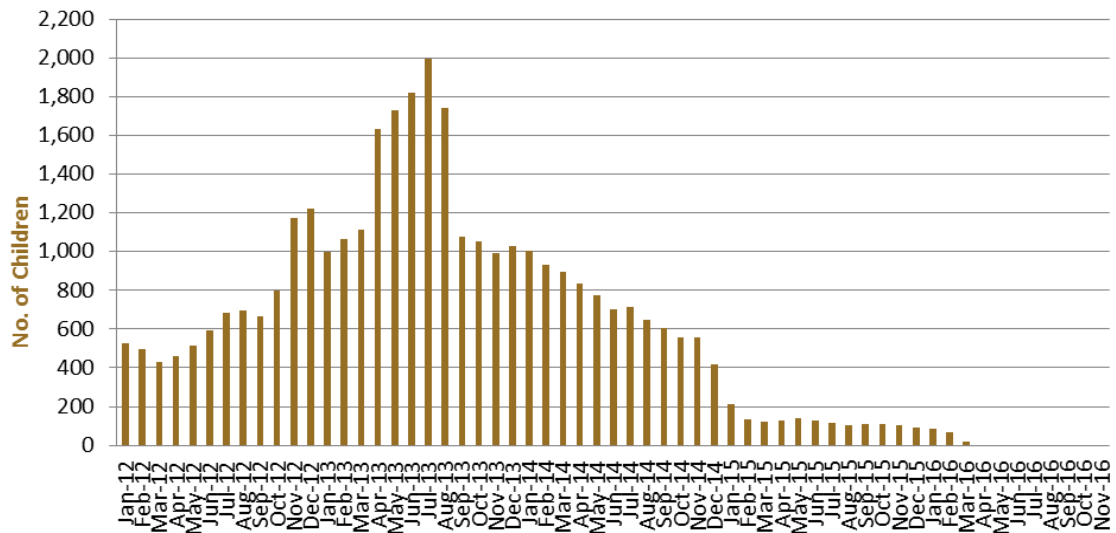


Figure 3 above, shows the number of children in immigration detention facilities and alternative places of detention from January 2012 to the date of this report. The continuous increase in the number of children in detention facilities from April 2013 to August 2013 was due to a rapid increase in irregular maritime arrivals during this period. The number of children in immigration detention facilities reduced in September 2013, as children completed mandatory processing and were transferred into the community. The number of children in detention facilities continued to decline during the late 2013 and 2014, with further reduction in January 2015.

At 30 November 2016, the number of children living in the community after being approved for a residence determination decreased to 249 from 251 in the previous report.

**Figure 4 – Children in the Community under Residence Determination**

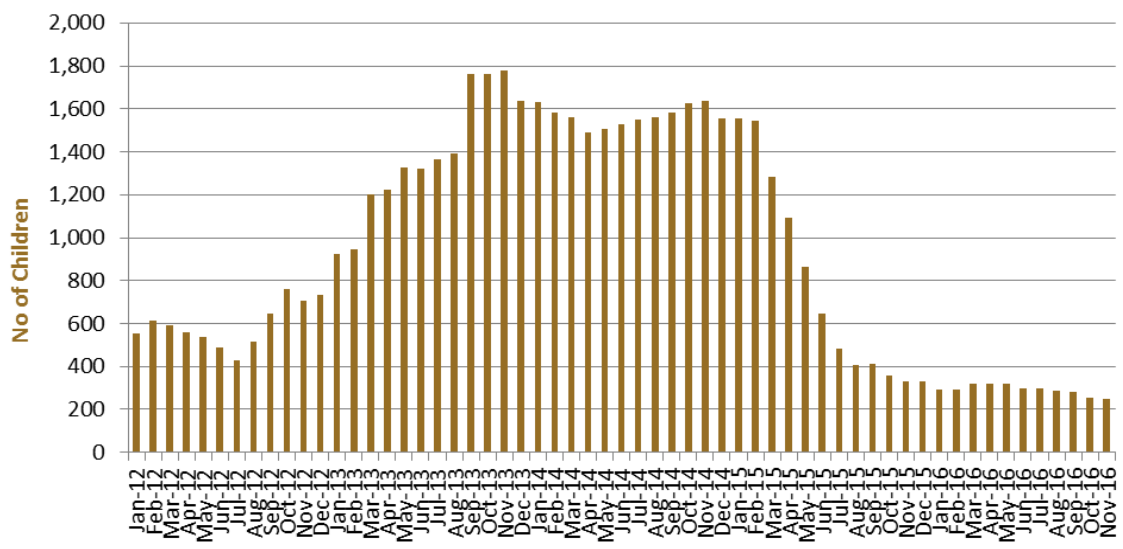


Figure 4 above, shows the number of children in the community under residence determination from January 2012 to the date of this report. The number of children in the community under residence determination, has levelled off at its lowest number since the peak in November 2013, as a result of releases into the community on Bridging E visas.

**Table 7 – Children in Immigration Detention and in the Community at 30 November 2016 <sup>1</sup>**

Placement Type	Children
Immigration Residential Housing	0
Immigration Transit Accommodation	<5
Alternative Places of Detention	<5
<b>Total Facility</b>	<b>&lt;5</b>
<b>Total in the Community under a Residence Determination</b>	<b>249</b>
<b>Total in the Community on a Bridging E visa (including in re-grant process)</b>	<b>4,005</b>

(1) <sup>1</sup> At 30 November 2016, there were less than five children in held immigration detention facilities. The table above reflects figures based on records in Department of Immigration and Border Protection systems.

# Time In Immigration Detention Facilities

At 30 November 2016, there were 1414 people in immigration detention facilities. Of these 1414 people, 28.9 per cent had been detained for 91 days or less and 57.1 per cent had been detained for 365 days or less.

**Table 8 – Length of time in Held Immigration Detention Facilities at 30 November 2016**

Period Detained	Total	% of Total
7 days or less	77	5.4%
8 days - 31 days	167	11.8%
32 days - 91 days	165	11.7%
92 days - 182 days	186	13.2%
183 days - 365 days	213	15.1%
366 days - 547 days	148	10.5%
548 days - 730 days	125	8.8%
Greater than 730 days	333	23.6%
<b>Total</b>	<b>1,414</b>	<b>100%</b>

At 30 November 2016, the average period of time for people held in detention facilities was 469 days.

**Figure 5 – Average number of days in Held Immigration Detention Facilities only**

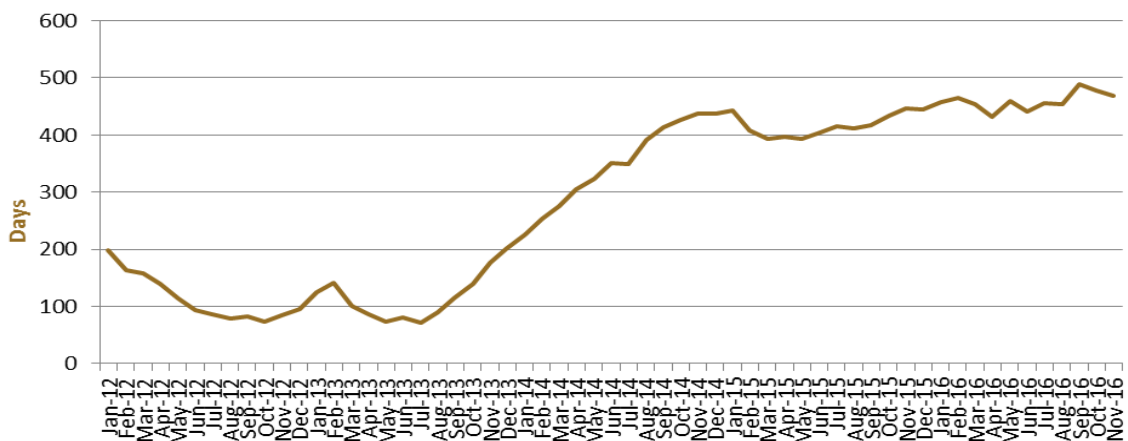


Figure 5 above, shows the average days in held immigration detention only by month from January 2012 to the date of this report. The average period of time for people held in detention facilities steadily increased from July 2013 to January 2015. Between January 2015 and March 2015, the average period of time for people in held detention facilities decreased.

## Time In Community Under Residence Determination

Of the 560 people in the community under residence determination, as at 30 November 2016, 3.9 per cent had been in the community for 91 days or less and 51.6 per cent had been in the community for 365 days or less.

**Table 9 – Length of time in Community under Residence Determination at 30 November 2016**

<b>Period Detained</b>	<b>Total</b>	<b>% of Total</b>
7 days or less	7	1.3%
8 days - 31 days	0	0.0%
32 days - 91 days	15	2.7%
92 days - 182 days	11	2.0%
183 days - 365 days	256	45.7%
366 days - 547 days	48	8.6%
548 days - 730 days	36	6.4%
Greater than 730 days	187	33.4%
<b>Total</b>	<b>560</b>	<b>100%</b>