



Australian Government
Department of Immigration
and Border Protection



Australian
BORDER FORCE

Immigration Detention and Community Statistics Summary

30 September 2015

Table of Contents

Immigration Detention and Community Statistics Summary.....	1
About this report.....	3
Enquiries	3
Acronyms	3
Immigration Detention And Community Statistics Summary	4
Community Population By State/Territory	5
Immigration Detention Population	6
From 1990 to 30 September 2015.....	6
People In Immigration Detention Facilities.....	7
Arrival Type.....	7
People in Immigration Detention	8
Nationality	8
Children In Immigration Detention.....	9
Time In Immigration Detention Facilities	11
Time In Community Detention.....	12

About this report

This report provides an overview of the number of people in immigration detention and Regional Processing Centres as at midnight on the date of the report. The report is produced on a monthly basis.

Data is sourced from several departmental processing and recording systems. Data relating to the immigration detention population is dynamic and there can be delays in transmission of information from the department's immigration detention network operations. Variations in figures between this report and previous issues can occur. Due to these issues, data from the current financial year should always be considered provisional.

Further information about immigration detention is available at:

<http://www.border.gov.au/Busi/Comp/Immigration-detention>

Enquiries

Comments or enquiries concerning this report should be sent using the department's client service feedback form quoting the name and date of the report.

See: <http://www.border.gov.au/about/contact/make-enquiry/enquiries-and-feedback>

Acronyms

Table 1 – Acronyms used in this document

Acronym	Description
APOD	Alternative Place of Detention
IDC/F	Immigration Detention Centre/Facility
IRH	Immigration Residential Housing
ITA	Immigration Transit Accommodation
RPC	Regional Processing Centre

Immigration Detention And Community Statistics Summary

As at 30 September 2015, there were 2,044 people in immigration detention facilities, including 1,759 in immigration detention on the mainland and 285 in immigration detention on Christmas Island.

A further 744 people were living in the community after being approved for a residence determination and 28,937 were living in the community after grant of a Bridging Visa E.

Table 2 – People in Immigration Detention Facilities (IDFs), Alternative Places of Detention (APODs), Regional Processing Centres (RPCs) and the Community

Place of immigration detention	Men	Women	Children	Total	Change from Previous Summary 31/08/15
Christmas Island IDC	285	0	0	285	+ 64
Maribyrnong IDC	102	11	0	113	+ 13
Perth IDC	28	15	0	43	+ 2
Villawood IDC	346	49	0	395	+ 6
Yongah Hill IDC	345	0	0	345	- 40
Christmas Island APODs	0	0	0	0	0
Mainland APODs	455	98	77	630	- 12
Total IDCs/APODs	1,561	173	77	1,811	+ 33
Perth IRH	2	2	2	6	- 1
Sydney IRH	7	8	11	26	+ 6
Adelaide ITA	17	1	0	18	0
Brisbane ITA	38	14	4	56	- 7
Melbourne ITA	75	33	19	127	- 15
Total in IRH and ITA	139	58	36	233	- 17
Total Facility	1,700	231	113	2,044	+ 16
Total Community under Residence Determination	191	144	409	744	+ 9
Total Community on Bridging Visa E (Including people in a re-grant process)	21,720	3,356	3,861	28,937	- 75
Republic of Nauru (RPC)	425	114	92	631	- 22
Manus Province, Papua New Guinea (RPC)	934	0	0	934	- 2
Total RPCs	1,359	114	92	1,565	- 24

Community Population By State/Territory

Of the 744 people approved for a residence determination to live in the community, 37.0 per cent were in Victoria, 21.4 per cent in Queensland, 20.6 per cent in New South Wales, 10.3 per cent in Western Australia, 8.3 per cent in South Australia, 1.5 per cent in the Australian Capital Territory and 0.9 per cent in Tasmania.

Table 3 – Community Detention Population by State/Territory as at 31 August 2015

State/Territory	Adult Male	Adult Female	Child Male (<18 years)	Child Female (<18 years)	Total
Victoria	76	49	103	47	275
Queensland	43	33	50	33	159
New South Wales	31	30	56	36	153
Western Australia	21	18	28	10	77
South Australia	13	12	17	20	62
Australian Capital Territory	4	1	4	2	11
Tasmania	3	1	3	0	7
Total	191	144	261	148	744

Immigration Detention Population

From 1990 to 30 September 2015

The number of people in immigration detention continues to reduce as a result of releases into the community.

Figure 1 – Population in Immigration Detention

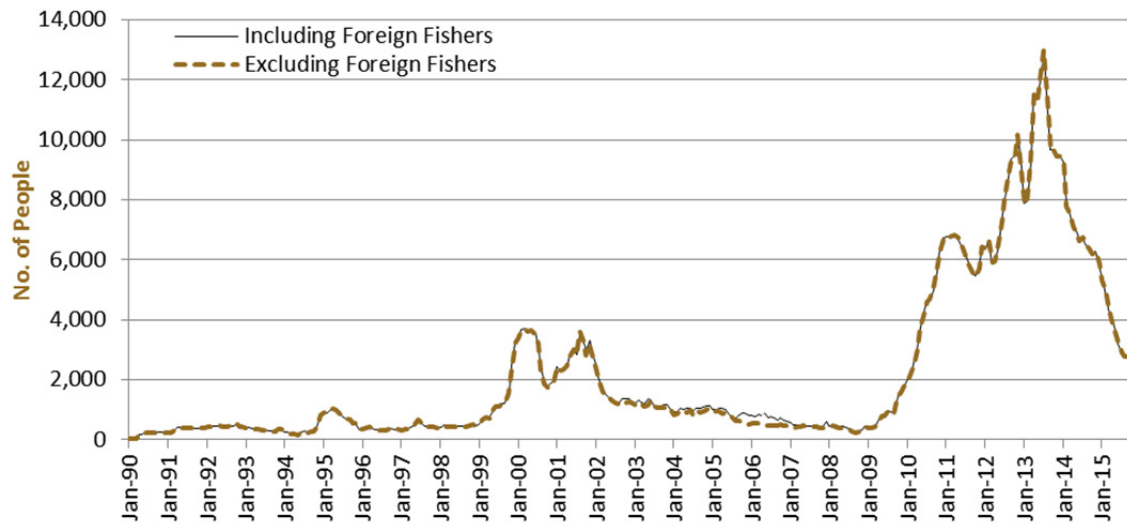


Figure 1 above, shows the number of people in immigration detention from 1990 to the date of this report. The trend had a consistent rise of people in immigration detention from January 2009 to January 2013, but has since decreased and continues to decline steadily.

People In Immigration Detention Facilities

Arrival Type

The number of people in held immigration detention facilities, who arrived unlawfully by air or boat as at 30 September 2015 was 1,044, representing approximately 51.0 per cent of the total immigration detention population.

There were also 1,000 people (about 49.0 per cent of the total immigration population) who arrived in Australia lawfully and were subsequently taken into immigration detention and had visa cancellations for either over staying or breaching their visa conditions.

Figure 2 – People in Held Immigration Detention Facilities by Arrival Type

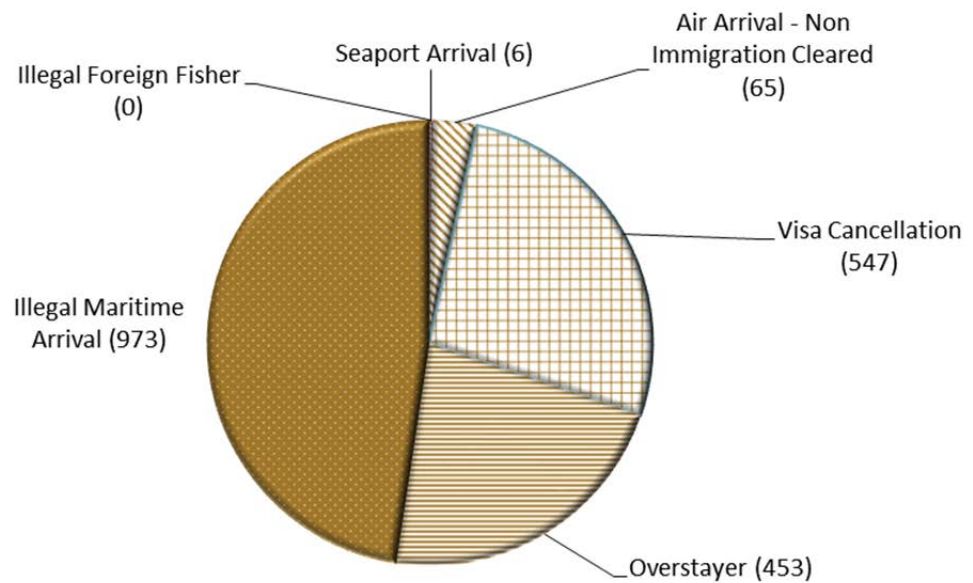


Figure 2 above, shows the number of people in held immigration detention facilities by arrival type, including Visa Overstayers, Visa Cancellations, Foreign Fishers, Irregular Maritime Arrivals, Unauthorised Air Arrivals, and if required – Inadequately Documented Crew Members and Others such as stowaways and ship deserters.

People in Immigration Detention

Nationality

As at 30 September 2015, there were 2,044 people in held immigration detention facilities. Of these 2,044 people, around 19.6 per cent were from Iran, 9.5 per cent were from New Zealand, 8.1 per cent were from Sri Lanka, 7.5 per cent were from China and 6.2 per cent were from Vietnam.

Table 4 – People in Held Immigration Detention Facilities as at 30 September 2015

Nationalities	Adult Male	Adult Female	Child Male (<18 years)	Child Female (<18 years)	Total
Iran	282	64	31	23	400
New Zealand	174	21	0	0	195
Sri Lanka	146	9	7	3	165
China	116	32	3	3	154
Vietnam	112	12	2	1	127
Malaysia	60	17	2	2	81
Stateless	63	7	6	5	81
Afghanistan	75	2	1	0	78
Iraq	58	5	1	2	66
Other	614	62	13	8	697
Total	1,700	231	66	47	2,044

As at 30 September 2015, 744 were people living in the community after being approved for a residence determination. Of these 744 people, around 28.0 per cent were from Iran, 17.5 per cent were from Sri Lanka, 13.7 per cent were Stateless and 11.7 per cent were from Afghanistan.

Table 5 – People in the community under Residence Determination as at 30 September 2015

Nationalities	Adult Male	Adult Female	Child Male (<18 years)	Child Female (<18 years)	Total
Iran	58	59	51	40	208
Sri Lanka	37	22	44	27	130
Stateless	28	18	34	22	102
Afghanistan	16	2	67	2	87
Vietnam	24	15	24	21	84
Other	28	28	41	36	133
Total	191	144	261	148	744

Children In Immigration Detention

As at 30 September 2015, there were 113 children (aged under 18 years) in Immigration Residential Housing, Immigration Transit Accommodation and Alternative Places of Detention.

Figure 3 – Children in Immigration Residential Housing, Immigration Transit Accommodation and Alternative Places of Detention

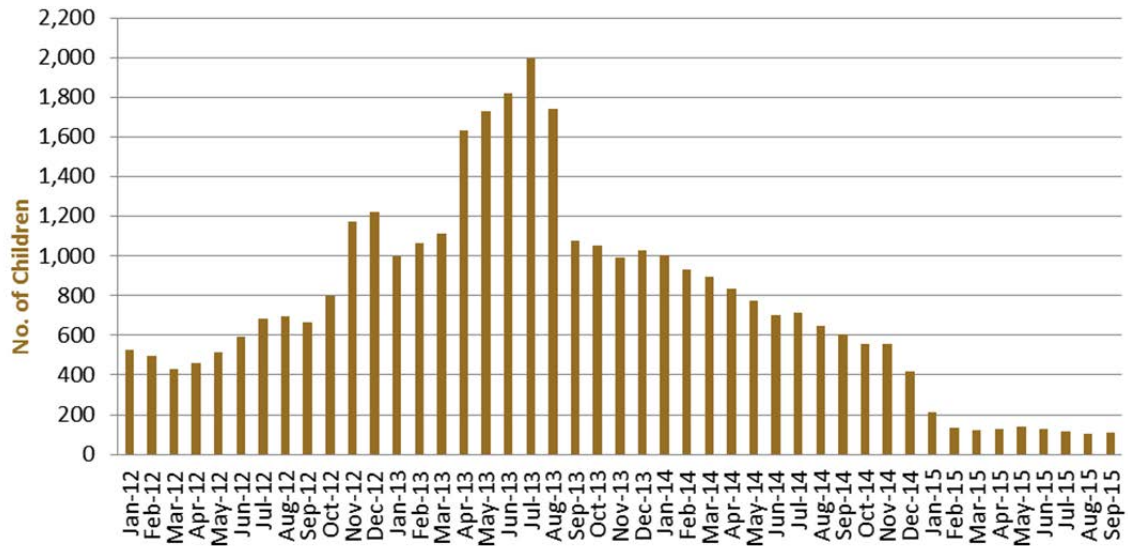


Figure 3 above, shows the number of children in immigration detention facilities and alternative places of detention from January 2012 to the date of this report. The increase in the number of children in detention facilities in April and June 2013 was due to a rapid increase in irregular maritime arrivals during this period. The number of children in immigration detention facilities reduced in September 2013, as children completed mandatory processing and were transferred into the community. The numbers of children in detention facilities continued to trend down during late 2013 and 2014, with a further reduction in January 2015.

The number of children living in the community after being approved for a residence determination increased in September 2015 to 409 children.

Figure 4 – Children in the community under Residence Determination

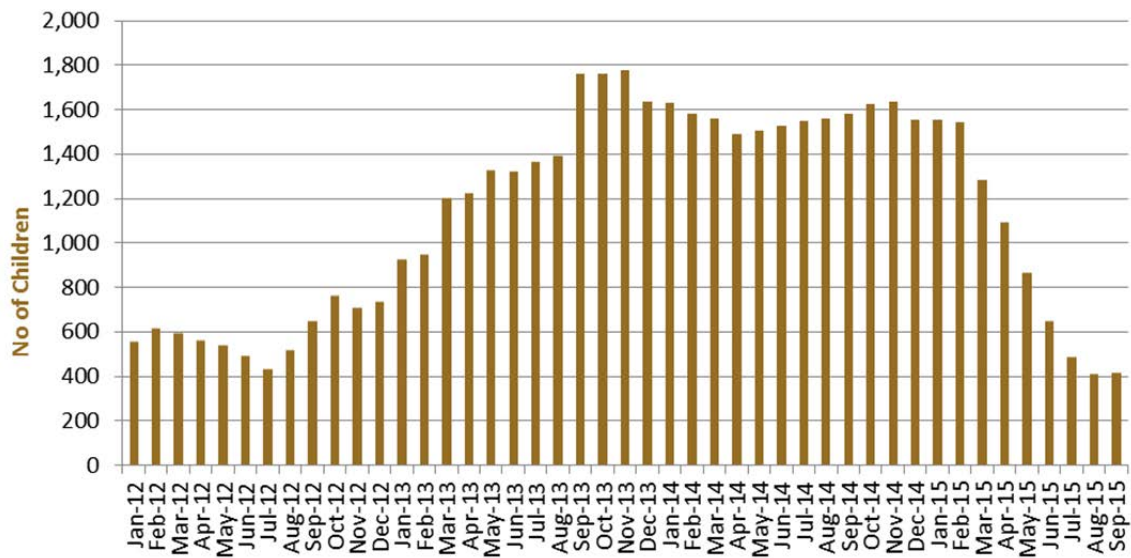


Figure 4 above, shows the number of children in community detention under residence determination from January 2012 to the date of this report. The number of children in community detention under residence determination has continued to decrease since February 2015 as a result of releases into the community on Bridging E visas.

Table 6 – Children in Immigration Detention and in the Community as at 30 September 2015

Placement Type	Children
Immigration Residential Housing	13
Immigration Transit Accommodation	23
Alternative Places of Detention	77
Total Facility	113
Total in the Community under a Residence Determination	409
Total in the Community on a Bridging Visa E (including in re-grant process)	3,861

Time In Immigration Detention Facilities

As at 30 September 2015, there were 2,044 people in immigration detention facilities. Of these 2,044 people, around 26.8 per cent had been detained for 91 days or less and 57.4 per cent had been detained for 365 days or less.

Table 7 – Length of time in held immigration detention facilities as at 30 September 2015

Period Detained	Total	% of Total
7 days or less	89	4.4%
8 days - 31 days	214	10.5%
32 days - 91 days	245	12.0%
92 days - 182 days	249	12.2%
183 days - 365 days	376	18.4%
366 days - 547 days	225	11.0%
548 days - 730 days	180	8.8%
Greater than 730 days	466	22.8%
Total	2,044	100.0%

The average period of time for people held in detention facilities has remained similar to last month, at 417 days as at 30 September 2015.

Figure 5 – Average number of days in held immigration detention facilities only

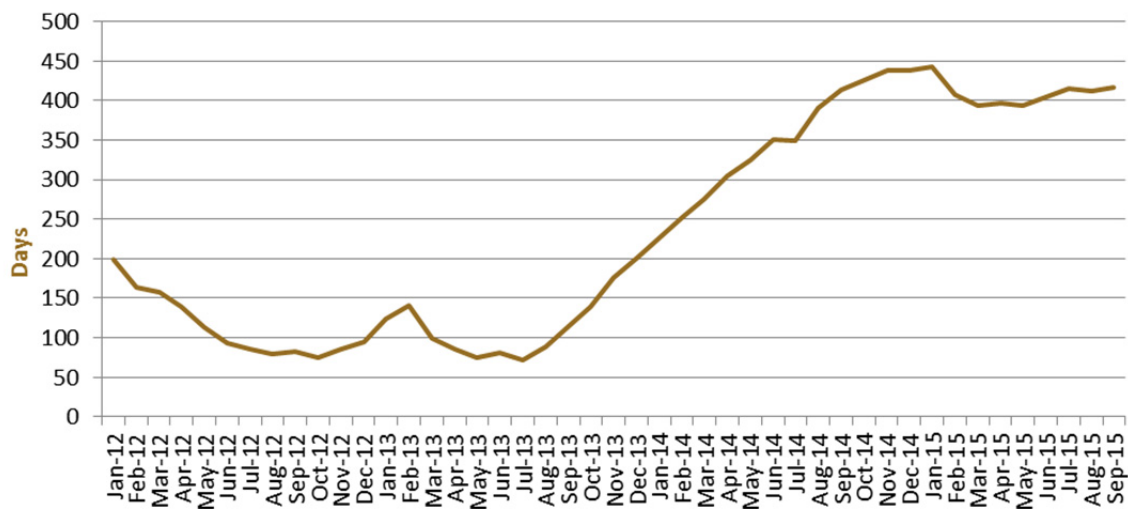


Figure 5 above, shows the average days in held immigration detention only by month from January 2012 to the date of this report. The average period of time for people held in detention facilities steadily increased from July 2013 to January 2015. Between January 2015 and March 2015, the average period of time for people in held detention facilities decreased then steadied as at the date of this report.

Time In Community Detention

Of the 743 people in Community Detention, as at 30 September 2015, 4.2 per cent had been in Community Detention for 91 days or less and 21.8 per cent had been in Community Detention for 365 days or less.

Table 8 – People in Community Detention by Length of Time in Community Detention

Period Detained	Total	% of Total
7 days or less	0	0.0%
8 days - 31 days	8	1.1%
32 days - 91 days	24	3.1%
92 days - 182 days	34	4.6%
183 days - 365 days	97	13.1%
366 days - 547 days	101	13.6%
548 days - 730 days	44	5.9%
Greater than 730 days	436	58.7%
Total	744	100.0%