



Australian Government
Department of Home Affairs



Australian
BORDER FORCE

Immigration Detention and Community Statistics Summary

30 September 2021

Table of Contents

About this report.....	3
Enquiries.....	3
Acronyms.....	3
Important Notice on APODs.....	3
Immigration Detention And Community Statistics Summary.....	3
In Community under Residence Determination Population By State/Territory.....	5
Immigration Detention Population.....	6
From 1990 to Current.....	6
People In Immigration Detention Facilities.....	7
Arrival Type.....	7
People In Immigration Detention.....	8
Nationality.....	9
Children In Immigration Detention.....	9
Time In Immigration Detention Facilities.....	12
Time In Community Under Residence Determination.....	13

About this report

This report provides an overview of the number of people in onshore immigration detention as at midnight on the date of the report. The report is produced on a monthly basis.

As data is sourced from several departmental processing and recording systems, data relating to the immigration detention population is dynamic and variations between monthly reports can occur. Due to these issues, data from the current financial year should always be considered provisional.

Further information about immigration detention is available at:

<https://www.homeaffairs.gov.au/research-and-statistics/statistics/visa-statistics/live/immigration-detention>

Enquiries

Comments or enquiries concerning this report should be sent using the Department's client service feedback form quoting the name and date of the report.

See: <https://immi.homeaffairs.gov.au/help-support/contact-us>

Acronyms

Table 1 – Acronyms used in this document

Acronym	Description
APOD	Alternative Place of Detention
IMA	Illegal Maritime Arrival
IDC/F	Immigration Detention Centre/Facility
IRH	Immigration Residential Housing
ITA	Immigration Transit Accommodation
S501	Section 501 of the <i>Migration Act 1958</i> (the Migration Act)
S501 Visa Cancellation	Visa cancellations based on character or related grounds

Important Notice on APODs

From July 2020, detainees residing in APODs are reported under 'APODs' rather than under the ITA or IDC that had responsibility for their management and care. APODs include hospitals, aged-care facilities, mental health inpatient facilities, as well as hotel and apartment style accommodation. The number of individuals in APODs is provided by the State and Territory of the APODs.

Immigration Detention And Community Statistics Summary

At 30 September 2021, there were 1459 people in immigration detention facilities.

Of the 1459 people in immigration detention facilities, 1261 (86.4%) have a criminal history.

A further 562 people were living in the community after being approved for residence determination and 11,542 IMAs were living in the community after grant of a Bridging Visa E.

The table below reflects figures based on records in Department of Home Affairs systems.

Table 2 – People in Immigration Detention Centres (IDCs), Alternative Places of Detention (APODs), Immigration Transit Accommodation (ITA) and the Community at 30 September 2021

Place of immigration detention by State*	Men	Women	Children	Total	Change from 31/08/21
NSW					
Villawood IDC	424	26	0	450	+ 25
APODs	23	5	0	28	- 10
VIC					
Melbourne ITA	234	9	0	243	+ 14
APODs	48	0	0	48	+ 2
QLD					
Brisbane ITA	99	0	0	99	+ 7
APODs	<20	<5	0	19	- 5
SA					
Adelaide ITA	23	0	0	23	0
APODs	0	<5	0	<5	0
WA					
Yongah Hill IDC	294	0	0	294	- 24
Perth IDC	13	8	0	21	+ 1
APODs	<10	0	0	<10	+ 2
North West Point IDC	226	0	0	226	+ 7
Christmas Island APODs	0	0	0	0	0
NT					
APODs	0	0	0	0	0
Total IDCs	957	34	0	991	+ 9
Total APODs	95	8	0	103	- 11
Total ITAs	356	9	0	365	+ 21
Total IDCs/APODs/ITAs	1,408	51	0	1,459	+ 19
Total in Community under Residence Determination	224	162	176	562	+ 2
Total IMAs in Community on Bridging Visa E (Including people in a re-grant process)	8,549	1,357	1,636	11,542	- 88

* Refer to Important Notice on APODs on page 3.

In Community under Residence Determination Population By State/Territory

Of the 562 people approved for a residence determination to live in the community, 49.6 per cent were in Victoria, 31.0 per cent in Queensland, 15.1 per cent in New South Wales, 2.5 per cent in South Australia, 1.8 per cent in Western Australia.

Table 3 – People in the Community under Residence Determination by State/Territory at 30 September 2021

State/Territory	Men	Women	Children	Total
New South Wales	33	32	20	85
Victoria	115	79	85	279
Queensland	64	44	66	174
South Australia	<10	<5	<5	14
Western Australia	<5	<5	<5	10
Total	224	162	176	562

Immigration Detention Population

From January 1990 to Current

The overall number of people in immigration detention including in the community under residence determination has decreased by 56 to 2021 compared with 2077 at the end of September 2020. This number takes into account detainees in the community under residence determination and detainees who were held in immigration detention facilities as at 30 September 2021.

Figure 1 – Population in Immigration Detention

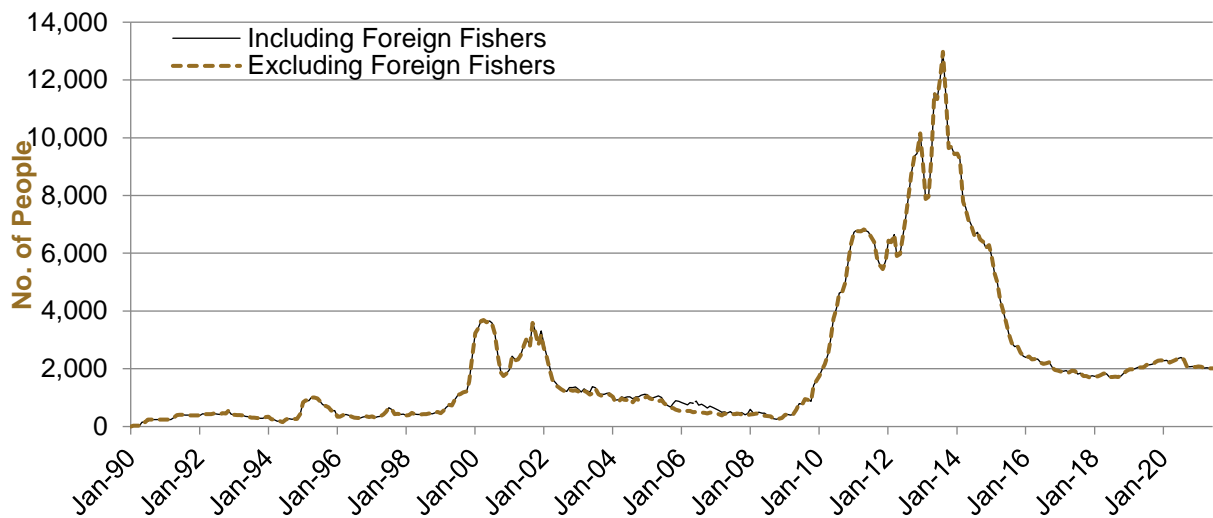


Figure 1 above, shows the number of people in immigration detention from 1990 to 2021.

People In Immigration Detention Facilities

Arrival Type

There were 291 people who arrived unlawfully by air or boat, in held immigration detention facilities at 30 September 2021 representing 19.9 per cent of the total immigration detention population.

There were also 1168 people (80.1 per cent of the total immigration population) who arrived in Australia lawfully and were subsequently taken into immigration detention for either overstaying or having their visas cancelled for breaching visa conditions.

Figure 2 – People in Held Immigration Detention Facilities by Detention Group

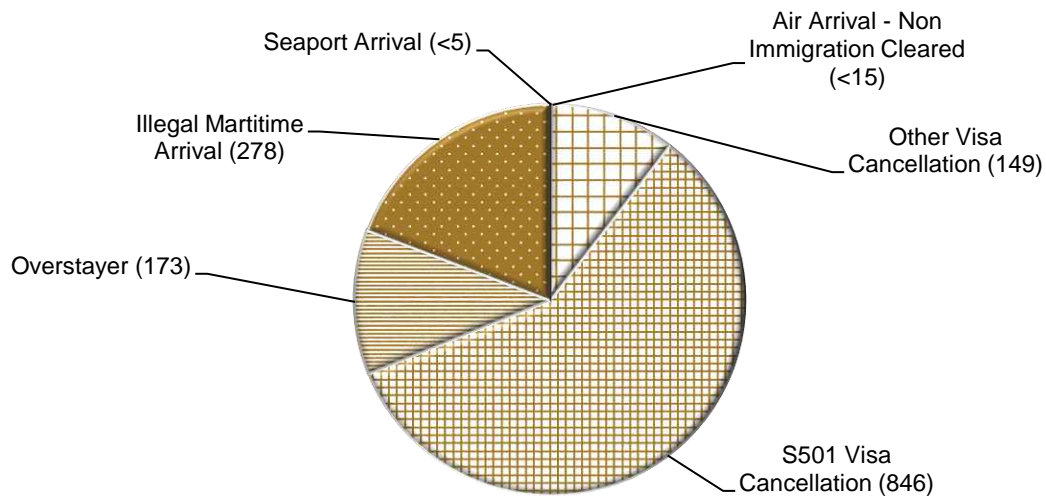


Figure 2 above, shows the number of people in held immigration detention facilities by detention group, including Overstayers, S501 and Other Visa Cancellations, Illegal Maritime Arrivals, Unauthorised Air Arrivals, and if applicable – Illegal Foreign Fishers and Others such as stowaways and ship deserters.

Table 4 – People in Held Immigration Detention Facilities by Detention Group at 30 September 2021

Place of immigration detention by State*	S501 Visa Cancellation	IMA	Other Detention Group	Total	Change from 31/08/21
NSW					
Villawood IDC	285	53	112	450	+ 25
APODs	16	0	12	28	- 10
VIC					
Melbourne ITA	118	48	77	243	+ 14
APODs	<5	46	<5	48	+ 2
QLD					
Brisbane ITA	66	<25	<15	99	+ 7
APODs	<20	<5	<5	19	- 5
SA					
Adelaide ITA	14	<10	<5	23	0
APODs	0	0	<5	<5	0
WA					
Yongah Hill IDC	144	83	67	294	- 24
Perth IDC	11	5	5	21	+ 1
APODs	<5	0	<5	<10	+ 2
North West Point IDC	170	13	43	226	+ 7
Christmas Island APODs	0	0	0	0	0
NT					
APODs	0	0	0	0	0
Total IDCs	610	154	227	991	+ 9
Total APODs	38	47	18	103	- 11
Total ITAs	198	77	90	365	+ 21
Total IDCs/APODs/ITAs	846	278	335	1,459	+ 19

* Refer to Important Notice on APODs on page 3.

Table 5 – People in Held Immigration Detention Facilities by Detention Group and Cohort at 30 September 2021

Detention Group	Men	Women	Children	Total	Change from 31/08/21
S501 Visa Cancellation	815	31	0	846	+ 35
Illegal Maritime Arrival	273	5	0	278	- 13
Other	320	15	0	335	- 3
Total	1,408	51	0	1,459	+ 19

People In Immigration Detention

Nationality

At 30 September 2021, there were 1459 people in held immigration detention facilities. Of these 1459 people, 16.5 per cent were from New Zealand, 9.6 per cent were from Iran, 9.3 per cent were from Vietnam, 4.5 per cent were from Sudan and 4.2 per cent were from India.

Table 6 – People in Held Immigration Detention Facilities by Nationality at 30 September 2021

Nationalities	Men	Women	Children	Total
New Zealand	220	21	0	241
Iran	<140	<5	0	140
Vietnam	128	8	0	136
Sudan	<65	<5	0	65
India	<65	<5	0	61
Iraq	<65	0	0	60
Afghanistan	53	0	0	53
United Kingdom	<55	<5	0	53
Sri Lanka	48	0	0	48
Fiji	<45	<5	0	44
Other	545	13	0	558
Total	1,408	51	0	1,459

At 30 September 2021, 562 were people living in the community after being approved for a residence determination. Of these 562 people, 52.7 per cent were from Iran, 10 per cent were Stateless, 9.8 per cent were from Sri Lanka, 9.4 per cent were from Somalia and 2.8 per cent were from Iraq.

Table 7 – People in the Community under Residence Determination by Nationality at 30 September 2021

Nationalities	Men	Women	Children	Total
Iran	100	100	96	296
Stateless	26	11	19	56
Sri Lanka	21	11	23	55
Somalia	19	18	16	53
Iraq	13	<5	<5	16
Other	45	<25	<25	86
Total	224	162	176	562

Children In Immigration Detention

At 30 September 2021 there were no children (aged less than 18 years) in Immigration Residential Housing, Immigration Transit Accommodation and Alternative Places of Detention.

Figure 3 – Children in Immigration Residential Housing, Immigration Transit Accommodation and Alternative Places of Detention

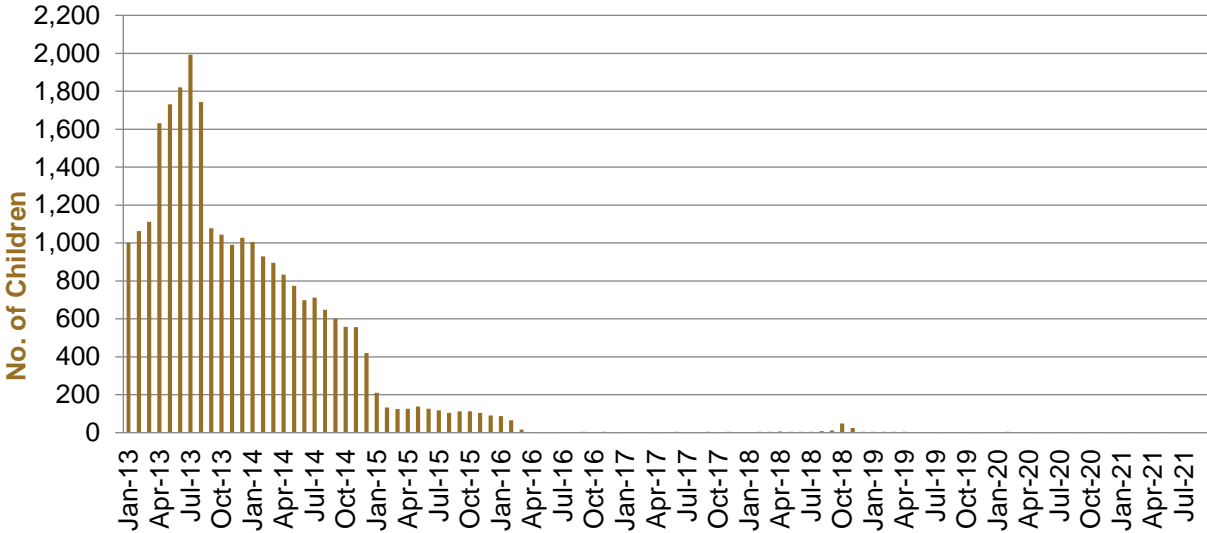


Figure 3 above, shows the number of children in IDFs and APODs from January 2013 to the date of this report. The continuous increase in the number of children in IDFs from April 2013 to Aug 2013 was due to a rapid increase in IMAs during this period. The number of children in IDFs continued to decline during the late 2013 and 2014, with further reduction in January 2015.

At 30 September 2021, the number of children living in the community after being approved for a residence determination has increased by 1 to 176 from 175 since the previous report.

Figure 4 – Children in the Community under Residence Determination

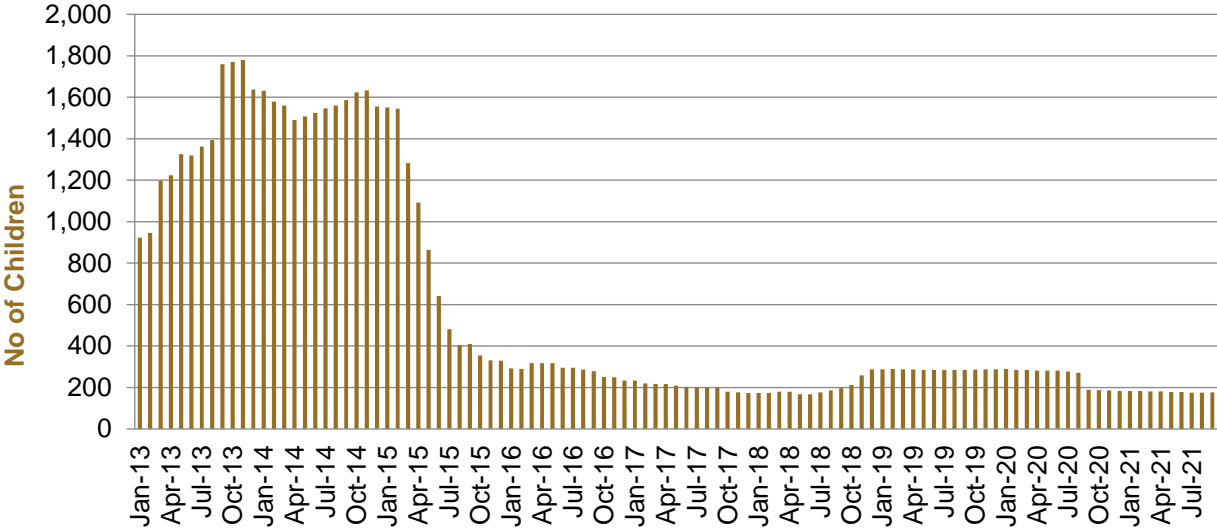


Figure 4 above, shows the number of children in the community under residence determination from January 2013 to the date of this report. The number of children in the community under residence determination, has levelled off at its lowest number since the peak in November 2013, as a result of releases into the community on Bridging E visas.

Table 8 – Children in Immigration Detention and IMA Children in the Community on a Bridging E Visa at 30 September 2021

Placement Type	Children
Immigration Residential Housing	0
Immigration Transit Accommodation	0
Alternative Places of Detention	0
Total Facility	0
Total in the Community under a Residence Determination	176
Total IMAs in the Community on a Bridging E visa (including in re-grant process)	1,636

Time In Immigration Detention Facilities

At 30 September 2021, there were 1459 people in immigration detention facilities.

Of these 1459 people, 15.8 per cent had been detained for 91 days or less and 46.1 per cent had been detained for 365 days or less.

Table 9 – Length of Time of People in Held Immigration Detention Facilities at 30 September 2021

Period Detained	Total	% of Total
7 days or less	25	1.7%
8 days - 31 days	57	3.9%
32 days - 91 days	148	10.1%
92 days - 182 days	194	13.3%
183 days - 365 days	249	17.1%
366 days - 547 days	138	9.5%
548 days - 730 days	138	9.5%
731 days - 1095 days	193	13.2%
1096 days - 1460 days	125	8.6%
1461 days - 1825 days	75	5.1%
Greater than 1825 days	117	8.0%
Total	1,459	100%

At 30 September 2021, the average period of time for people held in detention facilities was 689 days.

Figure 5 – Average Number of Days of People in Held Immigration Detention Facilities only

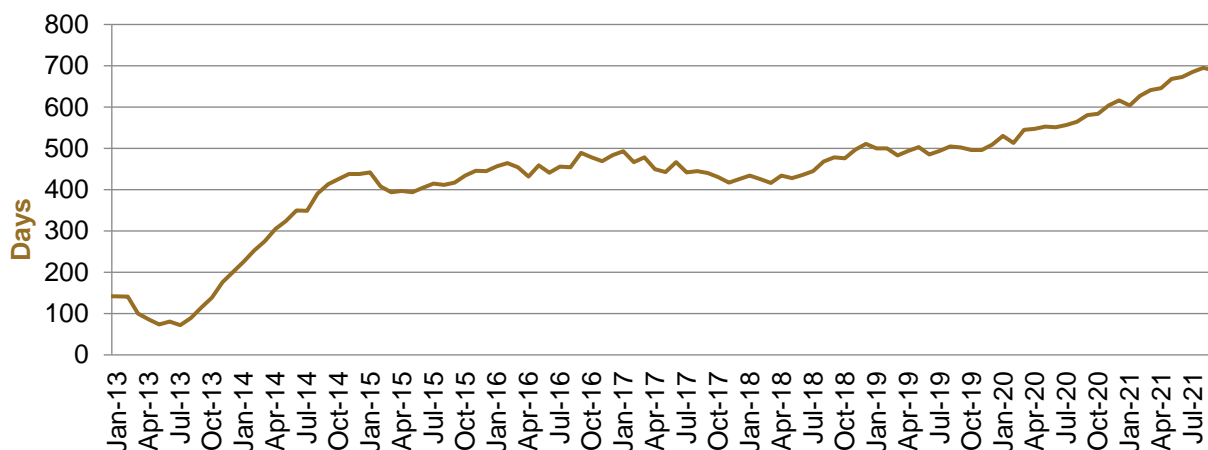


Figure 5 above, shows the average days in held immigration detention at the end of each month from January 2013 to the date of this report. The average period of time for people held in detention facilities steadily increased from July 2013 to January 2015. Between November 2018 and December 2019 the average number of days remained around 500. Since January 2020 the average period of time for people held in detention facilities has steadily increased.

The time an individual spends in immigration detention depends on a range of factors, including the complexity of their case, the legal processes they pursue and whether they voluntarily choose to leave Australia.

Time In Community Under Residence Determination

Of the 562 people in the community under residence determination, as at 30 September 2021, 7.7 per cent had been in the community for 91 days or less and 13.2 per cent had been in the community for 365 days or less.

Table 10 – Length of Time of People in Community under Residence Determination at 30 September 2021

Period Detained	Total	% of Total
7 days or less	<5	<1.0%
8 days - 31 days	<5	<1.0%
32 days - 91 days	40	7.1%
92 days - 182 days	<5	<1.0%
183 days - 365 days	28	5.0%
366 days - 547 days	<5	<1.0%
548 days - 730 days	10	1.8%
731 days - 1095 days	212	37.7%
1096 days - 1460 days	75	13.3%
1461 days - 1825 days	45	8.0%
Greater than 1825 days	142	25.3%
Total	562	100%