



Australian Government
Department of Immigration
and Border Protection



Australian
BORDER FORCE

Immigration Detention and Community Statistics Summary

31 October 2015

Table of Contents

Immigration Detention and Community Statistics Summary.....	1
About this report.....	3
Enquiries	3
Acronyms	3
Immigration Detention And Community Statistics Summary	4
Community Population By State/Territory.....	5
Immigration Detention Population.....	6
From 1990 to 31 October 2015	6
People In Immigration Detention Facilities.....	7
Arrival Type.....	7
People in Immigration Detention.....	8
Nationality	8
Children In Immigration Detention.....	9
Time In Immigration Detention Facilities.....	11
Time In Community Detention.....	12

About this report

This report provides an overview of the number of people in immigration detention and Regional Processing Centres as at midnight on the date of the report. The report is produced on a monthly basis.

Data is sourced from several departmental processing and recording systems. Data relating to the immigration detention population is dynamic and there can be delays in transmission of information from the department's immigration detention network operations. Variations in figures between this report and previous issues can occur. Due to these issues, data from the current financial year should always be considered provisional.

Further information about immigration detention is available at:

<http://www.border.gov.au/Busi/Comp/Immigration-detention>

Enquiries

Comments or enquiries concerning this report should be sent using the department's client service feedback form quoting the name and date of the report.

See: <http://www.border.gov.au/about/contact/make-enquiry/enquiries-and-feedback>

Acronyms

Table 1 – Acronyms used in this document

Acronym	Description
APOD	Alternative Place of Detention
IDC/F	Immigration Detention Centre/Facility
IRH	Immigration Residential Housing
ITA	Immigration Transit Accommodation
RPC	Regional Processing Centre

Immigration Detention And Community Statistics Summary

As at 31 October 2015, there were 1,949 people in immigration detention facilities, including 1,744 in immigration detention on the mainland and 205 in immigration detention on Christmas Island.

A further 632 people were living in the community after being approved for a residence determination and 29,019 were living in the community after grant of a Bridging Visa E.

Table 2 – People in Immigration Detention Facilities (IDFs), Alternative Places of Detention (APODs), Regional Processing Centres (RPCs) and the Community

Place of immigration detention	Men	Women	Children	Total	Change from Previous Summary 30/09/15
Christmas Island IDC	205	0	0	205	- 80
Maribyrnong IDC	97	10	0	107	- 6
Perth IDC	24	12	0	36	- 7
Villawood IDC	326	38	0	364	- 31
Yongah Hill IDC	405	0	0	405	+ 60
Christmas Island APODs	0	0	0	0	0
Mainland APODs	439	89	69	597	- 33
Total IDCs/APODs	1,496	149	69	1,714	- 97
Perth IRH	4	4	5	13	+ 7
Sydney IRH	7	8	12	27	+ 1
Adelaide ITA	21	4	0	25	+ 7
Brisbane ITA	22	22	8	52	- 4
Melbourne ITA	66	34	18	118	- 9
Total in IRH and ITA	120	72	43	235	+ 2
Total Facility	1,616	221	112	1,949	- 95
Total Community under Residence Determination	161	117	354	632	- 112
Total Community on Bridging Visa E (Including people in a re-grant process)	21,629	3,377	4,013	29,019	+ 82
Republic of Nauru (RPC)	413	113	95	621	- 10
Manus Province, Papua New Guinea (RPC)	929	0	0	929	- 5
Total RPCs	1,342	113	95	1,550	- 15

Community Population By State/Territory

Of the 632 people approved for a residence determination to live in the community, 31.5 per cent were in Victoria, 23.1 per cent in New South Wales, 22.8 per cent in Queensland, 10.6 per cent in Western Australia, 9.8 per cent in South Australia, 1.1 per cent in Tasmania and 1.1 per cent in the Australian Capital Territory.

Table 3 – Community Detention Population by State/Territory as at 31 August 2015

State/Territory	Adult Male	Adult Female	Child Male (<18 years)	Child Female (<18 years)	Total
Victoria	55	31	82	31	199
New South Wales	29	29	53	35	146
Queensland	39	30	46	29	144
Western Australia	18	14	26	9	67
South Australia	14	12	16	20	62
Australian Capital Territory	3	0	3	1	7
Tasmania	3	1	3	0	7
Total	161	117	229	125	632

Immigration Detention Population

From 1990 to 31 October 2015

The number of people in immigration detention continues to reduce as a result of releases into the community.

Figure 1 – Population in Immigration Detention

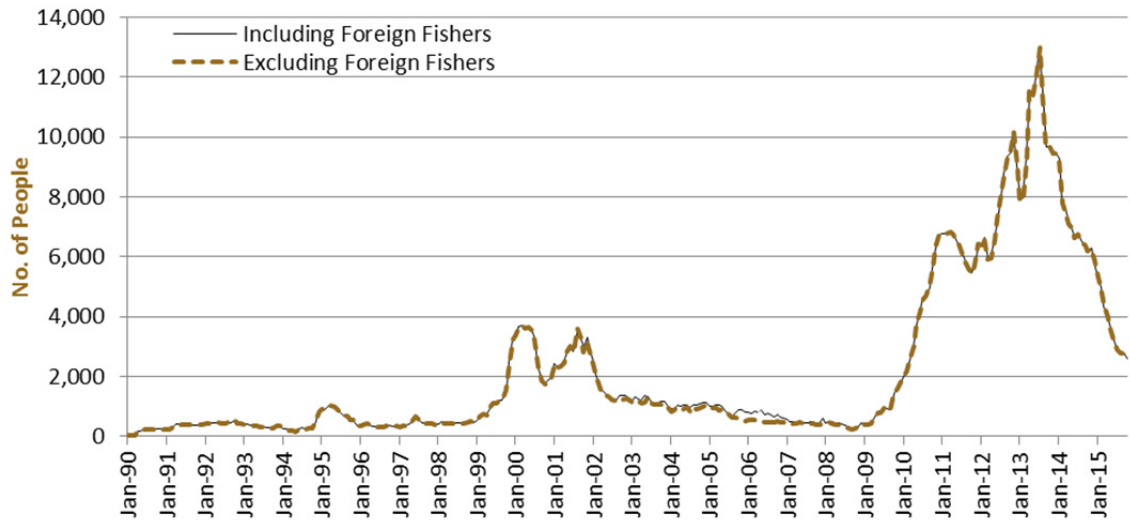


Figure 1 above, shows the number of people in immigration detention from 1990 to the date of this report. The trend had a consistent rise of people in immigration detention from January 2009 to January 2013, but has since decreased and continues to decline steadily.

People In Immigration Detention Facilities

Arrival Type

The number of people in held immigration detention facilities, who arrived unlawfully by air or boat as at 31 October 2015 was 1,008, representing approximately 52 per cent of the total immigration detention population.

There were also 941 people (about 48 per cent of the total immigration population) who arrived in Australia lawfully and were subsequently taken into immigration detention and had visa cancellations for either over staying or breaching their visa conditions.

Figure 2 – People in Held Immigration Detention Facilities by Arrival Type

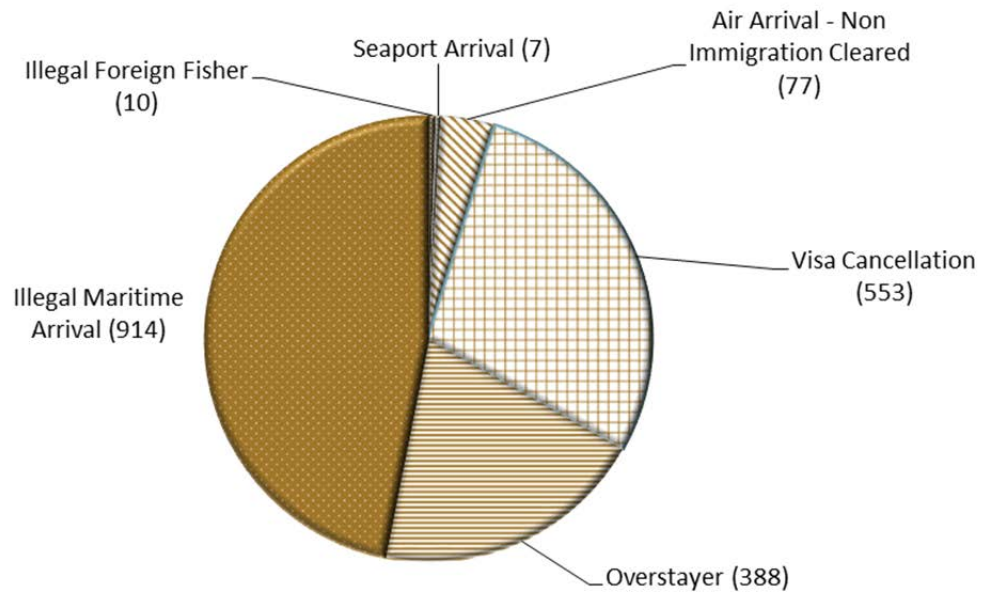


Figure 2 above, shows the number of people in held immigration detention facilities by arrival type, including Visa Overstayers, Visa Cancellations, Foreign Fishers, Irregular Maritime Arrivals, Unauthorised Air Arrivals, and if required – Inadequately Documented Crew Members and Others such as stowaways and ship deserters.

People in Immigration Detention

Nationality

As at 31 October 2015, there were 1,949 people in held immigration detention facilities. Of these 1,949 people, around 19.0 per cent were from Iran, 10.9 per cent were from New Zealand, 8.1 per cent were from Sri Lanka, 6.7 per cent were from China and 6.0 per cent were from Vietnam.

Table 4 – People in Held Immigration Detention Facilities as at 30 October 2015

Nationalities	Adult Male	Adult Female	Child Male (<18 years)	Child Female (<18 years)	Total
Iran	257	62	29	23	371
New Zealand	190	23	0	0	213
Sri Lanka	138	9	7	3	157
China	99	24	4	3	130
Vietnam	104	12	1	0	117
Stateless	61	7	6	5	79
Afghanistan	73	2	1	0	76
Iraq	51	5	1	2	59
United Kingdom	50	7	0	0	57
Other	593	70	18	9	690
Total	1,616	221	67	45	1,949

As at 31 October 2015, 632 were people living in the community after being approved for a residence determination. Of these 632 people, around 26.9 per cent were from Iran, 16.3 per cent were from Sri Lanka, 13.6 per cent were from Afghanistan and 12.5 per cent were from Vietnam.

Table 5 – People in the community under Residence Determination as at 30 October 2015

Nationalities	Adult Male	Adult Female	Child Male (<18 years)	Child Female (<18 years)	Total
Iran	52	47	40	31	170
Sri Lanka	28	16	37	22	103
Afghanistan	17	1	66	2	86
Vietnam	22	14	22	21	79
Stateless	17	12	23	17	69
Other	25	27	41	32	125
Total	161	117	229	125	632

Children In Immigration Detention

As at 31 October 2015, there were 112 children (aged under 18 years) in Immigration Residential Housing, Immigration Transit Accommodation and Alternative Places of Detention.

Figure 3 – Children in Immigration Residential Housing, Immigration Transit Accommodation and Alternative Places of Detention

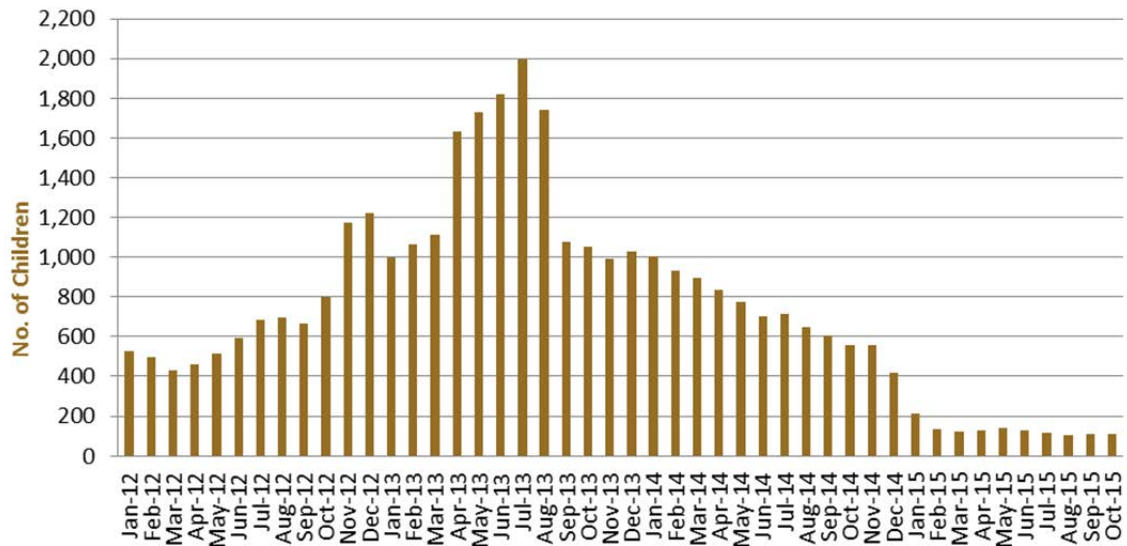


Figure 3 above, shows the number of children in immigration detention facilities and alternative places of detention from January 2012 to the date of this report. The increase in the number of children in detention facilities in April and June 2013 was due to a rapid increase in irregular maritime arrivals during this period. The number of children in immigration detention facilities reduced in September 2013, as children completed mandatory processing and were transferred into the community. The numbers of children in detention facilities continued to trend down during late 2013 and 2014, with a further reduction in January 2015. The numbers have levelled off since February 2015.

The number of children living in the community after being approved for a residence determination decreased in October 2015, to 354 children.

Figure 4 – Children in the community under Residence Determination

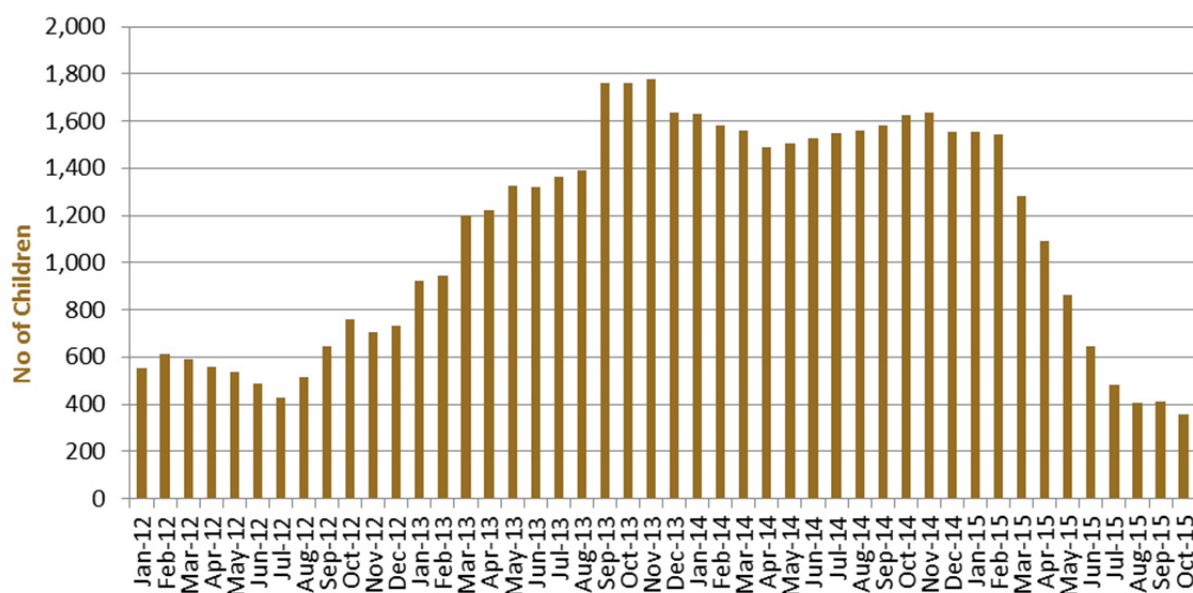


Figure 4 above, shows the number of children in community detention under residence determination from January 2012 to the date of this report. The number of children, in community detention under residence determination, has levelled off at its lowest number since the peak in November 2013, as a result of releases into the community on Bridging E visas.

Table 6 – Children in Immigration Detention and in the Community as at 30 October 2015

Placement Type	Children
Immigration Residential Housing	17
Immigration Transit Accommodation	26
Alternative Places of Detention	69
Total Facility	112
Total in the Community under a Residence Determination	354
Total in the Community on a Bridging E visa (including in re-grant process)	4,013

Time In Immigration Detention Facilities

As at 31 October 2015, there were 1,949 people in immigration detention facilities. Of these 1,949 people, around 24 per cent had been detained for 91 days or less and 55.5 per cent had been detained for 365 days or less.

Table 7 – Length of time in held immigration detention facilities as at 30 October 2015

Period Detained	Total	% of Total
7 days or less	61	3.1%
8 days - 31 days	155	8.0%
32 days - 91 days	251	12.9%
92 days - 182 days	258	13.2%
183 days - 365 days	357	18.3%
366 days - 547 days	236	12.1%
548 days - 730 days	183	9.4%
Greater than 730 days	448	23.0%
Total	1,949	100%

The average period of time for people held in detention facilities has increased to 434 days as at 31 October 2015.

Figure 5 – Average number of days in held immigration detention facilities only

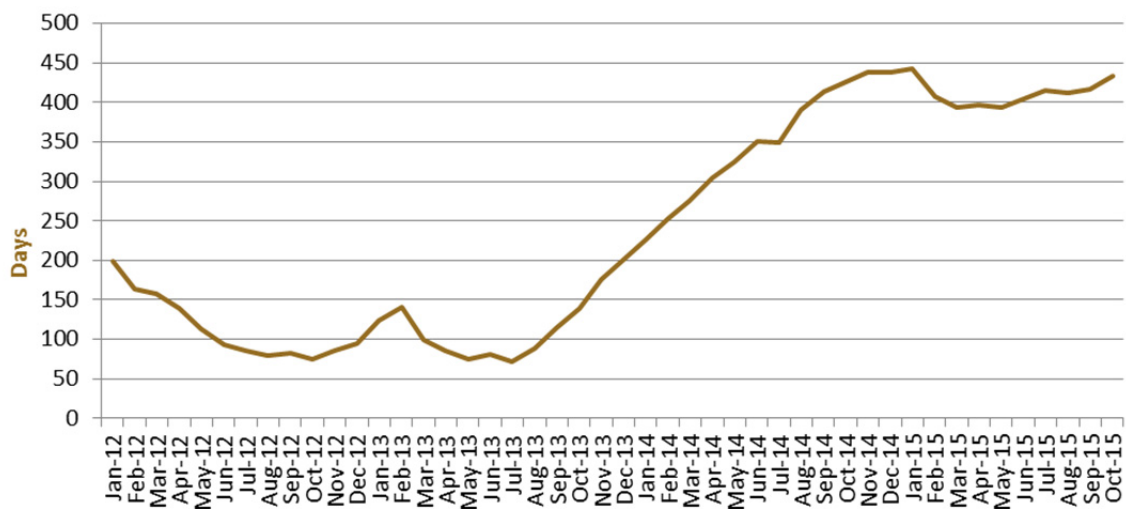


Figure 5 above, shows the average days in held immigration detention only by month from January 2012 to the date of this report. The average period of time for people held in detention facilities steadily increased from July 2013 to January 2015. Between January 2015 and March 2015, the average period of time for people in held detention facilities decreased. Since May 2015, the average days in held immigration detention has increased steadily though has not reached the peak of January 2015.

Time In Community Detention

Of the 632 people in Community Detention, as at 31 October 2015, 5.1 per cent had been in Community Detention for 91 days or less and 23.3 per cent had been in Community Detention for 365 days or less.

Table 8 – People in Community Detention by Length of Time in Community Detention

Period Detained	Total	% of Total
7 days or less	0	0.0%
8 days - 31 days	5	0.8%
32 days - 91 days	27	4.3%
92 days - 182 days	32	5.1%
183 days - 365 days	83	13.1%
366 days - 547 days	67	10.6%
548 days - 730 days	41	6.5%
Greater than 730 days	377	59.7%
Total	632	100%