



Australian Government  
Department of Immigration  
and Border Protection



Australian  
**BORDER FORCE**

# Immigration Detention and Community Statistics Summary

31 May 2016

## Table of Contents

Immigration Detention and Community Statistics Summary.....	1
About this report.....	3
Enquiries .....	3
Acronyms .....	3
Immigration Detention And Community Statistics Summary .....	4
Community Population By State/Territory .....	5
Immigration Detention Population .....	6
From 1990 to 31 May 2016 .....	6
People In Immigration Detention Facilities.....	7
Arrival Type.....	7
People in Immigration Detention .....	8
Nationality .....	8
Children In Immigration Detention.....	9
Time In Immigration Detention Facilities .....	11
Time In Community Detention.....	12

## About this report

This report provides an overview of the number of people in immigration detention and Regional Processing Centres as at midnight on the date of the report. The report is produced on a monthly basis.

Data is sourced from several departmental processing and recording systems. Data relating to the immigration detention population is dynamic and there can be delays in transmission of information from the department's immigration detention network operations. Variations in figures between this report and previous issues can occur. Due to these issues, data from the current financial year should always be considered provisional.

Further information about immigration detention is available at:

<http://www.border.gov.au/Busi/Comp/Immigration-detention>

## Enquiries

Comments or enquiries concerning this report should be sent using the department's client service feedback form quoting the name and date of the report.

See: <http://www.border.gov.au/about/contact/make-enquiry/enquiries-and-feedback>

## Acronyms

**Table 1 – Acronyms used in this document**

Acronym	Description
APOD	Alternative Place of Detention
IMA	Illegal Maritime Arrival
IDC/F	Immigration Detention Centre/Facility
IRH	Immigration Residential Housing
ITA	Immigration Transit Accommodation
RPC	Regional Processing Centre

# Immigration Detention And Community Statistics Summary

At 31 May 2016, there were 1570 people in immigration detention facilities, including 1393 in immigration detention on the mainland and 177 in immigration detention on Christmas Island.

A further 658 people were living in the community after being approved for a residence determination and 28,329 were living in the community after grant of a Bridging Visa E.

At 31 May 2016, there were no children in held immigration detention facilities. The table below reflects figures based on records in Department of Immigration and Border Protection systems.

**Table 2 – People in Immigration Detention Facilities (IDFs), Alternative Places of Detention (APODs), Regional Processing Centres (RPCs) and the Community at 31 May 2016**

Place of immigration detention	Men	Women	Children	Total	Change from Previous Summary 30/04/16
Christmas Island IDC	177	0	0	177	- 9
Maribyrnong IDC	101	11	0	112	+ 9
Perth IDC	23	7	0	30	+ 3
Villawood IDC	385	47	0	432	- 28
Yongah Hill IDC	354	0	0	354	- 10
Christmas Island APODs	0	0	0	0	0
Mainland APODs	214	<5	0	216	- 155
<b>Total IDCs/APODs</b>	<b>1,254</b>	<b>67</b>	<b>0</b>	<b>1,321</b>	<b>- 190</b>
Perth IRH	<5	<5	0	7	0
Adelaide ITA	19	5	0	24	0
Brisbane ITA	61	19	0	80	+ 13
Melbourne ITA	92	46	0	138	+ 52
<b>Total in IRH and ITA</b>	<b>176</b>	<b>73</b>	<b>0</b>	<b>249</b>	<b>+ 65</b>
<b>Total Facility</b>	<b>1,430</b>	<b>140</b>	<b>0</b>	<b>1,570</b>	<b>- 125</b>
<b>Total in Community under Residence Determination</b>	<b>183</b>	<b>158</b>	<b>317</b>	<b>658</b>	<b>+ 13</b>
<b>Total in Community on Bridging Visa E (Including people in a re-grant process)</b>	<b>20,880</b>	<b>3,382</b>	<b>4,067</b>	<b>28,329</b>	<b>- 174</b>
Republic of Nauru (RPC)	361	55	50	466	- 3
Manus Province, Papua New Guinea (RPC)	843	0	0	843	- 55
<b>Total RPCs</b>	<b>1,204</b>	<b>55</b>	<b>50</b>	<b>1,309</b>	<b>- 58</b>

# Community Population By State/Territory

Of the 658 people approved for a residence determination to live in the community, 34.2 per cent were in Victoria, 26.7 per cent in New South Wales, 22.6 per cent in Queensland, 7.9 per cent in South Australia, 7.9 per cent in Western Australia, 0.5 per cent in Tasmania and 0.2 per cent in the Australian Capital Territory.

**Table 3 – Community Detention Population by State/Territory at 31 May 2016**

State/Territory	Adult Male	Adult Female	Child Male (<18 years)	Child Female (<18 years)	Total
Victoria	70	51	61	43	<b>225</b>
New South Wales	42	44	51	39	<b>176</b>
Queensland	39	39	39	32	<b>149</b>
South Australia	11	10	14	17	<b>52</b>
Western Australia	20	13	15	<5	<b>52</b>
Tasmania	<5	<5	<5	0	<b>&lt;5</b>
Australian Capital Territory	0	0	<5	0	<b>&lt;5</b>
<b>Total</b>	<b>183</b>	<b>158</b>	<b>182</b>	<b>135</b>	<b>658</b>

# Immigration Detention Population

## From 1990 to 31 May 2016

The number of people in immigration detention continues to reduce as a result of releases into the community.

**Figure 1 – Population in Immigration Detention**

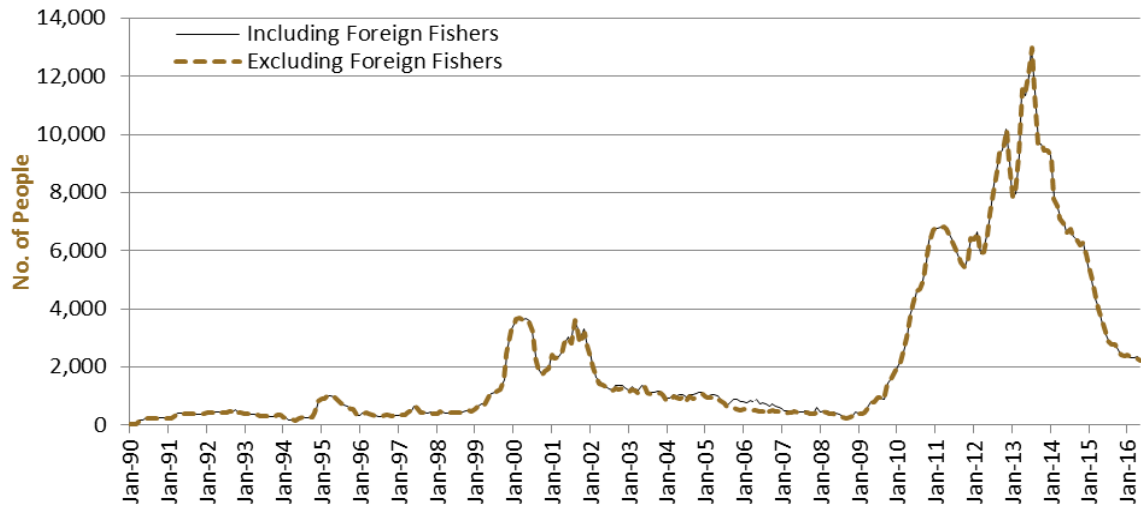


Figure 1 above, shows the number of people in immigration detention from 1990 to the date of this report. The trend had a consistent rise of people in immigration detention from January 2009 to January 2013, but has since decreased and continues to decline steadily.

# People In Immigration Detention Facilities

## Arrival Type

There were 612 people, who arrived unlawfully by air or boat, in held immigration detention facilities at 31 May 2016, representing approximately 39.0 per cent of the total immigration detention population.

There were also 958 people (about 61.0 per cent of the total immigration population) who arrived in Australia lawfully and were subsequently taken into immigration detention and had visa cancellations for either over staying or breaching their visa conditions.

**Figure 2 – People in Held Immigration Detention Facilities by Arrival Type**

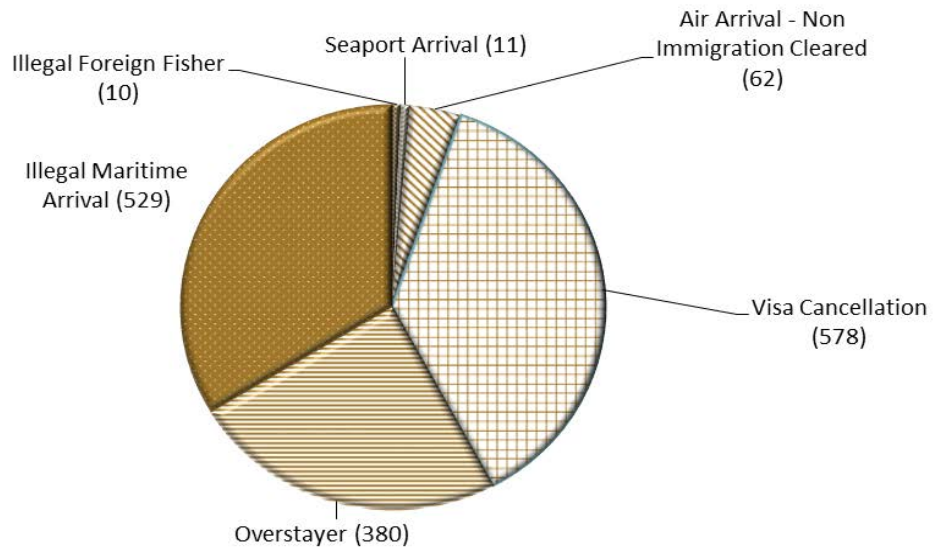


Figure 2 above, shows the number of people in held immigration detention facilities by arrival type, including Visa Overstayers, Visa Cancellations, Foreign Fishers, Irregular Maritime Arrivals, Unauthorised Air Arrivals, and if required – Inadequately Documented Crew Members and Others such as stowaways and ship deserters.

# People in Immigration Detention

## Nationality

At 31 May 2016, there were 1570 people in held immigration detention facilities. Of these 1570 people, 11.8 per cent were from Iran, 11.7 per cent were from New Zealand, 7.6 per cent were from Vietnam, 6.8 per cent were from China and 6.1 per cent were from Sri Lanka.

**Table 4 – People in Held Immigration Detention Facilities at 31 May 2016**

Nationalities	Adult Male	Adult Female	Child Male (<18 years)	Child Female (<18 years)	Total
Iran	164	22	0	0	<b>186</b>
New Zealand	171	13	0	0	<b>184</b>
Vietnam	105	14	0	0	<b>119</b>
China	86	21	0	0	<b>107</b>
Sri Lanka	94	<5	0	0	<b>95</b>
Afghanistan	68	0	0	0	<b>68</b>
India	59	8	0	0	<b>67</b>
Bangladesh	57	0	0	0	<b>57</b>
United Kingdom	48	6	0	0	<b>54</b>
Other	578	55	0	0	<b>633</b>
<b>Total</b>	<b>1,430</b>	<b>140</b>	<b>0</b>	<b>0</b>	<b>1,570</b>

At 31 May 2016, 658 were people living in the community after being approved for a residence determination. Of these 658 people, 40.6 per cent were from Iran, 15.8 per cent were from Sri Lanka, 9.7 per cent were Stateless and 7.6 per cent were from Vietnam.

**Table 5 – People in the community under Residence Determination at 31 May 2016**

Nationalities	Adult Male	Adult Female	Child Male (<18 years)	Child Female (<18 years)	Total
Iran	85	79	57	46	<b>267</b>
Sri Lanka	24	21	36	23	<b>104</b>
Stateless	19	12	17	16	<b>64</b>
Vietnam	13	8	12	17	<b>50</b>
Iraq	13	10	13	11	<b>47</b>
Other	29	28	47	22	<b>126</b>
<b>Total</b>	<b>183</b>	<b>158</b>	<b>182</b>	<b>135</b>	<b>658</b>



# Children In Immigration Detention

At 31 May 2016, there were no children (aged less than 18 years) in Immigration Residential Housing, Immigration Transit Accommodation and Alternative Places of Detention.

**Figure 3 – Children in Immigration Residential Housing, Immigration Transit Accommodation and Alternative Places of Detention**

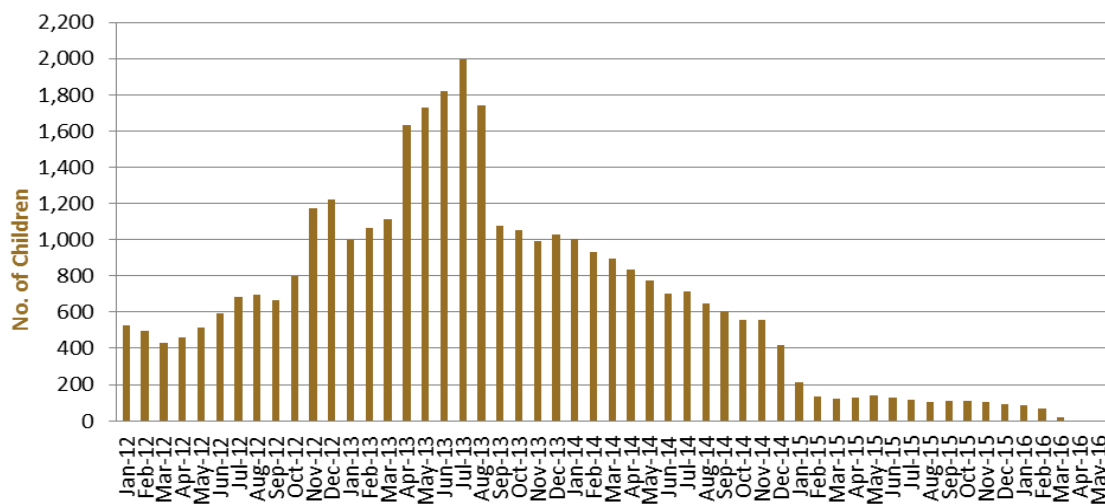


Figure 3 above, shows the number of children in immigration detention facilities and alternative places of detention from January 2012 to the date of this report. The continuous increase in the number of children in detention facilities from April 2013 to August 2013 was due to a rapid increase in irregular maritime arrivals during this period. The number of children in immigration detention facilities reduced in September 2013, as children completed mandatory processing and were transferred into the community. The number of children in detention facilities continued to decline during the late 2013 and 2014, with further reduction in January 2015. The number of children continued to reduce and at 31 May 2016 there were no children in held detention facilities.

At 31 May 2016, the number of children living in the community after being approved for a residence determination remained steady at 317.

**Figure 4 – Children in the community under Residence Determination**

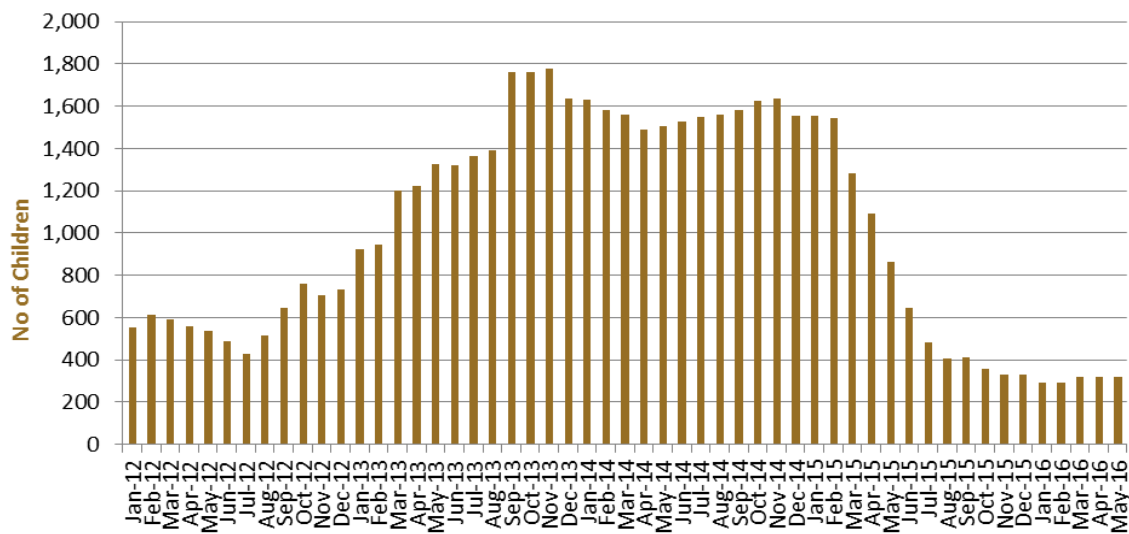


Figure 4 above, shows the number of children in community detention under residence determination from January 2012 to the date of this report. The number of children, in community detention under residence determination, has levelled off at its lowest number since the peak in November 2013, as a result of releases into the community on Bridging E visas.

**Table 6 – Children in Immigration Detention and in the Community at 31 May 2016<sup>1</sup>**

Placement Type	Children
Immigration Residential Housing	0
Immigration Transit Accommodation	0
Alternative Places of Detention	0
<b>Total Facility</b>	<b>0</b>
<b>Total in the Community under a Residence Determination</b>	<b>317</b>
<b>Total in the Community on a Bridging E visa (including in re-grant process)</b>	<b>4,067</b>

(1)<sup>1</sup> At 31 May 2016, there were no children in held immigration detention facilities. The table above reflects figures based on records in Department of Immigration and Border Protection systems.

# Time In Immigration Detention Facilities

At 31 May 2016, there were 1570 people in immigration detention facilities. Of these 1570 people, around 26.8 per cent had been detained for 91 days or less and 55.9 per cent had been detained for 365 days or less.

**Table 7 – Length of time in held immigration detention facilities at 31 May 2016**

Period Detained	Total	% of Total
7 days or less	57	3.6%
8 days - 31 days	143	9.1%
32 days - 91 days	221	14.1%
92 days - 182 days	182	11.6%
183 days - 365 days	274	17.4%
366 days - 547 days	199	12.7%
548 days - 730 days	95	6.1%
Greater than 730 days	399	25.4%
<b>Total</b>	<b>1,570</b>	<b>100%</b>

The average period of time for people held in detention facilities was 459 days at 31 May 2016.

**Figure 5 – Average number of days in held immigration detention facilities only**

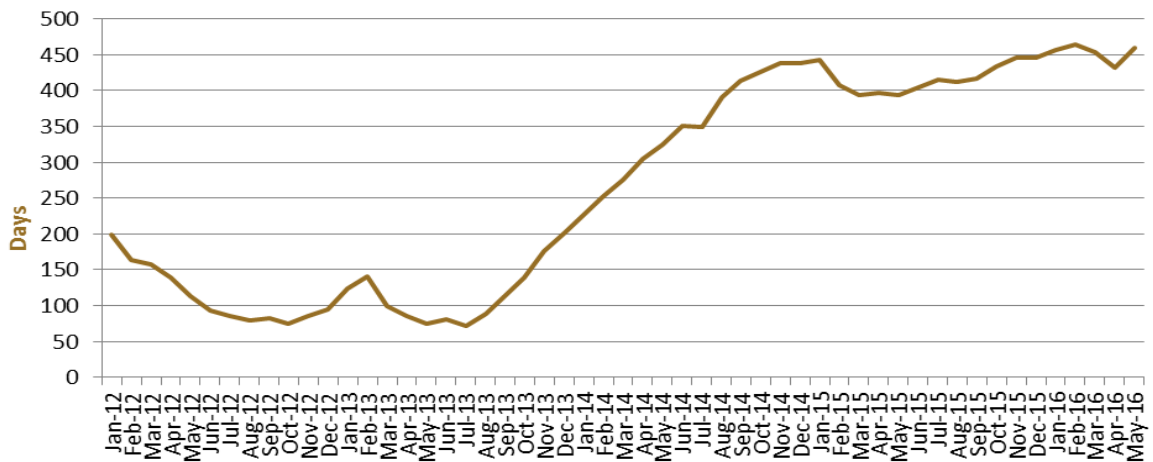


Figure 5 above, shows the average days in held immigration detention only by month from January 2012 to the date of this report. The average period of time for people held in detention facilities steadily increased from July 2013 to January 2015. Between January 2015 and March 2015, the average period of time for people in held detention facilities decreased. Since May 2015, the average days in held immigration detention has increased steadily.

# Time In Community Detention

Of the 658 people in Community Detention at 31 May 2016, 24.2 per cent had been in Community Detention for 91 days or less and 46.2 per cent had been in Community Detention for 365 days or less.

**Table 8 – People in Community Detention by Length of Time in Community Detention at 31 May 2016**

Period Detained	Total	% of Total
7 days or less	12	1.8%
8 days - 31 days	10	1.5%
32 days - 91 days	137	20.8%
92 days - 182 days	96	14.6%
183 days - 365 days	49	7.4%
366 days - 547 days	56	8.5%
548 days - 730 days	41	6.2%
Greater than 730 days	257	39.1%
<b>Total</b>	<b>658</b>	<b>100%</b>