



Australian Government  
Department of Immigration  
and Border Protection



Australian  
**BORDER FORCE**

# Immigration Detention and Community Statistics Summary

31 January 2017

## Table of Contents

Immigration Detention and Community Statistics Summary.....	1
About this report.....	3
Enquiries .....	3
Acronyms .....	3
Immigration Detention And Community Statistics Summary .....	4
Community Population By State/Territory .....	5
Immigration Detention Population .....	6
From 1990 to 31 January 2017 .....	6
People In Immigration Detention Facilities.....	7
Arrival Type.....	7
People In Immigration Detention.....	8
Nationality .....	8
Children In Immigration Detention.....	9
Time In Immigration Detention Facilities .....	11
Time In Community Under Residence Determination.....	12

## About this report

This report provides an overview of the number of people in immigration detention and Regional Processing Centres as at midnight on the date of the report. The report is produced on a monthly basis.

Data is sourced from several departmental processing and recording systems. Data relating to the immigration detention population is dynamic and there can be delays in transmission of information from the department's immigration detention network operations. Variations in figures between this report and previous issues can occur. Due to these issues, data from the current financial year should always be considered provisional.

Further information about immigration detention is available at:

<http://www.border.gov.au/about/immigration-detention-in-australia>

## Enquiries

Comments or enquiries concerning this report should be sent using the department's client service feedback form quoting the name and date of the report.

See: <http://www.border.gov.au/about/contact/make-enquiry/enquiries-and-feedback>

## Acronyms

**Table 1 – Acronyms used in this document**

Acronym	Description
APOD	Alternative Place of Detention
IMA	Illegal Maritime Arrival
IDC/F	Immigration Detention Centre/Facility
IRH	Immigration Residential Housing
ITA	Immigration Transit Accommodation
RPC	Regional Processing Centre
S501	Section 501 of the Migration ACT
S501 Visa Cancellation	Visa cancellations based on character or related grounds

# Immigration Detention And Community Statistics Summary

At 31 January 2017, there were 1351 people in immigration detention facilities, including 1082 in immigration detention on the mainland and 269 in immigration detention on Christmas Island.

A further 568 people were living in the community after being approved for a residence determination and 25,252 were living in the community after grant of a Bridging Visa E.

The table below reflects figures based on records in Department of Immigration and Border Protection systems.

**Table 2 – People in Immigration Detention Facilities (IDFs), Alternative Places of Detention (APODs), Regional Processing Centres (RPCs) and the Community at 31 January 2017**

Place of immigration detention	Men	Women	Children	Total	Change from Previous Summary 31/12/16
Christmas Island IDC	269	0	0	<b>269</b>	+ 6
Maribyrnong IDC	86	7	0	<b>93</b>	+ 6
Perth IDC	21	7	0	<b>28</b>	- 3
Villawood IDC	371	49	0	<b>420</b>	- 6
Yongah Hill IDC	326	0	0	<b>326</b>	- 30
Mainland APODs	<5	0	<5	<b>&lt;5</b>	+ 1
<b>Total IDCs/APODs</b>	<b>1,074</b>	<b>63</b>	<b>&lt;5</b>	<b>1,139</b>	<b>- 26</b>
Adelaide ITA	12	<5	0	<b>14</b>	- 1
Brisbane ITA	69	17	<5	<b>87</b>	+ 17
Melbourne ITA	96	15	0	<b>111</b>	- 3
<b>Total in IRH and ITA</b>	<b>177</b>	<b>34</b>	<b>&lt;5</b>	<b>212</b>	<b>+ 13</b>
<b>Total Facility</b>	<b>1,251</b>	<b>97</b>	<b>&lt;5</b>	<b>1,351</b>	<b>- 13</b>
<b>Total Community under Residence Determination</b>	<b>183</b>	<b>151</b>	<b>234</b>	<b>568</b>	<b>+ 2</b>
<b>Total Community on Bridging Visa E (Including people in a re-grant process)</b>	<b>18,126</b>	<b>3,201</b>	<b>3,925</b>	<b>25,252</b>	<b>- 558</b>
Republic of Nauru (RPC)	286	49	45	<b>380</b>	0
Manus Province, Papua New Guinea (RPC)	861	0	0	<b>861</b>	- 5
<b>Total RPCs</b>	<b>1,147</b>	<b>49</b>	<b>45</b>	<b>1,241</b>	<b>- 5</b>
<b>Detention Group</b>					
S501 Visa Cancellation	430	18	0	<b>448</b>	-3
Illegal Maritime Arrival	388	27	<5	<b>417</b>	2
Other	433	52	<5	<b>486</b>	-12
<b>Total</b>	<b>1,251</b>	<b>97</b>	<b>&lt;5</b>	<b>1,351</b>	<b>- 13</b>

## Community Population By State/Territory

Of the 568 people approved for a residence determination to live in the community, 35.9 per cent were in Victoria, 26.4 per cent in New South Wales, 22.5 per cent in Queensland, 8.1 per cent in Western Australia, 7 per cent in South Australia.

**Table 3 – Community Placement Population by State/Territory at 31 January 2017**

State/Territory	Adult Male	Adult Female	Child Male (<18 years)	Child Female (<18 years)	Total
Victoria	74	52	43	35	<b>204</b>
New South Wales	38	43	43	26	<b>150</b>
Queensland	39	33	35	21	<b>128</b>
Western Australia	22	12	8	<5	<b>46</b>
South Australia	10	11	8	11	<b>40</b>
<b>Total</b>	<b>183</b>	<b>151</b>	<b>137</b>	<b>97</b>	<b>568</b>

# Immigration Detention Population

## From 1990 to 31 January 2017

The number of people in immigration detention including foreign fishers has decreased by 11 to 1919 from 1930 in the previous report.

**Figure 1 – Population in Immigration Detention**

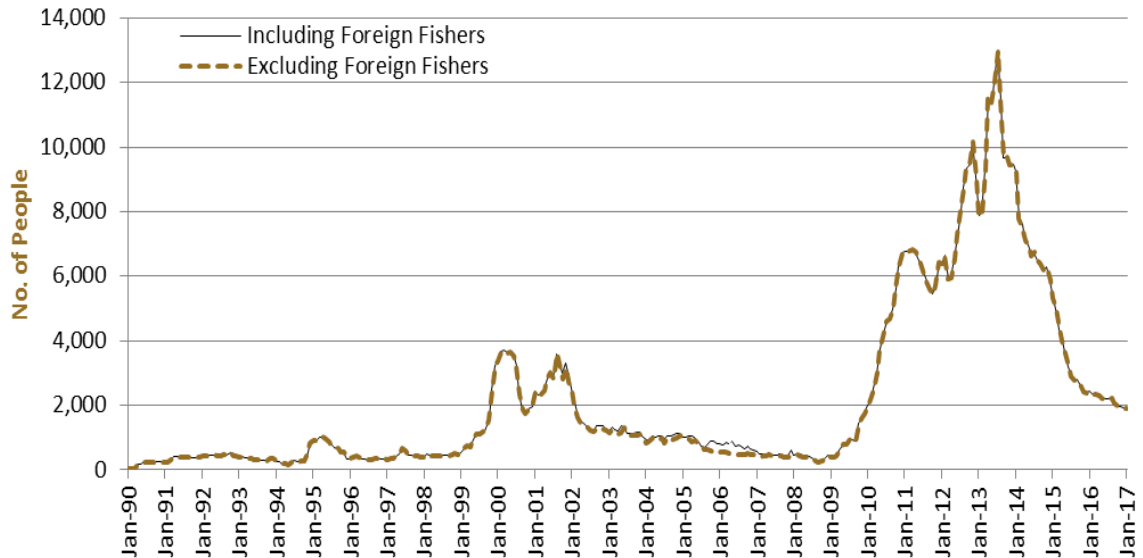


Figure 1 above, shows the number of people in immigration detention from 1990 to the date of this report. The trend had a consistent rise of people in immigration detention from January 2009 to January 2013, but has since had consistent decline.

# People In Immigration Detention Facilities

## Arrival Type

There were 485 people, who arrived unlawfully by air or boat, in held immigration detention facilities at 31 January 2017, representing 35.9 per cent of the total immigration detention population.

There were also 866 people (64.1 per cent of the total immigration population) who arrived in Australia lawfully and were subsequently taken into immigration detention and had visa cancellations for either over staying or breaching their visa conditions.

**Figure 2 – People in Held Immigration Detention Facilities by Detention Group**

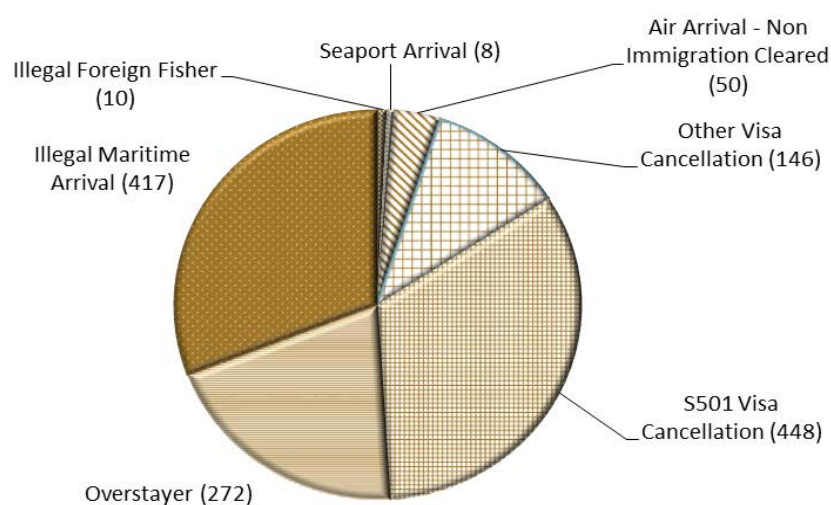


Figure 2 above, shows the number of people in held immigration detention facilities by detention group, including Overstayers, S501 and Other Visa Cancellations, Foreign Fishers, Irregular Maritime Arrivals, Unauthorised Air Arrivals, and if required – Inadequately Documented Crew Members and Others such as stowaways and ship deserters.

**Table 4 – People in Held Immigration Detention Facilities by Detention Group at 31 January 2017**

Place of immigration detention	S501 Visa Cancellation	IMA	Other Detention Group	Total	Change from Previous Summary 31/12/16
Christmas Island IDC	148	69	52	<b>269</b>	+ 6
Maribyrnong IDC	32	21	40	<b>93</b>	+ 6
Perth IDC	11	6	11	<b>28</b>	- 3
Villawood IDC	149	84	187	<b>420</b>	- 6
Yongah Hill IDC	84	138	104	<b>326</b>	- 30
Mainland APODs	0	<5	<5	<b>&lt;5</b>	+ 1
<b>Total IDCs/APODs</b>	<b>424</b>	<b>319</b>	<b>396</b>	<b>1,139</b>	<b>- 26</b>
Adelaide ITA	<5	<5	9	<b>14</b>	- 1
Brisbane ITA	23	33	31	<b>87</b>	+ 17
Melbourne ITA	0	61	50	<b>111</b>	- 3
<b>Total in IRH and ITA</b>	<b>24</b>	<b>98</b>	<b>90</b>	<b>212</b>	<b>+ 13</b>
<b>Total Facility</b>	<b>448</b>	<b>417</b>	<b>486</b>	<b>1,351</b>	<b>- 13</b>

# People In Immigration Detention

## Nationality

At 31 January 2017, there were 1351 people in held immigration detention facilities. Of these 1351 people, 14.1 per cent were from New Zealand, 9.5 per cent were from Iran, 7.3 per cent were from Vietnam, 6.4 per cent were from Sri Lanka and 4.4 per cent were from China.

**Table 5 – People in Held Immigration Detention Facilities at 31 January 2017**

Nationalities	Adult Male	Adult Female	Child Male (<18 years)	Child Female (<18 years)	Total
New Zealand	182	8	0	0	<b>190</b>
Iran	109	17	<5	0	<b>128</b>
Vietnam	92	7	0	0	<b>99</b>
Sri Lanka	86	0	0	0	<b>86</b>
China	49	10	0	0	<b>59</b>
India	53	<5	0	0	<b>55</b>
Bangladesh	48	<5	<5	0	<b>50</b>
Afghanistan	48	0	0	0	<b>48</b>
Malaysia	39	9	0	0	<b>48</b>
Other	545	43	0	0	<b>588</b>
<b>Total</b>	<b>1,251</b>	<b>97</b>	<b>&lt;5</b>	<b>0</b>	<b>1,351</b>

At 31 January 2017, 568 were people living in the community after being approved for a residence determination. Of these 568 people, 45.2 per cent were from Iran, 15.1 per cent were from Sri Lanka, 10 per cent were Stateless and 6.5 per cent were from Iraq.

**Table 6 – People in the Community under Residence Determination at 31 January 2017**

Nationalities	Adult Male	Adult Female	Child Male (<18 years)	Child Female (<18 years)	Total
Iran	89	78	51	39	<b>257</b>
Sri Lanka	24	19	28	15	<b>86</b>
Stateless	17	13	11	16	<b>57</b>
Iraq	12	7	9	9	<b>37</b>
Vietnam	12	9	9	5	<b>35</b>
Other	29	25	29	13	<b>96</b>
<b>Total</b>	<b>183</b>	<b>151</b>	<b>137</b>	<b>97</b>	<b>568</b>



# Children In Immigration Detention

At 31 January 2017, there were less than five children (aged less than 18 years) in Immigration Residential Housing, Immigration Transit Accommodation and Alternative Places of Detention.

**Figure 3 – Children in Immigration Residential Housing, Immigration Transit Accommodation and Alternative Places of Detention**

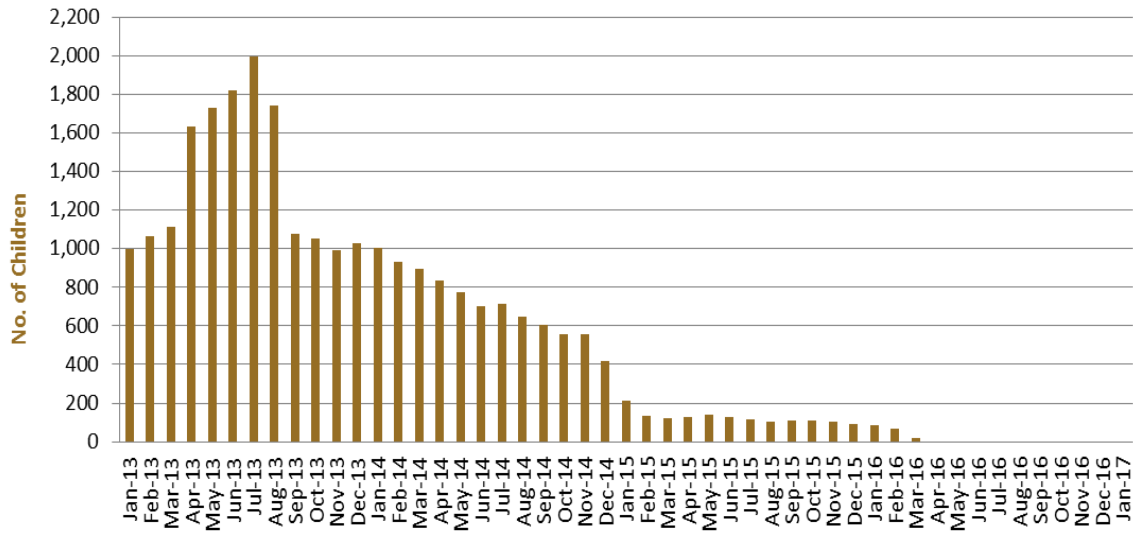


Figure 3 above, shows the number of children in immigration detention facilities and alternative places of detention from January 2013 to the date of this report. The continuous increase in the number of children in detention facilities from April 2013 to August 2013 was due to a rapid increase in irregular maritime arrivals during this period. The number of children in immigration detention facilities reduced in September 2013, as children completed mandatory processing and were transferred into the community. The number of children in detention facilities continued to decline during the late 2013 and 2014, with further reduction in January 2015.

At 31 January 2017, the number of children living in the community after being approved for a residence determination remained steady at 234.

**Figure 4 – Children in the community under Residence Determination**

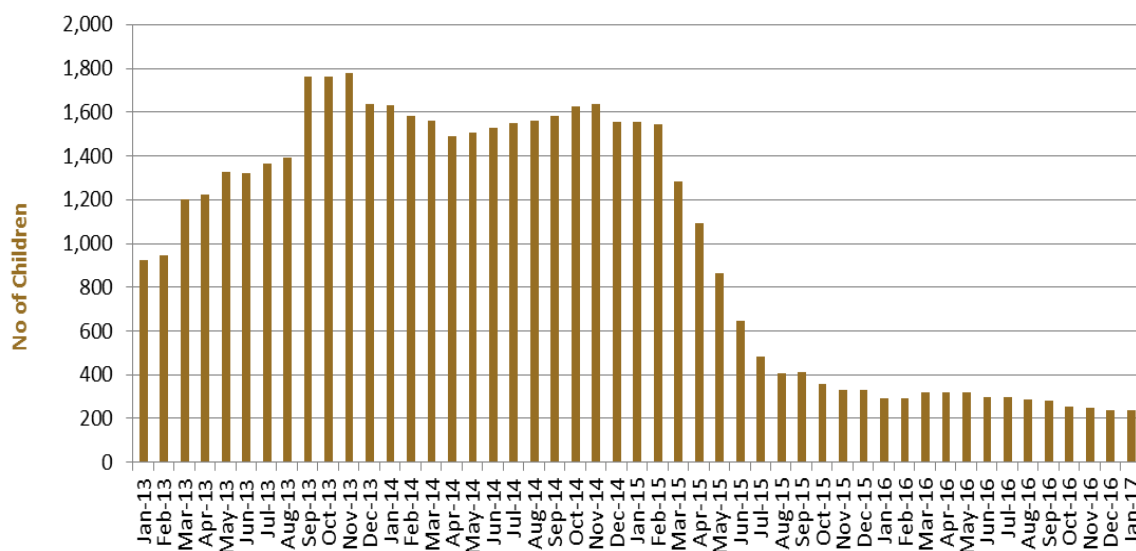


Figure 4 above, shows the number of children in the community under residence determination from January 2012 to the date of this report. The number of children in the community under residence determination, has levelled off at its lowest number since the peak in November 2013, as a result of releases into the community on Bridging E visas.

**Table 7 – Children in Immigration Detention and in the Community at 31 January 2017 <sup>1</sup>**

Placement Type	Children
Immigration Residential Housing	<5
Immigration Transit Accommodation	<5
Alternative Places of Detention	0
<b>Total Facility</b>	<b>&lt;5</b>
<b>Total in the Community under a Residence Determination</b>	<b>234</b>
<b>Total in the Community on a Bridging E visa (including in re-grant process)</b>	<b>3,925</b>

(1) <sup>1</sup> At 31 January 2017, there were less than five children in held immigration detention facilities. The table above reflects figures based on records in Department of Immigration and Border Protection systems.

# Time In Immigration Detention Facilities

At 31 January 2017, there were 1351 people in immigration detention facilities. Of these 1351 people, 29.6 per cent had been detained for 91 days or less and 55.7 per cent had been detained for 365 days or less.

**Table 8 – Length of time in Held Immigration Detention Facilities at 31 January 2017**

Period Detained	Total	% of Total
7 days or less	59	4.4%
8 days - 31 days	156	11.5%
32 days - 91 days	185	13.7%
92 days - 182 days	136	10.1%
183 days - 365 days	217	16.1%
366 days - 547 days	132	9.8%
548 days - 730 days	130	9.6%
Greater than 730 days	336	24.9%
<b>Total</b>	<b>1,351</b>	<b>100%</b>

At 31 January 2017, the average period of time for people held in detention facilities was 493 days.

**Figure 5 – Average number of days in Held Immigration Detention Facilities only**

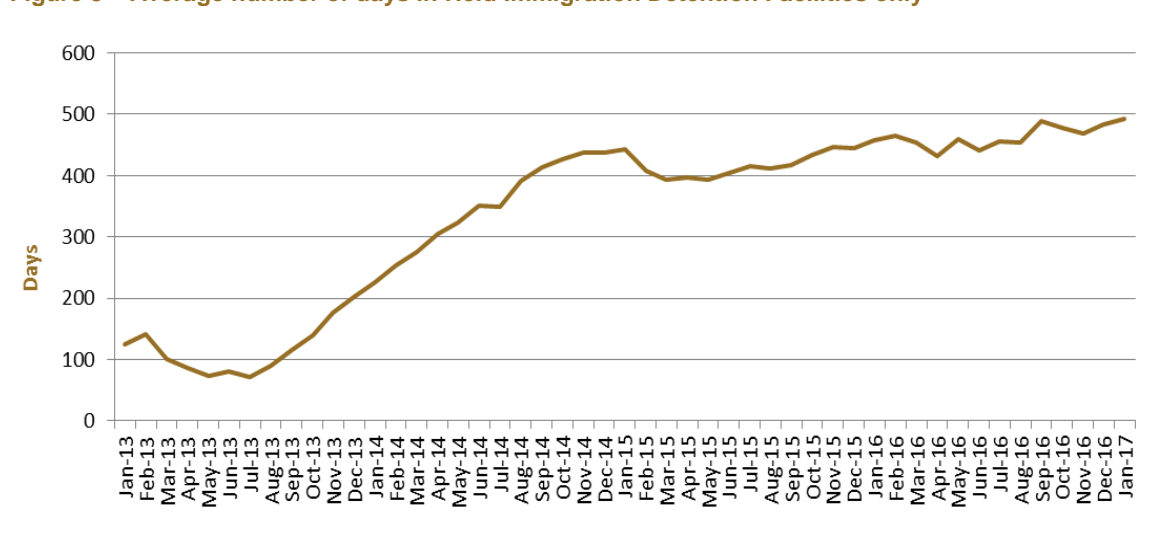


Figure 5 above, shows the average days in held immigration detention only by month from January 2013 to the date of this report. The average period of time for people held in detention facilities steadily increased from July 2013 to January 2015. Between January 2015 and March 2015, the average period of time for people in held detention facilities decreased.

## Time In Community Under Residence Determination

Of the 568 people in the community under residence determination, as at 31 January 2017, 5.1 per cent had been in the community for 91 days or less and 45.8 per cent had been in the community for 365 days or less.

**Table 9 – Length of Time in Community under Residence Determination at 31 January 2017**

Period Detained	Total	% of Total
7 days or less	5	0.9%
8 days - 31 days	<5	0.5%
32 days - 91 days	21	3.7%
92 days - 182 days	18	3.2%
183 days - 365 days	213	37.5%
366 days - 547 days	76	13.4%
548 days - 730 days	51	9.0%
Greater than 730 days	181	31.9%
<b>Total</b>	<b>568</b>	<b>100%</b>