



Australian Government  
Department of Immigration  
and Border Protection



Australian  
**BORDER FORCE**

# Immigration Detention and Community Statistics Summary

31 August 2016

## Table of Contents

Immigration Detention and Community Statistics Summary.....	1
About this report.....	3
Enquiries .....	3
Acronyms .....	3
Immigration Detention And Community Statistics Summary .....	4
Community Population By State/Territory .....	5
Immigration Detention Population .....	6
From 1990 to 31 August 2016.....	6
People In Immigration Detention Facilities.....	7
Arrival Type.....	7
People In Immigration Detention.....	8
Nationality .....	8
Children In Immigration Detention.....	9
Time In Immigration Detention Facilities .....	11
Time In Community Detention.....	12

## About this report

This report provides an overview of the number of people in immigration detention and Regional Processing Centres as at midnight on the date of the report. The report is produced on a monthly basis.

Data is sourced from several departmental processing and recording systems. Data relating to the immigration detention population is dynamic and there can be delays in transmission of information from the department's immigration detention network operations. Variations in figures between this report and previous issues can occur. Due to these issues, data from the current financial year should always be considered provisional.

Further information about immigration detention is available at:

<http://www.border.gov.au/Busi/Comp/Immigration-detention>

## Enquiries

Comments or enquiries concerning this report should be sent using the department's client service feedback form quoting the name and date of the report.

See: <http://www.border.gov.au/about/contact/make-enquiry/enquiries-and-feedback>

## Acronyms

**Table 1 – Acronyms used in this document**

Acronym	Description
APOD	Alternative Place of Detention
IMA	Illegal Maritime Arrival
IDC/F	Immigration Detention Centre/Facility
IRH	Immigration Residential Housing
ITA	Immigration Transit Accommodation
RPC	Regional Processing Centre
S501	Section 501 of the Migration ACT
S501 Visa Cancellation	Visa cancellations based on character or related grounds

# Immigration Detention And Community Statistics Summary

At 31 August 2016, there were 1602 people in immigration detention facilities, including 1355 in immigration detention on the mainland and 247 in immigration detention on Christmas Island.

A further 619 people were living in the community after being approved for a residence determination and 27,453 were living in the community after grant of a Bridging Visa E.

The table below reflects figures based on records in Department of Immigration and Border Protection systems.

**Table 2 – People in Immigration Detention Facilities (IDFs), Alternative Places of Detention (APODs), Regional Processing Centres (RPCs) and the Community at 31 August 2016**

Place of immigration detention	Men	Women	Children	Total	Change from Previous Summary 31/07/16
Christmas Island IDC	247	0	0	<b>247</b>	+ 5
Maribyrnong IDC	97	10	0	<b>107</b>	- 3
Perth IDC	18	14	0	<b>32</b>	+ 5
Villawood IDC	439	47	0	<b>486</b>	+ 56
Yongah Hill IDC	445	0	0	<b>445</b>	0
Mainland APODs	<5	<5	<5	<b>&lt;5</b>	- 26
<b>Total IDCs/APODs</b>	<b>1,247</b>	<b>72</b>	<b>&lt;5</b>	<b>1,321</b>	<b>+ 37</b>
Perth IRH	<5	<5	0	<b>5</b>	+ 2
Adelaide ITA	18	<5	0	<b>20</b>	+ 2
Brisbane ITA	71	16	<5	<b>88</b>	0
Melbourne ITA	137	31	0	<b>168</b>	- 27
<b>Total in IRH and ITA</b>	<b>228</b>	<b>52</b>	<b>&lt;5</b>	<b>281</b>	<b>- 23</b>
<b>Total Facility</b>	<b>1,475</b>	<b>124</b>	<b>&lt;5</b>	<b>1,602</b>	<b>+ 14</b>

<b>Total Community under Residence Determination</b>	<b>182</b>	<b>151</b>	<b>286</b>	<b>619</b>	<b>- 8</b>
--	------------	------------	------------	------------	------------

<b>Total Community on Bridging Visa E (Including people in a re-grant process)</b>	<b>20,069</b>	<b>3,347</b>	<b>4,037</b>	<b>27,453</b>	<b>- 348</b>
--	---------------	--------------	--------------	---------------	--------------

Republic of Nauru (RPC)	306	55	49	<b>410</b>	- 1
Manus Province, Papua New Guinea (RPC)	823	0	0	<b>823</b>	- 10
<b>Total RPCs</b>	<b>1,129</b>	<b>55</b>	<b>49</b>	<b>1,233</b>	<b>- 11</b>

Detention Group	Men	Women	Children	Total	Change from Previous Summary 31/07/16
S501 Visa Cancellation	480	24	0	<b>504</b>	+ 1
Illegal Maritime Arrival	468	32	<5	<b>501</b>	- 5
Other	527	68	<5	<b>597</b>	+ 18
<b>Total</b>	<b>1,475</b>	<b>124</b>	<b>&lt;5</b>	<b>1,602</b>	<b>+ 14</b>

# Community Population By State/Territory

Of the 619 people approved for a residence determination to live in the community, 36.2 per cent were in Victoria, 27.1 per cent in New South Wales, 21.0 per cent in Queensland, 7.8 per cent in Western Australia, 7.3 per cent in South Australia, 0.5 per cent in Tasmania and 0.2 per cent in the Australian Capital Territory.

**Table 3 – Community Detention Population by State/Territory at 31 August 2016**

State/Territory	Adult Male	Adult Female	Child Male (<18 years)	Child Female (<18 years)	Total
Victoria	76	52	56	40	<b>224</b>
New South Wales	39	43	50	36	<b>168</b>
Queensland	36	33	36	25	<b>130</b>
Western Australia	21	12	11	<5	<b>48</b>
South Australia	9	10	13	13	<b>45</b>
Tasmania	<5	<5	<5	0	<b>&lt;5</b>
Australian Capital Territory	0	0	<5	0	<b>&lt;5</b>
<b>Total</b>	<b>182</b>	<b>151</b>	<b>168</b>	<b>118</b>	<b>619</b>

# Immigration Detention Population

## From 1990 to 31 August 2016

The number of people in immigration detention including foreign fishers has increased by six to 2221 in the previous report.

Figure 1 – Population in Immigration Detention

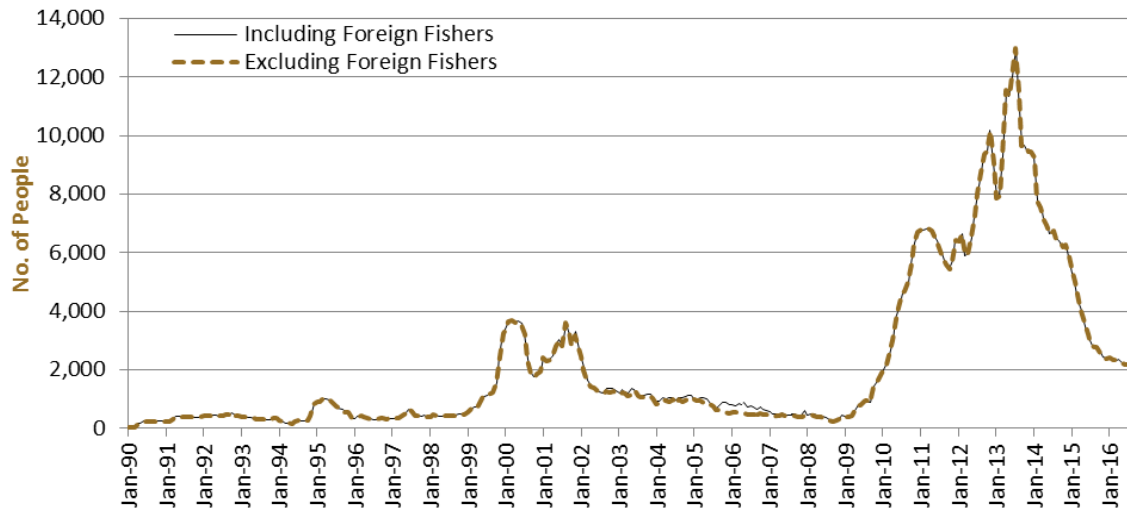


Figure 1 above, shows the number of people in immigration detention from 1990 to the date of this report. The trend had a consistent rise of people in immigration detention from January 2009 to January 2013, but has since had consistent decline.

# People In Immigration Detention Facilities

## Arrival Type

There were 581 people, who arrived unlawfully by air or boat, in held immigration detention facilities at 31 August 2016, representing 36.3 per cent of the total immigration detention population.

There were also 1021 people (63.7 per cent of the total immigration population) who arrived in Australia lawfully and were subsequently taken into immigration detention and had visa cancellations for either over staying or breaching their visa conditions.

**Figure 2 – People in Held Immigration Detention Facilities by Detention Group**

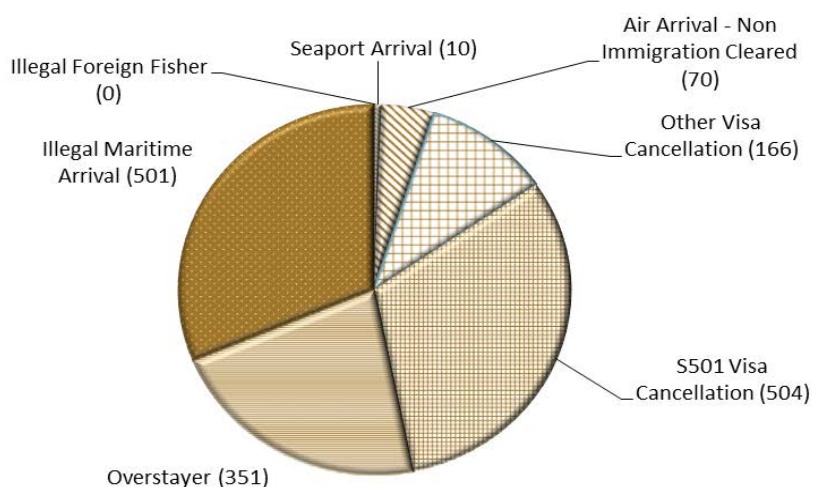


Figure 2 above, shows the number of people in held immigration detention facilities by detention group, including Overstayers, S501 and Other Visa Cancellations, Foreign Fishers, Irregular Maritime Arrivals, Unauthorised Air Arrivals, and if required – Inadequately Documented Crew Members and Others such as stowaways and ship deserters.

**Table 4 – People in Held Immigration Detention Facilities by Detention Group**

Place of immigration detention	S501 Visa Cancellation	IMA	Other Detention Group	Total	Change from Previous Summary 31/07/16
Christmas Island IDC	137	52	58	<b>247</b>	+ 5
Maribyrnong IDC	40	23	44	<b>107</b>	- 3
Perth IDC	14	<5	14	<b>32</b>	+ 5
Villawood IDC	172	94	220	<b>486</b>	+ 56
Yongah Hill IDC	105	196	144	<b>445</b>	0
Mainland APODs	0	0	<5	<b>&lt;5</b>	- 26
<b>Total IDCs/APODs</b>	<b>468</b>	<b>369</b>	<b>484</b>	<b>1,321</b>	<b>37</b>
Perth IRH	<5	<5	<5	<b>5</b>	+ 2
Adelaide ITA	<5	5	14	<b>20</b>	+ 2
Brisbane ITA	33	38	17	<b>88</b>	0
Melbourne ITA	<5	86	81	<b>168</b>	- 27
<b>Total in IRH and ITA</b>	<b>36</b>	<b>132</b>	<b>113</b>	<b>281</b>	<b>- 23</b>
<b>Total Facility</b>	<b>504</b>	<b>501</b>	<b>597</b>	<b>1,602</b>	<b>+ 14</b>

# People In Immigration Detention

## Nationality

At 31 August 2016, there were 1602 people in held immigration detention facilities. Of these 1602 people, 12.3 per cent were from New Zealand, 11.0 per cent were from Iran, 7.6 per cent were from Vietnam, 6.6 per cent were from Malaysia and 5.4 per cent were from Sri Lanka.

**Table 5 – People in Held Immigration Detention Facilities at 31 August 2016**

Nationalities	Adult Male	Adult Female	Child Male (<18 years)	Child Female (<18 years)	Total
New Zealand	184	13	0	0	<b>197</b>
Iran	155	20	<5	0	<b>176</b>
Vietnam	105	16	0	0	<b>121</b>
Malaysia	86	19	<5	0	<b>106</b>
Sri Lanka	87	0	0	0	<b>87</b>
India	76	<5	0	0	<b>79</b>
China	59	11	0	0	<b>70</b>
Afghanistan	67	0	0	0	<b>67</b>
United Kingdom	52	6	0	0	<b>58</b>
Other	604	36	<5	0	<b>641</b>
<b>Total</b>	<b>1,475</b>	<b>124</b>	<b>&lt;5</b>	<b>0</b>	<b>1,602</b>

At 31 August 2016, 619 were people living in the community after being approved for a residence determination. Of these 619 people, 42.2 per cent were from Iran, 15.3 per cent were from Sri Lanka, 9.5 per cent were Stateless and 7.4 per cent were from Vietnam.

**Table 6 – People in the community under Residence Determination at 31 August 2016**

Nationalities	Adult Male	Adult Female	Child Male (<18 years)	Child Female (<18 years)	Total
Iran	85	73	57	46	<b>261</b>
Sri Lanka	27	20	31	17	<b>95</b>
Stateless	18	13	14	14	<b>59</b>
Vietnam	12	10	12	12	<b>46</b>
Iraq	12	9	11	10	<b>42</b>
Other	28	26	43	19	<b>116</b>
<b>Total</b>	<b>182</b>	<b>151</b>	<b>168</b>	<b>118</b>	<b>619</b>



# Children In Immigration Detention

At 31 August 2016, there were less than five children (aged less than 18 years) in Immigration Residential Housing, Immigration Transit Accommodation and Alternative Places of Detention.

**Figure 3 – Children in Immigration Residential Housing, Immigration Transit Accommodation and Alternative Places of Detention**

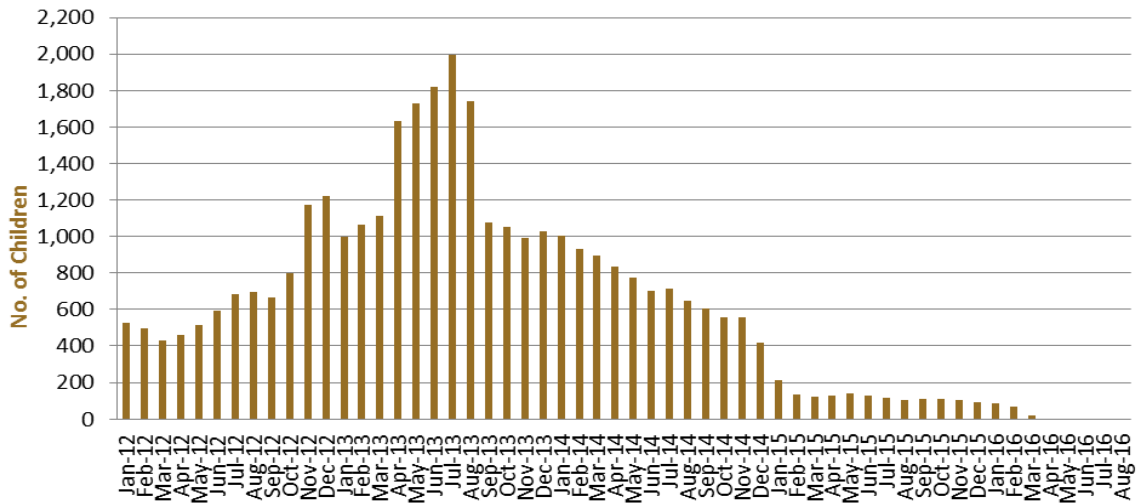


Figure 3 above, shows the number of children in immigration detention facilities and alternative places of detention from January 2012 to the date of this report. The continuous increase in the number of children in detention facilities from April 2013 to August 2013 was due to a rapid increase in irregular maritime arrivals during this period. The number of children in immigration detention facilities reduced in September 2013, as children completed mandatory processing and were transferred into the community. The number of children in detention facilities continued to decline during the late 2013 and 2014, with further reduction in January 2015.

At 31 August 2016, the number of children living in the community after being approved for a residence determination decreased to 286 from 295 in the previous report.

**Figure 4 – Children in the community under Residence Determination**

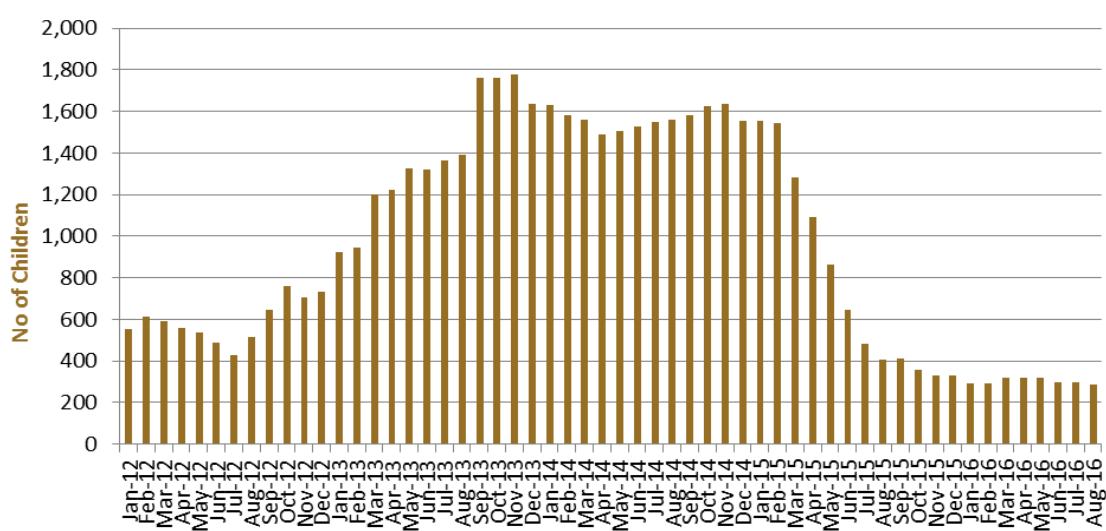


Figure 4 above, shows the number of children in community detention under residence determination from January 2012 to the date of this report. The number of children, in community detention under residence determination, has levelled off at its lowest number since the peak in November 2013, as a result of releases into the community on Bridging E visas.

**Table 7 – Children in Immigration Detention and in the Community at 31 August 2016 <sup>1</sup>**

Placement Type	Children
Immigration Residential Housing	0
Immigration Transit Accommodation	<5
Alternative Places of Detention	<5
<b>Total Facility</b>	<b>&lt;5</b>
<b>Total in the Community under a Residence Determination</b>	<b>286</b>
<b>Total in the Community on a Bridging E visa (including in re-grant process)</b>	<b>4,037</b>

(1) <sup>1</sup> At 31 August 2016, there were less than five children in held immigration detention facilities. The table above reflects figures based on records in Department of Immigration and Border Protection systems.

# Time In Immigration Detention Facilities

At 31 August 2016, there were 1602 people in immigration detention facilities. Of these 1602 people, 30.3 per cent had been detained for 91 days or less and 56.6 per cent had been detained for 365 days or less.

**Table 8 – Length of time in held immigration detention facilities at 31 August 2016**

Period Detained	Total	% of Total
7 days or less	74	4.6%
8 days - 31 days	212	13.2%
32 days - 91 days	200	12.5%
92 days - 182 days	182	11.4%
183 days - 365 days	238	14.9%
366 days - 547 days	207	12.9%
548 days - 730 days	105	6.6%
Greater than 730 days	384	24.0%
<b>Total</b>	<b>1,602</b>	<b>100%</b>

At 31 August 2016, the average period of time for people held in detention facilities was 454 days.

**Figure 5 – Average number of days in held immigration detention facilities only**

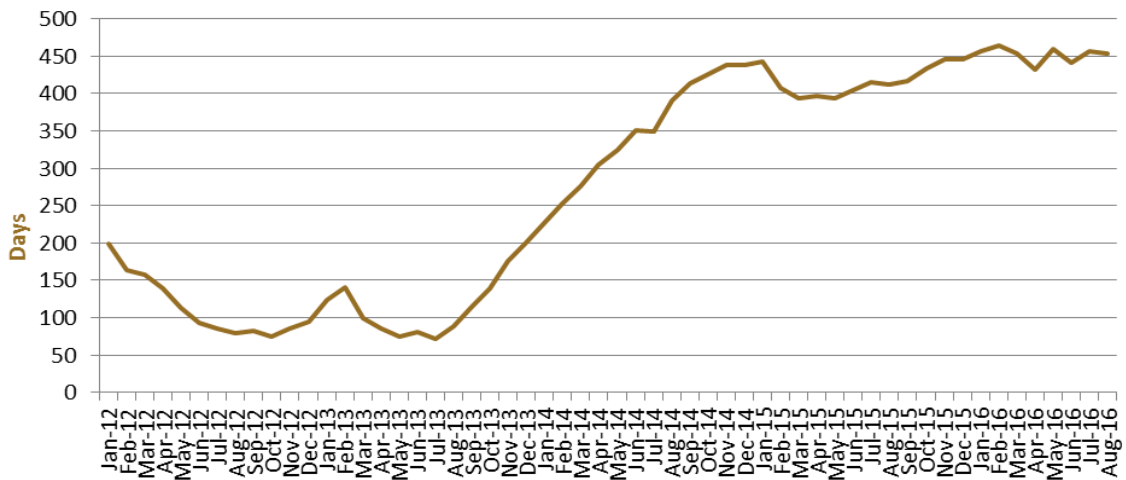


Figure 5 above, shows the average days in held immigration detention only by month from January 2012 to the date of this report. The average period of time for people held in detention facilities steadily increased from July 2013 to January 2015. Between January 2015 and March 2015, the average period of time for people in held detention facilities decreased.

## Time In Community Detention

Of the 619 people in Community Detention, as at 31 August 2016, 2.1 per cent had been in Community Detention for 91 days or less and 46.2 per cent had been in Community Detention for 365 days or less.

**Table 9 – People in Community Detention by Length of Time in Community Detention at 31 August 2016**

Period Detained	Total	% of Total
7 days or less	0	0.0%
8 days - 31 days	<5	0.6%
32 days - 91 days	9	1.5%
92 days - 182 days	145	23.4%
183 days - 365 days	128	20.7%
366 days - 547 days	48	7.8%
548 days - 730 days	44	7.1%
Greater than 730 days	241	38.9%
<b>Total</b>	<b>619</b>	<b>100%</b>