



Australian Government
Department of Immigration
and Border Protection



Australian
BORDER FORCE

Immigration Detention and Community Statistics Summary

30 April 2016

Table of Contents

Immigration Detention and Community Statistics Summary.....	1
About this report.....	3
Enquiries	3
Acronyms	3
Immigration Detention And Community Statistics Summary	4
Community Population By State/Territory	5
Immigration Detention Population	6
From 1990 to 30 April 2016	6
People In Immigration Detention Facilities.....	7
Arrival Type.....	7
People in Immigration Detention	8
Nationality	8
Children In Immigration Detention.....	9
Time In Immigration Detention Facilities	11
Time In Community Detention.....	12

About this report

This report provides an overview of the number of people in immigration detention and Regional Processing Centres as at midnight on the date of the report. The report is produced on a monthly basis.

Data is sourced from several departmental processing and recording systems. Data relating to the immigration detention population is dynamic and there can be delays in transmission of information from the department's immigration detention network operations. Variations in figures between this report and previous issues can occur. Due to these issues, data from the current financial year should always be considered provisional.

Further information about immigration detention is available at:

<http://www.border.gov.au/Busi/Comp/Immigration-detention>

Enquiries

Comments or enquiries concerning this report should be sent using the department's client service feedback form quoting the name and date of the report.

See: <http://www.border.gov.au/about/contact/make-enquiry/enquiries-and-feedback>

Acronyms

Table 1 – Acronyms used in this document

Acronym	Description
APOD	Alternative Place of Detention
IMA	Illegal Maritime Arrival
IDC/F	Immigration Detention Centre/Facility
IRH	Immigration Residential Housing
ITA	Immigration Transit Accommodation
RPC	Regional Processing Centre

Immigration Detention And Community Statistics Summary

At 30 April 2016, there were 1,695 people in immigration detention facilities, including 1,509 in immigration detention on the mainland and 186 in immigration detention on Christmas Island.

A further 645 people were living in the community after being approved for a residence determination and 28,503 were living in the community after grant of a Bridging Visa E.

At 30 April 2016, there were less than five children in held immigration detention facilities. The table below reflects figures based on records in Department of Immigration and Border Protection systems.¹

Table 2 – People in Immigration Detention Facilities (IDFs), Alternative Places of Detention (APODs), Regional Processing Centres (RPCs) and the Community at 30 April 2016

Place of immigration detention	Men	Women	Children	Total	Change from Previous Summary 31/03/16
Christmas Island IDC	186	0	0	186	+ 3
Maribyrnong IDC	92	11	0	103	- 21
Perth IDC	19	8	0	27	- 3
Villawood IDC	418	42	0	460	+ 24
Yongah Hill IDC	364	0	0	364	+ 7
Christmas Island APODs	0	0	0	0	0
Wickham Point APOD	333	38	0	371	+ 10
Total IDCs/APODs	1,412	99	0	1,511	+ 20
Perth IRH	<5	<5	0	7	- 6
Sydney IRH	0	0	0	0	- 11
Adelaide ITA	22	<5	0	24	+ 2
Brisbane ITA	54	13	0	67	+ 2
Melbourne ITA	63	21	<5	86	+ 9
Total in IRH and ITA	143	39	<5	184	- 4
Total Facility	1,555	138	<5	1,695	+ 16
Total in Community under Residence Determination	176	152	317	645	- 10
Total in Community on Bridging Visa E (Including people in a re-grant process)	21,052	3,384	4,067	28,503	- 118
Republic of Nauru (RPC)	363	56	50	469	+ 1
Manus Province, Papua New Guinea (RPC)	898	0	0	898	- 7
Total RPCs	1,261	56	50	1,367	- 6

(1) ¹ While out of scope of this data, no IMA children were held in detention at 30 April 2016.

(2) At 8 am 5 May 2016, there were no children in detention.

Community Population By State/Territory

Of the 645 people approved for a residence determination to live in the community, 35.5 per cent were in Victoria, 25.1 per cent in New South Wales, 22.3 per cent in Queensland, 8.2 per cent in South Australia, 8.2 per cent in Western Australia, 0.5 per cent in Tasmania and 0.2 per cent in the Australian Capital Territory.

Table 3 – Community Detention Population by State/Territory at 30 April 2016

State/Territory	Adult Male	Adult Female	Child Male (<18 years)	Child Female (<18 years)	Total
Victoria	67	52	67	43	229
New South Wales	40	39	48	35	162
Queensland	37	36	38	33	144
South Australia	11	11	14	17	53
Western Australia	20	13	16	<5	53
Tasmania	<5	<5	<5	0	<5
Australian Capital Territory	0	0	<5	0	<5
Total	176	152	185	132	645

Immigration Detention Population

From 1990 to 30 April 2016

The number of people in immigration detention continues to reduce as a result of releases into the community.

Figure 1 – Population in Immigration Detention

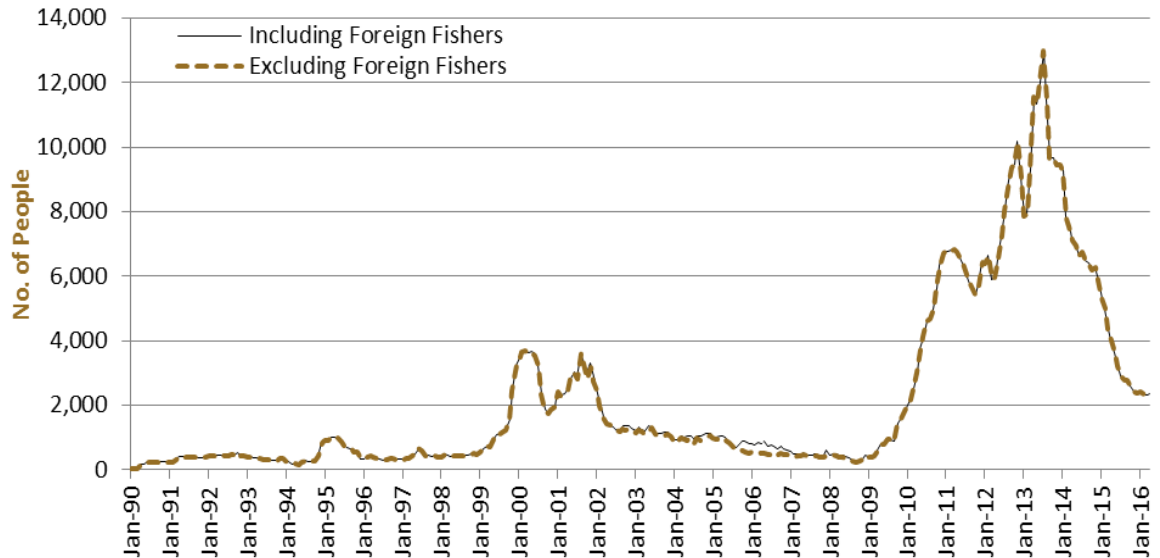


Figure 1 above, shows the number of people in immigration detention from 1990 to the date of this report. The trend had a consistent rise of people in immigration detention from January 2009 to January 2013, but has since decreased and continues to decline steadily.

People In Immigration Detention Facilities

Arrival Type

There were 670 people, who arrived unlawfully by air or boat, in held immigration detention facilities at 30 April 2016, representing approximately 40.0 per cent of the total immigration detention population.

There were also 1,025 people (about 60.0 per cent of the total immigration population) who arrived in Australia lawfully and were subsequently taken into immigration detention and had visa cancellations for either over staying or breaching their visa conditions.

Figure 2 – People in Held Immigration Detention Facilities by Arrival Type

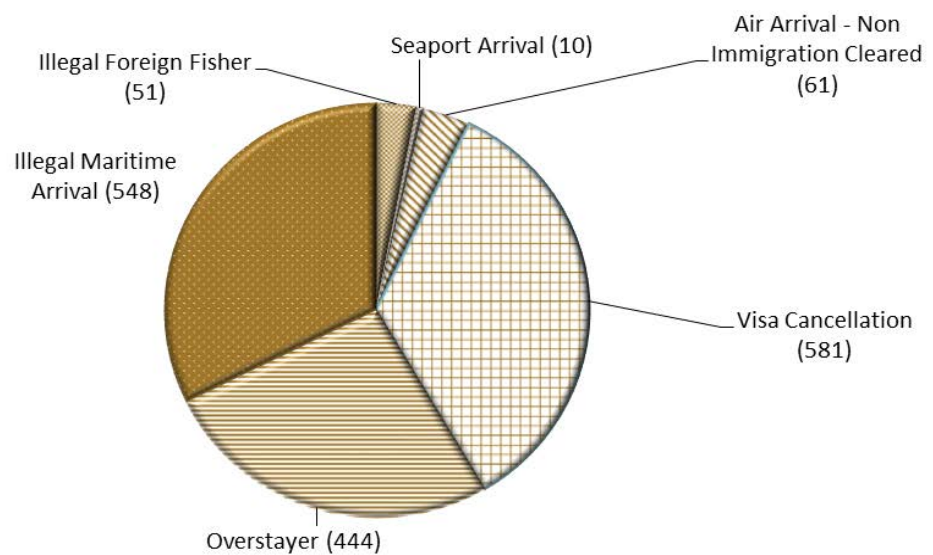


Figure 2 above, shows the number of people in held immigration detention facilities by arrival type, including Visa Overstayers, Visa Cancellations, Foreign Fishers, Irregular Maritime Arrivals, Unauthorised Air Arrivals, and if required – Inadequately Documented Crew Members and Others such as stowaways and ship deserters.

People in Immigration Detention

Nationality

At 30 April 2016, there were 1,695 people in held immigration detention facilities. Of these 1,695 people, around 11.5 per cent were from Iran, 11.3 per cent were from New Zealand, 8.8 per cent were from Vietnam, 6.9 per cent were from China and 6 per cent were from Sri Lanka.

Table 4 – People in Held Immigration Detention Facilities at 30 April 2016

Nationalities	Adult Male	Adult Female	Child Male (<18 years)	Child Female (<18 years)	Total
Iran	171	24	0	0	195
New Zealand	182	9	0	0	191
Vietnam	134	15	0	0	149
China	92	25	0	0	117
Sri Lanka	101	<5	0	0	102
Afghanistan	71	0	0	0	71
United Kingdom	57	7	0	0	64
Malaysia	52	9	0	0	61
India	55	<5	0	0	59
Other	640	44	<5	<5	686
Total	1,555	138	<5	<5	1,695

At 30 April 2016, 645 were people living in the community after being approved for a residence determination. Of these 645 people, around 40 per cent were from Iran, 16.3 per cent were from Sri Lanka, 9.9 per cent were Stateless and 8.2 per cent were from Vietnam.

Table 5 – People in the community under Residence Determination at 30 April 2016

Nationalities	Adult Male	Adult Female	Child Male (<18 years)	Child Female (<18 years)	Total
Iran	82	74	57	45	258
Sri Lanka	24	21	37	23	105
Stateless	18	12	18	16	64
Vietnam	14	9	13	17	53
Iraq	12	10	13	11	46
Other	26	26	47	20	119
Total	176	152	185	132	645

Children In Immigration Detention

At 30 April 2016, there were less than five children (aged less than 18 years) in Immigration Residential Housing, Immigration Transit Accommodation and Alternative Places of Detention.

While out of scope of this data, the number of IMA children in held-detention was reduced to zero on 1 April 2016.

Figure 3 – Children in Immigration Residential Housing, Immigration Transit Accommodation and Alternative Places of Detention ¹

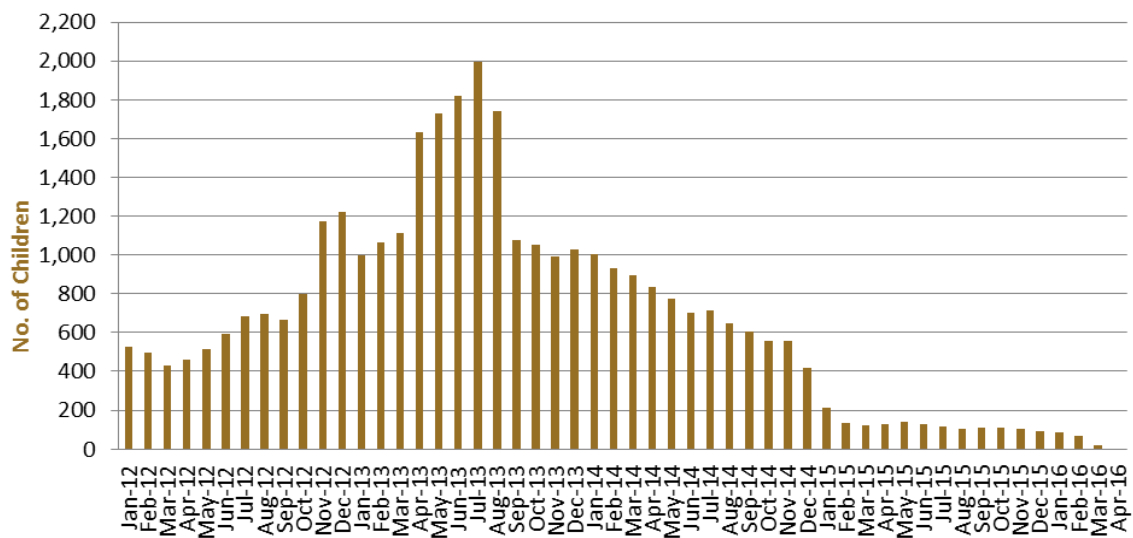


Figure 3 above, shows the number of children in immigration detention facilities and alternative places of detention from January 2012 to the date of this report. The continuous increase in the number of children in detention facilities from April 2013 to Aug 2013 was due to a rapid increase in irregular maritime arrivals during this period. The number of children in immigration detention facilities reduced in September 2013, as children completed mandatory processing and were transferred into the community. The number of children in detention facilities continued to decline during the late 2013 and 2014, with further reduction in January 2015. The number of children in detention continued to reduce.

¹ At 8 am 5 May 2016, there were no children in detention.

The number of children living in the community after being approved for a residence determination increased at 30 April 2016, to 317 children.

Figure 4 – Children in the community under Residence Determination

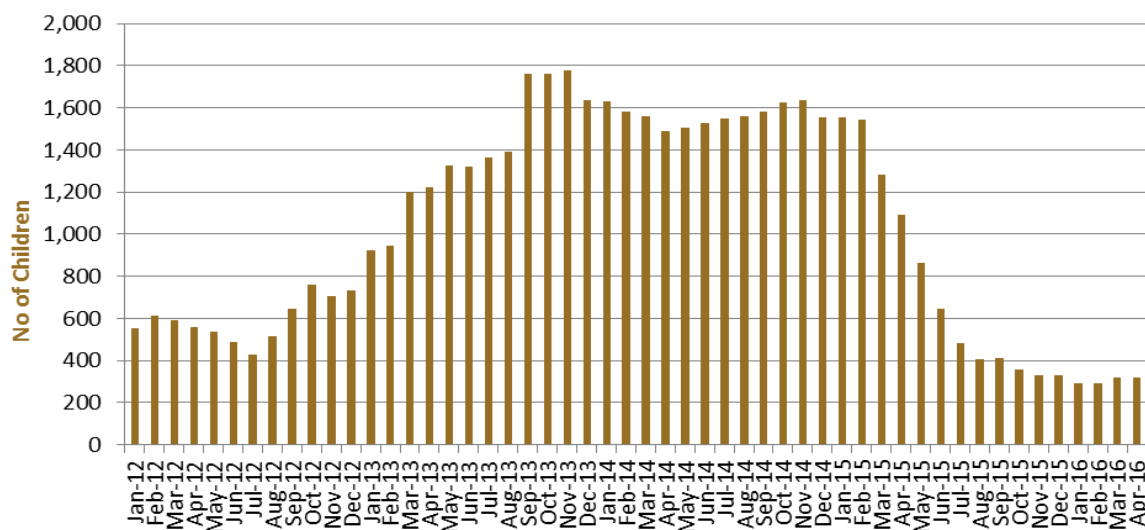


Figure 4 above, shows the number of children in community detention under residence determination from January 2012 to the date of this report. The number of children, in community detention under residence determination, has levelled off at its lowest number since the peak in November 2013, as a result of releases into the community on Bridging E visas.

Table 6 – Children in Immigration Detention and in the Community at 30 April 2016 ¹

Placement Type	Children
Immigration Residential Housing	0
Immigration Transit Accommodation	<5
Alternative Places of Detention	0
Total Facility	<5
Total in the Community under a Residence Determination	317
Total in the Community on a Bridging E visa (including in re-grant process)	4,067

(1) ¹ At 30 April 2016, there were less than five children in held immigration detention facilities. The table above reflects figures based on records in Department of Immigration and Border Protection systems. While out of scope of this data, no IMA children were held in detention at 30 April 2016.

(2) At 8 am 5 May 2016, there were no children in detention.

Time In Immigration Detention Facilities

At 30 April 2016, there were 1,695 people in immigration detention facilities. Of these 1,695 people, around 30.9 per cent had been detained for 91 days or less and 58.8 per cent had been detained for 365 days or less.

Table 7 – Length of time in held immigration detention facilities at 30 April 2016

Period Detained	Total	% of Total
7 days or less	95	5.6%
8 days - 31 days	218	12.9%
32 days - 91 days	210	12.4%
92 days - 182 days	173	10.2%
183 days - 365 days	301	17.7%
366 days - 547 days	186	11.0%
548 days - 730 days	105	6.2%
Greater than 730 days	407	24.0%
Total	1,695	100%

The average period of time for people held in detention facilities was 432 days at 30 April 2016.

Figure 5 – Average number of days in held immigration detention facilities only

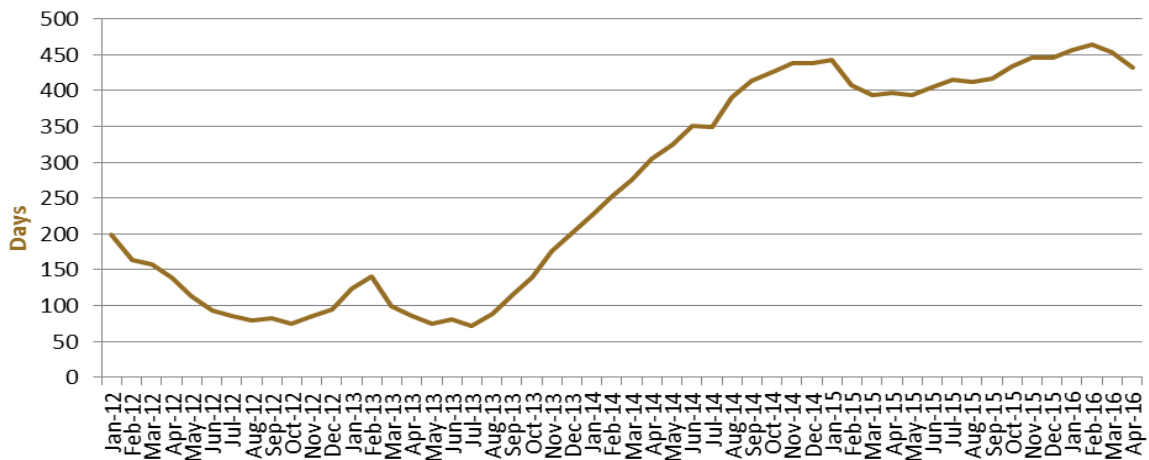


Figure 5 above, shows the average days in held immigration detention only by month from January 2012 to the date of this report. The average period of time for people held in detention facilities steadily increased from July 2013 to January 2015. Between January 2015 and March 2015, the average period of time for people in held detention facilities decreased. Since May 2015, the average days in held immigration detention has increased steadily, exceeding the peak of January 2015. The average number of days in held detention started to decline from March 2016.

Time In Community Detention

Of the 645 people in Community Detention, as at 30 April 2016, 27.9 per cent had been in Community Detention for 91 days or less and 44.7 per cent had been in Community Detention for 365 days or less.

Table 8 – People in Community Detention by Length of Time in Community Detention at 30 April 2016

Period Detained	Total	% of Total
7 days or less	0	0.0%
8 days - 31 days	38	5.9%
32 days - 91 days	142	22.0%
92 days - 182 days	57	8.8%
183 days - 365 days	51	7.9%
366 days - 547 days	52	8.1%
548 days - 730 days	45	7.0%
Greater than 730 days	260	40.3%
Total	645	100%